

CHARGING

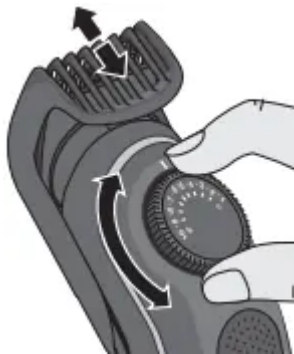
Recommended ambient temperature for *charging* is 41 °F to 95 ° F / 5 °C to 35 °C. The battery may not charge properly or at all under extreme low or high temperatures. Recommended ambient temperature for *trimming* is 60 °F to 95 °F / 15 °C to 35 °C. Do NOT expose the appliance to temperatures higher than 122 °F / 50 °C for extended periods of time.

- Connect the appliance via the special cord set to an electrical outlet.
- A full charge takes approx. 8 hours and provides up to 60 minutes of cordless operation time.
- The charging indicator shows that the appliance is being charged. When the battery is fully charged, the charging indicator turns off.
- Once the appliance is completely charged, discharge it through normal use. Then recharge again to full capacity

USAGE

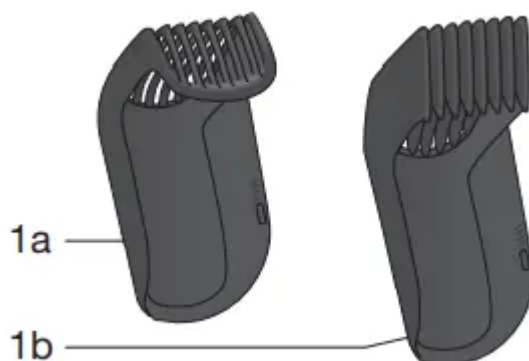
Beard Trimming / Hair Clipping

- Turn the length selector to your desired cutting length. The comb slides automatically up

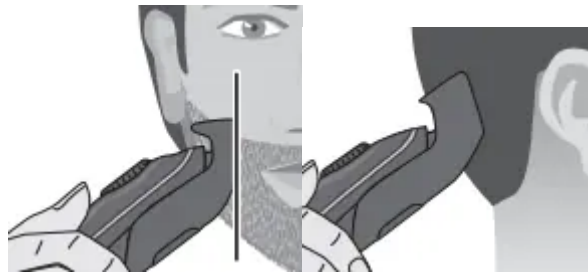


or down.

- Length settings precision beard comb (1a): 1 to 10 mm in 0,5 mm steps
- Length settings precision hair comb (1b): 11 to 20 mm in 0,5 mm steps



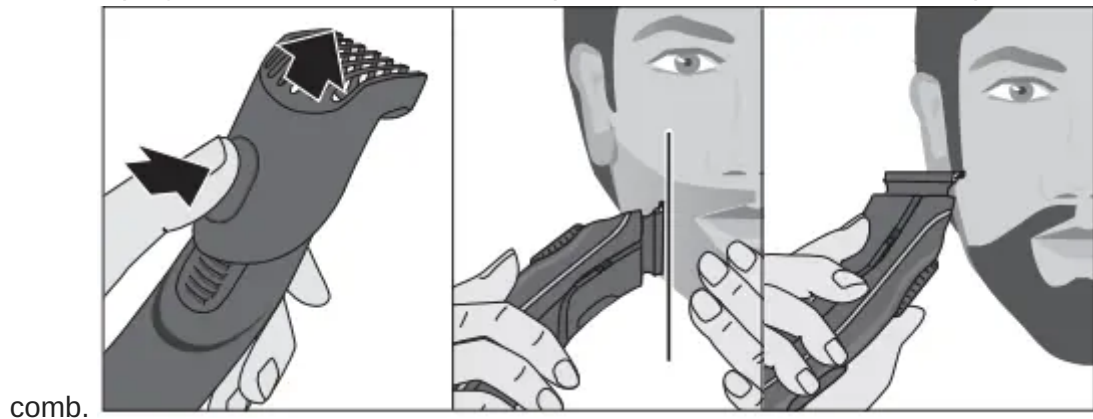
- Push the on/off button to turn the appliance on.
- Trim against hair growth by guiding the flat comb part over the skin



- Avoid clogging the comb with hair. Remove and clean it from time to time.

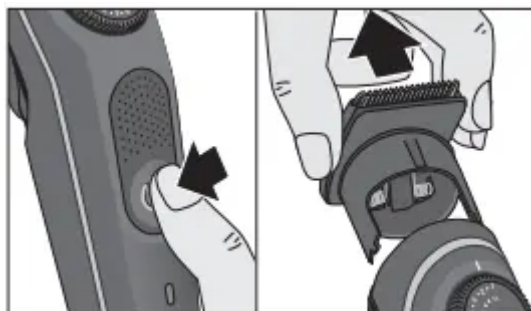
Precision and Contour Trimming

- For shaping sideburns, moustaches and partial short beards, take off the precision

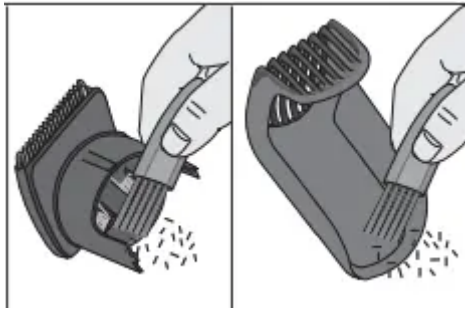


CLEANING AND MAINTENANCE

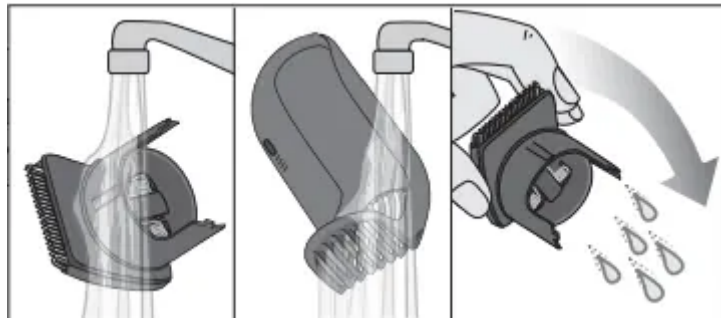
- Switch off the appliance.
- Take off the head and combs.



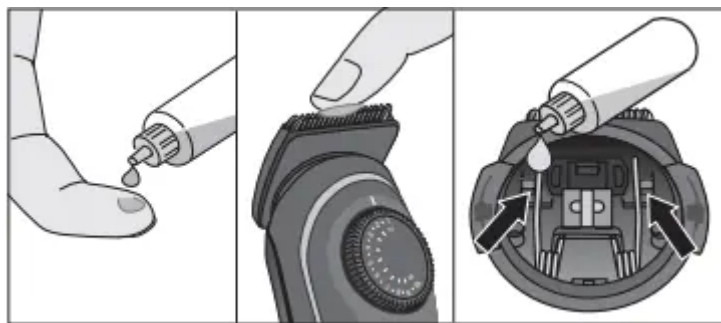
- Use the brush to clean the head, combs and the appliance.



- Handle, head and combs can be cleaned under running water. Rinse until all residues have been removed. Let them dry completely before reattaching them.



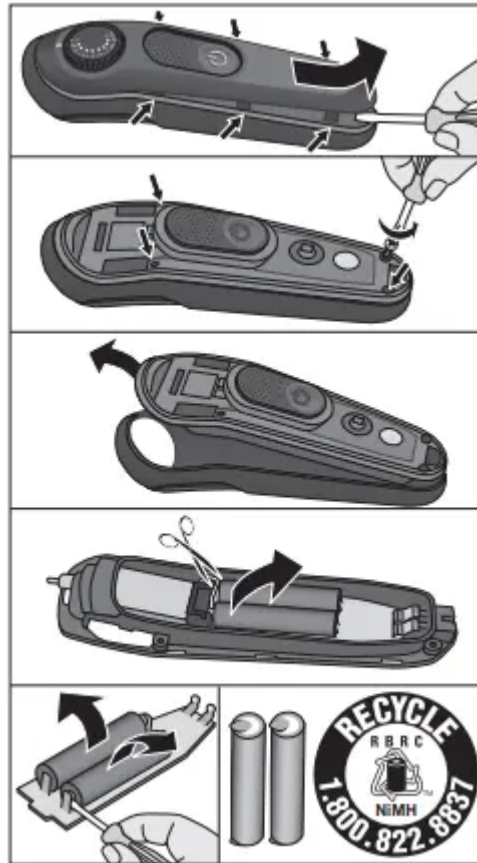
- To keep the trimmer working properly, oil it with light machine oil (not included) regularly.



BATTERY REMOVAL

This appliance contains rechargeable batteries. Before disposing of the appliance, disassemble the housing as shown, remove the rechargeable batteries and recycle or dispose of properly,

according to local guidelines. Caution: Disassembling the appliance will destroy it and invalidate



the warranty.

Warning

This content is compiled from multiple sources and is provided for reference purposes only. It may not be complete or fully applicable to all situations. If you are unable to resolve your issue, please contact the product manufacturer or an authorized service provider for official support.