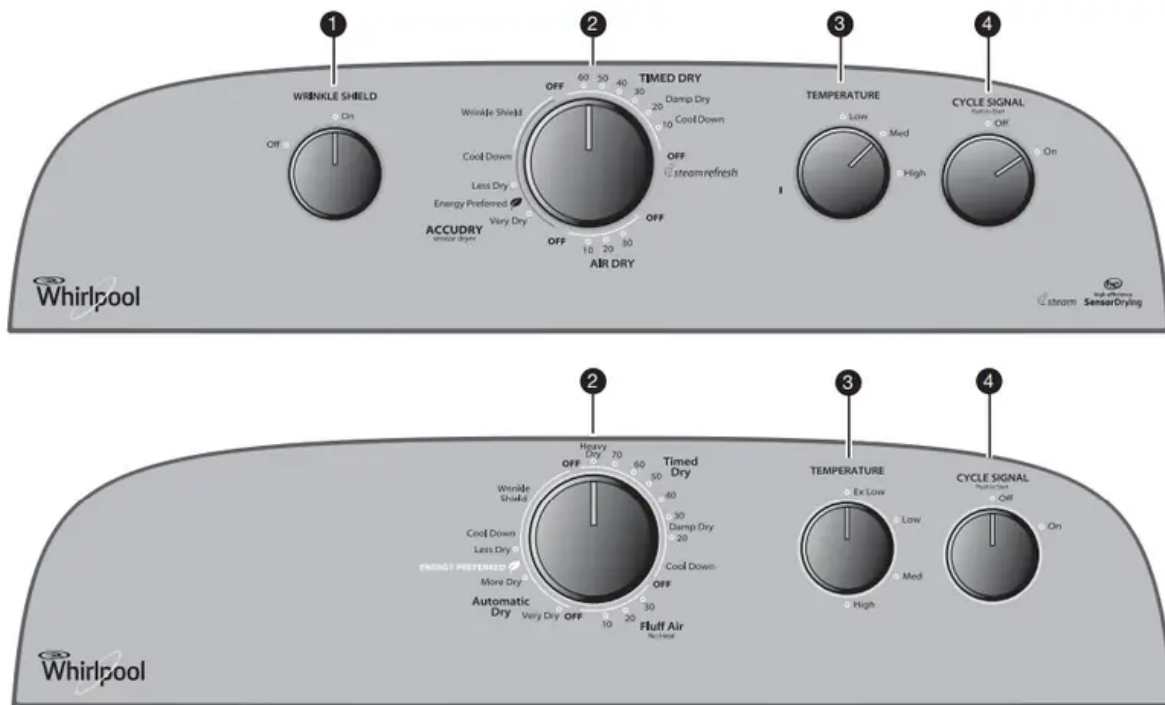


Control Panel & Features



Not all features and options are available on all models.
Appearance may vary.

1. WRINKLE SHIELD™ Feature (on some models)

When you are unable to remove a load of clothes from the dryer as soon as it stops, wrinkles can form. The WRINKLE SHIELD™ feature periodically tumbles, rearranges, and fluffs the load to help keep wrinkles from forming.

- Get 90 minutes of heat-free, periodic tumbling at the end of a cycle. Turn the WRINKLE SHIELD™ knob to on or off at any time before the cycle has ended.

2. CYCLE KNOB

Use your Cycle Knob to select available cycles on your dryer. Turn the knob to select a cycle for your laundry load. See “Cycle Guide” for detailed descriptions of cycles.

TIMED DRY

Will run the dryer for the specified time on the control. On models with a selectable temperature knob, you may choose a setting based on the fabrics in your load. Drying time and temperature will depend on your dryer model.

FLUFF AIR

No heat drying.

ACCUDRY™/AUTOMATIC DRY

Senses moisture in the load or air temperature and shuts off when the load reaches the selected dryness level. Gives the best drying in the shortest time. Drying time will vary based on fabric type, load size, and dryness setting.

Steam Refresh (steam models only)

This cycle is best for reducing wrinkles and odors from dry items. Cycle time will increase depending on number of items.

3. TEMPERATURE

Select a drying temperature based on the fabrics in your load. If you are unsure of the temperature to select for a load, select the lower setting rather than the higher setting.

NOTE: The No Heat temperature setting (on some models) is not available on ACCUDRY™ cycles.

4. CYCLE SIGNAL/PUSH TO START

The Cycle Signal produces an audible sound when the drying cycle is finished. Promptly removing clothes at the end of the cycle reduces wrinkling

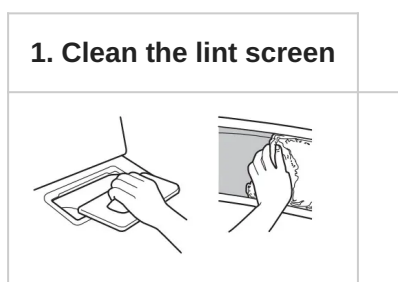
Turn the CYCLE SIGNAL knob to select the desired setting (On or Off). Press the PUSH to START knob to start the dryer.

NOTE: When the Wrinkle Shield™ setting is selected and the Cycle Signal is on, the tone will sound every 5 minutes until the clothes are removed, or the Wrinkle Shield™ setting ends.

Using Your Dryer


WARNING: To reduce the risk of fire, electric shock, or injury to persons, read the IMPORTANT SAFETY INSTRUCTIONS before operating this dryer.

Before using your dryer, wipe the dryer drum with a damp cloth to remove dust from storing and shipping.



Clean the lint screen before each load. Pull the lint screen out of its holder. Roll lint off the screen with your fingers. Do not rinse or wash screen to remove lint. Push the lint screen firmly back into place.

For additional cleaning information, see “Dryer Care”.

2. Load the dryer	
	

Place laundry in the dryer. Close the door.

Do not tightly pack the dryer; clothes should be able to tumble freely.

NOTE: Your model may have a different door than the one shown. Some models have drop down doors.

3. Select the desired cycle	
	

Select the desired cycle for your load. See the Cycle Guide for more information about each cycle.

ACCUDRY™/AUTOMATIC DRY Cycles

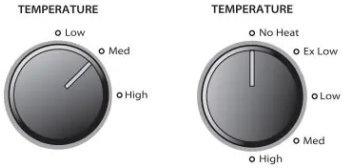
You can select a different dryness level, depending on your load, by turning the knob to dryness level.

Selecting More or Very Dry, ENERGY PREFERRED, or Less Dry automatically adjusts the dryness level at which the dryer will shut off. Once a dry level is set, it cannot be changed without stopping the cycle.

ACCUDRY™/AUTOMATIC DRY cycles give the best drying in the shortest time. Drying time varies based on fabric type, load size, and dryness setting.

Steam Refresh

Reduces odors and wrinkles from small to medium-sized loads of dry items. Dry time will automatically adjust when the load size is sensed. Medium or High Temp Levels may be selected.

4. Set cycle settings, if desired	
	



Turn the TEMPERATURE knob to change the drying temperature setting. See “Setting the Drying Temperature”.

NOTE: Not all settings are available with all cycles.



- Get 90 minutes of heat-free, periodic tumbling at the end of a cycle. Turn the WRINKLE SHIELD™ knob to select on or off at any time before the cycle has ended.
- The Wrinkle Shield cycle on some models is automatically set to run for up to 40 minutes of no-heat, periodic tumbling at the end of the cycle.

NOTE: Not all options and settings are available with all cycles.



Turn the CYCLE SIGNAL knob to select the desired setting (On or Off). The Cycle Signal produces an audible sound when the drying cycle is finished. Promptly removing clothes at the end of the cycle reduces wrinkling.

NOTE: When the Wrinkle Shield™ setting is selected and the Cycle Signal is on, the tone will sound every 5 minutes until the clothes are removed, or the Wrinkle Shield™ setting ends.



Push and hold the PUSH to START knob to begin the cycle.

Promptly remove items after cycle has completed to reduce wrinkling. Use the Wrinkle Shield™ feature to avoid wrinkling when you are unable to remove a load from the dryer as soon as it stops.

Dryer Care

Cleaning the dryer location

Keep dryer area clear and free from items that would block the air flow for proper dryer operation. This includes clearing piles of laundry in front of the dryer.

Cleaning the dryer interior

To clean dryer drum

1. Apply a liquid, nonflammable household cleaner to the stained area of the drum and rub with a soft cloth until stain is removed.
2. Wipe drum thoroughly with a damp cloth.
3. Tumble a load of clean cloths or towels to dry the drum.

NOTE: Items that contain loose dyes, such as denim blue jeans or brightly colored cotton items, may discolor the dryer interior. These stains are not harmful to your dryer and will not stain future loads of clothes. Dry these items inside out to avoid drum staining.

Removing accumulated lint

From Inside the Dryer Cabinet

Lint should be removed every 2 years, or more often, depending on dryer usage. Cleaning should be done by a qualified servicer.

From the Exhaust Vent

Lint should be removed every 2 years, or more often, depending on dryer usage.

Non-Use, Storage, and Moving Care

Non-Use or Storage Care

Operate your dryer only when you are at home. If you will be on vacation or not using your dryer for an extended period of time, you should:

1. Unplug dryer or disconnect power.
2. (For gas dryers only): Close shut off valve to gas supply line.
3. Clean lint screen. See "Cleaning the Lint Screen."

4. Turn off the water supply to the dryer. This helps to avoid unintended flooding (due to a water pressure surge) while you are away.

Moving Care

For power supply cord-connected dryers:

1. Unplug the power supply cord.
2. Gas models only: Close shutoff valve in gas supply line.
3. Gas models only: Disconnect gas supply line pipe and remove fittings attached to dryer pipe.
4. Gas models only: Cap the open gas supply line.
5. Steam models only: Shut off water faucet
6. Steam models only: Disconnect the water inlet hose from faucet, then drain the hose. Transport hose separately.
7. Make sure leveling legs are secure in dryer base.
8. Use tape to secure dryer door.

For direct-wired dryers:

1. Turn off power at fuse or breaker box.
2. Disconnect wiring.
3. Steam models only: Shut off water faucet.
4. Steam models only: Disconnect the water inlet hose from faucet, then drain the hose. Transport hose separately.
5. Make sure leveling legs are secure in dryer base. 6. Use tape to secure dryer door.

Troubleshooting



If you experience	Possible Causes	Solution
Clothes are not drying satisfactorily, drying times are too long	Lint screen clogged with lint.	Lint screen should be cleaned before each load.
	Has the Air Fluff cycle or No Heat temperature setting been selected.	Select the right cycle for the types of items being dried. See "Cycle Guide."
	Load too large and heavy to dry quickly.	Separate the load to tumble freely.
	Exhaust vent or outside exhaust hood clogged with lint, restricting air movement.	Run the dryer for 5-10 minutes. Hold your hand under the outside exhaust hood to check air movement. If you do not feel air movement, clean exhaust system of lint or replace exhaust vent with heavy metal or flexible metal vent. Make sure vent is not crushed or kinked. See Installation Instructions.
	Fabric softener sheets blocking the grille.	Use only one fabric softener sheet, and use it only once.
	Exhaust vent not the correct length.	Check that the exhaust vent is not too long or has too many turns. Long venting will increase drying times. Make sure vent is not crushed or kinked. See Installation Instructions.
	Exhaust vent diameter not the correct size.	Use 4" (102 mm) diameter vent material.
	Dryer located in a room with temperature below 45°F (7°C).	Proper operation of dryer cycles requires temperatures above 45°F (7°C).
	Dryer located in a closet without adequate opening.	Closet doors must have ventilation openings at the top and bottom of the door. The front of the dryer requires a minimum of 1" (25 mm) of airspace, and, for most installations, the rear of the dryer requires 5" (127 mm). See Installation Instructions.
Dryer will not run		Make sure the dryer door is closed completely.



If you experience	Possible Causes	Solution
	Door not closed completely.	
	PUSH to START knob not pressed firmly or held long enough.	Press and hold the PUSH to START knob until you hear the dryer drum moving.
	Household fuse is blown or circuit breaker has tripped.	Electric dryers use 2 household fuses or circuit breakers. The drum may be turning, but you may not have heat. Replace both fuses or reset the circuit breaker. If the problem continues, call an electrician
	Incorrect power supply.	Electric dryers require 240-volt power supply. Check with a qualified electrician.
	Wrong type of fuse.	Use a time-delay fuse.
Unusual sounds	Dryer had a period of non-use.	If the dryer hasn't been used for awhile, there may be a thumping sound during the first few minutes of operation.
	A coin, button, or paper clip is caught between the drum and front or rear of the dryer.	Check the front and rear edges of the drum for small objects. Clean out pockets before laundering.
	It is a gas dryer.	The gas valve clicking is a normal operating sound.
	The four legs are not installed, or the dryer is not level front to back and side to side.	The dryer may vibrate if not properly installed. See Installation Instructions.
	Clothing knotted or balled up.	When balled up, the load will bounce, causing the dryer to vibrate. Separate the load items and restart the dryer.
No heat	Household fuse is blown or circuit breaker has tripped.	The drum may be turning, but you may not have heat. Electric dryers use 2 household fuses or circuit breakers. Replace both fuses or reset the



If you experience	Possible Causes	Solution
		circuit breaker. If the problem continues, call an electrician.
	Supply line valve not open.	For gas dryers, make sure the supply line valve is open.
	Incorrect power supply.	Electric dryers require 240-volt power supply. Check with a qualified electrician.
Cycle time too short	ACCUDRY™ or Automatic Dry cycle ending early	<p>The load may not be contacting the sensor strips. Level the dryer.</p> <p>Use Timed Dry for very small loads. Change the Dry Level setting on ACCUDRY™/Automatic Dry cycles.</p> <p>Increasing or decreasing the Dry Level setting will change the amount of drying time in a cycle.</p>
Lint on load	Lint screen clogged.	Lint screen should be cleaned before each load.
Stains on load or drum	Dryer fabric softener not properly used.	<p>Add dryer fabric softener sheets at the beginning of the cycle. Fabric softener sheets added to a partially dried load can stain your items.</p> <p>Drum stains are caused by dyes in clothing (usually blue jeans). These will not transfer to other clothing</p>
Loads are wrinkled	Load not removed from dryer at the end of the cycle.	Select Wrinkle Shield™ feature to tumble the load without heat to avoid wrinkling.
	Dryer tightly packed.	Dry smaller loads that can tumble freely and reduce formation of wrinkles.
	For steam cycles, the water is not properly connected with the dryer.	Make sure water is connected to the dryer. Check that water inlet hose is connected to both the faucet and dryer's water inlet valve. Check that the water supply is turned on.
Odors	You have recently been painting, staining, or	

If you experience	Possible Causes	Solution
	varnishing in the area where your dryer is located.	If so, ventilate the area. When the odors or fumes are gone from the area, rewash and dry the clothing.
	For steam cycles, the water is not properly connected with the dryer.	Make sure water is connected to the dryer. Check that water inlet hose is connected to both the faucet and dryer's water inlet valve. Check that the water supply is turned on.
	The electric dryer is being used for the first time.	The new electric heating element may have an odor. The odor will be gone after the first cycle.
Load is too hot	Laundry items were removed from the dryer before the end of the cycle.	Allow Cool Down cycle to finish before removing laundry from dryer. All cycles are cooled slowly to reduce wrinkling and make it easier to handle. Items removed before Cool Down may feel very warm.
	A high temperature cycle was used or a separate temperature control was set to high.	Select a lower temperature, and use an automatic drying cycle. These cycles sense the temperature or the moisture level in the load and shut off when the load reaches the selected dryness. This reduces overdrying.

Warning

This content is compiled from multiple sources and is provided for reference purposes only. It may not be complete or fully applicable to all situations. If you are unable to resolve your issue, please contact the product manufacturer or an authorized service provider for official support.

