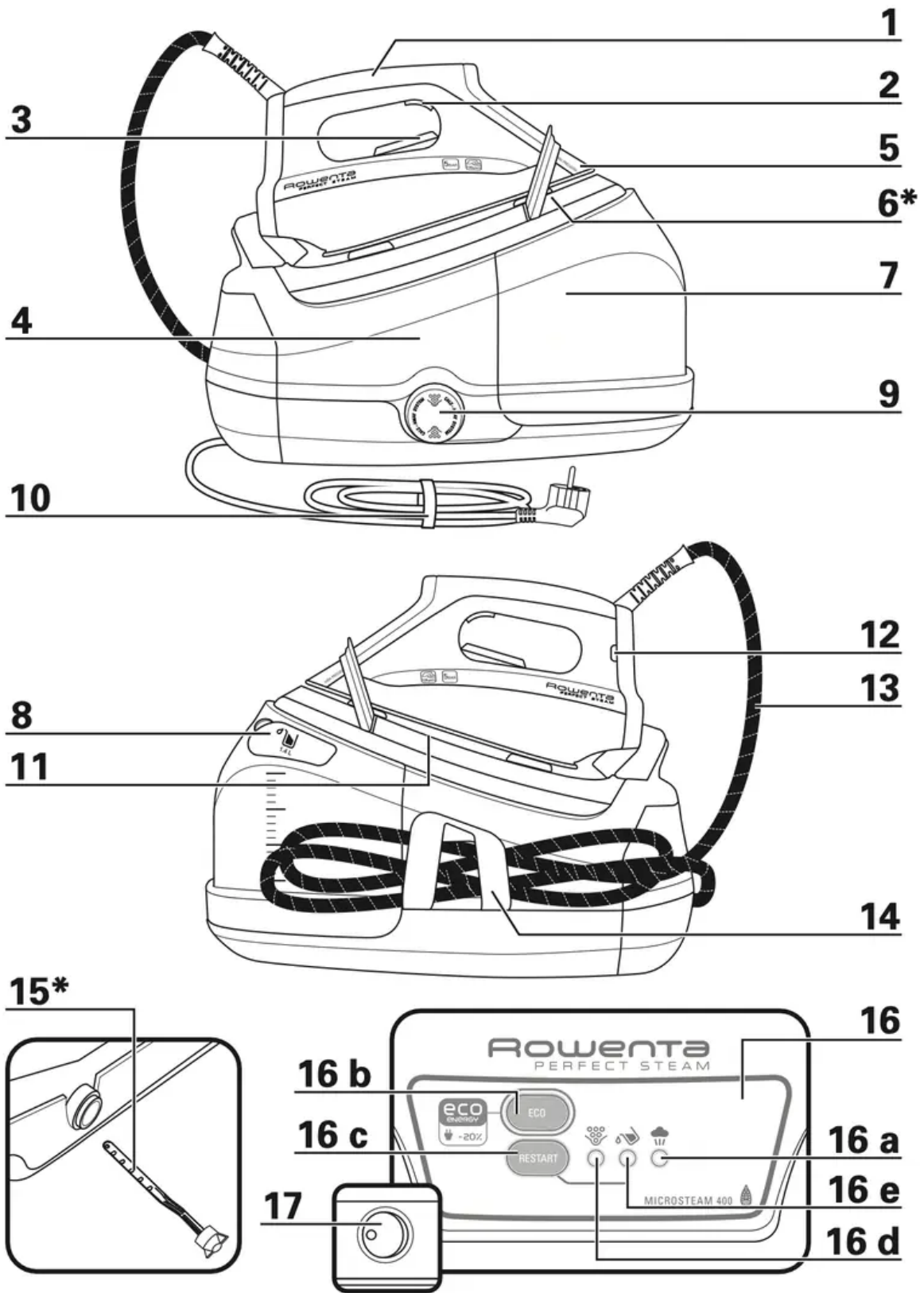


## DESCRIPTION



1. Iron handle

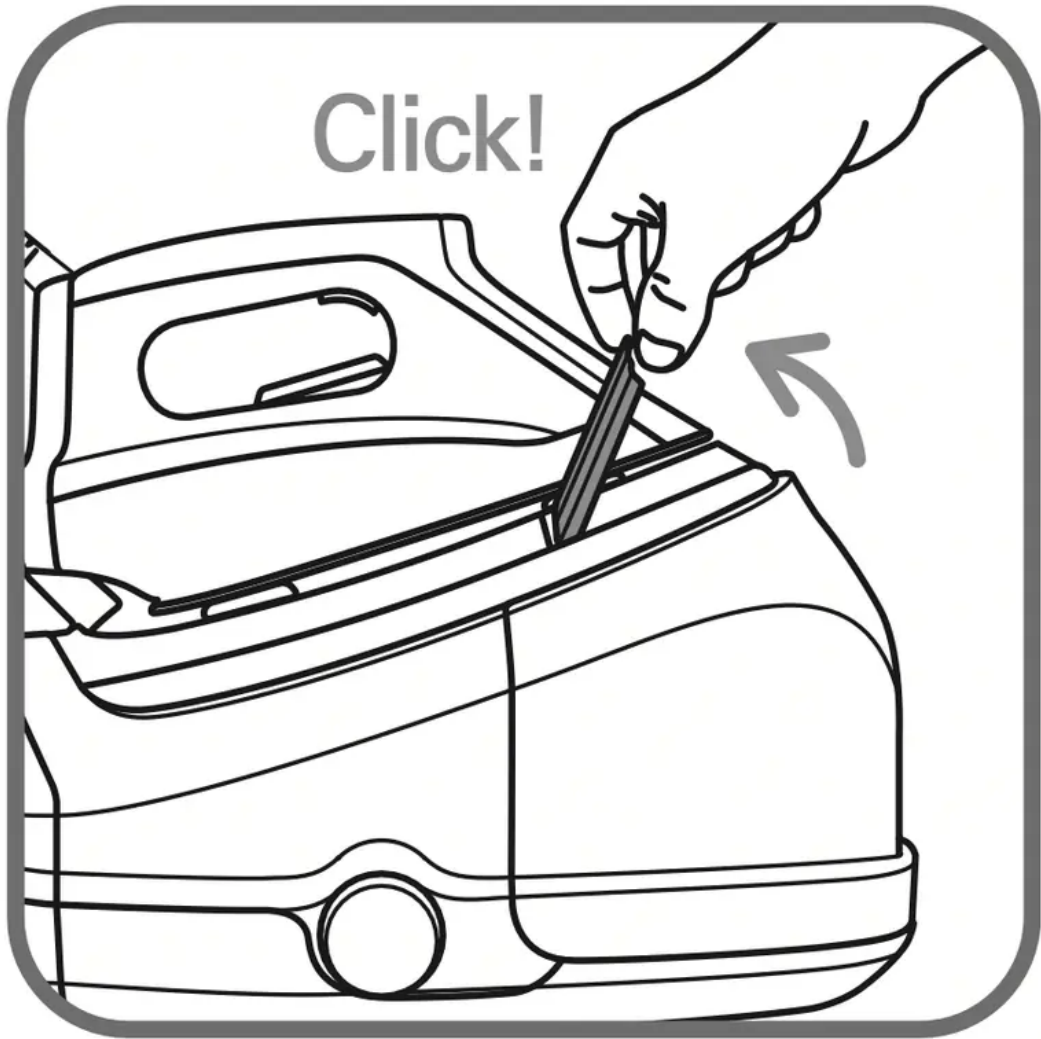
2. Steam trigger
3. Iron temperature control dial
4. Base unit
5. Precision tip
6. Safety lock (to hold the iron onto the base unit)\*
7. Removable 1.4L water tank
8. Tank filling shutter
9. "Calc away system" scale collector or "boiler rinse" cap cover \*
10. Electric cord storage (Velcro)
11. Iron rest
12. Iron temperature control light
13. Steam cord
14. Steam cord storage clip
15. "Calc Away System" scale collector\*
16. Control panel
  - a. Steam ready light
  - b. ECO button
  - c. Restart button
  - d. "Calc Away System" indicator or "boiler rinse" indicator \*
  - e. "Water tank empty" light
17. On/Off switch

## PREPARATION

### Safety lock (according to model)

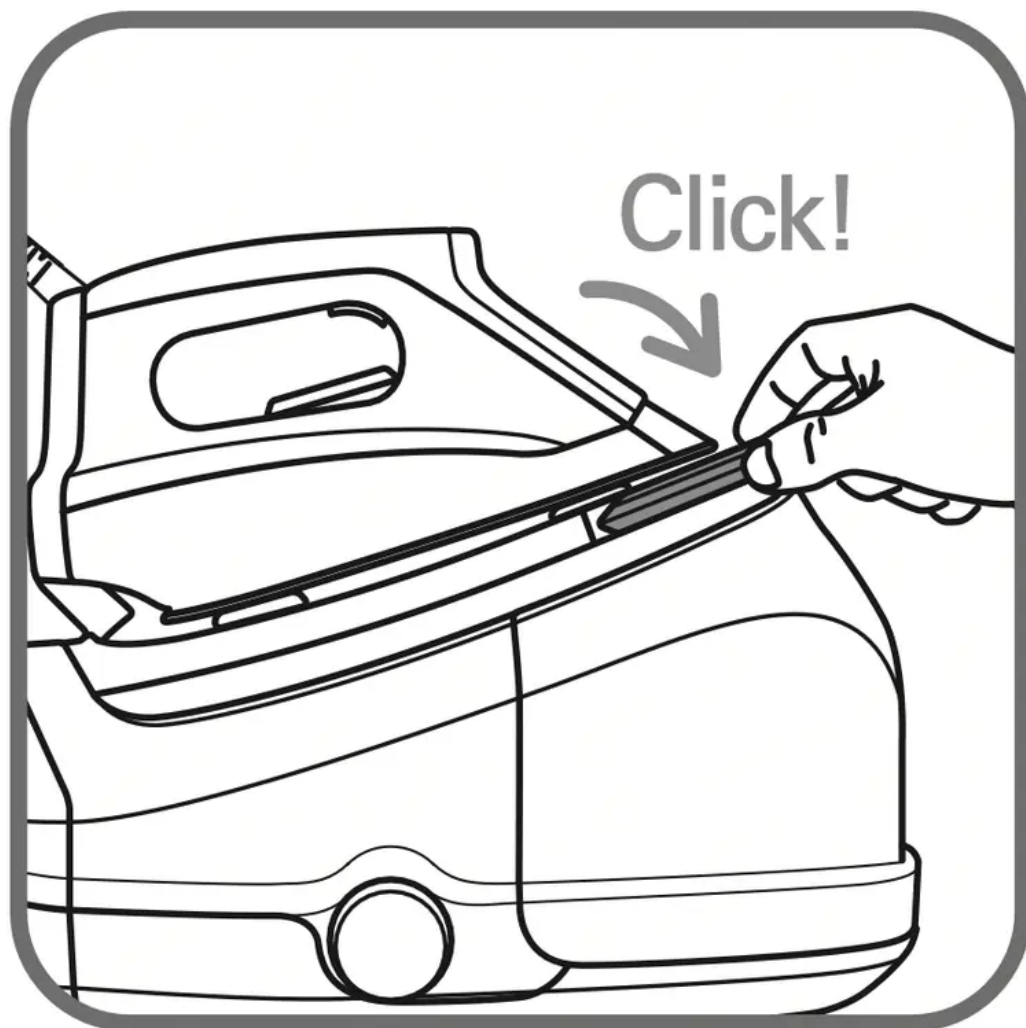
- Your steam generator is equipped with a safety lock that holds the iron on to the base unit in order to facilitate transport and storage:

- Pull up – fig. 1.



**fig.1**

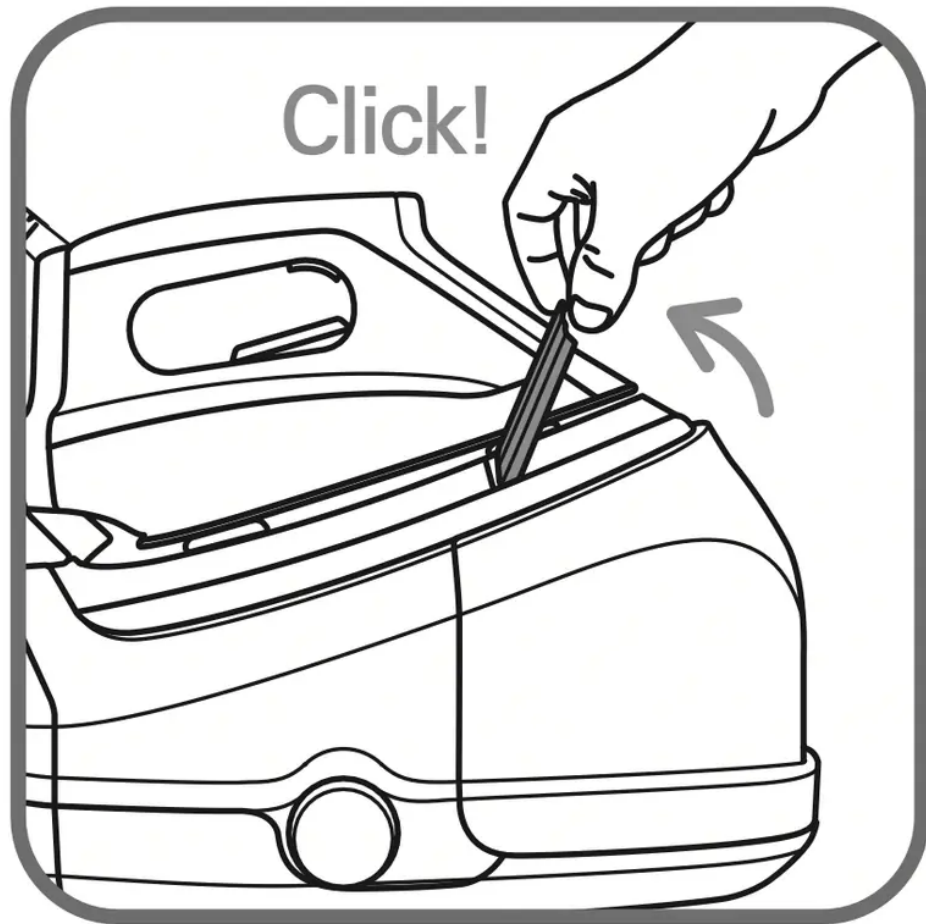
- Push down – fig. 2.



**fig.2**

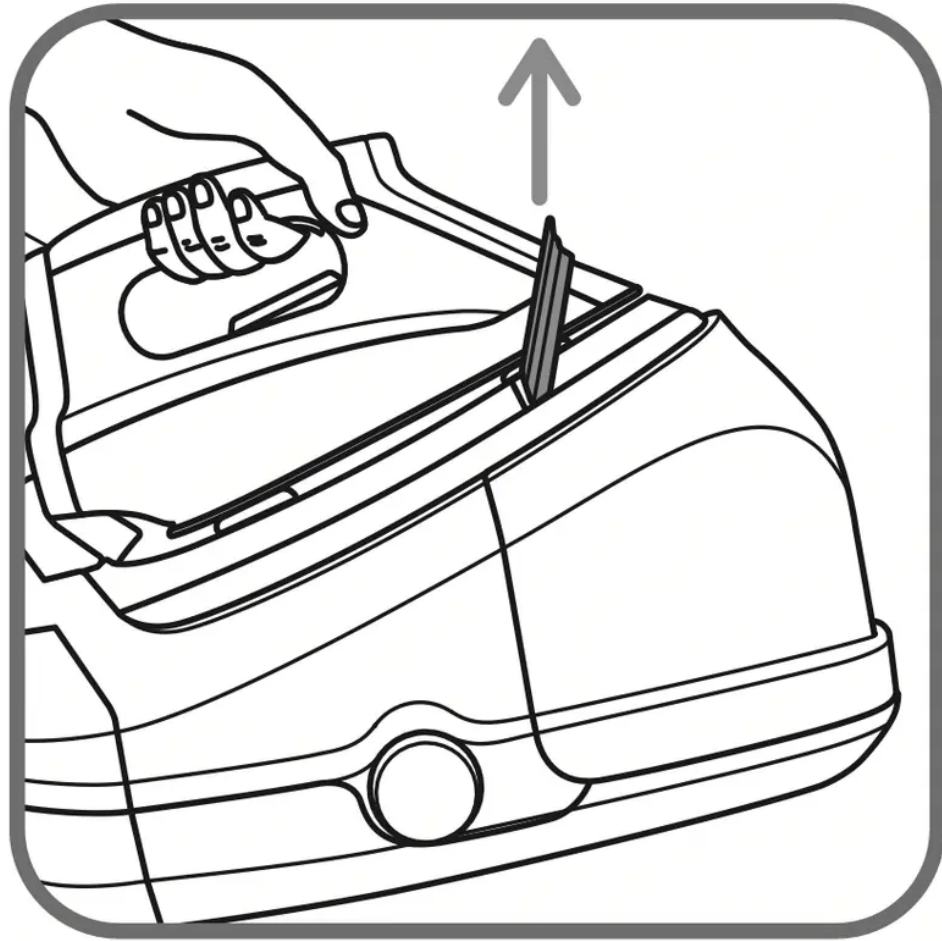
The safety lock allows you to carry your steam generator by the iron handle:

- Place the iron on the iron rest of the steam generator and lock it into place (you will hear an audible “click” sound) fig. 1.



**fig.1**

- Hold the iron by its handle in order to transport your steam generator - fig. 3.



**fig.3**

## **Water recommendations**

### **Tap water**

- Rowenta steam generators are designed to be used with UNTREATED TAP WATER. If your water is very hard, Rowenta recommends mixing half untreated tap water with half distilled water which reduces the hardness.

### **Softened water :**

- There are many types of household water softeners and the water from many of them is perfectly acceptable for use in the steam generator. However, some types of softeners, particularly those that use chemicals such as salt, can cause the appliance to leak or spit during use, this is notably the case with filtering jugs. Therefore we would not recommend using this type of water.
- If you experience this type of problem, we recommend that you try using untreated tap water or store-bought distilled water which can be mixed 50% distilled with 50%

untreated tap water. Once you have changed water it will take several uses to correct the problem. Rowenta recommends trying the steam function for the first time on an old towel or cloth that can be discarded to avoid potentially damaging your clothes.

**Always remember:**

- Heat concentrates the elements in water during evaporation. The types of water listed below may contain organic waste, mineral or chemical elements that can cause spitting, brown staining or premature wear of the appliance: water from clothes dryers, scented or softened water, water from refrigerators, batteries, air conditioners, rain water, boiled, filtered or bottled water. These types of water should not be used in your ROWENTA steam generator.

**Preparing your steam generator**

- Place the steam generator on a flat, stable, horizontal and heat-resistant surface.

- Lift the removable water tank (located at the front of the steam generator) pressing on the lock screw located on the tank handle – fig. 4.



**fig.4**

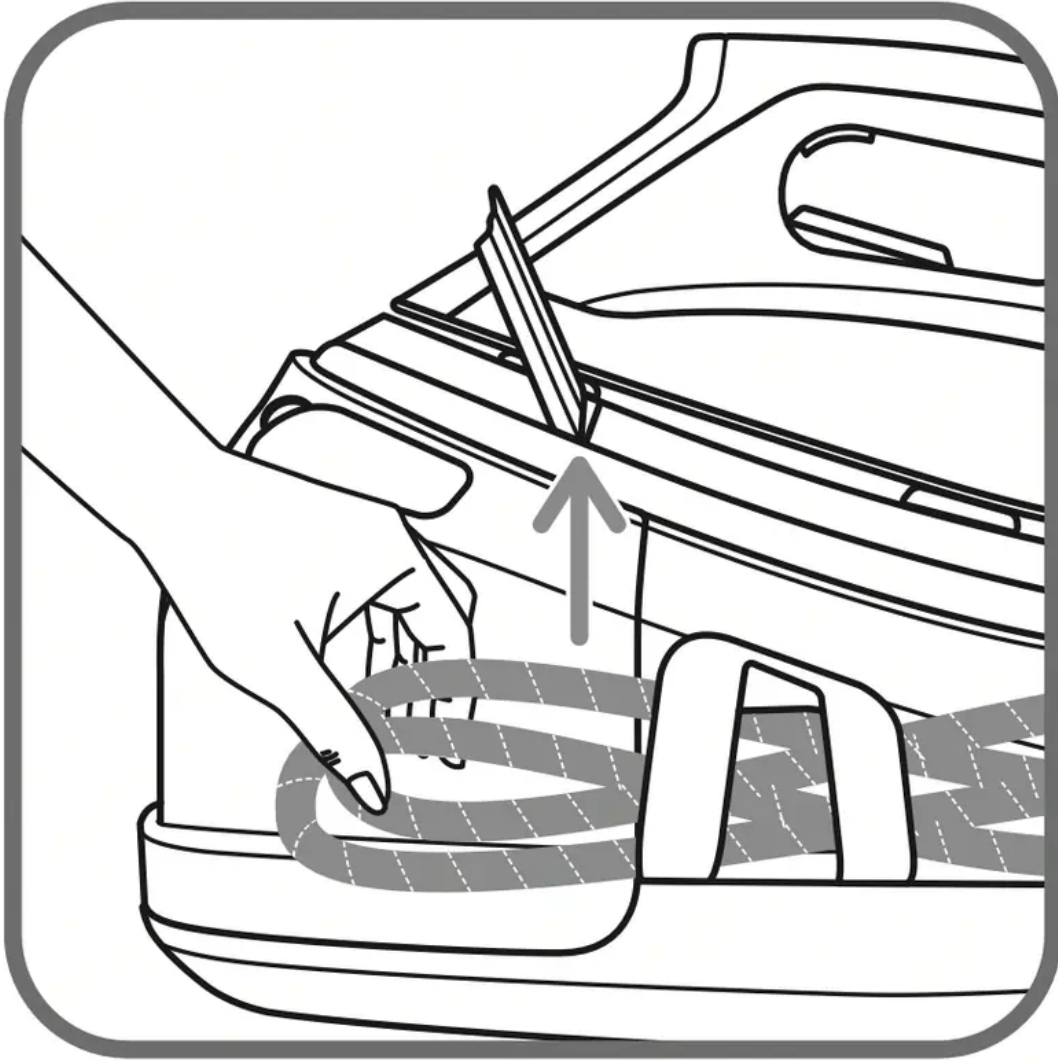
- Fill the tank with untreated tap water, taking care not to exceed the maximum level - fig. 5.



**fig.5**

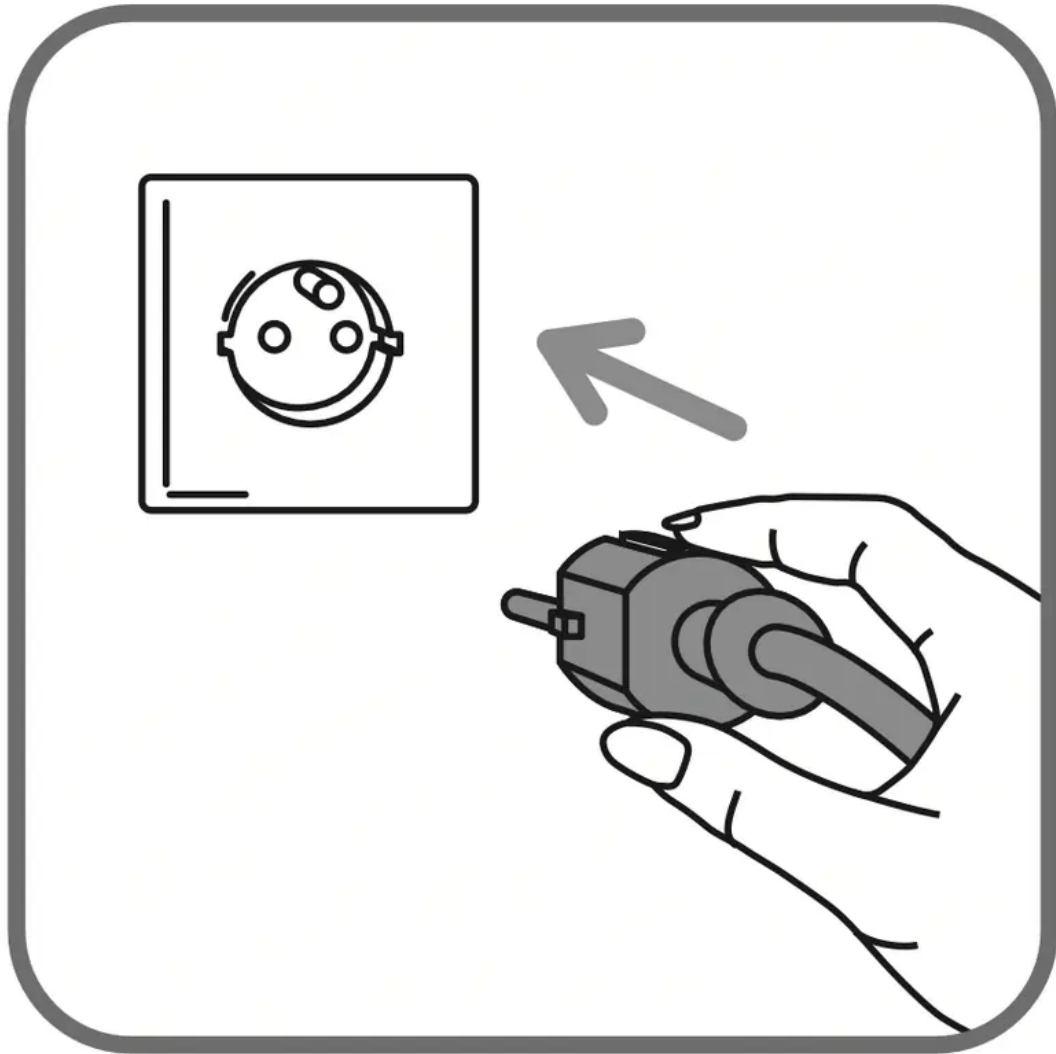
- Slide the tank back into its housing until it “clicks” into place.

- Unwind the electrical power cord it completely and remove the steam cord from its housing- fig.6.



**fig.6**

- Plug your steam generator into a mains socket with an earth pin- fig.7.

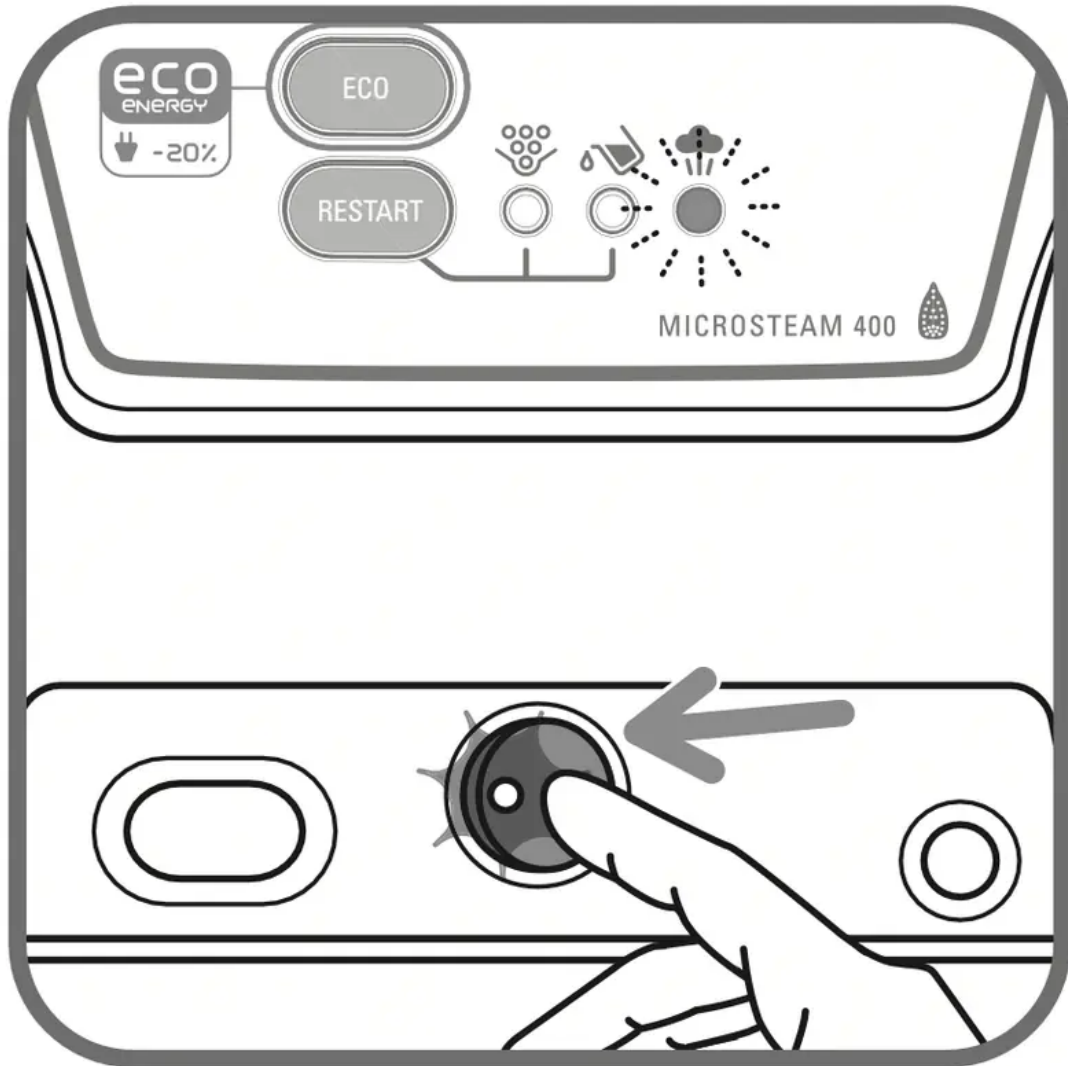


**fig.7**

## USE

### Switching on your steam generator

- Press on the on / off switch - fig. 8, it begins flashing. The green light located on the control panel flashes



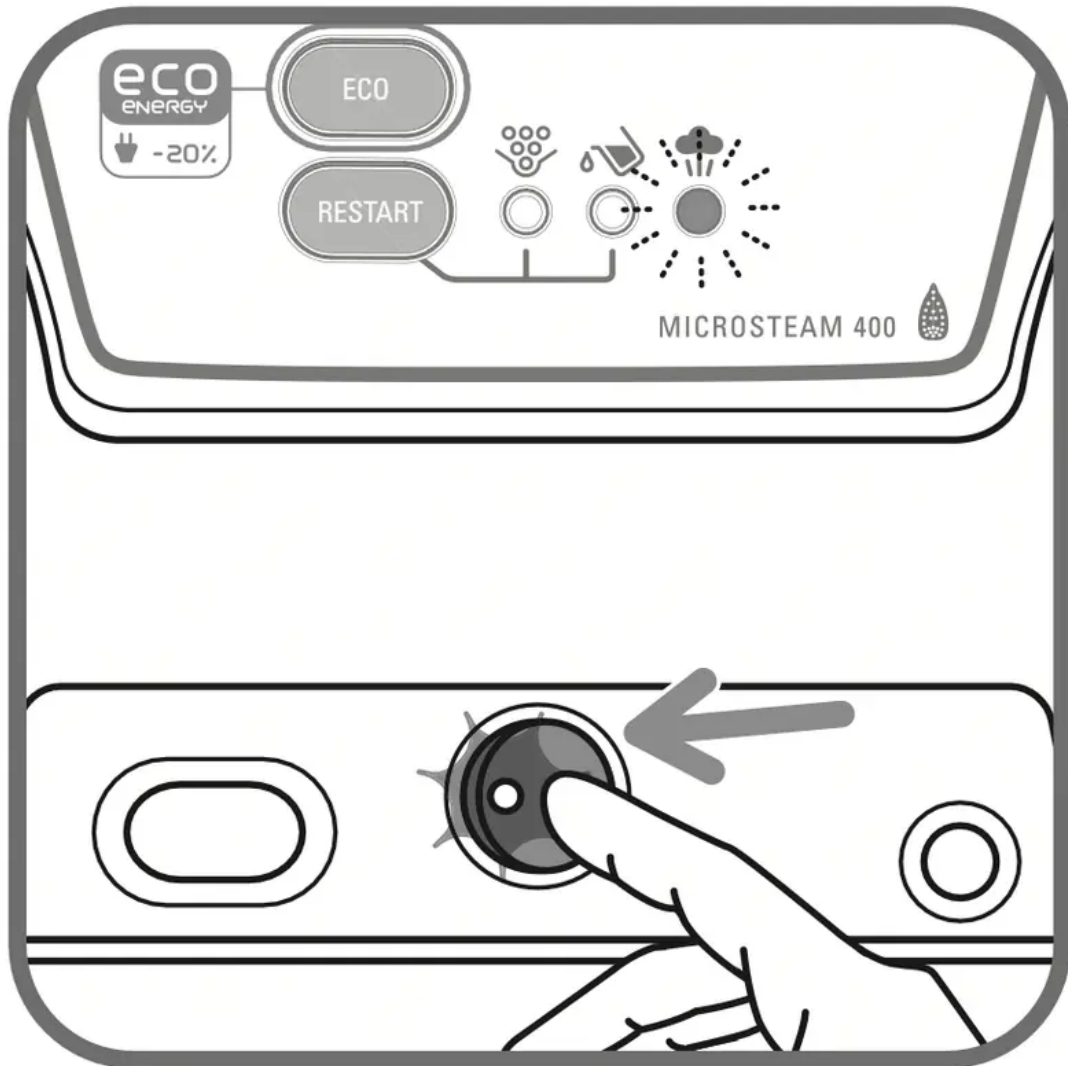
**fig.8**

- When starting, and regularly while it is being used, your steam generator's electric pump injects water into the boiler. It makes a noise but this is quite normal.
- The steam generator and the iron are ready for use when the steam indicator light is on and the iron light goes out.

The first time the appliance is used, there may be some fumes and a slight smell this is not harmful and will quickly disappear.

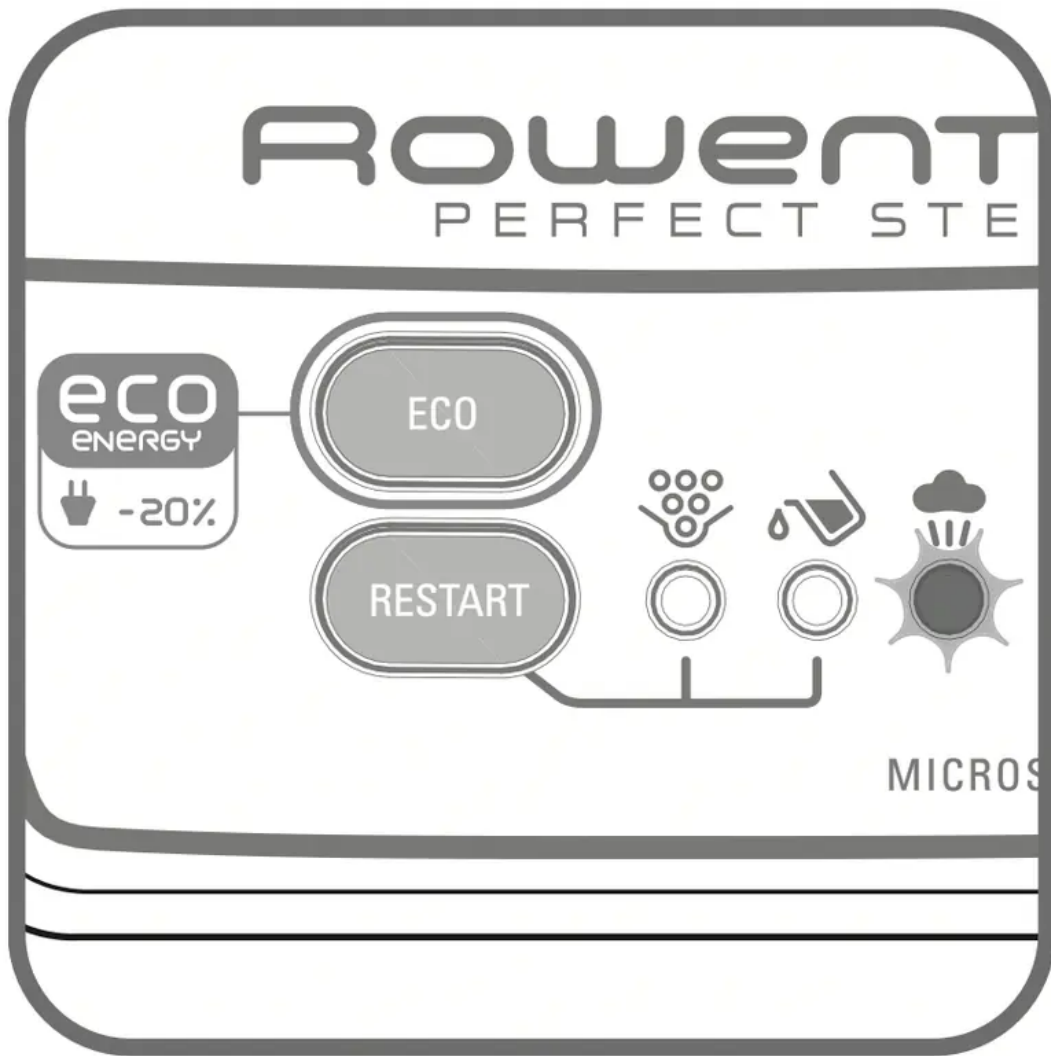
## Operating the control panel

- Flashing green light - fig. 8 : the water is heating up in the boiler.



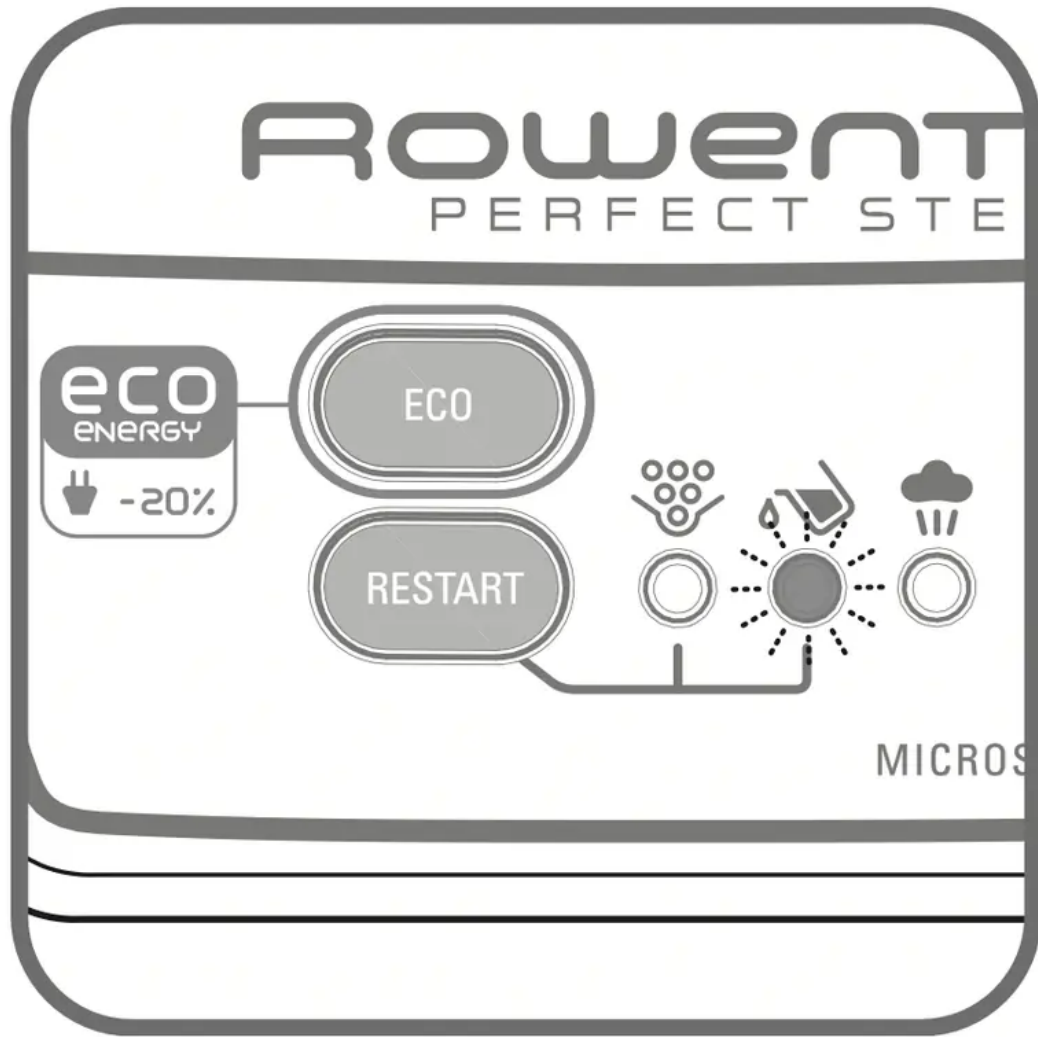
**fig.8**

- Continuous green light - fig. 10 : steam is ready for use.



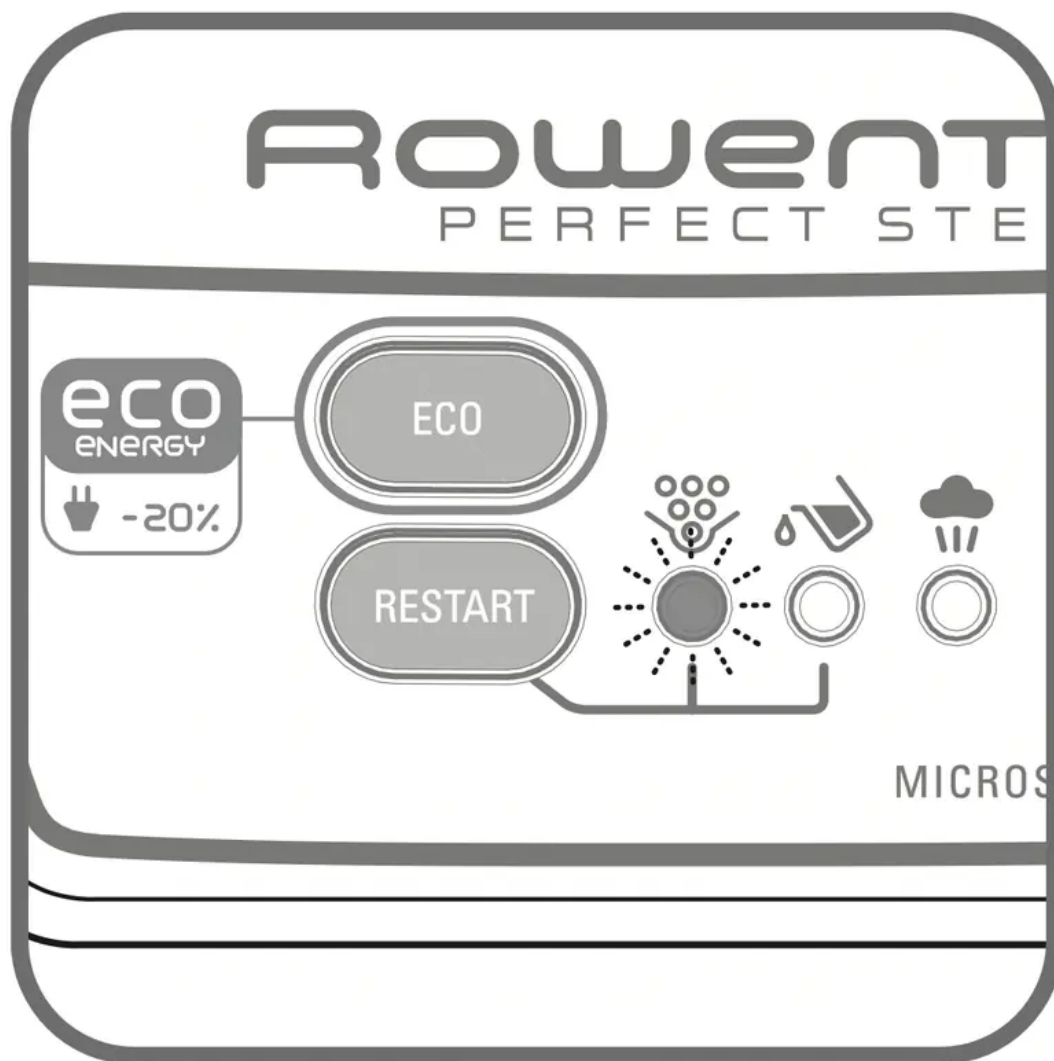
**fig.10**

- Flashing red light - fig. 13 : the tank is empty.

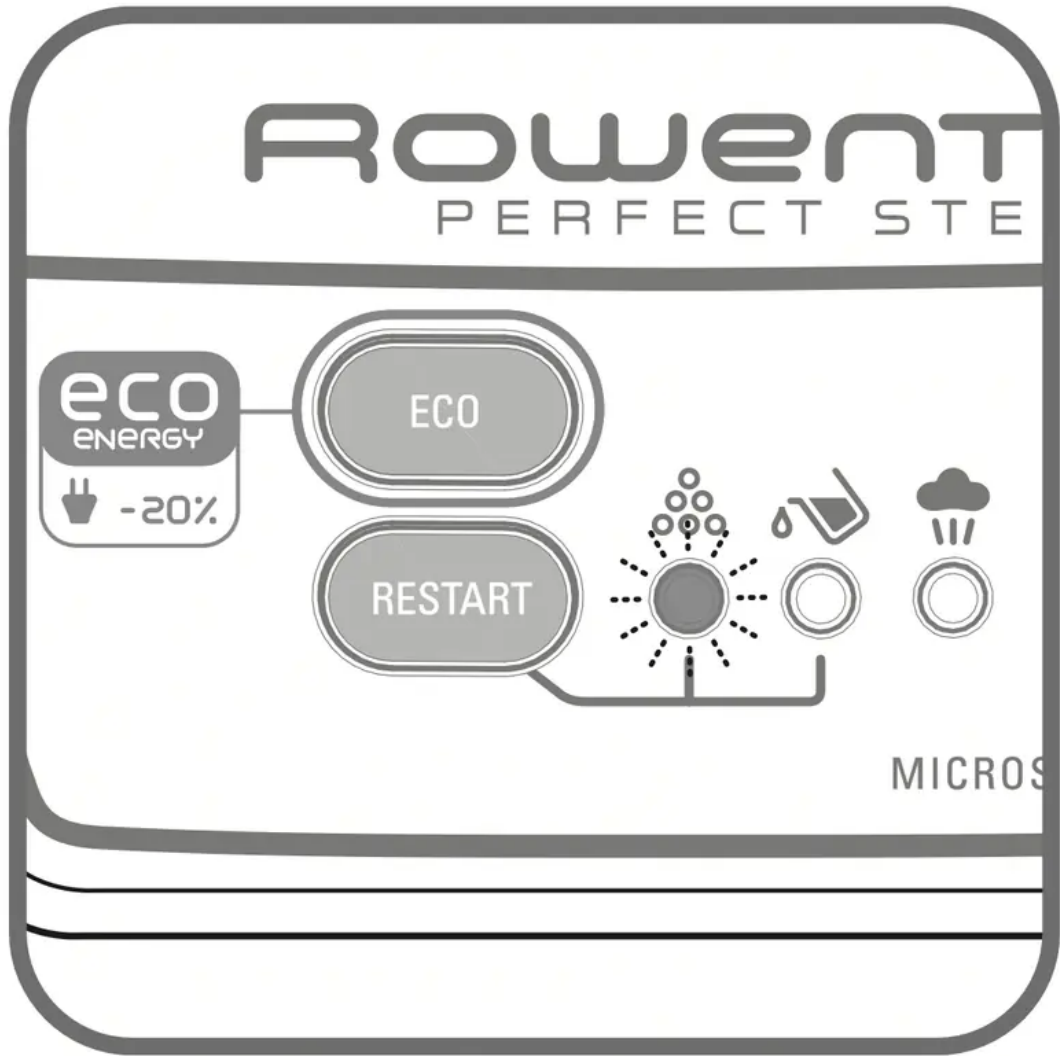


**fig.13**

- The “Calc Away System” or the “boiler rinse” orange indicator flashes - fig. 15 or fig. 21 (according to model) : the collector / boiler needs to be rinsed.



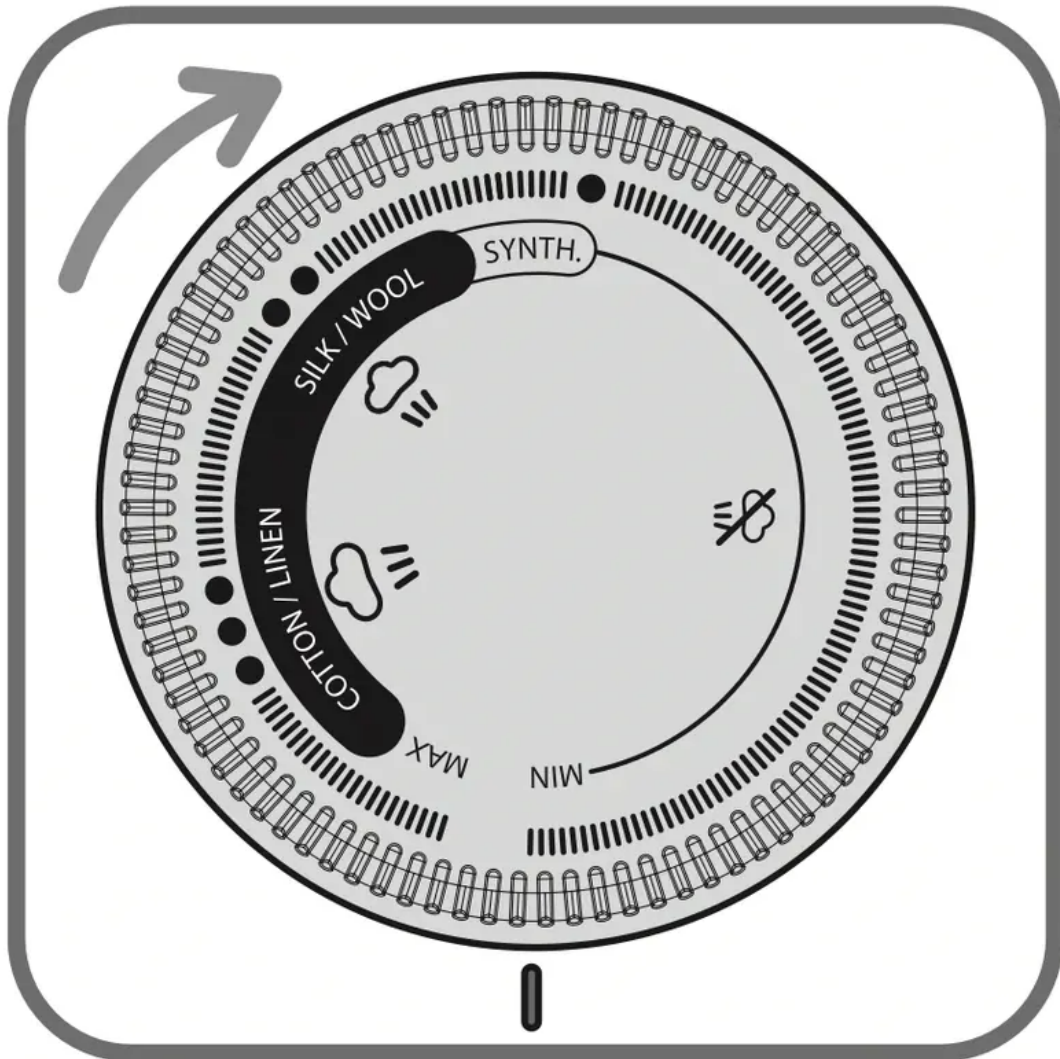
**fig.15**



**fig.21**




## Using your steam generator

- Place the iron's temperature control - fig. 9 to the type of fabric to be ironed (see table below).



**fig.9**

- The iron temperature control light turns on. Important: whenever you start using your iron and whenever you reduce the temperature during use, the iron is ready for use when its indicator light goes out and when the green light located on the control panel comes on and remains on.
- During use, when you increase the temperature of the iron, you can start ironing immediately.

TYPE OF FABRIC	SETTING TEMPERATURE
<b>SYNTHETICS</b> (Polyester, Acetate, Acrylic, Polyamide)	• 
<b>SILK / WOOL</b>	• • 
<b>COTTON / LINEN</b>	• • • 

- **ECO Mode:** Your steam generator has an ECO mode function which uses less power whilst still guaranteeing a sufficient steam output for you to iron your garments properly.



In order to use this function, once the thermostat of your iron has been correctly set (see table above), press on the ECO button located on the control panel.

The ECO mode can be used on all types of fabrics, nevertheless for very thick or very creased fabrics we recommend that you deactivate ECO mode (by pressing the ECO button again) to guarantee the best results.

- During ironing the iron indicator light switches on and off according to heating requirements but this has no effect on use.

- To obtain steam, press on the steam control button beneath the iron handle and keep it pressed - fig. 11. The steam will stop when you release the button.



**fig.11**

- Always spray starch on the reverse side of the fabric to be ironed.

**Recommendations:** To prime the steam circuit, either before using the iron for the first time, or if you have not used the steam function for a few minutes, press the steam control button several times in a row – fig.11, holding the iron away from your clothes. This will enable any cold water to be removed from the steam circuit.



**fig.11**

**Iron temperature control setting:** Your iron is quick to heat up so start with fabrics to be ironed at a low temperature and finish with those which need higher temperatures. Mixed fibre fabrics: set the ironing temperature to the setting for the most delicate fabric. For delicate fabrics (•), press the steam control button (under the handle of the iron) intermittently to avoid any water droplets appearing with the steam.

If you set your thermostat to “min”, the iron will not become hot.

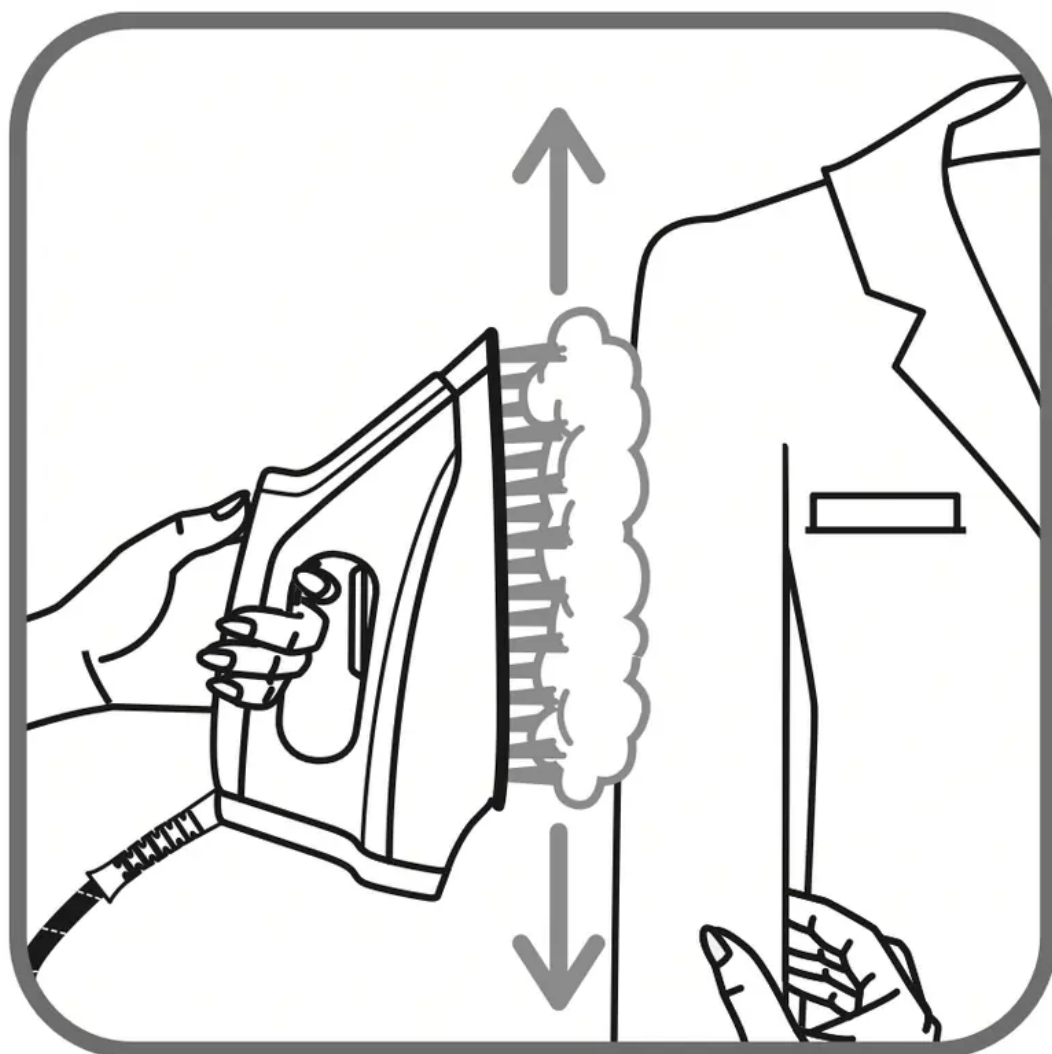
When taking a break from ironing, never place the iron on a metal rest plate, which could damage the iron rest plate of the unit. It is equipped with non-slip pads and has been designed to withstand high temperatures.

## **Vertical steam ironing**

- Set the temperature of the iron to the max position.
- Hang the garment on a coat hanger and hold the fabric slightly taut with one hand.
- Press repeatedly on the steam - fig.11 control button (beneath the iron handle) moving the iron from top to bottom - fig. 12.



**fig.11**



**fig.12**

Examples of how to use the vertical steaming function:

- Removing creases directly on hangers from delicate fabrics that you do not want to bring into contact with the hot iron.
- Refreshing a shirt or a suit just before putting it on.

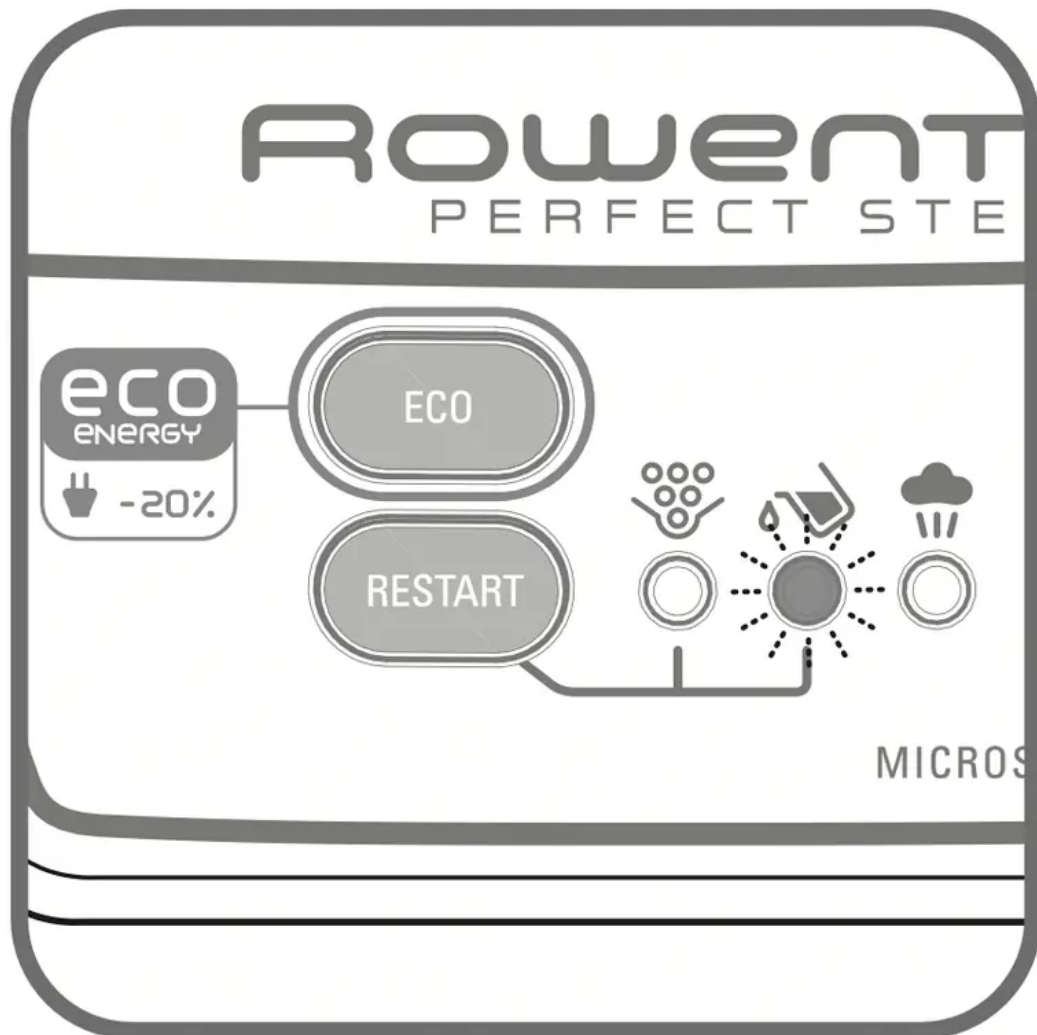
**As steam is very hot:** never attempt to remove creases from a garment while it is being worn, always hang garments on a coat hanger. For fabrics other than linen or cotton, hold the iron a few centimetres from the garment to avoid burning the fabric.

### **Dry ironing**

- Do not press the steam control button.

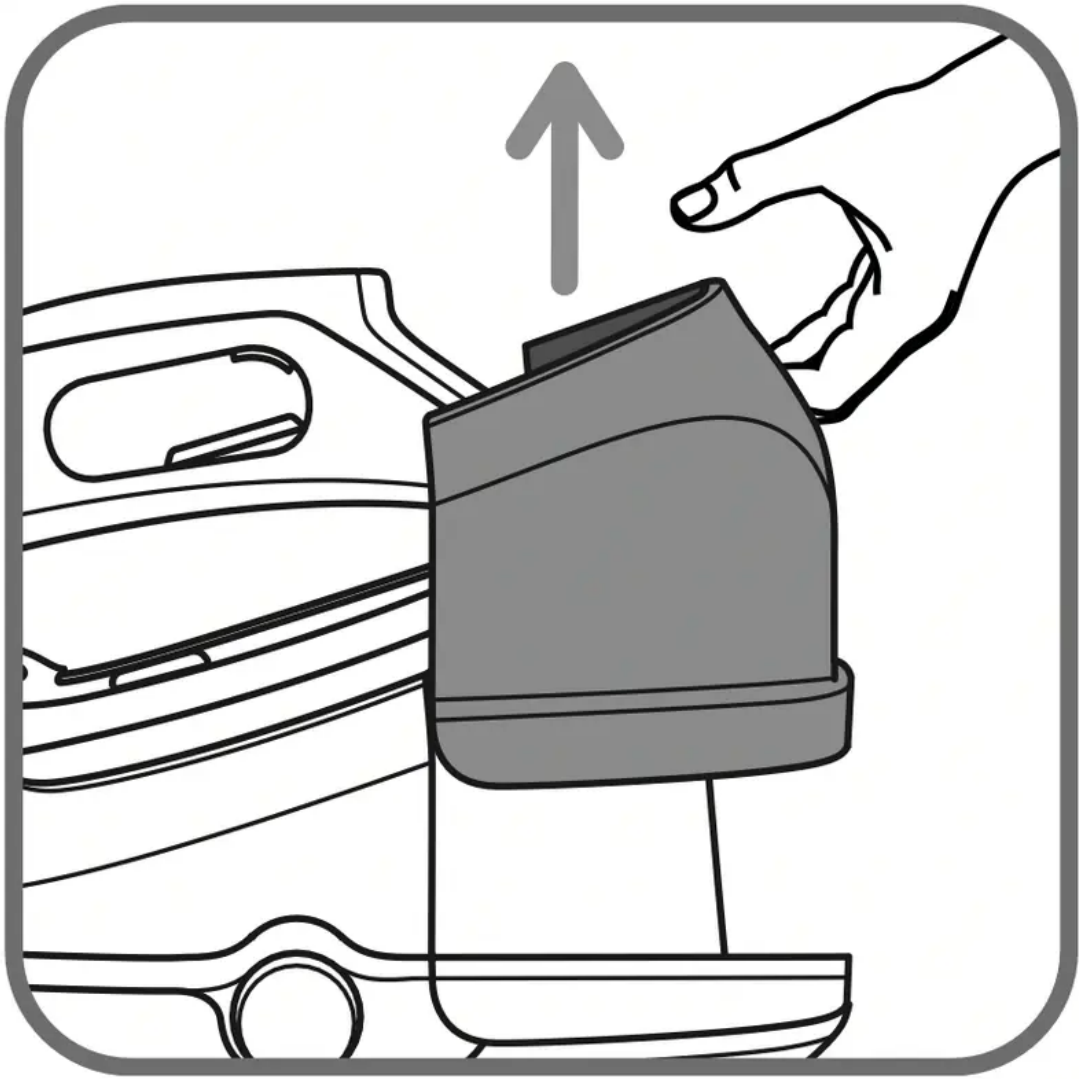
## Fill the water tank again

- When there is no more steam and the “Water tank empty” light flashes - fig. 13: the water tank is empty.



**fig.13**

- Remove the water tank using the handle (on the front of the steam generator) - fig. 14 and fill it - fig. 5 do not fill above the Max. level.



**fig.14**



**fig.5**

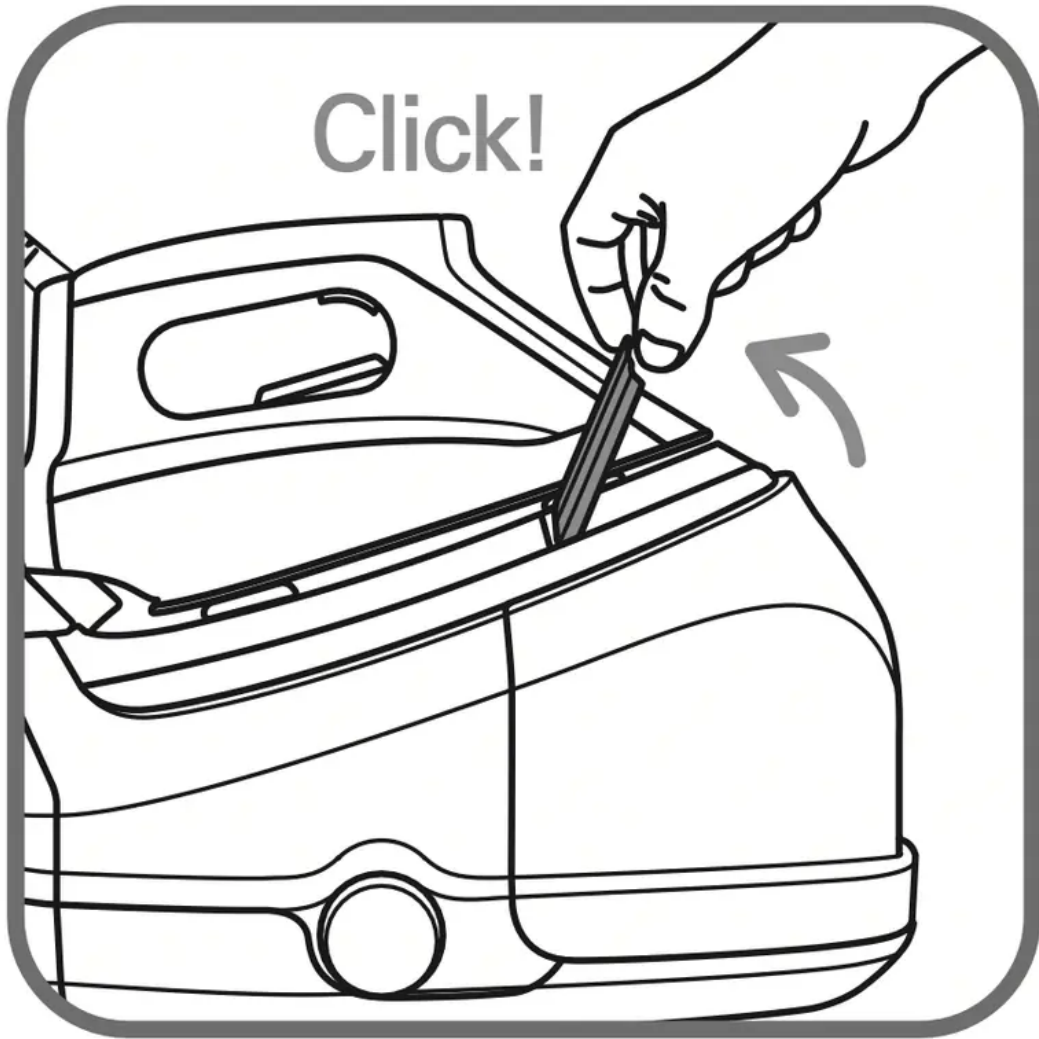
If this occurs, remove the excess water.

- Push the water tank into position until it “clicks” into place. Press the Restart button located on the control panel. The red light turns off.
- The steam generator and the iron are ready for use when the steam indicator light is on and the iron temperature control light goes out.

### **Storing the steam generator**

- Turn off the appliance and unplug it. Place the iron on the iron rest on the steam generator. Lock the iron onto the base unit by pressing it until you hear an audible “click”, so your iron is secure (according to model) – fig 1. Fold the steam cord in two and place

it in its housing. Wind up the power cord and attach it with the velcro.



**fig.1**

- Leave the steam generator to cool for at least one hour before putting it away if it is to be stored in a cupboard or confined space. You can then store your steam generator safely.

## **MAINTENANCE AND CLEANING**

### **Cleaning the generator**

Do not use any cleaning or descaling products for cleaning the soleplate or the base-unit. Never hold the iron or the base unit under the tap.

- **The iron soleplate:** Clean the soleplate of your iron when it is cool with a damp cloth or a non-abrasive sponge.
- **The base unit:** Clean the plastic parts of the appliance occasionally with a soft cloth.

## Easy descaling of your steam generator

Do not use any descaling substances (vinegar, industrial descaling products, etc.) when rinsing the scale collector: they could damage it. Before emptying your steam generator, it must always be left to cool for 2 hours to avoid any risks of scalding.

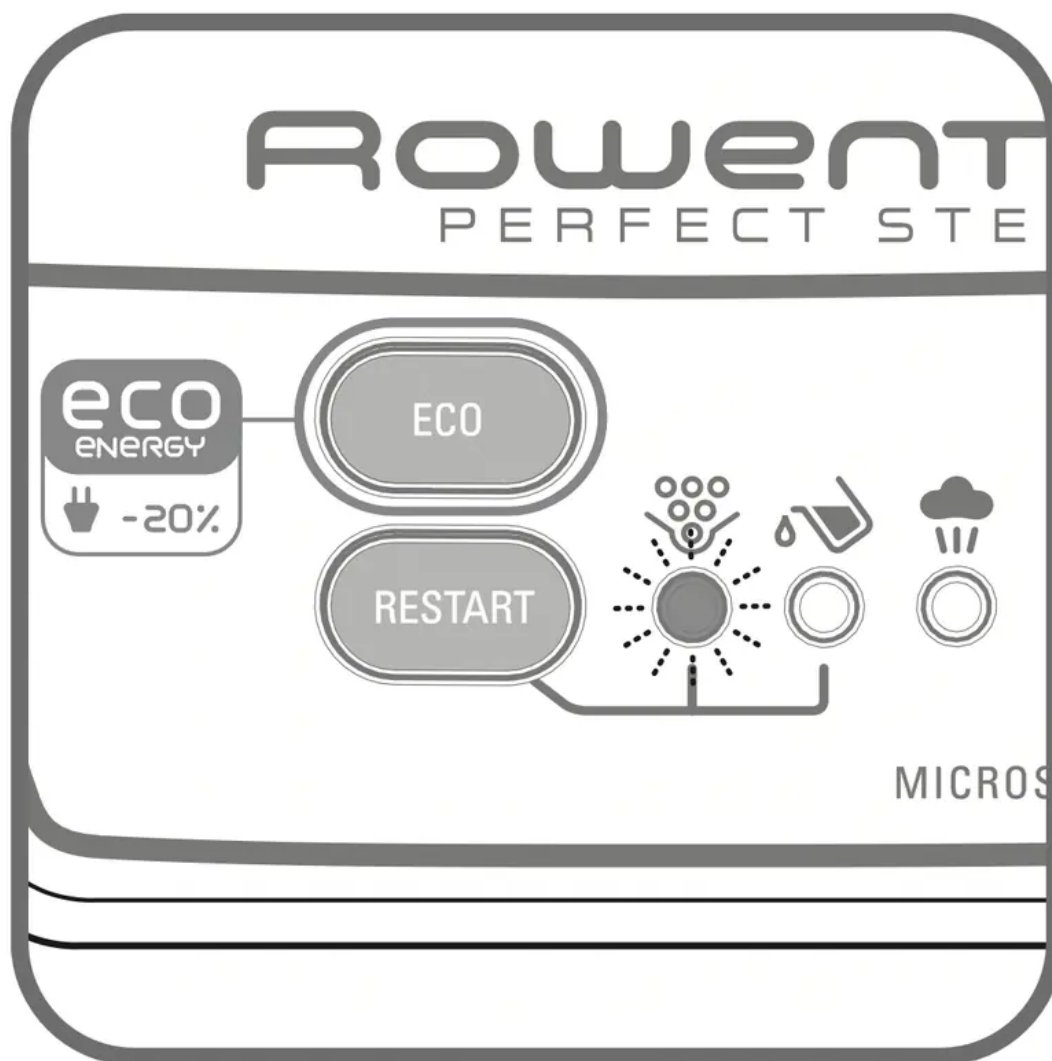


### For models with scale collector

- To extend the life of your steam generator and avoid scale on your ironing, your steam generator is equipped with a built-in scale collector. This collector, located in the boiler, automatically removes the scale that forms inside.

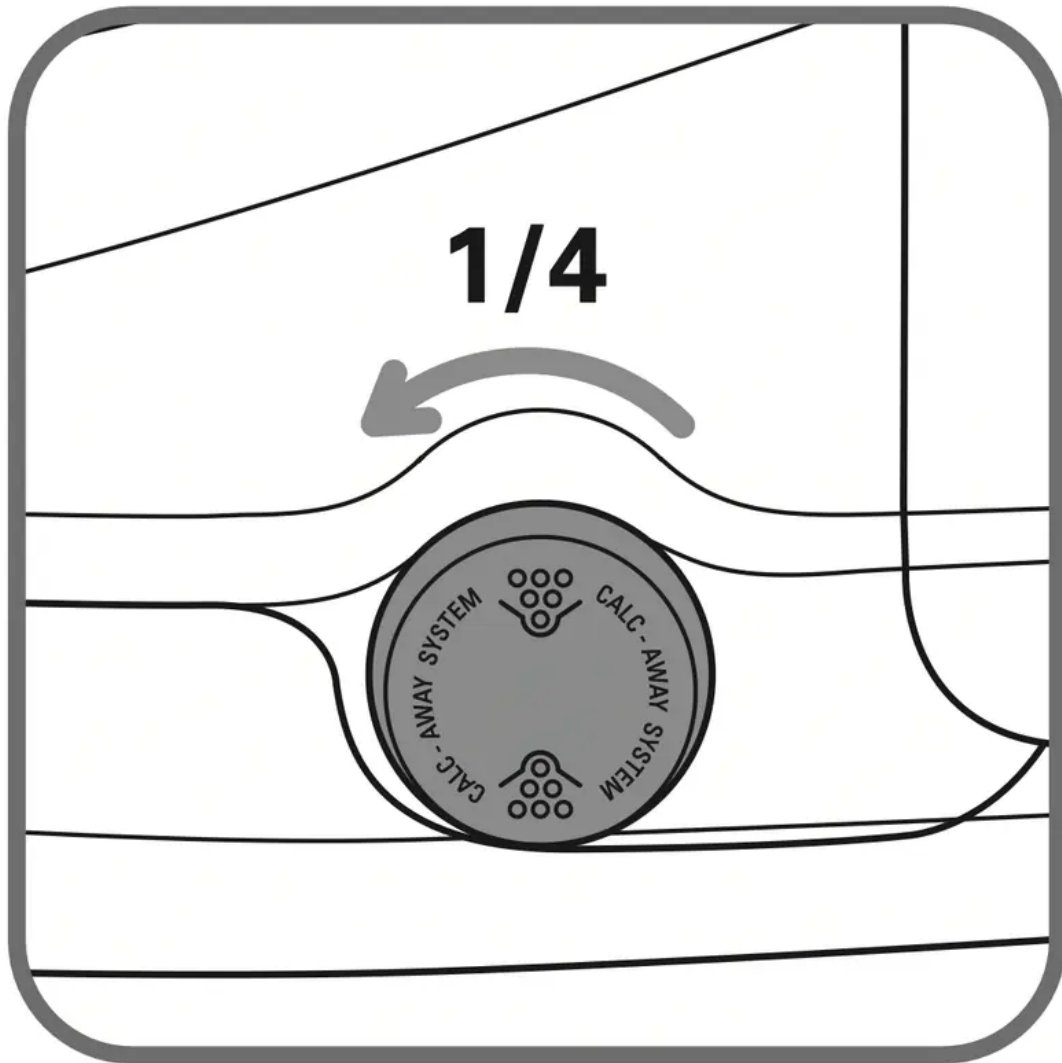
### Operation:

- An orange “Calc-Away System” light located - fig. 15 on the control panel starts flashing to tell you that the scale collector needs rinsing.



**fig.15**

- Once the steam generator has cooled completely, remove the scale collector cover - fig. 16.

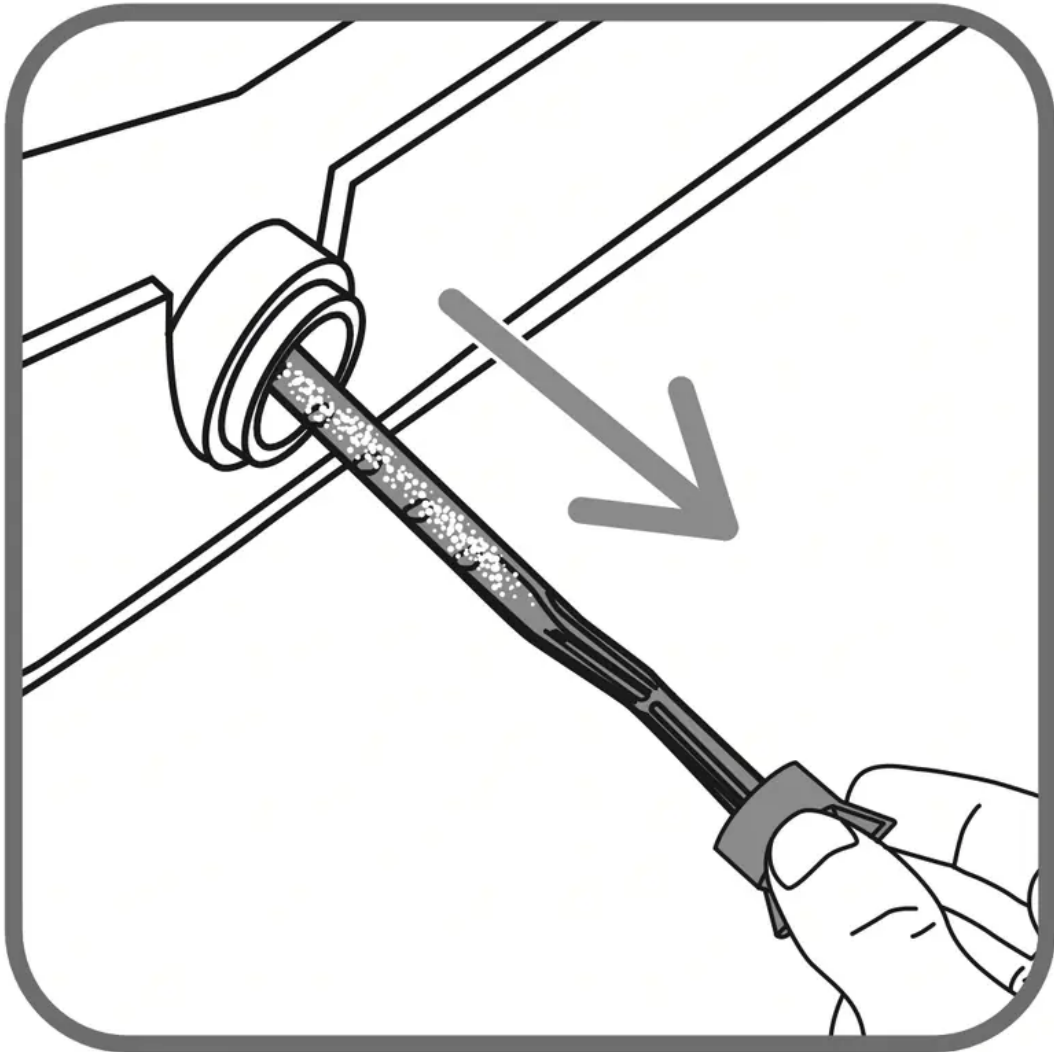


**fig.16**

**IMPORTANT!** This operation must not be carried out unless the steam generator has been unplugged for at least two hours and has cooled down completely.

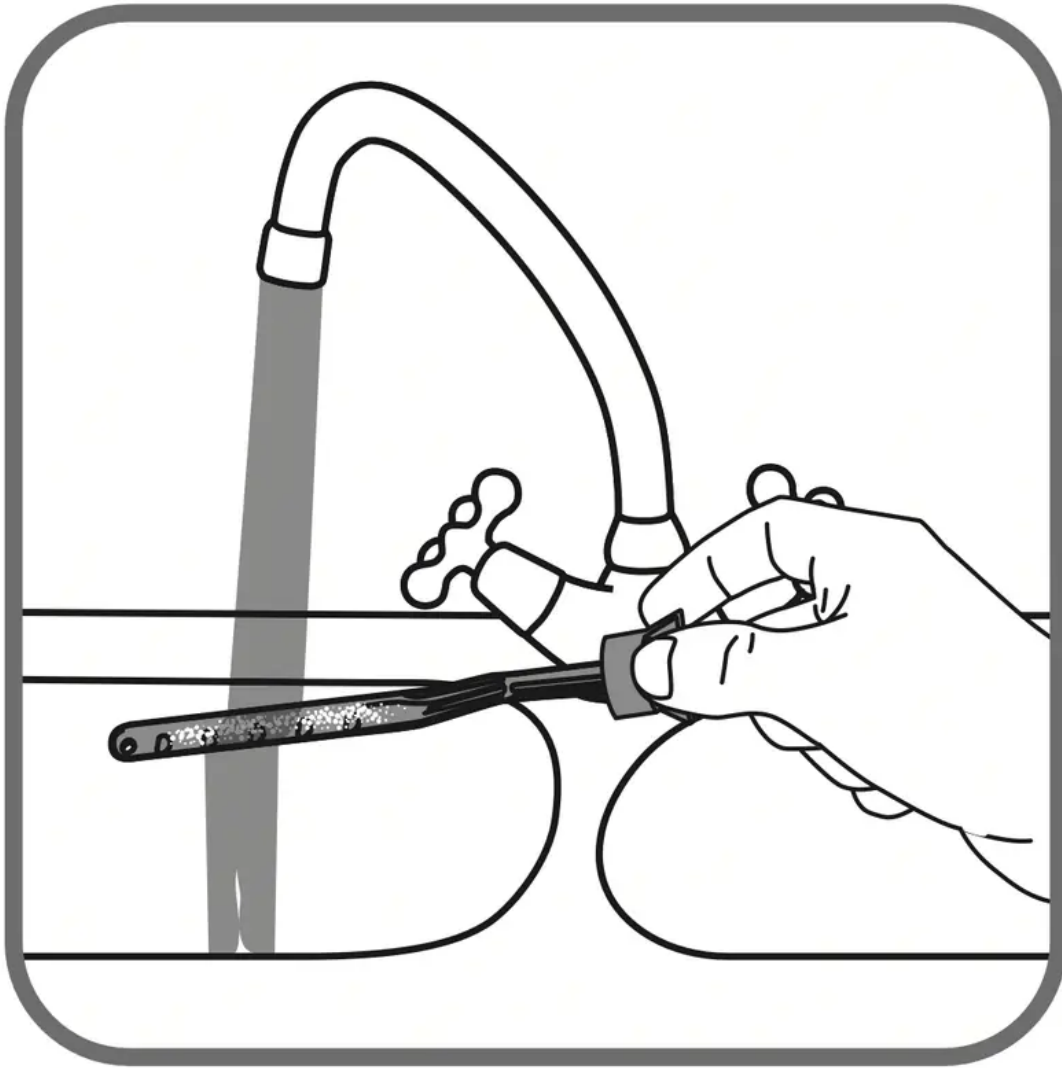
To carry out this operation, the steam generator must be close to a sink as water may come out of the tank when it is opened.

- Unscrew the scale collector and remove it from the housing; it contains the scale that has built up in the tank - fig. 17.



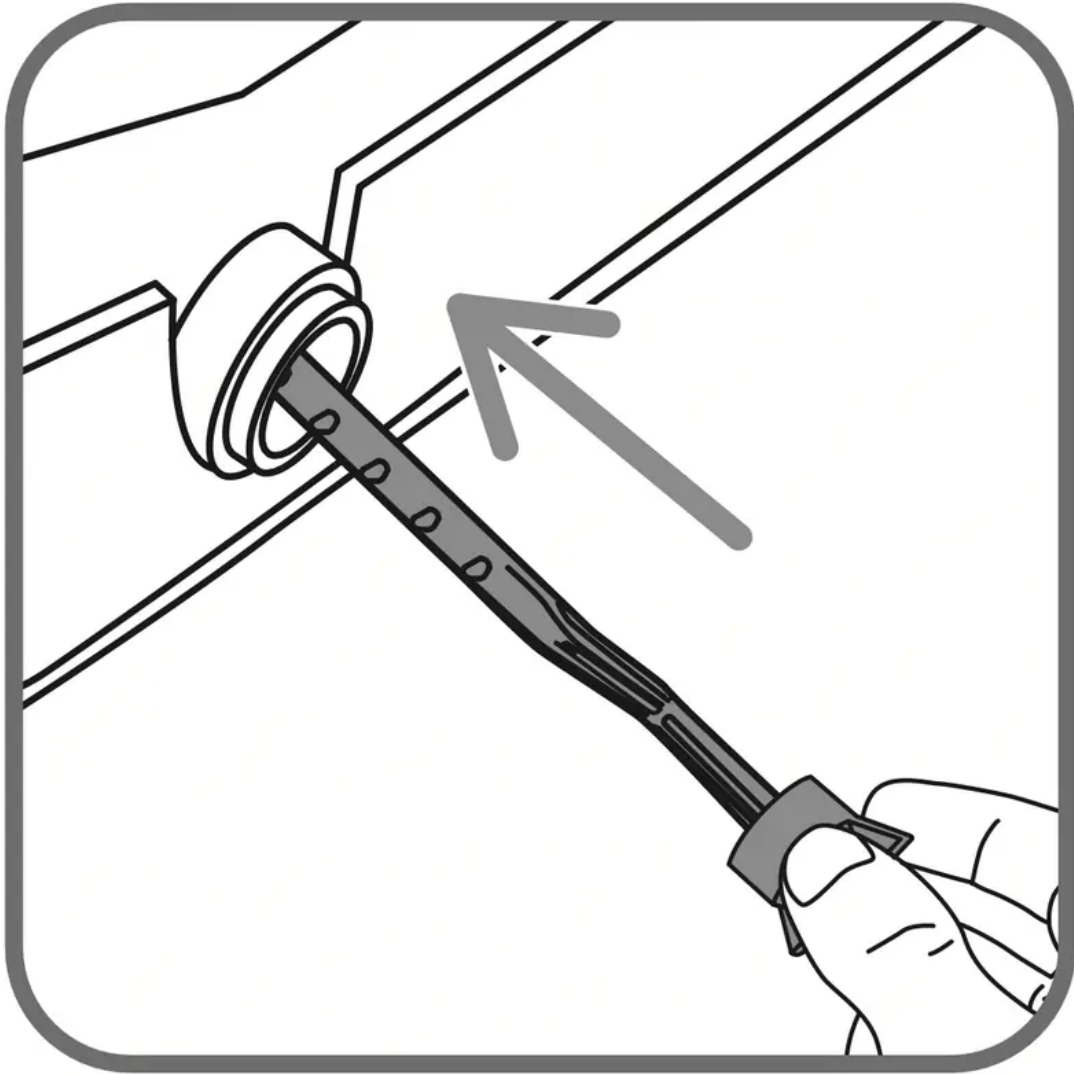
**fig.17**

- To clean the collector properly, just rinse it under running water to remove the scale it contains - fig. 18.



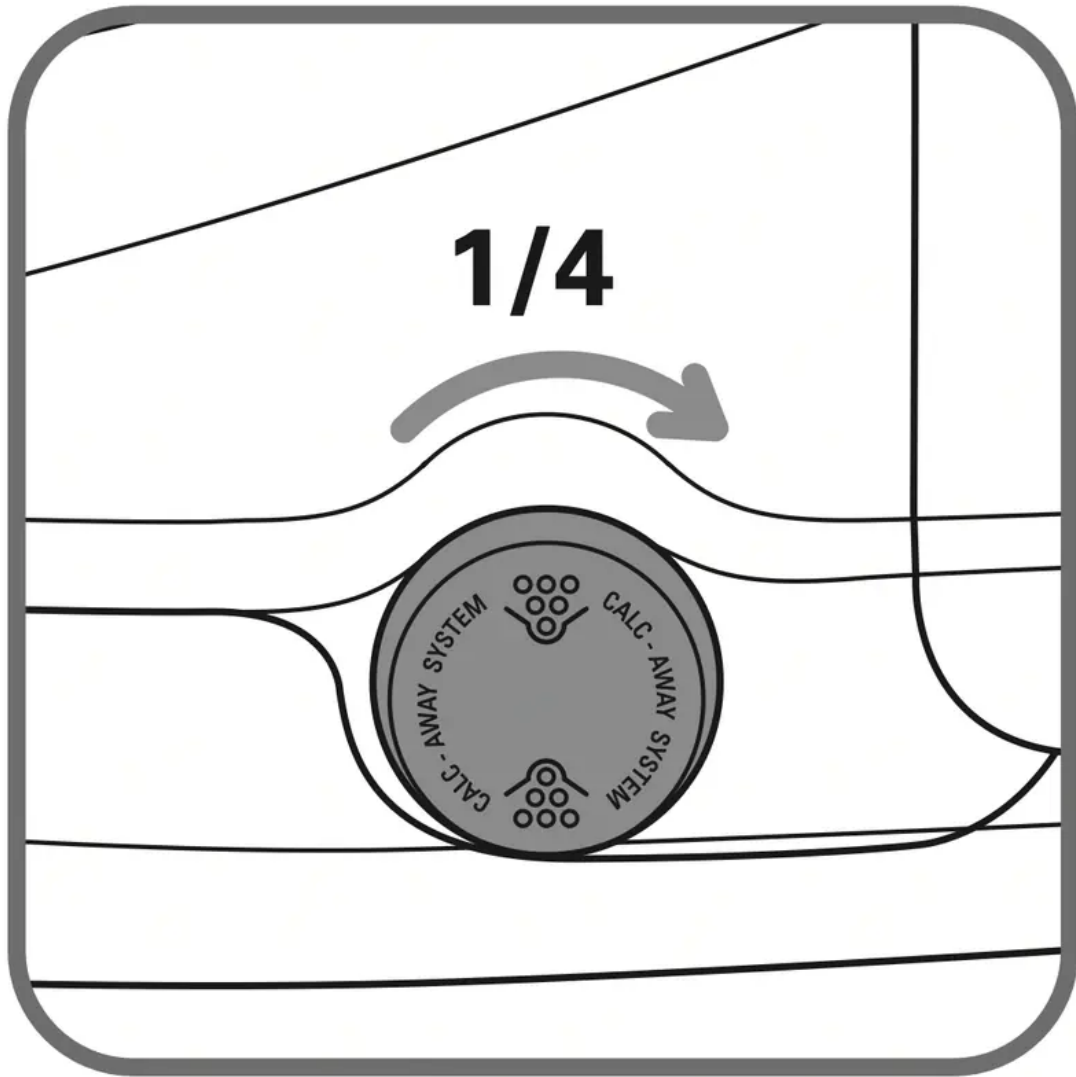
**fig.18**

- Put the collector back into its housing and screw it in completely to keep it watertight - fig. 19.



**fig.19**

- Put the scale collector cover back on - fig. 20.



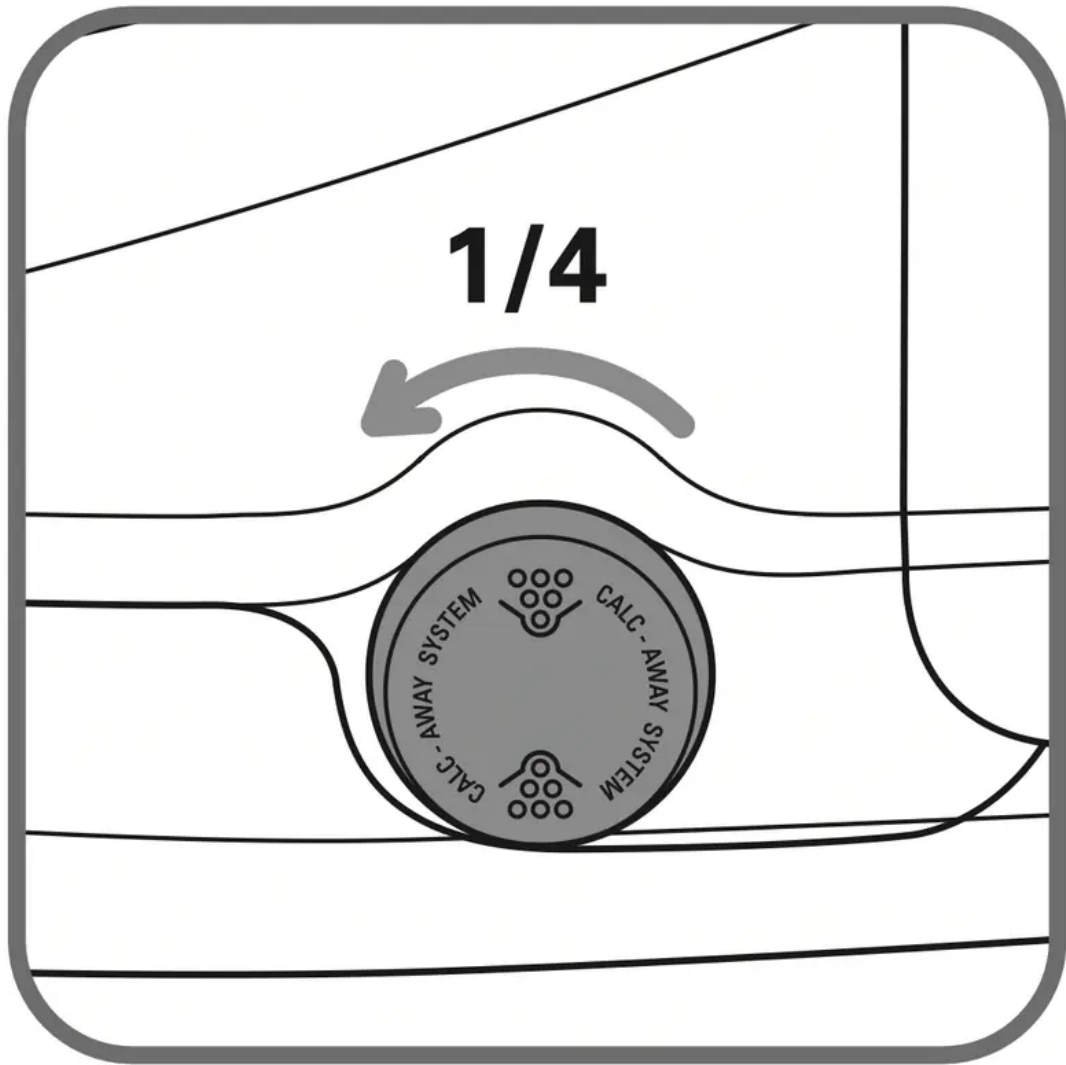
**fig.20**

The next time you use your iron, press the “Restart” button on the control panel to turn off the orange “Calc-Away System” light.

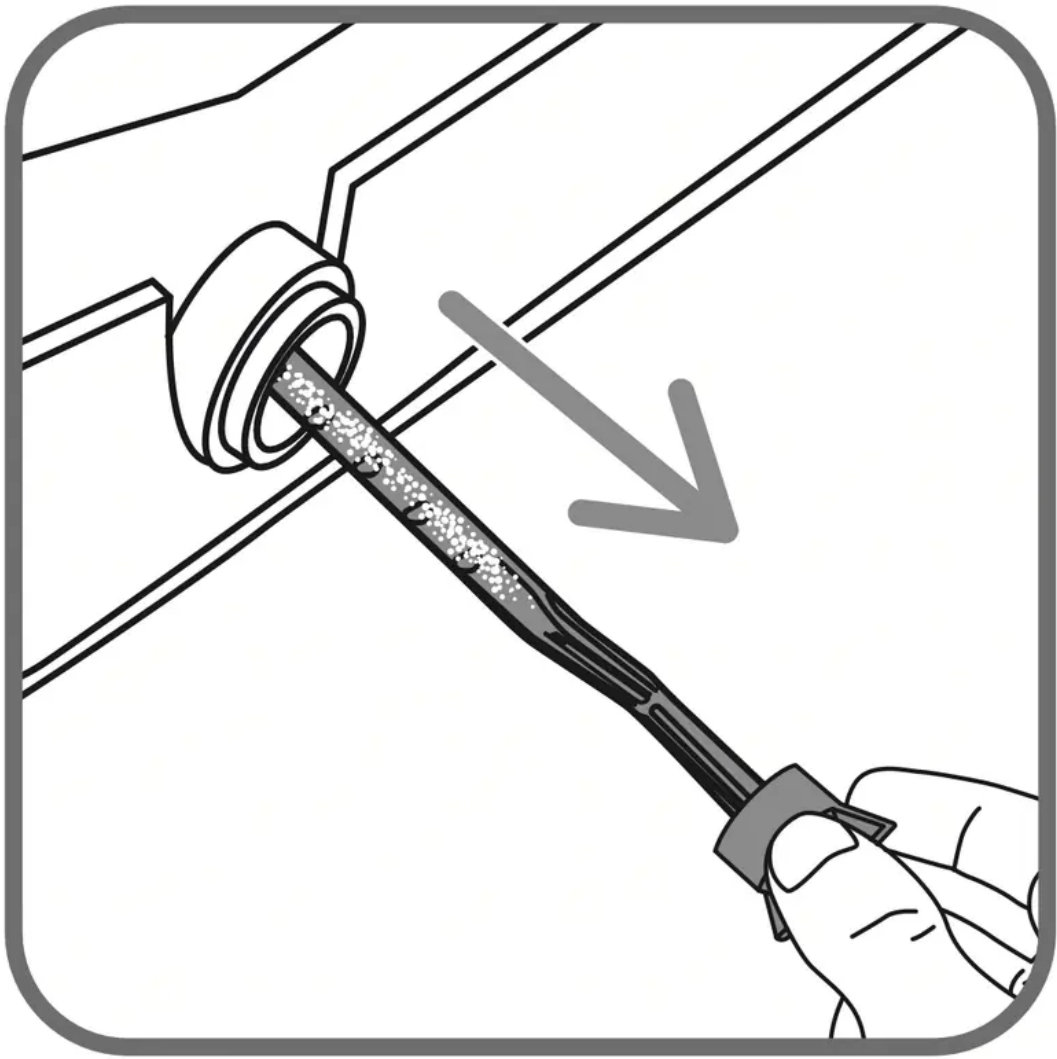
In addition to this regular maintenance procedure, we recommend that you rinse the boiler completely once every 6 months, or once every 25 times you use your steam generator.

- Make sure that the steam generator has been unplugged and allowed to cool for at least 2 hours.
- Place the steam generator on the edge of your sink and the iron to one side, on its heel.

- Remove the collector cover and unscrew the scale collector - fig. 16-17.

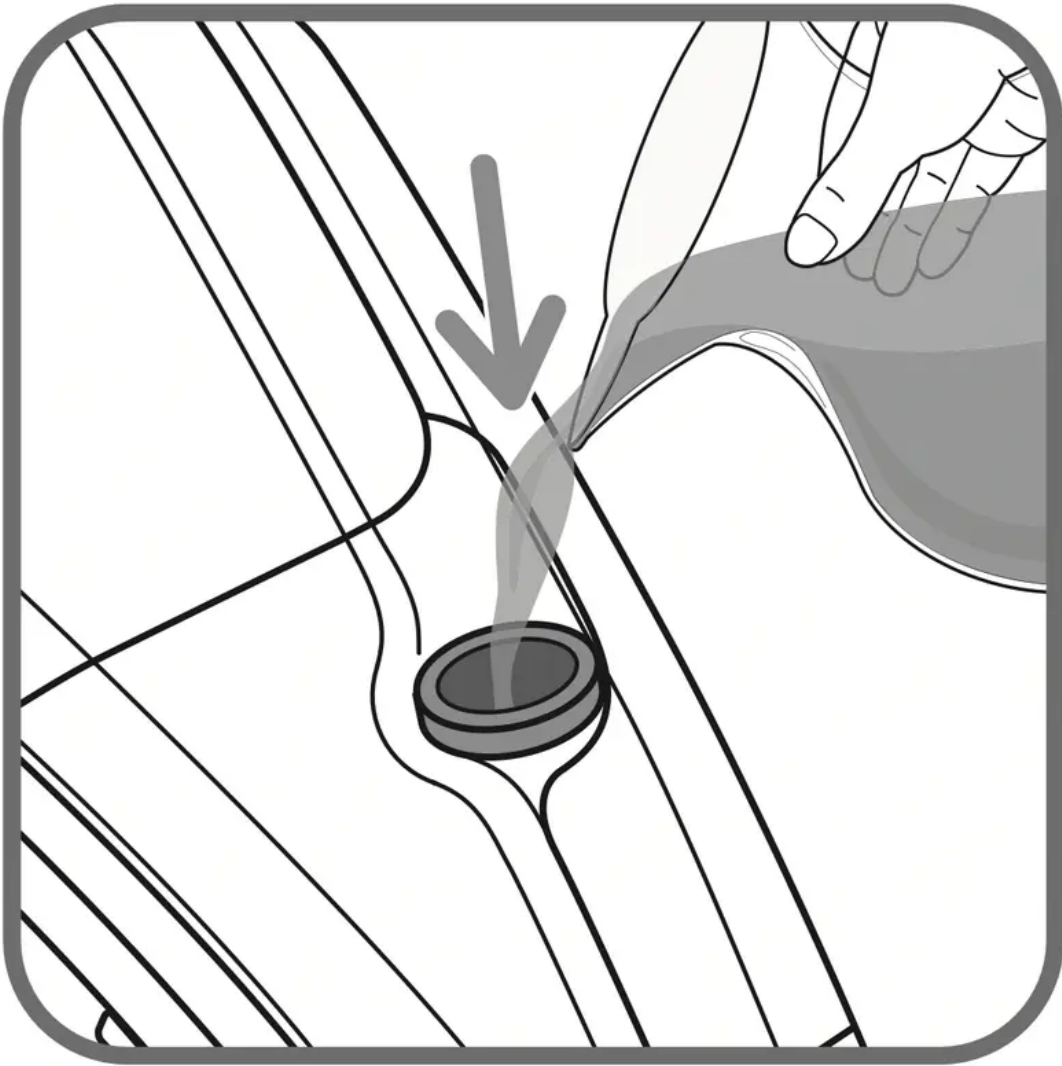


**fig.16**



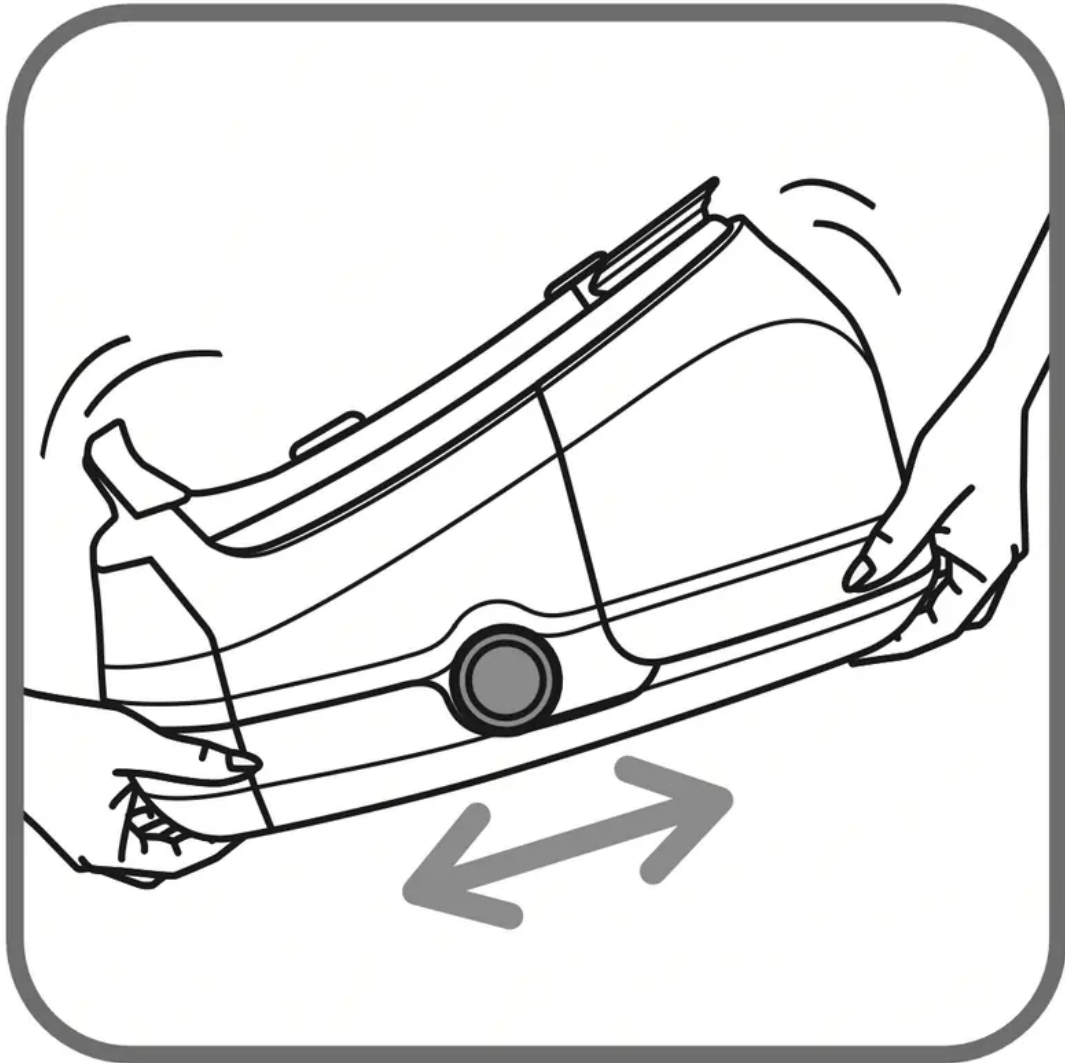
**fig.17**

- Hold your steam generator at an angle and use a jug to fill the boiler with 1/4 litre of tap water.- fig. 24.

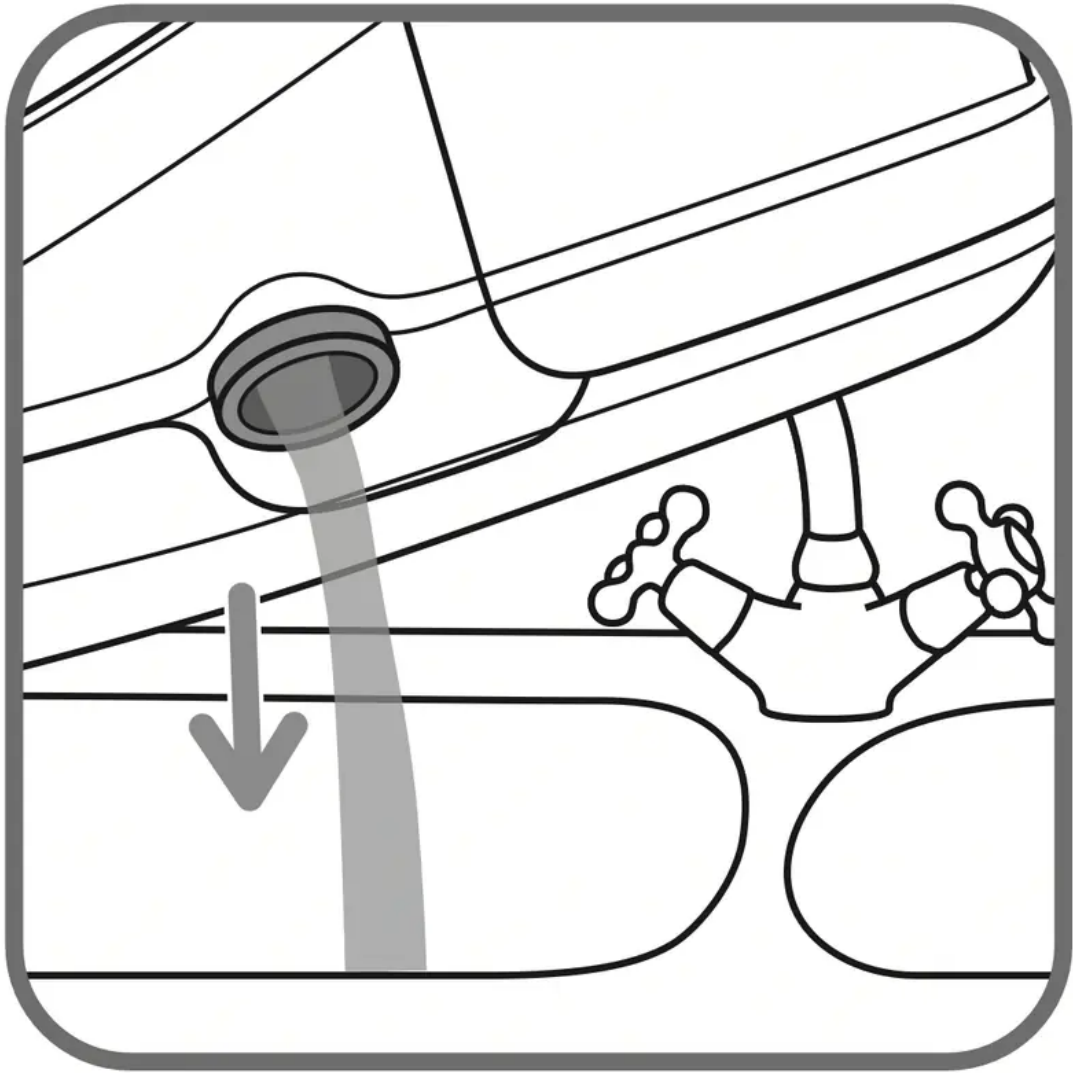


**fig.24**

- Shake the base unit for a few seconds then empty it completely into the sink.fig. 25-26.

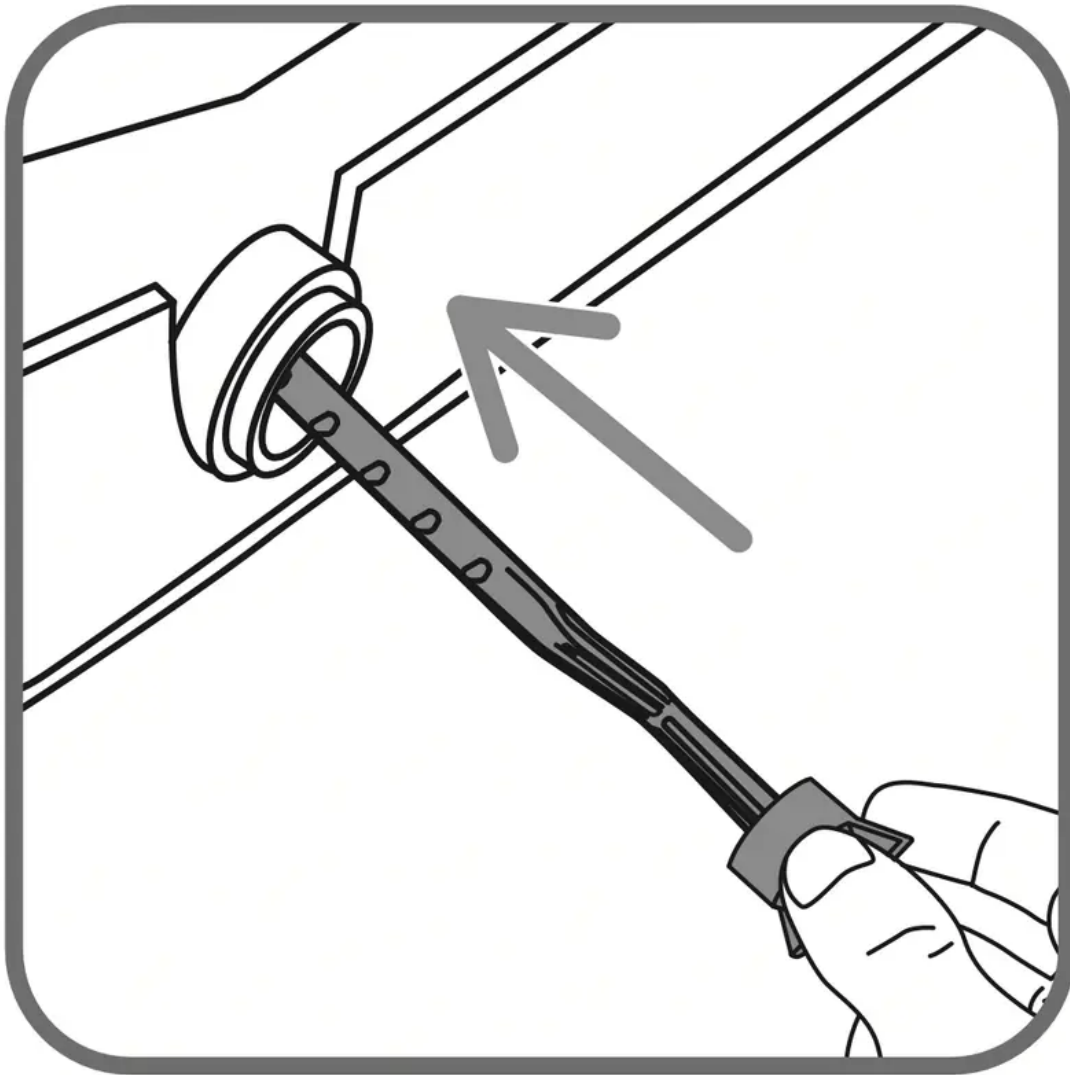


**fig.25**



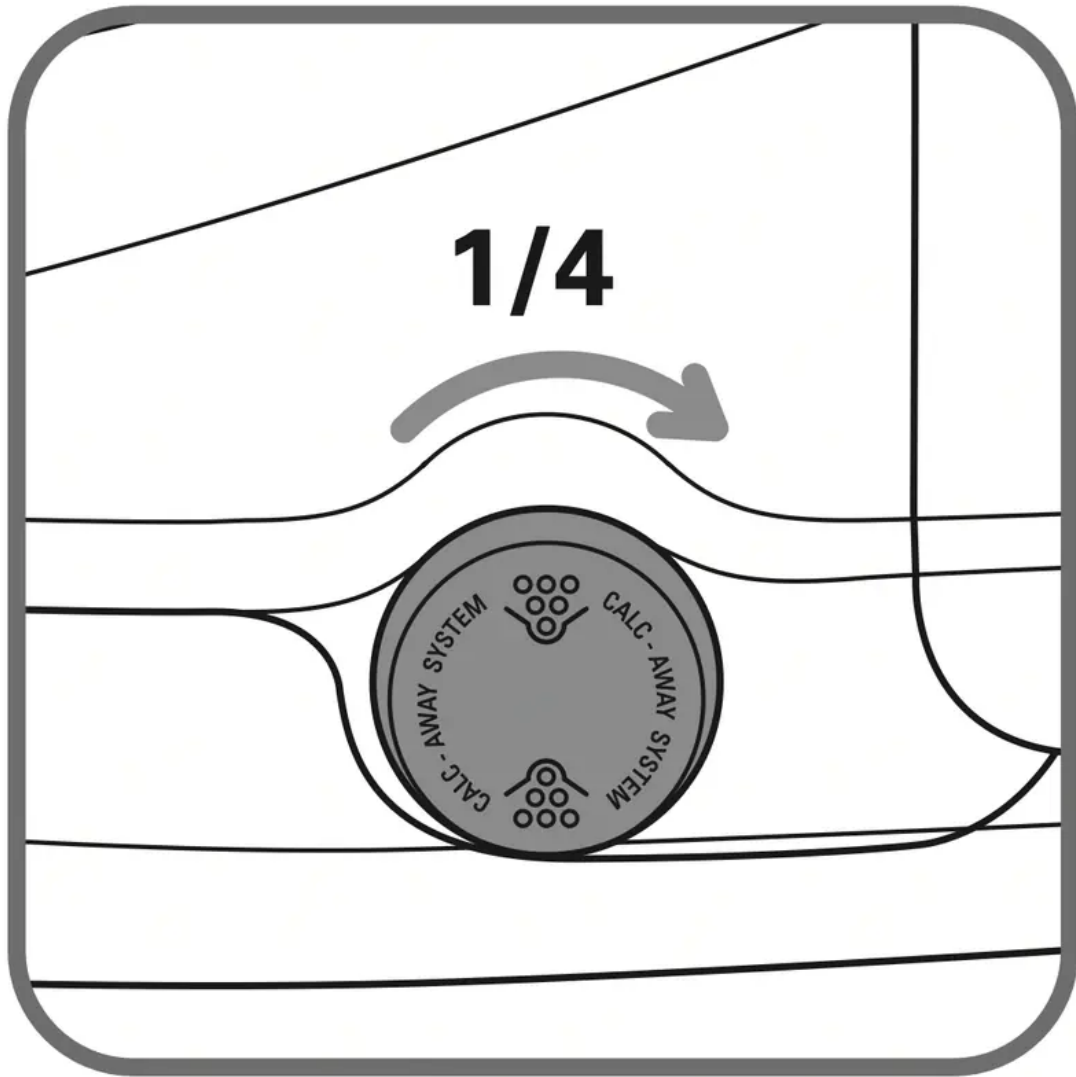
**fig.26**

- Fit the collector back in its housing and screw it on tightly to ensure it is watertight but do not overtighten it - fig. 19.



**fig.19**

- Put the scale collector cover back in place.- fig. 20.

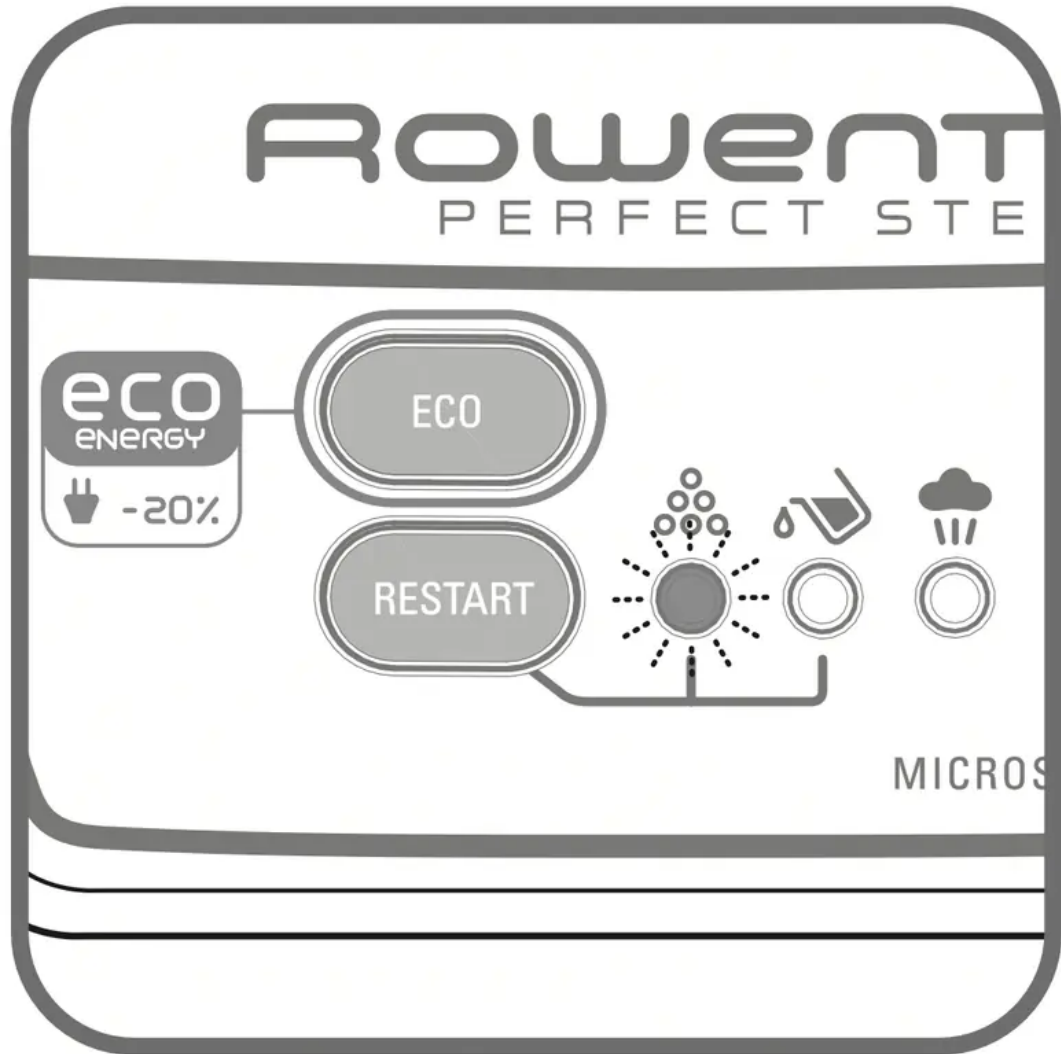


**fig.20**

**Models without scale collector**  .

- To prolong the life of your steam generator and prevent the release of scale on to your ironing, your steam generator is fitted with an orange "Boiler rinse" light that flashes on

the control panel when you need to drain the appliance - fig. 21.



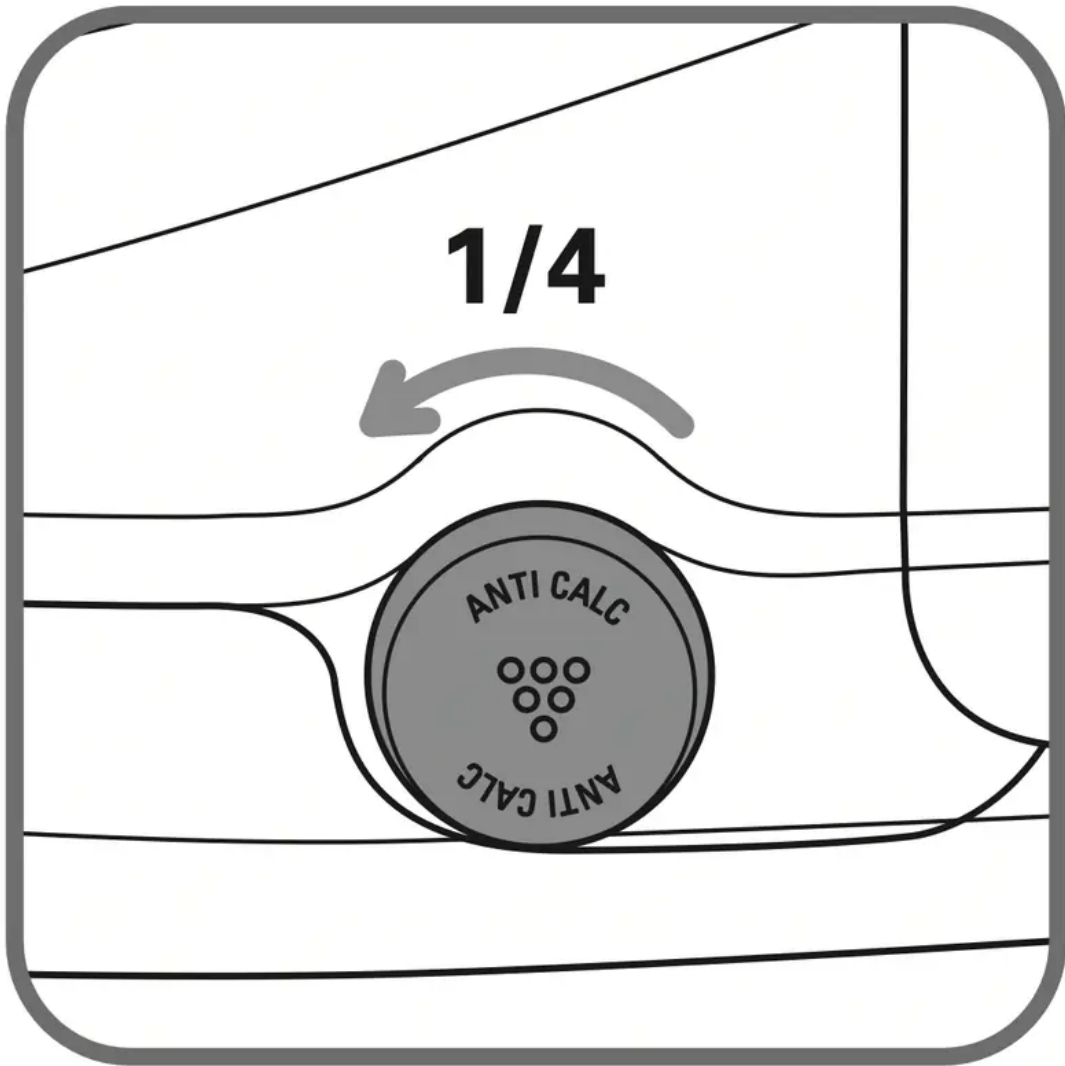
**fig.21**

- If the orange “boiler rinse” warning light flashes, you can continue ironing normally but remember to rinse the boiler before you use it again.

**IMPORTANT!** This operation must not be carried out unless the steam generator has been unplugged for at least two hours and has cooled down completely.

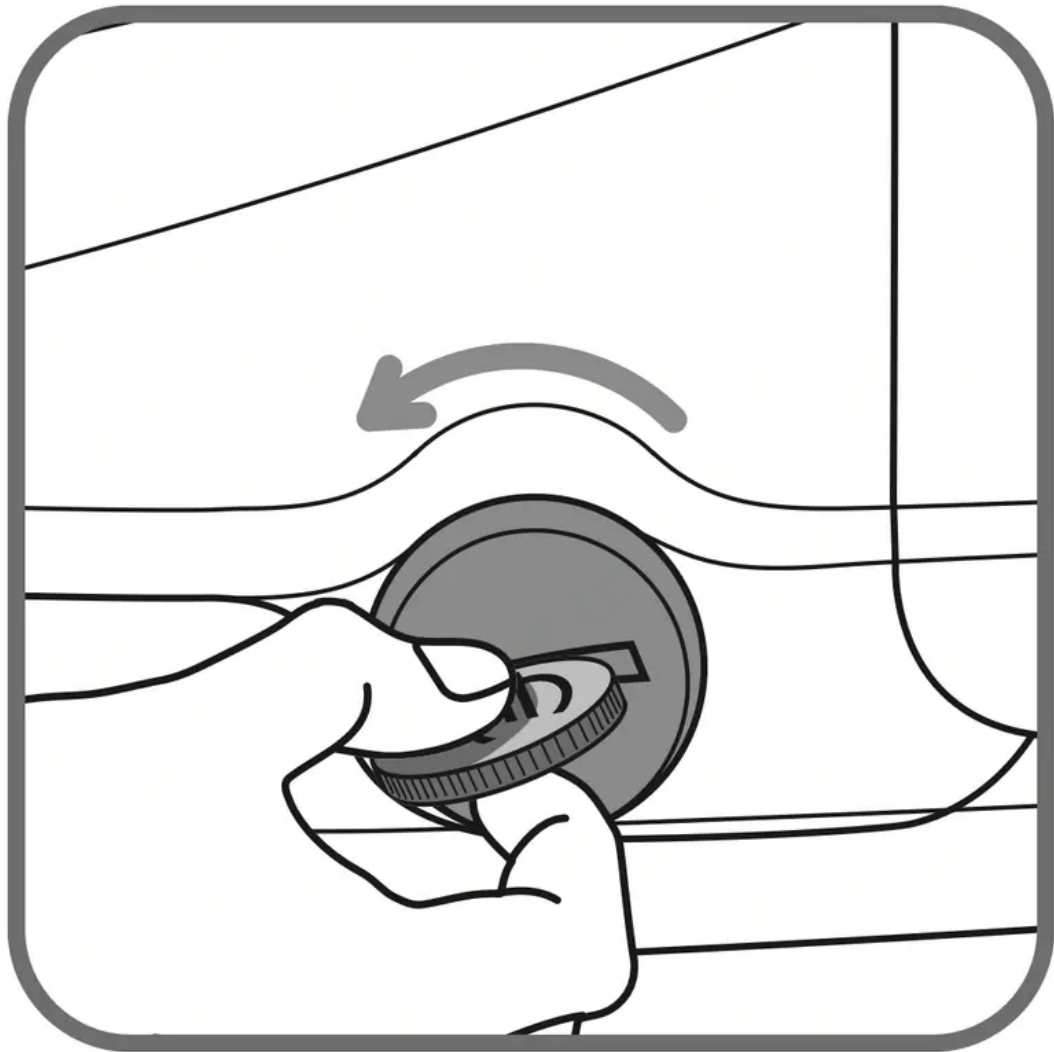
- Place the steam generator on the edge of your sink, with the iron placed to one side, standing on its heel.

- Unscrew the boiler rinse cap cover anti clockwise for a quarter of a turn - fig. 22.



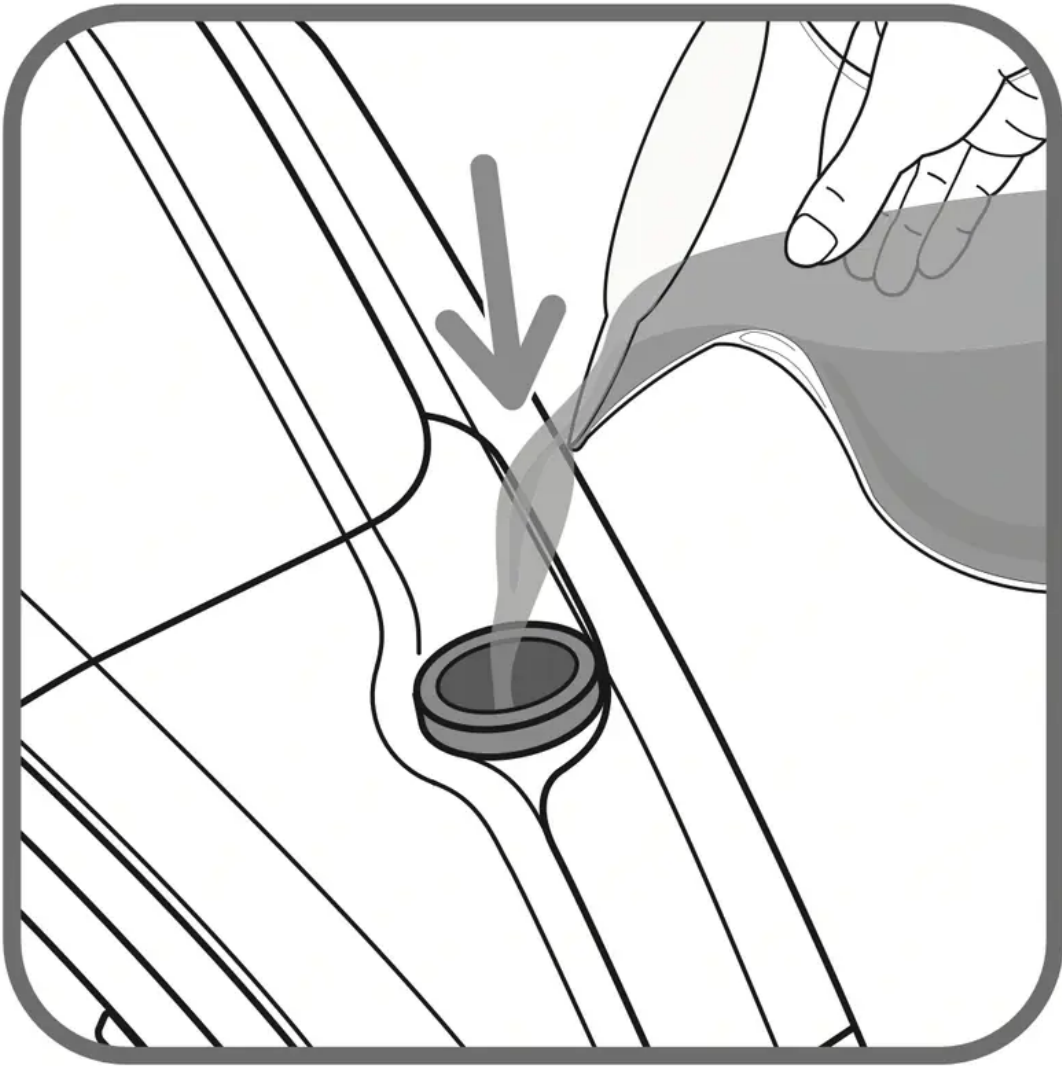
**fig.22**

- Using a coin, gently unscrew the boiler rinse cap - fig. 23.



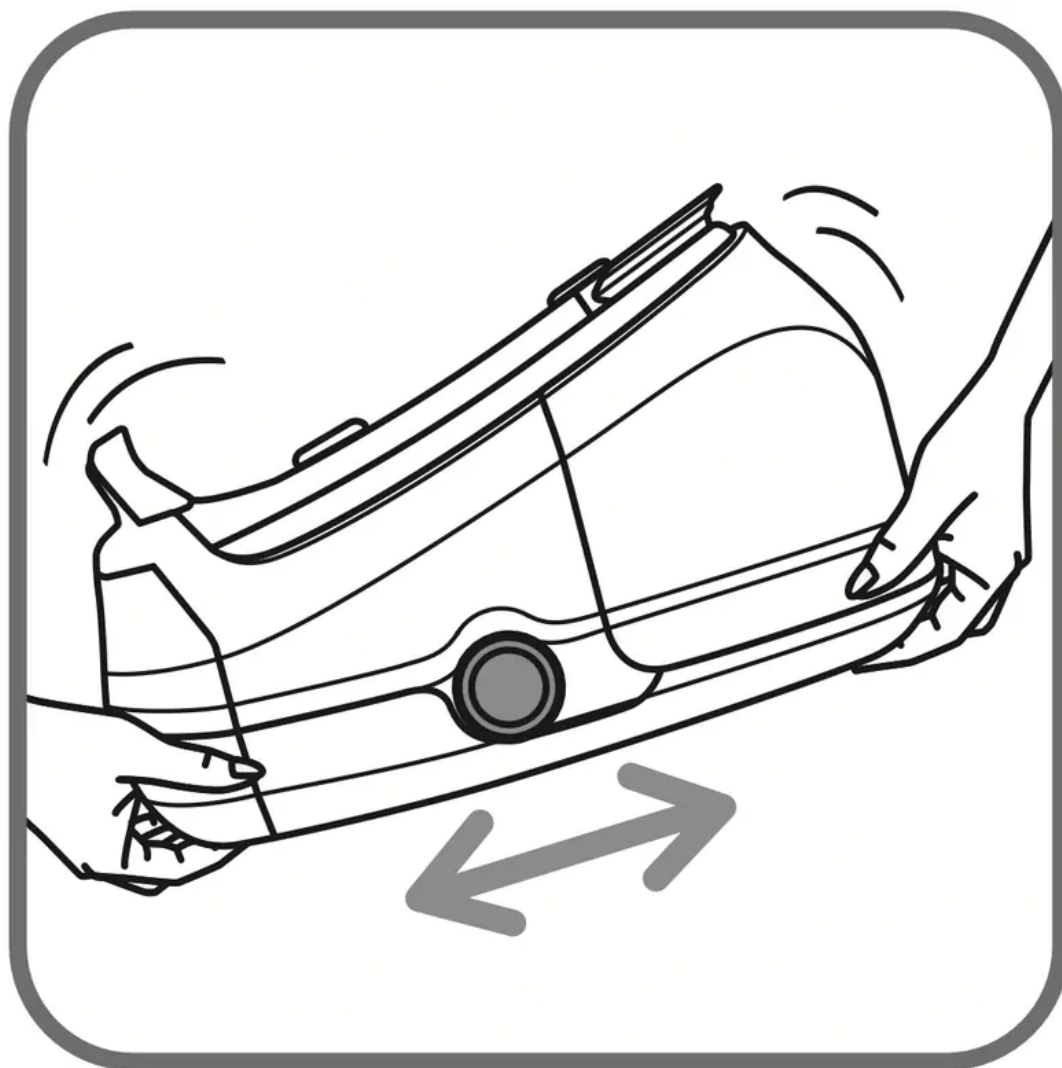
**fig.23**

- Holding the steam generator in a tilted position, and using a jug, fill the boiler with  $\frac{1}{4}$  litre of untreated tap water - fig. 24.

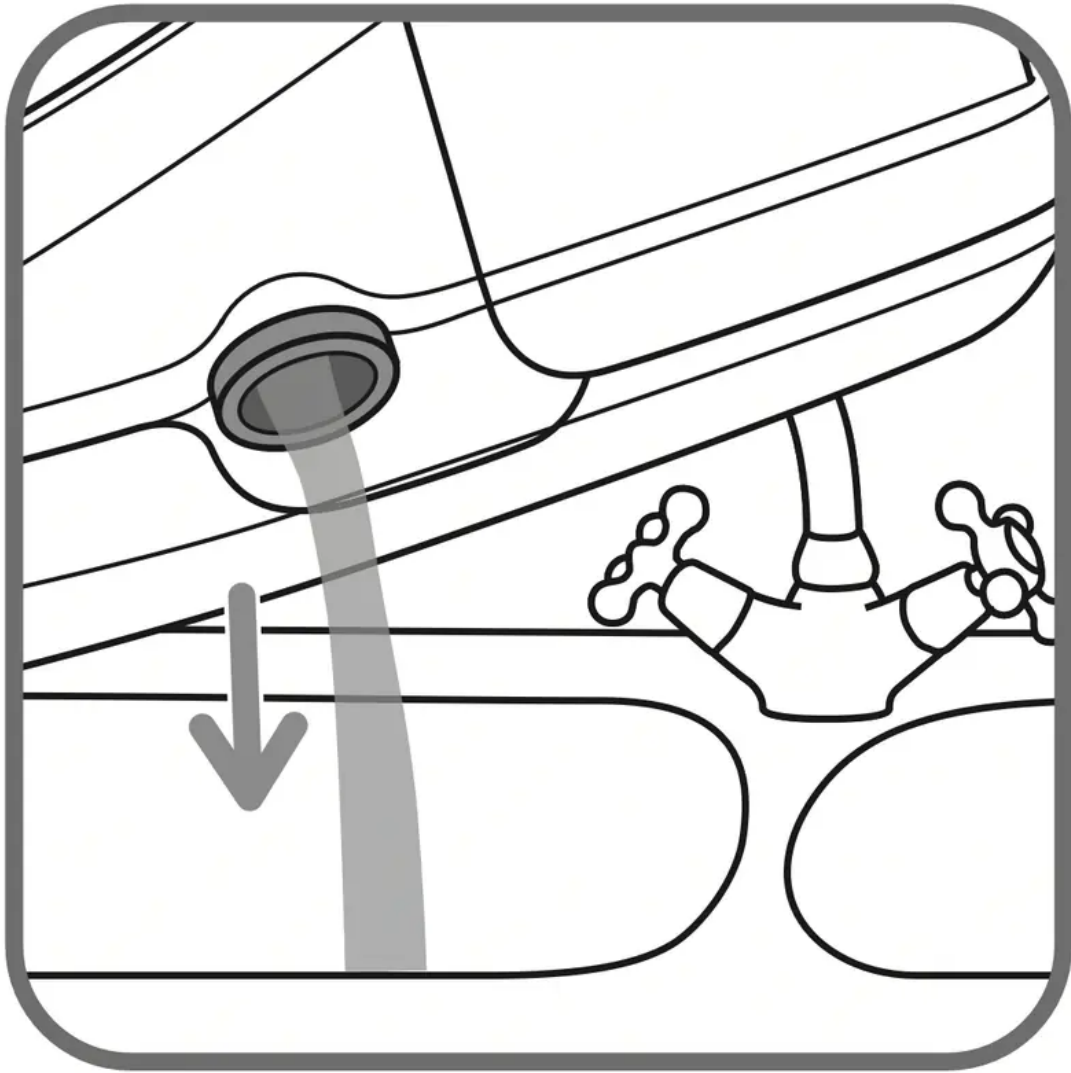


**fig.24**

- Shake the base unit for a few moments fig. 25 and then empty it completely into your sink - fig. 26.



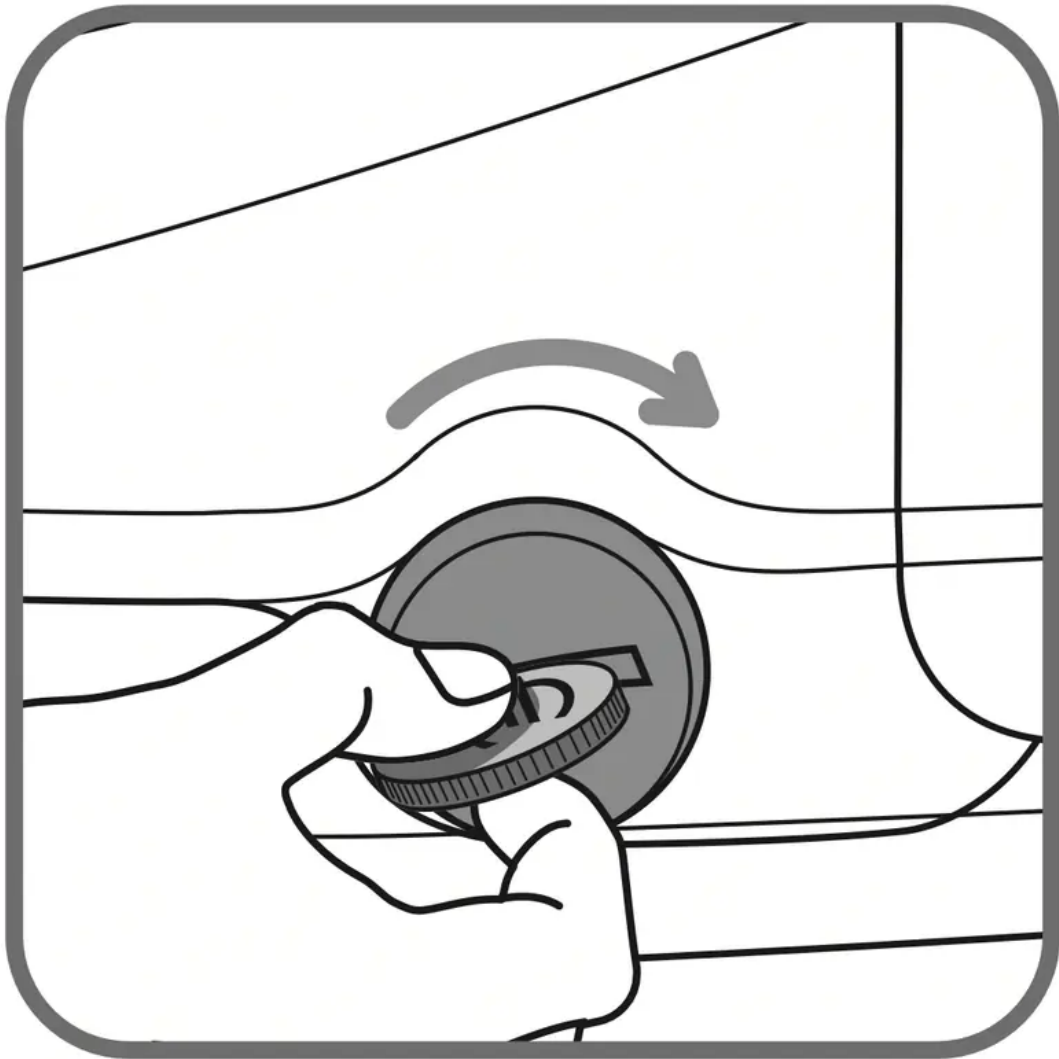
**fig.25**



**fig.26**

- To obtain the best results, we recommend that this operation is done twice.

- Screw back and tighten up the boiler rinse cap with a coin - fig. 27.



**fig.27**

- Put the boiler rinse cap cover back in place - fig. 28.

TYPE OF FABRIC	SETTING TEMPERATURE
<b>SYNTHETICS</b> (Polyester, Acetate, Acrylic, Polyamide)	• ☁ 
<b>SILK / WOOL</b>	•• ☁ 
<b>COTTON / LINEN</b>	••• ☁ 

The next time you use the generator press the “restart” button to turn off the orange light.

The steam generator does not work without the scale collector / boiler rinse cap (according to model).

Regular descaling of your steam generator helps to maintain its steam performance over time



# TROUBLESHOOTING



<b>Problems</b>	<b>Possible Causes</b>	<b>Solutions</b>
The steam generator does not switch on or the iron indicator and ON/OFF indicator do not switch on.	The appliance is not switched on.	Check that your appliance is correctly plugged in and press the illuminated on/off switch.
Water runs through the holes in the sole plate.	You use steam too frequently when your iron is not hot enough.	Wait for the thermostat light to go out before activating the steam button.
		Adjust the frequency of use of the steam trigger to match the position of the thermostat (see § 6).
	Water has condensed in the pipes because you are using steam for the first time or you have not used it for some time.	Press on the steam control button away from your ironing board until the iron produces steam.
Water streaks appear on the linen.	When taking a break from ironing, if your ironing board cover is soaked with water it is not suited to the power of a steam generator.	Check that your ironing board is suitable. A mesh type ironing board must be used to avoid condensation.

<p>White streaks come through the holes in the sole plate.</p>	<p>Your boiler has a build-up of scale because it has not been rinsed out regularly.</p>	<p>Depending on model:</p> <ul style="list-style-type: none"> <li>• Rinse the collector when the “Calc-Away System” indicator flashes.</li> <li>• Rinse the boiler when the “Boiler rinse” light flashes.</li> </ul> <p>If your water is very hard, rinse it more often.</p>
<p>Brown streaks come through the holes in the sole plate and stain the linen.</p>	<p>You are using chemical descaling agents or additives in the water for ironing.</p>	<p>Never add this type of product to the water tank(see § 2). Contact an Approved Service Centre.</p>
<p>The sole plate is dirty or brown and may stain the linen.</p>	<p>You are ironing at too high a temperature.</p>	<p>See our recommendations regarding temperature control setting.</p>
	<p>Your linen is not rinsed sufficiently or you have ironed a new garment before washing it.</p>	<p>Ensure linen is rinsed thoroughly to remove any soap deposits or chemicals on new garments which may be sucked up by the iron.</p>
	<p>You are using starch.</p>	<p>Always spray starch on the reverse side of the fabric to be ironed.</p>
<p>There is no steam or there is little steam.</p>	<p>The water tank is empty (red light flashing).</p>	<p>Fill the water tank and press the “Restart” button on the control panel.</p>
	<p>The sole plate temperature is set to the maximum.</p>	<p>The generator is working but steam is very hot and dry. As a result, it is less visible.</p>

	The water tank is not correctly fitted into its housing.	Push it into position until it "clicks" into place.
Steam comes out from around the collector cover/boiler rinse cap (according to model).	The collector/cap (according to model) is not tight enough.	Tighten the collector/cap after having let the appliance cool for 2 hours.
	The seal of the collector/cap (according to model) is damaged.	Contact an Approved Service Centre.
	The generator is faulty.	Stop using the generator and contact an Approved Service Centre.
The red "water tank empty" light flashes.	You did not press the "Restart" button.	Press the "Restart" button on the control panel until the indicator goes out.
Steam or water escapes under the appliance.	The generator is faulty.	Stop using the generator and contact an Approved Service Centre.
The orange "Calc-Away System" or "Boiler rinse" (according to the model) light is flashing.	You did not press the "Restart" button.	Press the "Restart" button on the control panel until the indicator goes out.

### Warning

This content is compiled from multiple sources and is provided for reference purposes only. It may not be complete or fully applicable to all situations. If you are unable to resolve your issue, please contact the product manufacturer or an authorized service provider for official support.