

## User manual Air Purifiers

### PRODUCT FEATURES



1. Stylish and portable design
2. 3M-HEPA filters for premium filtration performance
3. 3 fan speed setting for different scenarios
4. Quiet sleep mode and LED night light function
5. Touch button for easy operation
6. Built-in filter replacement reminder
7. Security power adapter with 6ft long cord. Safe and convenient

### FULL-EFFECT PURIFICATION FUNCTION

For dusts, mites, pollen, smoke, fiber, animal dandruff, etc.

This purifier can effectively remove PM2.5 (smoke, dusts, pollen, etc.) from room air; it can purify the air by removing formaldehyde, VOC and other harmful gaseous pollutants to create a fresh space.



### MAJOR FUNCTIONS

Initial filter: intercepting large pollutants including hair, fiber, large particles, dandruff, etc.

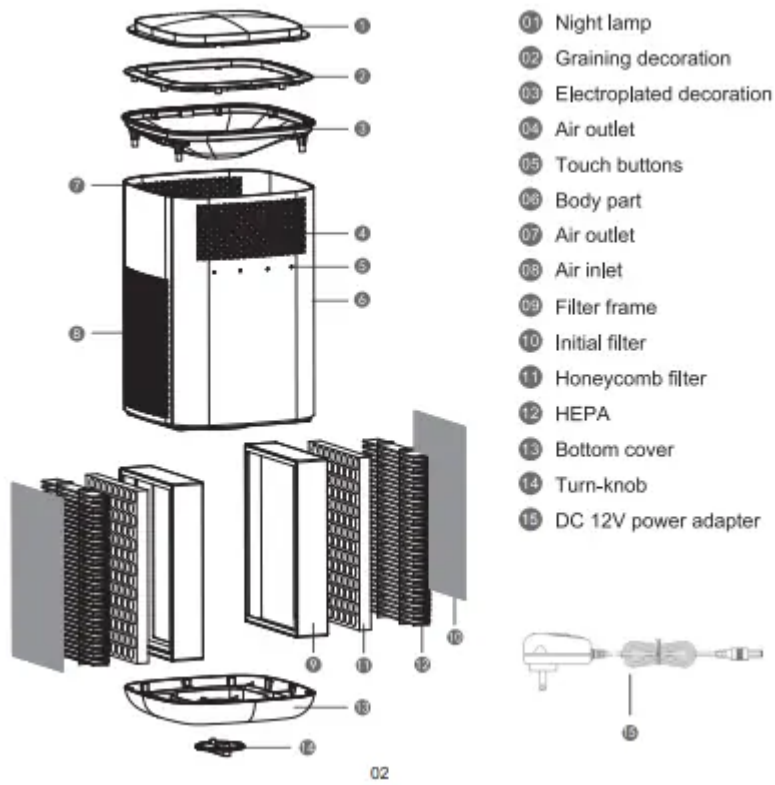
HEPA filter: it can remove PM2.5, smoke, willow, dandruff, pollen and other pollutants. Filtering bacteria such as Staphylococcus alba.

Activated carbon net: it can effectively remove harmful gaseous pollutants such as formaldehyde, VOC and others.

### Package content

- 1 x VALKIA Air Purifier
- 1 x User Manual

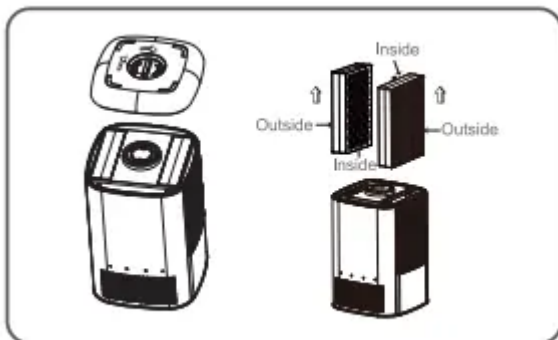
# PRODUCT DIAGRAM



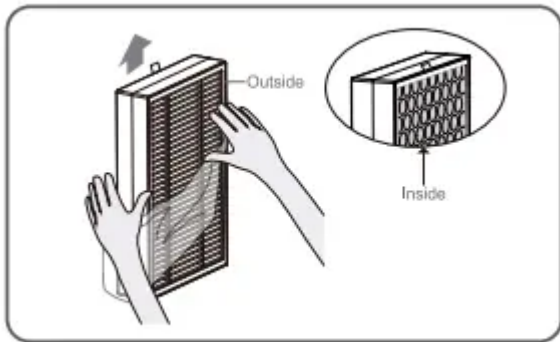
## HOW TO USE

I. Remove the packaging film of filters

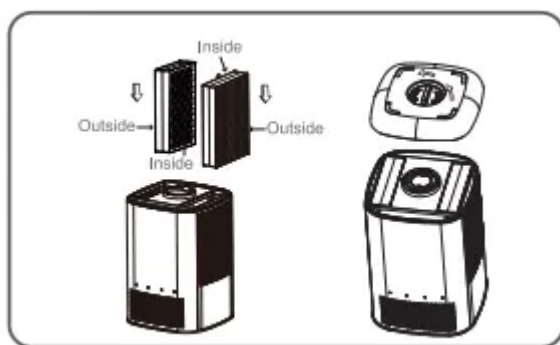
1. Spin the turn-knob to take off the bottom cover and pull out two filters.



2. Remove the packaging film of new filters.



3. Replace the old ones and remount the bottom cover.



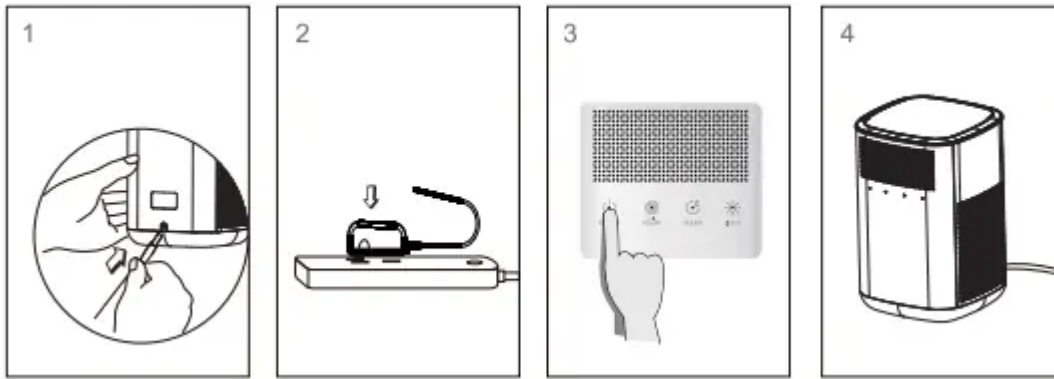
2. Connect to power supply

### CAUTIONS FOR OPERATION

- Make sure the purifier is connected to the adapter (DC 12V) and plugged to an adequate socket.
- Make sure the plug is tightly connected to the socket.
- Do not use the product in case of a damaged plug, a damaged socket, damaged body part or malfunctioning product.
- Do not touch the cord with wet hands.

### CAUTIONS FOR CLEANING

1. First, plug the output end of the adapter to the port on the back of the product.
2. Plug the other side to an adequate socket. The purifier should enter under stand-by mode.
3. Gently press the ON/OFF button to turn on the purifier.
4. The purifier should work properly.



## USAGE SCENARIO



Desk



Study



Hotel



Baby's room

## FUNTION DESCRIPTION



ON/OFF



RAPID  
CLEAN



SLEEP



LIGHT

### [ON/OFF button]

1. The indicator will be on after connecting to the DC 12V adapter. Under stand-by mode, the red indicate keeps on.
2. Under stand-by mode, touch ON/OFF button to start operation. The purifier lights a white indicator when working and the default working mode is low-speed mode.
3. Press the ON/OFF button (delay 100ms) under working mode to enter stand-by mode, with the red indicator being on.

### [Rapid clean]

In the working mode, press the speed button to switch to high wind speed, the white indicator lights up and the fan runs at the highest speed.

### [Sleep button]

1. When the product is powered on, press the sleep button to light up the indicator of the sleep mode. The fan runs at a low speed. At the same time, all indicator lights are off,

including power switch, speed button and night light button; all buttons may not work except the sleep button. Button functions will restore until the product wakes up from sleep mode.

2. In the sleep mode, long press the sleep button for more than 5 seconds to turn on the night light, press and hold again for 5 seconds to turn off the night light.

### **[Light button]**

Under working mode, press [Light button] to power on and off the night light. On and off of the white indicator represent state of the night light.

### **[Filter Lifespan Instructions]**

1. Reset the filter lifespan: When the filter lifespan reaches 95% of the limited value, four buttons will flash white indicator lights at the same time. The lights flash 2 times per second. When the filter lifespan reaches 100% of the limited value, the indicator lights of four buttons will turn white and stay on; Long press [power switch] for more than 5 seconds, four white lights turn on one after another, and each light flashes once every 1 second for three times. The reset is completed. When the filter lifespan does not reach its limit, long pressing the power switch to reset is not available.
2. The filter lifespan is up to 1500 hours (running 1 hour at high wind speed is counted as 0.5 hour; running 1 hour at medium wind speed is counted as 1 hour; running 1.5 hours at low wind speed is counted as 1 hour); when the working hour of filter is more than 950 hours, the indicator light of negative ion button will turn red and flash twice per second until the filter lifespan is reset. If the filter lifespan is not cleared after it reaches 1500 hours, the indicator lights of four buttons will stay lit until the filter lifespan is cleared and reset.
3. Force reset the filter lifespan, long press the speed button for more than 10 seconds after the product is powered on within 30 seconds, and force reset filter lifespan.

## **TROUBLE SHOOTING**

If a problem occurs, please try the following solutions before calling our customer service team.

### **The [Replace Filter] indicator keeps flashing.**

- It is reminding you to replace your filter. The indicator will keep flashing unless it is replaced. After replacing the filter, press on [ON/OFF] for 5 seconds to reset the purifier and quench the indicator.

### **No wind comes out of the air outlet.**

- The adapter is not connected to the purifier. Please plug the adapter to it.

### **Air quality does not change even though the purifier has run for a long time.**

- Make sure the filter is mounted correctly.

- Make sure the bottom cover is aligned to the marker line.
- The air is too humid to be purified.
- The air inlet or outlet is obstructed.
- The area is larger than 10m<sup>3</sup>. Its applicable area is 8.4m<sup>3</sup>.

#### **Too much noise.**

- Make sure the packaging film of the filter is dismantled. Check if the filter is dirty and decide whether to replace it.

#### **Dusts in the air cause stains that are hard to remove.**

- Check if the filter is dirty and replace it.

#### **The purified air smells.**

- Make sure the product is not used in a space filled with strong smells for a long time, weeks or months (for example, cigarettes, barbecues and other strong smells).

## **MAINTENANCE**

### **PRECAUTIONS FOR MAINTENANCE**

1. Make sure to unplug the adapter and disconnect it from power supply before maintenance.
2. Wipe the product and operation panel with a dry, soft cloth.
3. Please use only neutral detergent. Do not use abrasive powder, alkaline detergent, bleach, alcohol or gasoline to clean the product.
4. Do not use a hard cloth to wipe the product. Or it will cause damages to the surface.
5. Do not use a wet cloth to wipe its cord. Or residual water may cause electric shock.

### **CAUTIONS FOR CLEANING**

1. The filter shall not be washed with water,
2. It is recommended to change the filter in time after reaching its service life;
3. Please wipe the body part with a wet, soft cloth.
4. Do not use water or corrosive detergent to clean the body part;
5. Use a small, soft brush to clean the upper air outlet;
6. After cleaning, restore its components and connect it to the power supply for a normal use.

### **REPLACING THE FILTER**

1. Gently press on the [ON/OFF button] until the indicator quenches to power off the product. Then open the turn-knob to take off the bottom cover and pull out two filters.

2. Remove the packaging film of new filters.
3. Replace the old ones and remount the bottom cover.
4. Press on [Replace Filter button] for more than 5 seconds, until the red indicator blinks 6 times (twice per second) to complete the reset process.

**Warning**

This content is compiled from multiple sources and is provided for reference purposes only. It may not be complete or fully applicable to all situations. If you are unable to resolve your issue, please contact the product manufacturer or an authorized service provider for official support.