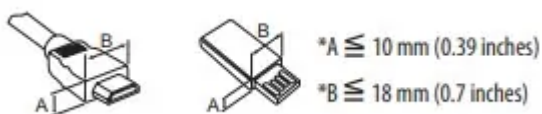


Preparing

- When the TV is turned on for the first time after being shipped from the factory, initialization of the TV may take approximately one minute.
- Image shown may differ from your TV.
- Your TV's OSD (On Screen Display) may differ slightly from that shown in this manual.
- The available menus and options may differ from the input source or product model that you are using.
- New features may be added to this TV in the future.
- The device must be easily accessed to a location outlet near the access. Some devices are not made by turning on /off button, turning off the device and unplugging the power cord
- The items supplied with your product may vary depending upon the model.
- Product specifications or contents of this manual maybe changed without prior notice due to upgrade of product functions.
- Foran optimal connection, HDMI cables and USB devices should have bezels less than 10 mm (0.39 inches) thick and 18 mm (0.7 inches) width.
- Use an extension cable that supports USB 2.0 if the USB cable or USB flash drive does not fit into your TV's USB port.
- Use a certified cable with the HDMI logo attached. If you do not use a certified HDMI cable, the screen may not display or a connection error may occur
- Recommended HDMI cable types (3 m (9.84 feet) or less)
 - Ultra High-Speed HDMI cable®/TM

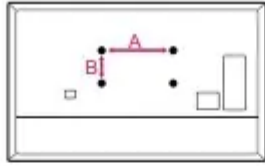


Optional Extras

- Optional extras can be changed or modified for quality improvement without any notification. Contact your dealer for buying these items. These devices work only with certain model
- The model name or design may be changed due to the manufacturer's circumstances or policies.

Wall Mounting Bracket (Depending upon model)

Make sure to use screws and wall mount bracket that meet the VESA standard. Standard dimensions for the wall mount kits are described in the following table.



Model	43UM69* 43UM71* 43/50UM73* 50UM74* 50UM76*	49/55UM69* 49/55UM71* 55UM72* 49/55UM73* 55UM74* 55UM76*
VESA (A x B) (mm)	200 x 200	300 x 300
Standard screw	M6	M6
Number of screws	4	4
Wall mount bracket (optional)	LSW240B MSW240	OLW480B MSW240

Model	60/65UM69* 60/65UM71* 60UM72* 65UM73* 65UM74* 65UM76*	70/75UM69* 70/75UM71* 70UM73* 75/82/86UM75* 75/82/86UM80*
VESA (A x B) (mm)	300 x 300	600 x 400
Standard screw	M6	M8
Number of screws	4	4
Wall mount bracket (optional)	OLW480B	LSW640B

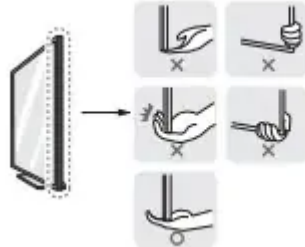
Lifting and moving the TV

When moving or lifting the TV, read the following to prevent the TV from being scratched or damaged and for safe transportation regardless of its type and size.

- It is recommended to move the TV in the box or packing material that the TV originally came in
- Before moving or lifting the TV, disconnect the power cord and cables.
- When holding the TV, the screen should face away from you to avoid damage.



- Hold the top and bottom of the TV frame firmly. Make sure not to hold the transparent part, speaker, or speaker grill area



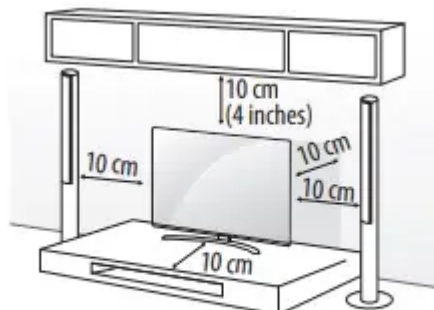
- Use at least two people to move a large TV.
- When transporting the TV by hand, hold the TV as shown in the following illustration.



- When transporting the TV, do not expose the TV to jolts or excessive vibration
- When transporting the TV, keep the TV upright; never turn the TV on its side or tilt towards the left or right.
- When handling the TV, be careful not to damage the protruding buttons.

Mounting on the Table

1. Lift and tilt the TV into its upright position on a table. Leave a minimum of 10 cm (4 inches) space from the wall for proper ventilation



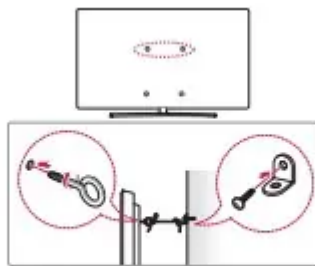
(Depending upon model)

2. Connect the power cord to a wall outlet.

Warning

- Do not apply foreign substances (ols. lubricants etc.) to the stew parts when assembling the product. (Ooing so may damage the product)
- If you install the TV on a stand. you need to take actions to prevent the product from overturning. Otherwise. the product may fill over. which may cause injury.
- Do not use any unapproved items to ensure the safety and product life span.
- Any damage or injuries caused by using unapproved items are not covered by the warranty.
- Make sue that the screws are fastened tightly. (iFthey are not fastened securely enough the TV may tit forward after being installed)
- Do not fasten the screws with excessive force otherwise they may strip and become loose.

Securing TV to the Wall



(Depending upon model)

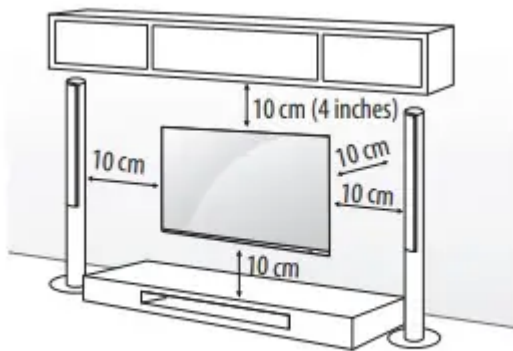
1. Insert and tighten the eye-bolts. or TV brackets and bolts on the back of the TV. If there are bolts inserted at the eye-bolts position. remove the bolts first
 2. Mount the wall brackets with the bolts to the wall. Match the location of the wall bracket and the eye-bolts on the rear of the TV.
 3. Connect the eye-bolts and wall brackets tightly with a sturdy rope. Make sure to keep the rope horizontal with the flat surface.
- Use a platform or cabinet that's strong and large enough to support the TV securely.
 - Brackets bolts and ropes are not provided. You can obtain additional accessories from your local dealer.

Mounting to the Wall

- An optional wall mount can be used with your LG Television. Consult with your local dealer for a wall mount that supports the VESA standard used by your TV model. Carefully attach the wall mount bracket to the rear of the TV. Install the wall mount bracket on a solid wall perpendicular to the plane of the TV in the building material. please

contact qualified personnel to install the wall mount. Detailed instructions will be included with the wall mount.

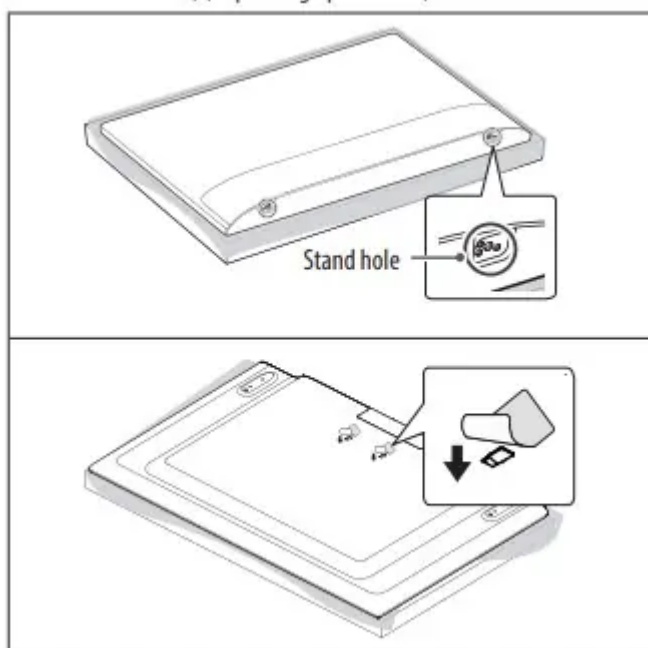
- We recommend that you use an LG brand wall mount. The LG wall mounts easy to adjust orto connect the cables. When you do not use LG's wall mount bracket. usea wall mount bracket where the device is adequately secured to the wall with enough space to allow connectivity to external devices. If you are using a non-adjustable mount. attach the mount tothe wal. Attach the cables to the TV fist. then attach the TV to the mount.



(Depending upon model)

Warning

- Remove the stand before installing the TV on a wall mount by performing the stand attachment in reverse.
- For more information of screws and wall mount bracket. refer tothe Separate purchase
- If you intend to mount the product to a wall. attach VESA standard mounting interface (optional parts) to the back of the product. When you install the set to use the wall mounting bracket (optional parts). fix it carefully so as not to drop.
- When mounting aTV onthe wall. make sue not to install theTV by hanging the power and signal cables onthe backof theTV.
- Do not install this product ona wall fit could be exposed to oil oil mist .This may damage the product and cause it to fall
- When installing the wall mounting bracket, it is recommended to cover the stand hole using tape, in order to prevent the influx of dust and insects, (Depending upon model).



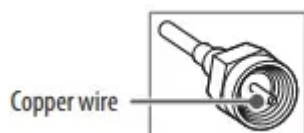
Connections

You can connect various external devices to the TV. For more information on external device's connection, refer to the manual provided with each device.

Antenna/Cable

Connect an antenna, cable, or cable box to watch TV while referring to the following. The illustrations may differ from the actual items and an RF cable is optional.

- Make sure not to bend the copper wire of the RF cable



- Complete all connections between devices, and then connect the power cord to the power outlet to prevent damage to your TV.
- Use a signal splitter to use 2 TVs or more.
- DTV Audio Supported Codec: MPEG, Dolby Digital
- This TV cannot receive ULTRA HD (3840x2160 pixels) broadcasts directly because the related standards have not been confirmed.

Other connections

Connect your TV to external devices. For the best picture and audio quality, connect the external device and the TV with the HDMI cable.

HDMI

- When connecting the HDMI cable, the product and external devices should be turned off and unplugged.
- HDMI Audio Supported Format: (Depending upon model)
 - DTS(44.1kHz /48kHz /88.2kHz /96kHz),
 - DTS HD (44.1kHz /48kHz /88.2kHz /96kHz /176.4kHz /192 kHz),
 - True HD (48kHz),
 - Dolby Digital / Dolby DigitalPlus (32kHz /44.1kHz /48kHz), PCM (32kHz / 44.1kHz /48kHz /96kHz /192kHz)

External Devices

Supported external device are: Blu-ray player. HD receivers. DVD players. VCR. audio systems. USB storage devices. PC. gaming device. and other external devices. For more information on external device's connection, refer to the manual provided with each device.

- If you record aTV program on aBlu-ay/DVD recorder or VCR. make sure to connect theTV signal input cable to the TV through a DVD recorder orVCR. For more information about recording. refer to the manval provided withthe connected device.
- The external device connections shown may differ slightly from illustrationsin a manual
- Connect external devices tothe TV regardless about the order of theTV port.
- If you connect a gaming device to the TV. use the cable supplied with the gaming device.
- Refer tothe external equipments manual for operating instructions.
- In PC mode. there may be noise associated with the resolution. vertical patter. contrast or brightness. nose i present. change the PC output to another resolution. change the refresh rate to anather rate or adjust the brightness and contrast on the [PICTURE] menu until the picture is clear. Depending upon the graphics card. some resolution settings may not allow the image to be positioned onthe screen properly.
- Some USB Hubs may not work. fa USB device connected through a USB Hub isnot detected. connectit directly to the USB port on theTV.
- When connecting via a wired LAN. it isrecommended to usea CAT 7 cable.
- The TV may be capable of operating without aset-top-box from a multichannel video programming distributor (MVPD).

Using Button

You can simply operate theTV functions,using the button.



Basic functions

	Power On (Press) Power Off ¹ (Press and Hold) Menu Control (Press ²) Menu Selection (Press and Hold ³)
--	--

1. All running apps will close.
2. You can access and adjust the menu by pressing the button when TV is on.
3. You can use the function when you access menu control.

Adjusting the menu

When the TV is turned on, press the button one time. You can adjust the Menu items using the button.

	Turns the power off.
	Changes the input source.
	Adjusts the volume level.
	Scrolls through the saved channels.

Troubleshooting

Can not control the TV with the remote control.

- Check if anything such as tape has been placed over the receiver.
- Check if there is any obstacle between the product and the remote control.
- Replace the batteries with new fresh ones

No image display and no sound is produced.

- Check if the products turned on
- Check if the power cord is connected to a wall outlet.
- Check if there is a problem in the wall outlet by connecting other products

The TV turns off suddenly.

- Check the power control settings. The power supply may be interrupted.
- Check if the auto-off function is activated in the settings menu.
- If there is no signal while the TV is on, the TV will turn off automatically after 15 minutes of inactivity.

Abnormal Display

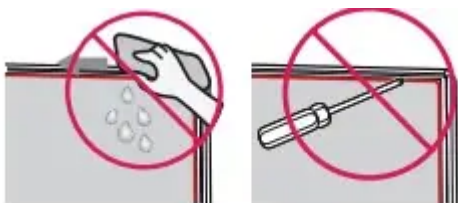
- If the TV feels cold to the touch there may be a small flicker when it is turned on. This is normal; there is nothing wrong with the TV. Some minute dot defects may be visible on the screen, appearing as tiny red, green, or blue spots. However, they have no adverse effect on the TV performance. Avoid touching the LCD screen or holding your fingers against it for long periods of time. Doing so may produce some temporary distortion effects on the screen.
- This panel is an advanced product that contains millions of pixels. In a very few cases, you could see fine dots on the screen while you are viewing the TV. Those dots are deactivated pixels and do not affect the performance and reliability of the TV.
- Displaying a still image for a prolonged period of time may cause an image sticking. Avoid displaying a fixed image on the TV screen for an extended length of time.

Generated Sound

- **Cracking noise** A cracking noise that occurs when watching or turning off the TV is generated by plastic thermal contraction due to temperature and humidity. This noise is common for products where thermal deformation is required.
- **Electrical circuit humming/panel buzzing** A low level noise is generated from a high-speed switching circuit, which supplies a large amount of current to operate a product. It varies depending upon the product. This generated sound does not affect the performance and reliability of the product.

Warning

- When cleaning the product, be careful not to allow any liquid or foreign objects to enter the gap between the upper, left or right side of the panel and the guide panel, (Depending upon model).



- Make sure to wring any excess water or cleaner from the cloth.
- Do not spray water or cleaner directly onto the TV screen.

- Make sure to spray just enough of water or cleaner onto a dry cloth to wipe the screen.

Specifications

- Product specifications may be changed without prior notice due to upgrade of product functions.
- Estimated yearly energy consumption indicated on the FTC label is measured in accordance with the Test Procedures for Television Sets (USA only).
- The actual energy consumption depends on the usage environment (The content watched TV setting, etc).

(Depending upon country)

Broadcasting Specifications	
Television system	ATSC / NTSC-M, 64 & 256 QAM
Program coverage (Band)	VHF 2-13, UHF 14-69, DTV 2-69, CATV 1-135, CADTV 1-135
External antenna impedance	75 Ω

(Except for 43/49/55/60/65UM69*)

Wireless module (LGSBWAC92) Specifications	
Wireless LAN (IEEE 802.11a/b/g/n/ac)	
Frequency Range	Output Power (Max.)
2400 to 2483.5 MHz	18 dBm
5150 to 5725 MHz	18 dBm
5725 to 5850 MHz	18 dBm
Bluetooth	
Frequency Range	Output Power (Max.)
2400 to 2483.5 MHz	8 dBm
<p>As band channels can vary per country, the user cannot change or adjust the operating frequency. This product is configured for the regional frequency table.</p> <p>For consideration of the user, this device should be installed and operated with a minimum distance of 20 cm (7.8 inches) between the device and the body.</p> <p>FCC ID: BEJLGSBWAC92 IC: 2703H-LGSBWAC92</p>	

(Only 43/49/55/60/65UM69*)

Wireless module (LGSWFAC81) Specifications	
Wireless LAN (IEEE 802.11a/b/g/n/ac)	
Frequency Range	Output Power (Max.)
2400 to 2483.5 MHz	20 dBm
5150 to 5725 MHz	15 dBm
5725 to 5850 MHz	14.5 dBm

As band channels can vary per country, the user cannot change or adjust the operating frequency. This product is configured for the regional frequency table.
For consideration of the user, this device should be installed and operated with a minimum distance of 20 cm (7.8 inches) between the device and the body.
FCC ID: BEJLGSWFAC81
IC: 2703H-LGSWFAC81

Environment condition	
Operating Temperature	0 °C to 40 °C (32 °F to 104 °F)
Operating Humidity	Less than 80 %
Storage Temperature	-20 °C to 60 °C (-4 °F to 140 °F)
Storage Humidity	Less than 85 %

Warning

This content is compiled from multiple sources and is provided for reference purposes only. It may not be complete or fully applicable to all situations. If you are unable to resolve your issue, please contact the product manufacturer or an authorized service provider for official support.

