

Before Using the Product

Cleaning

1. Power off the product and computer.
2. Disconnect the power cord from the product.
3. Wipe the monitor with a clean, soft and dry cloth.
4. Do not apply a cleaning agent that contains alcohol, solvent, or surfactant to the monitor.
5. Do not spray water or detergent directly on the product.
6. Wet a soft and dry cloth in water and wring thoroughly to clean the exterior of the product.
7. Connect the power cord to the product when cleaning is finished.
8. Power on the product and computer.

Installation

► Warning

- DO NOT PLACE CANDLES, INSECT REPELLANTS OR CIGARETTES ON TOP OF THE PRODUCT. DO NOT
- INSTALL THE PRODUCT NEAR HEAT SOURCES.
- Do not install the product in poorly ventilated spaces such as a bookcase or closet.
- Install the product at least 10cm away from the wall to allow ventilation.
- Keep the plastic packaging out of the reach of children.
- Children may suffocate.
- Do not install the product on an unstable or vibrating surface (insecure shelf, sloped surface, etc.)
- The product may fall and become damaged and/or cause an injury.
- Using the product in an area with excess vibration may damage the product or cause a fire.
- Do not install the product in a vehicle or a place exposed to dust, moisture (water drips, etc.), oil, or smoke.
- Do not expose the product to direct sunlight, heat, or a hot object such as a stove.
- The product lifespan may be reduced or a fire may result.
- Do not install the product within the reach of young children.

- The product may fall and injure children.
- Edible oil (such as soybean oil) may damage or distort the product. Keep the product away from oil pollution. And do not install or use the product in the kitchen or near the kitchen stove.

► **Caution**

- Do not drop the product while moving.
- Do not set down the product on its front.
- When installing the product on a cabinet or shelf, make sure that the bottom edge of the front of the product is not protruding.
 - The product may fall and become damaged and/or cause an injury.
 - Install the product only on cabinets or shelves of the right size.
- Set down the product gently.
 - Product failure or personal injury may result.
- Installing the product in an unusual place (a place exposed to a lot of fine dust, chemical substances, extreme temperatures or a significant presence of moisture, or a place where the product will operate continuously for an extended period of time) may seriously affect its performance.
 - Be sure to consult Samsung Customer Service Center if you want to install the product at such a place.

Operation

► **Warning**

- There is a high voltage inside the product. Never disassemble, repair or modify the product yourself.
 - Contact Samsung Customer Service Center for repairs.
- To move the product, first disconnect all the cables from it, including the power cable.
- If the product generates abnormal sounds, a burning smell or smoke, disconnect the power cord immediately and contact Samsung Customer Service Center.
- Do not let children hang from the product or climb on top of it.
 - Children may become injured or seriously harmed.
- If the product is dropped or the outer case is damaged, turn off the power and disconnect the power cord. Then contact Samsung Customer Service Center.
 - Continued use can result in a fire or electric shock.
- Do not leave heavy objects or items that children like (toys, sweets, etc.) on top of the product.

- The product or heavy objects may fall as children try to reach for the toys or sweets resulting in a serious injury.
- During a lightning or thunderstorm, power off the product and remove the power cable.
- Do not drop objects on the product or apply impact.
- Do not move the product by pulling the power cord or any cable.
- If a gas leakage is found, do not touch the product or power plug. Also, ventilate the area immediately.
- Do not lift or move the product by pulling the power cord or any cable.
- Do not use or keep combustible spray or an inflammable substance near the product.
- Ensure the vents are not blocked by tablecloths or curtains.

- An increased internal temperature may cause a fire.

- Do not insert metallic objects (chopsticks, coins, hairpins, etc) or objects that burn easily (paper, matches, etc) into the product (via the vent or input/output ports, etc).
 - Be sure to power off the product and disconnect the power cord when water or other foreign substances have entered the product. Then contact Samsung Customer Service Center.
- Do not place objects containing liquid (vases, pots, bottles, etc) or metallic objects on top of the product.
 - Be sure to power off the product and disconnect the power cord when water or other foreign substances have entered the product. Then contact Samsung Customer Service Center.

► Caution

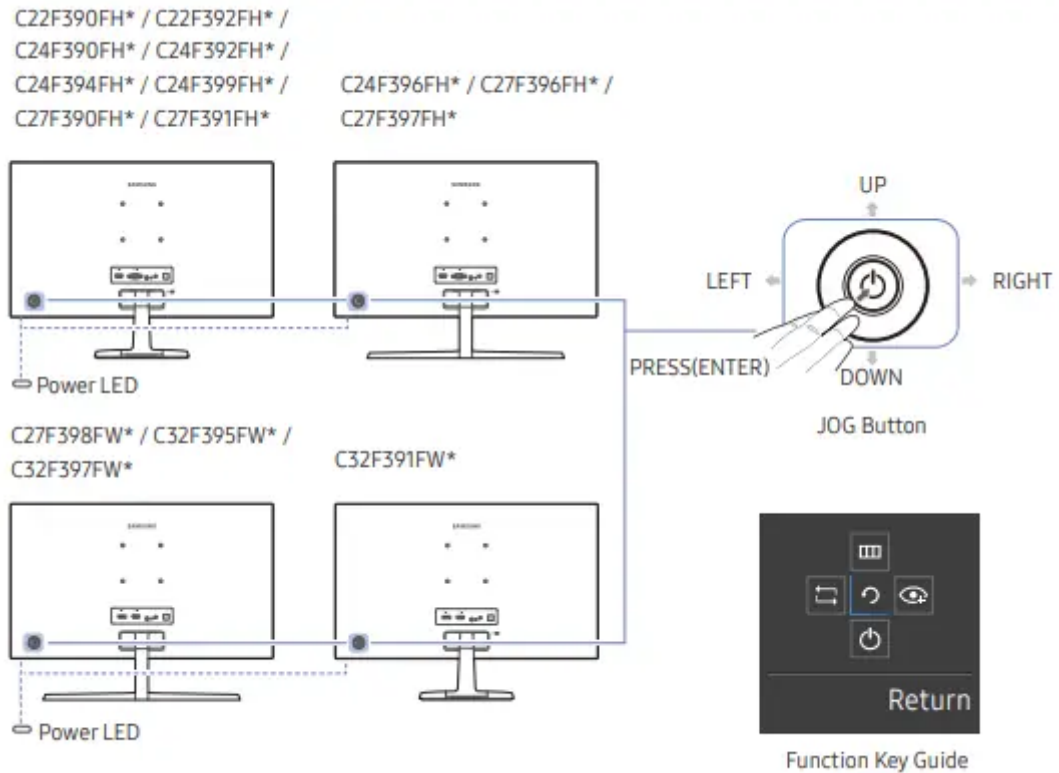
- Leaving the screen fixed on a stationary image for an extended period of time may cause afterimage burn-in or defective pixels.
 - Activate power-saving mode or a moving-picture screen saver if you will not be using the product for an extended period of time.
- Disconnect the power cord from the power socket if you do not plan on using the product for an extended period of time (vacation, etc).
 - Dust accumulation combined with heat can cause a fire, electric shock or electric leakage.
- Use the product at the recommended resolution and frequency.
 - Your eyesight may deteriorate.
- Do not put AC/DC adapters together.
- Remove the plastic bag from the AC/DC adapter before you use it.

- Do not let water enter the AC/DC adapter device or get the device wet.
 - An electric shock or fire may result.
 - Avoid using the product outdoors where it can be exposed to rain or snow.
 - Be careful not to get the AC/DC adapter wet when you wash the floor.
- Do not put the AC/DC adapter near to any heating apparatus.
 - Otherwise, a fire may result.
- Keep the AC/DC adapter in a well-ventilated area.
- If you place the AC/DC power adapter so that it is hanging with the cord input facing upwards, water or other foreign substances could enter the Adapter and cause the Adapter to malfunction.
 - Make sure to rest the AC/DC power adapter flat on a table or the floor.
- Do not hold the product upside-down or move it by holding the stand.
 - The product may fall and become damaged or cause an injury.
- Looking at the screen too close for an extended period of time can deteriorate your eyesight.
- Do not use humidifiers or stoves around the product.
- Rest your eyes for more than 5 minutes for every 1 hour of product use
- Do not touch the screen when the product has been turned on for an extended period of time as it will become hot.
- Store small accessories out of the reach of children.
- Exercise caution when adjusting the product angle or stand height.
 - Your hand or finger may get stuck and injured.
 - Tilting the product at an excessive angle may cause the product to fall and an injury may result.
- Do not place heavy objects on the product.
 - Product failure or personal injury may result.
- When using headphones or earphones, do not turn the volume too high.
 - Having the sound too loud may damage your hearing.

Preparations

Parts

Control Panel



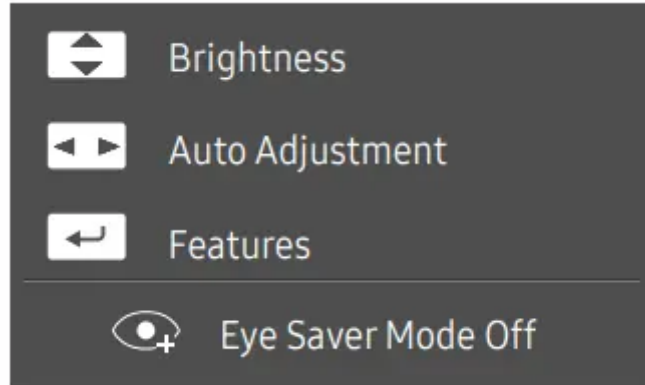
- JOG Button
 - Multi directional button that helps navigate.
- Power LED
 - This LED is power status indicator and works as
 - Power On (Power button): Off
 - Power saving mode: Blinking
 - Power Off (Power button): On
- Function Key Guide
 - Press the JOG button when the screen is turned on. The Function Key Guide will appear. To access the onscreen menu when the guide is displayed, press the corresponding direction button again.

Direct Key guide

 : On

 : Off


Analog mode



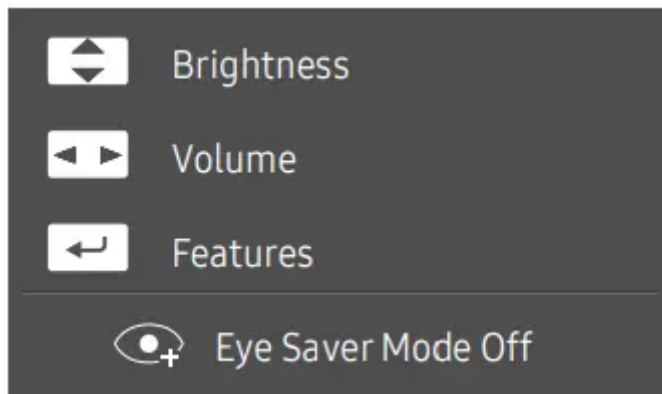
— Analog mode option

 /  : Adjust Brightness, Contrast, Sharpness.

 : Auto Adjustment


 : Display Function Key Guide.

HDMI / DisplayPort mode



— HDMI / DisplayPort mode option

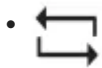
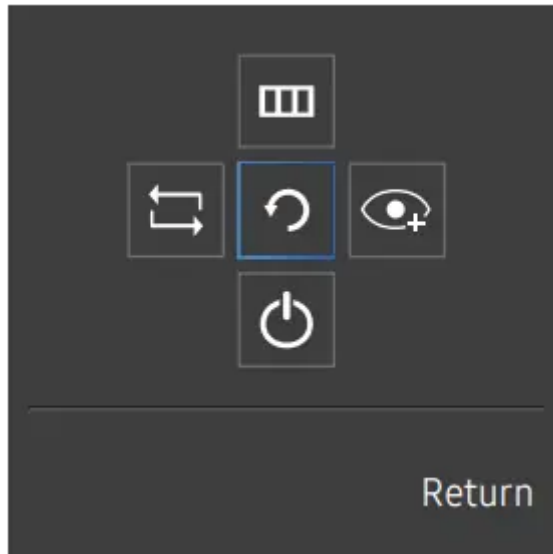
 /  : Adjust Brightness, Contrast, Sharpness.


 : Adjust Volume, Mute.

 : Display Function Key Guide.


Function Key Guide

UP/DOWN/LEFT/RIGHT: Move to the item you want. The description for each item will appear when the focus changes. PRESS(ENTER): The selected item will be applied.





- Selects  to change the input signal by moving the JOG button in the Function Key Guide screen. A message will appear on the top left corner of the screen if the input signal has been changed.



- Selects  by moving the JOG button in the function key guide screen.
- The OSD (On Screen Display) of your Monitor's feature appears.
- OSD control lock: Maintain the current settings, or lock the OSD control to prevent unintended changes to settings.
- Enable/Disable: To lock/unlock the OSD control, press the LEFT button for 10 seconds when the main menu displayed.




- Selects  by moving the JOG button in the function key guide screen.
- Press to enable or disable Eye Saver Mode.
- The items below are not available if the Eye Saver Mode function is enable.

- Picture  Bright, Brightness, Color, Game Mode

- System Eco Saving Plus



- Selects  to turn the Monitor off by moving the JOG button in the function key guide screen

When the monitor displays nothing (i.e. Power saving mode or Non-signal mode), 2 direct keys for control source and power could be used as below.

- Up
 - Source Change
- Down
 - PRESS(ENTER) for 2 seconds
 - Power Off

When the monitor displays the Main menu the JOG Button could be used as below.

- UP/DOWN
 - Move the option
- LEFT
 - Exit the Main menu.
 - Close Sublist without saving value.
 - Value decreases in the slider.
- RIGHT
 - Move to next depth.
 - Value increases in the slider.
- PRESS(ENTER)
 - Move to next depth.
 - Save the value and close Sublist.

Changing Brightness, Contrast and Sharpness settings

You can adjust Brightness, Contrast or Sharpness by moving the JOG button up or down, if no OSDmenu is displayed.



Changing the Volume setting

You can adjust Volume by moving the JOG button left or right, if no OSD menu is displayed.

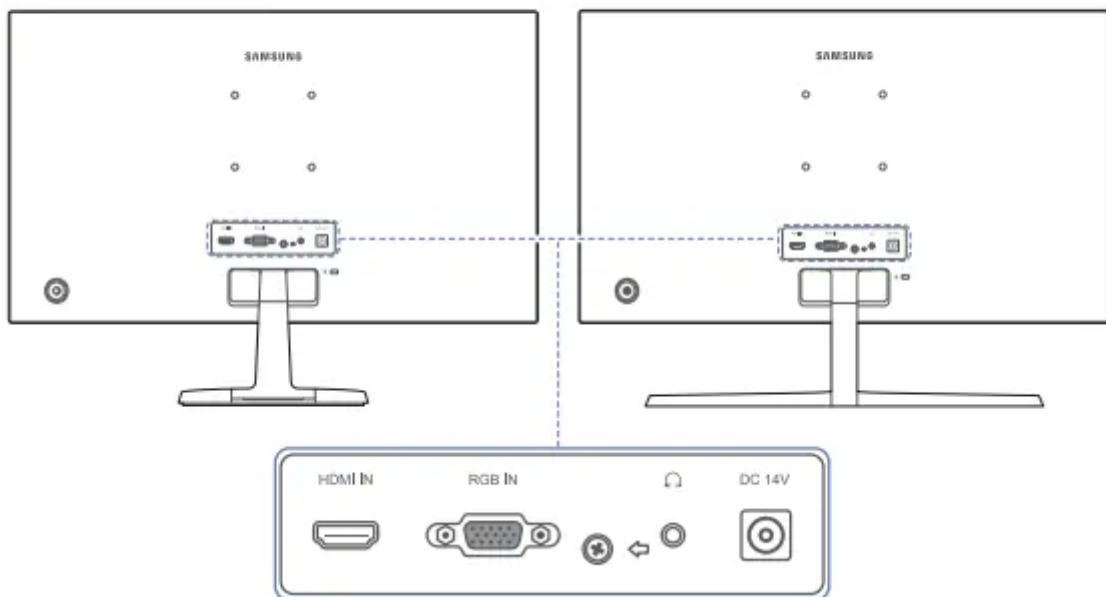


This function is only available in HDMI / DisplayPort mode

Reverse Side

C22F390FH* / C22F392FH* / C24F390FH* /
C24F392FH* / C24F394FH* / C24F399FH* /
C27F390FH* / C27F391FH*

C24F396FH* / C27F396FH* / C27F397FH*



Connects to a source device using an HDMI cable or HDMI-DVI cable.



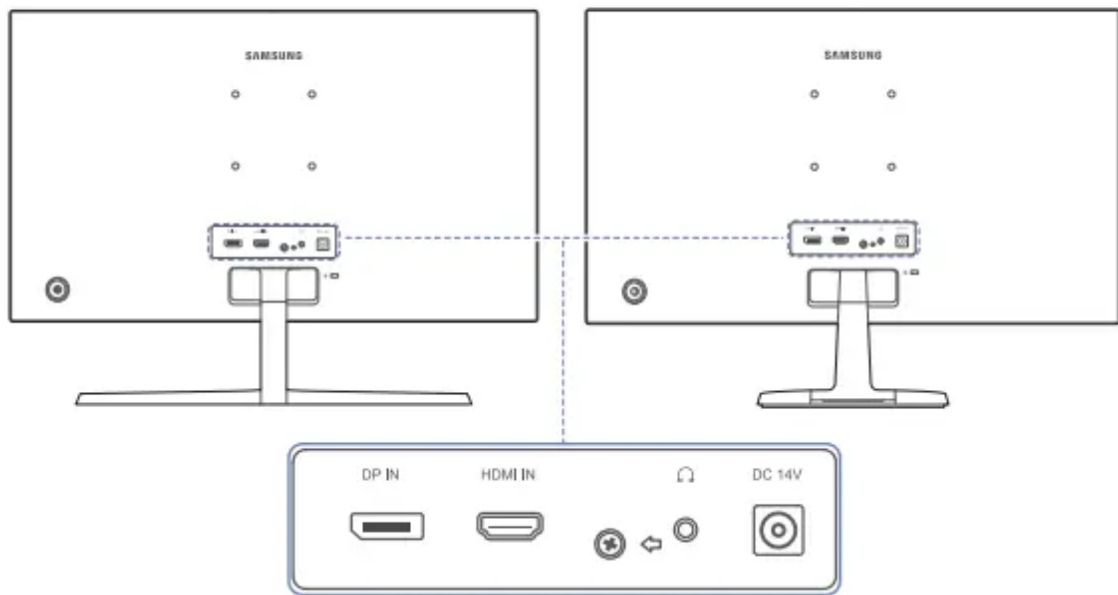
Connect to a PC using the D-SUB cable.



Connects to a PC using a DP cable.

C27F398FW* / C32F395FW* / C32F397FW*

C32F391FW*



Connect to an audio output device such as headphones.

DC 14V

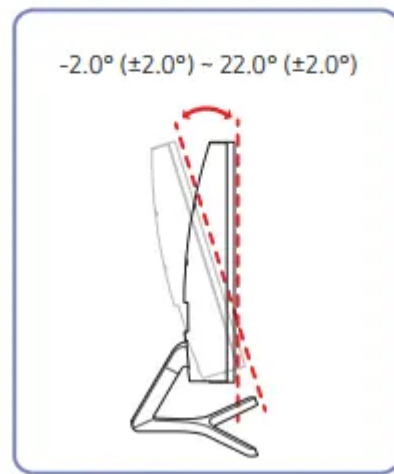
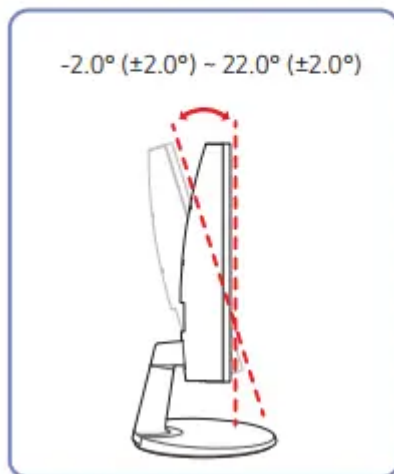


Connects to the AC/DC adapter.

Adjusting the Product Tilt

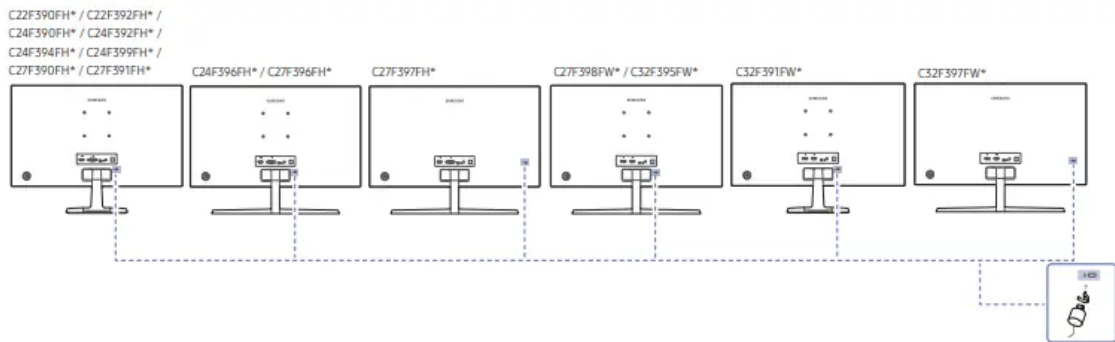
C22F390FH* / C22F392FH* / C24F390FH* /
C24F392FH* / C24F394FH* / C24F399FH* /
C27F390FH* / C27F391FH* / C32F391FW*

C24F396FH* / C27F396FH* / C27F397FH* /
C27F398FW* / C32F395FW* / C32F397FW*



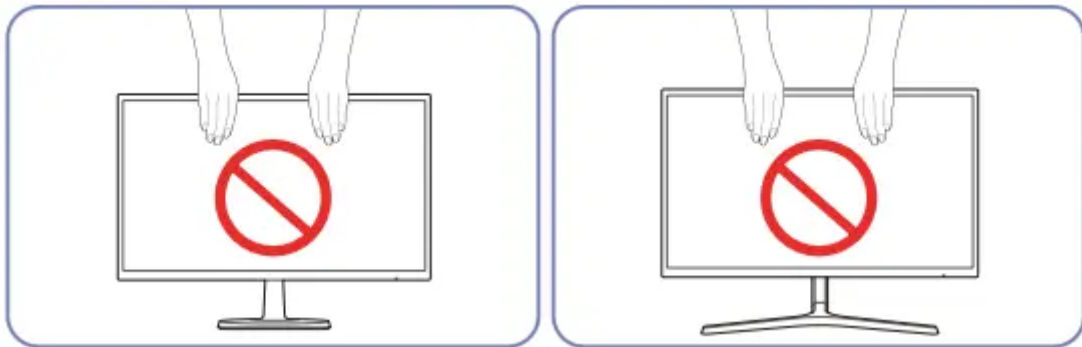
- You can adjust the product tilt.
- Hold the lower part of the product and adjust the tilt carefully

Anti-theft Lock



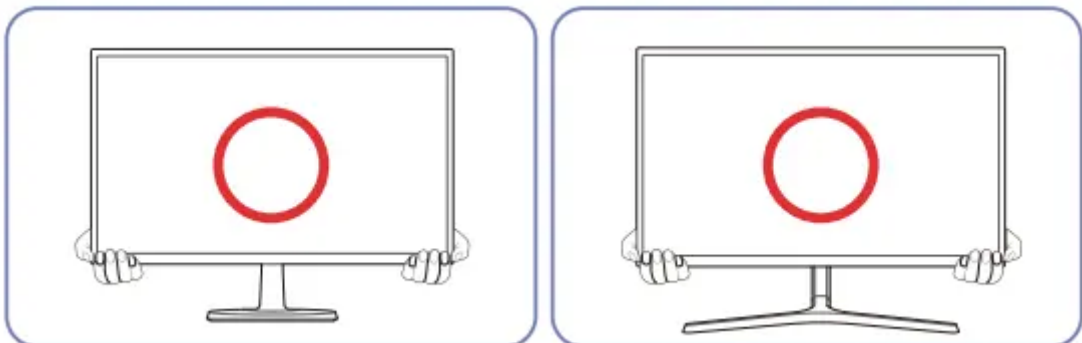
1. Fix the cable of your anti-theft locking device to a heavy object such as a desk.
2. Put one end of the cable through the loop on the other end.
3. Insert the locking device into the anti-theft lock slot at the back of the product.
4. Lock the locking device.
 - An anti-theft locking device can be purchased separately.
 - Refer to the user guide provided with your anti-theft locking device for details.
 - Anti-theft locking devices can be purchased at electronics retailers or online.

Precautions for moving the monitor



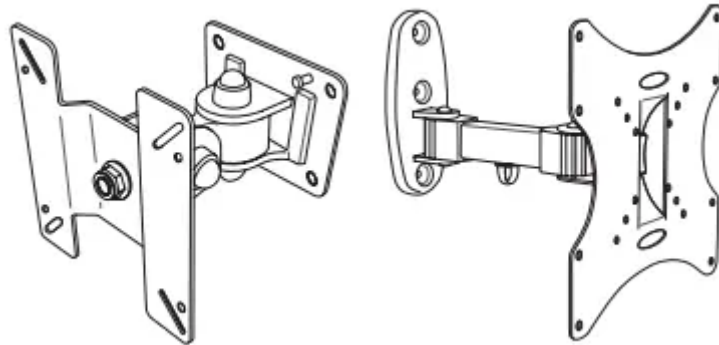
Do not directly apply pressure on the screen.

Do not hold the screen when moving the monitor.



Hold the lower part of the monitor when moving it.

Installing the Wall Mount (Not for C27F397FH* / C32F397FW* models)



- Installing the Wall Mount Kit

The wall mount kit allows you to mount the product on the wall.

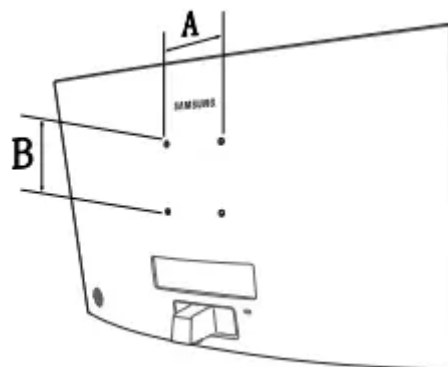
Purchase a compatible wall-mount kit to use with the product.

For detailed information on installing the wall mount, see the instructions provided with the wall mount.

We recommend you contact a technician for assistance when installing the wall mount bracket.

Samsung Electronics is not responsible for any damage to the product or injury to yourself or others if you elect to install the wall mount on your own.

Wall Mount Kit Specifications (VESA) (Not for C27F397FH* / C32F397FW* models)



- Do not use screws that are longer than the standard length or do not comply with the VESA standard screw specifications. Screws that are too long may cause damage to the inside of the product.
- For wall mounts that do not comply with the VESA standard screw specifications, the length of the screws may differ depending on the wall mount specifications.

- Do not fasten the screws too firmly. This may damage the product or cause the product to fall, leading to personal injury. Samsung is not liable for these kinds of accidents.
- Samsung is not liable for product damage or personal injury when a non-VESA or non-specified wall mount is used or the consumer fails to follow the product installation instructions.
- Do not mount the product at more than a 15 degree tilt.
- Standard dimensions for wall mount kits are shown in the table below.

Model name	VESA screw hole specs (A * B) in millimeters	Standard Screw	Quantity
CF39* SERIES (Not for C27F397FH* / C32F397FW* models)	75.0 x 75.0	M4	4

Installation

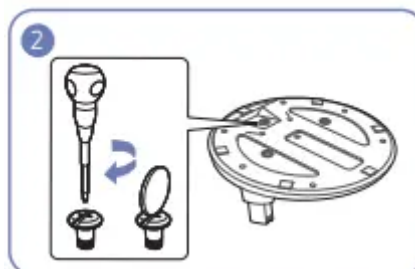
Attaching the Stand (C22F390FH* / C22F392FH* / C24F390FH* / C24F392FH* / C24F394FH* / C24F399FH* / C27F390FH* / C27F391FH* / C32F391FW*)

Insert the stand neck into the stand base in the direction shown in the figure.

Check that the stand neck is firmly connected.



Tightly fasten the connecting screw at the bottom of the stand base.

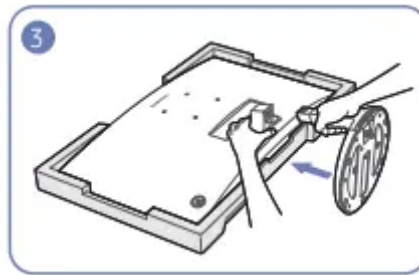


Place the protective Styrofoam (cushion) included in the package on the floor and place the product facing down on the Styrofoam, as shown in the image.

If Styrofoam is unavailable, use a thick sitting mat.

Hold the back of the monitor as shown in the figure.

Push the assembled stand into the main body in the direction of the arrow as shown in the figure.

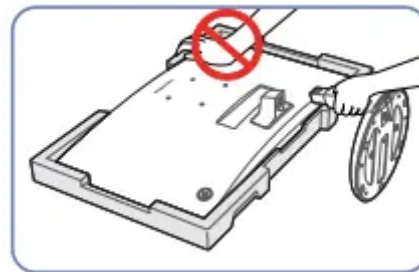


Caution



Do not hold the product upside down only by the stand

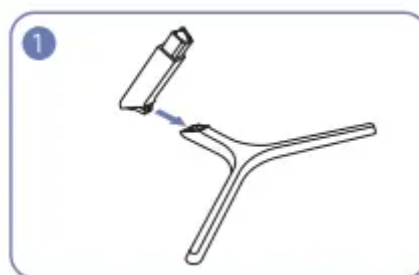
Caution



Do not press down on the monitor. There is a risk of damaging the monitor.

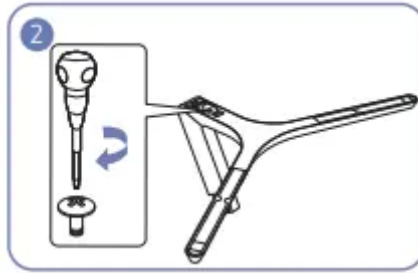
Attaching the Stand (C24F396FH* / C27F396FH* / C27F397FH* / C27F398FW* / C32F395FW* / C32F397FW*)

Insert the stand neck into the stand base in the direction shown in the figure.



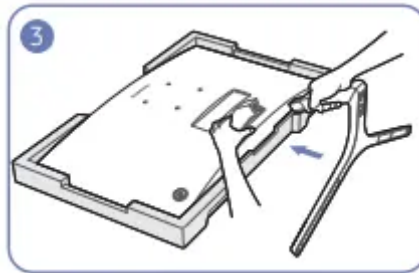
Check that the stand neck is firmly connected.

Tightly fasten the connecting screw at the bottom of the stand base.



Place the protective Styrofoam (cushion) included in the package on the floor and place the product facing down on the Styrofoam, as shown in the image.

If Styrofoam is unavailable, use a thick sitting mat. Hold the back of the monitor as shown in the figure. Push the assembled stand into the main body in the direction of the arrow as shown in the figure.



Caution



Do not hold the product upside down only by the stand.

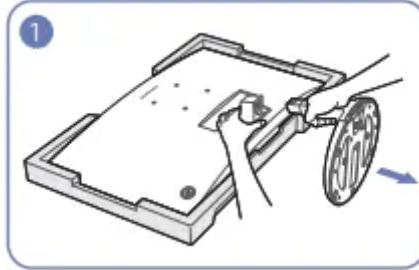
Caution



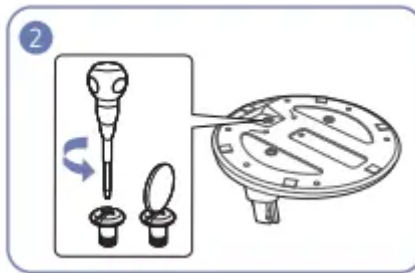
Do not press down on the monitor. There is a risk of damaging the monitor.

Removing the Stand (C22F390FH* / C22F392FH* / C24F390FH* / C24F392FH* / C24F394FH* / C24F399FH* / C27F390FH* / C27F391FH* / C32F391FW*)

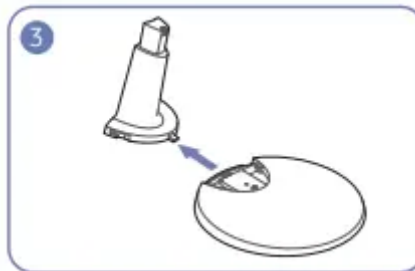
Place the protective Styrofoam (cushion) included in the package on the floor and place the product facing down on the Styrofoam, as shown in the image. If Styrofoam is unavailable, use a thick sitting mat. While holding the monitor with one hand, pull the stand neck with your other hand to detach the stand as shown in the figure.



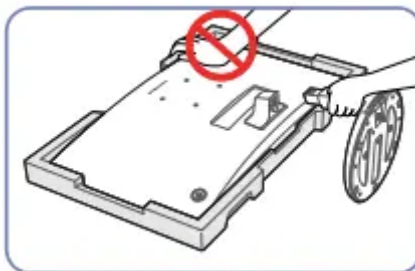
Turn the connecting screw at the bottom of the stand base to separate it.



Remove the stand neck from the stand base by pulling it in the direction of the arrow as shown in the figure.



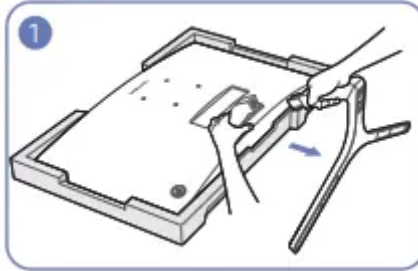
Caution



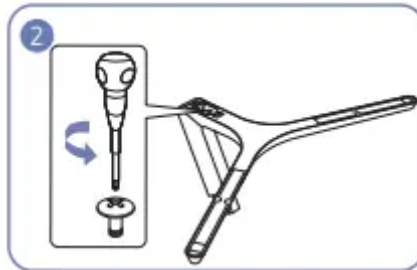
Do not press down on the monitor. There is a risk of damaging the monitor.

Removing the Stand (C24F396FH* / C27F396FH* / C27F397FH* / C27F398FW* / C32F395FW* / C32F397FW*)

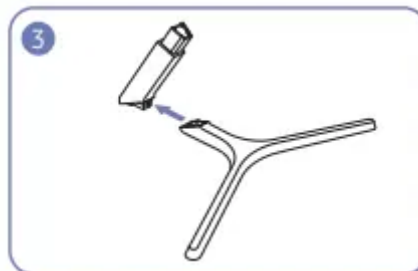
Place the protective Styrofoam (cushion) included in the package on the floor and place the product facing down on the Styrofoam, as shown in the image. If Styrofoam is unavailable, use a thick sitting mat. While holding the monitor with one hand, pull the stand neck with your other hand to detach the stand as shown in the figure.



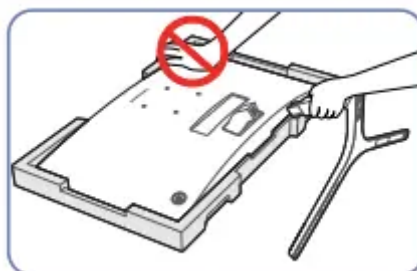
Turn the connecting screw at the bottom of the stand base to separate it.



Remove the stand neck from the stand base by pulling it in the direction of the arrow as shown in the figure.



Caution



Do not press down on the monitor. There is a risk of damaging the monitor.

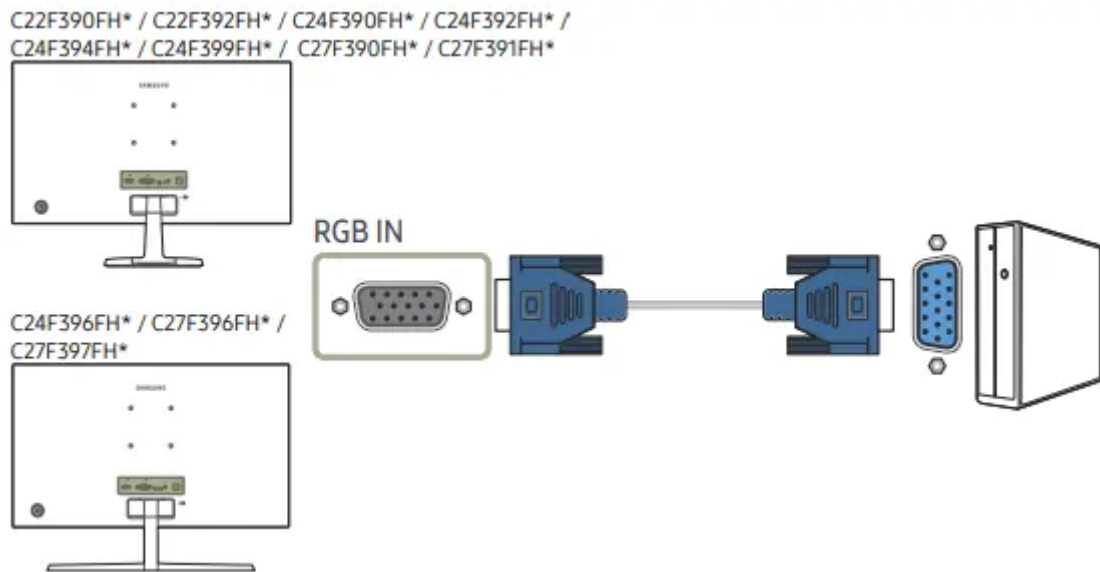
Connecting and Using a Source Device

Pre-connection Checkpoints

Connecting and Using a PC

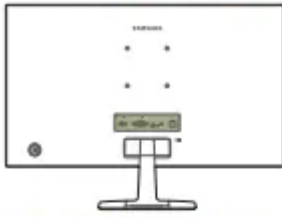
Select a connection method suitable for your PC

Connection Using the D-SUB Cable (Analog Type)

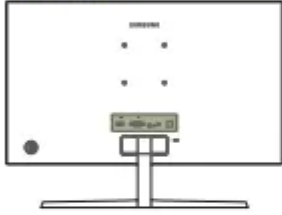


Connection Using the HDMI or HDMI-DVI Cable

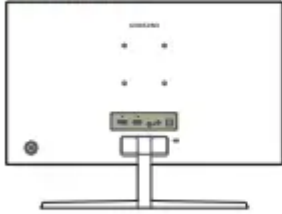
C22F390FH* / C22F392FH* / C24F390FH* / C24F392FH* /
C24F394FH* / C24F399FH* / C27F390FH* / C27F391FH*



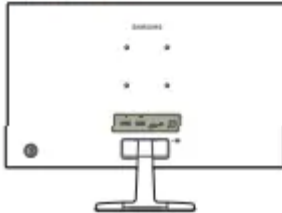
C24F396FH* / C27F396FH* /
C27F397FH*



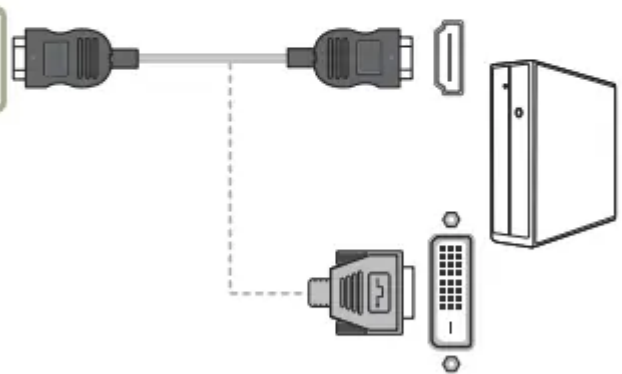
C27F398FW* / C32F395FW* /
C32F397FW*



C32F391FW*

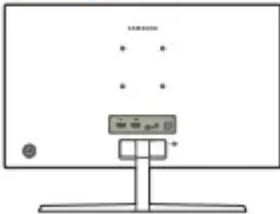


HDMI IN

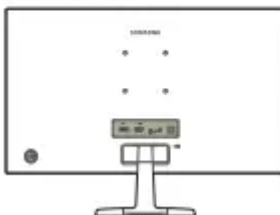


Connection Using an DP Cable

C27F398FW* / C32F395FW* /
C32F397FW*



C32F391FW*

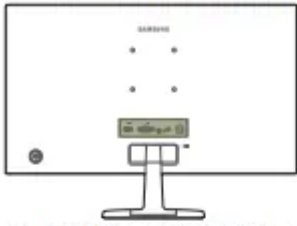


DP IN

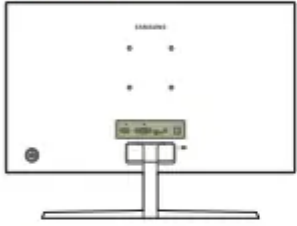


Connecting to Headphones

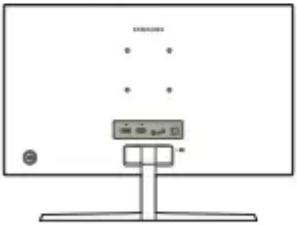
C22F390FH* / C22F392FH* / C24F390FH* / C24F392FH* /
C24F394FH* / C24F399FH* / C27F390FH* / C27F391FH*



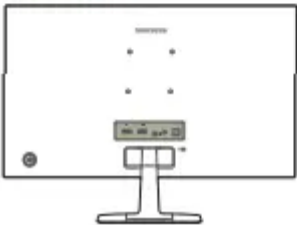
C24F396FH* / C27F396FH* /
C27F397FH*



C27F398FW* / C32F395FW* /
C32F397FW*

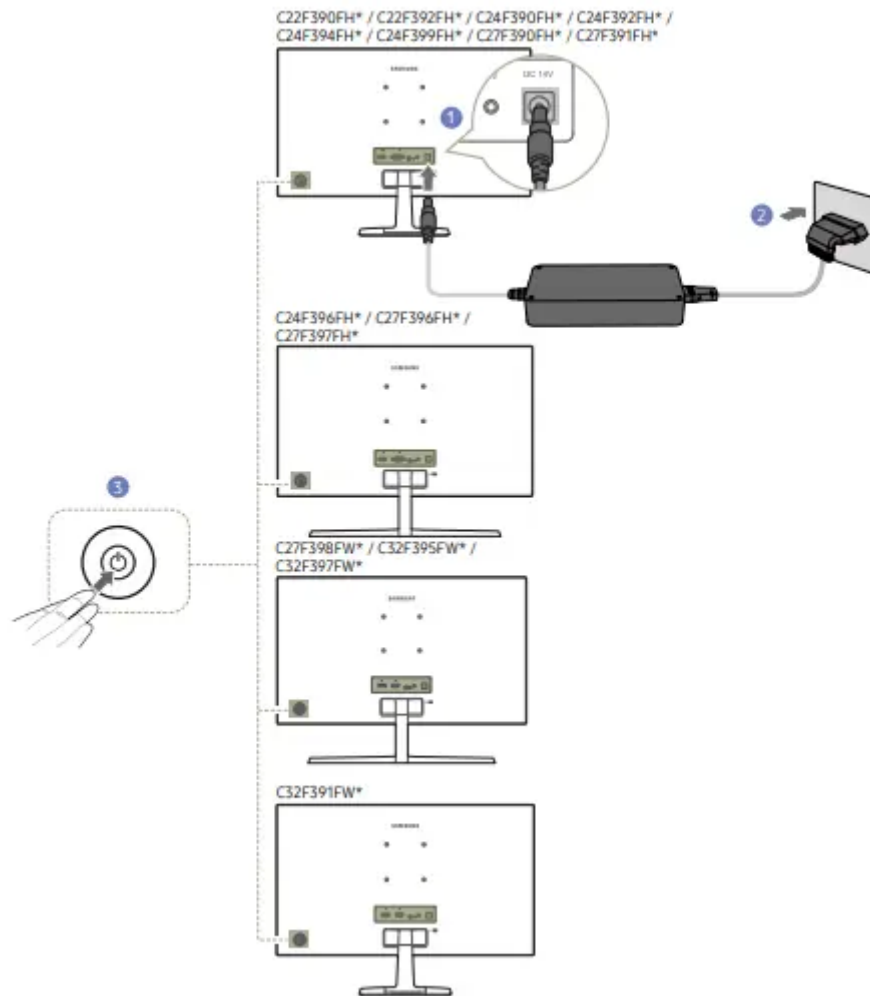


C32F391FW*



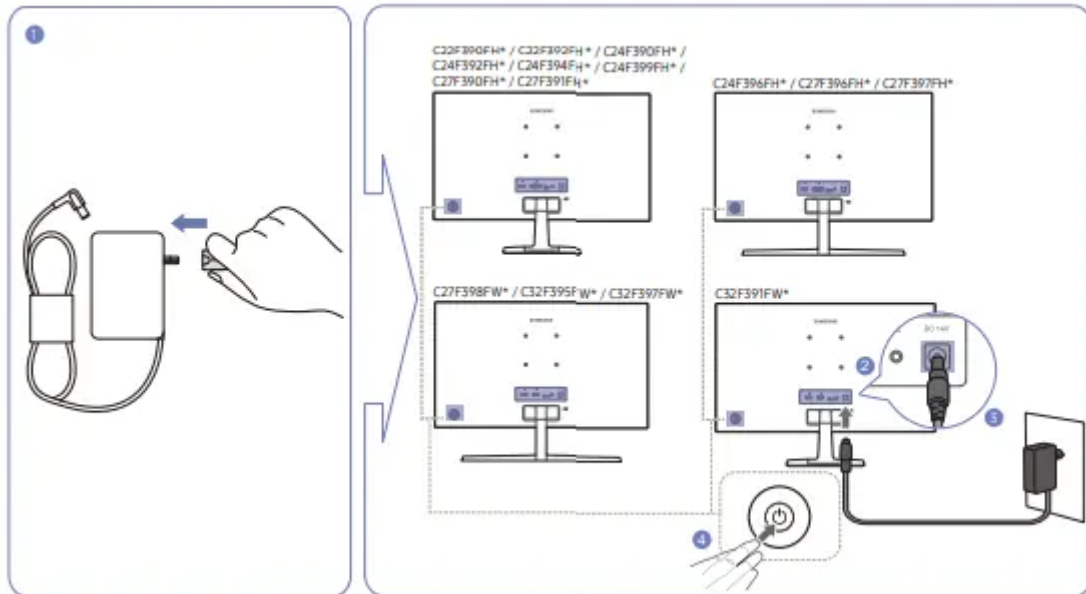
Connecting the Power

Optional



1. Connect the power cable to the AC/DC adapter. Then, connect the AC/DC adapter to the DC 14V port on the back of the product.
2. Next, connect the power cable to the power outlet.
3. Press the JOG button on the back of the monitor to turn it on.

Optional



1. Connect the power plug to the AC/DC adapter. (Optional)
2. Connect the AC/DC adapter cable to the DC 14V port on the back of the monitor.
3. Plug the AC/DC adapter into the power outlet.
4. Press the JOG button on the back of the monitor to turn it on.

Correct posture to use the product



Use the product in the correct posture as follows:

- Straighten your back.
- Adjust the angle so light does not reflect on the screen.
- Keep your forearms perpendicular to your upper arms and level with the back of your hands.
- Keep your elbows at about a right angle.
- Adjust the height of the product so you can keep your knees bent at 90 degrees or more, your heels attached to the floor, and your arms lower than your heart.

Driver Installation

Setting Optimum Resolution

An information message about setting optimum resolution will appear if you power on the product for the first time after purchase.

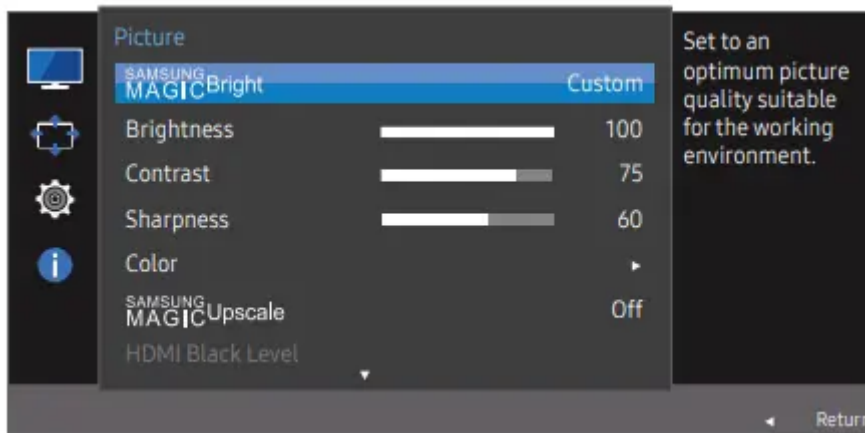
Select a language on the product and change the resolution on your PC to the optimum setting

Screen Setup

SAMSUNG MAGIC Bright

This menu provides an optimum picture quality suitable for the environment where the product will be used

You can customize the brightness to suit your preferences.



In PC mode

- Custom: Customize the contrast and brightness as required.
- Standard: Obtain a picture quality suitable for editing documents or using Internet.
- Cinema: Obtain the brightness and sharpness of TVs suitable for enjoying video and DVD content.
- Dynamic Contrast: Obtain balanced brightness through automatic contrast adjustment.

In AV mode

When the external input is connected through HDMI/DP and PC/AV Mode is set to AV, Bright has four automatic picture settings (Dynamic, Standard, Movie and Custom) that are preset at the factory. You can activate either Dynamic, Standard, Movie or Custom. You can select Custom which automatically recalls your personalized picture settings.

- Dynamic: Select this mode to view a sharper image than in Standard mode.

- Standard: Select this mode when the surroundings are bright. This also provides a sharp image.
- Movie: Select this mode when the surroundings are dark. This will save power and reduce eye fatigue.
- Custom: Select this mode when you want to adjust the image according to your preferences

Brightness

You can adjust the general brightness of the picture. (Range: 0~100)

A higher value will make the picture appear brighter.

Contrast

Adjust the contrast between the objects and background. (Range: 0~100)

A higher value will increase the contrast to make the object appear clearer

Sharpness

Make the outline of objects more clear or blurry. (Range: 0~100)

A higher value will make the outline of objects clearer.


Color

Adjust the tint of the screen

- Red: Adjust the red saturation level. Values closer to 100 mean greater intensity for the color.
- Green: Adjust the green saturation level. Values closer to 100 mean greater intensity for the color.
- Blue: Adjust the blue saturation level. Values closer to 100 mean greater intensity for the color.
- Color Tone: Select a color tone that best suits your viewing needs.
 - Cool 2: Set the color temperature to be cooler than Cool 1.
 - Cool 1: Set the color temperature to be cooler than Normal mode.
 - Normal: Display the standard color tone.
 - Warm 1: Set the color temperature to be warmer than Normal mode.
 - Warm 2: Set the color temperature to be warmer than Warm 1.
 - Custom: Customize the color tone

- Gamma: Adjust the middle level of luminance.
 - Mode1 / Mode2 / Mode3

SAMSUNG MAGIC Upscale

 function can enhance the layers of the picture details and the vividness of the picture.

The function has more obvious effects on low-resolution pictures.

- Off / Mode1 / Mode2

HDMI Black Level

If a DVD player or set-top box is connected to the product via HDMI, image quality degradation (contrast/ color degradation, black level, etc.) may occur, depending on the connected source device. In such case,

HDMI Black Level can be used to adjust the image quality.

If this is the case, correct the degraded picture quality using HDMI Black Level.

- Normal: Select this mode when there is no contrast ratio degradation.
- Low: Select this mode to reduce the black level and increase the white level when there is a contrast ratio degradation.

Eye Saver Mode

Set to an optimum picture quality suitable for eye relaxation.

TÜV Rheinland “Low Blue Light Content” is a certification for products which meet requirements for lower blue light levels. When Eye Saver Mode is 'On', the blue light that wavelength is around 400nm will decrease, and it will provide an optimum picture quality suitable for eye relaxation. At the same time, the blue light level is lower than in the default settings, and it was tested by TÜV Rheinland and certified as it met the requirements of TÜV Rheinland “Low Blue Light Content” standards.

Game Mode

Configure the product screen settings for game mode.

Use this feature when playing games on a PC or when a game console such as PlayStation™ or Xbox™ is connected

Response Time

Accelerate the panel response rate to make video appear more vivid and natural

Picture Size

Change the picture size

In PC mode

- **Auto:** Display the picture according to the aspect ratio of the input source.
- **Wide:** Display the picture in full screen regardless of the aspect ratio of the input source.

In AV mode

- **4:3:** Display the picture with an aspect ratio of 4:3. Suitable for videos and standard broadcasts.
- **16:9:** Display the picture with an aspect ratio of 16:9.
- **Screen Fit:** Display the picture with the original aspect ratio without cutting off.

Screen Adjustment

Configuring H-Position & V-Position

- **H-Position:** Move the screen to the left or right.
- **V-Position:** Move the screen up or down.

Configuring Coarse

Adjust the screen frequency

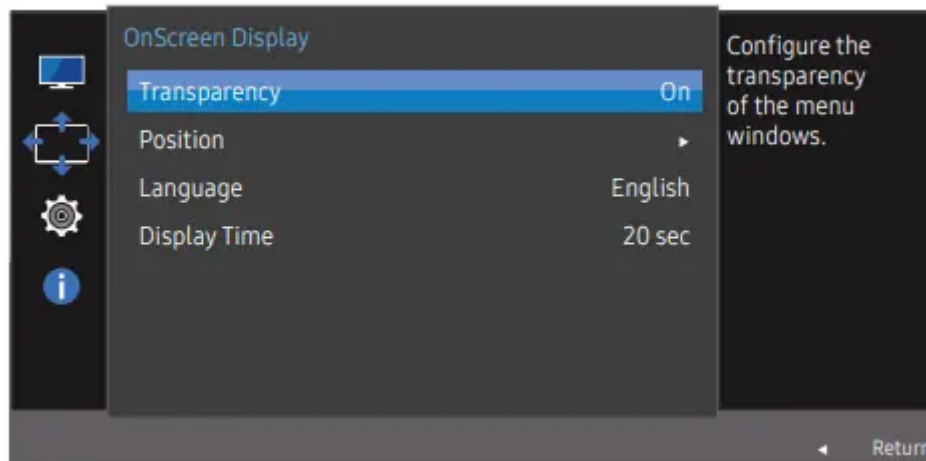
Configuring Fine

Fine-adjust the screen to obtain a vivid picture

Adjusting OSD (On Screen Display) settings

Transparency

Set the transparency for the menu windows



Position

Adjust the menu position.

Language

Set the menu language

Display Time

Set the on-screen display (OSD) menu to automatically disappear if the menu is not used for a specified period of time.

Display Time can be used to specify the time after which you want the OSD menu to disappear.

Setup and Reset

FreeSync

C32F391FW* / C32F395FW* / C32F397FW* models are not supported.

FreeSync technology is solution that eliminates screen tearing without all the usual lag and latency.

This feature will eliminate screen tearing and lag during game play. Improve your gaming experience.

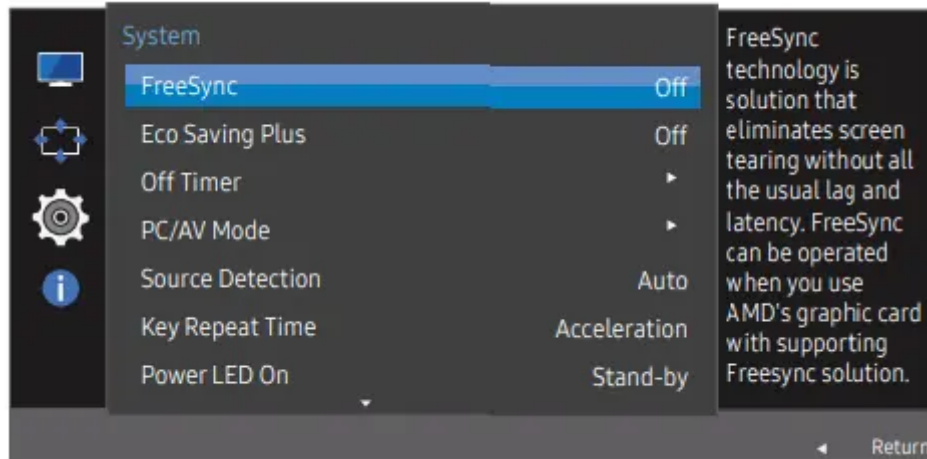
FreeSync is only available in HDMI or DisplayPort mode.

- Off: Disable FreeSync.
- Standard Engine: Enable the basic FreeSync functions of the AMD graphics card.

- Ultimate Engine: Enable the FreeSync feature with a higher screen frame rate. Screen tearing (abnormal sync between the screen and content) is reduced in this mode. Note that screen flickering may occur during game play.

When enable FreeSync function, please use maximum screen refresh rate for optimal freesync effect.

The refresh rate setting method please refer to Q & A How can I change the frequency?



If the FreeSync function is enabled, the following may occur:

- The screen may flicker when you play games depending on the game option settings. Decreasing the game setting values might help to remove the flicker. Installing the latest drivers from the AMD website may also fix this issue.
- The response rate during the game may fluctuate depending on the resolution. A higher resolution generally decreases the response rate.
- The sound quality of the monitor may be degraded.

The models in the Graphic Cards list supports FreeSync

FreeSync can only be used with specific AMD graphics card models. Refer to the following list for supported graphics cards:

Make sure to install the latest official graphics drivers from AMD that support FreeSync

- AMD Radeon R9 300 Series
- AMD Radeon R9 Fury X
- AMD Radeon R7 360
- AMD Radeon R9 295X2
- AMD Radeon R9 290X
- AMD Radeon R9 290
- AMD Radeon R9 285

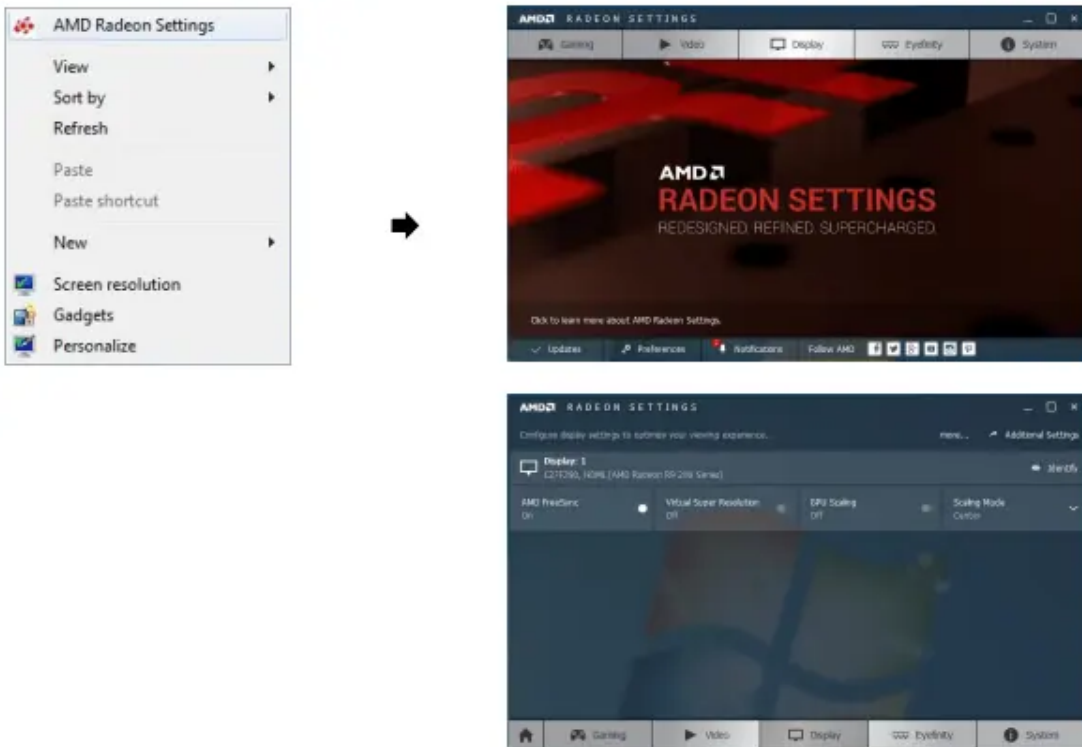
- AMD Radeon R7 260X
- AMD Radeon R7 260

How do you enable FreeSync?

1. Set FreeSync to Standard Engine or Ultimate Engine in the OSD menu.
2. Enable FreeSync in AMD Radeon Settings:

Right-click the mouse AMD Radeon Settings Display

The "AMD FreeSync" feature should be set to "On". Select to "On" if not already enabled.



Eco Saving Plus

Reduce energy consumption compared to consumption at the maximum brightness level.

- Off: Deactivate the Eco Saving Plus function.
- Auto: The power consumption will automatically be reduced by about 10% over the current setting. (The reduction of power consumption depends on the customer screen brightness condition.)
- Low: Saves up to 25 % energy compared to the maximum brightness.
- High: Saves up to 50 % energy compared to the maximum brightness.

Off Timer

Off Timer: Turn on Off Timer mode.

Turn Off After: The off timer can be set within a range of 1 to 23 hours. The product will automatically power off after the specified number of hours.

PC/AV Mode

Set PC/AV Mode to AV. The picture size will be enlarged.

This option is useful when you view a movie.

- Set to PC when connected to a PC.
- Set to AV when connected to an AV device

Source Detection

Select either Auto or Manual as the method to recognize input signal.

Key Repeat Time

Control the response rate of a button when the button is pressed.

Acceleration, 1 sec, or 2 sec can be selected. If No Repeat is selected, a command responds only once when a button is pressed.

Power LED On

Configure the settings to enable or disable the power LED located at the lower part of the product.

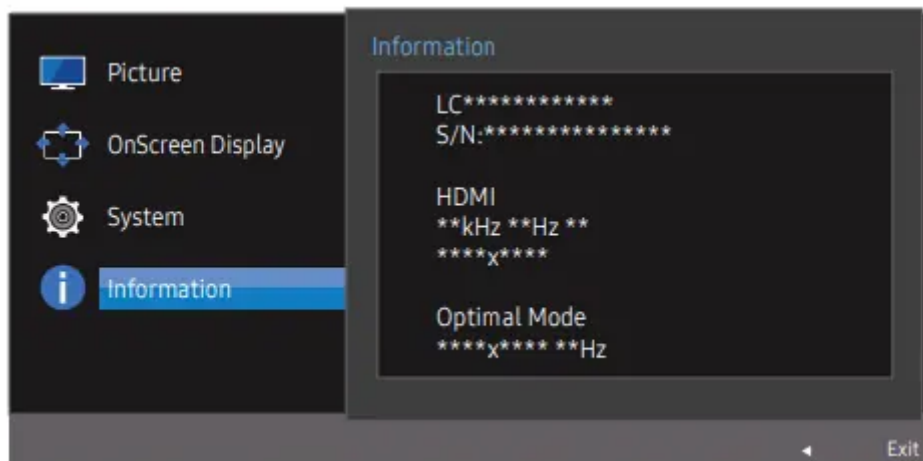
- Working: The power LED is on when the product is turned on.
- Stand-by: The power LED is on when the product is turned off.

Reset All

Return all the settings for the product to the default factory settings.

Information

View the current input source, frequency and resolution



Installing the Software

Easy Setting Box



Easy Setting Box enables users to use the monitor by partitioning multiple sections.

To install the latest version of Easy Setting Box, download it from the Samsung Electronics website at <http://www.samsung.com>.

Restrictions and Problems with the Installation

The Easy Setting Box installation may be affected by the Graphics Card, Motherboard and the

Networking Environment

System Requirements

Troubleshooting Guide

Requirements Before Contacting Samsung Customer Service Center

Testing the Product

Check if your product is operating normally by using the product test function.

If the screen is turned off and the power indicator blinks even though the product is properly connected to a PC, perform a self-diagnosis test.

1. Power off both the PC and product.
2. Disconnect the cables from the product.
3. Power on the product.
4. If the message Check Signal Cable appears, the product is working normally.

Checking the Resolution and Frequency

For a mode that exceeds the supported resolution(refer to Standard Signal Mode Table), the message Not Optimum Mode will appear for a short time.

Check the following.

► Installation issue (PC mode)

The screen keeps switching on and off.

Check the cable connection between the product and PC, and ensure the connectors are locked.

Blank spaces are found on all four sides of the screen when an HDMI or HDMI-DVI cable is connected to the product and PC.

The blank spaces found on the screen have nothing to do with the product.

Blank spaces on the screen are caused by the PC or graphics card. To resolve the problem, adjust the screen size in the HDMI or DVI settings for the graphics card.

If the graphics card settings menu does not have an option to adjust the screen size, update the graphics card driver to the latest version.

Please contact the graphics card or computer manufacturer for further details about how to adjust the screen settings.)

► Screen issue

The power LED is off. The screen will not switch on.

Check that the power cable is connected properly.

The message Check Signal Cable appears.

Check that the cable is properly connected to the product.

Check that the device connected to the product is powered on.

Not Optimum Mode is displayed.

This message appears when the signal from the graphics card exceeds the maximum resolution or frequency for the product.

Change the maximum resolution and frequency to suit the product performance, referring to Standard Signal Mode Table (P.43).

The images on the screen look distorted.

Check the cable connection to the product.

The screen is not clear. The screen is blurry.

Adjust Coarse and Fine.

Remove any accessories (video extension cable, etc.) and try again.

Set the resolution and frequency to the recommended level.

The screen appears unstable and shaky. There are shadows or ghost images left on the screen.

Check that the resolution and frequency for the PC are within the range of resolution and frequency compatible with the product. Next, if required, change the settings, referring to Standard Signal Mode Table (P.43) in this manual and the Information menu on the product.

The screen is too bright. The screen is too dark.

Adjust Brightness and Contrast.

Screen color is inconsistent.

Change the Color settings.

The colors on the screen have a shadow and are distorted.

Change the Color settings.

White does not really look white.

Change the Color settings.

There is no image on the screen and the power LED blinks every 0.5 to 1 second.

The product is operating in power-saving mode.

Press any key on the keyboard or move the mouse to return to normal operating mode.

Text is blurry.

If using a Windows OS (e.g. Windows 7, Windows 8, Windows 8.1 or Windows 10): Go to Control Panel

Fonts Adjust ClearType text and change Turn on ClearType.

Video playback is choppy.

Playback of high-definition large video files can be choppy. This may be because the video player is not optimized for the computer resource.

Try playing the file on another video player.

► **Sound issue**

There is no sound.

Check the connection of the audio cable or adjust the volume.

Check the volume.

The volume is too low.

Adjust the volume.

If the volume is still low after turning it up to the maximum level, adjust the volume on your PC sound card or software Program.

Video is available but there is no sound.

Sound cannot be heard if a HDMI-DVI cable is used to connect the input device.

Connect the device using an HDMI cable or a DP cable.

► **Source device issue**

A beeping sound is heard when my PC is booting.

If a beeping sound is heard when your PC is booting, have your PC serviced.

Q & A

How can I change the frequency?

Set the frequency on your graphics card.

- Windows XP: Go to Control Panel Appearance and Themes Display Settings Advanced Monitor, and adjust Refresh rate under Monitor settings.
- Windows ME/2000: Go to Control Panel Display Settings Advanced Monitor, and adjust Refresh rate under Monitor settings.
- Windows Vista: Go to Control Panel Appearance and Personalization Personalization Display Settings Advanced Settings Monitor, and adjust Refresh rate under Monitor settings.
- Windows 7: Go to Control Panel Appearance and Personalization Display Screen Resolution Advanced settings Monitor, and adjust Refresh rate under Monitor settings.
- Windows 8(Windows 8.1): Go to Settings Control Panel Appearance and Personalization Display Screen Resolution Advanced settings Monitor, and adjust Refresh rate under Monitor settings.

- Windows 10: Go to Settings System Display Advanced display settings Display adapter properties Monitor, and adjust Screen refresh rate under Monitor settings.

How can I change the resolution?

- Windows XP: Go to Control Panel Appearance and Themes Display Settings, and adjust the resolution.
- Windows ME/2000: Go to Control Panel Display Settings, and adjust the resolution.
- Windows Vista: Go to Control Panel Appearance and Personalization Personalize Display Settings, and adjust the resolution.
- Windows 7: Go to Control Panel Appearance and Personalization Display Adjust Resolution, and adjust the resolution.
- Windows 8(Windows 8.1): Go to Settings Control Panel Appearance and Personalization Display Adjust Resolution, and adjust the resolution.
- Windows 10: Go to Settings System Display Advanced display settings, and adjust the resolution.

How do I set power-saving mode?

- Windows XP: Set power-saving mode in Control Panel Appearance and Themes Display Screen Saver Settings Power options or BIOS SETUP on the PC.
- Windows ME/2000: Set power-saving mode in Control Panel Display Screen Saver Settings Power options or BIOS SETUP on the PC.
- Windows Vista: Set power-saving mode in Control Panel Appearance and Personalization Personalize Screen Saver Settings Power options or BIOS SETUP on the PC.
- Windows 7: Set power-saving mode in Control Panel Appearance and Personalization Personalize Screen Saver Settings Power options or BIOS SETUP on the PC.
- Windows 8(Windows 8.1): Set power-saving mode in Settings Control Panel Appearance and Personalization Personalize Screen Saver Settings Power options or BIOS SETUP on the PC.
- Windows 10: Set power-saving mode in Settings Personalization Lock screen Screen timeout settings Power & sleep or BIOS SETUP on the PC.

Specifications

General

OS	Hardware
<ul style="list-style-type: none"> Windows XP 32Bit/64Bit Windows Vista 32Bit/64Bit Windows 7 32Bit/64Bit Windows 8 32Bit/64Bit Windows 8.1 32Bit/64Bit Windows 10 32Bit/64Bit 	<ul style="list-style-type: none"> At least 32MB of memory At least 60MB of free space on the hard disk drive

Standard Signal Mode Table

Model Name	C22F390FH* / C22F392FH*	C24F390FH* / C24F392FH* / C24F394FH* / C24F396FH* / C24F399FH*	C27F390FH* / C27F391FH* / C27F396FH* / C27F397FH* / C27F398FW*	C32F391FW* / C32F395FW* / C32F397FW*
Size	54.6 cm	59.8 cm	68.5 cm	80.1 cm
Display area	476.64 mm (H) x 268.11 mm (V)	521.40 mm (H) x 293.28 mm (V)	596.736 mm (H) x 335.664 mm (V)	698.40 mm (H) x 392.85 mm (V)
Pixel Pitch	0.24825 mm (H) x 0.24825 mm (V)	0.27156 mm (H) x 0.27156 mm (V)	0.3114 mm (H) x 0.3114 mm (V)	0.36375 mm (H) x 0.36375 mm (V)
Maximum Pixel Clock	148.5 MHz (Analog, HDMI) 148.5 MHz (HDMI, DisplayPort) -Applicable only to models C27F398FW*, C32F391FW*, C32F395FW*, C32F397FW*			
Power Supply	AC100-240V~ 50/60Hz Based on the AC voltage of the adapter. For the DC voltage of the product, refer to the product label.			
Signal connectors	D-SUB, HDMI HDMI, DisplayPort (Applicable only to models C27F398FW*, C32F391FW*, C32F395FW*, C32F397FW*)			
Environmental conditions	Operating Temperature: 10 °C – 40 °C (50 °F – 104 °F) / Humidity: 10 % – 80 %, non-condensing Storage Temperature: -20 °C – 45 °C (-4 °F – 113 °F) / Humidity: 5 % – 95 %, non-condensing			

Model Name	C22F390FH* / C22F392FH* / C24F390FH* / C24F392FH* / C24F394FH* / C24F396FH* / C24F399FH* / C27F390FH* / C27F391FH* / C27F396FH* / C27F397FH* / C27F398FW*	C32F391FW* / C32F395FW* / C32F397FW*
Synchronization	Horizontal Frequency: 30 – 81 kHz Vertical Frequency: 56 – 72 Hz	30 – 81 kHz 56 – 61 Hz
Resolution	Optimum resolution: 1920 x 1080 @ 60 Hz Maximum resolution: 1920 x 1080 @ 60 Hz	1920 x 1080 @ 60 Hz 1920 x 1080 @ 60 Hz

If a signal that belongs to the following standard signal modes is transmitted from your PC, the screen will automatically be adjusted. If the signal transmitted from the PC does not belong to the standard signal modes, the screen may be blank even though the power LED turns on. In such a case, change the settings according to the following table by referring to the graphics card user manual.

Resolution	Horizontal Frequency (kHz)	Vertical Frequency (Hz)	Pixel Clock (MHz)	Sync Polarity (H/V)
IBM, 720 x 400	31.469	70.087	28.322	-/*
MAC, 640 x 480	35.000	66.667	30.240	-/-
VESA, 640 x 480	31.469	59.940	25.175	-/-
VESA, 800 x 600	35.156	56.250	36.000	+/*
VESA, 800 x 600	37.879	60.317	40.000	+/*
VESA, 800 x 600	48.077	72.188	50.000	+/*
VESA, 1024 x 768	48.363	60.004	65.000	-/-
VESA, 1024 x 768	56.476	70.069	75.000	-/-
VESA, 1280 x 720	45.000	60.000	74.250	+/*
VESA, 1280 x 800	49.702	59.810	83.500	-/*
VESA, 1280 x 1024	63.981	60.020	108.000	+/*

Appendix

Responsibility for the Pay Service (Cost to Customers)

Not a product defect

Cleaning of the product, Adjustment, Explanation, Re-installation and etc.

- If a service technician gives instructions on how to use product or simply adjusts options without disassembling product.
- If a defect is caused by external environmental factors (Internet, Antenna, Wired Signal, etc.)
- If a product is reinstalled or devices are connected additionally after installing the purchased product for the first time.
- If a product is reinstalled to move to a different spot or to move to a different house.
- If customer requests instructions on how to use because of another company's product.
- If customer requests instructions on how to use the network or another company's Program.
- If customer requests software installation and setup for the product.
- If a service technician removes/cleans dusts or foreign materials inside of the product.
- If customer requests an installation additionally after purchasing a product through homeshopping or online.

A Product damage caused by customer's fault

Product damage caused by customer's mishandling or wrong repair

- If a product damage is caused by;
- External impact or drop.
- Use of supplies or separately sold product unspecified by Samsung.
- Repair from a person besides an engineer of outsourcing service company or partner of Samsung
- Electronics Co., Ltd.
- Remodeling or repairing the product by customer.
- Using it with incorrect voltage or non-authorized electrical connections.
- Not following the "cautions" in User Manual.

Others

- If product fails by natural disaster. (lightning, fire, earthquake, flood damage, etc)
- If consumable components are all used up. (Battery, Toner, Fluorescent lights, Head, Vibrator, Lamp, Filter, Ribbon, etc.)

Warning

This content is compiled from multiple sources and is provided for reference purposes only. It may not be complete or fully applicable to all situations. If you are unable to resolve your issue, please contact the product manufacturer or an authorized service provider for official support.