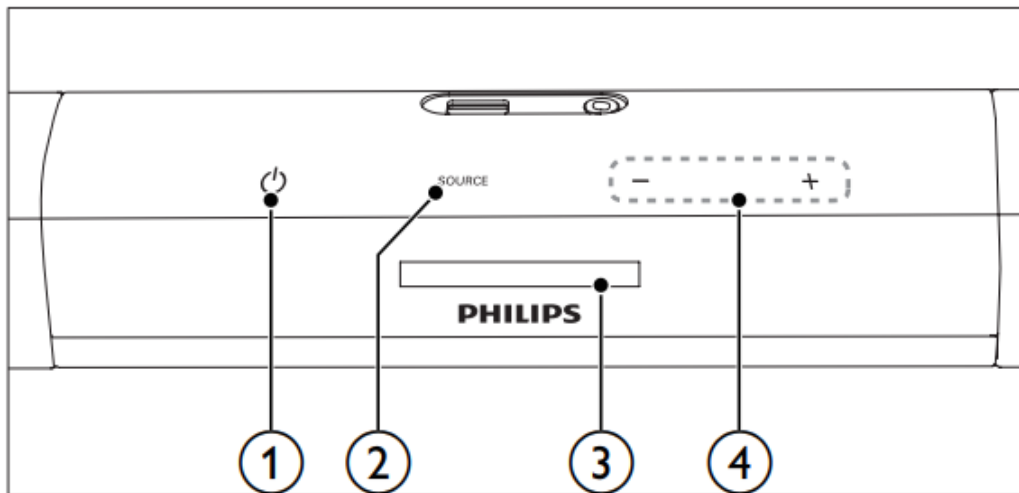


Your SoundBar

Main unit

This section includes an overview of the main unit.



1. (Standby-On/Standby indicator)

- Switch the SoundBar on or to standby
- When the SoundBar is in standby the standby indicator turns red.

2. SOURCE

Select an input source for the SoundBar:

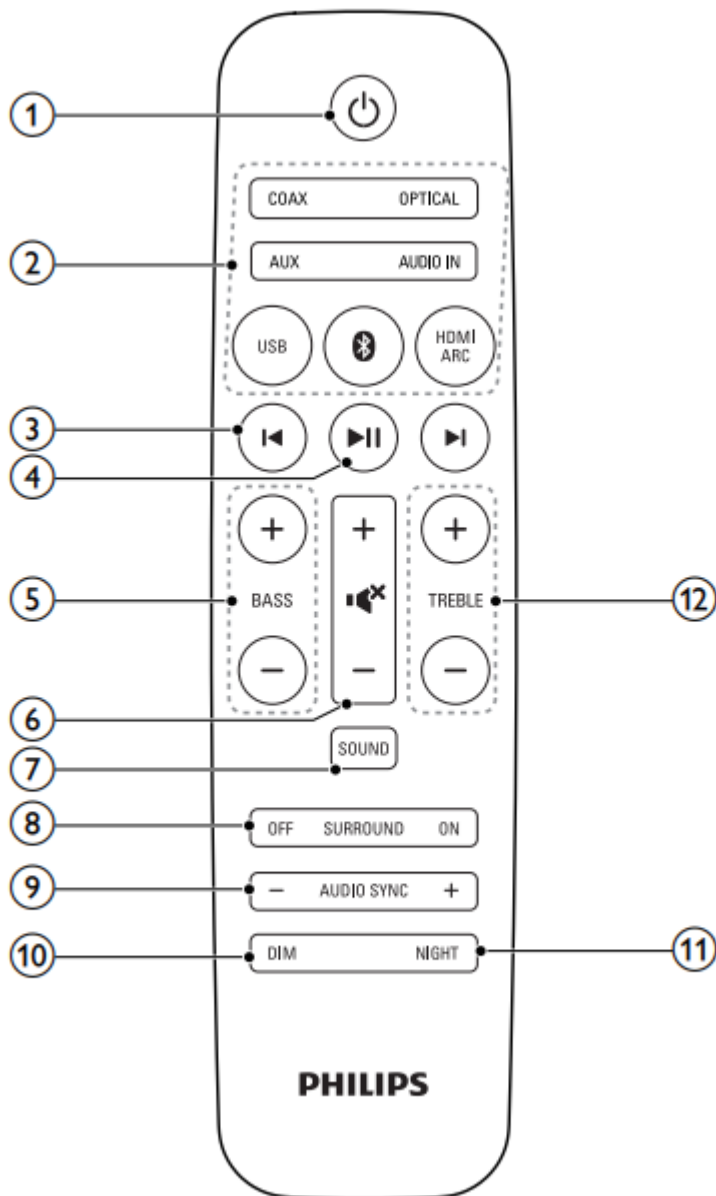
3. Display panel

4. +/- (Volume)

- Increase or decrease volume.

Remote control

This section includes an overview of the remote control.



1. (Standby-On)

Switch the SoundBar on or to standby

2. Source buttons

HDMI ARC: Switch your source to HDMI ARC connection.

 : Switch to Bluetooth mode.

USB: Switch to USB mode.

OPTICAL: Switch your audio source to the optical connection.

COAX: Switch your audio source to the coaxial connection.

AUDIO IN: Switch your audio source to the MP3 connection (3.5mm jack).

AUX: Switch your audio source to the AUX connection.

3. (Previous/Next)

Skip to the previous or next track in USB mode.


4. (Play/Pause)

- Start, pause or resume play in USB mode.

5. BASS +/-

Increase or decrease bass.

6. Volume control

- +/-: Increase or decrease volume.
- : Mute or restore volume.

7. SOUND

Select a sound mode.

8. SURROUND ON/OFF

Select surround or stereo sound.

9. AUDIO SYNC +/-

Increase or decrease audio delay

10. DIM

Set the brightness of SoundBar display panel.

11. night

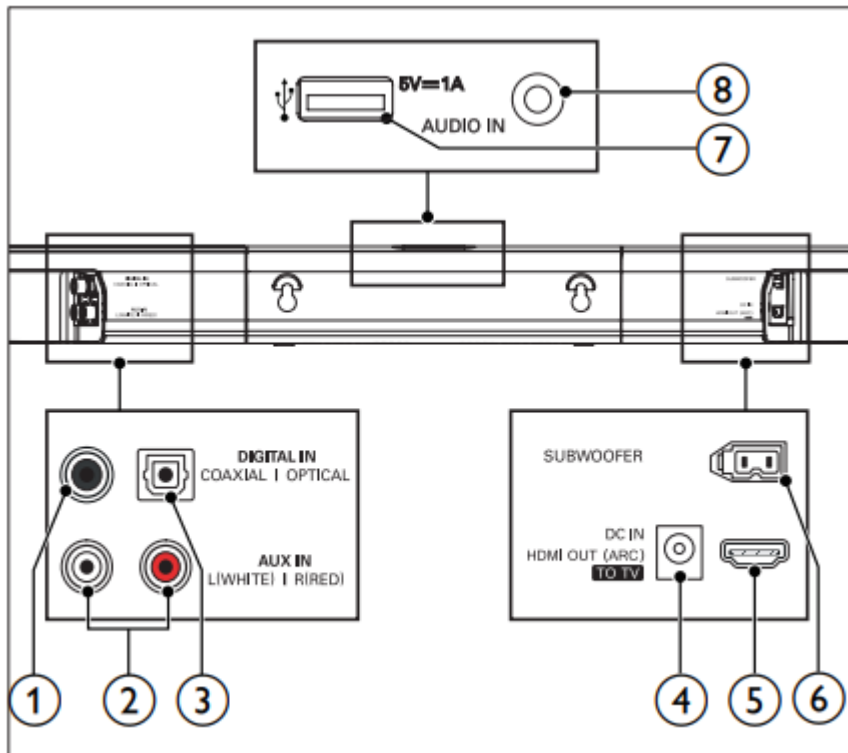
Turn night mode on or off.

12. TREBLE +/-

Increase or decrease treble.

Connectors

This section includes an overview of the connectors available on your SoundBar



1. DIGITAL IN-COAXIAL

Connect to a coaxial audio output on the TV or a digital device.

2. AUX IN (L/R)

Connect to an analog audio output on the TV or an analog device.

3. DIGITAL IN-OPTICAL

Connect to an optical audio output on the TV or a digital device.

4. DC IN

Connect to the power supply.

5. HDMI OUT (ARC) - TO TV

Connect to the HDMI input on the TV.

6. subwoofer

Connect to the supplied subwoofer

7. (USB)

- Audio input from a USB storage device.
- Upgrade software of this product.
- Charge a USB device.

8. AUDIO IN

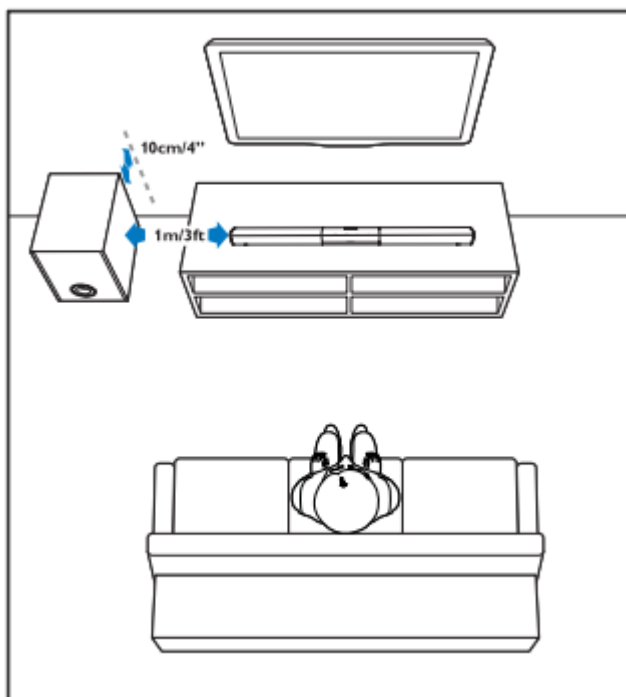
- Audio input from, for example, an MP3 player (3.5mm jack).

Connect and set up

This section helps you connect your SoundBar to a TV and other devices, and then set it up. For information about the basic connections of your SoundBar and accessories, see the quick start guide.

Placement

Place the subwoofer at least 1 meter (3 feet) away from your SoundBar, and ten centimeters away from the wall. For best results, place your subwoofer as shown below

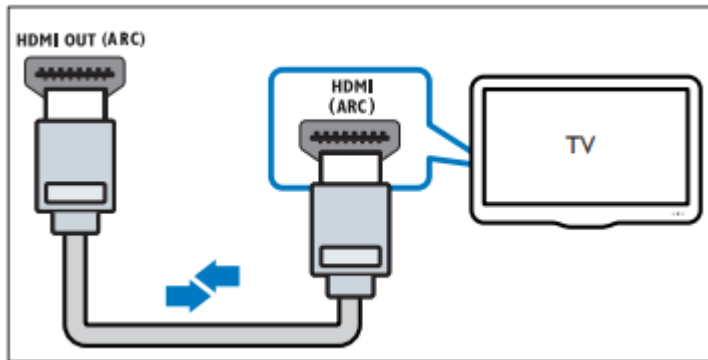


Connect to TV

Connect your SoundBar to a TV. You can listen to audio from TV programs through your SoundBar. Use the best quality connection available on your SoundBar and TV.

Connect to TV through HDMI (ARC)

Your SoundBar supports HDMI with Audio Return Channel (ARC). If your TV is HDMI ARC compliant, you can hear the TV audio through your SoundBar by using a single HDMI cable



1. Using a High Speed HDMI cable, connect the HDMI OUT (ARC)-TO TV connector on your SoundBar to the HDMI ARC connector on the TV.

- The HDMI ARC connector on the TV might be labeled differently. For details, see the TV user manual.

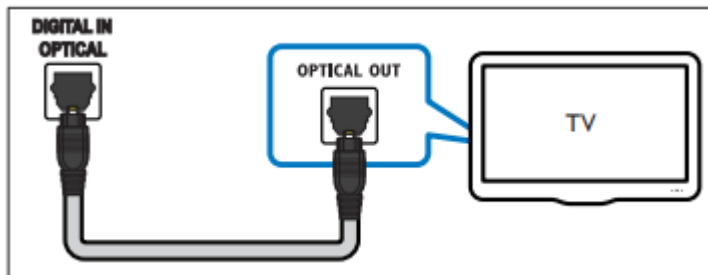
2. On your TV, turn on HDMI-CEC operations. For details, see the TV user manual.

Connect audio from TV and other devices

Play audio from TV or other devices through your Soundbar speakers. Use the best quality connection available on your TV, Soundbar, and other devices.

Option 1: Connect audio through a digital optical cable

Best quality audio

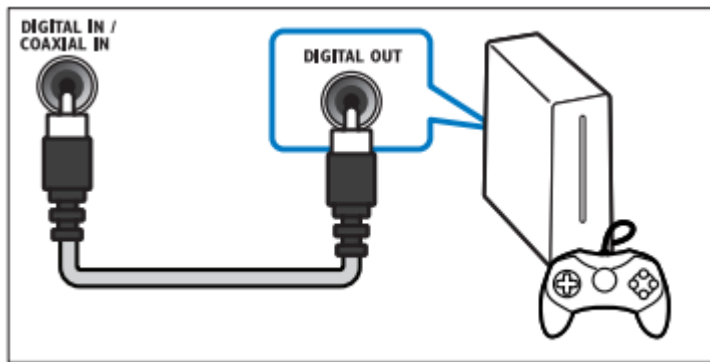


1. Using an optical cable, connect the OPTICAL connector on your SoundBar to the OPTICAL OUT connector on the TV or other device.

- The digital optical connector might be labeled SPDIF or SPDIF OUT.

Option 2: Connect audio through a digital coaxial cable

Good quality audio

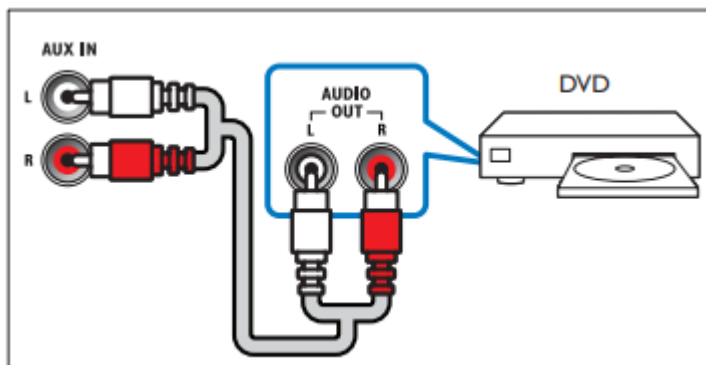


1. Using a coaxial cable, connect the COAXIAL connector on your SoundBar to the COAXIAL/DIGITAL OUT connector on the TV or other device.
 - The digital coaxial connector might be labeled DIGITAL AUDIO OUT.

Option 3: Connect audio through analog audio cables

Basic quality audio

1. Using an analog cable, connect the AUX connectors on your SoundBar to the AUDIO OUT connectors on the TV or other device




Use your SoundBar

This section helps you use the SoundBar to play audio from connected devices.

Before you start

- Make the necessary connections described in the quick start guide and the user manual.
- Switch the SoundBar to the correct source for other devices.

Adjust the volume

1. Press +/- (**Volume**) to increase or decrease a volume level.
 - To mute sound, press  (**Mute**).

- To restore the sound, press  (**Mute**) again or press +/- (**Volume**).

Choose your sound

This section helps you choose the ideal sound for your video or music.

Sound mode

Select predefined sound modes to suit your video or music.

1. Press **SOUND** to select a sound option from the display panel.

- **AUTO**: Automatically select a sound setting based on the sound stream.
- **POWERFUL**: Enjoy thrilling arcade sounds, ideal for action-packed videos and loud parties.
- **BALANCED**: Experience the original sound of your movies and music, without added sound effects.
- **BRIGHT**: Spice up your dull movies and music with added sound effects.
- **CLEAR**: Hear every detail in your music and clear voices in your movies.
- **WARM**: Experience spoken words and music vocals in comfort.
- **PERSONAL**: Personalize the sound based on your preferences.

Surround sound mode

Experience an immersive audio experience with surround sound modes.

1. Press **SURROUND ON/OFF** to turn surround mode on or off.

- **On**: Create a surround listening experience.
- **Off**: Two-channel stereo sound. Ideal for listening to music.

Equalizer

Change the high frequency (treble) and low frequency (bass) settings of the SoundBar

1. Press **TREBLE +/-** or **BASS +/-** to change the frequency

Synchronize video and sound

If the audio and video are not synchronized, delay the audio to match the video.

1. Press **AUDIO SYNC +/-** to synchronize the audio with the video.

Night mode

For quiet listening, night mode decreases the volume of loud sounds when audio is played. Night mode is only available for Dolby Digital soundtracks.





1. Press **NIGHT** to turn night mode on or off.

Play audio through Bluetooth

Through Bluetooth, connect the SoundBar with your Bluetooth device (such as an iPad, iPhone, iPod touch, Android phone, or laptop), and then you can listen to the audio files stored on the device through your SoundBar speakers.

What you need

- A Bluetooth device which supports Bluetooth profile A2DP AVRCP and with Bluetooth version as 3.0 + EDR.
- The maximum operational range between the SoundBar and a Bluetooth device is approximately 10 meters (30 feet).

1. Press  on the remote control to switch the SoundBar to Bluetooth mode.
 - BT is displayed on the display panel, blinking.
2. On the Bluetooth device, switch on Bluetooth, search for and select PHILIPS HTL2161 to start connection (see the user manual of the Bluetooth device on how to enable Bluetooth).
 - During connection, BT on the display panel blinks.
3. Wait until you hear a beep sound from the SoundBar:
 - When the Bluetooth connection succeeds, BT is displayed on the display panel.
 - If the connection fails, BT on the display panel blinks continuously
4. Select and play audio files or music on your Bluetooth device.
 - During play if a call is coming, music play is paused. Play resumes when the call ends.
 - If your Bluetooth device supports AVRCP profile, on the remote control you can press  /  to skip to a track, or press  to pause/resume play
5. To exit Bluetooth, select other source.
 - When you switch back to Bluetooth mode, Bluetooth connection remains active.

MP3 player

Connect your MP3 player to play your audio files or music.

What you need

- An MP3 player
 - A 3.5mm stereo audio cable.
1. Using the 3.5mm stereo audio cable, connect the MP3 player to the **AUDIO IN** connector on your SoundBar.



2. Press **AUDIO IN** on the remote control.
3. Press the buttons on the MP3 player to select and play audio files or music.

USB storage devices

Enjoy audio on a USB storage device, such as an MP3 player and USB flash memory etc.

What you need

- A USB storage device that is formatted for FAT or NTFS file systems, and complies with the Mass Storage Class.
 - An MP3 file on a USB storage device
1. Connect a USB storage device to this product.
 2. Press **USB** on the remote control.
 3. Use the remote control to control play

Button	Action
	Start, pause or resume play.
	Skip to the previous or next track.
USB	During USB play, press repeatedly to select a repeat or shuffle mode, or turn off a play mode.

Auto standby

When playing media from a connected device, the SoundBar automatically switches to standby after 15 minutes of button inactivity and no audio/video play from a connected device.

Set display brightness

You can press **DIM** repeatedly to select a different brightness level of the display panel on this product.

Apply factory settings

You can reset this product to the default settings programmed at the factory

1. In any source mode, on the remote control press **Volume -**, **BASS -**, and **TREBLE -** in sequence within three seconds.
- When the factory settings restore is complete, the product automatically switches off and restarts.

Troubleshooting

Main unit

The buttons on the SoundBar do not work.

- Disconnect the SoundBar from the power supply for a few minutes, then reconnect.

Sound

No sound from SoundBar speakers.

- Connect the audio cable from your SoundBar to your TV or other devices. However, you do not need a separate audio connection when the SoundBar and TV are connected through **HDMI ARC** connection.
- Reset your SoundBar to its factory settings.
- On the remote control, select the correct audio input.
- Make sure that the SoundBar is not muted.

Distorted sound or echo.

- If you play audio from the TV through the SoundBar; make sure that the TV is muted.

Audio and video are not synchronized.

- Press **AUDIO SYNC +/-** to synchronize the audio with the video.

Error message is displayed on the display panel.

- When "ERROR" is displayed, it indicates that an input audio format is not supported.
- When "USB ERROR" is displayed, it indicates that the connected USB device is not supported.
- When "HDMI ARC" blinks, it indicates that the connected TV is not HDMI ARC compliant or an unsupported audio format is detected.

Bluetooth

A device cannot connect with the SoundBar.

- The device does not support the compatible profiles required for the SoundBar
- You have not enabled the Bluetooth function of the device. See the user manual of the device on how to enable the function.
- The device is not correctly connected. Connect the device correctly.
- The SoundBar is already connected with another Bluetooth device. Disconnect the connected device, then try again.

Quality of audio play from a connected Bluetooth device is poor.

- The Bluetooth reception is poor Move the device closer to the SoundBar or remove any obstacle between the device and the SoundBar:

The connected Bluetooth device connects and disconnects constantly.

- The Bluetooth reception is poor Move the device closer to the SoundBar or remove any obstacle between the device and the SoundBar.
- Turn off Wi-Fi function on the Bluetooth device to avoid interference.
- For some Bluetooth, the Bluetooth connection can be deactivated automatically to save power. This does not indicate any malfunction of the SoundBar

Warning

This content is compiled from multiple sources and is provided for reference purposes only. It may not be complete or fully applicable to all situations. If you are unable to resolve your issue, please contact the product manufacturer or an authorized service provider for official support.