

## SCREEN SETUP

Function Key Guide →  → Picture

### SAMSUNG MAGIC Bright

---

This menu provides an optimum picture quality suitable for the environment where the product will be used.

- This menu is not available when Eco Saving Plus is enabled.
- This menu is not available when Game Mode is enabled.
- This menu is not available when Eye Saver Mode is enabled.
- Not available when PIP/PBP Mode is set to On.

#### In PC mode

- Custom: Customise the contrast and brightness as required.
- Standard: Obtain a picture quality suitable for editing documents or using Internet.
- Cinema: Obtain the brightness and sharpness of monitors suitable for enjoying video and DVD content.
- Dynamic Contrast: Obtain balanced brightness through automatic contrast adjustment.

#### In AV mode

When the external input is connected through HDMI/DP and PC/AV Mode is set to AV, SAMSUNG MAGICBright has four automatic picture settings (Dynamic, Standard, Movie and Custom) that are preset at the factory. You can activate either Dynamic, Standard, Movie or Custom. You can select Custom which automatically recalls your personalised picture settings.

- Dynamic: Select this mode to view a sharper image than in Standard mode.
- Standard: Select this mode when the surroundings are bright.
- Movie: Select this mode when the surroundings are dark. This will save power and reduce eye fatigue.
- Custom: Select this mode when you want to adjust the image according to your preferences.

#### Brightness

You can adjust the general brightness of the picture. (Range: 0~100)


A higher value will make the picture appear brighter.

- This menu is not available when **SAMSUNG MAGICBright** is set to Dynamic Contrast mode.
- This menu is not available when Eco Saving Plus is enabled.
- This menu is not available when Eye Saver Mode is enabled.

## Contrast

Adjust the contrast between the objects and background. (Range: 0~100)

A higher value will increase the contrast to make the object appear clearer.

- This option is not available when **SAMSUNG MAGICBright** is in Cinema or Dynamic Contrast mode.
- This menu is not available when Game Mode is enabled.
- This menu is not available when PIP/PBP Mode is set to On and the Screen Size is set to  (PBP Mode).

## Sharpness

Make the outline of objects more clear or blurry. (Range: 0~100)

A higher value will make the outline of objects clearer.

- This option is not available when **SAMSUNG MAGICBright** is in Cinema or Dynamic Contrast mode.
- This menu is not available when Game Mode is enabled.
- Not available when PIP/PBP Mode is set to On.

## Color

Adjust the tint of the screen.

- This menu is not available when **SAMSUNG MAGICBright** is set to Cinema or Dynamic Contrast mode.
- This menu is not available when Game Mode is enabled.
- This menu is not available when Eye Saver Mode is enabled.
- Not available when PIP/PBP Mode is set to On.
  - Red: Adjust the red saturation level. Values closer to 100 mean greater intensity for the colour.
  - Green: Adjust the green saturation level. Values closer to 100 mean greater intensity for the colour.
  - Blue: Adjust the blue saturation level. Values closer to 100 mean greater intensity for the colour.

- Color Tone: Select a colour tone that best suits your viewing needs.
  - Cool 2: Set the colour temperature to be cooler than Cool 1.
  - Cool 1: Set the colour temperature to be cooler than Normal mode.
  - Normal: Display the standard colour tone.
  - Warm 1: Set the colour temperature to be warmer than Normal mode.
  - Warm 2: Set the colour temperature to be warmer than Warm 1.
  - Custom: Customise the colour tone.
  - When the external input is connected through HDMI/DP and PC/AV Mode is set to AV, Color Tone has four colour temperature settings (Cool, Normal, Warm and Custom).
- Gamma: Adjust the middle level of luminance.
    - Mode1 / Mode2 / Mode3

## SAMSUNG MAGIC Upscale

---

**SAMSUNG MAGIC Upscale** function can enhance the layers of the picture details and the vividness of the picture.

The function has more obvious effects on low-resolution pictures.

This menu is not available when **SAMSUNG MAGIC Bright** is set to Cinema or Dynamic Contrast mode.

This menu is not available when Game Mode is enabled.

Not available when PIP/PBP Mode is set to On.

- Off / Mode1 / Mode2
  - Comparing with Mode1, Mode2 has a stronger effect.

## HDMI Black Level

If a DVD player or set-top box is connected to the product via HDMI, image quality degradation (contrast/ colour degradation, black level, etc.) may occur, depending on the connected source device.

In such case, HDMI Black Level can be used to adjust the image quality.

- This function is only available in HDMI mode.
- Not available when PIP/PBP Mode is set to On.
  - Normal: Select this mode when there is no contrast ratio degradation.
  - Low: Select this mode to reduce the black level and increase the white level when there is a contrast ratio degradation.

- HDMI Black Level may not be compatible with some source devices.
- The HDMI Black Level feature is only activated at a certain AV resolution, such as 720P @ 60 Hz and 1080P @60Hz.

## Eye Saver Mode

Set to an optimum picture quality suitable for eye relaxation.

TÜV Rheinland “Low Blue Light Content” is a certification for products which meet requirements for lower blue light levels. When Eye Saver Mode is 'On', the blue light that wavelength is around 400nm will decrease, and it will provide an optimum picture quality suitable for eye relaxation. At the same time, the blue light level is lower than in the default settings, and it was tested by TÜV Rheinland and certified as it met the requirements of TÜV Rheinland “Low Blue Light Content” standards.

## Game Mode




Configure the product screen settings for game mode.

Use this feature when playing games on a PC or when a game console such as PlayStation™ or Xbox™ is connected.

- This menu is not available when Eye Saver Mode is enabled.
- When the product turns off, enters power-saving mode or changes input sources, Game Mode turns Off even if it is set to On.
- If you want to keep Game Mode enabled all the time, select Always On.
- Not available when PIP/PBP Mode is set to On.


## Response Time

Accelerate the panel response rate to make video appear more vivid and natural.

- Use Standard mode when not playing a video or game.
- This menu is not available when PIP/PBP Mode is set to On and the Screen Size is set to  /  /  (PIP Mode).

## Screen Ratio

Change the picture size.

- This menu is not available when PIP/PBP Mode is set to On and the Screen Size is set to  (PBP Mode).

## In PC mode

- Auto: Display the picture according to the aspect ratio of the input source.

- Wide: Display the picture in full screen regardless of the aspect ratio of the input source.

### **In AV mode**

- 4:3: Display the picture with an aspect ratio of 4:3. Suitable for videos and standard broadcasts.
- 16:9: Display the picture with an aspect ratio of 16:9.
- **Screen Fit:** Display the picture with the original aspect ratio without cutting off.
- The function may not be supported depending on the ports provided with the product.
  - Changing the Screen Ratio is available when the following conditions are satisfied.
  - The input source is 480p, 576p, 720p, or 1080p and product can display normally (Not every model can support all of these signals.).
  - This can only be set when the external input is connected through HDMI/DP and PC/AV Mode is set to AV.

### **Screen Adjustment**

- This option is only available when PC/AV Mode is set to AV.
- This menu is only available when Screen Ratio is set to Screen Fit in AV Mode.

When a 480P or 576P or 720P or 1080P signal is input in AV mode and the product can display normally, select Screen Fit to adjust horizontal position and vertical position in 0-6 levels.

### **Configuring H-Position & V-Position**

H-Position: Move the screen to the left or right.

V-Position: Move the screen up or down.

## **CONFIGURING THE PIP/PBP SETTINGS**

### **PIP/PBP Mode**

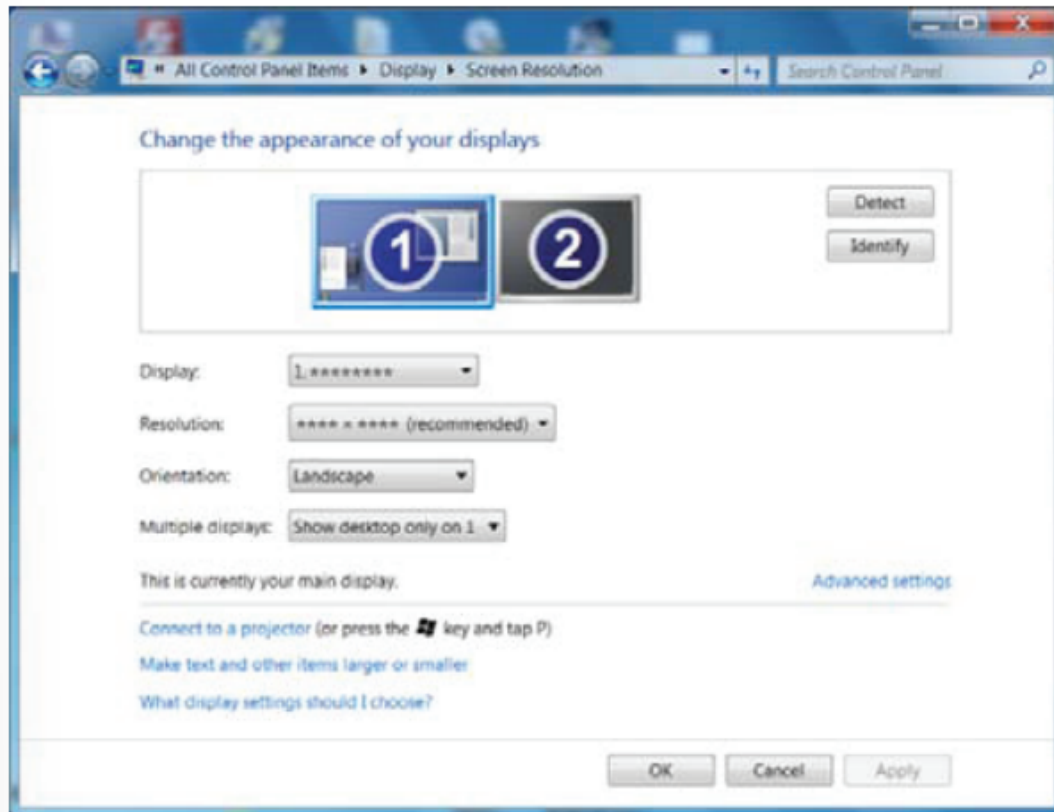
---

Enable or disable the PIP/PBP Mode function.

The PIP (Picture in Picture) function separates the screen into two parts. One source device is displayed on the main screen at the same time the another source device is displayed in inset windows.

The PBP (Picture by Picture) function separates the screen in half displaying output from two different source devices simultaneously on the left and right sides of the screen.

- PIP/PBP mode is compatible with Windows 7, Windows 8, and Windows 10.
- The PIP/PBP function may not be available depending on the specifications of the graphics card used. If the screen is blank in PIP/PBP mode when the optimum resolution is selected, go to Control Panel → Display → Screen Resolution and click Detect on the PC. (Instructions are based on Windows 7.) If the screen is blank when the resolution is set to the optimum resolution, change the resolution to 1280 x 1024.



- The screen may flicker briefly or appear after a delay when you enable or disable the PIP/PBP function or when you change the screen size with the PIP/PBP function activated. This can typically arise when a PC and a product are connected to two or more input sources. It has nothing to do with the performance of a product. The issue is mainly caused when the video signals are delayed in transmission to the product depending on the graphics card performance.
- When the PIP/PBP function is enabled, the resolution will not be able to automatically switch to the optimum resolution due to a compatibility issue between the graphics card and the Windows system. Set PIP/PBP Mode to Off. Alternatively, restart the product, then set the resolution to the optimum setting using the Windows interface.
- If the product is set to an incompatible resolution, the product may display an abnormal or blank screen. Change to a supported resolution by referring to the Standard Signal Mode Table.

## Screen Size

- Select the size and aspect ratio of the sub-screen





## Position

Select the position of the sub-screen from the available options.



## Sound Source

Set which screen you want to hear the sound for.

- PBP mode 
- PIP mode 


## Source


Select the source for each screen.

### PBP Mode (available in PBP mode(Screen Size ))

- The input source for each screen changes.
- The screen may flicker if the input signal is unstable.
- When the input signal of the left and right screens are the same, the operation cannot be performed.
- When the Function Key Guide appears, move the JOG button LEFT to select the icon and then press the JOG button. The same PBP source setting menu appears. The mode switches in the order of DisplayPort → HDMI1 → HDMI2.

### PIP Mode (available in PIP mode(Screen Size ))

- The input source for the sub screen changes.
- With the exception of the current input source for main screen, the other two input sources can be selected. Use the function key and go to  → PIP/PBP Mode → Source to select the input source.
- The screen may flicker if the input signal is unstable.

- When the Function Key Guide appears, move the JOG button LEFT to select the  icon and then press the JOG button. The main screen will switch in the order DisplayPort → HDMI1 → HDMI2. With the exception of the current input source for the sub screen, the other two input sources can be selected for the main screen.

## Screen Ratio

Select the image size for each screen.

### PBP Mode (available in PBP mode(Screen Size ))

#### In PC mode

- Auto: Display the picture according to the aspect ratio of the each screen input source.
- Wide: Display the picture in full screen regardless of the aspect ratio of the each screen input source.

#### In AV mode

- 4:3: Display the picture of the sub-screen with an aspect ratio of 4:3. Suitable for videos and standard broadcasts.
- 16:9: Display the picture of the sub-screen with an aspect ratio of 16:9.
- Screen Fit: Display the picture of the sub-screen with the original aspect ratio without cutting anything off.
- The function may not be supported depending on the ports provided with the product.
- Changing the screen size is available when the following conditions are satisfied.
  - The input source is 480p, 576p, 720p, or 1080p and product can display normally (Not every model can support all of these signals.).
  - This can only be set when the external input is connected through HDMI/DP and PC/AV Mode is set to AV.

### PIP Mode (available in PIP mode (Screen Size / / ))

#### In PC mode

- Auto: Display the picture according to the aspect ratio of the each screen input source.
- Wide: Display the picture in full screen regardless of the aspect ratio of the each screen input source.

## In AV mode

- 4:3: Display the picture of the sub-screen with an aspect ratio of 4:3. Suitable for videos and standard broadcasts.
- 16:9: Display the picture of the sub-screen with an aspect ratio of 16:9.
- Screen Fit: Display the picture of the sub-screen with the original aspect ratio without cutting anything off.
- The function may not be supported depending on the ports provided with the product.
- Changing the screen size is available when the following conditions are satisfied.
  - The input source is 480p, 576p, 720p, or 1080p and product can display normally (Not every model can support all of these signals.).
  - This can only be set when the external input is connected through HDMI/DP and PC/AV Mode is set to AV.

## Contrast

### PBP Mode (available in PBP mode(Screen Size ))

Adjust the contrast level for each screen.

### PIP Mode (available in PIP mode(Screen Size / / ))

Adjust the contrast level for sub-screen.

## ADJUSTING OSD (On Screen Display) SETTINGS

Function Key Guide →  → On Screen Display

### Transparency

Set the transparency for the menu windows.

### Position

- **H-Position** Move the menu position to the left or right.
- **V-Position** Move the menu position up or down.

### Language

Set the menu language.

- A change to the language setting will only be applied to the onscreen menu display.


- It will not be applied to other functions on your PC.

## Display Time

The OSD menu will automatically disappear if the menu is not used for a specified period of time.


Display Time is a function to specify the time which you want the OSD menu to disappear.

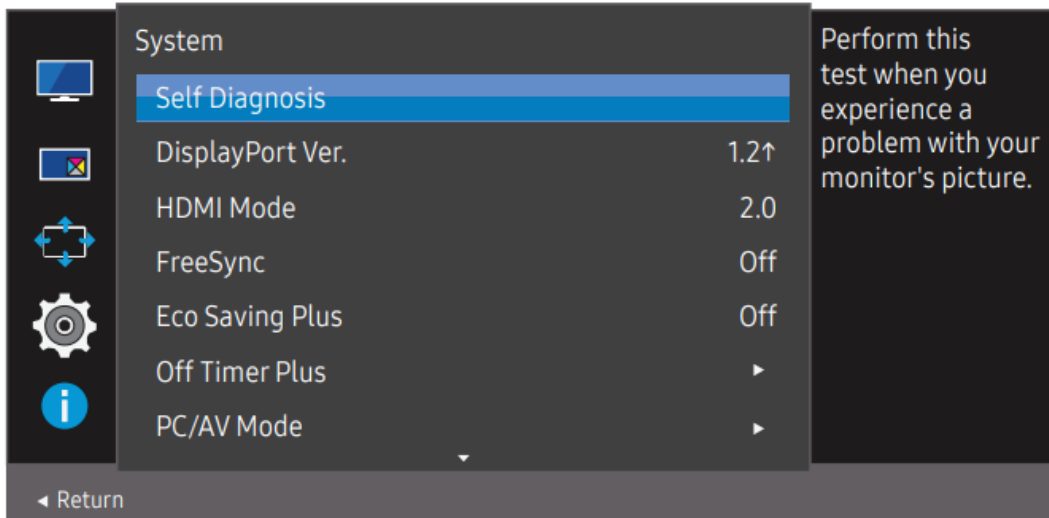
## SETUP AND RESET

Function Key Guide →  → System

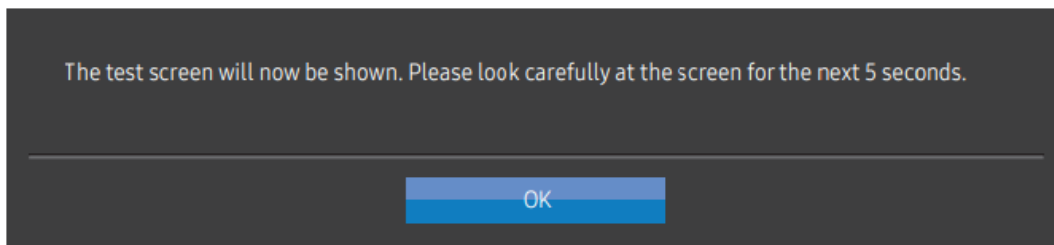
### Self Diagnosis

— Not available when PIP/PBP Mode is set to On.

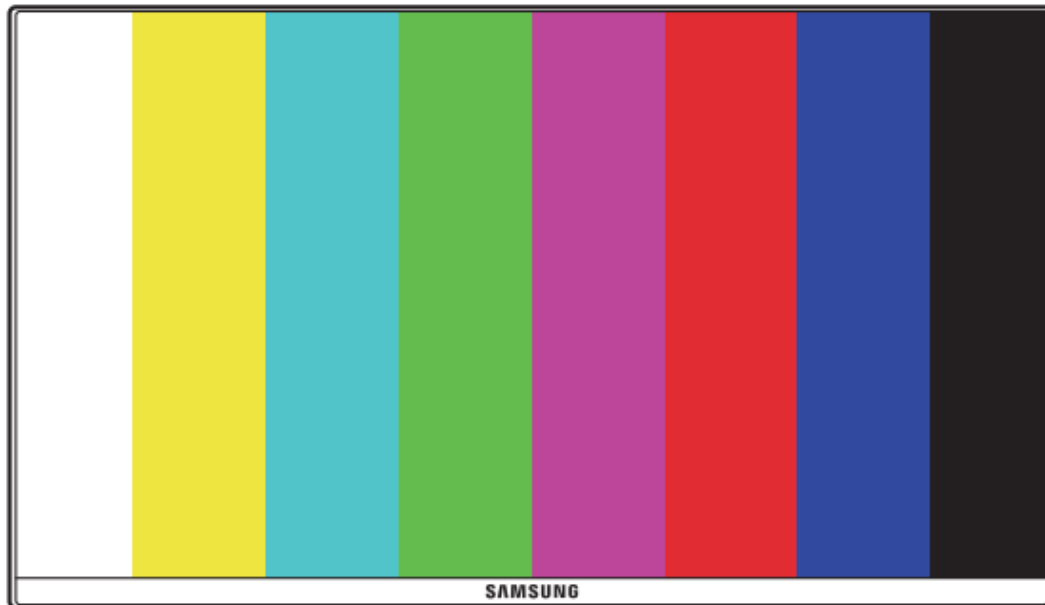
1. Use the Function Key Guide and go to  → System → Self Diagnosis.



2. Select OK when the following screen is prompted.

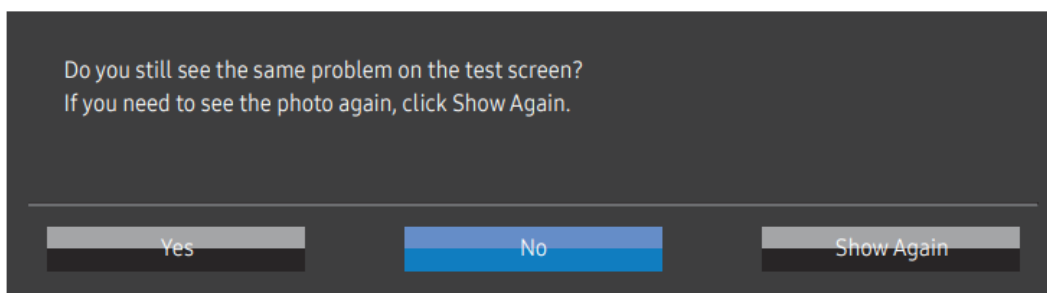


- Review the test screen.

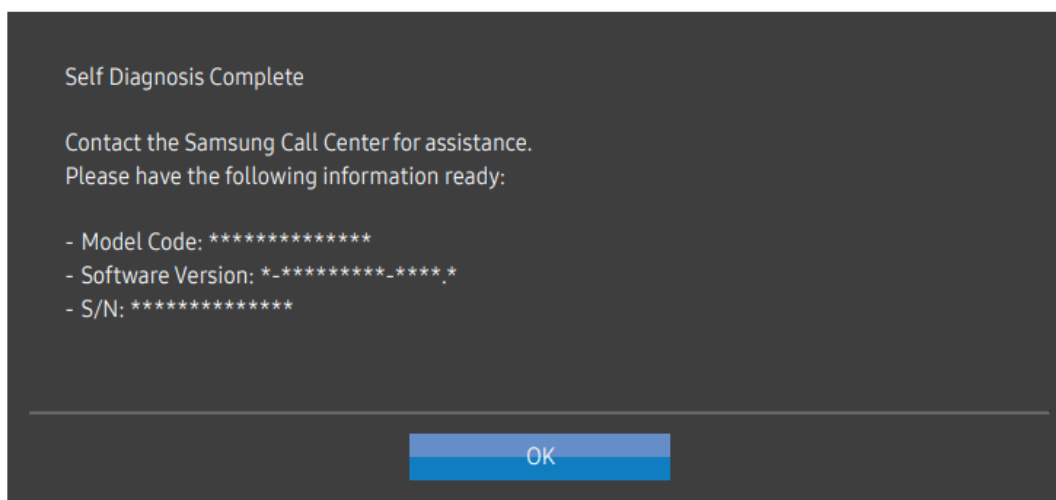


- Never turn off the power nor change the input source during self diagnosis. If possible, try not to interrupt testing.

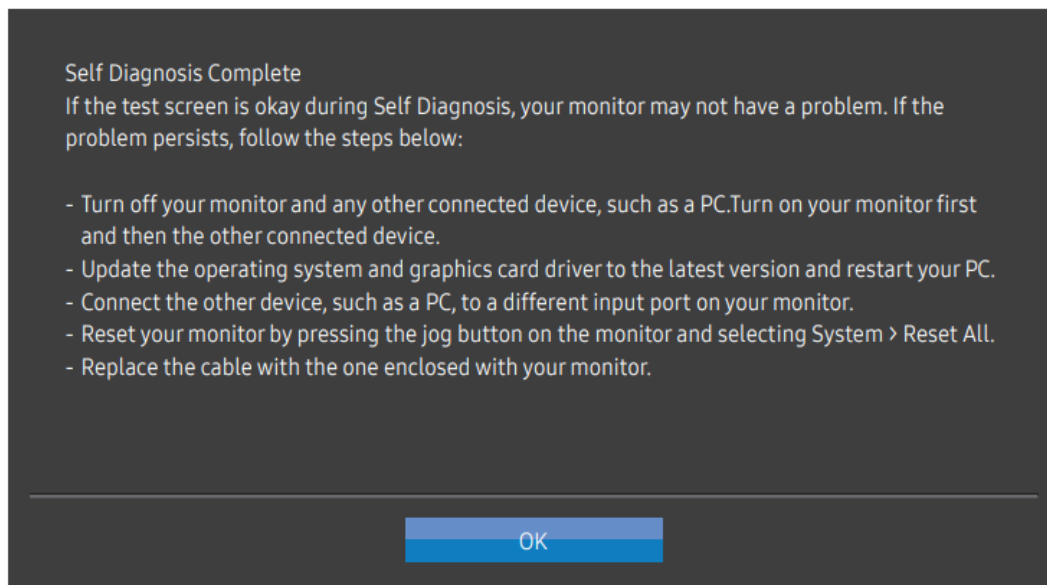
3. Base on the test result, select Yes / No / Show Again.



- You will see the following screen when you select Yes.




- You will see the following screen when you select No.




## DisplayPort Ver.

Select the DisplayPort version to use.

- Incorrect settings may cause the screen to go blank. If this occurs, check the device specifications.
- If the product (when set to DisplayPort) is displaying the message Check the cable connection and the settings of the source device. press the JOG button to display the Function Key Guide screen and then select  → System → DisplayPort Ver. → 1.1 or 1.2↑.

## HDMI Mode

Select the HDMI mode to use.

- The supportable device and resolution may differ depending on its version.
- When the version is changed, the screen may blink.
- If you set the HDMI Mode to 1.4, some high resolutions may not be supported because of bandwidth limitation of the HDMI 1.4 protocol.
- When the setting is not appropriate, a blank screen may appear. In this case, check the specifications of the device.
- This menu is not available when PIP/PBP Mode is set to On and the Screen Size is set to  (PBP Mode).

## FreeSync

FreeSync technology is solution that eliminates screen tearing without all the usual lag and latency.

This feature will eliminate screen tearing and lag during game play. Improve your gaming experience.

The displayed FreeSync menu items on the monitor may vary, depending on the monitor model and compatibility with the AMD graphics card.

- Off: Disable FreeSync.
- On: Turn on the AMD graphics cards' FreeSync function. You may experience intermittent flickers when playing some games.

Apply the optimum resolution when using FreeSync.

### **The refresh rate setting method please refer to Q & A → How can I change the frequency?**

- The FreeSync function is only enabled in HDMI or DisplayPort mode. Use the HDMI/DP cable provided by the manufacturer when using FreeSync.
- Not available when PIP/PBP Mode is set to On.

If you use the FreeSync function while playing a game, the following symptoms may occur:

- The screen may flicker depending on the type of graphics card, the game option settings, or the video being played. Try the following actions: decrease the game setting values, change the current FreeSync mode to Off, or visit the AMD website to check your graphics driver's version and update it with the latest one.
- While you are using the FreeSync function, the screen may flicker due to variation of the output frequency from the graphics card.
- The response rate during the game may fluctuate depending on the resolution. A higher resolution generally decreases the response rate.
- The sound quality of the monitor may be degraded.
  - If you encounter any issues when using the function, contact the Samsung Service Centre.
  - If you change the screen resolution while the function is On, the screen may intermittently blank out due to the graphics card. Set FreeSync to Off and change the resolution.
  - The function is unavailable in the devices (e.g. AV devices) that have no AMD graphics card. If the function is applied, the screen may malfunction.

### **The models in the Graphics Cards list supports FreeSync**

FreeSync can only be used with specific AMD graphics card models. Refer to the following list for supported graphics cards:

Make sure to install the latest official graphics drivers from AMD that support FreeSync.

- For additional AMD graphics card models that support the FreeSync feature, visit the official AMD website.
- Select FreeSync Off if you are using a graphics card from a different manufacturer.

- When applying the FreeSync function via the HDMI cable, it may fail to work due to the bandwidth limitation of certain AMD graphics card.

<ul style="list-style-type: none"> <li>• Radeon™ RX Vega series</li> <li>• Radeon™ RX 500 series</li> <li>• Radeon™ RX 400 series</li> <li>• Radeon™ R9/R7 300 series (excluding R9 370/X, R7 370/X, R7 265)</li> </ul>	<ul style="list-style-type: none"> <li>• Radeon™ Pro Duo (2016 edition)</li> <li>• Radeon™ R9 Nano series</li> <li>• Radeon™ R9 Fury series</li> <li>• Radeon™ R9/R7 200 series (excluding R9 270/X, R9 280/X)</li> </ul>
---	---

## Eco Saving Plus

Reduce energy consumption compared to consumption at the maximum brightness level.


- This option is not available when SAMSUNG **MAGICBright** is in Dynamic Contrast mode.
- This menu is not available when Game Mode is enabled.
- This menu is not available when Eye Saver Mode is enabled.
- Not available when PIP/PBP Mode is set to On.
  - Off: Deactivate the Eco Saving Plus function.
  - Auto: The power consumption will automatically be reduced by about 10% over the current setting. (The reduction of power consumption depends on the customer screen brightness condition.)
  - Low: Saves up to 25 % energy compared to the maximum brightness.
  - High: Saves up to 50 % energy compared to the maximum brightness.

## Off Timer Plus

### Configuring Off Timer

Off Timer: Turn on Off Timer mode.

Turn Off After: The off timer can be set within a range of 1 to 23 hours. The product will automatically power off after the specified number of hours.

- This option is only available when Off Timer is set to On.
- For products for the market in some regions, the Off Timer is set to automatically activate 4 hours after the product powers on. This is done in accordance with power supply regulations. If you do not want the timer to activate, go to  → System → Off Timer Plus and set Off Timer to Off.

### Configuring Eco Timer

Eco Timer: Turn on Eco Timer mode.


Eco Off After: The Eco Timer can be set between 10 and 180 minutes. The product will automatically power off after the specified time has elapsed.

- This option is only available when Eco Timer is set to On.

## PC/AV Mode

Set PC/AV Mode to AV. The picture size will be enlarged.

This option is useful when you view a movie.

- Set to PC when connected to a PC.
- Set to AV when connected to an AV device.
  - Products with a display area of 16:9 or 16:10 are only supported.
  - If the product is in HDMI, DisplayPort mode and the screen says Check the cable connection and the settings of the source device. press the JOG button to display the Function Key Guide screen and then select  → System → PC/AV Mode → HDMI, DisplayPort → PC or AV.

## Source Detection

Select either Auto or Manual as the method to recognise input source.

- Not available when PIP/PBP Mode is set to On.

## Key Repeat Time

Control the response rate of a button when the button is pressed.

Acceleration, 1 sec, or 2 sec can be selected. If No Repeat is selected, a command responds only once when a button is pressed.

## Power LED On

Configure the settings to enable or disable the power LED located at the lower part of the product.

- Working: The power LED is on when the product is turned on.
- Stand-by: The power LED is on when the product is turned off.

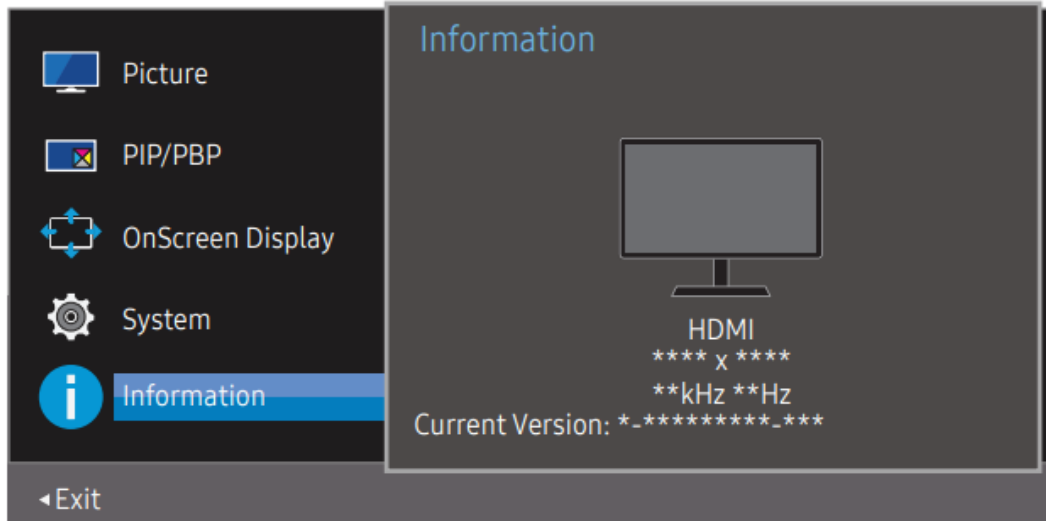
## Reset All

Return all the settings for the product to the default factory settings.

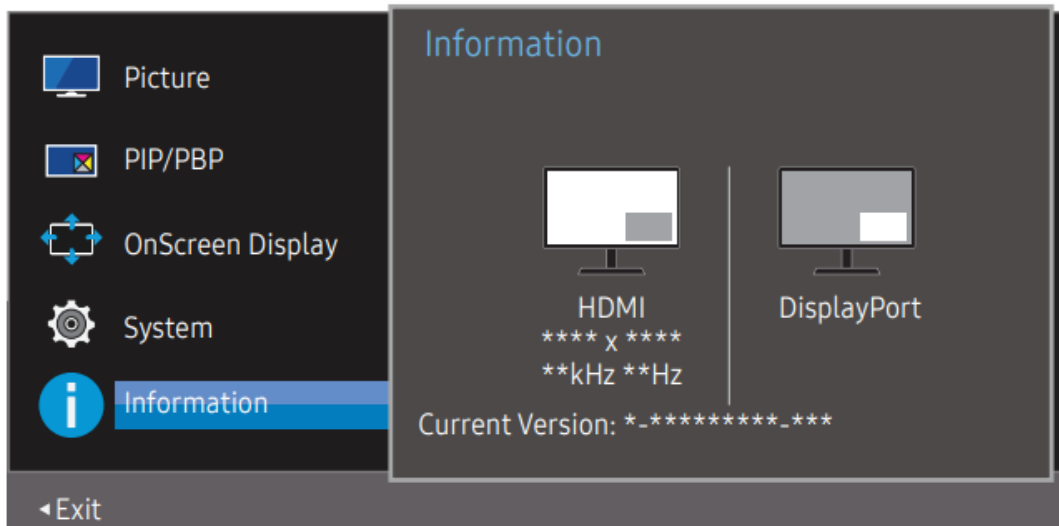
# INFORMATION

## Information

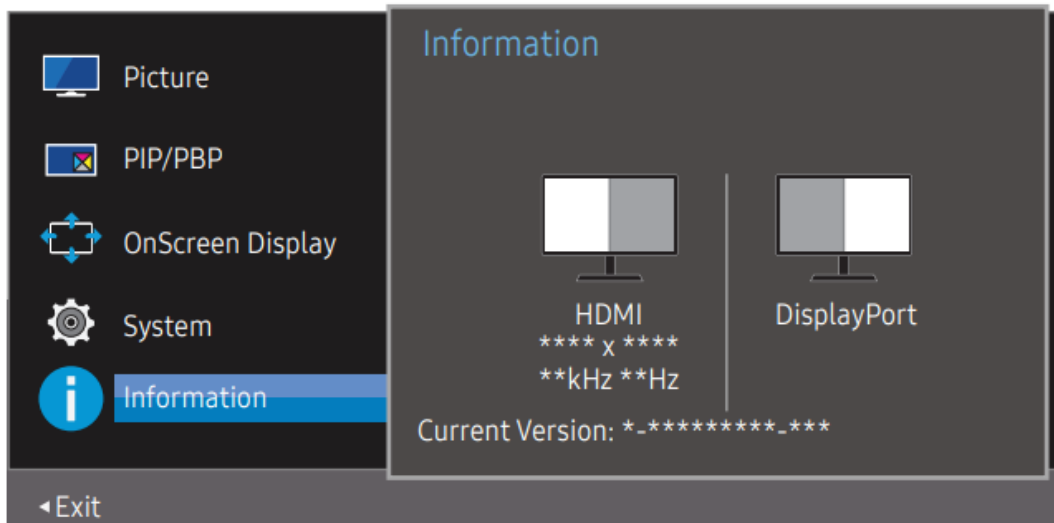
View the current input source mode, frequency and resolution that are in use and the current product version.



## PIP



## PBP



## INSTALLING THE SOFTWARE

### Easy Setting Box



Easy Setting Box enables users to use the product by partitioning multiple sections.

To install the latest version of Easy Setting Box, download it from the Samsung website at <http://www.samsung.com>.

- The software may not work properly if you do not restart the PC after the installation.
- The Easy Setting Box icon may not appear depending on the PC system and the product specifications.
- If the shortcut icon does not appear, press the F5 key.

### Restrictions and Problems with the Installation

The Easy Setting Box installation may be affected by the Graphics Card, Motherboard and the Networking Environment.

### Upgrade by downloading the firmware from the website

Visit the Samsung website at <http://www.samsung.com>, enter the product model and download the firmware file.

- For details on how to upgrade, refer to the upgrade guidance file provided at the website.

## System Requirements


OS	Hardware
<ul style="list-style-type: none"><li>• Windows 7 32Bit/64Bit</li><li>• Windows 8 32Bit/64Bit</li><li>• Windows 8.1 32Bit/64Bit</li><li>• Windows 10 32Bit/64Bit</li></ul>	<ul style="list-style-type: none"><li>• At least 32MB of memory</li><li>• At least 60MB of free space on the hard disk drive</li></ul>

## TROUBLESHOOTING

### Installation issue

PROBLEM	SOLUTION
The screen keeps switching on and off.	Check the cable connection between the product and PC, and ensure the connectors are locked.
Blank spaces are found on all four sides of the screen when an HDMI cable is connected to the product and PC.	<p>The blank spaces found on the screen have nothing to do with the product.</p> <p>Blank spaces on the screen are caused by the PC or graphics card. To resolve the problem, adjust the screen size in the HDMI or DVI settings for the graphics card.</p> <p>If the graphics card settings menu does not have an option to adjust the screen size, update the graphics card driver to the latest version.</p> <p>Please contact the graphics card or PC manufacturer for further details about how to adjust the screen settings.)</p>
The power plug cannot be removed from the power adapter.	<p>Do not remove the power plug after assembly.</p> <p>— The power plug may not be provided, depending on the model</p>

### Screen issue

PROBLEM	SOLUTION
The power LED is off. The screen will not switch on.	<p>Check that the power cable is connected properly.</p> <p>If a problem occurs with the product screen, run Self Diagnosis to check that the product is working properly</p>
The message Check the cable connection and the settings of the source device. appears.	<p>Check that the cable is properly connected to the product.</p> <p>Check that the device connected to the product is powered on.</p> <p>If the product is in HDMI or DisplayPort mode, press the JOG button to display the Function Key Guide screen and select the  icon.</p>
Not Optimum Mode is displayed.	<p>This message appears when the signal from the graphics card exceeds the maximum resolution or frequency for the product.</p> <p>Change the maximum resolution and frequency to suit the product performance, referring to Standard Signal Mode Table</p>
The images on the screen look distorted.	Check the cable connection to the product.
The screen is not clear. The screen is blurry.	<p>Remove any accessories (video extension cable, etc.) and try again.</p> <p>Set the resolution and frequency to the recommended level.</p>
The screen appears unstable and shaky. There are shadows or ghost images left on the screen.	Check that the resolution and frequency for the PC are within the range of resolution and frequency compatible with the product. Next, if required, change the settings, referring to Standard Signal Mode Table in this manual and the Information menu on the product.
The screen is too bright. The screen is too dark.	Adjust Brightness and Contrast.
	Change the Color settings.

PROBLEM	SOLUTION
Screen colour is inconsistent.	
The colours on the screen have a shadow and are distorted.	Change the Color settings.
White does not really look white.	Change the Color settings.
There is no image on the screen and the power LED blinks every 0.5 to 1 second.	The product is operating in power-saving mode. Press any key on the keyboard or move the mouse to return to normal operating mode
Text is blurry.	If using a Windows OS (e.g. Windows 7, Windows 8, Windows 8.1 or Windows 10): Go to Control Panel → Fonts → Adjust ClearType text and change Turn on ClearType.
Video playback is choppy.	Playback of high-definition large video files can be choppy. This may be because the video player is not optimised for the PC resource.  Try playing the file on another video player.

## Sound issue

---

PROBLEM	SOLUTION
There is no sound.	<p>Re-check the condition of the connected audio cable and/or adjust the volume.</p> <p>Check the volume.</p> <p>Check whether audio is set to mute</p>
The volume is too low.	<p>Adjust the volume.</p> <p>If the volume is still low after turning it up to the maximum level, adjust the volume on your PC sound card or software programme.</p>
Video is available but there is no sound.	<p>Sound cannot be heard if an HDMI-DVI cable is used to connect the input device.</p> <p>Connect the device using an HDMI cable or a DP cable.</p>

## Source device issue

---

A beeping sound is heard when my PC is booting.	If a beeping sound is heard when your PC is booting, have your PC serviced.
---	---

## Q & A

---

### How can I change the frequency?

Set the frequency on your graphics card.

- Windows 7: Go to Control Panel → Appearance and Personalization → Display → Screen Resolution → Advanced settings → Monitor, and adjust Screen Refresh Rate under Monitor settings.
- Windows 8(Windows 8.1): Go to Settings → Control Panel → Appearance and Personalization → Display → Screen Resolution → Advanced settings → Monitor, and adjust Refresh rate under Monitor settings.
- Windows 10: Go to Settings → System → Display → Advanced display settings → Display adapter properties → Monitor, and adjust Screen refresh rate under Monitor settings.

## How can I change the resolution?

- Windows 7: Go to Control Panel → Appearance and Personalization → Display → Screen Resolution → Adjust Resolution.
- Windows 8(Windows 8.1): Go to Settings → Control Panel → Appearance and Personalization → Display → Adjust Resolution, and adjust the resolution.
- Windows 10: Go to Settings → System → Display → Advanced display settings, and adjust the resolution.

## How do I set power-saving mode?

- Windows 7: Go to Control Panel → Appearance and Personalization → Personalization → Screen Saver Settings → Power options or BIOS SETUP on the PC.
- Windows 8(Windows 8.1): Go to Settings → Control Panel → Appearance and Personalization → Personalize → Screen Saver Settings → Power options or BIOS SETUP on the PC.
- Windows 10: Go to Settings → Personalization → Lock screen → Screen timeout settings → Power & sleep or BIOS SETUP on the PC.

### Warning

This content is compiled from multiple sources and is provided for reference purposes only. It may not be complete or fully applicable to all situations. If you are unable to resolve your issue, please contact the product manufacturer or an authorized service provider for official support.