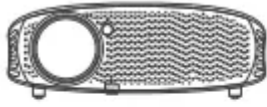


User manual Projector

PACKING LIST



LEISURE 510



Carrying Bag



Remote



User Manual



AV Cable

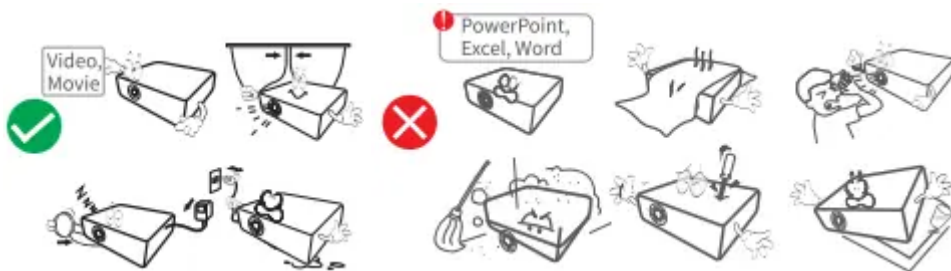


HD Cable

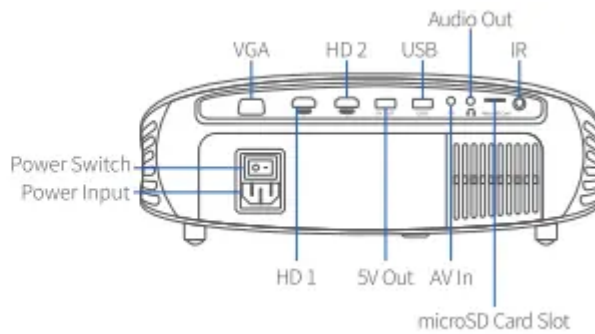
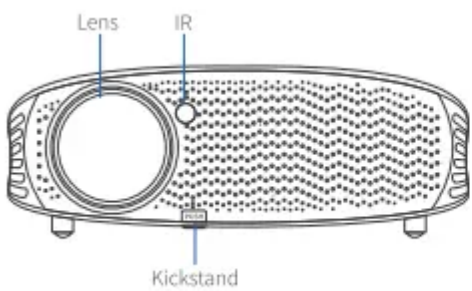


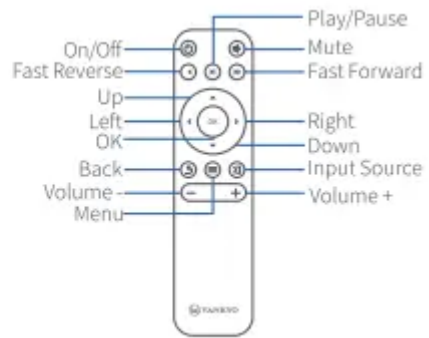
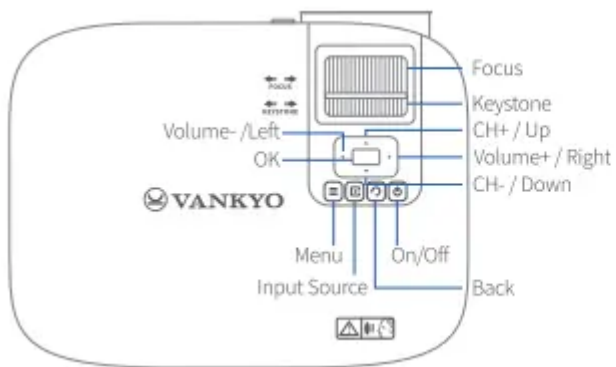
Power Cable

NOTICE

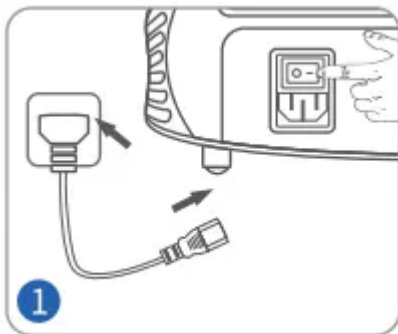


FUNCTION OVERVIEW

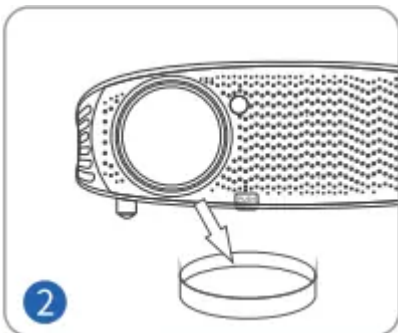




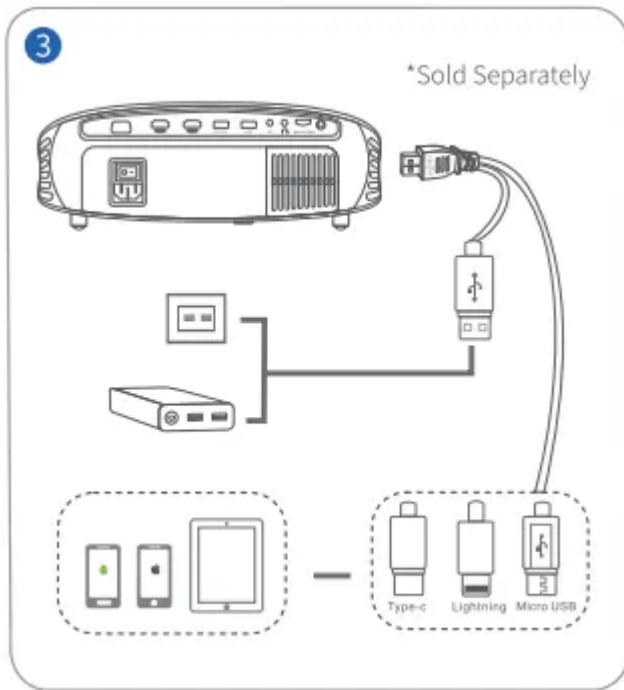
QUICK START



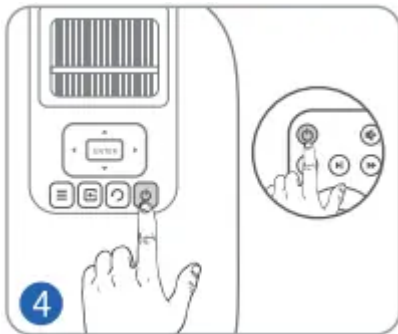
Plug the power cord into an outlet and switch on the Power Switch.



Take off the lens cover.



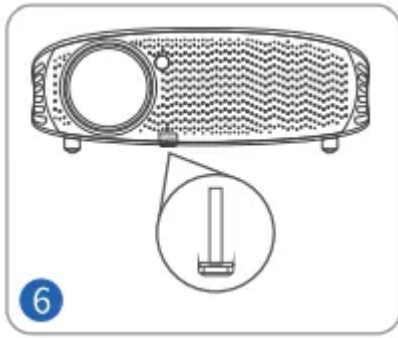
Connect your device to the projector correctly.



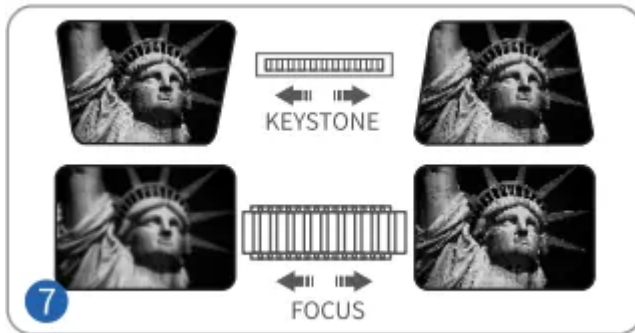
Press the On/Off button to turn on the projector.



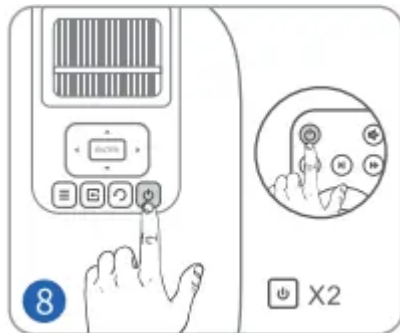
Select the correct input source to project your device.



Adjust the kickstand accordingly.





Adjust the keystone and focus ring to get the best image performance.

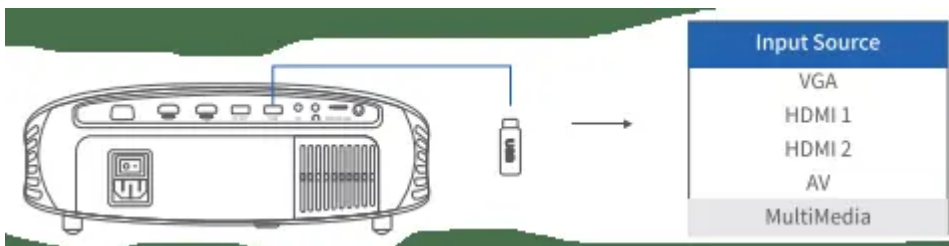


Press the On/Off button twice to turn off the projector.

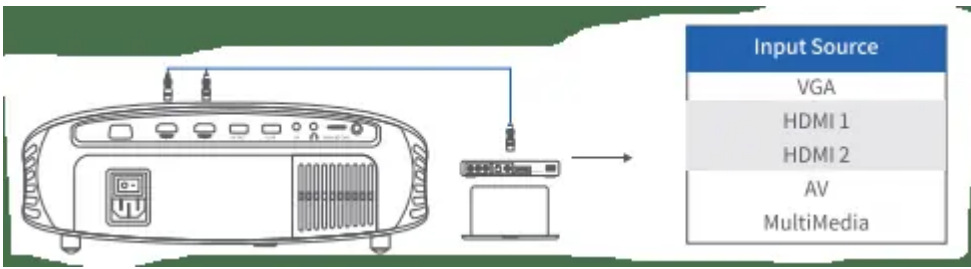
INPUT SOURCE

Press  /  on the projector or remote to enter the interface of Input Source.

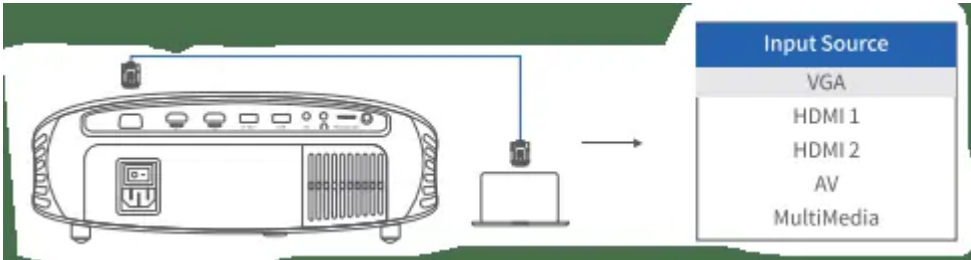
A. Multimedia Connection



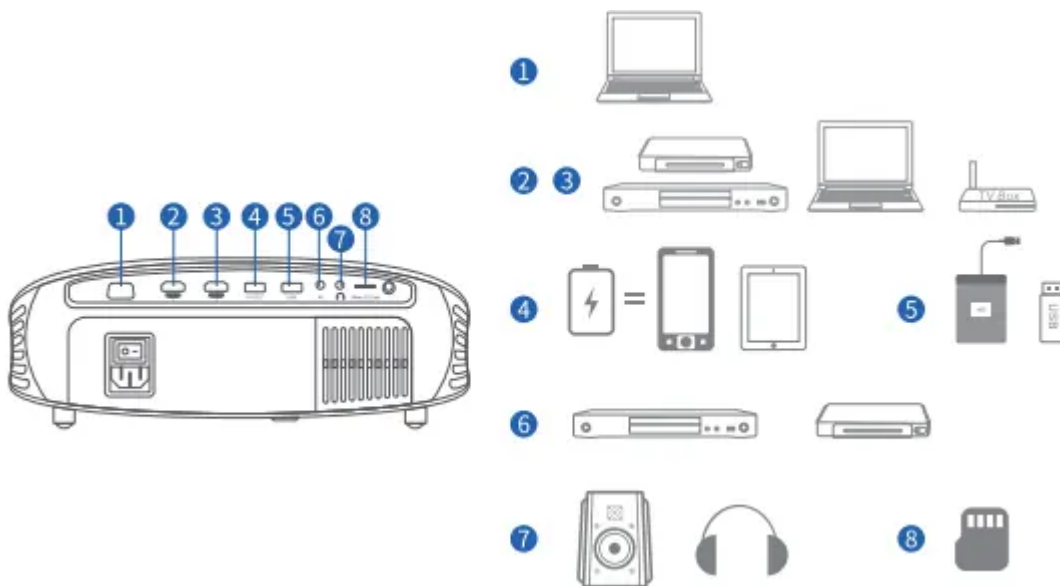
B. HD Connection



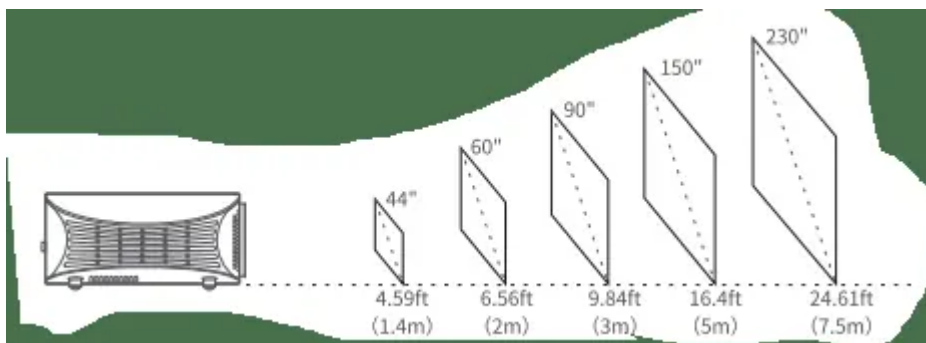
C. VGA Connection



PROJECTOR CONNECTION



PROJECTION DISTANCE & SIZE



The recommended projection screen is around 90 inches with a projection distance of around 9.84ft. Ambient darkness will improve the clarity of the projected images.

SPECIFICATION

Display Technology	LCD	Light Source	LED
Resolution	Native 1280 x 768	Input Signal	576i, 720P, 1080i, 1080P
Installation Type	Front/Rear/Ceiling	Aspect Ratio	4:3/16:9/Auto
Focus	Manual	Keystone	±15°
Speaker	3W/4ohm x 2	Power Supply	AC 100-240V, 50/60Hz
Unit Dimension	311 x 239 x 118mm (12 x 9.4 x 4.6 inch)	Unit Net Weight	2.5kg (5.5lb)
Photo Format Supported	BMP/JPG/PNG	Audio Format Supported	AAC/FLAC/M4A/MP3/OGG/ WAV/WMA
Video Format Supported	ASF/AVI/DAT/DIVX/FIV/MKV/MOV/MP4/ MPG1/RM/RMVB/TRP/TS/VOB/WMV	Ports	VGA Port x 1/HD In x 2/AV In x 1/ USB x 1/5V Out x 1/Audio Out x 1/ microSD x 1
Mounting Screw	M3 Metric	Number of Screws	4

TROUBLESHOOTING GUIDE

1. No Sound

- * Turn Dolby audio off in your device.
- * External speaker is required for VGA cable connection.

2. Blurry Image

- * Adjust focus ring/keystone.
- * Projector and wall/screen must be in effective distance.

3. Remote Unresponsive

- * Make sure remote points at IR receiver directly.
- * Do not cover IR receiver.
- * Try a new pair of AAA batteries.

4. Mobile Connection

iOS: Genuine lightning to HDMI cable

Android: Micro USB to HDMI adapter/Type C to HDMI cable

5. Up Side Down Images

Enter "Menu" on projector remote to flip the projection image.

Warning

This content is compiled from multiple sources and is provided for reference purposes only. It may not be complete or fully applicable to all situations. If you are unable to resolve your issue, please contact the product manufacturer or an authorized service provider for official support.