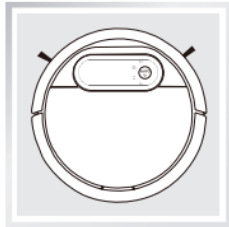


Package Contents and Technical Specifications

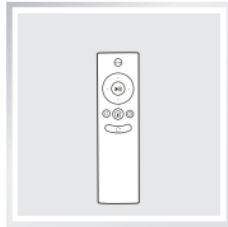
Package Contents



Robot



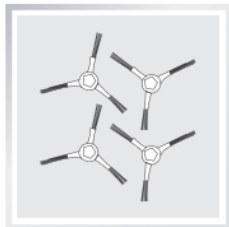
Charging Dock



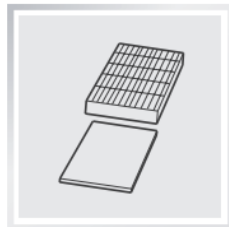
Remote Control with Batteries



Instruction Manual



(4) Side Brushes



Replacement High Efficiency Filter+ Sponge Filter



Quick Start Guide

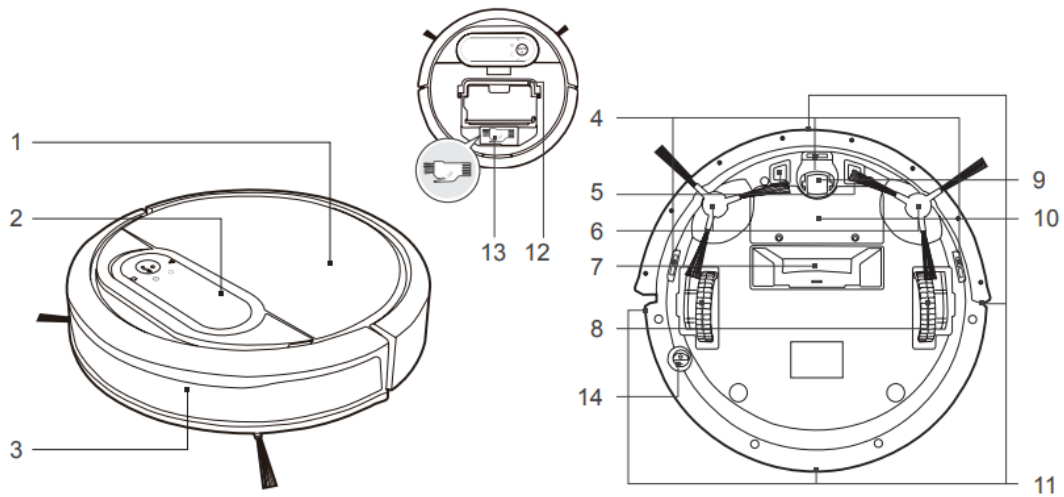
Specifications

Model	DN78		
Working voltage	12V DC	Rated power	20W
Charging Dock Model	CH1465A		
Rated input voltage	100-240V AC	Rated output voltage	20V DC
Rated output current	1A	Rated Power	25W
Remote Control Model	RC1521C	Input voltage	3V DC
Battery	Ni-MH 3000mAh		

* Technical and design specifications may be changed in the course of continuous product improvement

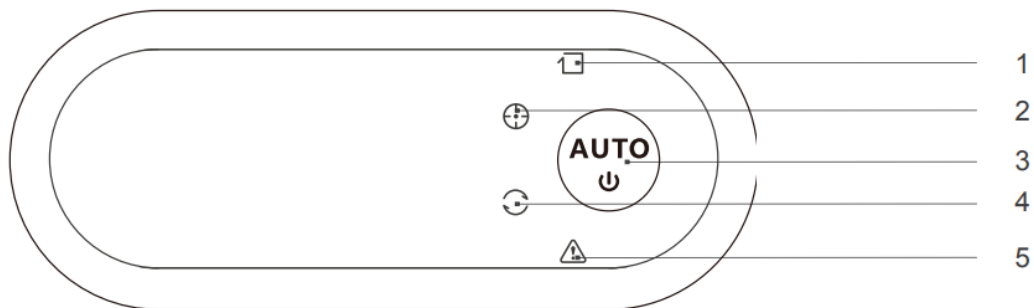
Product Diagram

Robot



1. Top Cover
2. Control Panel
3. Anti-Collision Sensors
4. Anti-Drop Sensors
5. Charging Contacts
6. Side Brushes
7. Suction Intake
8. Driving Wheels
9. Universal Wheel
10. Battery Pack
11. Infrared Receiver for Remote Control
12. Upgrade Port (For Customer Service Only)
13. Multi-function Cleaning Tool
14. Bottom Power Switch

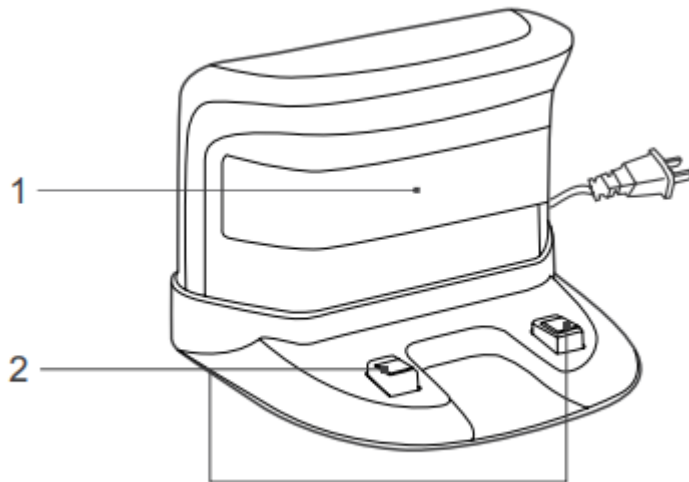
Control Panel



1. Edge Cleaning Mode Indicator Light
2. Spot Cleaning Mode Indicator Light
3. AUTO Mode Button
4. Intelligent Scheduling Indicator Light
5. Alarm Indicator

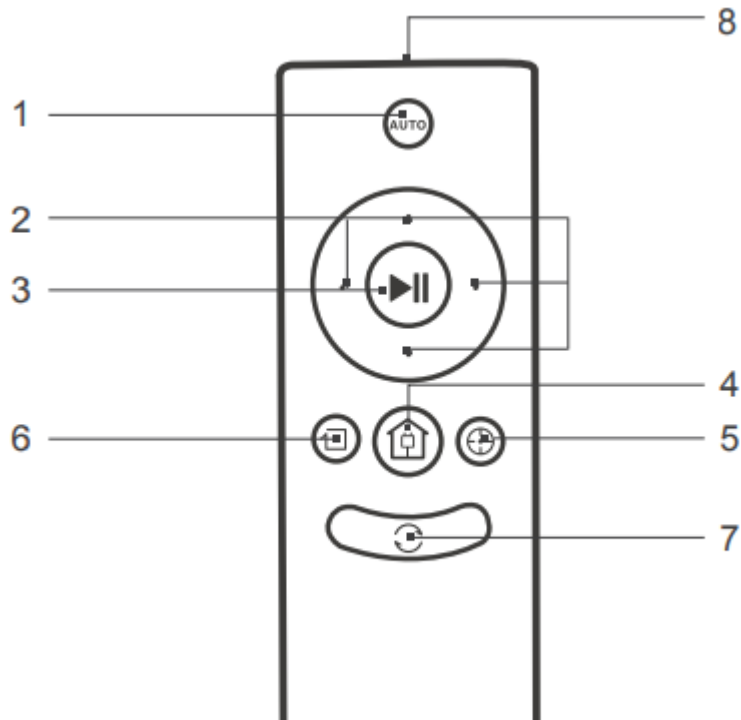


Charging Dock



1. Infrared Signal Generator
2. Charging Dock Pins

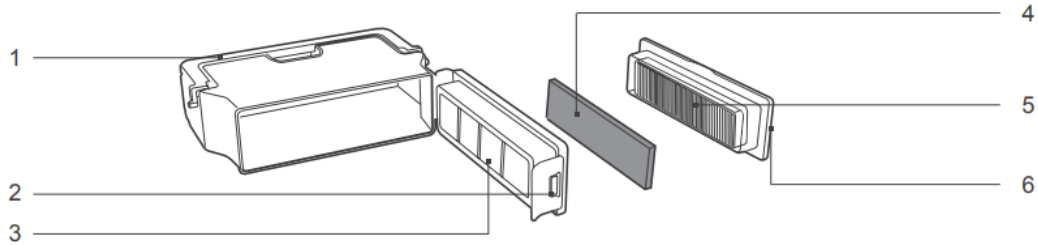
Remote Control



1. AUTO Mode Button
2. Direction Control Buttons
3. START/PAUSE Button
4. Return to Charger Mode Button
5. Spot Cleaning Mode Button

6. Edge Cleaning Mode Button
7. Intelligent Scheduling Button
8. Infrared Emitter

Dust Bin

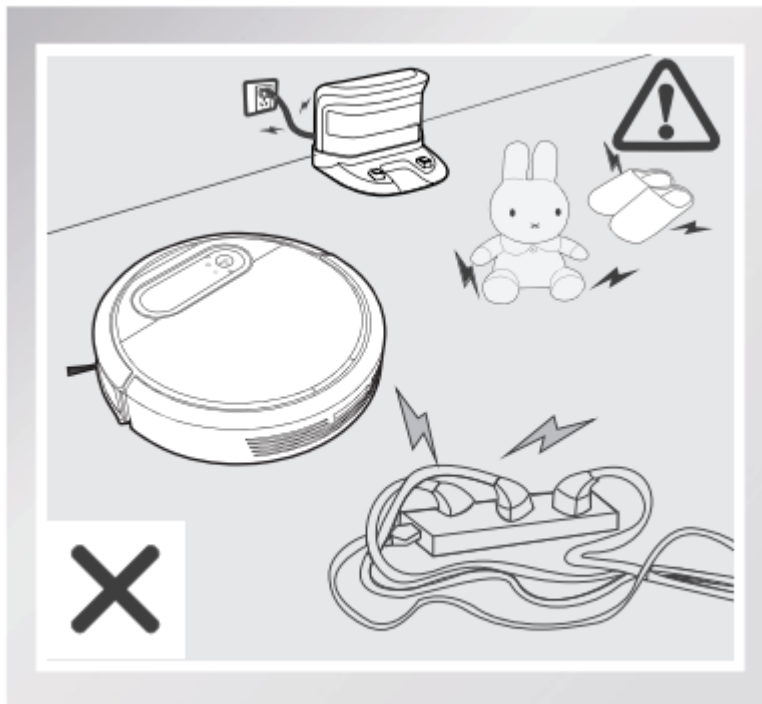


1. Dust Bin Handle
2. Dust Bin Lock
3. Filter Net
4. Sponge Filter
5. High Efficiency Filter
6. Dust Bin Cover

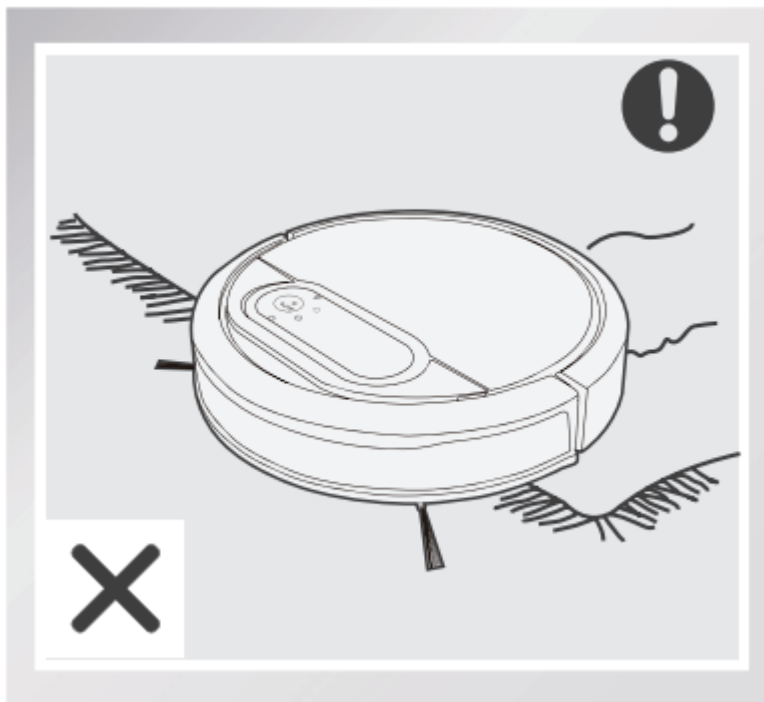
Operating and Programming

Notes before Cleaning

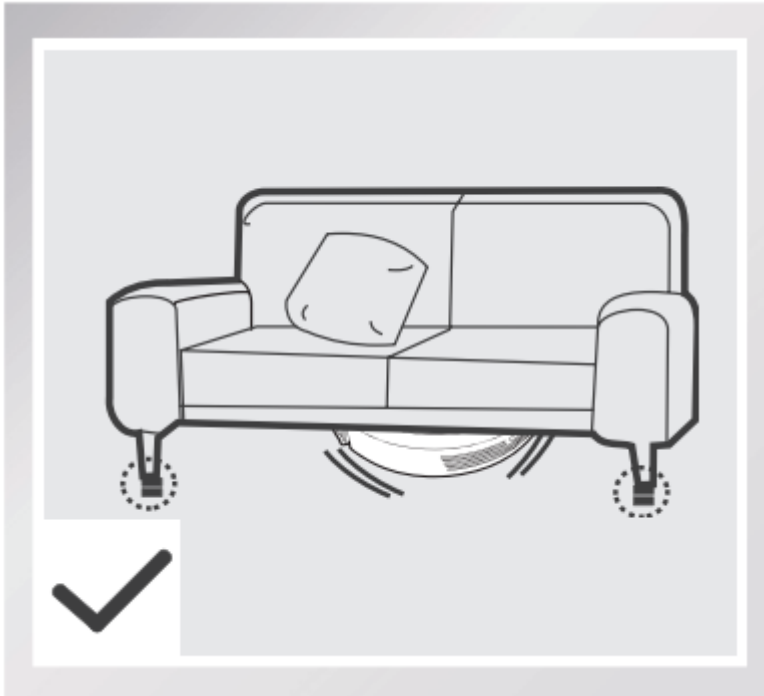
Before operating DEEBOT, take a few moments to survey the area to be cleaned and remove any obstacles.



Remove power cords and small objects from the floor that could entangle the product.

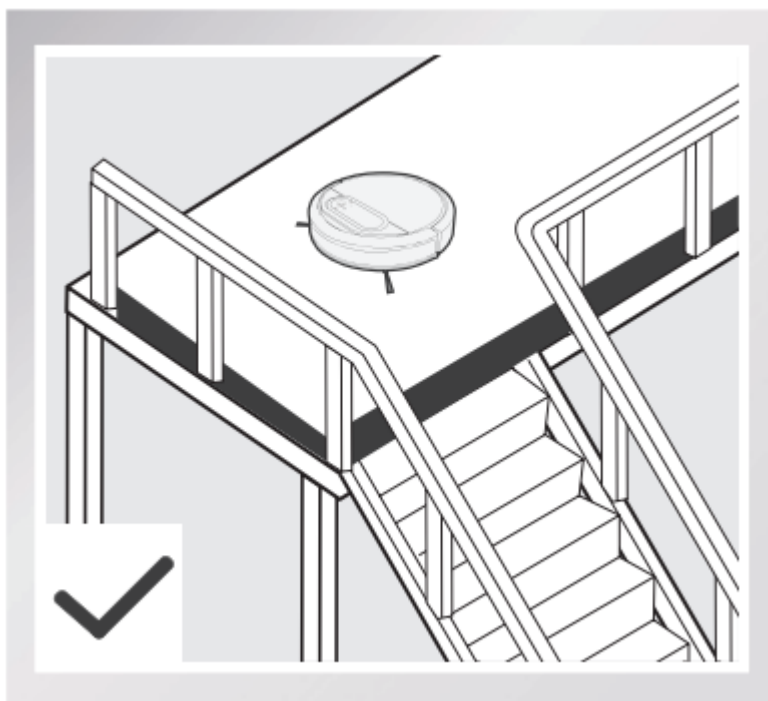


This product cleans bare floors and shortpile carpet. It is not designed to clean longpile or shag carpet.



Please be aware that the robot needs at least a 9 cm (3.5") clearance to clean under furniture without complications.

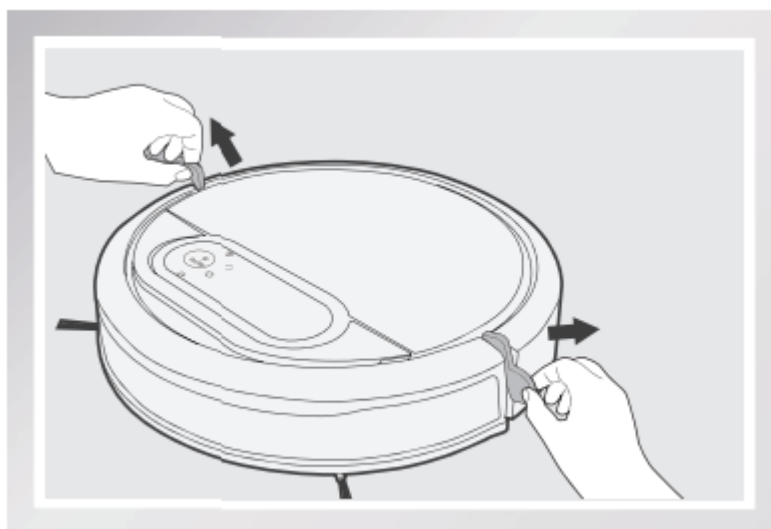




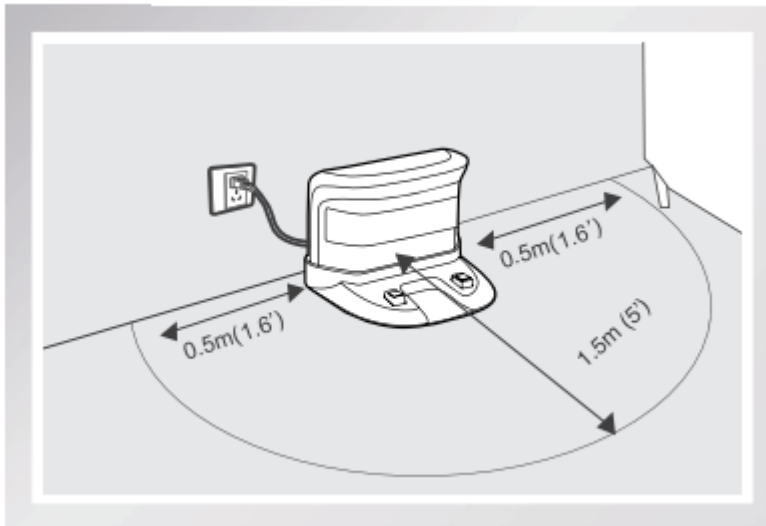
If there is a step or stairs in the cleaning area, please operate DEEBOT to ensure its Anti-Drop Sensors can detect the drop off. It may be necessary to place a physical barrier at the edge of the drop off to keep the unit from falling over the edge.

Quick Start

* Remove the Bumper Rail protection sponges on both sides of the DEEBOT before the first use.

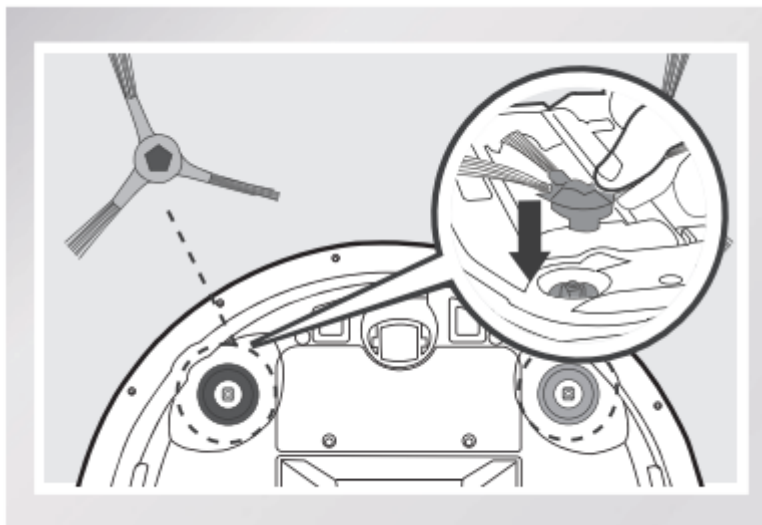


1. Charging Dock Placement



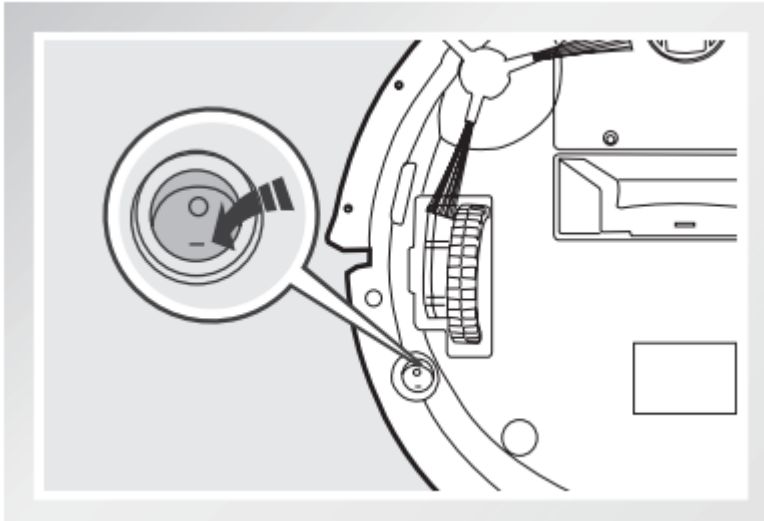
- Place the Charging Dock on a level floor surface against the wall with the base perpendicular to the ground. Keep the immediate area 1.5m (5') in front of the charger and 0.5m (1.6') on both sides of the charger clear of objects and reflective object surfaces.
- Plug the Charging Dock in.

2. Install Side Brushes



- Attach Side Brushes to the bottom of DEEBOT by pressing a brush into each slot with the matching color until it clicks.

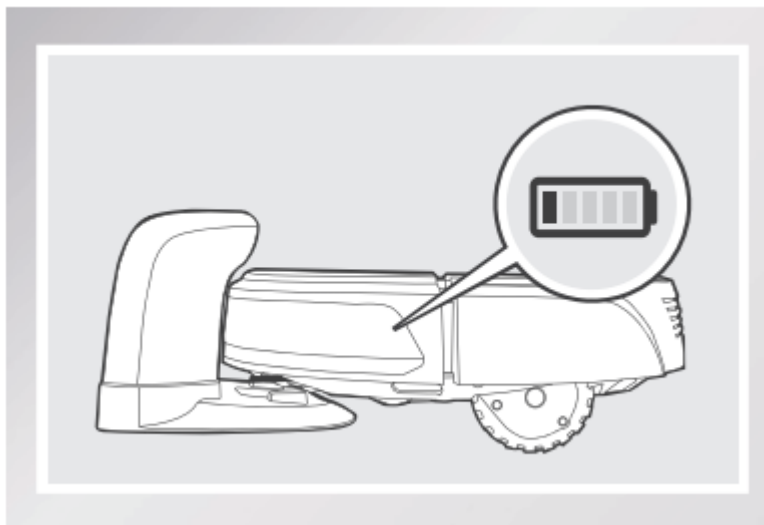
3. Power ON



- Turn the robot's Bottom Power Switch to the ON position. "I"=power ON; "O"=power OFF. DEEBOT is powered ON when the AUTO Mode Button glows a continuous BLUE.

* When DEEBOT is not cleaning, it is suggested to keep it powered ON and charging instead of powered OFF.

4. Charge DEEBOT



- Place DEEBOT on the Charging Dock making sure the Charging Contacts on DEEBOT and the Charging Dock Pins make a connection.
- Charge DEEBOT for at least 4 hours before first use.

* When DEEBOT is not cleaning, it is suggested to keep it powered ON and charging instead of powered OFF. Make sure to turn the robot's Bottom Power Switch to the ON position before charging. ("I"=power ON; "O"=power OFF. The robot's default setting is "O".) DEEBOT

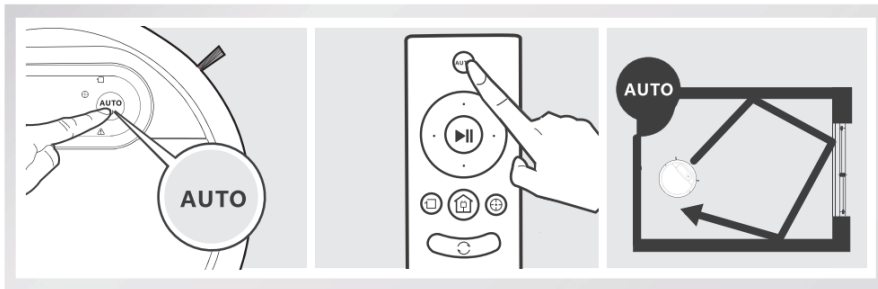
* is powered ON when the AUTO Mode Button glows a continuous BLUE. AUTO Mode Button blinks when DEEBOT is charging.

* AUTO Mode Button stops glowing when DEEBOT is fully charged.

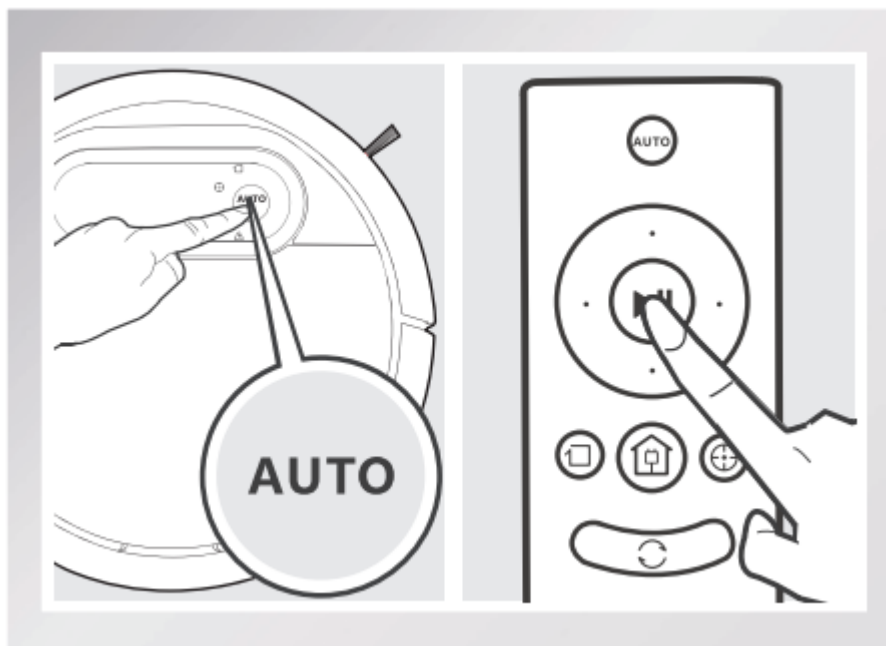
5. Start

- Press the AUTO Mode Button on DEEBOT or on the Remote Control. DEEBOT starts to work immediately in AUTO Cleaning Mode.

* To choose another Cleaning Mode, please refer to section 3.3 Cleaning Mode Selection for details.



6. Pause

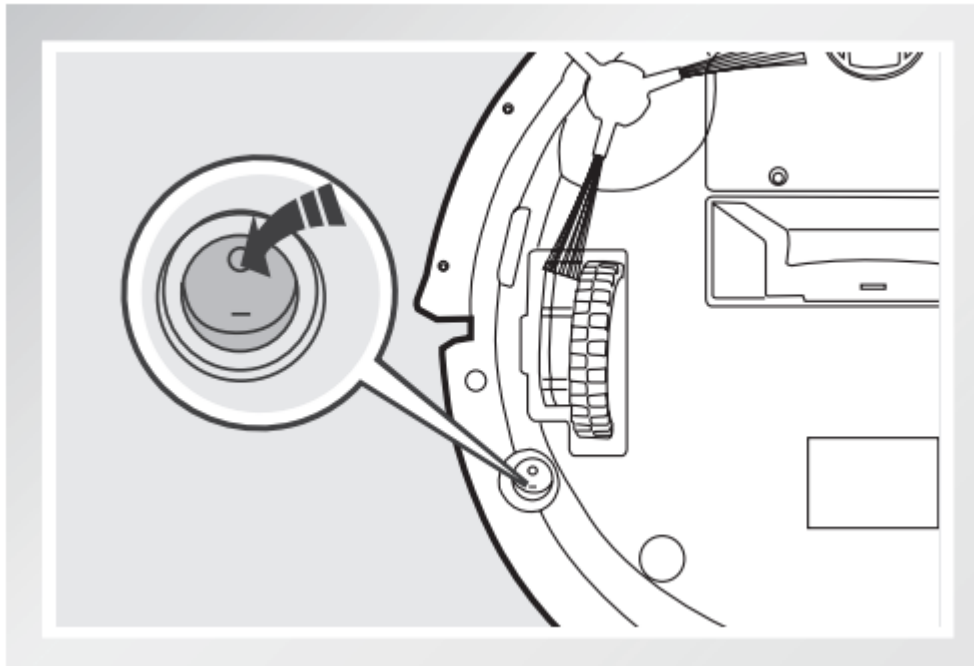


- Pause DEEBOT by pressing the AUTO Mode Button on DEEBOT or the START/PAUSE Button on the Remote Control.

* DEEBOT can be directed to move forward, backward, left and right using the Direction Control Buttons on the Remote Control when it is Paused. DEEBOT does not clean when Paused.

* The AUTO Mode Button on the robot's Control Panel stops glowing after the robot is paused for more than 1 minute. Press AUTO Mode Button on the robot or press any button on the Remote Control to wake up the robot.

7. Power OFF



- Pause DEEBOT. Move the Bottom Power Switch to the OFF position.

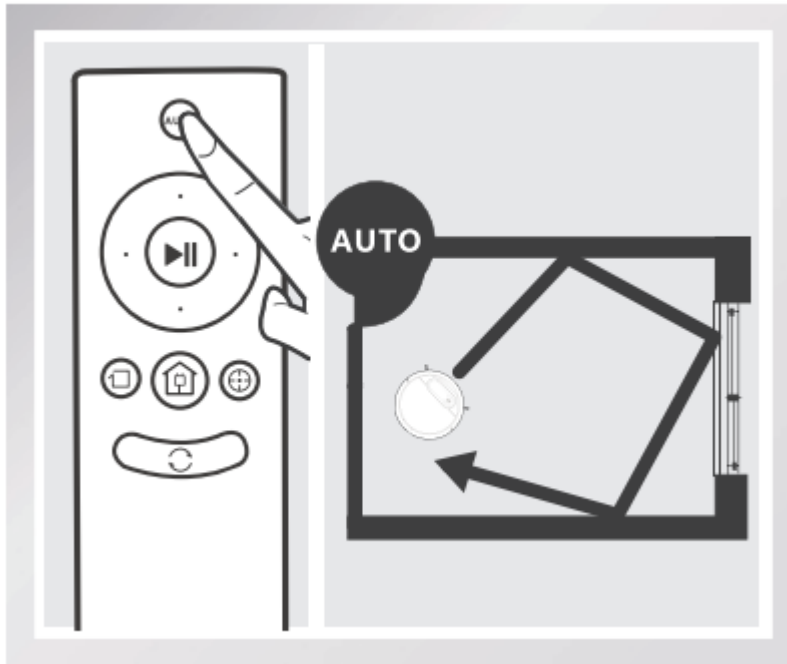
* When DEEBOT is not cleaning, it is suggested to keep it powered ON and charging.

Cleaning Mode Selection

DEEBOT has several Cleaning Modes to choose from to effectively clean different floors. Cleaning Modes are selected with the Remote Control.

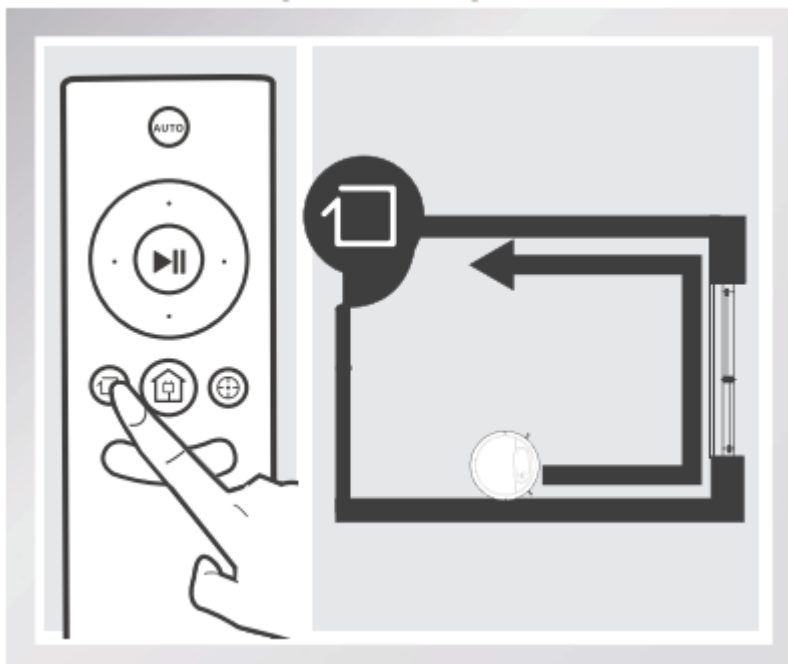
1. AUTO Cleaning Mode

This is the most commonly used mode. In AUTO Cleaning Mode, DEEBOT cleans in a straight line and changes direction when it meets an obstacle.



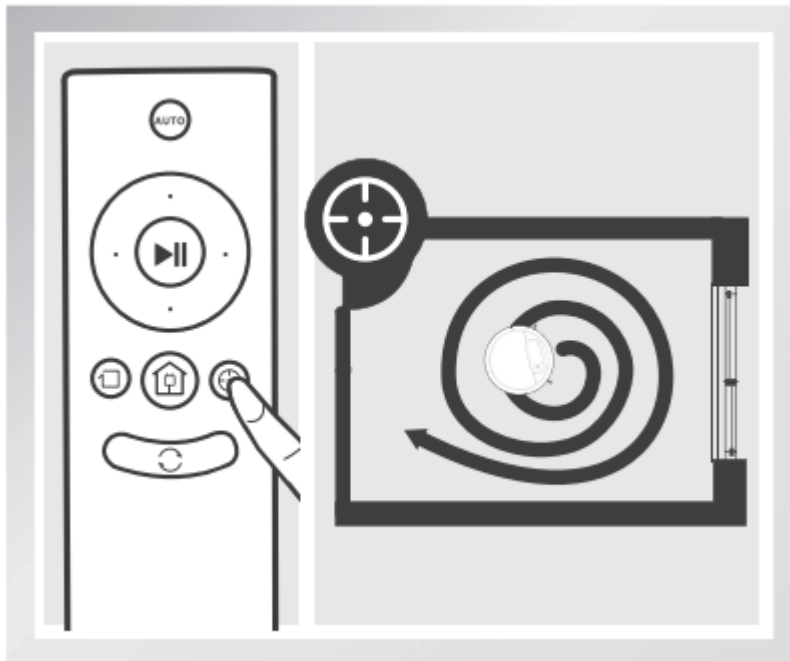
2. Edge Cleaning Mode

This mode is good for cleaning the edges and corners of a room. In Edge Cleaning Mode, DEEBOT cleans along a border (e.g. wall) and returns to the Charging Dock when it completes Edge Cleaning.



3. Spot Cleaning Mode (2-5 minutes)

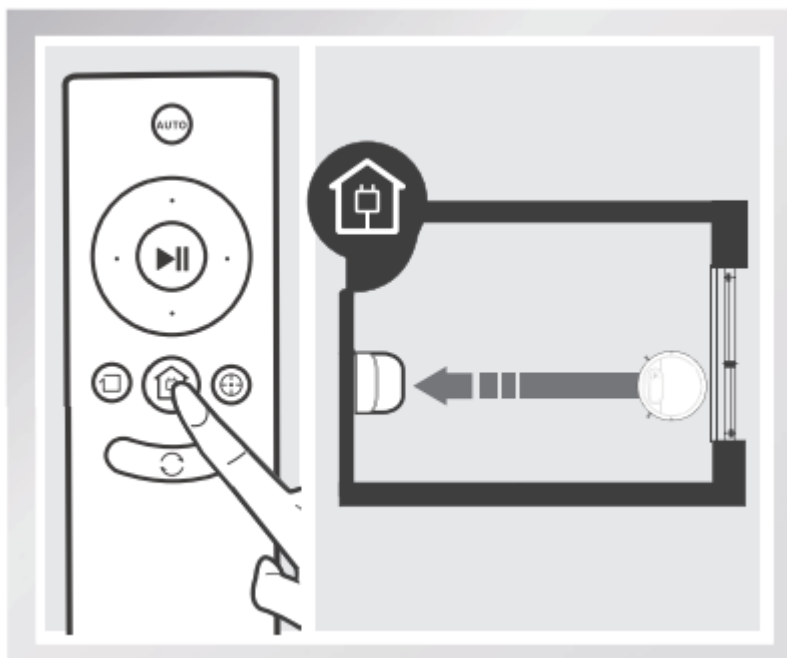
This mode is applicable for an area of highly concentrated dirt or dust. In Spot Cleaning Mode, DEEBOT focuses on a specific area to clean. DEEBOT cleans the area in a spiral pattern and stops when it completes Spot Cleaning



4. Return to Charger Mode

When battery power gets low, DEEBOT automatically switches to Return to Charger Mode and returns to the Charging Dock to recharge itself.

* DEEBOT can also be sent back to the Charging Dock at any time by pressing the Return to Charger Button on the Remote Control.



Intelligent Scheduling

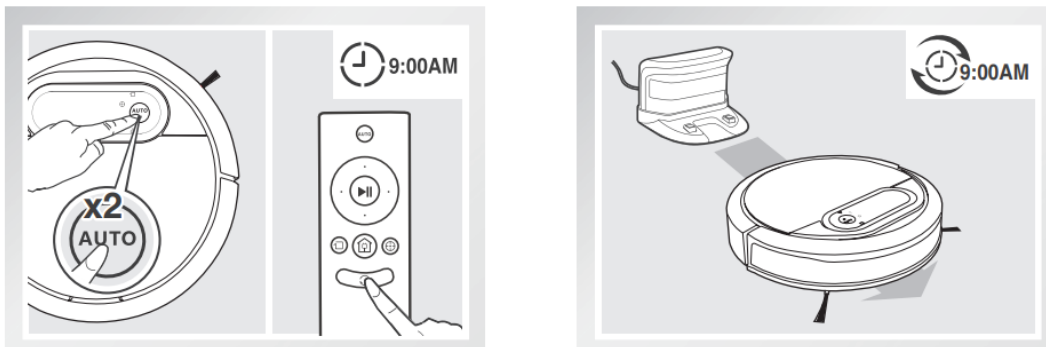
DEEBOT has an Intelligent Scheduling function. DEEBOT can be scheduled to clean once per day at the same time, even If nobody is at home.

* All scheduled cleanings are performed in AUTO Cleaning Mode.

1. Set Intelligent Scheduling

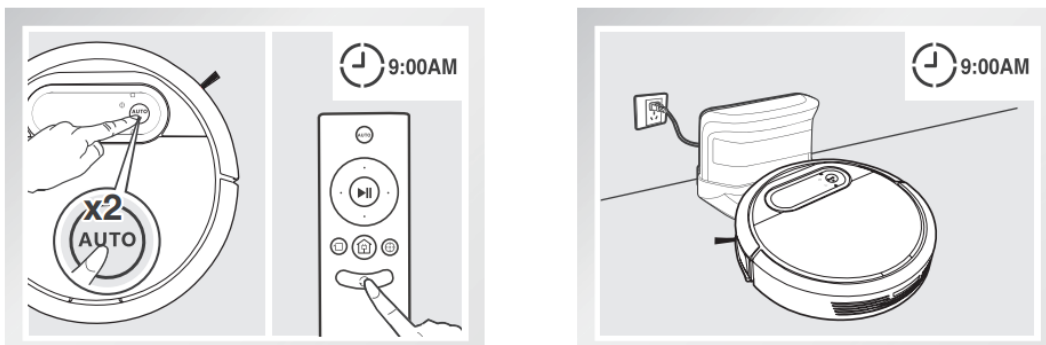
Double-click the AUTO Mode Button on DEEBOT or press the Intelligent Scheduling Button on the Remote Control to set the current time as the scheduled cleaning time. Intelligent Scheduling is set when the robot beeps and the Intelligent Scheduling Indicator Light glows a continuous BLUE. DEEBOT will automatically clean at the set time every day.

For example: Set Intelligent Scheduling successfully at 9:00am, and DEEBOT automatically cleans at 9:00am every day.



2. Cancel Intelligent Scheduling

Double-click the AUTO Mode Button on DEEBOT or press the Intelligent Scheduling Button on the Remote Control. Intelligent Scheduling is cancelled when the robot beeps and the Intelligent Scheduling Indicator Light stops glowing.



- To automatically clean at another time, first cancel the current Intelligent Scheduling, then set Intelligent Scheduling again at the desired time.
- If DEEBOT is powered OFF, Intelligent Scheduling is cancelled.

Alarm Indicator and Sounds

If DEEBOT detects a problem and needs your assistance, it emits alarm beeps and the Alarm Indicator flashes RED.

Alarm Sound	Problems	Solution
One Beep	Driving Wheel Malfunction	Check Driving Wheels for tangled hair or debris and clean as described in section 4 Maintenance.
Three Beeps	Driving Wheel Malfunction	Turn over the robot. Press Driving Wheels to check for a clicking sound. If they do not click, please contact Customer Service.
Four Beeps	Dust Bin Malfunction	Remove the Dust Bin and re-install it properly. If the robot still emits the alarm, please contact Customer Service.
Five Beeps	Low Battery	Manually place the robot on the Charging Dock to charge.
Six Beeps	Side Brush Malfunction	Check Side Brushes for tangled hair or debris and clean as described in section 4 Maintenance.
Seven Beeps	Anti-Drop Sensor Malfunction	Check Anti-Drop Sensors for dust and clean as described in section 4 Maintenance.

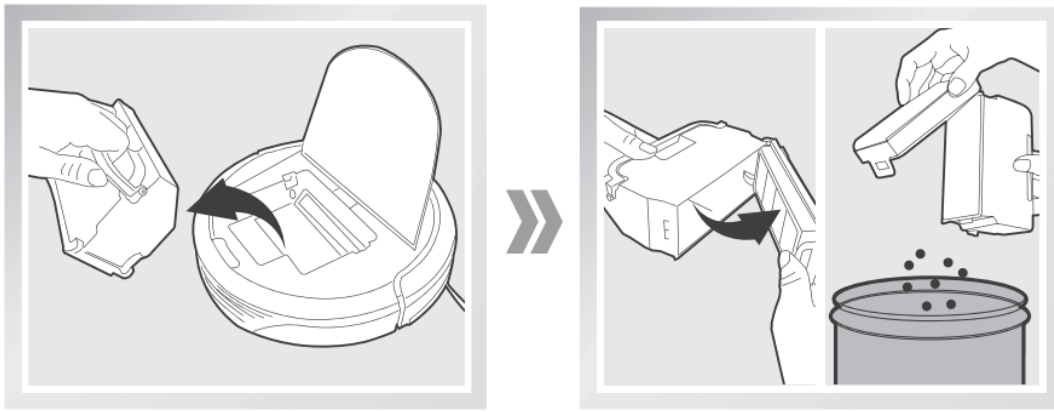
Maintenance

Before performing cleaning and maintenance, power OFF DEEBOT and unplug the Charging Dock.

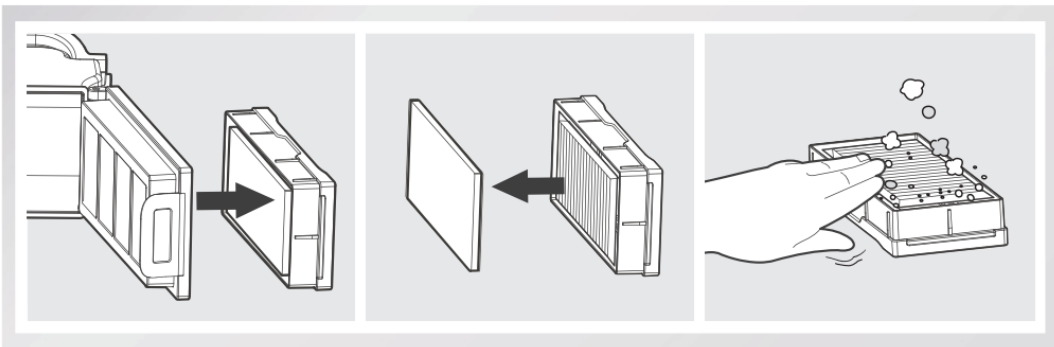
Dust Bin and Filters

Cleaning the Dust Bin and Filters

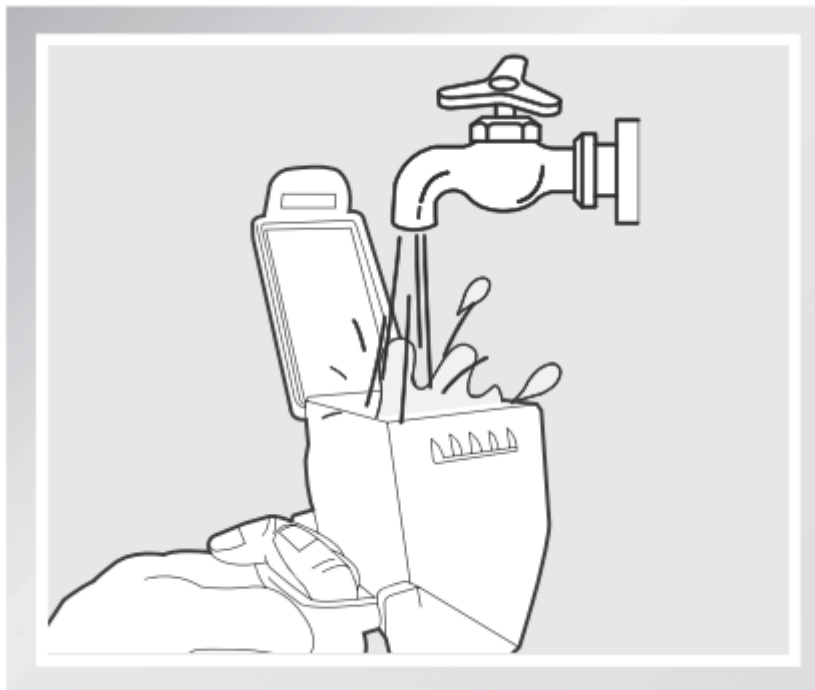
Open the robot's Top Cover and remove the Dust Bin. Open the Dust Bin Lock and empty the Dust Bin.



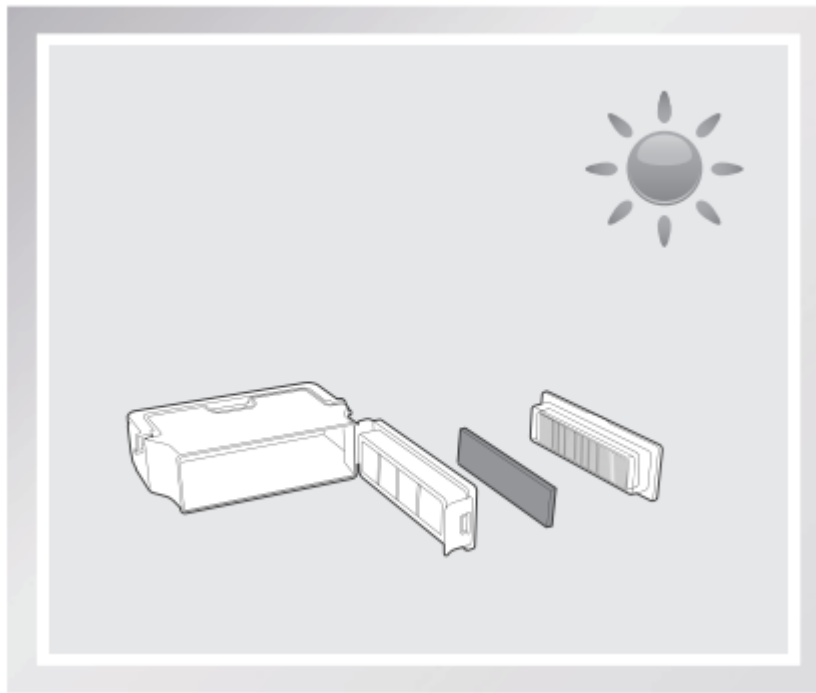
Remove the filters. Pat the High Efficiency Filter and Sponge Filter clean. Do not rinse the High Efficiency Filter under water.



Rinse the Sponge Filter, Dust Bin and Filter Net under running water.



Dry the Dust Bin and filters completely before reinstalling.

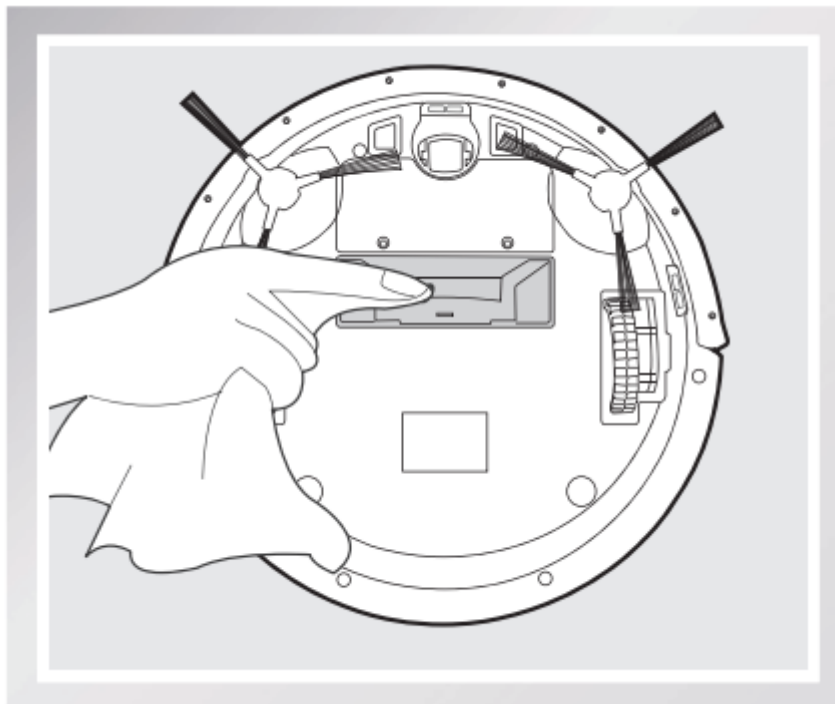


Suction Intake and Side Brushes

A Multi-Function Cleaning Tool is provided for easy maintenance. Handle with care, this cleaning tool has sharp edges.

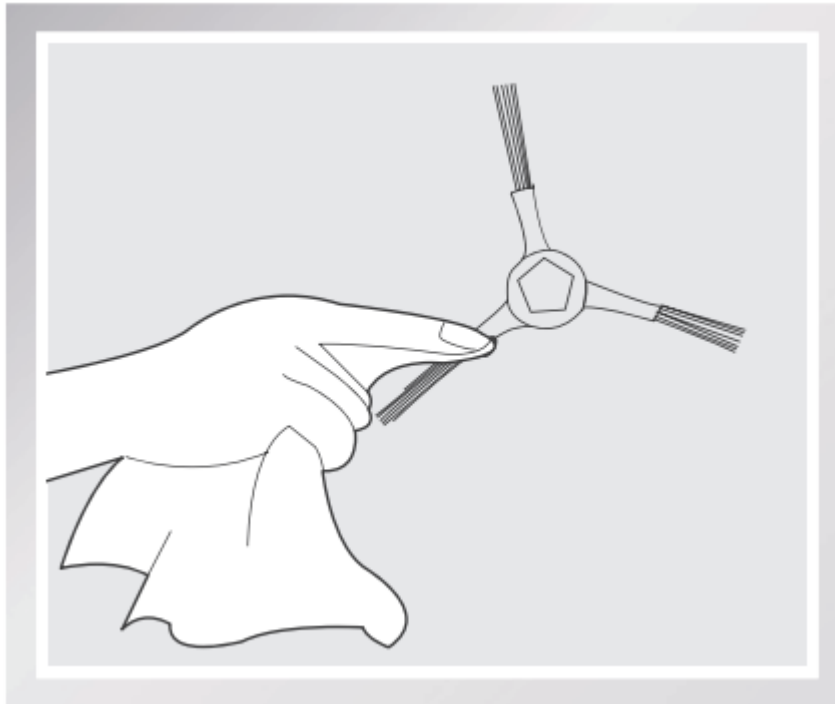
Cleaning Suction Intake

Wipe the Suction Intake with a dry cloth.



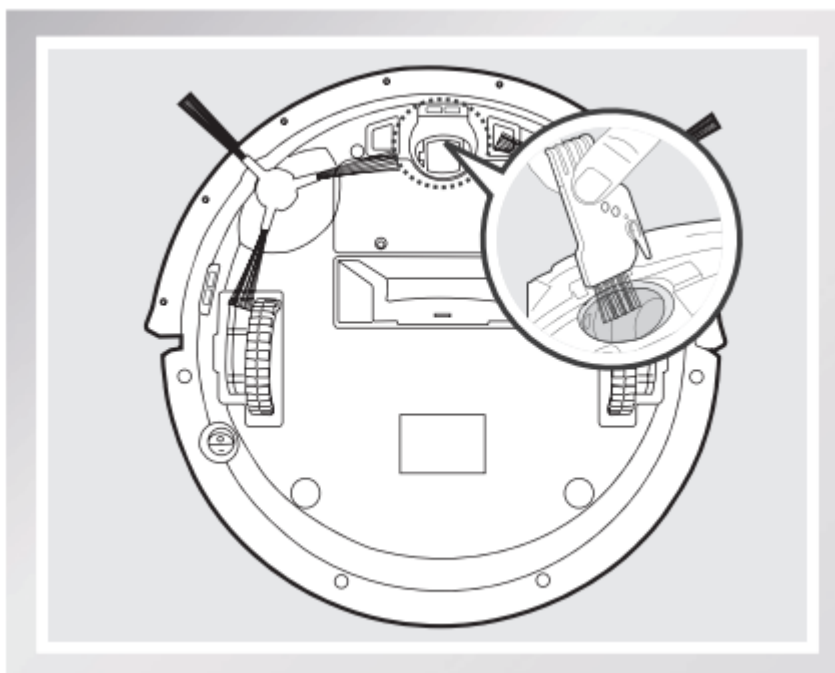
Cleaning the Side Brushes

Remove any hair or debris tangled around the Side Brushes with the provided Multi-Function Cleaning Tool. Remove the Side Brushes and wipe the Side Brushes and their slots with a clean cloth.

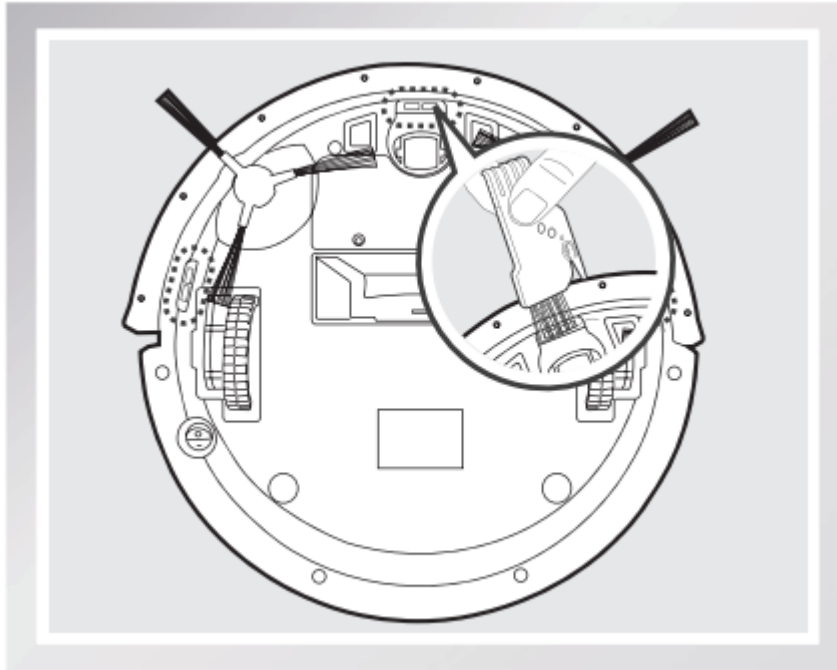


Other Components

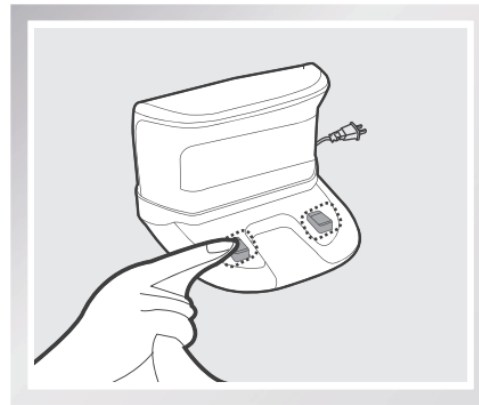
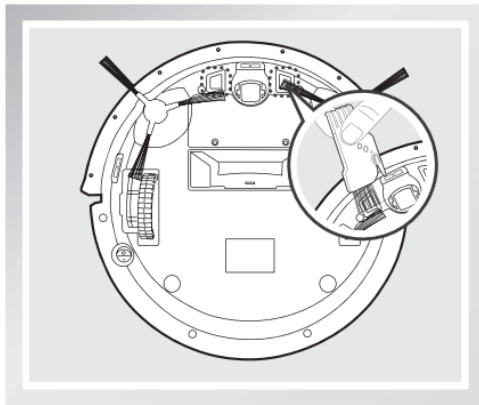
Use the Multi-Function Cleaning Tool to cut off and remove any hair tangled around the Universal Wheel.



Wipe the Anti-Drop Sensors with the brush or felt side of the Multi-Function Cleaning Tool to maintain their effectiveness.



Wipe the robot's Charging Contacts and Charging Docks Pins with the brush of the Multi-Function Cleaning Tool or with a dry cloth to maintain their effectiveness.



Regular Maintenance

To keep DEEBOT running at peak performance, perform the maintenance and replacement according to the following frequency. A multi-Function Cleaning Tool is provided for easy maintenance. Handle with care, this cleaning tool has sharp edges.

Robot Part	Maintenance Frequency	Replacement Frequency
Dust Bin	After each use	/
Side brush	Once every 2 weeks	Every 3-6 months
Main Brush	Once per week	Every 6-12 months
Sponge Filter/ High Efficiency Filter	Once per week (twice per week with pets in home)	Every 4-6 months
Universal Wheel Anti-Drop Sensors Charging Contacts Charging Dock Pins	Once per week	/

Note: ECOVACS manufactures various replacement parts and assemblies. Please contact Customer Service for more information on replacement parts.

Troubleshooting

Please use this chart to troubleshoot common problems using DEEBOT.

Malfunction	Possible Causes	Solutions
DEEBOT will not charge.	DEEBOT is not powered ON. DEEBOT will not charge unless it is powered ON while on the Charging Dock, even if the AUTO Mode Button is flashing.	Move the robot's Bottom Power Switch to the ON position
	DEEBOT has not made a connection with the Charging Dock.	Be sure that the robot's Charging Contacts have made a connection with the Charging Dock Pins. You may move the robot manually to make the connection if necessary.
	The Charging Dock is unplugged while DEEBOT is powered ON, which causes battery consumption.	Plug in the Charging Dock and ensure DEEBOT is powered ON. Keep DEEBOT on the Charging Dock to make sure it has full battery to work at any time.
	The battery is completely discharged.	Reactivate the battery. Place DEEBOT on the Charging Dock by hand, remove after charging for 3 minutes, repeat 3 times; then charge normally.
DEEBOT will not return to the Charging Dock	The Charging Dock is placed incorrectly.	Please refer to section 3.2 Quick Start for details on proper Charging Dock placement.
DEEBOT gets into trouble while working and stops.	DEEBOT is tangled with something on the floor (electrical cords, drooping curtains, area rug fringe etc.).	DEEBOT will try various ways to get itself out of trouble. If it is unsuccessful, manually remove the obstacles and restart.
	The Side Brushes are tangled with hair or debris, and low rotation speed causes DEEBOT to Pause and triggers an alarm.	Check Side Brushes for tangled hair or debris, clean as described in section 4 Maintenance and restart. If the Side Brushes still rotate slowly,



		please contact Customer Service.
--	--	----------------------------------



DEEBOT returns to the Charging Dock before it finishes cleaning.	When battery power gets low, DEEBOT automatically switches to Return to Charger Mode and returns to the Charging Dock to recharge itself.	This is normal. No solution necessary
	Working time varies according to floor surface, room complexity and the selected Cleaning Mode.	This is normal. No solution necessary
DEEBOT will not clean automatically at scheduled time.	Intelligent Scheduling function is cancelled.	Set Intelligent Scheduling. Please refer to section 3.4 Intelligent Scheduling for details.
	DEEBOT is powered OFF.	Power ON DEEBOT
	the robot's battery is low.	Keep DEEBOT powered ON and on the Charging Dock to make sure it has full battery to work at any time.
	the robot's Suction Intake is blocked and/or its components are tangled with debris.	Power OFF DEEBOT, clean the Dust Bin and invert the robot. Clean the Suction Intake and Side Brushes as described in section 4 Maintenance.
Remote Control failure (effective control range of Remote Control is 5m/16')	The battery in the Remote Control need to be replaced.	Replace with a new battery making sure it is installed correctly.
	DEEBOT is powered OFF or the robot's battery is low.	Make sure DEEBOT is powered ON and fully charged.
	The infrared signal cannot be transmitted because the Infrared Emitter on Remote Control or the Infrared Receiver on DEEBOT is dirty.	Use clean dry cloth or the brush side of the provided Multi-Function Cleaning Tool to wipe the Infrared Emitter on Remote Control and the Infrared Receiver on DEEBOT.



	There is other equipment interfering with the infrared signal to DEEBOT.	Avoid using the Remote Control near other equipment using infrared signals.
--	--	---

Warning

This content is compiled from multiple sources and is provided for reference purposes only. It may not be complete or fully applicable to all situations. If you are unable to resolve your issue, please contact the product manufacturer or an authorized service provider for official support.

