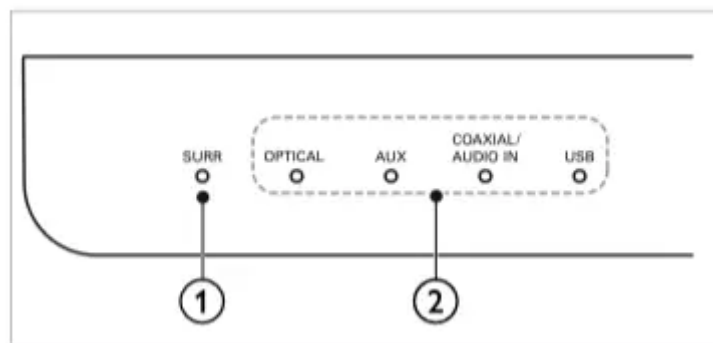


## Your SoundBar

Congratulations on your purchase, and welcome to Philips! To fully benefit from the support that Philips offers, register your SoundBar at [philips/welcome](https://philips/welcome).

### Main unit

This section includes an overview of the main unit.



#### ① SURR indicator

Lights up when you select Virtual Surround sound.

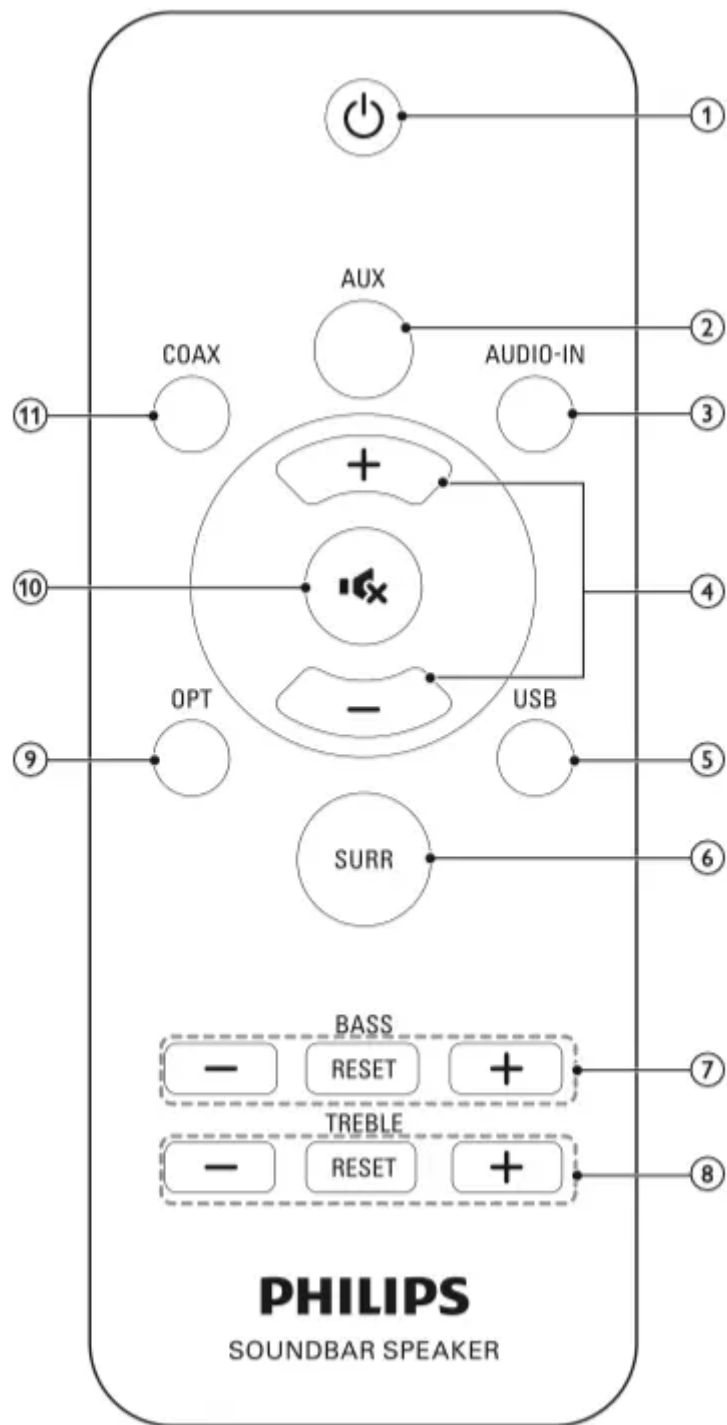
#### ② Source indicators

Source indicator lights up when a source is selected.

- OPTICAL: Lights up when you switch to optical input source.
- AUX: Lights up when you switch to analog input source.
- COAXIAL/AUDIO-IN: Lights up when you switch to coaxial or audio input source (3.5mm jack).
- USB: Lights up when you switch to the USB source.

### Remote control

This section includes an overview of the remote control.



① (Standby-On)

Switch the SoundBar on or to standby.

② **AUX**

Switch your audio source to the AUX connection.

③ **AUDIO-IN**

Switch your audio source to audio input connection (3.5mm jack).

**4** +/-

Increase or decrease volume.

**5** USB

Switch your audio source to the USB connection.

**6** SURR

Toggle between stereo and virtual surround sound.

**7** BASS +/- / RESET

- Increase or decrease bass.
- Reset your bass level to the default settings programmed at the factory.

**8** TREBLE +/- / RESET

- Increase or decrease treble.
- Reset your treble level to the default settings programmed at the factory.

**9** OPT

Switch your audio source to the optical connection.

**10** 

Mute or restore volume.

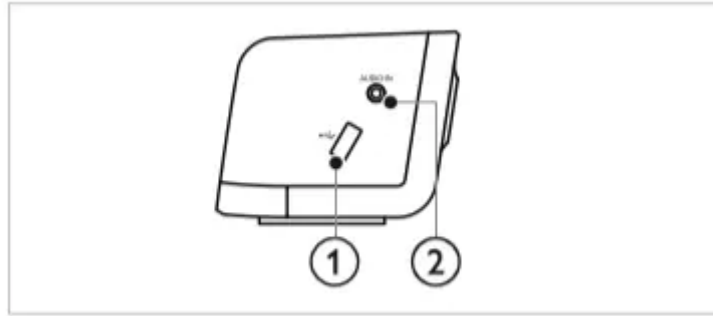
**11** COAX


Switch your audio source to the coaxial connection.

## Connectors

This section includes an overview of the connectors available on your SoundBar.

### Side right



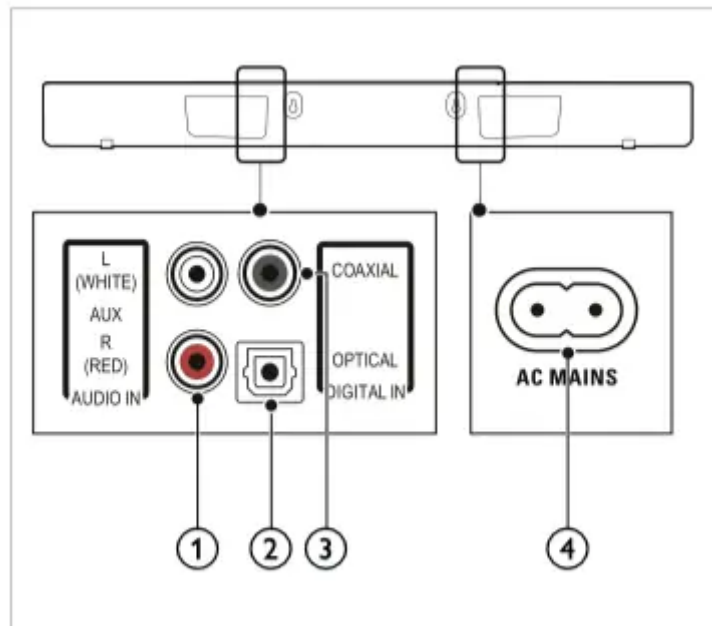
①  (USB)

Audio input from a USB storage device.

② **AUDIO-IN**

Audio input from an MP3 player (3.5mm jack).

**Rear connectors**



① **AUDIO IN-AUX**

Connect to an analog audio output on the TV or an analog device.

② **DIGITAL IN-OPTICAL**

Connect to an optical audio output on the TV or a digital device.

③ **DIGITAL IN-COAXIAL**

Connect to a coaxial audio output on the TV or a digital device.

## ④ AC MAINS~

Connect to the power supply.

## Connect

This section helps you connect your SoundBar to a TV and other devices.

For information about the basic connections of your SoundBar and accessories, see the quick start guide.

### Note

- For identification and supply ratings, refer to the type plate at the back or bottom of the product.
- Before you make or change any connections, make sure that all devices are disconnected from the power outlet.

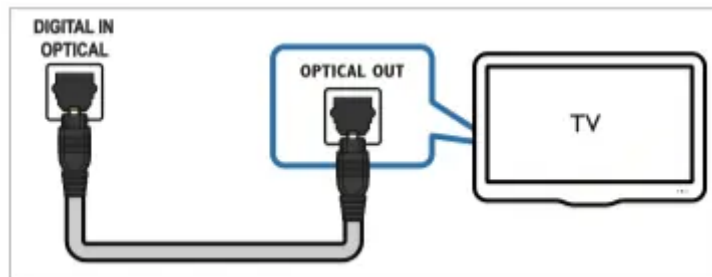
### Connect audio from TV and other devices

Play audio from TV or other devices through your Soundbar.

Use the best quality connection available on your TV and other devices.

#### Option 1: Connect audio through a digital optical cable

##### Best quality audio

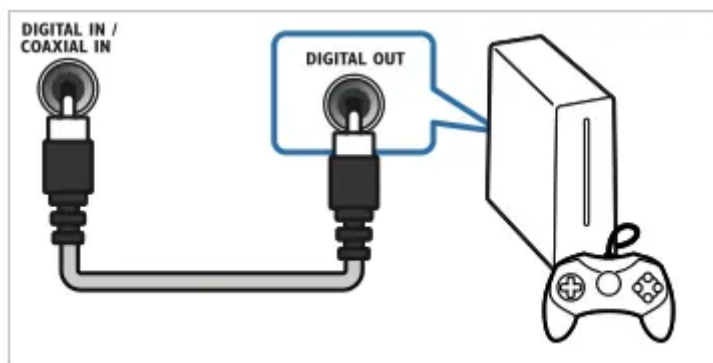


1. Using an optical cable, connect the OPTICAL connector on your SoundBar to the OPTICAL OUT connector on the TV or other device.

- The digital optical connector might be labeled SPDIF or SPDIF OUT.

#### Option 2: Connect audio through a digital coaxial cable

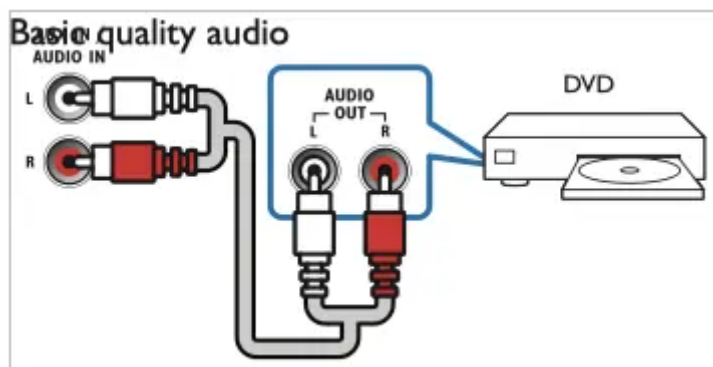
##### Good quality audio



1. Using a coaxial cable, connect the COAXIAL connector on your SoundBar to the COAXIAL/DIGITAL OUT connector on the TV or other device.

- The digital coaxial connector might be labeled DIGITAL AUDIO OUT.

### Option 3: Connect audio through analog audio cables



1. Using an analog cable, connect the AUX connectors on your SoundBar to the AUDIO OUT connectors on the TV or other device.

## Use your SoundBar

This section helps you use the SoundBar to play audio from connected devices.

### Before you start

- Make the necessary connections described in the quick start guide and the user manual.
- Switch the SoundBar to the correct source for other devices.

### Adjust the volume

1. Press +/- to increase or decrease a volume level.

- To mute sound, press  (MUTE).
- To restore the sound, press  (MUTE) again or press +/-.

↳ All Source indicators on the main unit blink twice when a volume is set to the maximum or minimum value.

## Choose your sound

This section helps you choose the ideal sound for your video or music.

### Surround sound mode

Experience an immersive audio experience with surround sound modes.

1. Press SURR to select a surround mode.
  - [Virtual Surround]: Creates a highly surround listening experience. The SURR indicator on the main unit lights up.
  - [Stereo]: Two-channel stereo sound. Ideal for listening to music.

### Equalizer

Change the high frequency (treble) and low frequency (bass) settings of the SoundBar.

1. Press TREBLE +/- or BASS +/- to change the frequency.
  - Press RESET to reset your treble/bass level to the default setting mode.

↳ All Source indicators on the main unit blink twice when treble or bass is set to the maximum or minimum value.

## MP3 player

Connect your MP3 player to play your audio files or music.

### What you need

- An MP3 player.
  - A 3.5mm stereo audio cable.
1. Using the 3.5mm stereo audio cable, connect the MP3 player to the AUDIO-IN connector on your SoundBar.
  2. Press AUDIO-IN.
  3. Press the buttons on the MP3 player to select and play audio files or music.

## USB storage devices

Enjoy audio on a USB storage device, such as an MP3 player and USB flash memory, etc.

### What you need

- A USB storage device that is formatted for FAT file systems, and complies with the Mass Storage Class.

- An MP3 or WMA file on a USB storage device
1. Connect a USB storage device to the SoundBar.
  2. Press USB on the remote control.

↳ The play starts after a few seconds.

#### **Note**

- This product may not be compatible with certain types of USB storage device.
- If you use a USB extension cable, USB HUB, or USB multi-reader, the USB storage device may not be recognized.
- Digital camera PTP protocols are not supported.
- Do not remove the USB storage device while it is being read.
- DRM-protected music files (MP3, WMA) are not supported.
- Support a USB port: 5V , 500mA.

#### **Auto standby**

When playing media from a connected device, the SoundBar automatically switches to standby if:

- no button is pressed for 15 minutes, and
- no audio play from a connected device.

#### **Apply factory settings**

You can reset your SoundBar to the default setting mode.

1. In mute mode, quickly press AUX twice.

↳ The factory settings is restored.

#### **Update software**

To continually improve the product, software upgrade may be offered. Visit [philips/support](https://philips.com/support) to check if the latest software version is available.

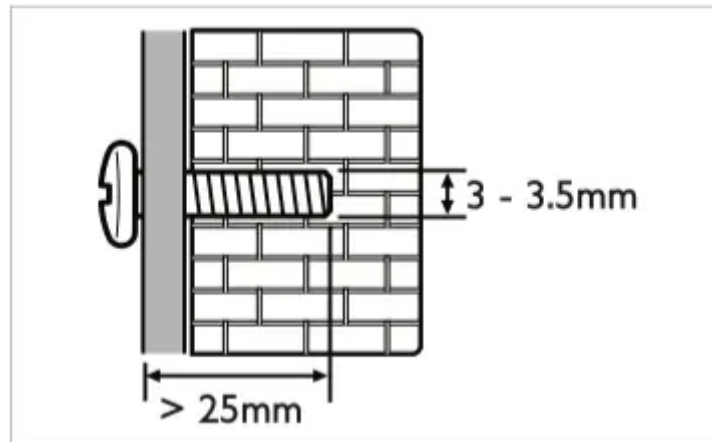
## **Wall mount**

#### **Note**

- Koninklijke Philips Electronics N.V. bears no responsibility for improper wall mounting that results in accident, injury or damage. If you have any query, contact Philips Consumer Care in your country.
- Before wall mounting, make sure the wall can support the weight of your SoundBar.

## Screw length/diameter

Depending on the type of wall mounting your SoundBar, make sure that you use screws of a suitable length and diameter.



For information about how to wall mount your SoundBar, see the quick start guide.

## Product specifications

### Note

- Specifications and design are subject to change without notice.

### Amplifier

- FTC total output power: 34 W
- Left + Right: 34 W (1% THD, 8 ohm, 90 Hz - 20 kHz)
- Total output power: 40 W RMS (+/- 0.5 dB, 10% THD)
- Frequency response: 20 Hz-20 kHz /  $\pm 3$  dB
- Signal-to-noise ratio: > 65 dB (CCIR) / (A-weighted)
- Input sensitivity:
- AUX: 650 mV
- AUDIO-IN: 400 mV

### Audio

- S/PDIF Digital audio input:
- Coaxial: IEC 60958-3
- Optical: TOSLINK
- Sampling frequency:

- MP3: 8 kHz, 11 kHz, 12 kHz, 16 kHz, 22 kHz, 24 kHz, 32 kHz, 44.1 kHz, 48 kHz
- WMA: 44.1 kHz, 48 kHz
- Constant bit rate:
- MP3: 8 kbps-320 kbps
- WMA: 64 kbps-192 kbps
- Version:
- WMA: V7, V8, V9

## USB

- Compatibility: Hi-Speed USB (2.0)
- Class support: USB Mass Storage Class (MSC)
- File system: FAT16 and FAT32
- Supports MP3 and WMA file formats

## Main unit

- Power supply: 220-240 V~, 50 Hz
- Power consumption: 40 W
- Standby power consumption:  $\leq 0.5$  W
- Speaker impedance: 8 ohm (full range)
- Speaker drivers: 4 x 54.5 mm (2")
- Dimensions (WxHxD): 845 x 74.5 x 94 mm
- Weight: 2.0 kg

## Remote control batteries

- 1 x AAA-R03-1.5 V

# Troubleshooting

## Warning

- Risk of electric shock. Never remove the casing of the product.

To keep the warranty valid, never try to repair the product yourself.

If you have problems using this product, check the following points before you request service. If you still have a problem, get support at philips/support.

## Sound

### No sound from SoundBar speakers.

- Connect the audio cable from your SoundBar to your TV or other devices.
- Reset your SoundBar to its factory settings.
- On the remote control, select the correct audio input.
- Make sure that the SoundBar is not muted.

### Distorted sound or echo.

- If you play audio from the TV through the SoundBar, make sure that the TV is muted.

## Notice

This section contains the legal and trademark notices.

### Notice of compliance

The device complies with Part 15 of the FCC Rules. Operation is subject to the following two conditions:

- ① This device may not cause harmful interference, and
- ② This device must accept any interference received, including interference that may cause undesired operation.

### FCC rules

This equipment has been tested and found to comply with the limits for a Class B digital device, pursuant to part 15 of the FCC Rules. These limits are designed to provide reasonable protection against harmful interference in a residential installation. This equipment generates, uses and can radiate radio frequency energy and, if not installed and used in accordance with the instruction manual, may cause harmful interference to radio communications. However, there is no guarantee that interference will not occur in a particular installation. If this equipment does cause harmful interference to radio or television reception, which can be determined by turning the equipment off and on, the user is encouraged to try to correct the interference by one or more of the following measures:

- Relocate the receiving antenna.
- Increase the separation between equipment and receiver.
- Connect the equipment into an outlet on a circuit different from that to which the receiver is connected.
- Consult the dealer or an experienced radio/TV technician for help.

**FCC Radiation Exposure Statement:** This equipment complies with FCC radiation exposure limits set forth for an uncontrolled environment. This equipment should be installed and operated with a minimum distance of 20cm between the radiator and your body. This transmitter must not be co-located or operated in conjunction with any other antenna or transmitter.

**Warning:** Changes or modifications made to this equipment not expressly approved by Philips may void the FCC authorization to operate this equipment.

**Model number:** PHILIPS HTL2101/F7 Trade Name: Philips Responsible Party: P&F USA, Inc. PO Box 2248 Alpharetta, GA 30023-2248; 1-866-310-0744

**Canada:**

This Class B digital apparatus complies with Canadian ICES-003.

## Important

Read and understand all instructions before you use your product. If damage is caused by failure to follow instructions, the warranty does not apply.

## Help and support

Philips provides extensive online support. Visit our website at [philips/support](https://philips.com/support) to:

- download the user manual and the quick start guide
- watch video tutorials (available only for selected models)
- find answers to frequently answered questions (FAQs)
- email us a question
- chat with our support representative. Follow the instructions on the website to select your language, and then enter your product model number.

Alternatively, you can contact Philips Consumer Care in your country. Before you contact Philips, note down the model number and serial number of your product. You can find this information on the back or bottom of your product.

## Important safety instructions

- Read these instructions.
- Keep these instructions.
- Heed all warnings.
- Follow all instructions.
- Do not use this apparatus near water.
- Clean only with dry cloth.

- Do not block any ventilation openings. Install in accordance with the manufacturer's instructions.
- Do not install near any heat sources such as radiators, heat registers, stoves, or other apparatus (including amplifiers) that produce heat.



- Do not defeat the safety purpose of the polarized or grounding-type plug. A polarized plug has two blades with one wider than the other. A grounding type plug has two blades and a third grounding prong. The wide blade or the third prong are provided for your safety. If the provided plug does not fit into your outlet, consult an electrician for replacement of the obsolete outlet.
- Protect the power cord from being walked on or pinched, particularly at plugs, convenience receptacles, and the point where they exit from the apparatus.
- Only use attachments/accessories specified by the manufacturer.



- Use only with the cart, stand, tripod, bracket or table specified by the manufacturer or sold with the apparatus. When a cart is used, use caution when moving the cart/apparatus combination to avoid injury from tip-over.
- Unplug this apparatus during lightning storm or when unused for long periods of time.
- Refer all servicing to qualified service personnel. Servicing is required when the apparatus has been damaged in any way, such as power-supply cord or plug is damaged, liquid has been spilled or objects have fallen into the apparatus, the apparatus has been exposed to rain or moisture, does not operate normally, or has been dropped.

Install in accordance with the manufacturer's instructions.

- Do not install near any heat sources such as radiators, heat registers, stoves, or other apparatus (including amplifiers) that produce heat.
- Battery usage CAUTION - To prevent battery leakage which may result in bodily injury, property damage, or damage to the unit:
  - Install all batteries correctly, + and - as marked on the unit.
  - Do not mix batteries (old and new or carbon and alkaline, etc.).
  - Remove batteries when the unit is not used for a long time.
  - The batteries shall not be exposed to excessive heat such as sunshine, fire or the like.

- Perchlorate Material - special handling may apply. See dtsc/ hazardouswaste/perchlorate.
- The product/remote control may contain a coin/button type battery, which can be swallowed. Keep the battery out of reach of children at all times! If swallowed, the battery can cause serious injury or death. Severe internal burns can occur within two hours of ingestion.
- If you suspect that a battery has been swallowed or placed inside any part of the body, seek immediate medical attention.
- When you change the batteries, always keep all new and used batteries out of reach of children. Ensure that the battery compartment is completely secure after you replace the battery.
- If the battery compartment cannot be completely secured, discontinue use of the product. Keep out of reach of children and contact the manufacturer.
- Apparatus shall not be exposed to dripping or splashing.
- Do not place any sources of danger on the apparatus (for example. liquid filled objects, lighted candles).
- This apparatus may contain lead and mercury. Dispose according to local, State or Federal laws. For disposal or recycling information, please contact your local authorities. For additional assistance on recycling options, please contact mygreenelectronics or eiae or recycle.philips
- Where the MAINS plug or an appliance coupler is used as the disconnect device, the disconnect device shall remain readily operable.
- Do not place this apparatus on the furniture that is capable of being tilted by a child and an adult leaning, pulling, standing or climbing on it. A falling apparatus can cause serious injury or even death.
- This apparatus should not be placed in a built-in installation such as a bookcase or rack unless proper ventilation is provided. Make sure to leave a space of 7.8 inches (20cm) or more around this apparatus.

### **Class II equipment symbol**



This symbol indicates that the unit has a double insulation system.



This 'bolt of lightning' indicates uninsulated material within your unit may cause an electrical shock. For the safety of everyone in your household, please do not remove product covering.



The 'exclamation point' calls attention to features for which you should read the enclosed literature closely to prevent operating and maintenance problems.

**WARNING:** To reduce the risk of fire or electric shock, this apparatus should not be exposed to rain or moisture and objects filled with liquids, such as vases, should not be placed on this apparatus.

**CAUTION:** To prevent electric shock, match wide blade of plug to wide slot, fully insert.

## Care for your product

Use only microfiber cloth to clean the product.

## Care of the environment

Your product is designed and manufactured with high quality materials and components, which can be recycled and reused. Please visit [www.recycle.philips.com](http://www.recycle.philips.com) for additional information on a recycling center in your area.

Never dispose of your product with other household waste. Please inform yourself about the local rules on the separate collection of electrical and electronic products and batteries. The correct disposal of these products helps prevent potentially negative consequences on the environment and human health.

The batteries supplied do not contain the heavy metals mercury and cadmium. Nevertheless, in many areas batteries may not be disposed of with your household waste. Please ensure you dispose of batteries according to local regulations.

### Warning

This content is compiled from multiple sources and is provided for reference purposes only. It may not be complete or fully applicable to all situations. If you are unable to resolve your issue, please contact the product manufacturer or an authorized service provider for official support.