

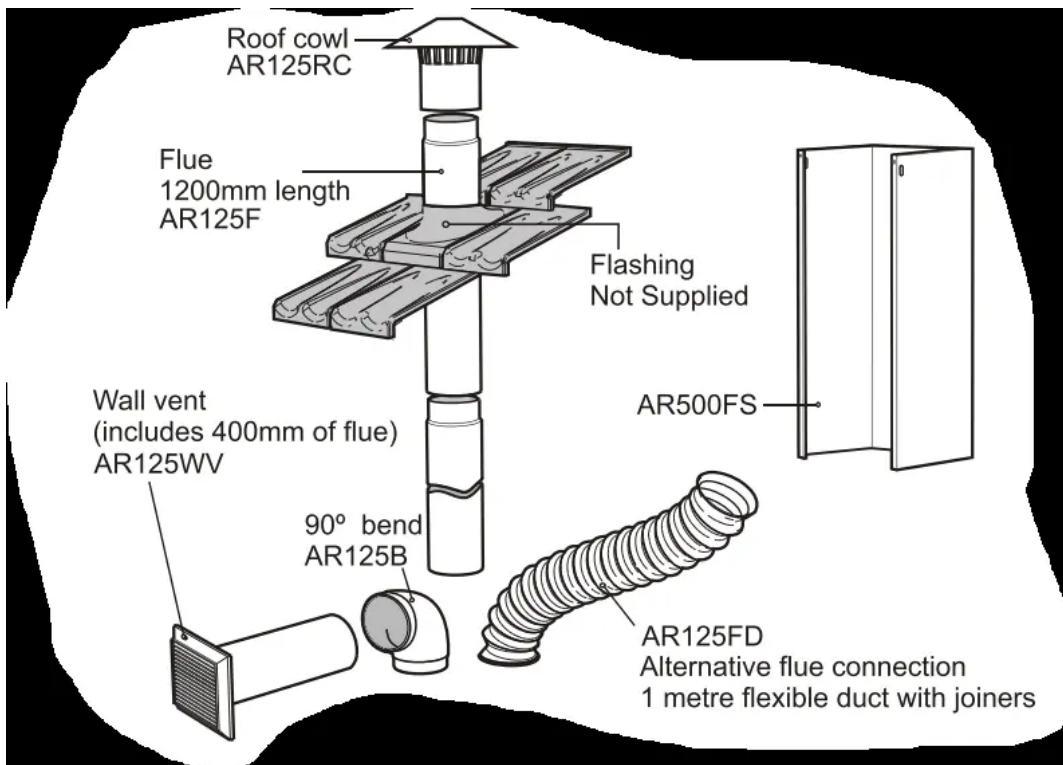
ELECTRICAL CONNECTION


- Check that the mains voltage matches with the voltage on the data plate inside the cooker hood.
- Check that the installation complies with standards of local gas and electricity authorities.
- If the supply cord is damaged, it must be replaced by the manufacturer or its service agent or a similarly qualified person in order to avoid a hazard.

ACCESSORIES

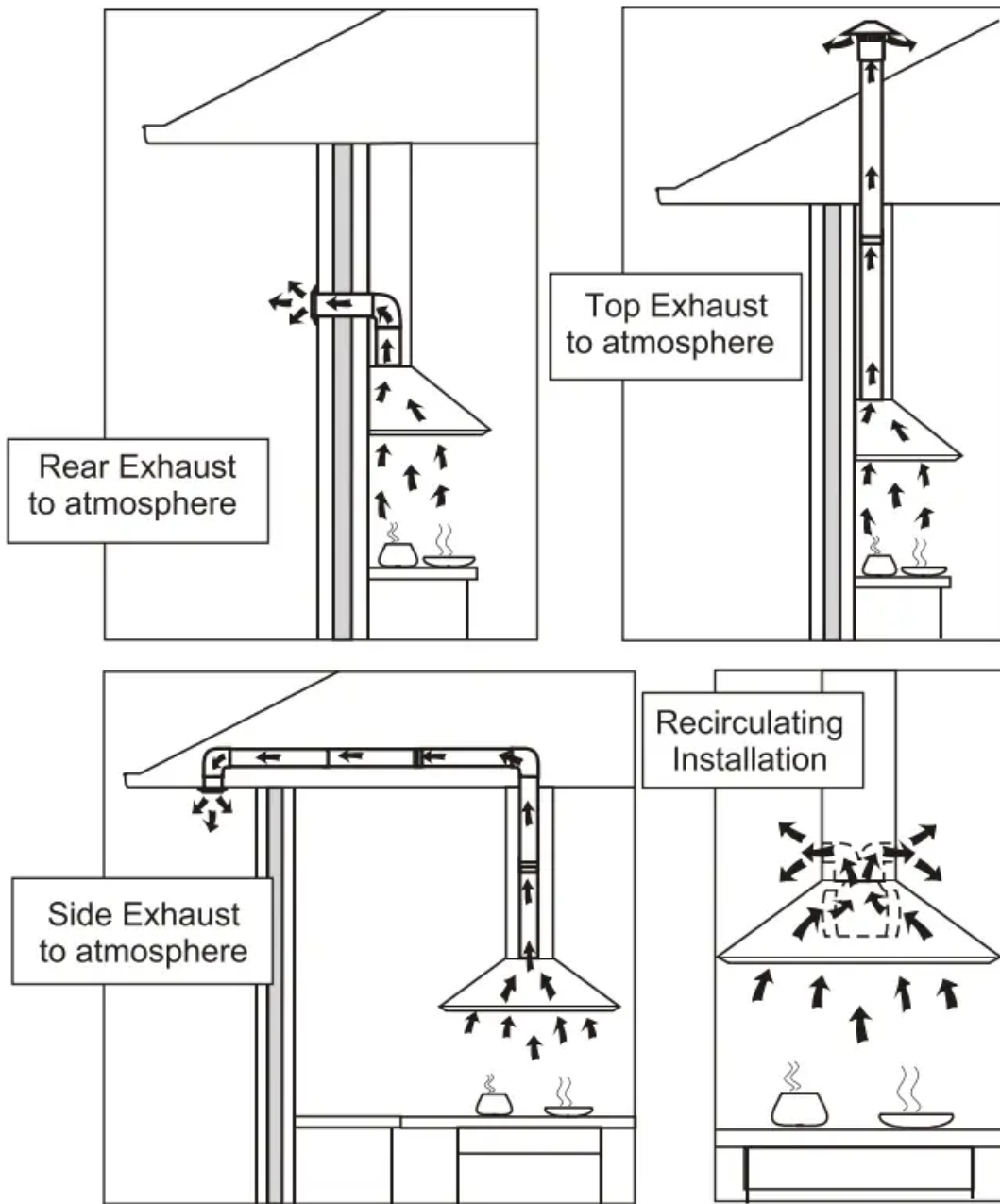
- Use 120mm round exhaust ducting for best performance.
- When using flexible duct always install duct with the wire helix pulled taut to minimise pressure loss.
- Try to keep exhaust duct short and straight.
- Keep bends in the exhaust duct to a minimum.
- Do not reduce the size or restrict exhaust duct.

DUCTING ACCESSORIES



	Part Numbers:	Description:
	AR125RC	Roof Cowl
	AR125B	90° Bend
	AR125F	Flue 1200mm Long
	AR125FD	Flexible Duct -1 Metre Long When Expanded
	AR125VW	Wall Vent Kit
	AR500FF	Extra Length Flue Cover 1100mm Length Brushed Stainless Steel
	AR500RK	Recirculating Kit
	AR500CF	Replacement Carbon Filters

INSTALLATION OPTIONS



Warning: Failure to install the screws or fixing device in accordance with these instructions may result in electrical hazards.



COMPONENTS LIST

- 1 body assembly with grease filters (900-3 grease filters / 600-2 grease filters)
- 1 telescopic flue cover set
- 2 cover flue mounting brackets
- 1 instruction book
- 1 plastic bag containing screws for fixing telescopic flue covers
- 1 plastic duct transition: oblong to round

COMPONENTS NOT INCLUDED

- Fixings required to attach cover flue mounting brackets to wall
- Fixings required to attach the cooker hood to wall

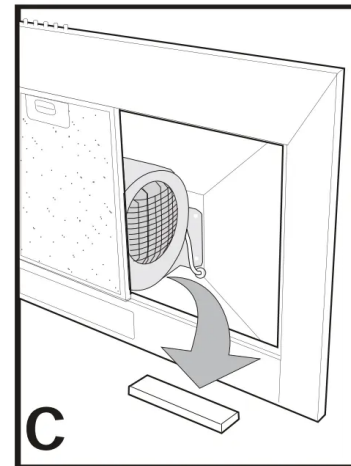
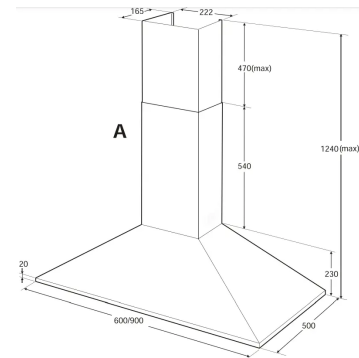
INSTALLING THE COOKER HOOD

Before installing the cooker hood, peel off any protective plastic covering.

Remove polystyrene packaging from inside behind fan motor.

(Diagrams C)

DIMENSIONS ARE IN MILLIMETRES



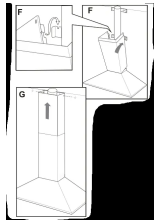


Diagram (s) F

Install bottom section of telescopic flue cover.

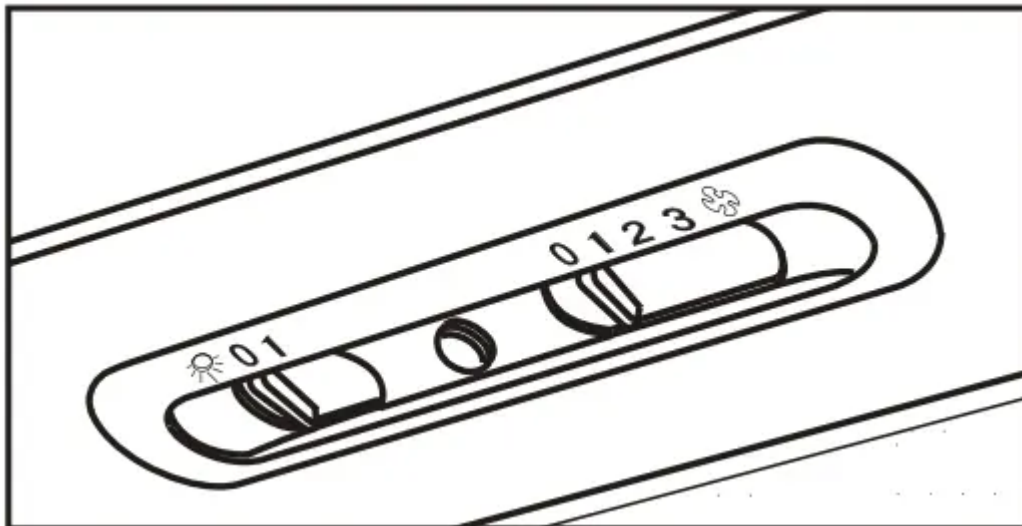
Diagram G

Install top section of telescopic flue cover

COOKER HOOD OPERATION

IMPORTANT: *The Edison Screw lamps may have come loose during transportation. Ensure that lamps are tightened firmly into the socket before power is applied.*

Best results are obtained by using a low fan speed for normal conditions and a high fan speed when odours are more concentrated. Turn the hood on a few minutes before you start cooking. It should be left on after cooking for about 15 minutes or until all odours have disappeared.



Slide switch controls:

Light switch:.....This switch is used to turn the light fitted in the hood on and off.

Extractor fan switch:Used to select fan speeds.

Slide position 1:.....Fan speed Low

Slide position 2:-----Fan speed Medium

Slide position 3:.....Fan speed High



Press button switch controls

Light switch: Depress light button to turn light ON. Press light button to turn light OFF.

Extractor fan switch interlocked switching:

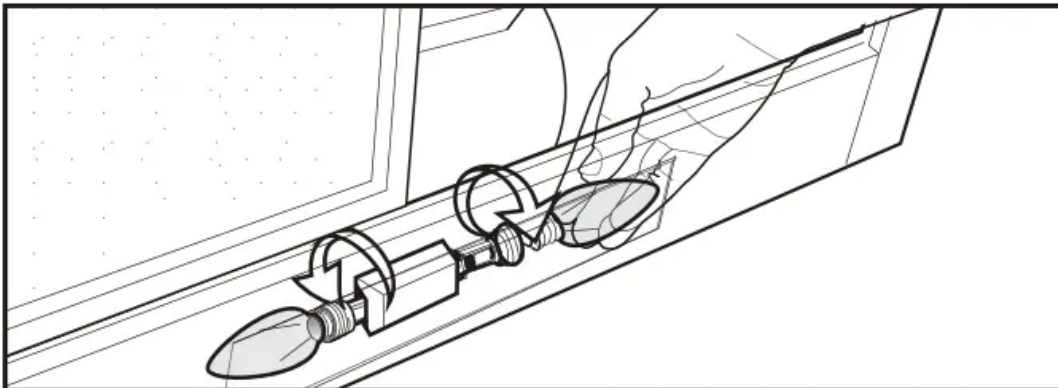
Select a fan speed, depress button to turn fan ON. Press button (O) to turn fan OFF.

NOTE:

This product is fitted with a safety cutout device. If the cooker hood is installed too close to the cooktop, flambé cooking, operating the cooktop without cooking utensils and blocked filters may activate the safety cutout device, if the hood stops during operation, correct the faults and allow time for the safety cutout device to reset, the cooker hood will then function correctly.

Replacing lamps:

Ensure the appliance is switched off before carrying out maintenance, to avoid any possibility of electric shock. Remove grease filter to replace lamp. Replace with 40W (maximum) E14 candle lamp.



MAINTENANCE

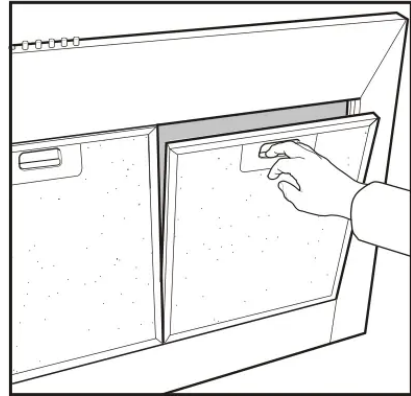
Clean grease filters every three to four weeks maximum.

Greasy filters are a fire risk.

Remove the grease filters, soak and agitate in hot soapy water.

Rinse, drain and shake well before replacing filters.

Do not use oven cleaners or other caustic materials.



CLEANING

Wipe the cooker hood body and use with a sponge or soft cloth soaked in warm soapy water. Do not use oven cleaners or other abrasive materials.

Warning

This content is compiled from multiple sources and is provided for reference purposes only. It may not be complete or fully applicable to all situations. If you are unable to resolve your issue, please contact the product manufacturer or an authorized service provider for official support.