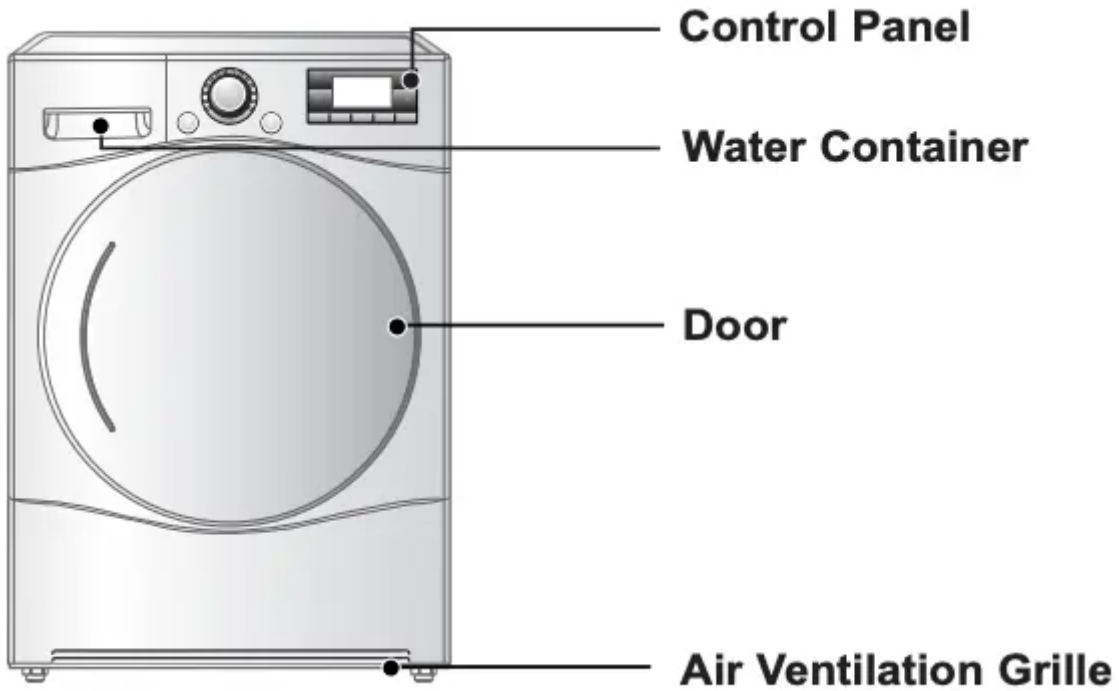
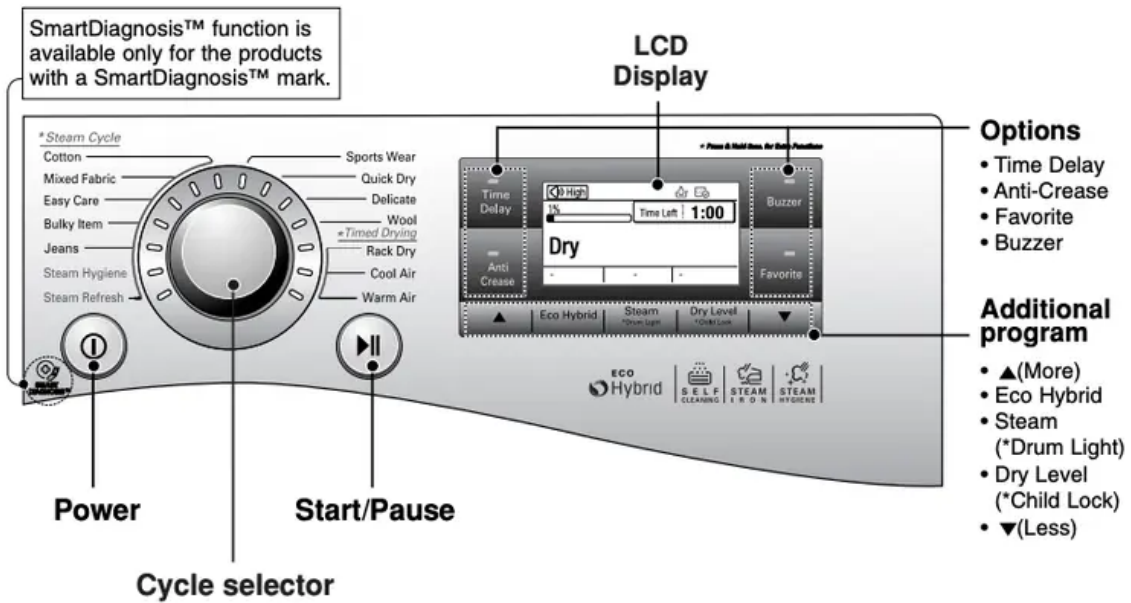


## Appearance & Design

### Product Layout



### Control Panel



## Operating Your Dryer

### Cycle Selection Table

Sensor Dry Cycle			
Cycle	Laundry Type	Detail	Drying Level
Cotton	Towels, dressing gowns and bed linen	For thick and quilted fabrics	Extra
	Terry towels, tea towels, towels and bed linen	For thick and quilted fabrics that do not need to be ironed	Very
	Bath towels, tea towels, underwear and cotton socks	For fabrics that do not need to be ironed	Cupboard
	Sheets, pillowcase and towels	For fabrics that do not need to be ironed	Light
	Bed linen, table linen, towels, T-shirts, polo shirts and work clothes	For fabrics that do need to be ironed	Iron
Mixed Fabric	Bed linen, table linen, tracksuits, anoraks and blankets	For thick and quilted fabrics that do not need to be ironed	Very
	Shirts and blouses	For fabrics that do not need to be ironed	Cupboard
	Trousers, dressers, skirts and blouses	For fabrics that do need to be ironed	Iron
Easy care	Shirts, T-shirts, trousers, under-wear and socks	For polyamide, acrylic, and polyester that do not need to be ironed	Cupboard
	Shirts, T-shirts, under-wear, anoraks and socks	For polyamide, acrylic, polyester that do need to be ironed	Iron
Bulky Item	Bed clothes, sheets	For bulky items	-
Jeans	Jeans and colour fading garments.	For jeans which do not need to be ironed	-
Steam Hygiene	Comforter bedding and Children's clothing	Sanitising non washable items quickly and easily using the power of steam alone. Recommend to use this cycle for cotton and polyester material.	-
Steam Refresh	Shirts and blouses	Crease release of fabric Fabrics are not dried completely. Hang up fabrics!	-
Sports Wear	Soccer kit and training wear	For polyester material	-
Quick Dry	Linen and towels, excluding fabrics applied to delicate, sports wear, bulky item cycle.	For small loads of suitable fabrics with short drying times	-
Delicate	Silk, fine fabrics and lingerie	For fabrics that are heat-sensitive like synthetic fabrics	-
Wool	Wool	For wool fabrics	-
Timed Drying Cycle			
Rack Dry	Silk, wool, delicate lingerie	Refresh clothes without tumble drying	-
Cool Air	All fabrics that need refreshing	Tumbles without heat	-
Warm Air	Bath towels, bath robes, dishcloth and quilted fabrics made of acrylic	Small Items & damp clothing Everyday items suitable for heat drying	-

**CAUTION** If the load is less than 1kg, please use the “Warm Air” Cycle in Timed Drying Cycle. Wool items should be dried using the “Wool” Cycle and heat-sensitive fabrics including silk, underwear and lingerie should be dried using the “Delicate” Cycle. Please comply with the recommended laundry load when you select your desired Cycle- found on page 22. Otherwise, your clothes may be damaged.

## **Please read before using your LG dryer for the first time**

- After removing the packaging, please carry out the following checks to ensure the LG dryer is correctly installed and ready for use. (See installation instructions)
1. Check the dryer is well balanced by using a spirit level. If not, adjust the feet of the LG dryer until the machine is balanced.
  2. Check the water container, filter, control panel and drum to make sure everything is in place.
  3. Set the machine to dry for 5 minutes to warm up the drum.
  4. Open the door between loads the first few times you use the machine to allow any odours from the interior of the LG dryer to disperse.

**Note** The final part of a tumble dryer cycle occurs without heat (cool down cycle) to ensure that the items are left at a temperature to ensure that the items will not be damaged.

**1. Turn the power on.** First, press the “Power” button. The indicator light above the button will become illuminated indicating that the machine is all set to run.

**2. Open the door.**

**3. Check the filter and water container are clean.** The filter is inside the door rim or in the back of the door. It needs to be cleaned before and after drying. Open the door and check the filter is clean. If not, please clean it referring to page 19. Also check if water container need to be emptied for better drying results.

**4. Place laundry into the drum after sorting.** The clothes should be sorted by fabric type and dryness level and all the strings and belts of clothes should be well tied and fixed before being put into the drum. Push the laundry to the back to keep it away from the door seal. If not, the door seal and clothes may be damaged.

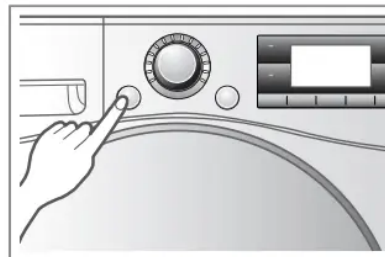
**CAUTION** Do not dry unwashed items in the tumble dryer.

**5. Close the door.** Before you close the door, make sure fabrics are well placed inside and that foreign objects, especially flammable ones, are not caught around door.

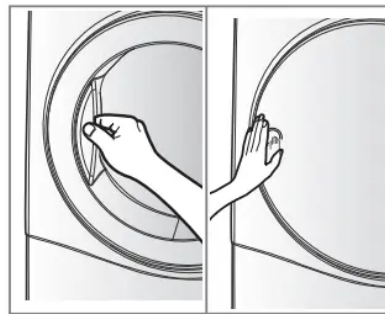
**CAUTION** Be careful not to trap laundry between the loading door and rubber seal.

**6. Select the drying cycle you want.** You can choose a cycle by turning the cycle selector knob until the required cycle is indicated. If you press Start/Pause button without choosing a cycle, the dryer will proceed with the Cupboard cycle. [Please refer to Cycle Selection table (page 13) for the detailed information.

**7. Press the start button.** You will hear drum rotating.



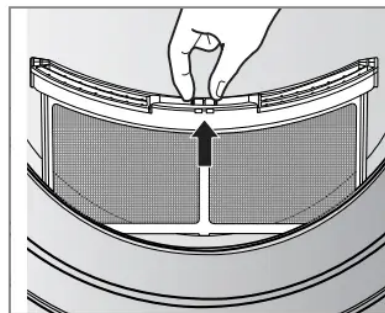
Turn the power on.



Open the Door.

Glass Door

Opaque Door



Check the filter.

**8. After the cycle has finished, open the door and remove the laundry.**

**CAUTION** Be careful! The drum inside could still be hot. (Operation time varies depending on your cycle selection or options.)

**Note** The final part of a tumble dryer cycle occurs without heat (cool down cycle) to ensure that the items are left at a temperature that will not damage them.

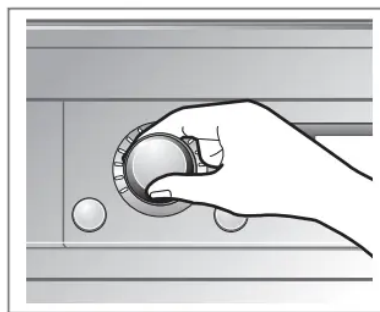
**9. Clean the filter and empty water container.** The filter should be cleaned after each load.

**10. Turn off the dryer.** Press the "Power" button.

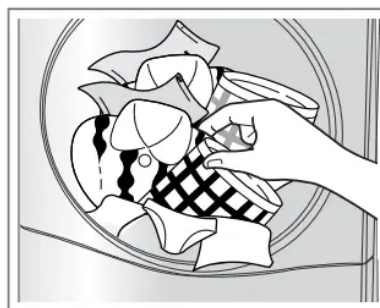
**CAUTION**

- Take care if using a vacuum cleaner to clean the filter, as it is easily damaged and torn. If there is a residue build up on the filter, scrub the filter with a brush to remove.

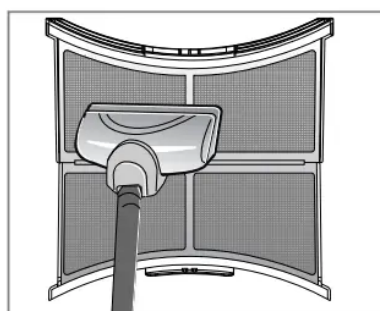
- If you want to open the door while the dryer is operating, please press the Start/Pause button first, wait until the drum completely stops and then open the door.



Select the desired cycle.



Take out the laundry.



Clean the filter. (Replace the filter if it is damaged.)

**WARNING** Never stop a tumble dryer before the end of the drying cycle unless all items are quickly removed and spread out so that the heat is dissipated.

**CAUTION** It must not be used for purposes other than those for which it was designed.

## Rack Dry

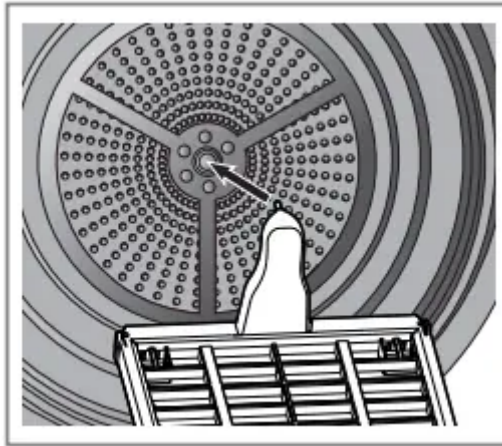
The dryer rack is placed inside the dryer like the picture. Remove and discard packing material before use. The Rack Dry is designed for use with items that must be dried flat, without tumbling, including sweaters and delicate fabrics.

**Note** Check the filter and remove any lint accumulated from items dried on the Rack. If preferred, set up Eco by pressing Eco Hybrid button.

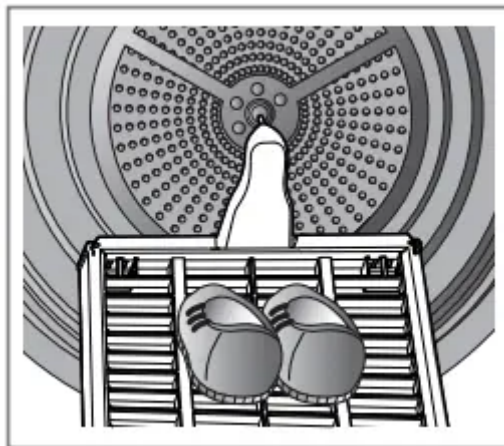
**To use the Rack Dry :**

1. Open the door.

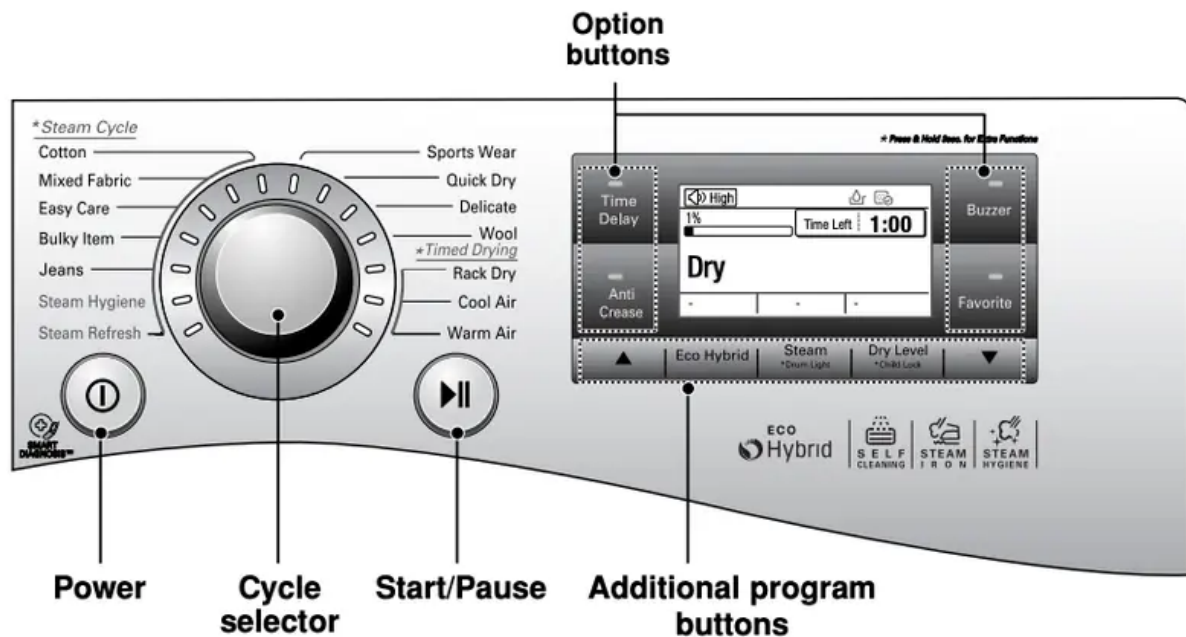
2. Do not remove the filter.
  3. Place dryer rack over the bottom of the dryer door opening. Reset the Rack on the dryer back lodge. Push down on the frame front to secure over filter.
  4. Place wet items on top of the rack. Allow space around items for air to circulate. The rack does not move, but the drum will rotate.
  5. Close the door.
  6. Turn power on and select Rack Dry.
1. Insert wire edge to the drum center.



2. Place delicate fabrics or sports shoes.



## Additional Functions



### Power

- Press the Power button to turn power on and off.
- To cancel the Time Delay cool function, the power button should be pressed.

### Cycle selector

- Cycles are available according to the laundry type.
- The lamp will light up to indicate selected cycle.

### Start/Pause

- This Start/Pause button is used to start dry cycle or pause the dry cycle.
- If stop the cycle temporarily, press the Start/Pause button.
- When in Pause, the power is turned off automatically after 4 minutes.

### Additional program

- Use these buttons to select the desired options for the selected cycle.

### LCD display

- The display shows the settings, estimated time remaining, options, and status messages for your dryer. The display will remain on through out the cycle.

### Options

- This allows you to select addition cycle and will light when select.

## Language Selection

- English is the default language. Language can be changed only when LCD is on. Power On and then press the Time Delay and Anti Crease button simultaneously for 3 seconds until the Select a Language menu is displayed.



## Time Delay

You can use the Time Delay option to delay the finishing time of drying cycle.

Maximum Time Delay is 19 hours. Minimum Time Delay is 3 hours.

1. Turn the dryer on.
2. Select a cycle.
3. Set time delay hour by press the ▲, ▼ button.
4. Press Start/Pause button.

## Anti-Crease

The Anti-Crease option prevents creases that are formed when the laundry is not unloaded promptly at the end of the drying cycle. When Anti Crease is selected, the dryer repeatedly runs and pauses, giving you 2 hours to unload the laundry. If the door is opened during the Anti-Crease option, the option is cancelled.

## Favorite

Favorite option allows you to store a customized dry cycle for future use.

1. Turn the dryer on.
2. Select a cycle.
3. Select the option or additional program. (Steam, Anti-Crease, Eco Hybrid etc.)
4. Press and hold Favorite option button for 3 seconds.

The Favorite option is now stored for future use. To reuse the stored cycle, select Favorite option and press the Start/Pause.

## Drum Light

Whilst the dryer is running it is possible to see inside the drum if you select the Drum Light function.

Light on : Door is opened. For 3 sec drum light button are selected.

Light off : Door is closed. Off automatically.

## Eco Hybrid

This additional program is able to save energy or time.

Eco: energy saving course. (Heat Pump only)

Hybrid: time saving course. (Heat Pump + Heater) You will see speed " indication on the LCD.

## Steam

**WARNING** Do not open the dryer door during Steam Cycles. Do not touch the steam nozzle in the drum during or after the steam cycle.

### Using the Steam cycle

The Steam Refresh cycle uses the power of steam to quickly reduce wrinkles in fabrics.

1. Turn the dryer on.
2. Select steam cycle.
3. Press the "▲", "▼" button.
4. Press the Start/Pause button.

For these settings, the dryer tumbles while the water in the steam generator is heated.

Steam cycle	Steam Hygiene	-
	Steam Refresh	-
Steam option cycle	Easy Iron / Static Shield	Cotton, Easy Care, Mixed Fabric
	Static Shield	Jeans, Bulky Item

**Note** Do not use Steam cycle for delicates such as wool, silk, and easily discoloured clothes.

## Child Lock ( )



For the safety of your children, press Dry Level button for about 3 seconds. You will see “Child Lock is on ” indication on the LCD.

- All controls except Child Lock and Power buttons will be disabled.
- Child Lock lasts after the end of cycle.

**Note** For “Child Lock is off ”, press Dry Level button for about 3 seconds.

## Buzzer

This is a option to enable you to adjust volume of beeper sound.

## Caring for Your Dryer

### Care and Cleaning is very Important

It's not difficult to care for your dryer but it is important that you do care for it. Follow the instructions below.

### Clean Filter

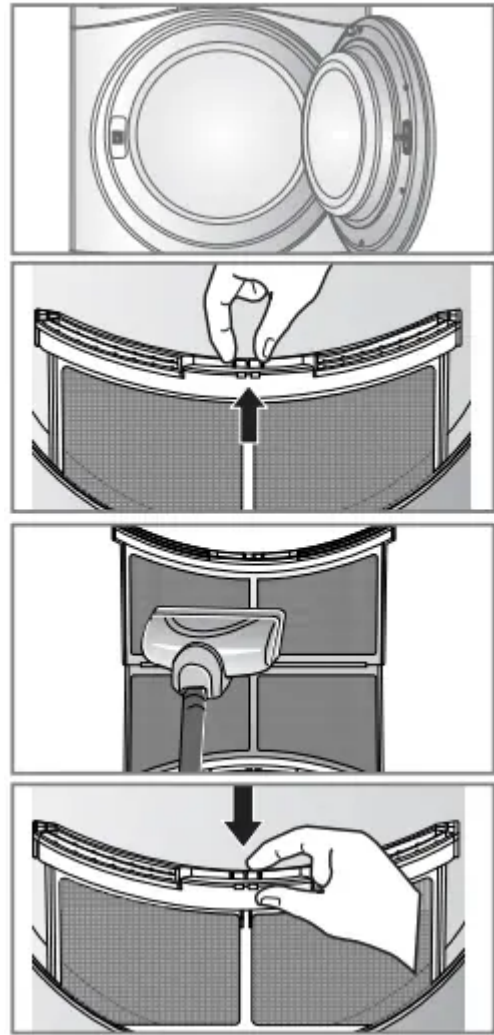
Clean filter after each use and check it before each use. It should also be cleaned if the “Clean Filter” light becomes illuminated and the buzzer sounds whilst the dryer is in operation.

Cleaning or emptying the filter will reduce drying times and energy consumption and lengthen the dryer life.

### CAUTION

- The lint trap has to be cleaned frequently, if applicable.
- Lint must not to be allowed to accumulate around the tumble dryer.
- Filter must be cleaned after every cycles are finished

1. Open the door.
2. Pull the filter out.
3. Clean the filter by using a vacuum cleaner or rinsing under the tap.
4. Replace the filter.
  - Push the filter all the way down to avoid interference with the door.
5. Close the door



### CAUTION

- After washing the filter please dry thoroughly.
- Lint must not be left to accumulate in the dryer.

**Note** If the filter is not in your dryer, you can not operate the dryer

### Clean Filter



Filter is clogged with lint and dust. Please clean the filter.

If “Clean Filter” is displayed during the operation, clean the filter promptly.

1. Cool the dryer down and follow the above steps.
2. Press the Start/Pause button.

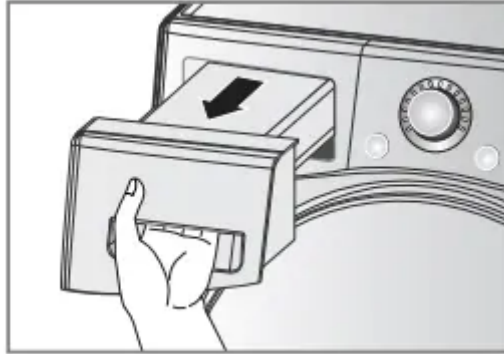
### Empty Water Container

Condensed water is collected in the water container.

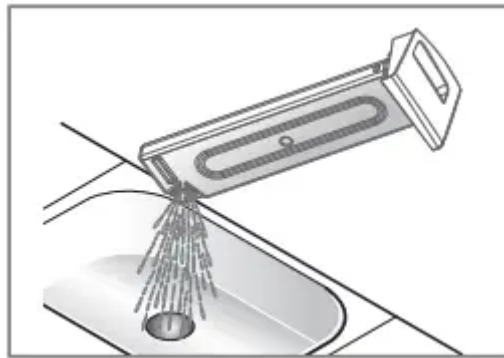
### **Empty the water container after every use.**

Not doing so will affect the drying performance. If the water container is full, the “Empty Water” lamp glows and the buzzer sounds while the dryer is operating. If this should occur, the water container needs to be emptied within the next hour.

1. Pull out the water container.



2. Empty water container in the sink.



3. Push it back into the dryer.
4. Press the Start/Pause button.

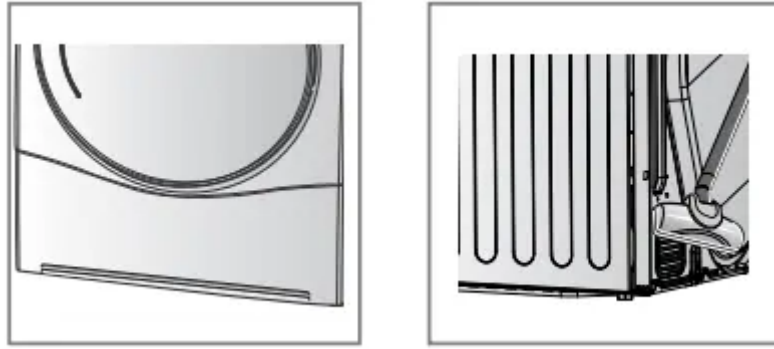
**Note** A high atmospheric temperature and a small room may both increase drying time as well as energy consumption.

**WARNING** Do not drink the condensed water.

**CAUTION** If the laundry is not spun at a high speed during washing, energy consumption and drying time will increase. In some instances, LCD window may display “Empty Water” and the dryer may stop because the water container is full.

### **Ventilation Grille and Cool Air Inlet Grille**

Vacuum the front ventilation grille 3-4 times a year to make sure there is no build up of lint or dirt that may cause improper air flow.



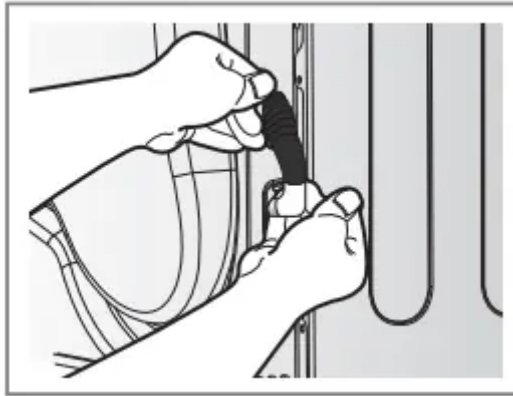
### Note

- Warm air is exhausted through the ventilation grille.
- Adequate ventilation should be provided to avoid the back flow of gases into the room from units burning other fuels, such as open fires.

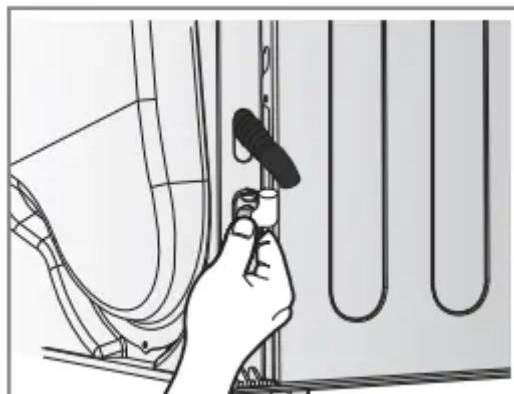
### Condensed Water Drain-out

Normally, condensed water is pumped up to the water container where water is collected until manually emptied. Water can also be drained out directly to a mains drain, especially when the dryer is stacked on top of a washing machine. With a connecting kit for the mains drain hose, simply change the water path and re-route to the drainage facility as below:

1. Take connecting kit out.



2. Separate water container hose from the kit.

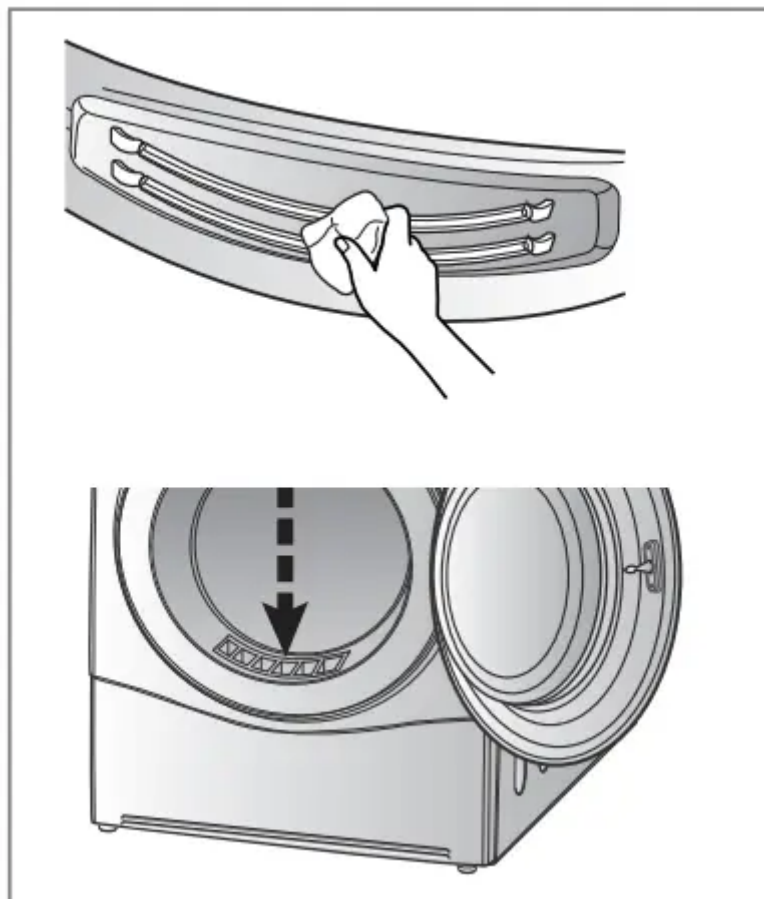


3. Connect drain hose to the kit.



### Moisture Sensor?


The device senses the moisture level of the laundry during operation, which means it must be cleaned regularly to remove any build up of lime scale on the surface of the sensor. Wipe the sensors inside drum. (as illustrated)

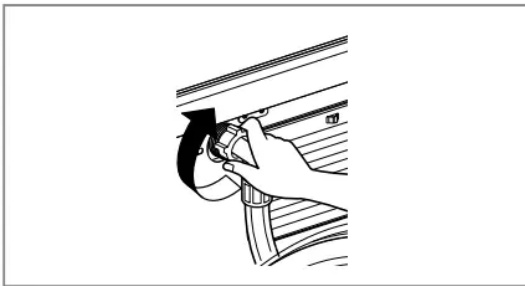
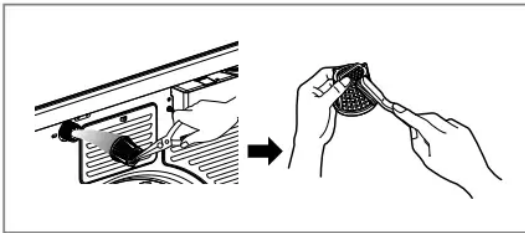
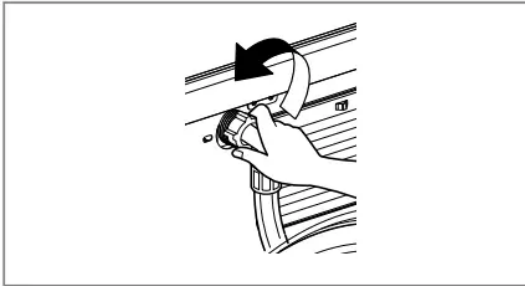
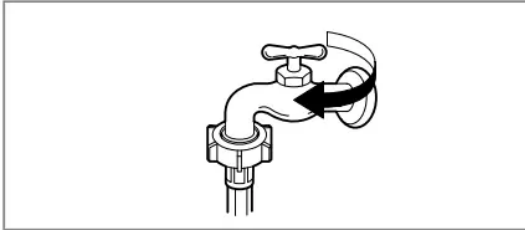


Before cleaning the dryer's interior, unplug the power cord to avoid electric shock hazards.

- Turn off the stopcock if the machine is to be left for any length of time (e.g. holiday), especially if there is no floor drain (gully) in the immediate vicinity.

## The water inlet filter

- "  " icon will be displayed on the control panel when water does not enter the dryer.
- If water is very hard or contains traces of lime deposit, the water inlet filter may become clogged. It is therefore a good idea to clean it from time to time.



1. Turn off the water tap.
2. Unscrew the water inlet hose.
3. Carefully remove the filter from inlet valve and clean the filter using a bristle brush.
4. Replace the filter and tighten up the inlet hose.

## Additional Tips for Smart Use

### Drying Guide

CYCLE		Capacity of dryer	Display Drying Time (Including Cooling Time)	
			Eco	Speed
Cotton	Extra	9 kg	200min	125min
	Very	9 kg	190min	120min
	Cupboard	9 kg	180min	115min
	Light	9 kg	170min	103min
	Iron	9 kg	160min	97min
Mixed Fabric	Very	4.5 kg	100min	53min
	Cupboard	4.5 kg	90min	48min
	Iron	4.5 kg	70min	41min
Easy Care	Cupboard	4 kg	70min	41min
	Iron	4 kg	60min	35min
Bulky Item		2 kg	120min	70min
Jeans		3 kg	110min	60min
Steam Hygiene		3 kg	56min	-
Steam Refresh		Dress Shirts Max.5EA	25min	-
Sports Wear		2 kg	50min	-
Quick Dry		3 kg	-	50min
Delicate		1.5 kg	48min	-
Wool		1 kg	29min	

### Woollens

Dry woollens on "wool" cycle. Be sure to follow fabric care label "symbols" first. Wool may not be completely dried from the cycle, so don't repeat drying. Pull woollens to their original shape and dry them flat.

### Woven and Loopknit Materials

Some woven and loopknit materials may shrink, depending on quality.

### Permanent Press and Synthetics

Do not overload your dryer. Take out permanent press items as soon as the dryer stops to reduce creases.

### Baby Clothes and Night Gowns

Always check the manufacturer's instructions.

### Rubber and Plastics

Do not dry any items made from or containing rubber or plastics such as: a) Aprons, Bibs and Chair Covers b) Curtains and Table Clothes c) Bathmats









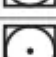





### Fiberglass

Do not dry fiberglass articles in your dryer. Glass particles left in the dryer could be picked up by your clothes the next time you use the dryer and irritate your skin.

### Fabric Care Labels

Clothes have their own wash care labels, so drying according to the wash care label is recommended. Not only that, the laundry must be sorted according to size and type of fabric. For the best drying performance and most efficient energy usage, do not overload the dryer.

**Below are fabric care labels.**

Symbols	Instructions
	Dry
	Tumble dry
	Permanent Press / Crease resistant
	Gentle / Delicate
	Do not tumble dry
	Do not dry
	High heating
	Medium heating
	Low heating
	No heat / air
	Line Dry / hang to dry
	Drip dry
	Dry flat
	In the shade

### Spare Parts

Spare parts that are required under the terms of warranty are provided free of charge. If the warranty has expired then spare parts must be purchased from the service center.

### Disposal of the Dryer

It is requested that you dispose of your dryer safely to protect your children and others from possible injury.

The door, lid and other protruding parts must be removed and the power cord should be cut off before safe disposal.



## **Service Contact**

If there is a problem with your dryer, first consult the Trouble Shooting Guide. If you cannot find the error and you are unable to resolve the problem, please contact the Service center.


A Customer Service representative will ask you the following questions:


1. Name, address and postcode.
2. Phone number.
3. Description of problem.
4. Model number and serial number of your dryer.
5. Date of Purchase.

## **Troubleshooting Guide**

### **Troubleshooting Tips**

To save you time and money, the following page will help answer your questions before service call.

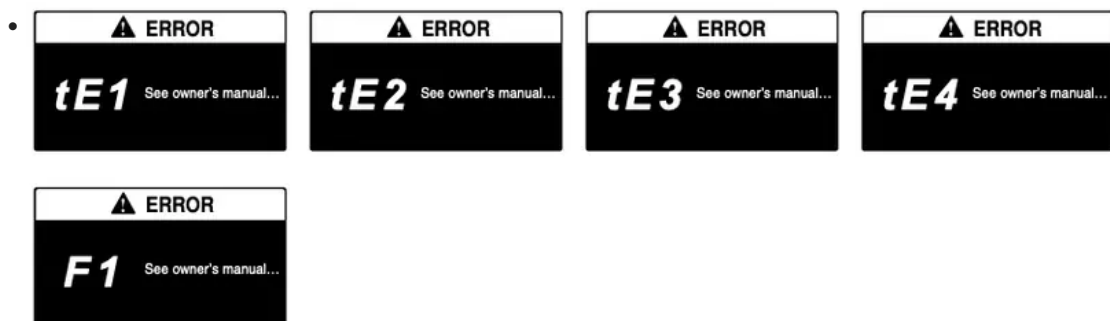
Questions	What to do
<p><b>Dryer won't run</b></p>	<ol style="list-style-type: none"> <li>1. Check dryer is plugged in.</li> <li>2. Check "Start/Pause" button is pressed.</li> <li>3. Check door is properly closed.</li> <li>4. Check room temperature is below 5°C.</li> <li>5. Check a fuse is blown or the circuit breaker is tripped and replace them.</li> </ol> <p>(Caution : electric dryers generally use two fuses or breakers)</p> <p>After emptying the water container and cleaning filter during operation, you must press Start/Pause button, then the dryer will operate again.</p>
<p><b>It takes a long time to dry</b></p>	<ol style="list-style-type: none"> <li>1. Filter should be cleaned after each load.</li> <li>2. Check water container is emptied.</li> <li>3. Select correct cycle setting for fabric type.</li> <li>4. Check air ventilation grille or rear vents of dryer are not obstructed.</li> <li>5. Check clothes are not excessively wet.</li> <li>6. Check the dryer is overloaded.</li> </ol>
<p><b>Dryer is operating but "Time Left" in the display doesn't change.</b></p>	<p>This is not a malfunction. Drying time is estimated and will recalculate throughout the cycle as it senses the dryness of the load.</p>
 <p>The icon shows a warning triangle with an exclamation mark, the text "Clean Filter", and a circular inset showing a clogged filter. Below the inset, it says "Filter is clogged with lint and dust. Please clean the filter."</p>	<p>Check filter is clean.</p>
<p><b>Clothes are covered in fluff</b></p>	<ol style="list-style-type: none"> <li>1. Check the filter is clean.</li> <li>2. Check all the items in the dryer are clean.</li> <li>3. Check all the laundry has been correctly sorted by fabric type.</li> <li>4. Check the dryer is not overloaded.</li> </ol>

	5. Check if there are any paper, tissues or other degradable items amongst the laundry and remove.
<b>The drying time is not consistent</b>	The drying time for a load will vary depending on the heat setting, the size of the load, the type of fabrics, the wetness of the clothes and the condition of the filter.
<b>Water is leaking</b>	Check the water hose or drain hose is properly connected.
<b>The clothes are creased</b>	Check the dryer is not overloaded. Try a shorter drying time and remove items whilst they still retain a slight amount of moisture. Use the anti-crease option.
<b>The garments have shrunk</b>	To avoid shrinkage, please follow the care and use instructions for your garment, as some fabrics shrink naturally when washed and should not be placed in a dryer.
	Please check the filter is in the dryer.

## Error Mode



: The door must be closed and Start/Pause button must be pressed for re-operation. If error message continues to occur, unplug the power cord and call the service center for advice.



: If error message continues to occur, unplug the power cord and call the service center for advice.



: Check the water tap properly open.

## Drum light does not work

- Contact the customer service center

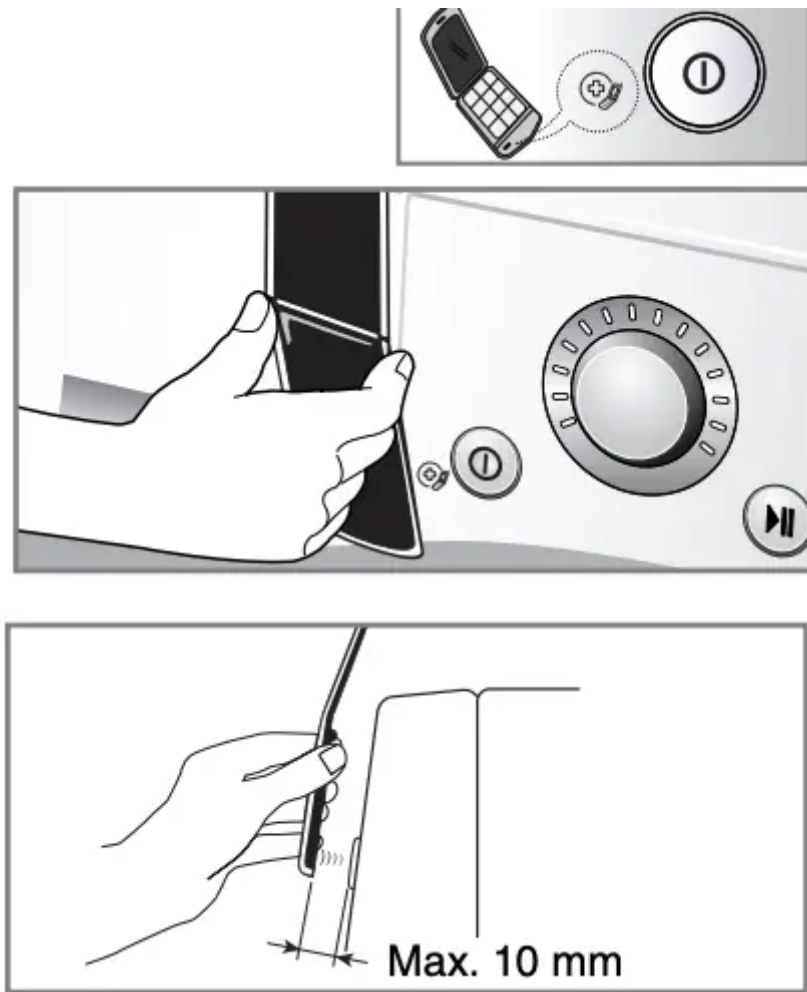
**Note** SmartDiagnosis™ function is available only for the products with a SmartDiagnosis™ mark. In case of a mobile phone with static option, the smart diagnosis function may not operate.

## Using SmartDiagnosis™

- Only use this feature when instructed to do so by the call center. The transmission sounds similar to a fax machine, and so has no meaning except to the call center.
  - SmartDiagnosis™ cannot be activated if the dryer does not power up. If this happens, then troubleshooting must be done without SmartDiagnosis™. If you experience problems with your dryer, call to customer information center. Follow the call center agent's instructions, and do the following steps when requested:
1. Press the Power button to turn on the dryer. Do not press any other buttons or turn the cycle selector knob.



2. When instructed to do so by the call center, place the mouthpiece of your phone close to the "SmartDiagnosis™" icon and Power button.



3. Press and hold the “▲ More)” button for three seconds, while holding the mouthpiece of your phone close to the "SmartDiagnosis™" icon and Power button.

4. Keep the phone in place until the tone transmission has finished. The display will count down the time.

- For best results, do not move the phone while the tones are being transmitted.
- If the call center agent is not able to get an accurate recording of the data, you may be asked to try again.

5. Once the countdown is over and the tones have stopped, resume your conversation with the call center agent, who will then be able to assist you using the information transmitted for analysis at the call to customer information center.

**Note** “Smart Diagnosis is a troubleshooting feature designed to assist, not replace, the traditional method of troubleshooting through service calls. The effectiveness of this feature depends upon various factors, including, but not limited to, the reception of the cellular phone being used for transmission, any external noise that may be present during the transmission, and the acoustics of the room where the machine is located. Accordingly, LG does not guarantee that Smart Diagnosis would accurately troubleshoot any given issue.”

**Warning**

This content is compiled from multiple sources and is provided for reference purposes only. It may not be complete or fully applicable to all situations. If you are unable to resolve your issue, please contact the product manufacturer or an authorized service provider for official support.

---

Document generated by [ManualsFile](#)