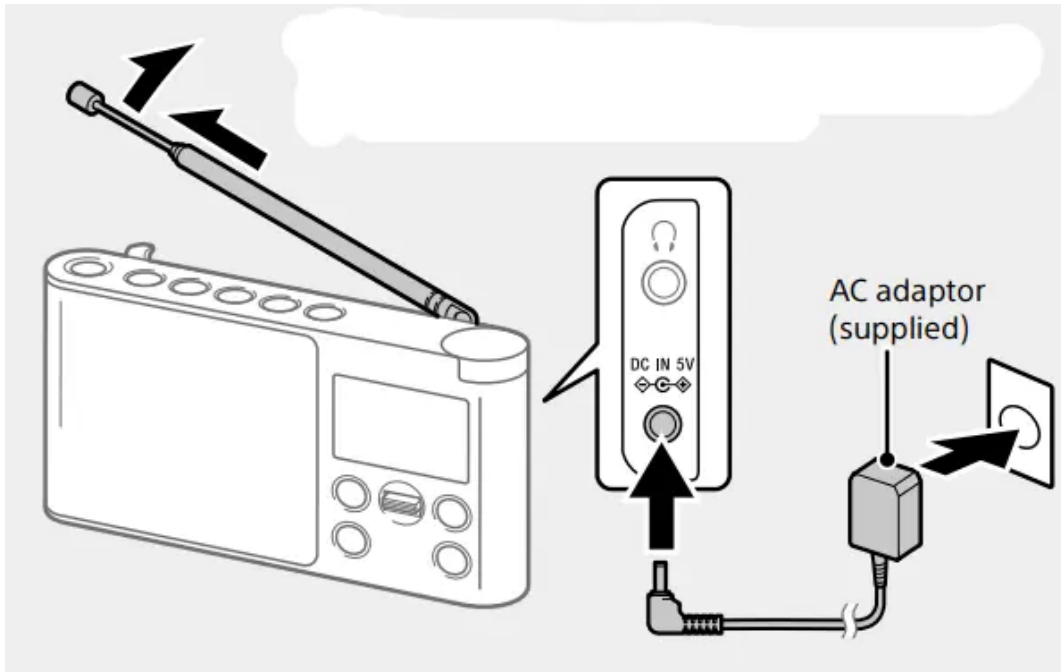


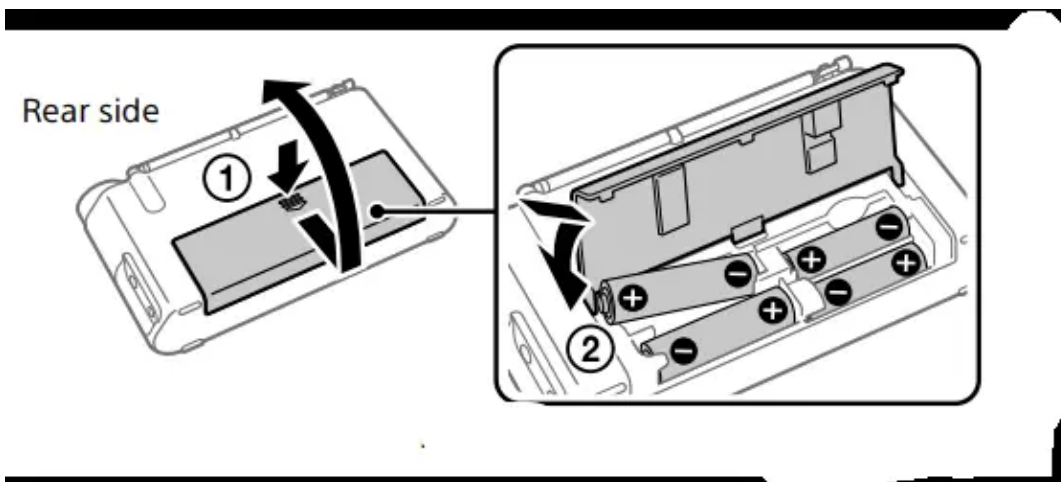
Operating Instructions Digital Radio


Getting Started

1. Connect the AC adaptor or insert four batteries. Then, extend the antenna.



To use the unit on batteries

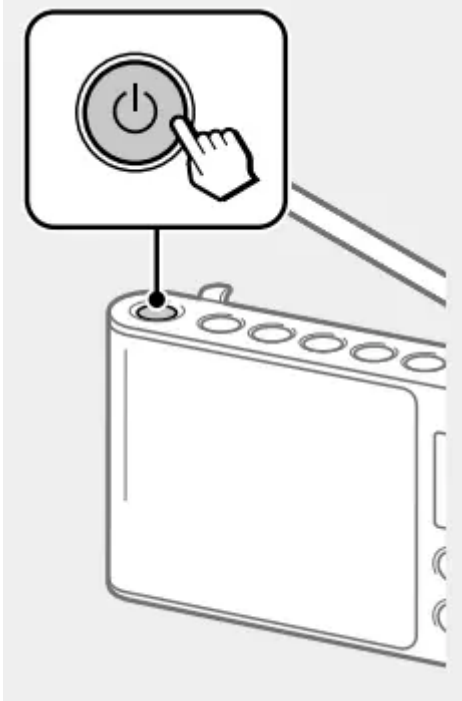


- To use the unit on battery power, unplug the connector of the AC power adaptor from the DC IN jack. The unit cannot be powered by batteries if the connector of the AC adaptor is plugged into the DC IN jack.
- Insert the  side of the battery first.
- Four LR6 (size AA) batteries (not supplied)

Tips

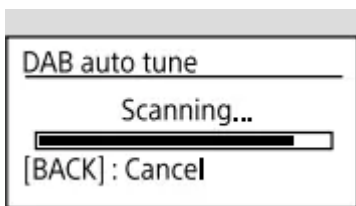
- The backlight will turn off if no operation is performed for about 30 seconds to minimize power consumption.
- Alkaline batteries are recommended. The use of manganese batteries is not recommended, since this type of battery has an extremely short usage time.

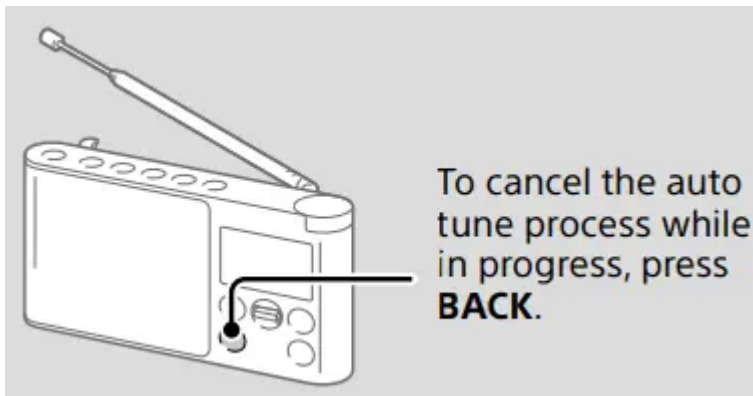
2. Turn on the radio.



When turning on the radio for the first time

- DAB auto tune will start automatically when the radio is turned on for the first time. After DAB auto tune is completed, the radio receives the first station in the DAB station list stored by DAB auto tune. If you want to cancel DAB auto tune process, press BACK.

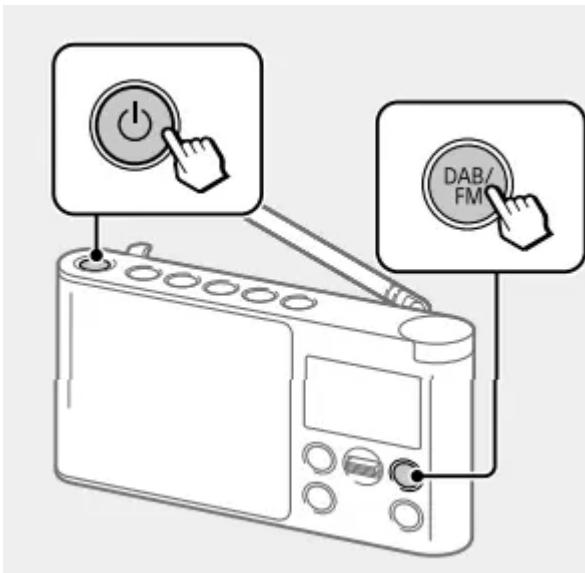




Tip: To perform DAB auto tune again later, see “To make a new DAB/FM station list” below.

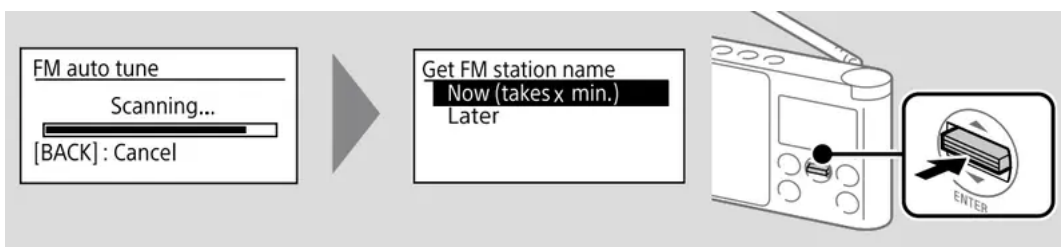
Listening to the Radio

1. Turn on the radio, and then select the DAB or FM function.



When selecting the FM function for the first time

- FM auto tune will start automatically when the FM function is selected for the first time.



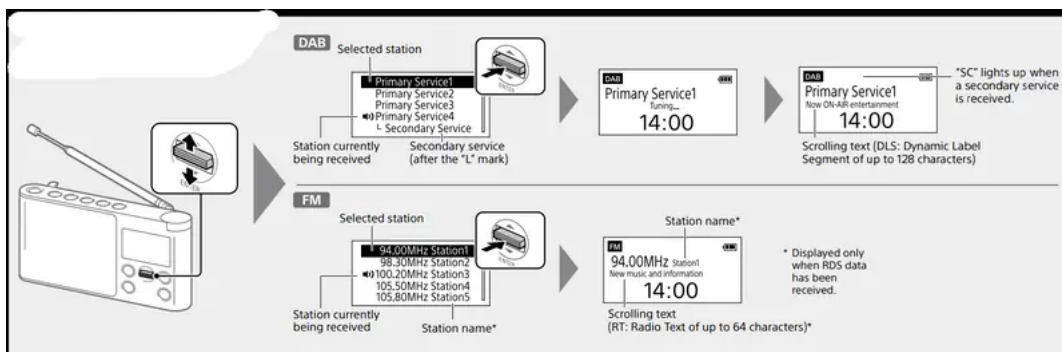
Tips

- Even if you select “Later” on the “Get FM station name” screen, FM station names will be received and stored in the unit while you are listening to broadcasts.

- FM station names may not be transmitted, depending on the station.

2 Select the desired station or service.

- Slide the jog lever up or down to make a selection.



About the FM auto tune process

- You can cancel the FM auto tune process that starts after the FM function is selected for the first time. However, if you want to tune to stations by station list, you will need to perform FM auto tune. For details on how to perform FM auto tune later, see “To make a new DAB/FM station list.”



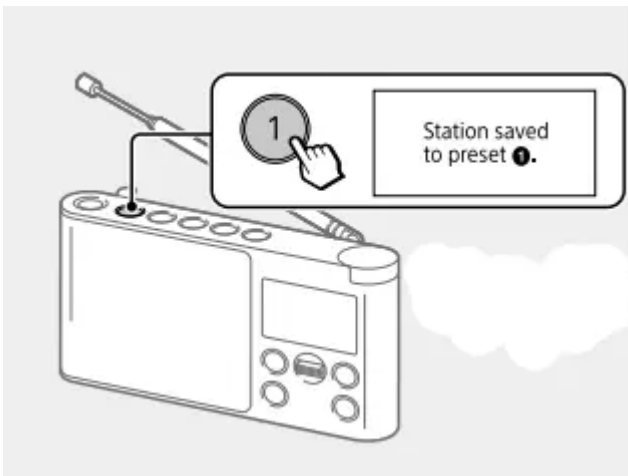
Assigning Stations to the Preset Buttons

Assign your favourite stations to the 5 preset buttons. You can assign up to 5 stations each for DAB and FM functions.

1. Tune to the station you want to preset. Follow the steps in “Listening to the Radio” above.



2. Press and hold the desired preset button (1 – 5) until “Station saved to preset x.” appears on the display.



- Example: Assigning a station to the preset button “**1**”
- To assign other stations to the rest of the preset buttons, repeat the same procedure

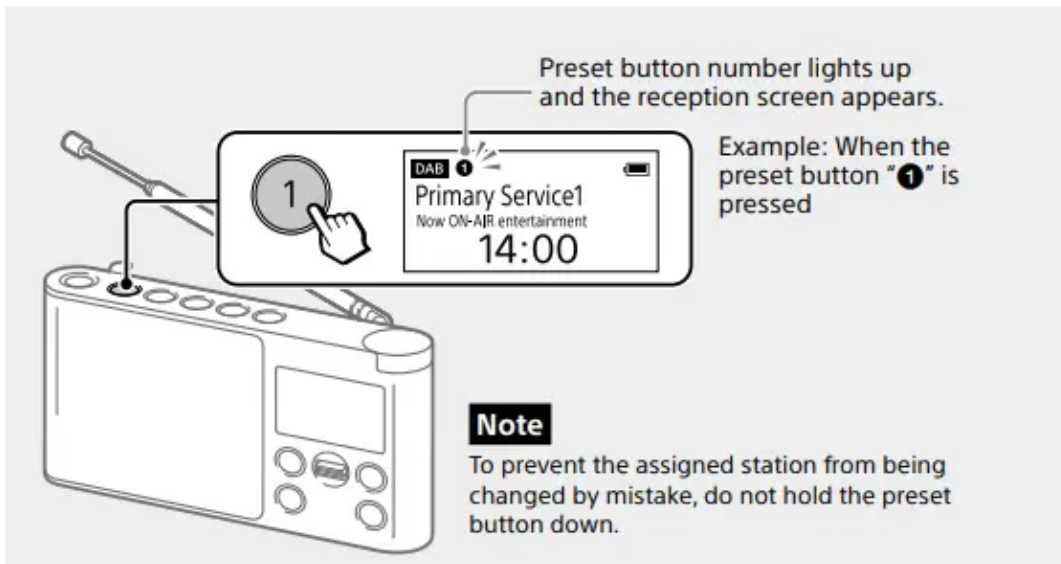
To change button assignment

1. Tune to a new station.
2. Press and hold the preset button you want to change until “Station saved to preset x.” appears on the display. The previously assigned station on the selected button will be replaced by the new one.

Tip: The button assignment information remains in the radio’s memory even after DAB and FM auto tunes are performed

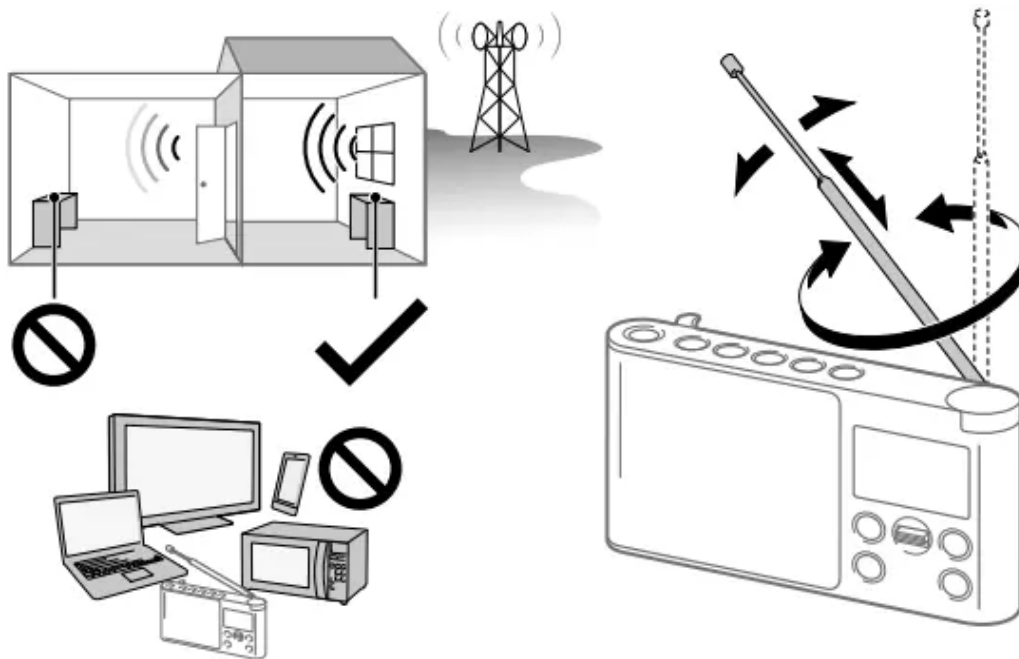
Listening to an Assigned Station

Press the desired preset button (1 – 5).

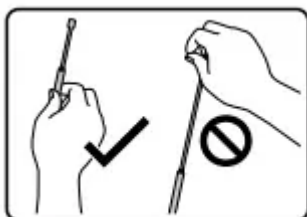


Note: To prevent the assigned station from being changed by mistake, do not hold the preset button down.

To improve DAB/FM radio reception

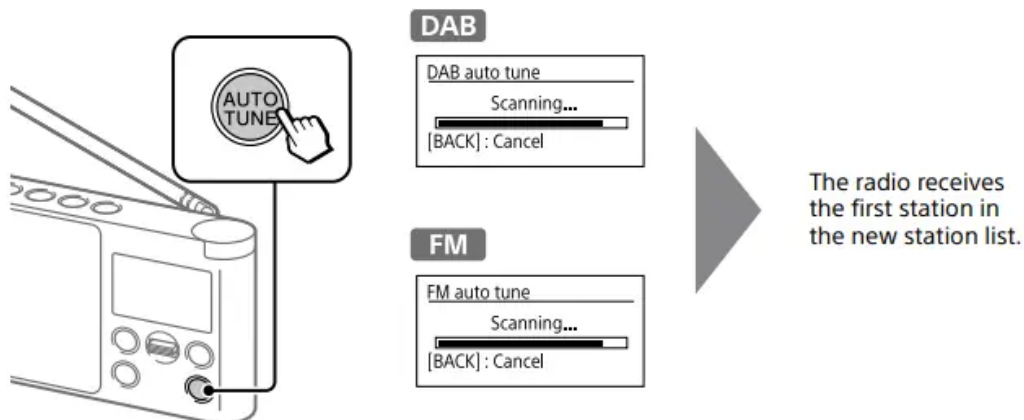


Note: When adjusting the antenna, be sure to hold it by the bottom part. The antenna may be damaged if you move it with excessive force while holding it by the upper part.



To make a new DAB/FM station list

- If you have moved to another region, perform DAB and FM auto tunes again. Select the DAB or FM function, then press AUTO TUNE.



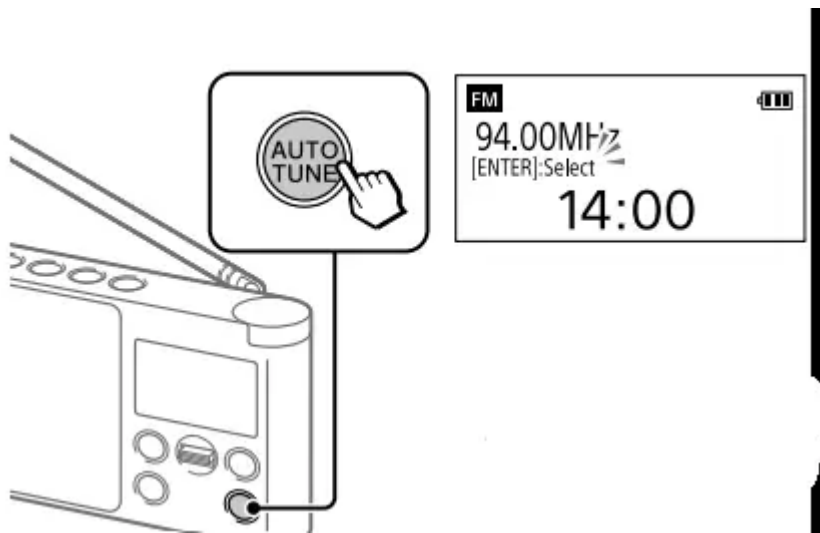
Notes

- The currently stored station list will be cleared once the auto tune process starts.
- When the setup menu is displayed, auto tune will not be performed even if AUTO TUNE is pressed.

Note on FM auto tuning: Be sure to select "By station list" in "FM tune mode" before starting FM auto tune. When "Manual tune" is selected, scan tuning will start instead. See "Setup menu options" for details.

To search FM stations (scan tuning)

- You can search receivable FM stations in 0.05 MHz steps. Select the FM function, then press AUTO TUNE. Be sure to select "Manual tune" in "FM tune mode" (See "Setup menu options.") before using this function.

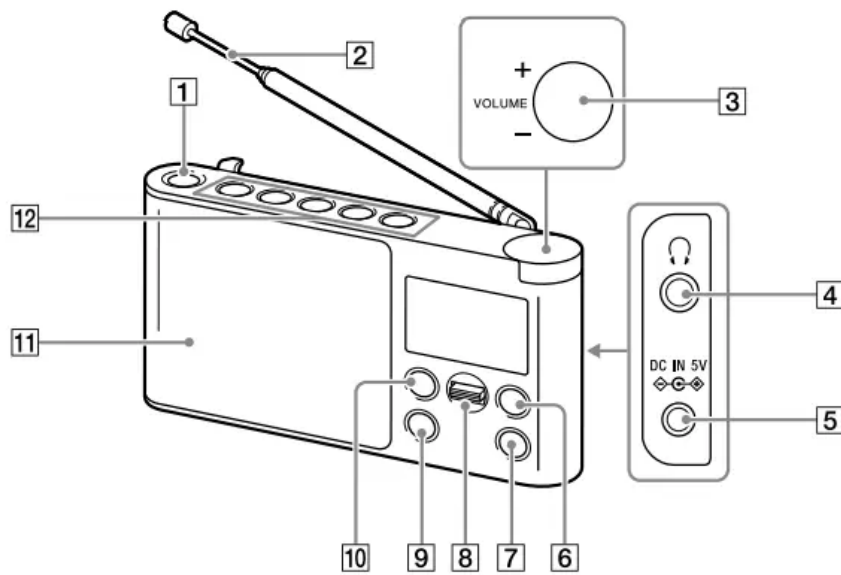


- If a receivable station is found, “[ENTER]:Select” appears on the display. Press the jog lever to receive the station. (If you do not press the jog lever within 3 seconds, the search will restart.)

Tips

- You can also search FM stations by sliding and holding the jog lever up or down after selecting the FM function.
- Press BACK to stop searching FM stations.

Guide to parts and controls

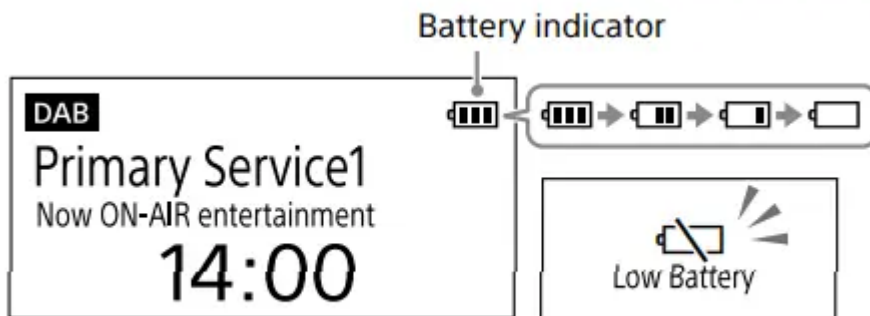


- | | |
|-------------------------------|----------------------------------|
| 1 ⏻ (power) button | 7 AUTO TUNE button |
| 2 Antenna | 8 Jog lever |
| 3 Volume control | 9 BACK button |
| 4 🎧 (headphones) jack | 10 MENU button |
| 5 DC IN jack | 11 Speaker |
| 6 DAB/FM button | 12 Preset buttons* |

* Preset button **3** has a tactile dot.

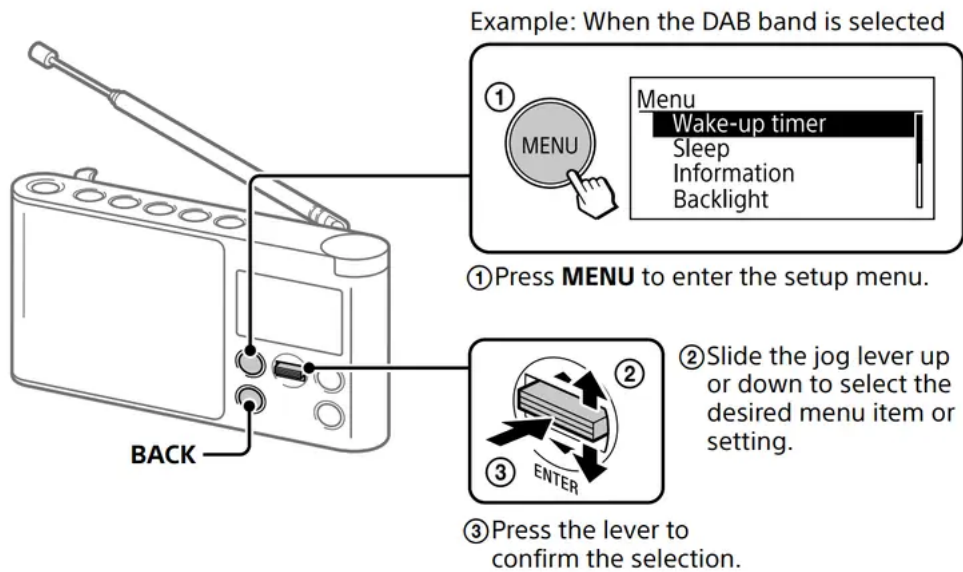
Battery indicator

- Battery indicator lights up when using the unit on batteries. The remaining battery power is displayed in 5 levels.



- Replace all the batteries with new ones when the low battery warning message flashes.

Setup menu options



- To go back to the upper menu level: Press **BACK**.
- To exit the setup menu: Press **MENU** again.

Wake-up timer

Be sure to connect the AC adaptor when using the wake-up timer.

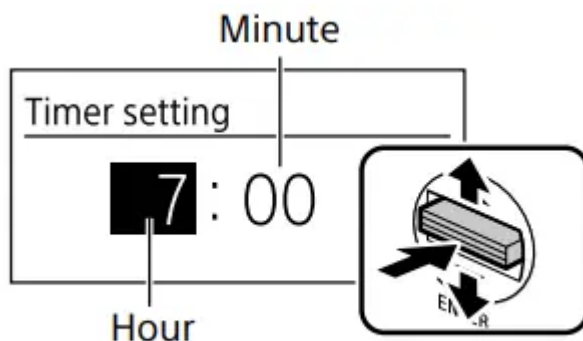
Wake-up timer cannot be used when using the unit on batteries.

Enable: Select this option when using the wake-up timer.

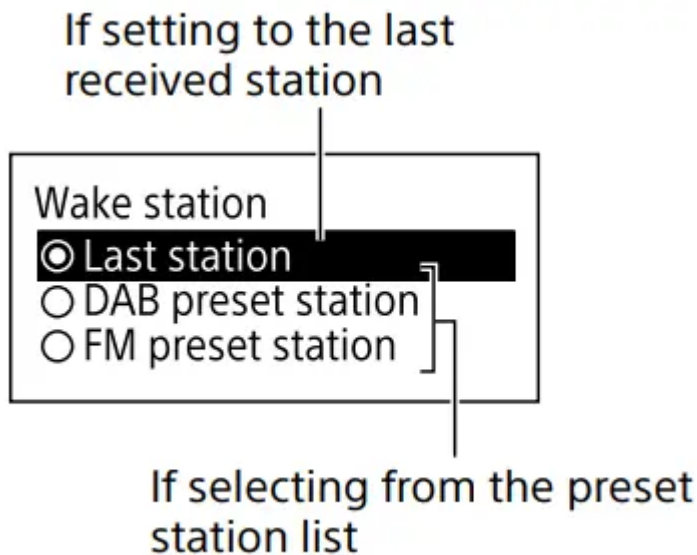
Disable: Select this option when not using the wake-up timer.

Wake-up timer setting: Select this option when setting the wake-up timer. You can set the wake-up timer as follow.

1. Select "Timer setting" and set the hour and minute.




- 2 Select "Wake station" and set a station.



After you have selected the setting, press BACK until the display returns to the “Wake-up timer setting” menu.

3. Select “Volume setting” and adjust the volume using the jog lever. After you have adjusted the volume, press BACK until the display returns to the “Wake-up timer” menu.

4. Select “Enable,” and then press the jog lever. When the wake-up timer is set, “” lights up on the display.

Sleep

- The radio automatically turns off after a set time has elapsed. Select the desired timer setting (minutes) from the following:
- Off (deactivated)/15 min./30 min./45 min./ 60 min.
- When the sleep timer is set, “SLEEP” lights up on the display

Information **DAB**

- Displays information for the station to which you are listening. Slide the jog lever up or down to scroll through the following information:
- Channel: Channel and frequency (See the DAB frequency table in “Specifications.”)
- Multiplex name: Ensemble label (up to 16 characters long)
- Service name: Station name PTY: PTY label (See “PTY (programme type)” in “Specifications.”)
- Bit rate: Bit rate
- Signal level: Displays the signal level for the DAB station to which you are listening, ranging from 0 (no signal) to 100 (maximum signal).

Note: If there is no ensemble label or no station name, the space for label or name will be blank. If there is no PTY label, “No PTY” will appear on the display

FM tune mode

- Select the tuning mode for FM.
- By station list: You can select the desired station from the list of FM stations stored by auto tune. When selecting this option, the display will change to the FM station list. Select the desired station from the list.
- Manual tune: You can manually tune to the desired FM frequency in 0.05 MHz steps. Slide the jog lever up or down to tune to the desired frequency. In “Manual tune” mode, you can use the scan tuning function (See “To search FM stations (scan tuning)” for details.).

Edit FM station list

- You can edit the FM station list.
- Get FM station name: Perform this operation when you want to receive RDS information such as station names. Select “OK” to start scanning for RDS data.

Notes:

- Set “FM tune mode” to “By station list” before you perform this operation.
- The currently stored RDS information will be cleared once scanning starts.
- It may take a long time to receive all the available RDS data.

Delete FM station: You can delete any unwanted stations from the FM station list.

1. Slide the jog lever up or down to select the station you want to delete, and then press the lever.
2. Slide the jog lever up or down to “OK,” and then press the jog lever.

Add FM station: When listening to a manually tuned station, you can add the station to the FM station list. Select “OK” to add the station to the list. Be sure to set “FM tune mode” to “Manual tune” before using this option.

Backlight

- Auto: The backlight will turn off automatically if no operation is performed for 30 seconds.
- Always ON: The backlight will be on all the time.

Time

- Set time: “Auto (DAB)” is set by default. This enables the clock to synchronize with the DAB data being received. Select “Time setting” to set the clock manually using the jog lever.
- 12H/24H: Select the clock display mode, 12-hour clock or 24-hour clock.

Beep

- Select “On” to activate the beep sound when you operate the radio.

DAB manual tune

- If DAB reception by DAB auto tune is poor, try manual tuning.
- Slide the jog lever up or down to select the desired DAB channel, then press the lever.
- The radio starts scanning for receivable stations in the selected channel.

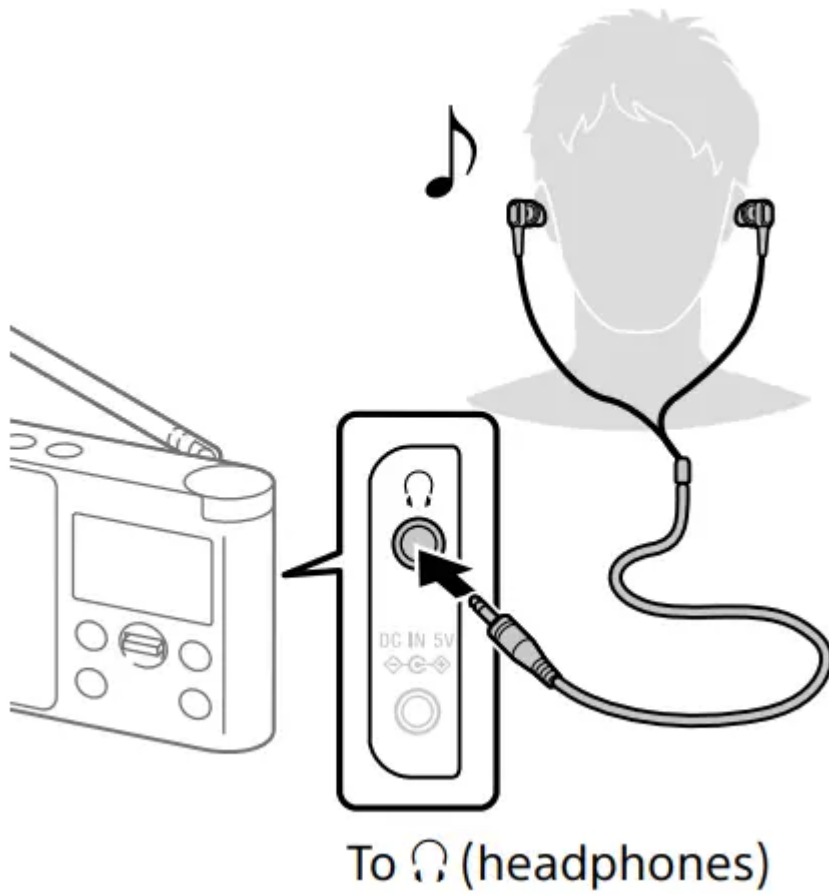
Tip: The new station received by manual tuning is stored in the DAB station list.

Initialize

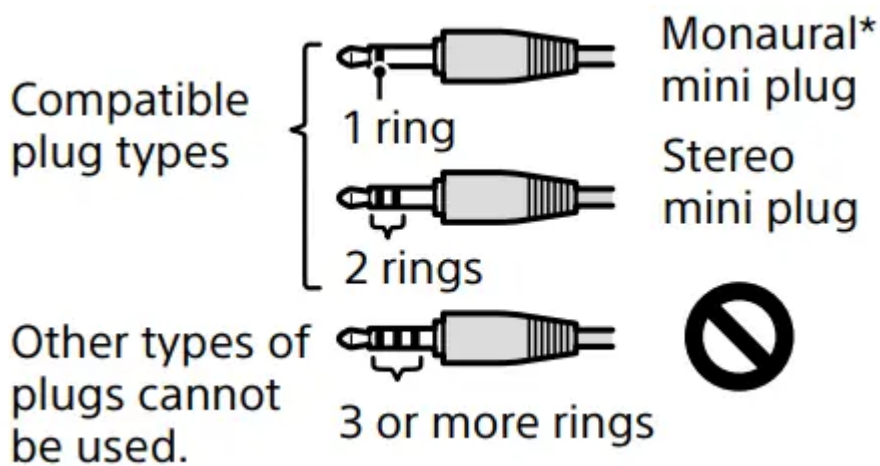
- Select “OK” to initialize the radio to the factory default settings. All settings, DAB and FM station lists and assignment information on the preset buttons will be deleted.

Listening through headphones

- Connect headphones that have a stereo or monaural* mini plug (not supplied)



Note: When connecting headphones to the unit, use headphones with a stereo (3-pole) or monaural (2-pole) mini plug. If you use headphones with another type of plug, there may be noise interference or no sound may be heard.



* When listening to stereo sound using monaural headphones, you will hear sound from the left channel only

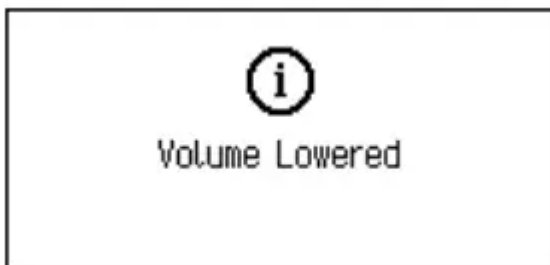


Maintaining the moderate volume level

- The radio limits the maximum volume to allow you to listen to the sound at a moderate volume level when using the headphones. When you try to adjust the volume to a level that exceeds the specified level, the “Check The Volume Level” message appears.



Note: The volume is lowered automatically and the “Volume Lowered” message appears, if you do not lower the volume for the specified period of time after the “Check The Volume Level” message appears.



About RDS Features

What is RDS?

- Introduced by the European Broadcasting Union (EBU) in 1987, the Radio Data System (RDS) allows information such as station names to be received via the 57 kHz sub-carrier signal of FM broadcasts. However, the availability of RDS data varies depending on the area. It therefore may not be always be possible to receive RDS information.

Using the RDS functions

- This radio supports the following RDS functions.

RDS function	Description
Station name display	Displays the station name you are listening to.
RT (radio text)	Displays the free-form textual information.

Precautions

- Operate the unit only on the power sources specified in “Specifications.” For battery operation, it is recommended that you use four LR6 (size AA) alkaline batteries. For AC operation, use only the supplied AC adaptor. Do not use any other type of AC adaptor.
- Failure to use the supplied AC adaptor may cause the unit to malfunction, as the polarity of the plugs of other manufacturers may be different.



- To use the unit on battery power, unplug the connector of the AC power adaptor from the DC IN jack. The unit cannot be powered by batteries if the connector of the AC adaptor is plugged into the DC IN jack.
- Use the unit within a temperature range of 0°C to 40°C. If it is used in temperatures higher than this range, the display may gradually turn black. If it is used in temperatures lower than this range, the display may change very slowly. (These irregularities will disappear and there will be no damage to the unit when the unit is used in the recommended temperature range again.)
- Avoid exposure to temperature extremes, direct sunlight, moisture, sand, dust or mechanical shock. Never leave in a car parked in the sun.
- Do not expose the unit to strong impact or excessive force. A glass material is used for the display in some models. If the glass chips or cracks, it may cause injury. In that case, stop using the unit immediately and make sure not to touch the damaged parts.
- Should any solid object or liquid fall into the unit, disconnect the AC adaptor and remove the batteries, and have the unit checked by a qualified personnel before operating it any further.

- Since a strong magnet is used for the speakers, keep personal credit cards using magnetic coding or spring-wound watches away from the unit to prevent possible damage from the magnetism.
- To clean the casing, use a soft dry cloth. Do not use any type of solvent, such as alcohol or benzine, which may damage the finish.
- Do not operate the unit with wet hands since it may cause a short circuit.
- Do not mix an old battery with a new one or mix different type of batteries.
- When you are not going to use the unit for a long time, remove the batteries to avoid damage from battery leakage and corrosion.
- Check if the batteries are inserted in the correct orientation (⊕ and ⊖) when the radio does not turn on after battery replacement.
- Batteries have a recommended use-by date for proper use. When using expired batteries, battery life will be extremely short. Check the use-by date on the batteries and if they are expired, replace them with new ones.
- Make sure not to splash water on the unit. This unit is not waterproof.
- Under certain circumstances, especially when the air is very dry, it is not uncommon to experience a discharge of static electricity, or shock, when your body comes in contact with another object, in this case the ear buds touching your ear(s). The energy from this natural discharge is extremely small and is not emitted by your product but rather a natural environmental occurrence.
- Listening at high volume levels over extended periods of time may harm your hearing. Be particularly careful when listening through headphones.
- Sudden loud output may harm your ears. Increase the volume gradually. Be particularly careful when listening through headphones.
- Do not use headphones while walking, driving a car or motorcycle, cycling, etc. A traffic accident may result.
- Do not use headphones in situations where being unable to hear ambient sound is dangerous, such as at railroad crossings, on train station platforms, and at construction sites.
- Excessive sound pressure from earphones and headphones can cause hearing loss.

If you have any questions or problems concerning your unit, please consult your nearest Sony dealer.

Troubleshooting

Should any problem persist after you have made the following checks, consult your nearest Sony dealer.

Display is dim, or no indication is displayed.

- The radio is being used in extremely high or low temperatures or in a place with excessive moisture.

Very weak or interrupted sound, or unsatisfactory reception.

- If you are in a building, listen near a window.
- Extend the antenna and adjust the length and the angle for best reception. See “To improve DAB/FM radio reception” for details.
- If a mobile phone is placed close to the radio, a loud noise may be heard from the radio. Keep the phone away from the radio.

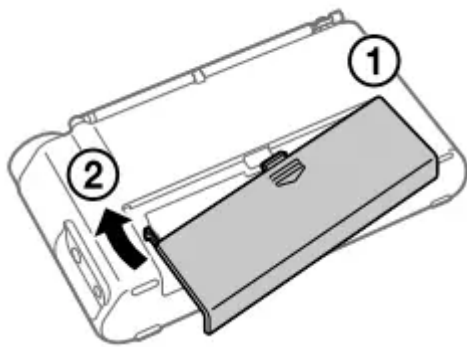
Battery gets exhausted very quickly.

- Check the estimated battery life described in “Specifications” and be sure to turn off the radio when not using it.

A desired station cannot be received when a preset button is pressed.

- You may have held down the preset button to which the station was assigned, causing the station to be replaced by a new one. Assign the desired station again.
- Preset buttons cannot be used when the setup menu is displayed.

The battery compartment lid has come off.



- The battery compartment lid is designed to come off when opened with excessive force. Insert the right hinge of the lid into the right hole of the compartment (1), then insert the left hinge into the left hole (2).

If maintenance service is performed

- All user-configured settings, such as preset radio stations, the timer settings, and the clock, may be initialized. Please note your settings in case you need to configure them again.

Messages

Low Battery (flashes, and the power is turned off)

- The batteries are exhausted. Replace all the batteries with new ones.

No preset

- No station in the selected band (DAB or FM) has been preset to the pressed button.

Service not available

- The selected station or service is currently not broadcasting.

Warning

This content is compiled from multiple sources and is provided for reference purposes only. It may not be complete or fully applicable to all situations. If you are unable to resolve your issue, please contact the product manufacturer or an authorized service provider for official support.