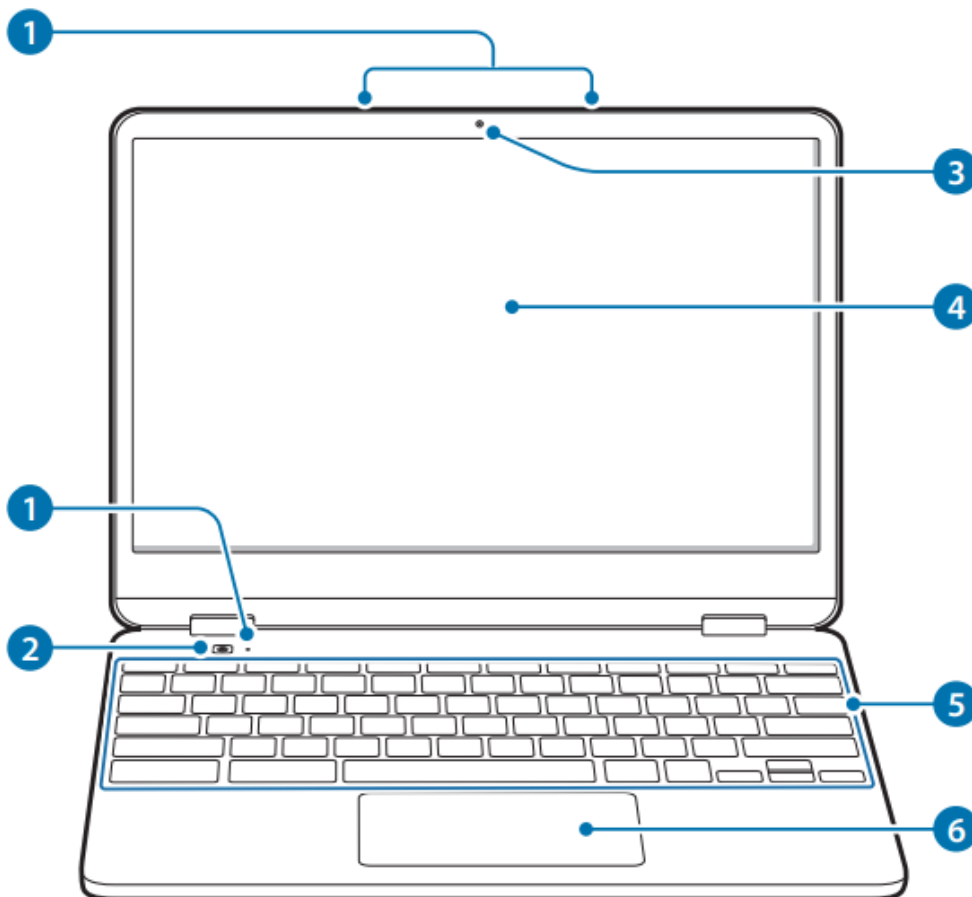


Layout

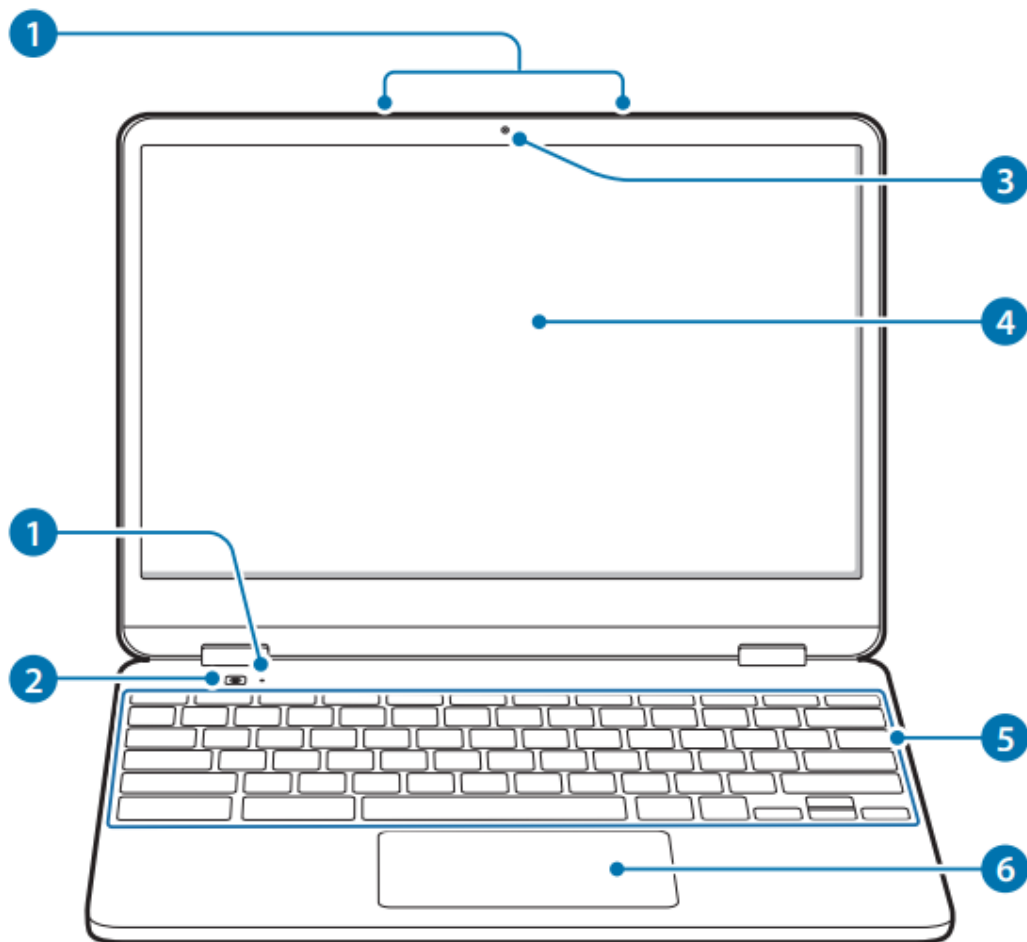
Notes:

- Features or options may differ depending on the model.
- The items marked as optional may not be provided or may be provided in different locations.
- Since some storage space is reserved for system recovery and operations, the available storage space may be less than the actual capacity.

Front view

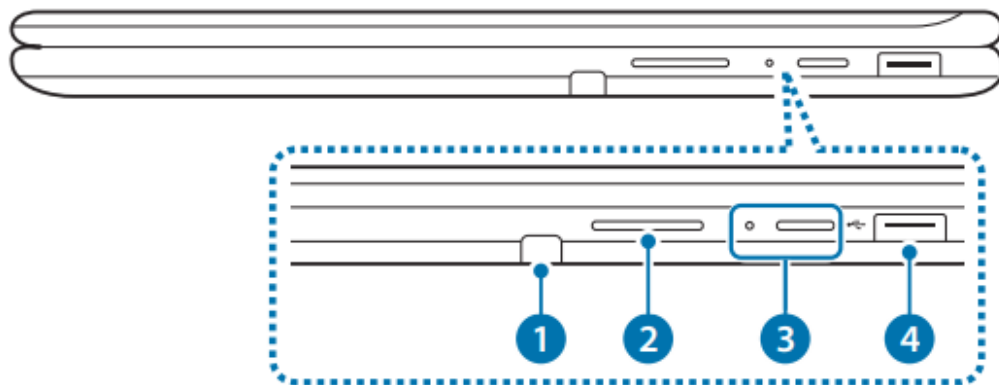



Number/ Name	Description
<p>1 Microphone</p>	<ul style="list-style-type: none"> You can use the built-in microphone.
<p>2 Keyboard deck camera</p>	<ul style="list-style-type: none"> Using this camera, you can take still pictures and record video of the subjects located in front of the camera. Fold the LCD panel behind the keyboard first to use the camera. You can use this camera while holding the computer like a tablet or setting it down on a flat surface. Face this camera toward the subjects and check the preview on your LCD screen.
<p>3 Front camera</p>	<ul style="list-style-type: none"> Using this camera, you can take still pictures and record video.



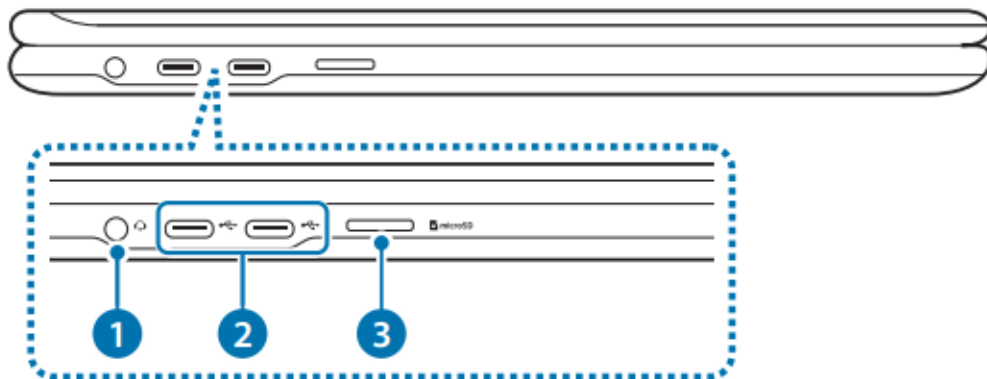
Number/Name	Description
4 LCD/ Touch screen	<ul style="list-style-type: none"> • The screen's images are displayed here. • Recognizes touch interactions (only for touch screen models).
5 Keyboard	<ul style="list-style-type: none"> • Enter text or control computer functions.
6 Touchpad	<ul style="list-style-type: none"> • Moves the cursor and selects options. • Functions as a mouse.




Right view



Number/Name	Description
1 PEN PEN	<ul style="list-style-type: none"> Remove the PEN from the slot and perform touch actions on the screen.
2 Volume button button	<ul style="list-style-type: none"> Adjusts the volume level.
3 Power button/ Power LED LED	<ul style="list-style-type: none"> Turns the computer on and off. Shows the operating status of the computer. <ul style="list-style-type: none"> Blinks red: Pre-charging Red: Charging Green: Fully charged Blue: Turned on
4 USB 3.0 port 	<ul style="list-style-type: none"> Connect various peripheral devices, such as a mouse, camera, or keyboard. <p>Note: Data transfer speeds can vary among different USB devices and system configuration.</p>

Left view

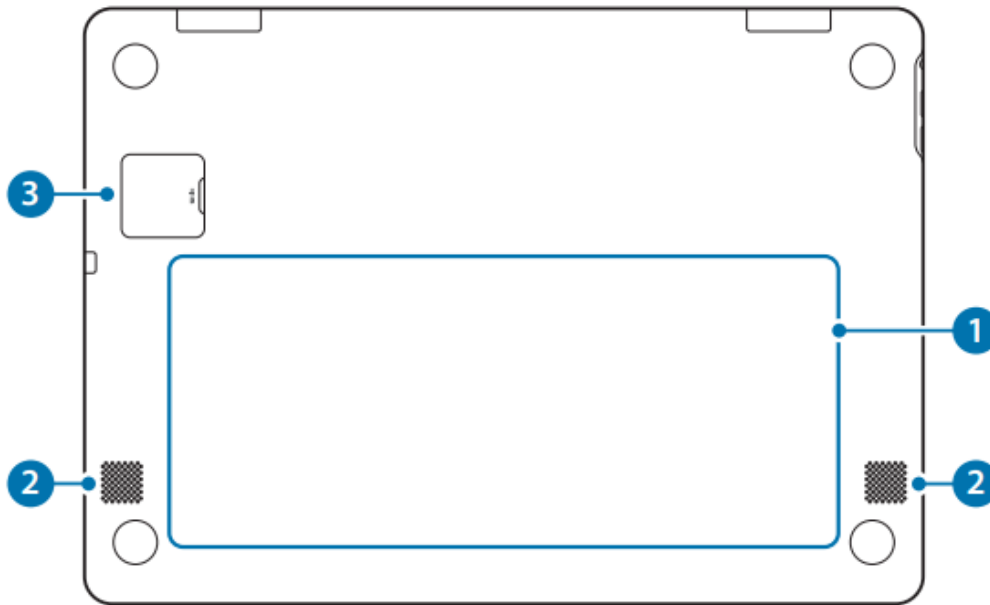



Number/Name	Description
<p>1 Earpiece/ Headset jack</p> 	<ul style="list-style-type: none"> • Connect an earpiece or a headset to the computer to listen to audio.
<p>2 USB- C™port</p> 	<ul style="list-style-type: none"> • The USB-C™ port can be used to connect and charge a USB-C™ device, or connect to an external display device. <p>Note: Purchase an adapter separately to connect to an external display.</p>
<p>3 Memory card slot</p> 	<ul style="list-style-type: none"> • Insert a memory card into the slot.

About the chargeable USB port

- It may take longer to charge the battery when charging a USB device.
- The battery power level may be reduced when charging a USB device while the computer is powered by the battery.
- The charging status of the USB device is not displayed on the computer.
- This feature may not be available on some USB devices.
- When the computer is turned off, the device connected to the USB port is not charged.

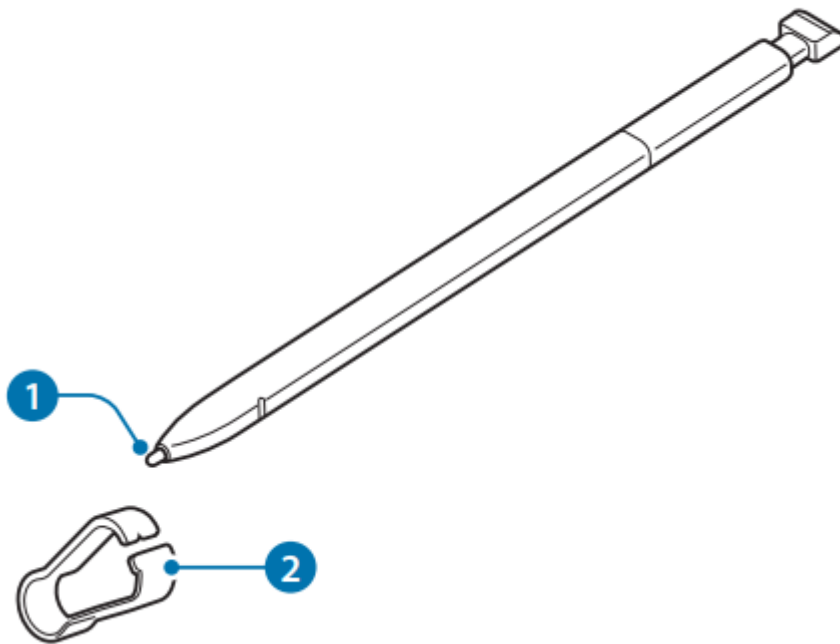
Bottom view



Number/ Name	Description
1 Internal battery	<ul style="list-style-type: none">• Provides power to the computer when not connected to an AC adapter.• To remove or replace the internal battery, take it to a Samsung Service Center. You will be charged for this service.
2 Speaker	<ul style="list-style-type: none">• Sound is emitted from the speakers.
3 SIM card slot 	<ul style="list-style-type: none">• Insert the SIM card into the slot.

Note: If the bottom of the computer is replaced, the model name, serial number, and some logos will no longer be present. For more information, contact the Samsung Service Center to request assistance.

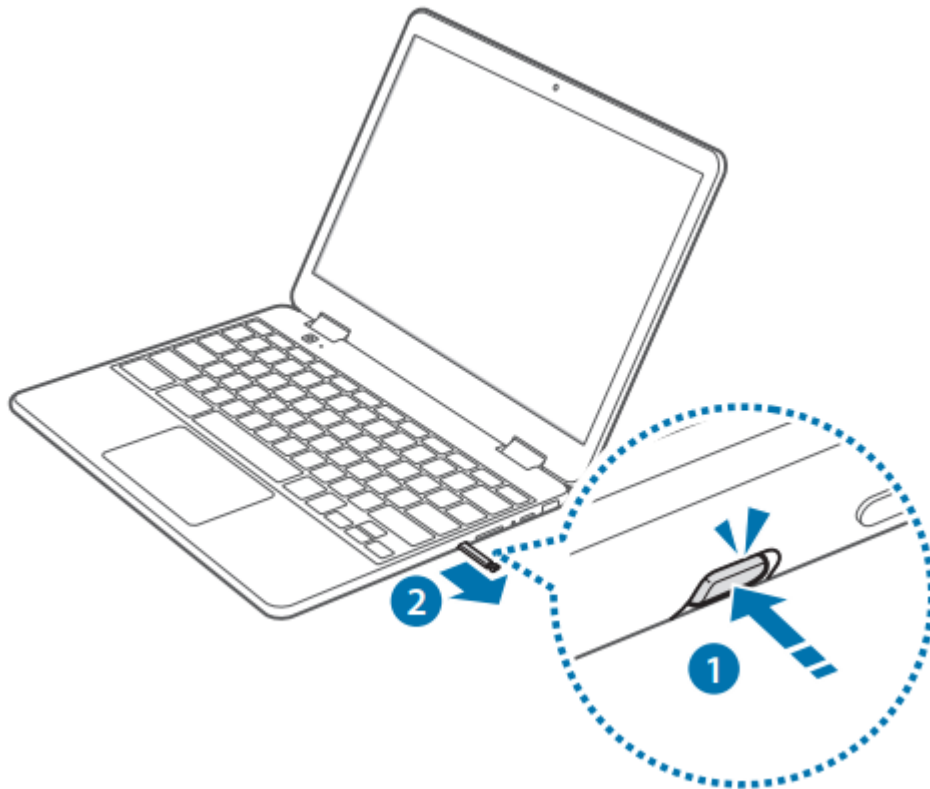
PEN



Number/ Name	Description
1 PEN nib	<ul style="list-style-type: none">• Use the PEN to write, draw, or perform touch actions on the screen..
2 Tweezers	<ul style="list-style-type: none">• Remove the PEN nib with the tweezers when replacing the nib.

Detaching the PEN

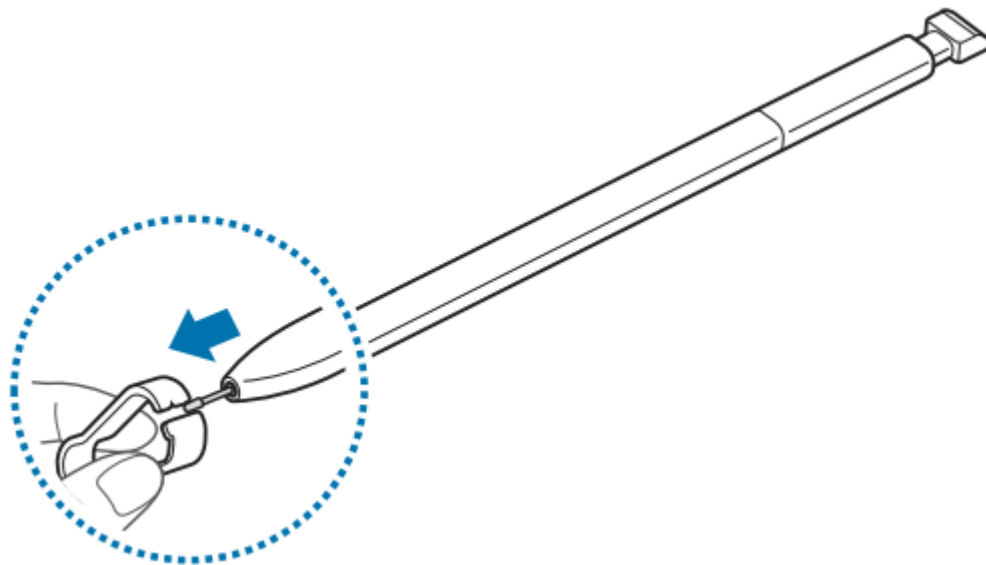
Press the end of the PEN to disengage it. Then, pull the PEN from the slot. To store the PEN, push it back into the slot until you hear it click.



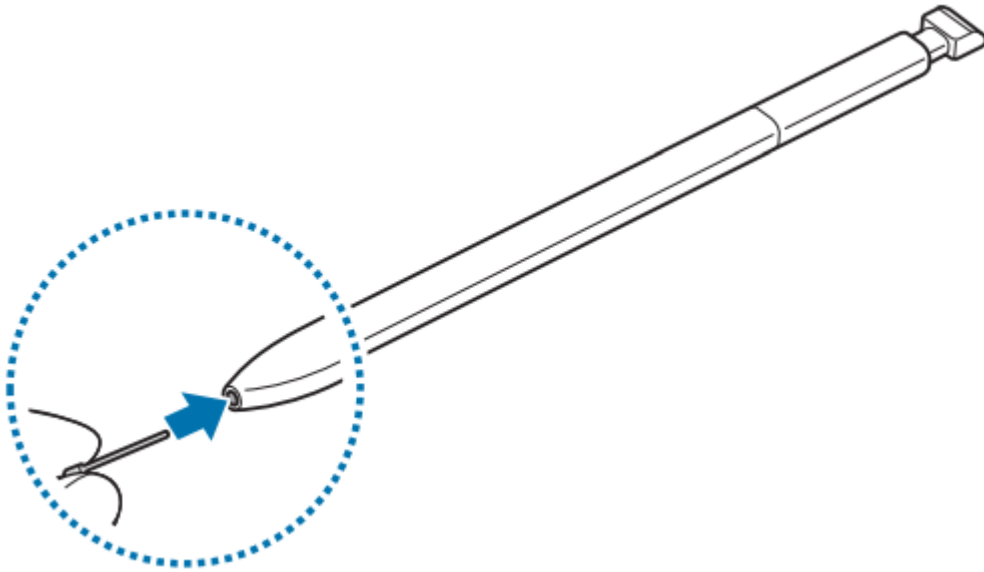
Replacing the PEN nib

If the nib is dull, replace it with a new one.

1. Firmly hold the nib with the tweezers and remove it.



2. Insert a new nib into the PEN



Caution: Be careful not to pinch your fingers with the tweezers.

Warning:

- Do not reuse old nibs. Doing so may cause the PEN to malfunction.
- Do not press the nib excessively when inserting the nib into the PEN.
- Do not insert the round end of the nib into the PEN. Doing so may cause damage to the PEN or your device.
- Do not bend or apply excessive pressure with the PEN while using it. The PEN may be damaged or the nib may be deformed.

Note:

- If you use the PEN at sharp angles on the screen, the device may not recognise the PEN actions.
- For more information about the PEN, visit the Samsung website.
- If the PEN is not working properly, take it to a Samsung Service Center.

Basics

Using the computer as a tablet

You can use the computer as a tablet by folding the LCD panel behind the keyboard. Open the LCD panel and rotate it away from the keyboard until it touches the bottom side of the computer.

When using the computer as the tablet, tap  on the taskbar to view the currently running apps.

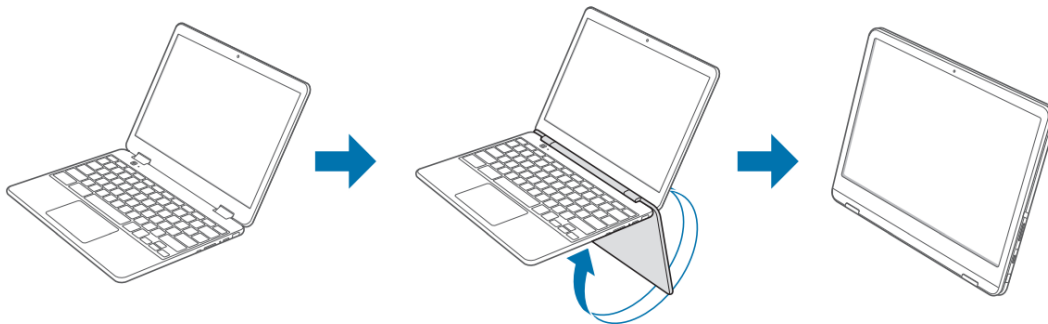
Note:

- **When the LCD panel is tilted past the transition point**

The keyboard and touchpad will automatically be locked and will not function. The display will rotate automatically depending on the computer's orientation.

- When the screen is turned off while using the computer as a tablet, press the Volume button to unlock the screen. When the computer is in power saving mode, press the Power button to unlock the screen.

Warning: When storing the computer in a bag or carrying it, close the LCD panel to protect the computer.



Using the touch screen

Use your fingers on the touch screen to perform actions.

Touch screen gestures

Tapping

To select menus, options, or applications, tap the touch screen.



Double-tapping

To open files or items, double-tap the touch screen.



Tapping and holding (right-clicking)

To use additional options of an item, tap and hold it on the touch screen.



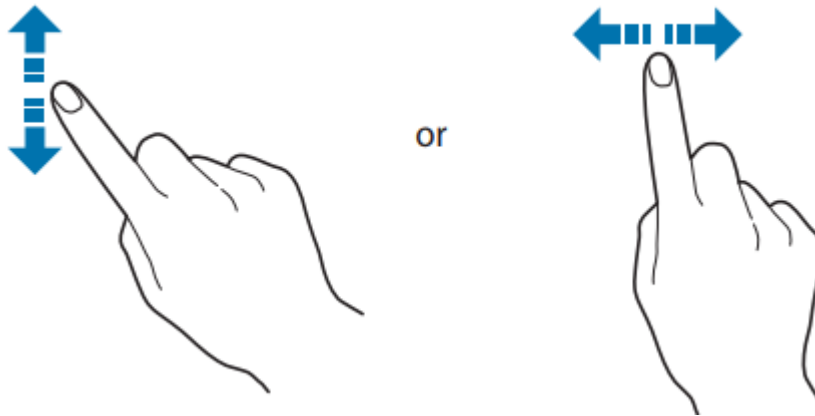
Dragging

To move an item to another location, tap and hold it, and then drag it on the touch screen to the desired location.



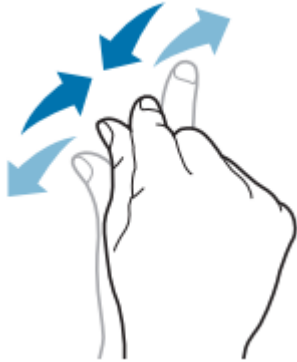
Scrolling

To scroll up, down, left, or right, swipe on the touch screen.



Spreading and pinching

To zoom in, spread two fingers apart on an image or text. Pinch to zoom out.



Warning:

- Do not subject the touch screen to severe impacts or press it with sharp objects. Doing so may damage the touch screen.
- Do not allow the touch screen to come into contact with other electrical devices. Electrostatic discharges can cause the touch screen to malfunction.
- Do not expose the touch screen to water. The touch screen may malfunction in humid conditions or when exposed to water.
- Do not spray liquid cleansing solutions directly onto the touch screen. The solution may enter the touch screen or cause undesired operation. To clean the screen, dampen a cloth with solution and gently wipe the screen. Do not use solutions or cloths that contain abrasive materials, as they may damage the touch screen.
- Do not damage the edges of the touch screen. Doing so may damage the touch screen.
- Leaving the touch screen idle for extended periods may result in afterimages (screen burn-in) or ghosting. Turn off the touch screen when you are not using the computer.
- Make sure your hands are clean and dry before using the touch screen. Remove any moisture from your hands before using the touch screen.

- Do not expose the computer to foreign substances. Doing so may cause the touch screen to malfunction.

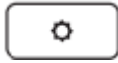


Note:

- Very light touches on the touch screen may not be recognized.
- Precisely tap items on the touch screen for the best results.
- The touch screen sensors are located on the edges of the touch screen. Therefore, do not cover the edges of the touch screen with protective covers or accessories.
- Touch screen gestures are available for touch screen models running Windows and work only with some applications.

Settings & Upgrade

LCD brightness

Adjust the LCD brightness to reduce eye strain and save power.

- Adjust the LCD brightness by pressing the  key to decrease brightness or the  key to increase brightness.
- Whenever you press the  key, the LCD brightness increases by one level

Note: LCD bad pixels principle of computer Samsung observes the specifications regarding strict quality and reliability of LCD. But in spite of that, it is inevitable that there might be a small number of bad pixels. A large number of bad pixels can cause problems in appearance, but a small number of pixels doesn't affect the computer performance. Therefore Samsung observes and manages the following dot principles:

- Bright dot: 2 or less
- Black dot: 4 or less
- Combination of Bright and Dark: 4 or less

Warning: Instructions for Cleaning the LCD Clean the LCD panel with a soft cloth lightly moistened with computer cleansing detergent moving in one direction. Cleaning the LCD panel with excessive force can damage the LCD.

Volume

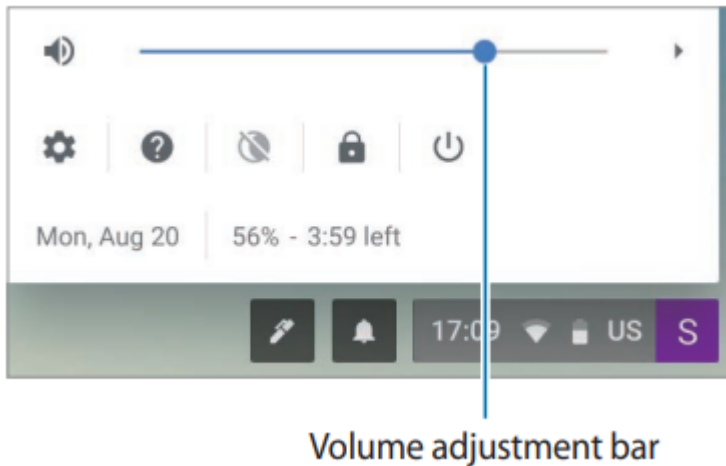
Adjust the system volume or sound volume when playing music or video.

Controlling volume using the keyboard

Press the Volume button on the right side of the computer to adjust the volume.

Controlling volume using the taskbar

1. Select the account icon on the taskbar.
2. Drag the adjustment bar to the desired volume.



Battery

Fully charge the battery using the AC adapter before using the computer for the first time.

- Use only Samsung-approved AC adapters, batteries, and cables. If you use unapproved adapters, the battery cannot be charged or it may explode or damage the computer.
- Incorrectly connecting the charger may cause serious damage to the computer.
- This computer is equipped with an internal battery. The battery is not user-serviceable or user-replaceable.
- To safely remove or replace the battery, take the device to a Samsung Service Center. You will be charged for this service.
- You can use the computer while it is charging, but the battery charging time may increase. If the battery temperature rises too much, the charging may stop as a safety measure.

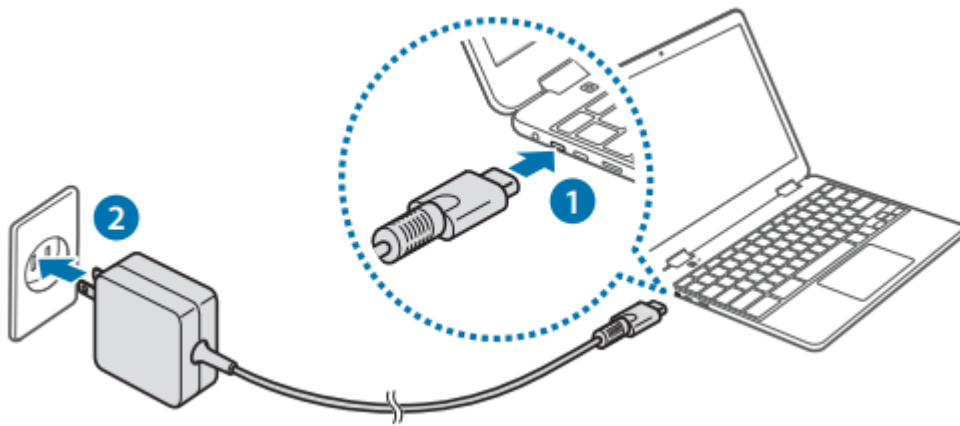
Note: To restore the battery power after cutting it, connect the AC adapter.

Charging the battery

Fully charge the battery using the AC adapter before using the computer for the first time, or when the computer is completely discharged.

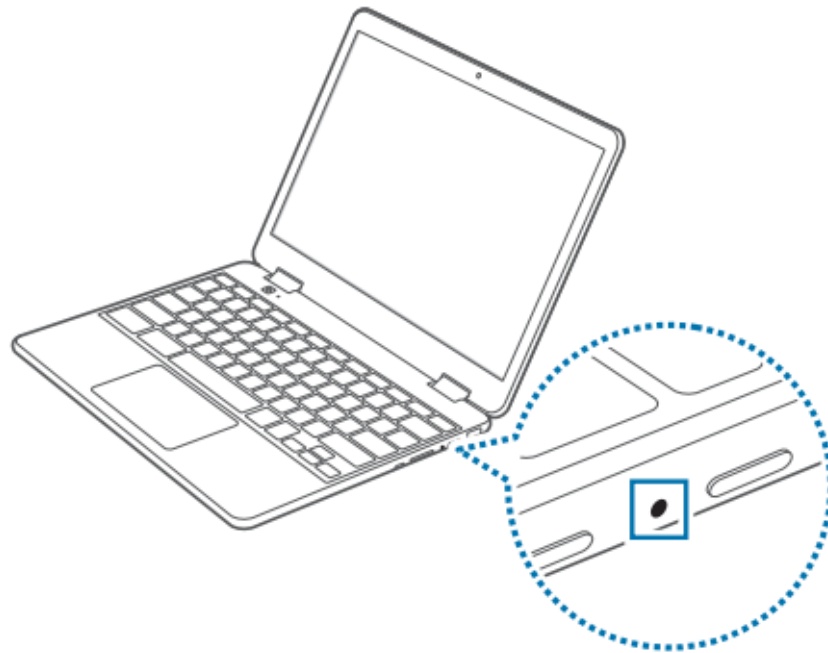
1. Connect the AC adapter to the USB-C™ port of the computer.

2. Plug the power cable into an electric socket.



Note: If the battery is fully discharged, the computer will not turn on immediately with the AC adapter. A minimum level of battery power will be charged slowly for safety while the Power LED blinks red. You can turn on the computer after the Power LED stops blinking.

3. When the battery is fully charged, the power LED turns green. Disconnect the AC adapter from the computer.

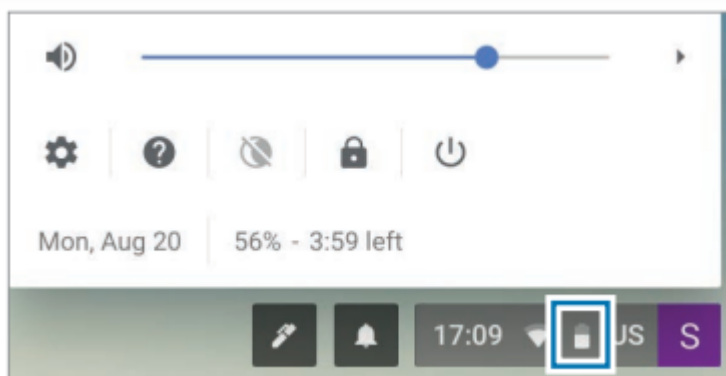


Power LED	Status
	• Blinks red: Pre-charging
	• Red: Charging
	• Green: Fully charged
	• Blue: Turned on

4. Unplug it from the electric socket.

Battery status

Select the account icon on the taskbar to view the current battery charge.



Battery usage time

Batteries are replaceable items and over time the battery's capacity to hold a charge and its power level is reduced. If a battery can only hold its charge for half of the time that it could when new, it is recommended to purchase a new, replacement battery

Appendix

Product specifications

The system specifications may differ depending on the derived model. For detailed system specifications, refer to the product catalog.

Item	Specification
Operating environment	<ul style="list-style-type: none">• Temperature: -5–40 °C for storage, 10–35 °C when operating• Humidity: 5–90 % for storage, 20–80 % when operating
AC/DC rating	<ul style="list-style-type: none">• Input: 100–240 VAC, 50–60 Hz• Output: 15 VDC, 2 A / 9 VDC, 3 A / 5 VDC, 3 A
PC rating	<ul style="list-style-type: none">• 15 VDC, 2 A / 9 VDC, 3 A / 5 VDC, 3 A (30 W)

Note:

- Optional components may not be provided or different components may be provided depending on the model.
- The system specifications are subject to change without notice.
- Due to this computer's design, memory cannot be replaced or upgraded. Also, additional storage space cannot be added.

Ergonomic tips

Maintaining the proper posture during computer use is very important to prevent physical injury. Improper or prolonged keyboard use may result in repetitive strain injury. Viewing the monitor screen for extended periods of time may result in eye strain. Therefore, please follow these guidelines carefully when setting up and using the computer.

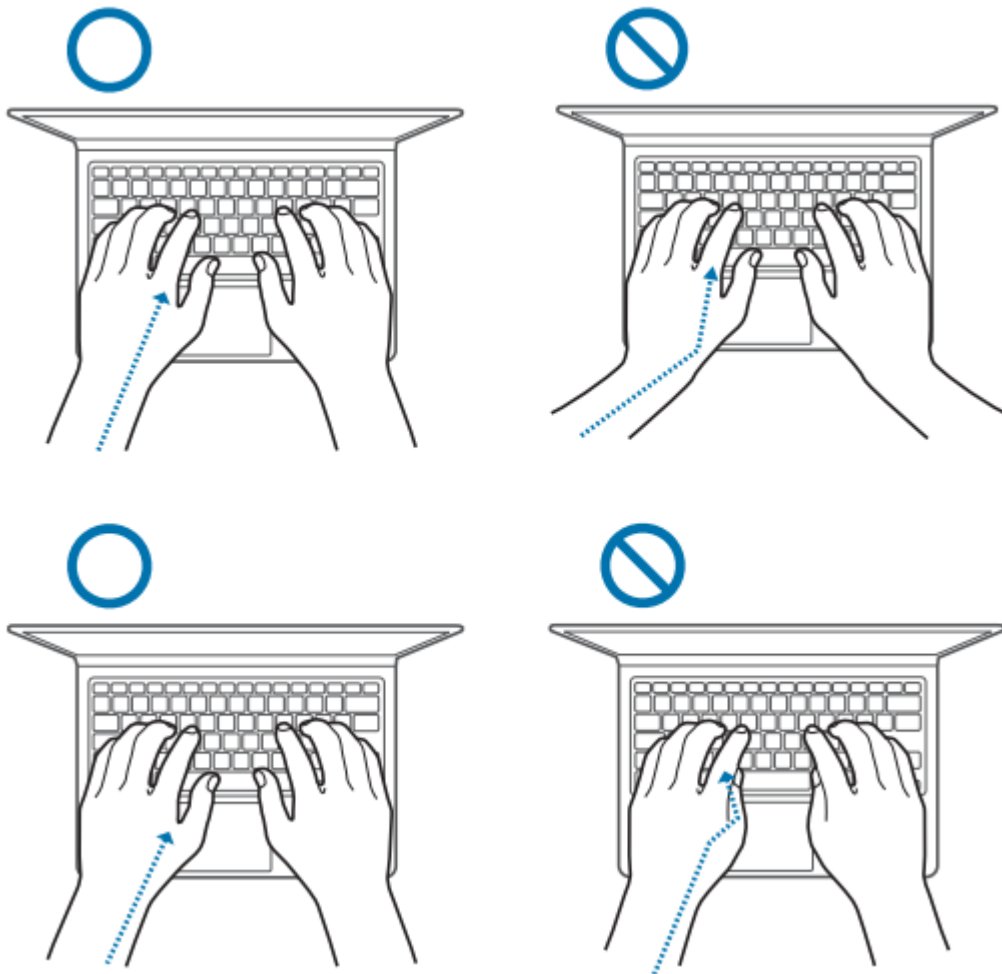
Back and neck



- Use an adjustable chair with firm, comfortable support.
- Adjust the height of your chair so that thighs are horizontal to the floor and feet are flat on the floor.
- The back of the chair should support the lower back. Adjust the backrest to fit your body properly.
- Sit back fully in your chair and straighten the back and neck. Avoid leaning forward or craning your neck toward the computer screen.
- Avoid using the computer while lying down or on your lap. If the computer's temperature increases, there is a danger of burn injury.

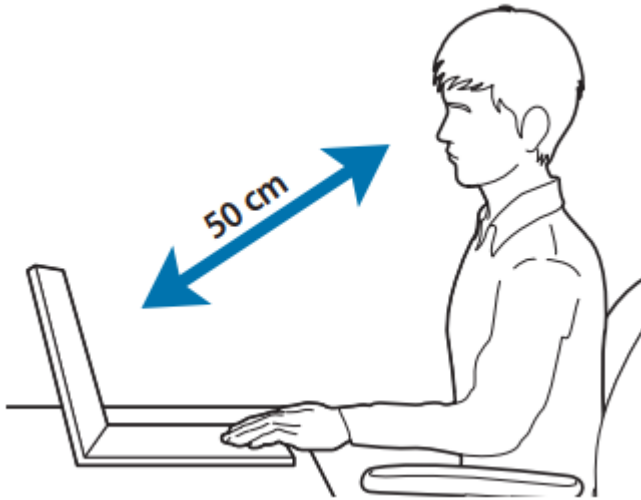
Note: The instructions in this manual have been prepared so that they can be applied to the range of needs of general users. If the user is not included in the range, the recommendations should be applied according to the user's needs. Images may differ from actual products.

Arms and hands



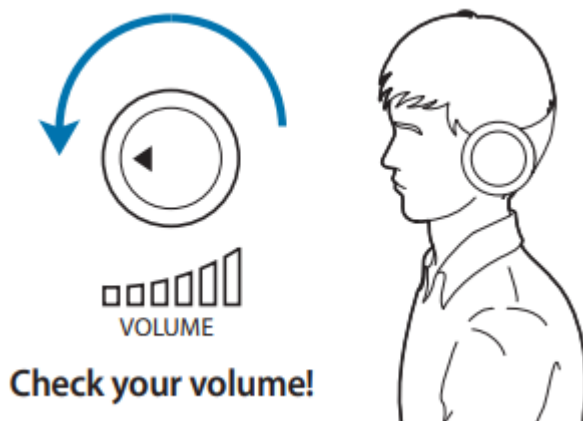
- When using the keyboard and touchpad, the shoulders should be relaxed. The upper arm and forearm should form an angle that is slightly greater than a right angle, with the wrist and hand in almost a straight line.
- Use a light touch when typing or using the touchpad and keep the hands and fingers relaxed. Avoid rolling the thumbs under your palms or supporting the wrists on the desk while typing.
- Use an external keyboard and mouse when using the computer for long periods. When using an external keyboard and mouse, position the devices at the same height as the computer and within comfortable reach.

Eye position and display illumination



- Position the screen at least 50 cm away from your eyes.
- Adjust the height of the screen so that its top edge is equal to or just below the level of your eyes.
- Avoid setting the screen's brightness settings excessively high.
- Keep the screen clean.
- If wearing glasses, clean them before using the computer.
- When referring to printed content while typing, use a static paper holder to hold the paper at about the same height as the monitor.

Hearing and volume control



- Ensure that the volume is not too loud before using the headset or earpiece. Excessive exposure to loud sounds can cause hearing damage.
- Always turn the volume down before plugging the earphones into an audio source and use only the minimum volume setting necessary to hear your conversation or music.
- Avoid using headphones for long periods of time.

- Default audio settings can be changed by software and driver updates without your knowledge. Always recheck equalizer and volume settings before listening to audio.
- To prevent possible hearing damage, do not listen at high volume levels for long periods.



Operating conditions

- Take at least a 10 minute break every hour.
- Avoid using the computer in dark locations. Use the computer with as much ambient light as you would when reading a book.
- Indirect illumination is recommended. Use a curtain to prevent reflections and glare on the screen.
- While operating a computer and talking on the phone, use a headset. Using the computer while holding a phone on your shoulder or with your neck may lead to muscle strain or injury.
- Keep frequently used items within reach.
- Only use the computer within the temperature and humidity ranges specified in this manual.

Use caution when exposed to flashing lights.

- While using your computer, leave some lights on in the room and do not hold the screen too close to your eyes.
- Seizures or blackouts can occur when you are exposed to flashing lights while watching videos or playing Flash-based games for extended periods. If you feel any discomfort, stop using the computer immediately.
- If anyone related to you has experienced seizures or blackouts while using a similar product, consult a physician before using the computer.
- If you feel discomfort, such as a muscle spasm, or disoriented, stop using the computer immediately and consult a physician.
- To prevent eye strain, take frequent breaks while using the computer.

Reduce the risk of repetitive motion injuries.

When you repetitively perform actions, such as pressing keys, drawing characters on a touch screen with your fingers, or playing games, you may experience occasional discomfort in your hands, neck, shoulders, or other parts of your body. When using your computer for extended periods, hold the computer with a relaxed grip, press the keys lightly, and take

frequent breaks. If you continue to have discomfort during or after such use, stop using the computer and consult a physician.

Warning

This content is compiled from multiple sources and is provided for reference purposes only. It may not be complete or fully applicable to all situations. If you are unable to resolve your issue, please contact the product manufacturer or an authorized service provider for official support.

Document generated by [ManualsFile](#)

