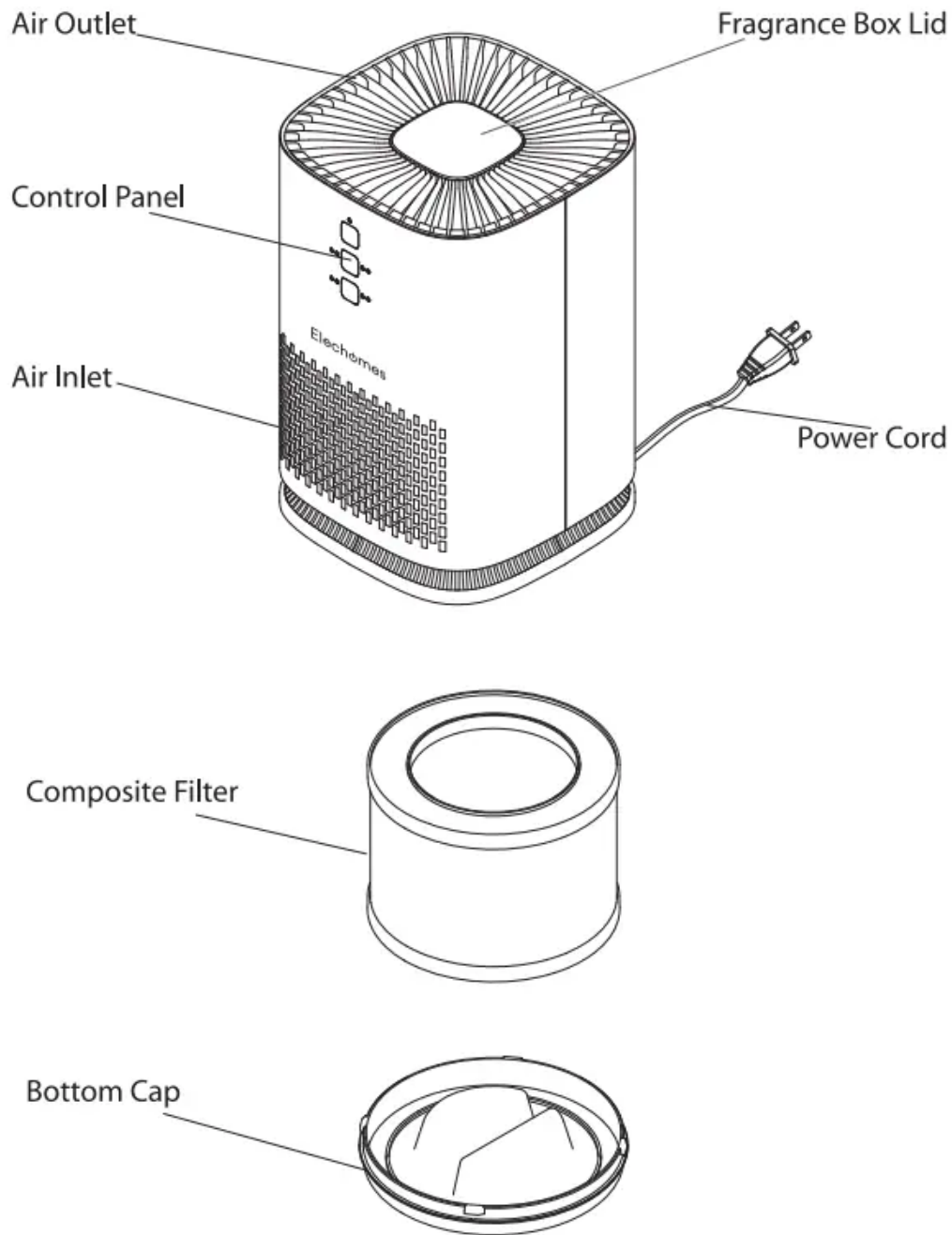


SAFETY PRECAUTIONS

Please follow the precautions below. Failure to do so may result in personal injury or damage to the product. Improper use will invalidate the warranty.

- Untangle the power cord before use.
- Do not let children operate the device unsupervised.
- Do not use the air purifier if the power cord is damaged. Contact a qualified service center for repairs.
- Do not yank the power cord or use it to pull the air purifier.
- Do not use the device in a damp or dusty environment.
- Do not place the device close to heat sources, furniture, curtains, aerosols, etc. This may cause a fire hazard.
- This product is for indoor, domestic use only.
- Do not cover the air inlet or outlet.
- Do not touch the device with wet hands.
- Do not let moisture into the interior of the device.
- Do not place anything on top of the device.
- Do not insert foreign objects into the device.
- Only place the device on a sturdy, level surface.
- Do not tilt the device.
- Unplug the device during cleaning and assembly.
- Unplug the device if it will not be used for a long period of time.

PARTS & ILLUSTRATION



Before installation

- Make sure the device is unplugged and all plastic wrap has been removed.
- Make sure the outlet is not blocked.
- Never use the device to dry clothes.

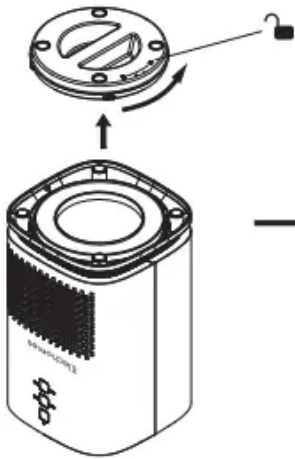


Figure 1

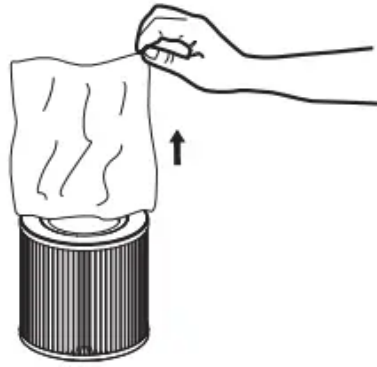


Figure 2

1.

Flip the device upside down and turn the cap to the



as **(Figure 1)**

2. Remove and unwrap the composite filter (Figure 2).

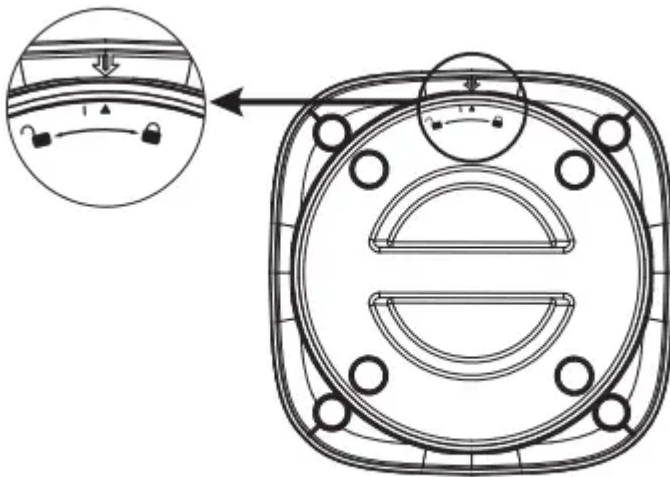


Figure 3

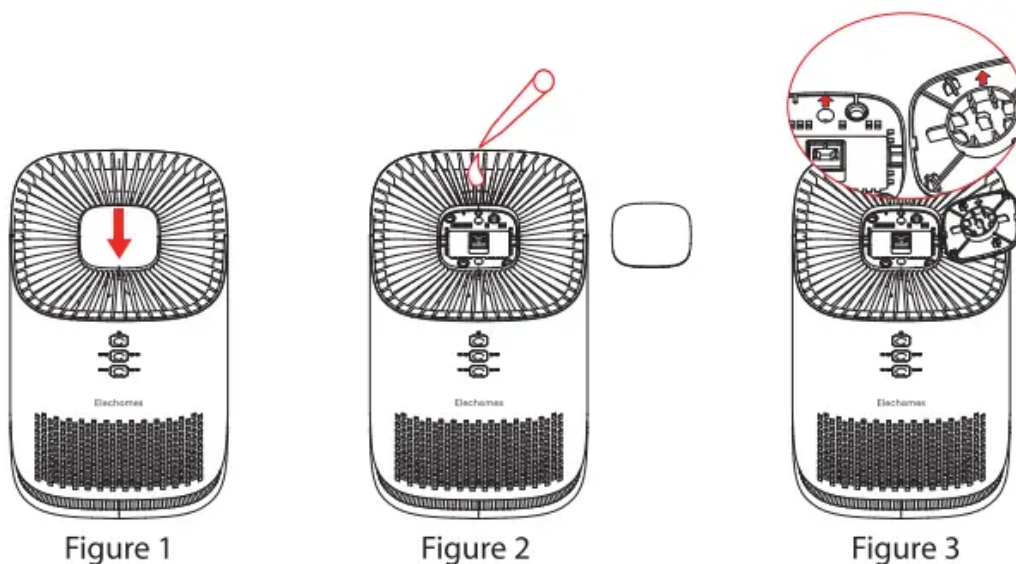
3. Place the composite filter into the unit. Twist the cap to the  position as **(Figure 3)**.

Note: Make sure the triangle mark on the bottom cap with the arrow mark on the unit.)

	<p>On/Off</p> <p>Press the on/off button to turn on the air purifier. This will set the wind speed to level 1.</p>
	<p>Wind Speed</p> <p>Press the wind speed button to choose your desired wind speed: level 1, level 2, level 3, or S (sleep).</p> <p>(Note: when sleep mode is activated, the indicator lights will turn off. To exit sleep mode, press any button.)</p>
	<p>Timer</p> <p>Press the timer button to set your desired working time (1, 2, 4, and 8 hours).</p>

OPERATION

How to Add Fragrance Oil



1. Press the lid of the fragrance box down to remove it (Figure 1).
2. Pour a few drops of essential oil on the cotton pad (Figure 2).
3. Place the lid back on the air purifier and press down (Figure 3).

Note: the arrow mark inside the lid should be aligned with the arrow mark of the unit.)

Filter Replacement Warning

After 3000 hours of use, the ON/OFF indicator will flash every 3 seconds to remind you to replace the filter. After the filter is replaced, turn on the purifier and press and hold the ON/OFF button for three seconds to reset the usage time.

MAINTENANCE

Composite Filter

- Clean the composite filter twice a week and replace it at least every 6 months.
- Do not wash the composite filter with soap.
- Clean the filter a vacuum or a small, soft brush. Be sure to keep the nozzle of the vacuum cleaner 5-10 cm from the filter.
- Brush the filter widthwise to prevent damage.
- The filter may absorb smells from cigarettes and cooking. If this occurs, clean the filter. If this persists, replace the filter.

Cleaning & Storage

- Turn off and unplug the device before cleaning.
- Wipe the device with a wet cloth. Do not use harsh solvents or soaps.
- Dry the unit thoroughly before use.
- Store the product in the original box and keep it in a dry, cool place.

TROUBLESHOOTING

Problem	Cause	Solution
The device doesn't work	The device is not plugged in	Plug the device into a wall outlet
The wind output is	The plastic wrap on the filter has not been removed	Remove the plastic wrap and reinstall the filter
	The inlets and outlets are weak blocked	Clear the blockage
	The filter is dirty	Clean or change the filter
The air quality has not improved	The filter has not been installed Install the filter.	Install the filter.
	Doors and windows are open	Close all doors and windows when using the device
	The inlets and outlets are blocked	Clear the blockage
	The filter is dirty	Clean or change the filter
The device emits a strange smell	People smoke or cook inside the room	Ventilate the room
	The filter is dirty	Clean or change the filter

SPECIFICATION

Elechomes Air Purifier	
Model	EPI 081
Rated Voltage	(US)AC 120V, (EU)AC 220-240V, (JP)AC 100V
Rated Frequency	(US)60Hz, (EU)50Hz, (JP)50-60Hz
Rated Power	(US)22W, (EU)25W, (JP)22W
Application Area	107-215 sq.ft / 10-20 m ²
CADR	80 m ³ /H
Noise	22~50dB
Size	6.3 x 6.3 x 9.3in / 160 x 160 x 235mm
Net Weight	57.1Oz / 1.62Kg
Composite Filter	K99-U08GE-01
Made in China	

Warning

This content is compiled from multiple sources and is provided for reference purposes only. It may not be complete or fully applicable to all situations. If you are unable to resolve your issue, please contact the product manufacturer or an authorized service provider for official support.