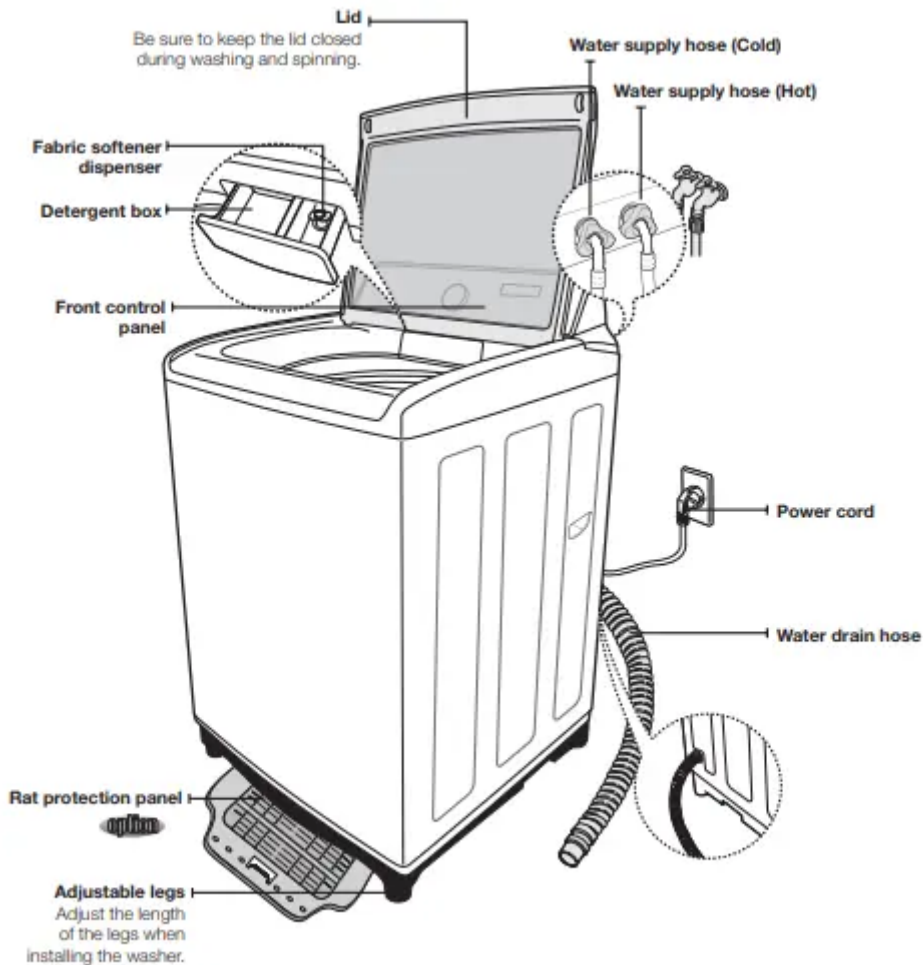


setting up your washer

DESCRIPTION OF PART

The User's Manual is for common use. Make use of the User's Manual depending upon your washing machine model.



CHECKING BEFORE WASHING AND CARING FOR GARMENTS

Must follow the checkpoints in order to avoid machine problems or damages on garments.

- If the below problems are caused by customer's faults, separate service fee will be charged.

Checkpoints Before Starting Washing

Check if the clothes are bleaching or not.

- Add liquid detergent to a white towel and the garment where you can't notice well. Then, rub together strongly. Check if the color transferred to the towel.
- Be careful for scarves and imported clothes since they are easily discoloring
- Check for stains or partial dirt.
- If stains are found, use the towel wet with detergents to rub on in a single direction.
- Before washing, the sleeves, collar, dress hem and pockets are pre-treated by brushing with detergents.

The wrinkle-processed clothes made of wool are specially treated by fixing them with threads before washing. The threads shall be removed after the clothes are dried.

Not washable laundry

Clothes those are easily transformable even by soaking in water

- Even by soaking in water, neckties, brassieres, jackets, suits and coats can be easily transformed like shrinking and discoloring on the garment surfaces because they are mostly made of rayon, polynosic, cuff and their blend fabrics.
- The wrinkle-processed, embossed, or resin processed products are easy to transform even by soaking in water.
- Easily discoloring products made of cotton and wool, wrinkled silk, leather products, leather accessory, leather ornamented clothes and its accessory.
- Don't wash those clothes without handling guideline or material indication tag.

About Detergent

- When detergents are not dissolving well, use warm water (about 40 °C) to dissolve the detergent.
- Use an appropriate amount.
- Even if excess amount of detergent is used, there is not much difference in washing result. It may cause damages to the garments because rinsing is not enough.
- The bleaching agent may cause damages to garments since it is strong alkali.

- Do sufficient rinsing because the powder detergent is easily remained on the garments causing bad odors.
- If too much detergent is used or cold water is used, it doesn't dissolve completely and remain on the garments, hose or spin basket, causing contamination on clothes.
- In case of reserved washing, detergents must be put in the detergent box. If the powder detergents are spread on laundry directly, it may cause discoloration.

CARING FOR CLOTHES BEFORE WASHING

Take out personal belongings from pockets.

- Caution, Check the pockets! Hairpins and coins cause damages to clothes and washing machine. They make noise and problems to the machine. Must check the pocket.



If pants zippers are open while washing, the spin basket may be damaged. The zipper should be closed and fixed with a string before washing.

- Metal on the clothing may cause damage to the clothes and the tub.
- Turn clothing with buttons and embroidered clothes inside out before washing them.
- Clothing with long strings may become entangled with other clothes, and may cause damage to the clothing. Be sure to fix the strings before washing.



Waterproof clothes (Ski Wear, Diaper Covers, Footboards) are not allowed for washing

- This may cause the laundry to be ejected or cause the washing machine to vibrate abnormally, which may result in personal injury or damage the washing

machine, the floor or the clothing. (Diapers, waterproof clothing, raincoats, umbrella covers, skiwear, car cover sheets, and sleeping bags, etc.).

- When the tub rotates, water may become trapped in the waterproof clothing or fabric and can collect in a corner, causing abnormal vibrations. In addition, the laundry rises and may be ejected and cause personal injury.

Shake the dirt or soils from clothes

- Soil and sands may rub delicate garments to cause damages and the washing result may be unsatisfactory

Do pre-washing for white socks, sleeves, and collars before the main washing

- For stains and dirt on collars, sleeves, hems, and pockets, apply some detergent to them and apply it lightly with a brush before washing.
- Use powdered or liquid detergent. Do not use soap as the tub may become dirty from the dirt on it.

Turn inside out for those nappy clothes before washing

- If clothes have too much foreign matter, separate them for washing. Other clothes may pick up those dirty matters (dirt, thread).
- Wash black colored clothes and cotton towels separately. If they are washed together, towels may pick up dirty matters. Check before washing.



Cashmilon and those garments having big volume and lightweight (eg. Lase-decorated clothes, lingerie, nylon stocking, synthetic fabrics etc.) may rise and cause damages to the clothes and problems to the machine. Use the laundry net or wash them separately.

- Must put those long stringed clothes, lase-worked clothes, bed cover sheet, wool clothes into a laundry net before washing.
- Put delicate clothes in the laundry net.
- Use only those commercial laundry net for washing.



Curtains, floating garments or blue jeans shall be pressed not to float on the water.

- If they are floated on the water, press Start/Pause button to stop and press them to sock in the water. If the washing goes on with clothes floating on the water, it may cause damages to the clothes and the washing machine as well as unsatisfactory washing result.

HOW TO WASH AUTOMATICALLY DEPENDS ON THE LAUNDRY

Before starting washing, check the following;

- Connect the water supply hose to the water tap. Leave a tap open. Plug the power cord in. Make sure to lay down the drain hose.

Washing for the first time

Before washing clothes for the first time, you must run a complete cycle without clothes. To do this:

1. Press the **Power** button.
2. Open the detergent drawer and insert a little detergent.
3. Turn on the water supply to the washing machine.
4. Press the **Start/Pause** button. This will remove any water from the manufacturer's test run remaining in the machine.

Special notes!

Automatic Sensing Function

- According to the selected program, the amount of laundry is automatically sensed and then the appropriate water level, wash time, rinse cycle, and spinning time are automatically selected for the automatic wash.
- After the power is on, a program is selected and **Start/Pause** button is pressed. Then, the washing board starts spinning without water. This action senses how much laundry is in the washing basket, not a machine problem. After this sensing process, water supplies automatically.

Adding Detergent and Softener

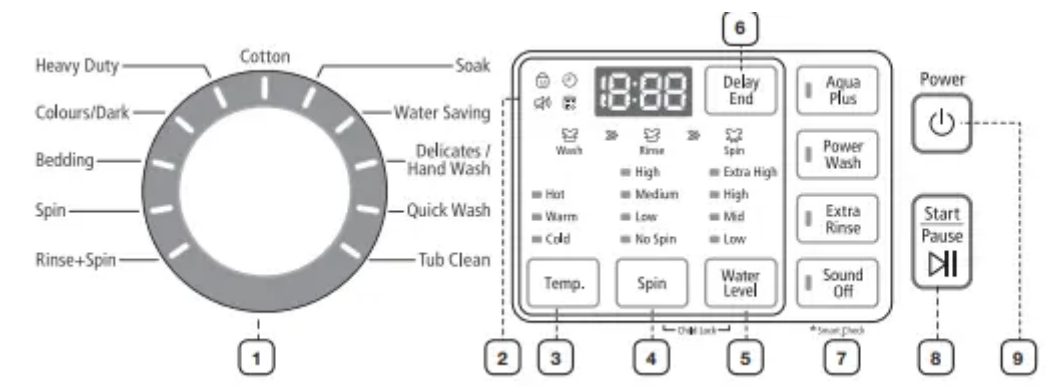
- It senses the amount of laundry and indicates the water level. Then, it starts water supply right away.
- During the water supply, it is possible to open the detergent box and add detergent. However, it is better to press Start/Pause button to stop water supply and add detergent. Close the lid and press Start/Pause button again. This way is much more convenient.
- If the softener is inserted in the softener dispenser, it automatically adds in at the last rinsing cycle.

Put the laundry into the washer and add detergent, too.

- Be careful not to overload. Use right detergent for the fabrics you are washing.
- If the lid is open while running, the washing machine is stopped automatically for safety. (Except, water supply continues while the lid is open.)
- When hot water is selected, both cold and hot water are supplied for the first 20 seconds in order to protect the clothes.
- Possible to control the washing time, rinsing cycle, and spinning time at every program during the washing.

CONTROL PANEL

For more details, see control panel of your washing machine.



<p>1 Cycle Selector</p>	<p>Select the appropriate cycle for the type of load. The cycle you select determines the tumble pattern and spin speed for the cycle.</p> <p>Cotton - For most fabrics including cottons, linens, and normally soiled garments.</p> <p>Soak - Soak time is set up as minutes. Can not change the soak time.</p> <p>Water Saving - This program reduces water consumption. Water Saving, Warm, High Spin and Extra High Water Level program is suitable for a normally soiled cotton load. Energy and water labelling test programme in accordance with AS/NZS 2040.</p> <p>Delicates/Hand Wash - For sheer fabrics, bras, lingerie, silks, and other handwash-only fabrics. For best results, use liquid detergent.</p> <p>Quick Wash - If you want to wash those frequently used towels or less dirty laundry time. Because washing is speedy, it is good for light or less stained laundry.</p> <p>Tub Clean - Use this program to clean the tub, it will keep the tub clean and sanitary. The TUB CHECK LED is turned on to notify the user that it is time to clean the tub. The powerful spinning force of the washing tub pulsator removes the contaminations from the exterior of the washing tub to prevent odors or secondary contamination.</p> <p>Heavy Duty - For sturdy, colorfast fabrics and heavily soiled garments.</p> <p>Colours/Dark - For brightly or dark colored casual garments.</p> <p>Bedding - For bulky items such as blankets and sheets. When you are washing comforters, use liquid detergent.</p> <p>Spin - Drains the water and spins at a high speed.</p> <p>Rinse + Spin - Use for loads that need rinsing only or to add rinse-added fabric softener to a load.</p>
<p>2 Display</p>	<p>Provides instructions and diagnostics while keeping you updated on the cycle status and time remaining.</p>

3 Temp. selection button	Press the button repeatedly to cycle through the different water temperature options. Hot - Whites and heavily soiled, colorfast items. Warm - Colorfast items. Cold - Brightly colored, very lightly soiled items.
4 Spin selection button	Press the button repeatedly to cycle through the different spin speed options. High - Use for underwear, t-shirts, jeans, and sturdy cottons. Medium - Use for jeans, wrinkle-free or wash-and-wear items, and synthetics. Low - Use for delicate items needing a slow spin speed. No Spin - Drains your washer without spinning. Use for extremely delicate items that cannot tolerate any spin.
5 Water Level	The water level is automatically adjusted. However, you can select the water level manually by pressing this button.
6 Delay End button	Press this button to finish the wash at a specified time. Turn off your washing machine to cancel a reserved delay start. You can set the delay end time from between 1 to 19 hours.
7 Select Cycle Option	Press these buttons to select different cycle options. Aqua Plus - Use this option to add more water during wash and rinse cycles. This option is not available when you set the water level to High. Power Wash - You can change the strength of water flow when washing by Inverter motor. Extra Rinse - Add an additional rinse at the end of the cycle to more thoroughly remove laundry additives and perfumes. Sound Off - If you select the Sound function, all button and washing completed sounds are muted. (However, even if the Sound Off function is selected, and an error occurs, the error sound will be heard.) Smart Check - If the washing machine does not operate properly, use this function to check if the washing machine is out of order on your smart phone. To enable this function, press and hold the Sound key for 3 seconds. Do not press any other key.
8 Start/Pause selection button	Press to pause and restart cycles.
9 Power button	Press once to turn your washer on. Press again to turn your washer off. If the washer is left on for more than 10 minutes without any buttons being touched, the power automatically turns off.

CHILD LOCK

This function is for protecting children, the elderly and the frail.

1. Press the Power button.
2. To activate the Child Lock function, press and hold both the **Spin** and **Water Level** buttons down simultaneously for 3 seconds. (If the Child Lock function is activated, the Child Lock icon blinks.)
3. Operations after activating the Child Lock function
 - Even if the Child Lock function is activated, every button works until the door opens.
 - When you open the door during the Child Lock is being activated, the alarm sounds and an error message appears. In 30 seconds, draining begins automatically. However, if you close the door within 30 seconds, water will not be drained. (Displayed error message “CL”, “dE”).
 - To add laundry after activating the Child Lock function, you must deactivate the Child Lock function.

4. To deactivate the Child Lock function, press and hold both the **Spin** and **Water Level** buttons simultaneously for 3 seconds again. (If the Child Lock function is deactivated, the Child Lock icon is turned off.)

5. To clear “CL” display, after draining is complete, close the door of the washing turn the power off and then on

- This function is for preventing injury and malfunction of the product because of inappropriate operations or actions by children, the elderly or the frail.
- If the door opens when the Child Lock function is activated, the water is drained by force to prevent children from drowning.
- To add laundry after activating the Child Lock function, you must deactivate the Child Lock.
- Even if the power is turned off and then on when the Child Lock is activated, the Child Lock remains activated.
- Once Child Lock is activated, even when the power is turned off, if the door is opened, water is automatically drained in 30 seconds.
- The Child Lock function cannot be deactivated when CL is displayed. (However, the Child Lock function can be deactivated when the dE error is displayed.)

SMART CHECK

This function enables you to check the status of the washing machine using a smartphone. The Smart Check function has been optimized for:

Galaxy S and Galaxy S2

iPhone 4 and iPhone 4S

Downloading the Samsung Smart Washer app

Download the Samsung Smart Washer app to your mobile phone from the Android market or Apple App store and install it. You can easily find it by searching for “**Samsung Smart Washer**”.

Using the Smart Check function

1. Hold down the Sound Off buttons at the same time for 3 seconds when an error occurs to run the Smart Check function. Alternatively, the Smart Check function can be run if no button is pressed after the washing machine is turned on.

2. The LED segments on the display panel rotate for 2 or 3 seconds and the Smart Check code is displayed on the washing machine's display panel.
3. Run the Samsung Smart Washer app on your smart phone and tap the Smart Check button. 'Smart Check' may be changed to 'Smart Check' according to the language selection.
4. Focus your smart phone's camera on the Smart Check code displayed on the washing machine's display panel.
 - If light from a light bulb, fluorescent bulb or lamp is reflected on the display panel of the washing machine, the smart phone may not be able to easily recognize the Smart Check code.
 - If you hold the smart phone at a too wide angle relative to the front of the display panel, it may not be able to recognize the error code. For best results, hold the smart phone so that the front of the display panel and the smart phone are parallel or nearly parallel.
5. If it focuses correctly, the Smart Check code is automatically recognized, and the detailed information of the status of your washing machine, the error and the countermeasures are displayed on your smart phone.
6. If the smart phone fails to recognize the Smart Check code more than twice, please enter the Smart Check code displayed on your washing machine's display panel into the Samsung Smart Washer app manually.

installation & maintenance

The User's Manual is for common use. Make use of the User's Manual depending upon your washing machine model.

ENVIRONMENT

Leave some space

Maintain at least 10 cm between the washer and the wall.

Place the washer on a sturdy flat surface.

If the washer is placed on an uneven or weak surface, noise or vibration occurs. (Allowable is 1°)

Adjust the legs for even placement.

Never install the washer near water.

Do not place the washer in steamy rooms or where the washer is directly exposed to rain. Moisture may destroy the electrical insulation causing an electrical shock hazard.

Avoid direct sunlight or heaters.

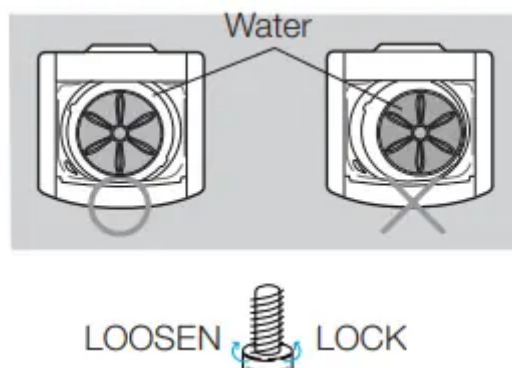
As plastic and electrical components are affected by direct heat, never place the washer near furnaces, boilers, etc. Do not place under direct sunlight.

LEVELLING

- If the washer is not leveled with the ground, it makes the machine tremble more or be out of order. So, make sure that the washer is leveled properly.

SEE IF THE MACHINE IS PLACED LEVEL BY CHECKING THE POSITION OF THE WASHING TUB.

- Open the lid of the machine, pour water into the tub up to the level just below the pulsator, and adjust the legs so that the pulsator is positioned at the center of the water as shown in the figure.
- Place the machine more than 10 cm away from the wall.
- Adjust the legs on feet for levelling.

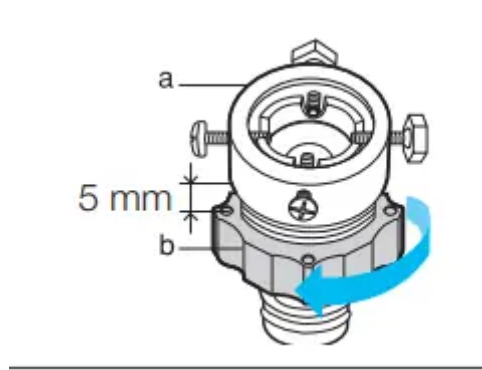


CONNECTING THE WATER SUPPLY HOSE

1. Remove the adaptor from the water supply hose.



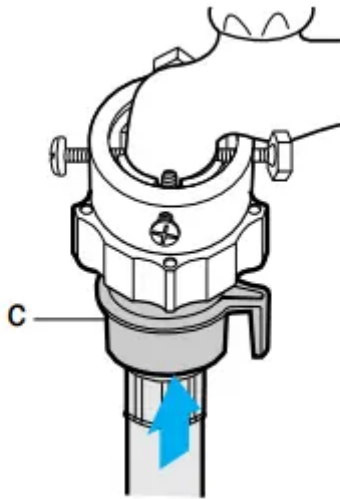
2. First, using a “+” type screw driver, loosen the four screws on the adaptor. Next, take the adaptor and turn part (b) following the arrow for gap about 5 mm between them.



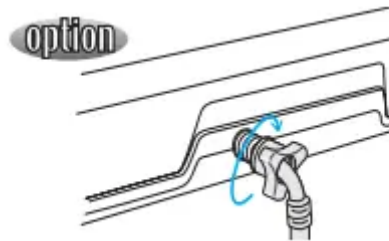
3. Connect adaptor to the water tap by tightening the screws firmly. Then, turn part (b) following the arrow and put (a) and (b) together.



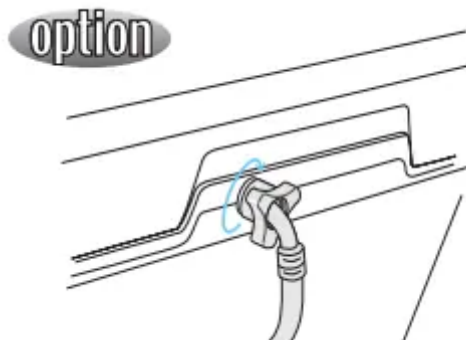
4. Connect the water supply hose to the adaptor. Pull down the part (c) of the water supply hose. When the part (c) is released, the hose is automatically connected to the adaptor making a ‘click’ sound.



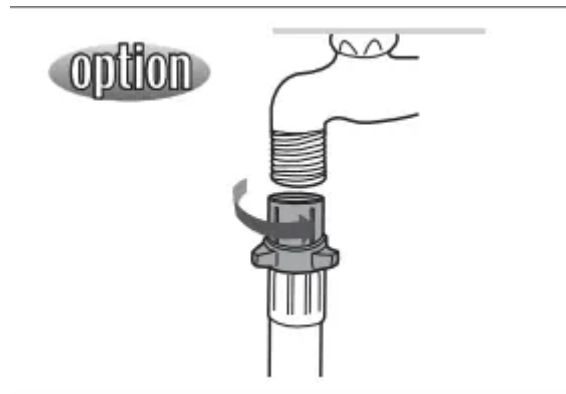
5. Connect the other end of the water supply hose to the inlet water valve at the back of the washer. Screw the hose clockwise all the way in.



5-1. Connect the other end of the water supply hose to the inlet water valve at the back side of the washer. Screw the hose clockwise all the way in.



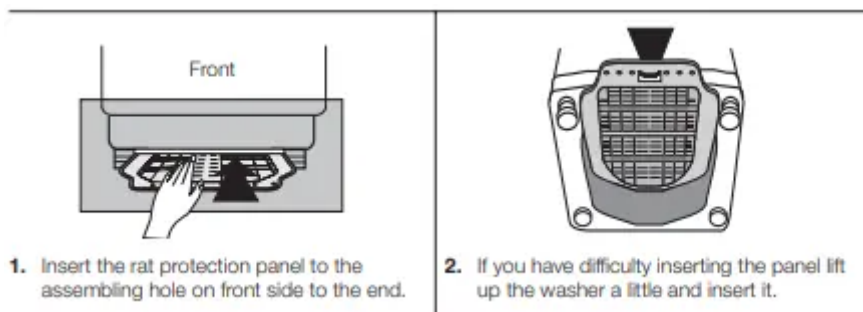
- If the water tap is a screw type, assemble a water supply hose that fits to the tap as shown. After completing connection, if water leaks from the hose, then repeat the same steps.



After completing connection, if water leaks from the hose, then repeat the same steps. Use the most conventional type of faucet for water supply. In case the faucet is square or too big, remove the spacing ring before inserting the faucet into the adaptor.

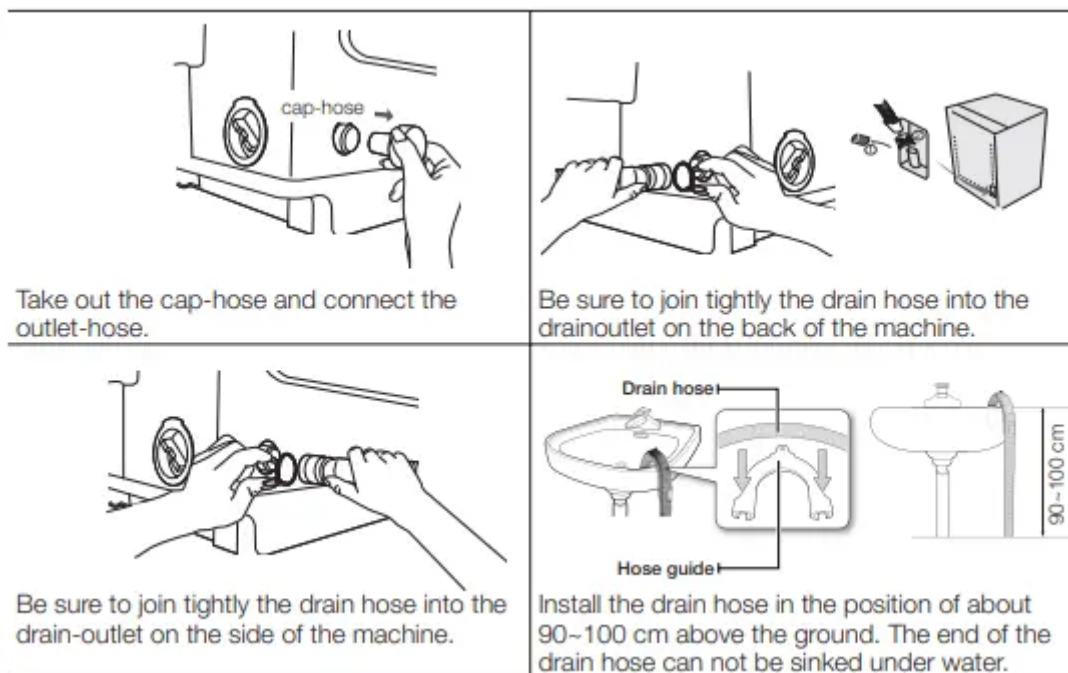
ASSEMBLING THE RAT PROTECTION PANEL (OPTION)

Tilt the washer a little and lift up the panel until it clicks as shown in the figure



HOW TO CONNECT THE DRAIN HOSE (OPTION)

IN CASE OF PUMP-DRAINED WASHER



Test run : Make sure that you install your washing machine correctly by running the Rinse+Spin cycle after the installation is complete.

CALIBRATION MODE

Your Samsung washing machine detects the laundry weight automatically. For more accurate weight detection, please run Calibration Mode after the installation. To run Calibration Mode, follow these steps:

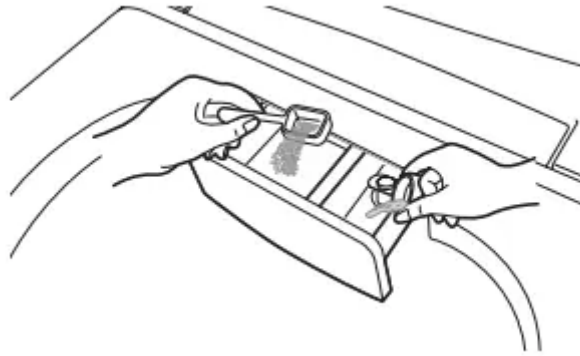
1. Remove laundry or any contents in the machine.
2. Press the **Delay End** and **Spin** buttons simultaneously, and then press the **Power** button. The Machine turns on with “Cb”
3. Press the **Start/Pause** button to activate “**Calibration Mode**”.
4. The drum rotates for approximately 4 minutes.
5. When “**Calibration Mode**” is finished, “**End**” appears on the display, and the machine automatically turns off. The washing machine is now ready for use.

ADDING DETERGENT

1. Open the detergent drawer and then add the powder detergent into the detergent compartment.
2. Add detergent evenly so that it doesn't brim over the edge of the drawer
 - Use a reasonable amount of detergent. If you use more detergent than the standard quantity or the water temperature is too low and

the detergent does not dissolve in the water completely causing it to remain on the laundry and in the hose and tub, it may cause damage such as dirtying and discoloring the laundry.

- if you use a powder detergent and it remains on the laundry, it may cause a bad odor. Rinse the laundry sufficiently in fresh water.

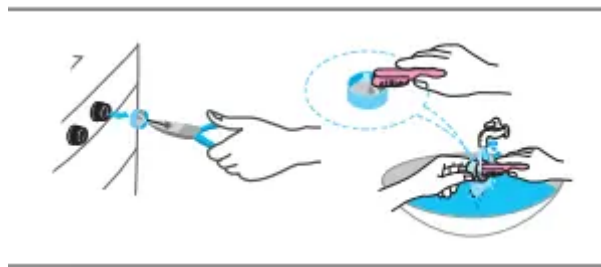


ADDING FABRIC SOFTENER

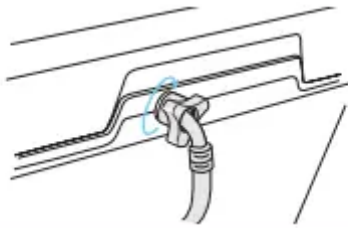
1. When the proper amount (one time dose) of fabric softener is stored in the softener inlet, it is automatically added during the last rinse cycle.
2. Do not add detergent, bleach or starch into the softener inlet.
3. Using too much softener may produce unsatisfactory results.
4. Do not open the lid during the Spin cycle. If added too early, its effectiveness will decrease.
5. Do not leave the softener in the softener dispenser for a long time as it may congeal.

WATER SUPPLY CONNECTOR FILTER

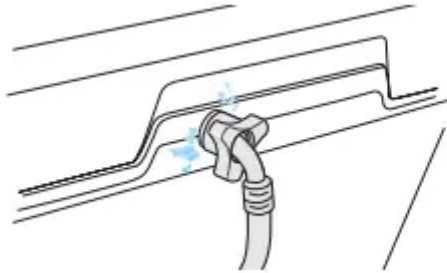
1. Pull out the filter and wash well.



2. Pull in the filter and connect the hose to the inlet water valve tightly.







3. Check if there is a leakage. Note to tighten up the connector



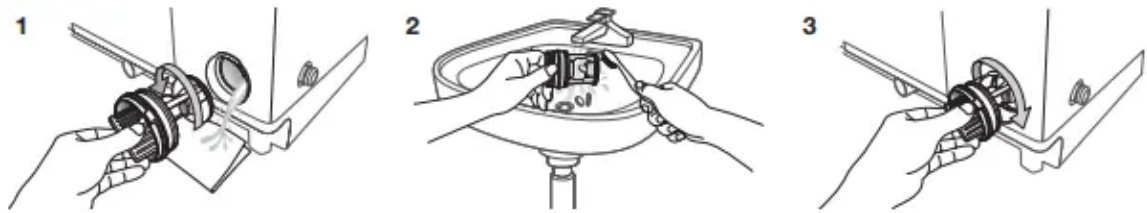
CLEANING THE FILTER

Clean the filter net often to keep the washer clean.

 <p>1. Push the upper part of the Hygiene filter and pull in.</p>	 <p>2. Open the cover as shown in the figure.</p>
 <p>3. Clean the Hygiene filter.</p>	 <p>4. Close the cover and insert the lower part of the filter in the basket first and then push the filter with "click" sound.</p>

CLEANING THE PUMP FILTER (OPTION)

1. Place a rag or towel under the wash filter to avoid wetting the floor, and rotate the filter counterclockwise and pull it out.
2. Remove any dirt from the filter.
3. Return the filter to its place by rotating the filter clockwise until it locks into position.



CLEANING THE DETERGENT COMPARTMENT

1. Separate the detergent compartment from the washer.
2. Separate and clean the Rinse-Cap from the detergent compartment.
3. Assemble the Rinse-Cap and insert the detergent compartment into the washer.

troubleshooting

Washing machine won't work

- Is the water tap opened?
- Is the washer plugged in?
- Is the power cut off?
- Is there enough water?

Water dose not drain

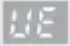
5E

- Is the drain hose down? (No pump)
- Is the drain hose frozen?
- Is the drain hose clogged?
- If the water dose not drain in 30 minutes, a buzzer will sound, and the remaining time indicator will show "5E".

Water is not supplied

4E

- Is the water tap opened?
- Is the water cut off?
- Is the water supply hose or hose connection clogged?
- Is the water tap frozen?
- If the water supply is not finished in 1 hour or there is no change in the water level 5 minutes (10minutes for some models) after the water supply has started, the buzzer rings and "4E" is displayed on the remaining time indicator.

Spinning does not work 


- Is the laundry spread out evenly in the washer?
- In the washer set on a sturdy flat surface?

Water is overflowed 

- Restart after spinning.
- If the error sign still indicates, call agency

This indicates that a Child Lock error occurred 

- The error message blinks at a 1 second interval and the water is drained with an alarm sound. (Displayed message: “CL” or “dE”)
- This function is to prevent children from drowning when falling into the wash tub. When draining is complete and you turn the power off and then on, the washing machine will operate normally.
- To clear “CL” display, after draining is complete, close the door of the washing machine, turn the power off and then on.

Water leakage error 

- Check if the end of the drain hose is placed on the floor. (The hose should be hung over the pump - hose guide.)
- Check if the drain hose is clogged by any foreign substances.
- If the error remains, call the service center.

washing machine won't work?

The power is cut off.

- Is the electric voltage normal?
- Is the washer plugged in? Plug in the electric cord
 - Water does not drain.
- Is the drain hose down? Put the drain hose down.
- Is the drain hose folded? Unfold the drain hose.
- Is the drain hose outlet clogged? Remove the waste cleanly.

Washing machine won't work.

- Is the washer lid open?
 - Close the lid.

- Is the Pause button on?
 - Press the Start/Pause button one more time and check if the washer starts.
- Is enough water filled to the water level?
 - If the water pressure is low, it takes a long time to start washing.
- Is the faucet closed?
 - Open the faucet to supply water.

If the drain hose and spin basket are frozen, do as follows.

- Add hot water to the frozen water tap and remove the drain hose. Soak into hot water.
- Pour hot water into the spin basket for about 10 minutes.
- Put a hot water towel on the drain hose connector.
- If the drain hose defrosts, connect again and check for proper water draining.

The water drains out immediately.

- The drain is clogged with coins or pins. The drain hose is hung over the drain hose hook. Half fill the spin basket with water and try for spinning again.

The water leaks at the water supply hose connector.

- If the faucet connecting part is loose, water may leak.
 - Repeat the assembling steps again. (Refer to “Connecting the water supply hose”)
- Check if the rubber packing of water supply hose is in the right position.
 - Screw tightly again.
- Is the water supply hose folded?
 - Unfold the hose.
- If the water supply is too strong, water may leak.
 - Close the faucet a little.
- Is water leaking from the faucet itself?
 - Fix the faucet. Water is not supplied.

The water leaks at the water supply hose connector.

- Did you press the Start/Pause button after selecting the water supply?
 - If the Start/Pause button is not pressed, water is not supplied. Press the Start/Pause button.

- Is the faucet closed?
 - Turn on the faucet
- Is the filter net at the water supply hose connector clogged with dirty matters?
 - Clean the filter net by brushing with a toothbrush.
- Is the water supply cut off?
 - If the water supply is suspended, turn off the faucet and power off.

Spinning makes loud noises and vibrations.

- Check if the laundry is spread evenly in the washer.
 - Spread out the laundry evenly and start again.
- Check if the washing machine levels on a sturdy fl at floor.
 - Set the machine at level
- Is the handle for leveling legs loose?
 - Adjust the legs on the feet for leveling
- Is around the washing machine fi lled with unnecessary stuffs?
 - Remove those unnecessary things away from the wash machine

specification

WA70F5G4,WA80F5G4

MAX. MASS OF DRY CLOTH IN kg	WA70F5G4	7.0kg	STANDARD WATER LEVEL	Extra high	87 ℓ
	WA80F5G4	8.0kg		High	65 ℓ
POWER CONSUMPTION	WASH	300- 350W		Medium	44 ℓ
	SPIN	250W		Low	34 ℓ
DIMENSIONS(mm)		610*672*1100 (High) 610*672*1080 (Low)	WASHING TYPE	Stirring Type	
WEIGHT		44 kg	WATER USAGE	146 ℓ	
WATER PRESSURE		0.05-0.78 Mpa (0.5 - 8.0 kg-f/cm2)	SPIN SPEED	720 rpm	

Warning

This content is compiled from multiple sources and is provided for reference purposes only. It may not be complete or fully applicable to all situations. If you are unable to resolve your issue, please contact the product manufacturer or an authorized service provider for official support.