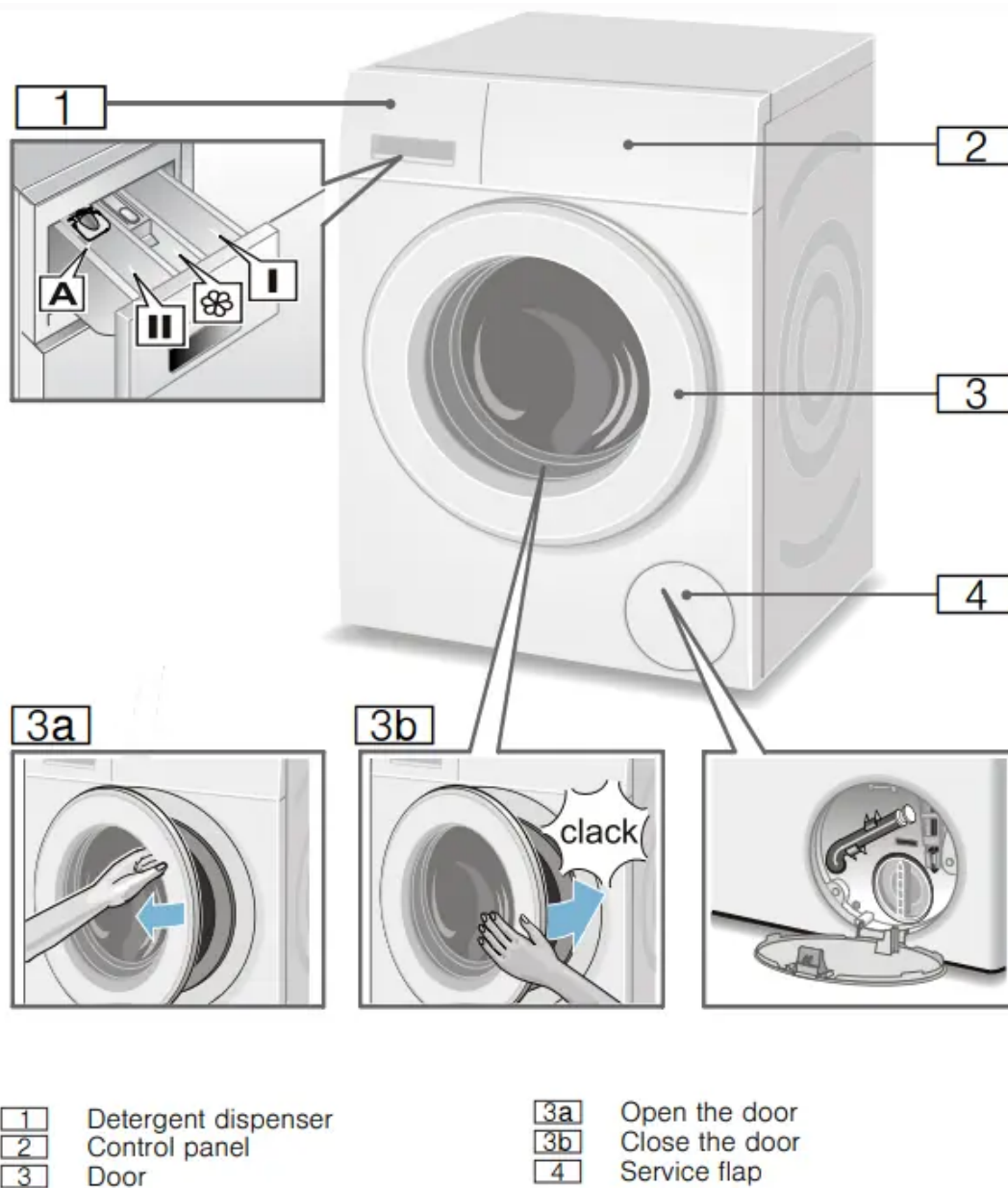
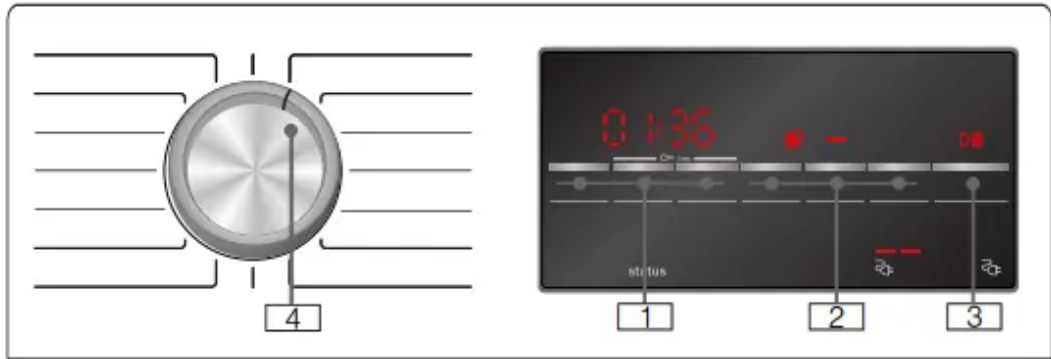
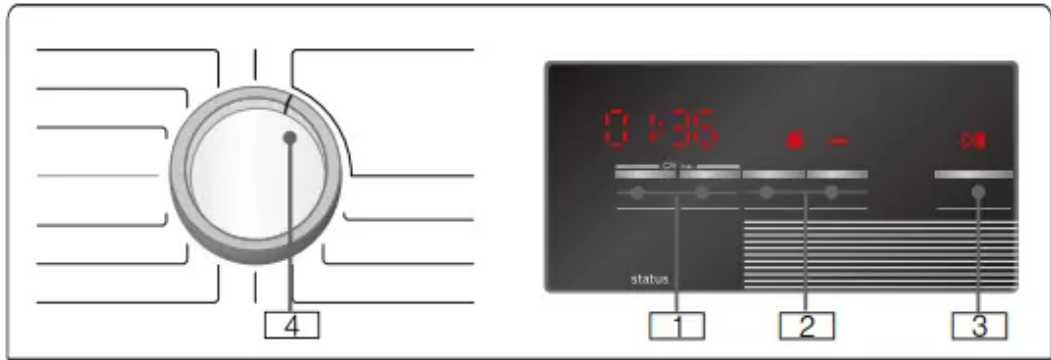


Getting to know the appliance



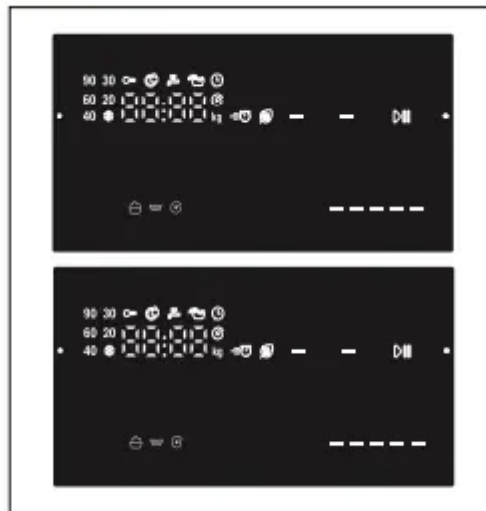
Control panel

You can find possible programme default settings and additional programme settings in the overview; these differ depending on the model.



Display panel

In the table you can find possible settings and information in the display panel; these differ depending on the model.

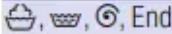




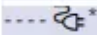


Settings for the selected programme

* - 90*	Temperature in °C	Temperature
----, 0 - 1400*	Spin speed in rpm (revolutions per minute)	Maximum spin speed or ---- (Rinse stop = without final spin, washing remains in the water after the last rinse)
1:30	Programme length	Depends on the programme selection in h:min (hours:minutes)
1 - 24	Finish in h (hours)	End of programme after ... Hours
9.0*	Load in kg	Maximum load

* Depending on the model

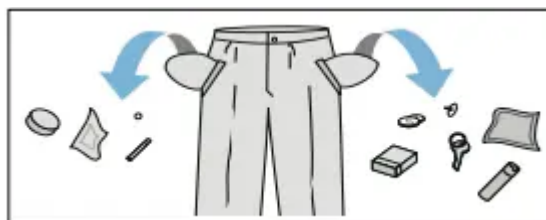
Status indicators for the programme progress (programme sequence)

	Wash, rinse, spin/drain, programme end.
 Childproof lock	Lights up: The childproof lock is active. Flashes: The childproof lock is activated, and if the programme selector has been adjusted or the buttons have been pressed.
 Door lock	Lights up: When the door can not be opened.
 Tap	Lights up: Water pressure is too low. This extends the programme duration. Flashes: The tap has not been turned on or there is no water supply.
 Overdosage	On if too much foam detected, one additional rinse cycle switched on.
 Power consumption.	

* Depending on the model

Laundry

Prepare the laundry



- Damage to the appliance/fabrics
- Foreign objects (e.g. coins, paper-clips, needles, nails) may damage the laundry or components in the washing machine.
- Therefore, note the following tips when preparing your laundry:

Empty pockets.

- Look out for metal items (paperclips, etc.) and remove them.
- Wash delicates in a laundry bag tights, underwired bras, etc.).
- Close any zips, button up any cover buttons.
- Brush sand out of pockets and collars.

- Remove curtain fittings or place curtains in a laundry bag.

Sorting laundry

- Sort your laundry according to the care instructions and manufacturer's information on the care labels:
- Type of fabric/fibre
- Colour

Note:

- Laundry can discolour or not be cleaned correctly. Wash white and coloured laundry separately.
- Wash new bright fabrics separately the first time you wash them.

Soiling

1. Wash laundry with the same level of soiling together.
2. You can find examples of levels of soiling on
3. Light: Do not pretreat, select the G SpeedPerfect setting if necessary – Normal
4. Heavy: Load less laundry, pretreat the laundry if necessary.
5. Stains: Remove/pretreat stains while they are fresh. First, dab the stain with soapy water/do not rub.
6. Then wash the items of laundry with the appropriate programme.
7. Stubborn/dried-in stains can sometimes only be removed with several washes.

Symbols on the care labels

1. The numbers in the symbols indicate the maximum washing temperature which may be used.
2. M: Suitable for a normal washing process; e.g. i Cottons programme.
3. U : A gentle washing process is required; e.g. = Easy Care//

Synthetics programme.

- An especially gentle washing process is required; e.g.
- Delicates/Silk//Delicate/Silk programme. – W : Suitable for washing by hand; e.g. WãWool programme.
- Do not wash the laundry in the machine.

Starching

Note: Laundry shall not be treated with fabric softener.

- Starching is possible in all wash programmes if liquid starch is used.

- Measure starch into compartment M in accordance with the manufacturer's instructions (clean first if necessary).

Dyeing/bleaching

1. Dye should only be used in normal household quantities. Salt may damage stainless steel. Always follow the dye manufacturer's instructions.
2. Do not use the washing machine to bleach clothes.


Detergent

Correct selection of detergent

- The care label is crucial to ensure correct detergent selection, temperature and laundry treatment.
- Standard detergent with optical brighteners suitable for heat-resistant white washing made from linen or cotton
- Programme: i Cottons/ cold – max. 90 °C
- Detergent for colours without bleach or optical brighteners suitable for coloured washing made from linen or cotton
- Programme: i Cottons/ cold – max. 60 °C

Detergent for colours/delicates without optical brighteners suitable for coloured laundry made from easy-care fibres, synthetic fibres

- Programme: = Easy Care//
- Synthetics/ cold – max. 60 °C
- Detergent for delicates suitable for delicate, fine fabrics, silk or viscose
- Programme: “ Delicates/Silk//
- Delicate/Silk/ cold – max. 40 °C
- Detergent for woollens suitable for woollen fabrics
- Programme: WãWool / cold – max. 40 °C
- Saving energy and detergent
- For light and normal soiling, you can save energy (lower washing temperature) and detergent.

Saving	Soiling/note
<p>Reduced temperature and detergent quantity as per the recommended dosage</p>  <p>Temperature as per the care label and detergent quantity as per the recommended dosage for heavy soiling</p>	<p>Light No visible dirt or stains. Clothing has taken on some body odour, e.g.:</p> <ul style="list-style-type: none"> ■ Light summer/sports clothing (worn for a few hours) ■ T-shirts, shirts, blouses (worn for up to one day) ■ Guest bed linen and hand towels (used for one day) <p>Normal Visible dirt or a few light stains, e.g.:</p> <ul style="list-style-type: none"> ■ T-shirts, shirts, blouses (sweat soaked, worn a few times) ■ Towels, bedding (used for up to one week) <p>Heavy Dirt and/or stains clearly visible, e.g. tea towels, baby items, work clothing</p>

Programme default settings

Temperature

- Temp. °C)
- Depending on what stage the program is in, you can change the set temperature before and during the program.
- The maximum temperature that can be set depends on the program that has been selected.
- Spin speed rpm//0 Spin Speed)
- Depending on what stage the program is in, you can change the spin speed in rpm; revolutions per minute) before and during the program.

Setting

- The rinsing water is drained but there is no final spin. The laundry stays wet inside the drum, e.g. for items that should not be spun.

- Setting - - - -: (Rinse Stop) = no final spin. The laundry stays in the water after the final rinse.
- You can select "Rinse Stop" to prevent creasing if the laundry will not be taken out of the washing machine immediately after the program has ended.
- To continue/end the program
- The maximum speed that can be set depends on the model and program that has been selected.

Finish in time

1. Ready in//ñ Finished in)
2. Before starting the program, you can preselect the program end ("Finish in" time) in hourly increments (h = hour) up to a maximum of 24 hours.

To do this:

- Select a program.
- The program duration is displayed for the selected program, e.g. 2:30h hours:minutes).
- Press the ñ Ready in//ñ Finished in button repeatedly until the required number of hours is displayed.
- Press the A button.
- The program starts.
- The selected number of hours (e.g. h) is shown in the display panel and counts down until the wash program starts. The duration of the program is then displayed.

Note:

- The length of the program is automatically adjusted when the program is running.

Certain factors can affect the program length, e.g.:

1. Program settings,
2. Detergent dosage (additional rinse cycles if required due to foaming),
3. Load size/type of textiles (water absorption differs),
4. Imbalances (e. g. due to fitted sheets) are offset with several startups of spin cycles,
5. Fluctuations in power supply,

Water pressure (infeeding speed).

- Following the start of the program, you can change the preselected number of hours as follows:
- Press the A button.
- Use the ñ Ready in//Finished in button to change the number of hours.
- Press the A button.

- Following the start of the program you can add or remove laundry as required
- SpeedPerfect/EcoPerfect
- Button with two possible settings for adapting the selected program:

SpeedPerfect

- Washing in a shorter time while achieving a washing result that is consistent with, but uses more energy than, the selected program, without the SpeedPerfect/EcoPerfect setting.

Note: Do not exceed the maximum load.

EcoPerfect

- Energy-optimised washing by reducing the temperature while achieving a washing result that is consistent with the selected program, without the SpeedPerfect/

EcoPerfect setting.

- Press the button to do this. First of all, you can select the G SpeedPerfect setting. If you press the button again, the F EcoPerfect setting is active. The respective symbol is shown in the display when the setting is activated.
- If you press the button again, no setting is active.

Rinse&Water Plus

- Rinse Plus//Z Extra Water
- Water Plus//Z Water plus)
- Increased water level and additional rinse cycle, extended washing time. For areas with very soft water or for further enhancing the spin result.

Soak

1. Before the main wash cycle starts, the washing remains for longer in the water to partially dissolve intensive soiling.
2. To be used for particularly stubborn soiling; put detergent in dispenser I before starting the appliance.

Notes

- Load laundry of the same colour.
- If your machine does not have this option, you can soak as follows:
- Select the i Cottons30 °C programme and the A button.
- Press the A button after approx. 10 minutes. The laundry remains in the soaking solution.
- Leave the laundry to soak for as long as required, then either press the A button again to continue the programme or change the programme.

Note:

- No additional detergent is required; the soaking solution is used for washing.
- Special spin sequence with subsequent fluffing. Gentle final spin – residual moisture in the laundry slightly increased.

Operating the appliance

- Preparing the washing machine
- Never switch on a damaged washing machine!
- Inform customer service!
- Connect the mains plug.
- Turn on the tap.

Open the door.

- Check that the drum is completely emptied. Empty if necessary.
- Select programme/switch on the appliance

Note:

- If you have activated the childproof lock, you must first deactivate it before you can set a program. .
- Use the program selector to select the required program. Can be rotated in either direction.

The appliance is switched on.

- The program default settings for the selected program appear in the display panel:

Temperature*,

- Spin speed*,
- The maximum load and the duration of the program (alternately),
- Energy consumption*.
- Depending on the model
- Change the programme default settings
- You can use the default settings or change them.
- To do this, repeatedly select the corresponding button until the required setting is displayed.
- The settings are activated without needing to be confirmed.
- They are not saved when the appliance is switched off.
- Programme default settings ~ Page 13

Overview of programmes ~:

- Supplementary sheet for the operating and installation instructions.
- Select additional programme settings
- By selecting additional settings, you can better adapt the washing process to your items of laundry.
- The settings can be selected or deselected depending on the programme progress.
- The indicator lamp for the button lights up if a setting is active.
- The settings are not saved when the appliance is switched off.

Additional settings

- Overview of programmes
- Supplementary sheet for the operating and installation instructions.
- Placing laundry into the drum

Warning

Danger of death!

- Items of laundry pretreated with cleaning agents that contain solvents, e.g. stain remover/cleaning solvent, may cause an explosion after being loaded into the washing machine.
- Hand-rinse items of laundry thoroughly beforehand.

Notes

- Mix items of laundry of varying sizes.
- Laundry items of different sizes distribute themselves better during the spin cycle. Individual items of laundry may lead to imbalances.
- Observe the specified maximum load. Overfilling has a negative impact on the washing result and promotes creasing.
- Place presorted items of laundry unfolded in the washing drum.
- Make sure that no items of laundry are trapped between the washing machine door and the rubber seal, and close the door.

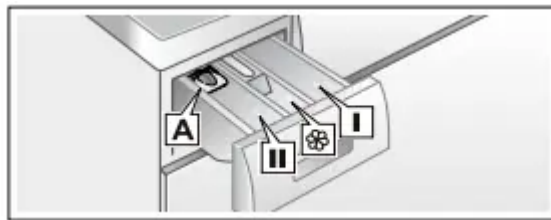


Eye/skin irritation!

- Detergent and care products may spray out if the detergent drawer is opened while the machine is in operation.
- Open the drawer carefully.
- Rinse eyes or skin thoroughly if they come into contact with detergent/care products.
- If swallowed accidentally, seek medical advice.

Note:

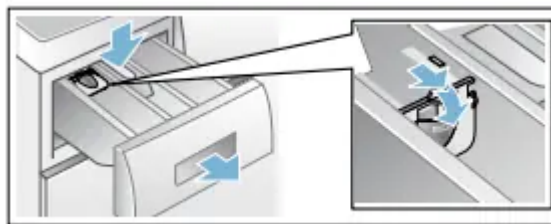
1. Dilute viscous fabric softener and fabric conditioner with water; this prevents blockages.
2. Pour the detergent and care products into the appropriate compartments:



Measuring aid* for liquid detergent

- Depending on the model
- Position the measuring aid for measuring the correct amount of liquid detergent:
- Pull out the detergent drawer. Press down the insert and fully remove the drawer.
- Slide the measuring aid forwards, fold it down and click it into place.

Reinsert the drawer.



Note: Do not use the measuring aid for gel detergents and washing powder, or for programmes with prewash or when

- Finish in" time is selected.
- For models without a measuring aid, pour the liquid detergent into the appropriate dispenser and place it in the drum.

Start the programme

- Press the A button. The indicator lamp lights up and the program starts.
- The display panel shows the Finish in time while the program is running or the program duration and the program progress symbols once the wash cycle has started.

Note: Foam detection

- If the Å symbol also lights up in the display panel, the washing machine has detected too much foam during the wash cycle and automatically activated additional rinse cycles to remove the foam.
- Add less detergent to the next wash cycle with the same load.
- If you want to lock the program to prevent it from being inadvertently adjusted, you can select the childproof lock as follows.

Childproof lock

- You can lock the washing machine to prevent the functions you have set from being changed inadvertently. To do this, activate the childproof lock when the program has started.
- To activate/deactivate, press and hold the 0 rpm//0 Spin Speed and ñ Ready in//Finished in buttons at the same time for approx. three seconds. The E symbol appears in the display panel.
- E lights up: The childproof lock is active.
- E flashes: The childproof lock is active and the program selector has been adjusted. To deactivate the childproof lock, reset the program selector to the initial program. The symbol lights up again.

Note:

- To avoid the program to terminate, do not turn the program selector beyond the Off position.

Note:

- The childproof lock remains active after the program has ended and the appliance is switched off. You must always deactivate the childproof lock if you want to start a new program.

Adding/removing laundry

1. Following the start of the program, you can add or remove laundry as required.
2. Press the A button to do this.
3. The A button indicator lamp flashes and the machine checks whether it is possible to add laundry.
4. If the following appears in the display panel: the è symbol disappears, and adding is possible. the è symbol lights up, it is not possible to add laundry.
5. To continue the program, press the button A. The program continues automatically.

Notes

- Do not leave the door open for too long when adding laundry as water from the laundry may leak out.
- For safety reasons, the door remains locked when the water level or temperature is high, or while the drum is turning, and it is not possible to add laundry during this time.
- The load display is not active during reloading.

Changing the programme

- Press the A button.
- Select another program.
- Press the A button. The new program starts from the beginning.
- Cancel the programme
- For programs at high temperature:

Press the A button.

- To cool down laundry: Select
- Rinse/Freshen up//Rinse. 3. Press the A button.
- For programs at low temperature:
- Press the A button.
- Select 0 Spin/Drain

Press the A button.

1. Programme end during rinse hold appears in the display panel and the indicator lamp of the A button flashes.
2. Continue the program by:
3. Pressing the A button or
4. Selecting a spin speed or setting the program selector to 0 Spin/Drain [and then pressing the A button.

Programme end

- End appears in the display panel and the indicator lamp of the A button is off.
- Removing laundry/switching off the appliance
- Open the washing machine door and remove the laundry.
- Turn the programme selector to Off.
- Appliance is switched off.

Turn off the tap.

- Not required for Aqua-Stop models.

- Contents of package

Notes

- Do not leave any items of laundry in the drum. They may shrink in the next wash or discolour another item.
- Remove any foreign objects from the drum and the rubber seal – risk of rusting.

Cleaning and maintenance

Machine housing/control panel

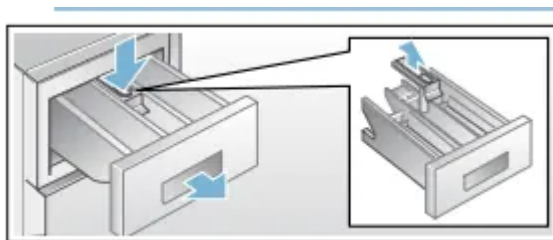
- Wipe the housing and the control panel with a soft, damp cloth.
- Remove the detergent residue immediately.
- Do not clean with a water jet.

Drum

- Use chlorine-free cleaning agents, do not use steel wool.
- If there are odours in the washing machine, or to clean the drum, run the
- Drum Clean 90 °C or i Cottons 90 °C program without laundry. Add washing powder.

Descaling

- Descaling should not be necessary if the detergent is measured out correctly.
- However, if it is required, follow the manufacturer's instructions for the descaling agent. Suitable descalers can be obtained via our website or from our after-sales service ~ Page 25
- Detergent drawer and housing
- If the washing machine contains detergent or fabric softener residues:
- Pull out the detergent drawer. Press down the insert and fully remove the drawer.
- To remove the insert: Push the insert upwards from below with your finger.

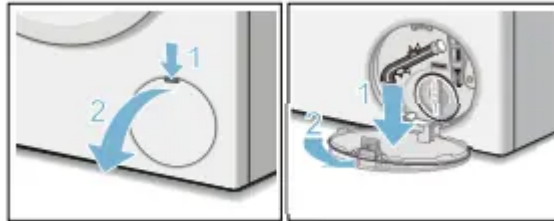


- Clean the detergent dispenser tray and insert with water and a brush, and dry it. Clean the inside of the housing as well.
- Fit the insert and lock it in place (push the cylinder onto the guide pin).
- Push in the detergent drawer.

Note: Leave the detergent drawer open so that any residual water can evaporate.

Allow the water to cool down.

- Turn off the water tap so that no more water can flow in and has to be drained via the drain pump.
- Switch off the appliance. Disconnect the mains plug.
- Open and remove the service flap

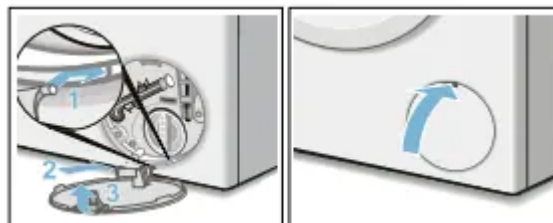


- Take the drain hose out of the retainer.
- Remove the sealing cap, allow the detergent solution to flow out into a suitable container.
- Replace the sealing cap and place the drainage hose in the retainer.
- Carefully unscrew the pump cover, residual water may leak out.

Clean the interior, pump cover thread and pump housing.

The impeller in the detergent solution pump must be able to rotate.

Refit the pump cover and screw it on tightly. The handle must be in a vertical position.



Note: To prevent unused detergent from flowing straight into the drain during the next wash, pour 1 litre of water into compartment II and start the 0 Spin/Drain [programme

The drain hose at the siphon is blocked

- Switch off the appliance. Disconnect the mains plug.
- Loosen the hose clamp. Carefully remove the drain hose, residual water may leak out.
- Clean the drainage hose and siphon connecting piece.

Filter in the water supply blocked

- First, reduce the water pressure in the supply hose:
- Turn off the tap.
- Select any program (except

- Rinse/Freshen up//Rinse//

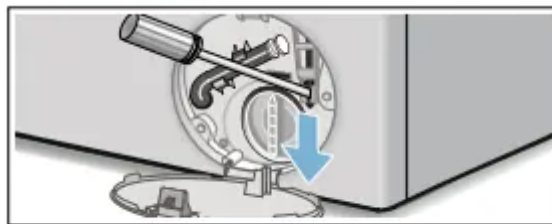
Spin/Drain

1. Press the A button. Allow the program to run for approximately 40 seconds.
2. Turn the program selector to off position. Pull out the mains plug.
3. Clean the filter on the tap:
4. Disconnect the hose from the tap.
5. Clean the filter with a small brush.
6. For standard and Aqua-Secure models, clean the filter on the rear of the appliance:
7. Remove the hose from the rear of the appliance.
8. Use pliers to remove the filter and then clean it.



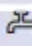
Faults and what to do about them.

Water damage

- Any escaping water may cause water damage.
- Do not open the washing machine door if water can be seen through the glass.
- Switch off the appliance. Disconnect the mains plug.
- Drain the detergent solution.
- Pull the emergency release downwards with a tool and release.
- The washing machine door can then be opened.



Information on the display panel

Display	Cause/Remedy
	<ul style="list-style-type: none"> ■ Flashes fast + signal: The door was opened and the water level is too high. Close the door, continue the programme with ▷ button or select  Spin/Drain programme. ■ Flashes slowly: The door lock temperature is too high to open the door. Wait approx. 30 seconds until the door lock temperature cools down.
	<ul style="list-style-type: none"> ■ Flashes (no water supply): Tap turned on? Water inlet filter blocked? Clean the water inlet filter. If an additional water filter has been installed (depending on the model), check for contaminants and clean if required → separate installation and cleaning instruction for water filter. Water hose kinked or blocked? ■ Lights up (low water pressure): For information only. This will not affect the programme progress. The programme duration is extended.
E:18	Drain pump blocked; clean the drain pump. Clean the drainage hose on the siphon.
E:32	Alternating display with End when programme is finished: unbalance problem, spinning phase is aborted.
Other displays	Switch off the appliance, wait for five seconds and then switch it on again. If the display appears again, call customer services.

Faults and what to do about them

Water is leaking from the machine.

- Attach the drain hose correctly or replace it.
- Tighten the screw connection of the drain hose.

The machine is not filling with water.

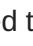

Detergent is not being dispensed.

- Have you pressed the A button?
- Is the tap turned on?
- Could the filter be clogged? Clean the filter ~ Page 22 Note: If an additional water filter has been installed (depending on the model), check for contaminants and clean if required ~ separate installation and cleaning instruction for water filter.
- Is the supply hose kinked or trapped?

The door cannot be opened.

- The safety function is activated. Stop the program?
- Is the E childproof lock activated? Deactivate.
- Is “- - -” selected (Rinse Stop = no final spin)?
- Can the door only be opened by the emergency release?

The program will not start.

- Have you pressed the A or  Ready in// Finished in button?
- Is the door closed?

- Is the E childproof lock activated? Deactivate.
- The drum briefly jerks or judders after the program has started.
- Not a fault – the internal motor test may cause the drum to jerk or judder briefly when the wash program starts.

The water is not draining.

- Is “- - -” selected (Rinse Stop = no final spin)?
- Clean the drain pump ~ Page 20
- Clean the drain pipe and/or the drain hose.
- Water is not visible in the drum.
- Not a fault – the water is below the visible area.

The spin result is not satisfactory.

Laundry is wet/too damp.

- Not a fault – the unbalanced load detection system has interrupted the spin cycle because the laundry is unevenly distributed.
- Distribute small and large items of laundry evenly in the drum.
- Anti-crease (depending on the model) selected?
- Is the selected speed too low?

The spin cycle runs several times.

1. Not a fault – the unbalanced load detection system is adjusting an imbalance.
2. The program is taking longer than usual.
3. Not a fault – the unbalanced load detection system is adjusting an imbalance by repeatedly distributing the laundry.
4. Not a fault – the foam detection is system active – a rinse cycle has been switched on.

The length of the program changes during the wash cycle.

- Not a fault – the program sequence is optimised for the specific washing process. This may change the length of the program shown in the display panel.

Residual water in the careproduct compartment i.

- Not a fault – the effect of the care product is not affected.
- Clean the insert if necessary.
- Odours in the washing machine.
- Depending on the model, run the \hat{U} Drum Clean 90 °C or i Cottons 90 °C program without laundry.

Add washing powder or a detergent containing bleach.

- To prevent foaming, only use half the amount of detergent recommended by the detergent manufacturer. Do not use detergents designed for wool or delicates.
- The Å symbol lights up in the display panel. Foam may also be leaking from the detergent drawer.
- Have you used too much detergent?
- Mix one tablespoon of fabric softener with 1/2 litre of water and pour it into compartment II (not suitable for outdoor clothing, sportswear or items stuffed with down).

Use less detergent in the next wash cycle.

- Loud noises, vibrations and machine "movement" during the spin cycle.
- Is the appliance aligned? Align the appliance ~ Page 30
- Are the appliance's feet fixed? Secure the appliance's feet ~ Page 30
- Have the transport braces been removed?
- Remove the transport braces

The display panel/indicator lights do not work while the appliance is running.

- Has there been a power failure?
 - Have the fuses blown?
1. Reset/replace the fuses.
 2. If the fault occurs repeatedly, call customer services.

There is detergent residue on the laundry.

- Some phosphate-free detergents contain water-insoluble residue.
- Select ' Rinse/Freshen up//Rinse or brush the laundry after washing.
- The symbol lights up in the display in pause mode.

The water level is too high.

- It is not possible to add laundry. Close the door immediately, if necessary.
- Press the A button to continue the program.
- In the pause mode, the è symbol in the display is off.

The door is unlocked. It is possible to add laundry.

1. If you cannot rectify a fault yourself (after switching the machine off and on again) or a repair is required:
2. Switch off the appliance and pull out the mains plug.
3. Turn off the tap and call customer services.

Warning

This content is compiled from multiple sources and is provided for reference purposes only. It may not be complete or fully applicable to all situations. If you are unable to resolve your issue, please contact the product manufacturer or an authorized service provider for official support.

Document generated by [ManualsFile](#)