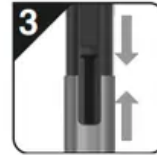
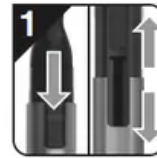
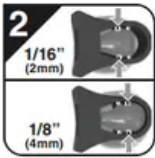
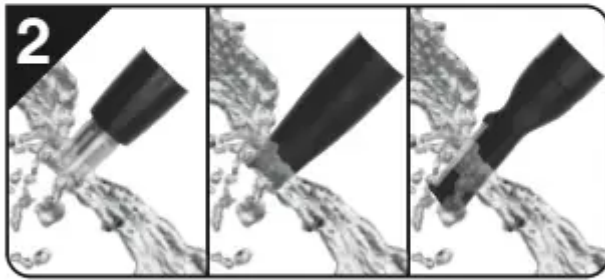
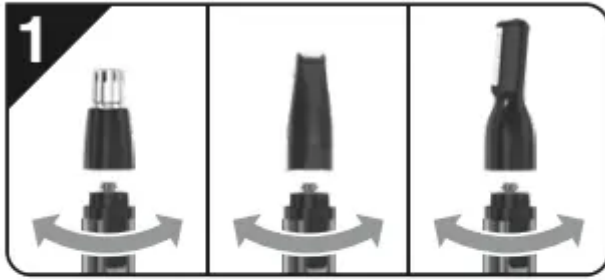


User manual





SERVICE AND REPAIR

If you have problems with your trimmer, send it prepaid with a note explaining the problem to:

- Wahl Clipper Corporation
- Attn: Repair Department
- 3001 Locust Street
- Sterling, Illinois 61081
- Telephone (800) 767-9245

For products purchased outside the United States, contact your distributor

IMPORTANT SAFEGUARDS

When using your electrical appliance, basic precautions should always be followed, including the following:

READ ALL INSTRUCTIONS AND SAFEGUARDS BEFORE USING THIS APPLIANCE.

DANGER: To reduce the risk of death or injury by electric shock:

1. Do not reach for an appliance that has fallen into water. Unplug immediately from the outlet. Note: Some electrical parts inside the appliance are electrically live, even with the switch “off.”
2. Do not use while bathing or in a shower.
3. Do not place or store appliance where it can fall or be pulled into a tub or sink. Do not place in or drop into water or other liquid.
4. Always unplug this appliance before cleaning. For an appliance that has a permanently attached cord:
5. Always unplug this appliance from the electrical outlet immediately after using. For an appliance that has a rechargeable battery:
6. Always unplug the charger from the electrical outlet immediately after use or after charging the battery.
7. (Rechargeable Unit Only) Unplug the charger before using appliance.

WARNING: To reduce the risk of burns, electrical shock or injury to persons:

1. This appliance can be used by children aged from 14 years and above and persons with reduced physical, sensory or mental capabilities or lack of experience and knowledge if they have been given supervision or instruction, by a person responsible for their safety, concerning the use of the appliance in a safe way and understand the hazards involved. Children should be supervised to ensure that they do not play with the appliance. Cleaning and user maintenance shall not be made by children without supervision.
2. Use this appliance only for its intended use as described in this manual. Do not use attachments not recommended by the manufacturer.
3. Never operate this appliance if it has a damaged cord or plug, if it is not working properly, if it has been dropped or damaged, or if it has been dropped into water. Return the appliance to Wahl Clipper Corporation for examination and repair.
4. Keep the cord away from heated surfaces.
5. Never operate the appliance with the air openings blocked or while on a soft combustible surface, such as a bed or couch, where air openings may be blocked. Keep the air openings (if any) free from lint, hair or the like.
6. Do not use outdoors or operate where aerosol (spray) products are being used or where oxygen is being administered.
7. Never drop or insert any object into any opening.
8. Do not use this appliance with a damaged or broken comb nor with teeth missing from the blades, as injury may occur. Before use, make certain blades are aligned properly. (See Clipper Maintenance Instructions. May not be applicable for all appliances.)

9. During use, do not place or leave the appliance where it is expected to be subject to damage by an animal, or exposed to weather.
10. To disconnect, turn all controls to “OFF,” then remove plug or charger from outlet.
11. Turn all controls to “OFF” before placing on or removing blades or attachments.
12. An appliance with a permanently attached cord should never be left unattended when plugged in.
13. Keep this appliance dry. For an appliance that has a rechargeable battery:
14. Do not crush, disassemble, heat above 100°C (212°F), or incinerate the appliance, due to risk of fire, explosion, or burns.
15. Use only the charger supplied by the manufacturer to recharge.
16. This charger is intended to be correctly orientated in a vertical or floor mount position.
17. Always attach plug to appliance first, then to outlet.

For AA/AAA NonRechargeable Battery Units:

1. When discarding an old battery, do not throw it into fire where heat could cause it to rupture or explode. Also, do not attempt to recharge alkaline, heavy-duty, or lithium batteries in a battery charger. Remove the exhausted batteries from the appliance, and dispose properly.
2. Risk of fire and burns. Do not recharge, disassemble, or incinerate. Keep battery out of reach of children. Dispose of used batteries promptly.
3. Different types of batteries (alkaline, standard, rechargeable, etc.) or new and used batteries are not to be mixed.
4. If the appliance is to be stored unused for a long period, the batteries should be removed.
5. The battery terminals are not to be short-circuited.

For Products Marked with an FCC Approval:



1. This device complies with part 15 of the FCC Rules. Operation is subject to the following two conditions: (1) This device may not cause harmful interference, and (2) this device must accept any interference received, including interference that may cause undesired operation.
2. Changes or modifications not expressly approved by the party responsible for compliance could void the user’s authority to operate this device.

3. NOTE: This equipment has been tested and found to comply with the limits for a Class B digital device, pursuant to part 15 of the FCC Rules. These limits are designed to provide reasonable protection against harmful interference in a residential installation. This equipment generates, uses, and can radiate radio frequency energy and, if not installed and used in accordance with the instructions, may cause harmful interference to radio communications. However, there is no guarantee that interference will not occur in a particular installation. If this equipment does cause harmful interference to radio or television reception, which can be determined by turning the equipment off and on, the user is encouraged to try to correct the interference by one or more of the following measures:

- Reorient or relocate the receiving antenna.
- Increase the separation between the equipment and receiver.
- Connect the equipment into an outlet on a circuit different from that to which the receiver is connected.
- Consult the dealer or an experienced radio/TV technician for help

Q & A

1. What size battery do I need?

- The trimmer uses 1 AAA battery. (Battery not included)

2. How do I clean the trimmer?

- Simply remove the trimmer head, and rinse head under running water. Do not submerge the trimmer.

3. Is this product waterproof?

- No, but the heads can be removed and rinsed for hygienic grooming.

4. How do I change the trimmer heads?

- Hold the metal base in one hand and with the other twist the cutting head counterclockwise until it is loose - about $\frac{1}{4}$ of a turn and to replace just follow the same steps but twist on clockwise $\frac{1}{4}$ turn.

5. What do I do if the trimmer head comes apart?

- There are small pieces within the trimming head and while they can be put back together, it can prove quite frustrating. Wahl sells a set of all three heads (58132) or you can contact Wahl at and we will help you.

6. Anyone know how to clean this thing with more than just hot water?... has a foul smell now after a few months of use.

- Please try this: soak it in some warm water with a few drops of antibacterial hand soap and rinse well. If that doesn't work then try using a mild hydrogen peroxide/water solution to soak it. Just make sure you rinse it really well You can always contact Wahl at help@wahlclipper.com and see how you can get a new nose trimmer head.

7. How do I install the eyebrow trimmer

- It slides over the long trimmer blade. There are arrows on one end of the attachment, that is the end you slide over the blade first. There are two settings, shorter and longer.

8. Why doesThe nose trimmer have no cutting blades?

- The nose trimmer should have a blade in the middle. If your blade head is empty, you are missing the black blade insert. Please contact Wahl at help@wahlclipper.com and we cna get you a new nose trimmer head.

9. Will this trim my eye brows too short?

- No. Think of shaving your beard, the more pressure on your skin with the shaver, the shorter the hair becomes. You use this just you are cutting your beard. You can also youtube on how to use this item. Type in the following information on youtube and watch the video. "Beard Trimming - Wahl Micro GroomsMan Precision Trimmer - Model 5640"
Let me know if you have any more questions.

10. It fell down. Let us know how to assemble??

- There's a couple videos on YouTube that demonstrate re-assembling these when they break apart.

Warning

This content is compiled from multiple sources and is provided for reference purposes only. It may not be complete or fully applicable to all situations. If you are unable to resolve your issue, please contact the product manufacturer or an authorized service provider for official support.