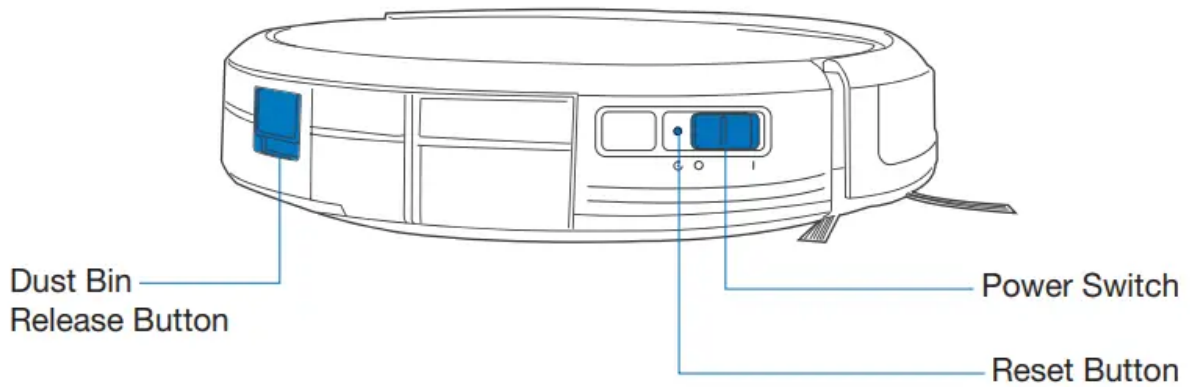
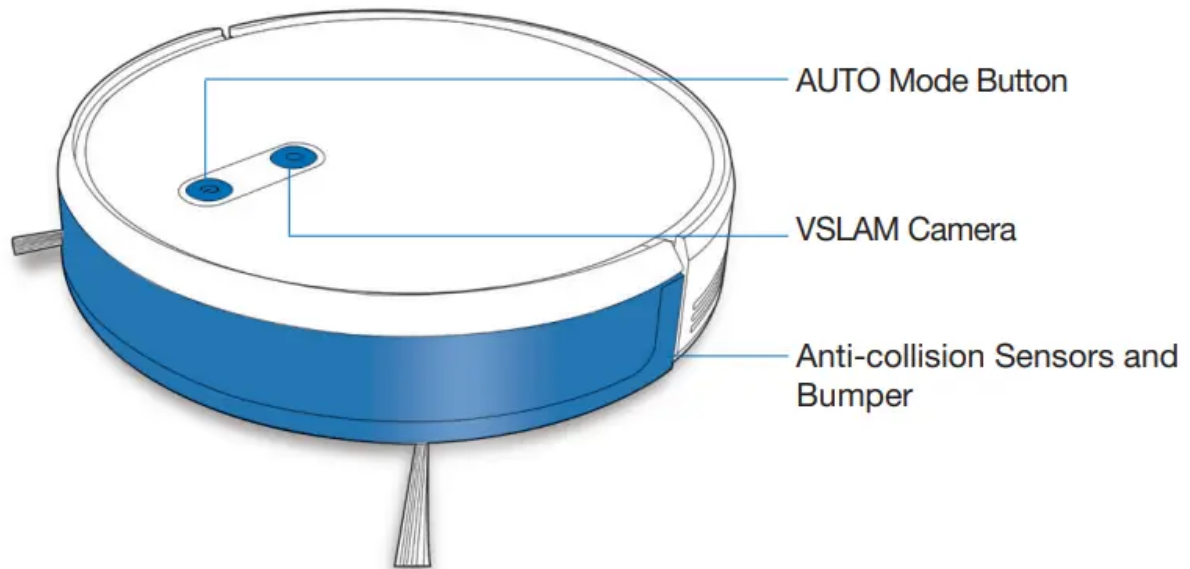


Product Diagram

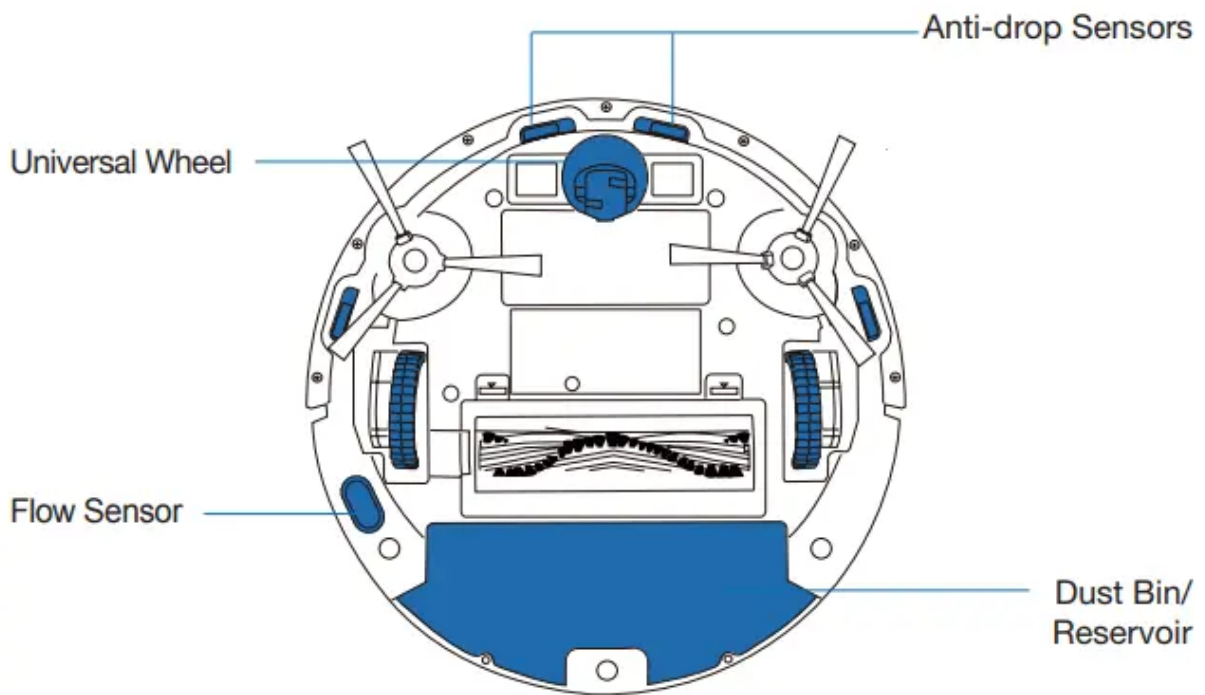
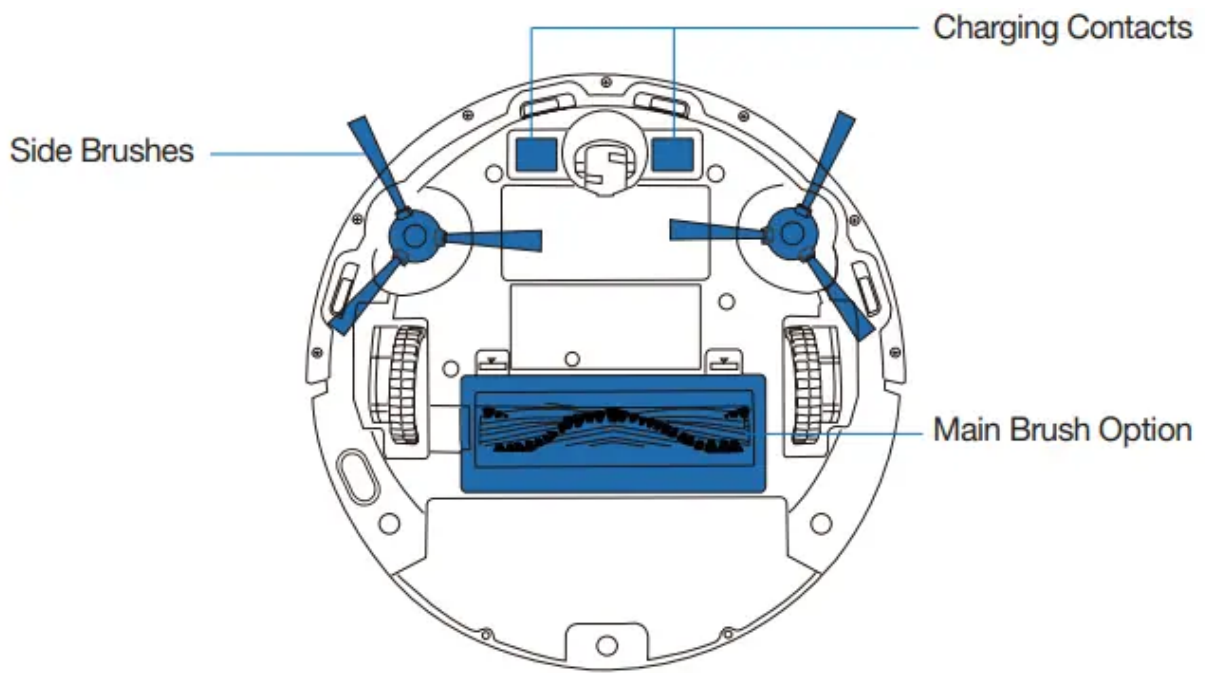
Robot



(Press and hold **GO** for 5 seconds. The robot will revert to the factory settings. Use this button with caution.)

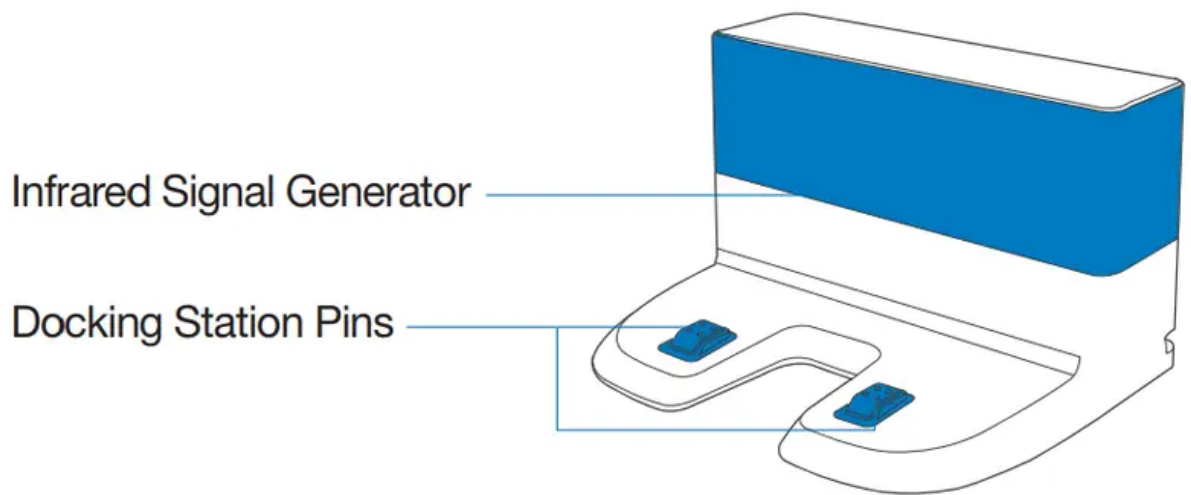
Bottom View



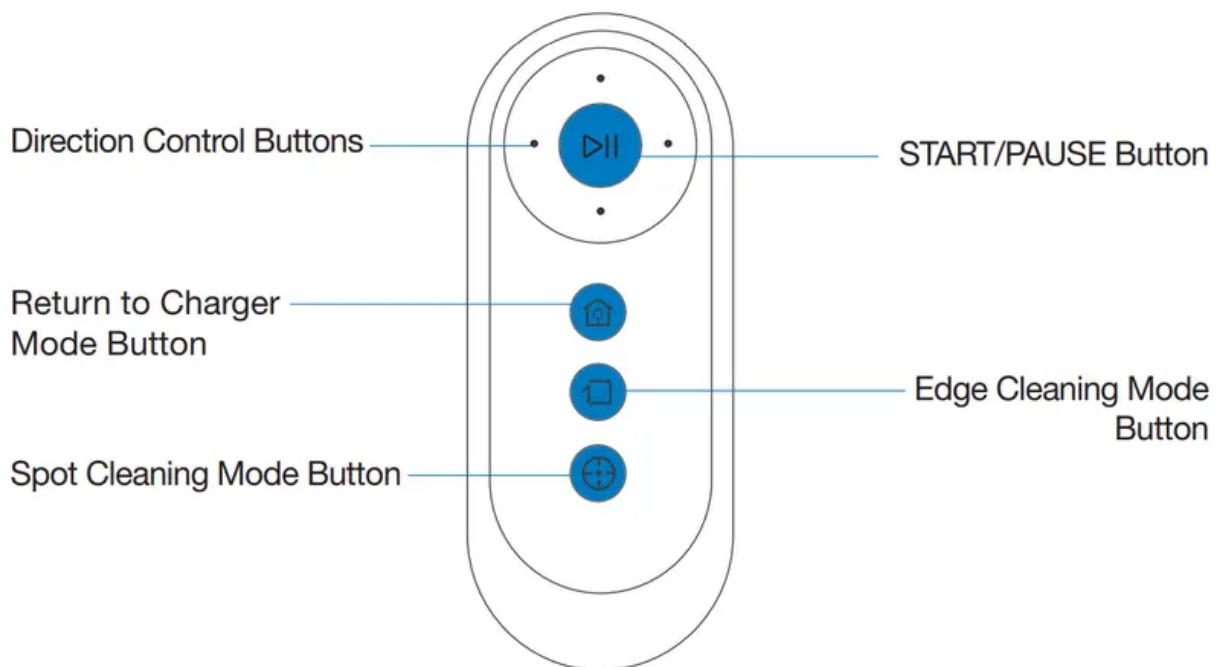


Docking Station

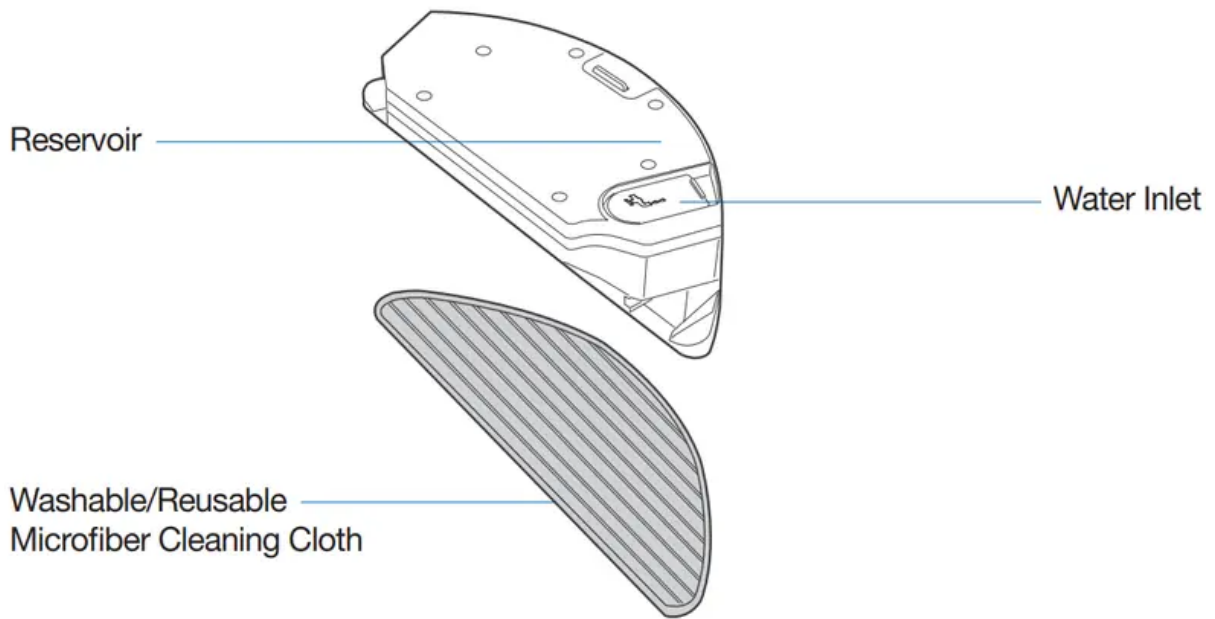




Remote Control



Advanced Mopping System

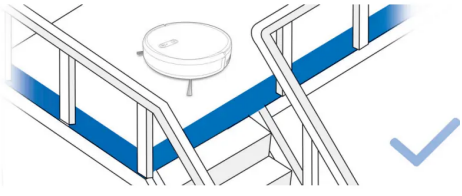
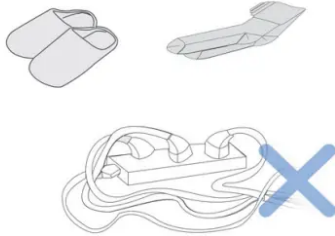


Operating and Programming

Notes Before Cleaning

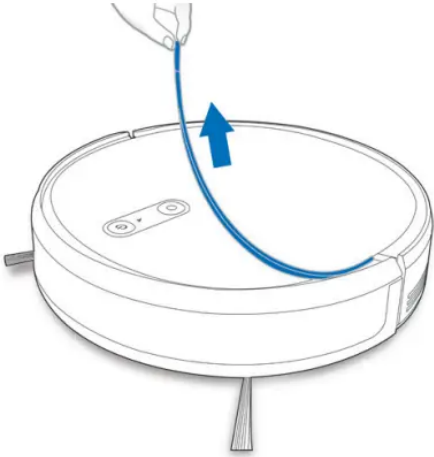
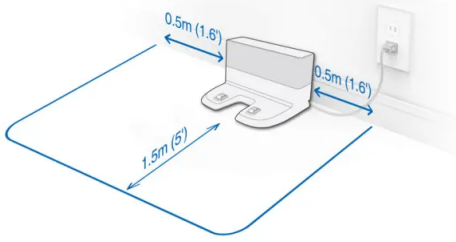
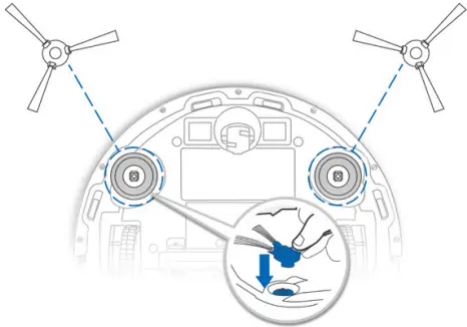
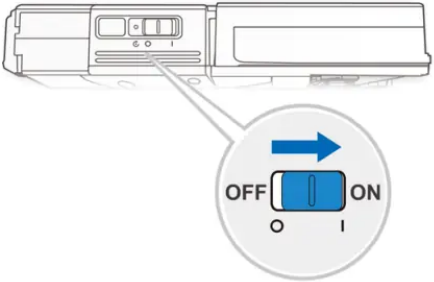
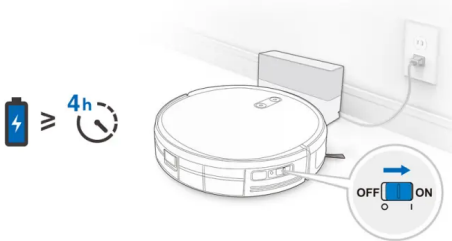
WARNING: Do not use the robot on wet surfaces or surfaces with standing water.

<p>Before using the product on a rug with tasseled edges, please fold the rug edges under.</p>	<p>Tidy up the area to be cleaned by putting furniture, such as chairs, in their proper place.</p>

 <p>A line drawing showing a robot on a platform. A blue barrier is placed at the edge of the platform. A blue checkmark is in the bottom right corner.</p>	 <p>A line drawing showing a robot on a platform. There are power cords and small objects (like a sock) on the floor. A blue X is in the bottom right corner.</p>
<p>It may be necessary to place a physical barrier at the edge of a drop to stop the unit from falling over the edge.</p>	<p>Remove power cords and small objects from the floor that the robot could be obstructed by</p>



Preparation

	<p>1. Remove Protective Strip</p>
	<p>2. Docking Station Placement</p>
	<p>3. Install Side Brushes</p>
	<p>4. Power ON</p>
	<p>5. Charge the robot</p>

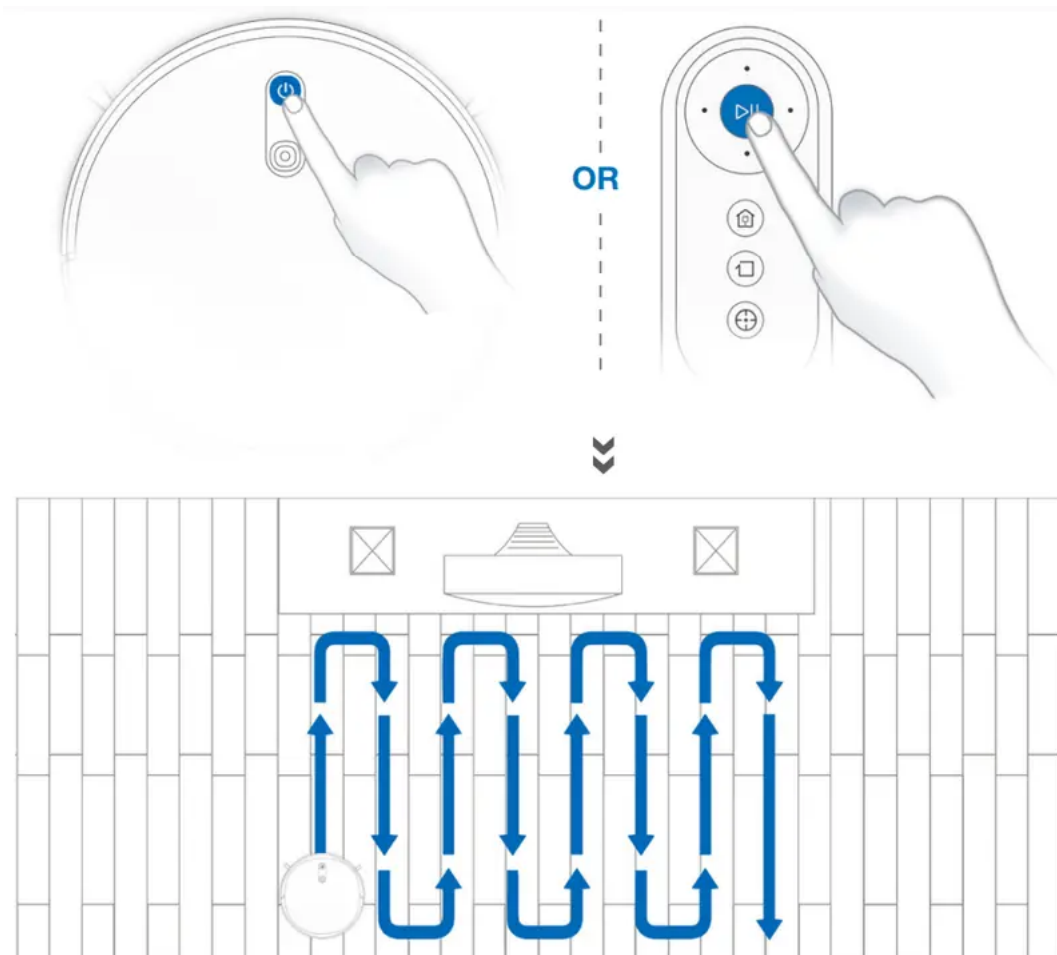


Note: When the robot completes the cleaning cycle or when battery power gets low, the robot automatically returns to the Docking Station to recharge itself.

Selecting Cleaning Mode

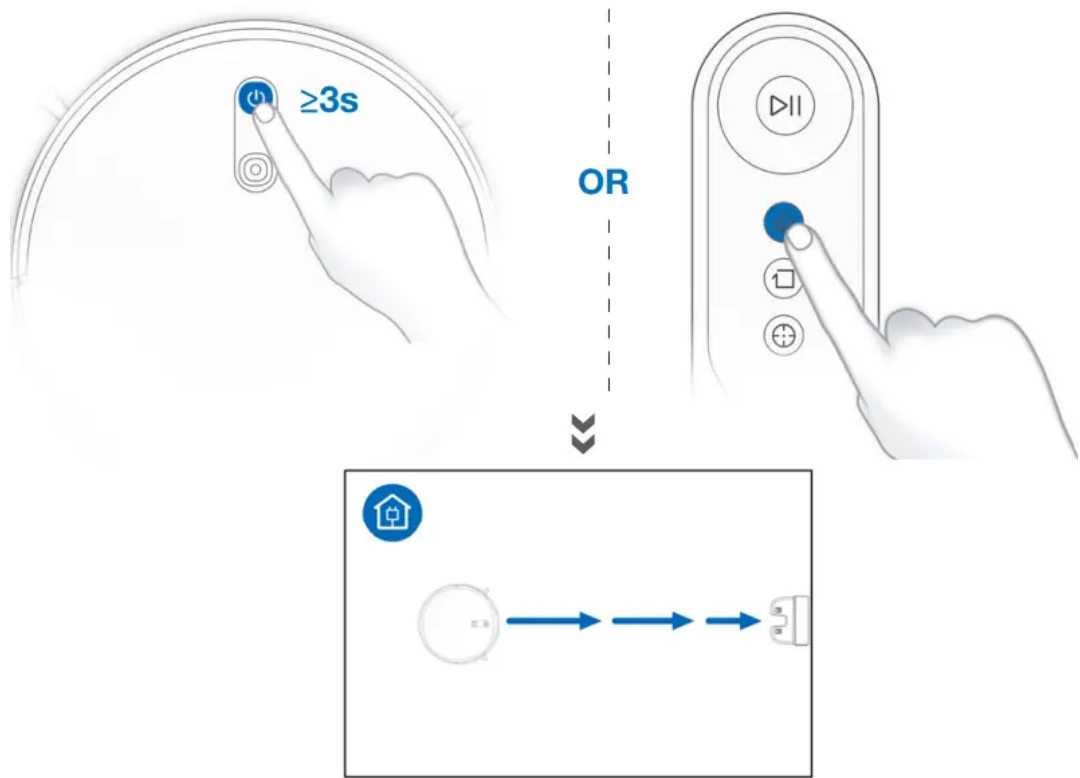
1. AUTO Cleaning Mode

A Programmed Cleaning Pattern (optimized for hard floors) will be selected by default.

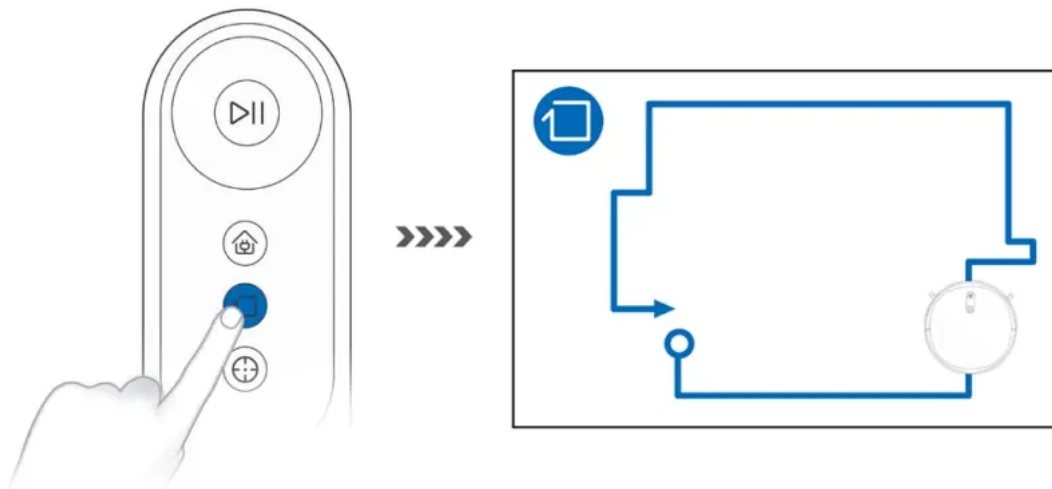


2. Return to Docking Station



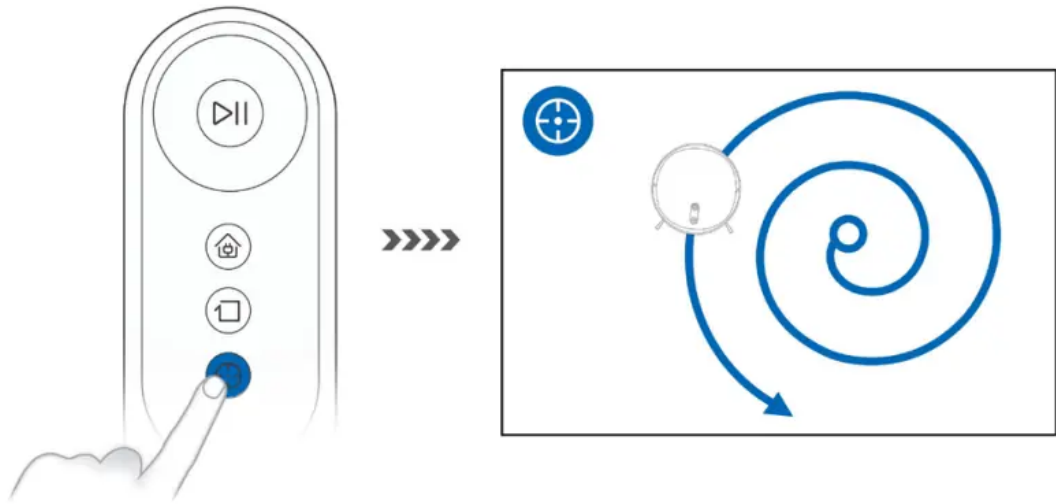


3. Edge Cleaning Mode

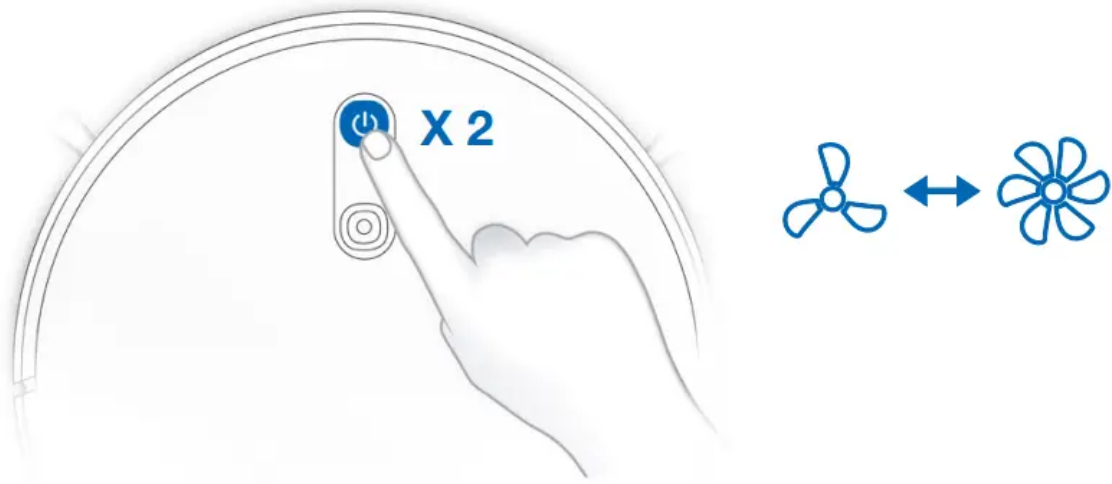


4. Spot Cleaning Mode



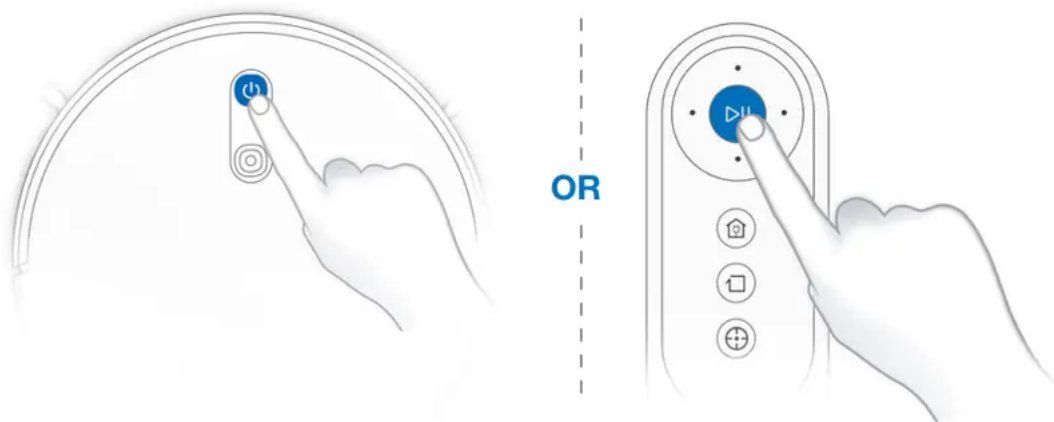


Switch vacuum power



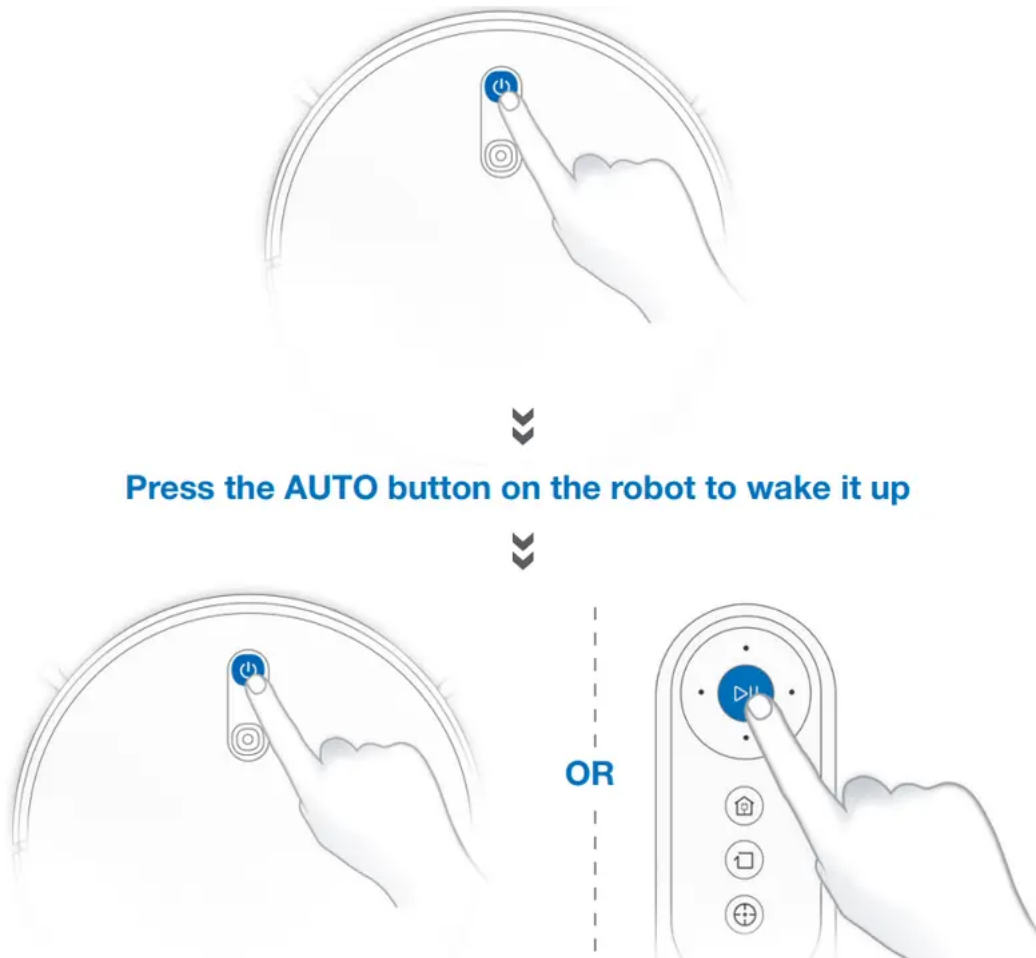
Pause, Wake Up, Power Off

1. Pause

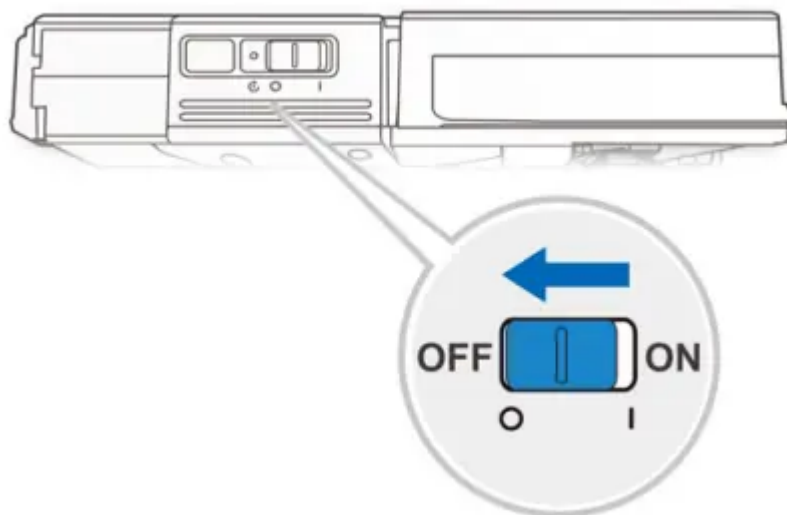


Note: The robot's Control Panel stops glowing after the robot is paused for a few minutes. Press the AUTO Mode Button on the robot to wake up the robot.

2. Wake Up



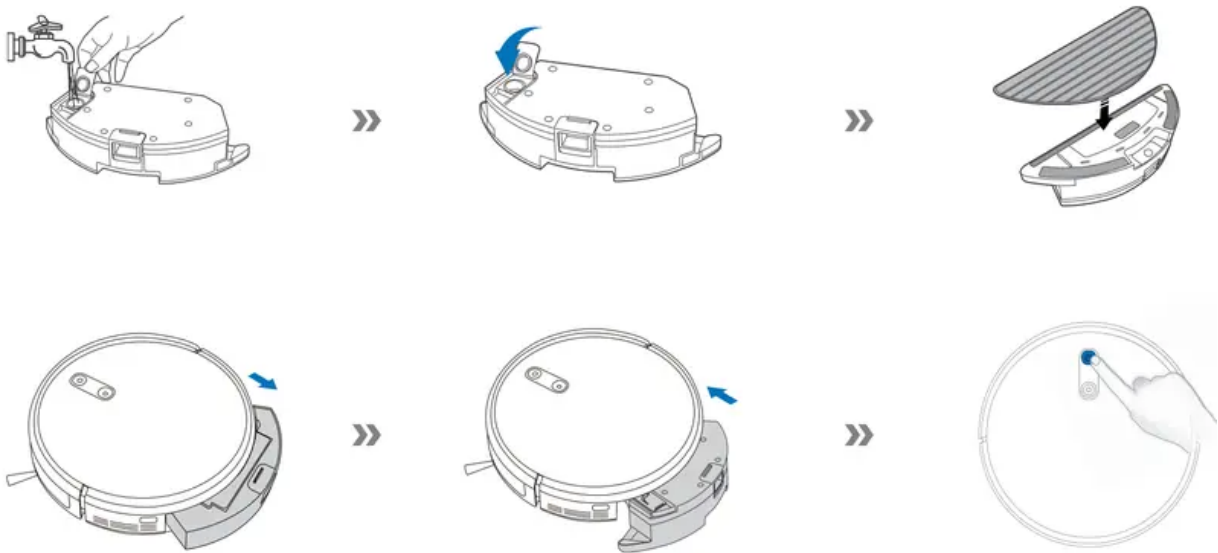
3. Power OFF



Note: When the robot is not working, it is recommended to keep it switched ON and charging.

Optional Mopping System

Note: Empty the Reservoir and remove the Cleaning Cloth Plate before cleaning on carpet. When using the mopping system, fold area rug edges under themselves so the robot will avoid the rug. Be sure to use only water, and do not put washer fluid or any other cleaning solution in the Reservoir.



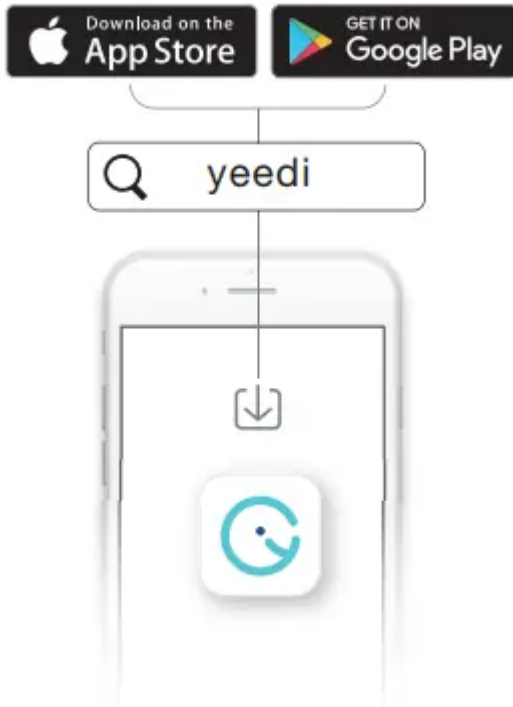
Note: After the robot finishes mopping, empty any remaining water from the Reservoir.

yeedi App


To enjoy all available features, it is recommended to control your Robot via the yeedi App.

Before you start, make sure that:

- Your mobile phone is connected to a Wi-Fi network.
- The 2.4GHz band wireless signal is enabled on your router.
- The Wi-Fi indicator light on Robot is slowly flashing.



Wi-Fi Indicator Light

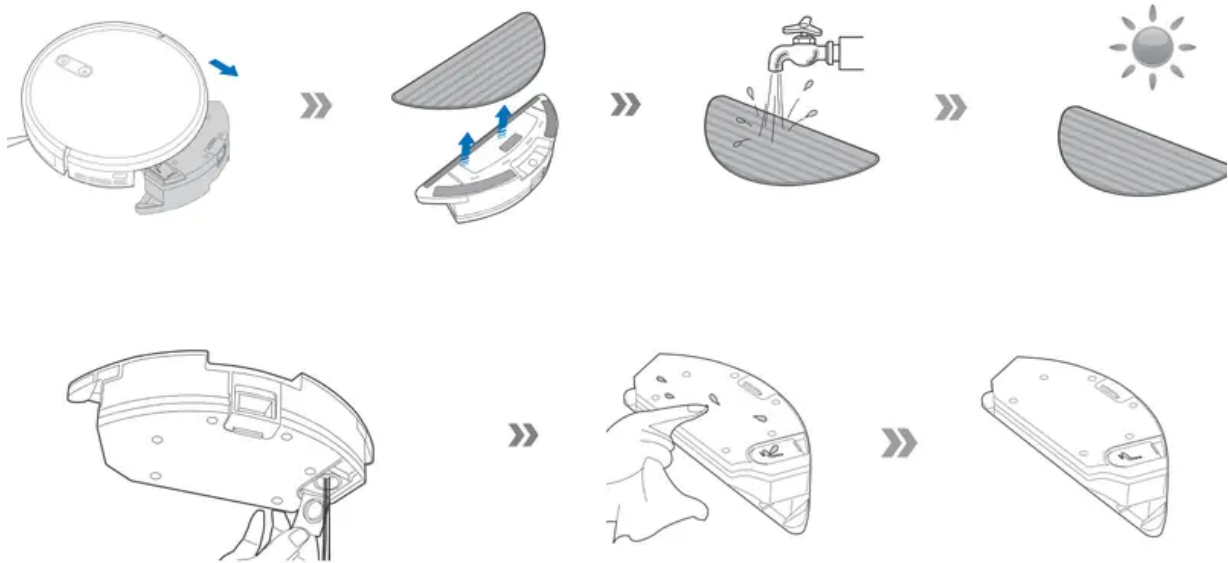
	Slowly flashing	Disconnected to Wi-Fi or waiting for Wi-Fi connection
	Rapidly flashing	Connecting to Wi-Fi
	Solid	Connected to Wi-Fi

Tips: If you have any problems during the Wi-Fi setup process, refer to the Troubleshooting > Wi-Fi Connection section in this manual.

Maintenance

Before performing cleaning and maintenance tasks on the robot, turn the robot OFF and unplug the Charging Dock.

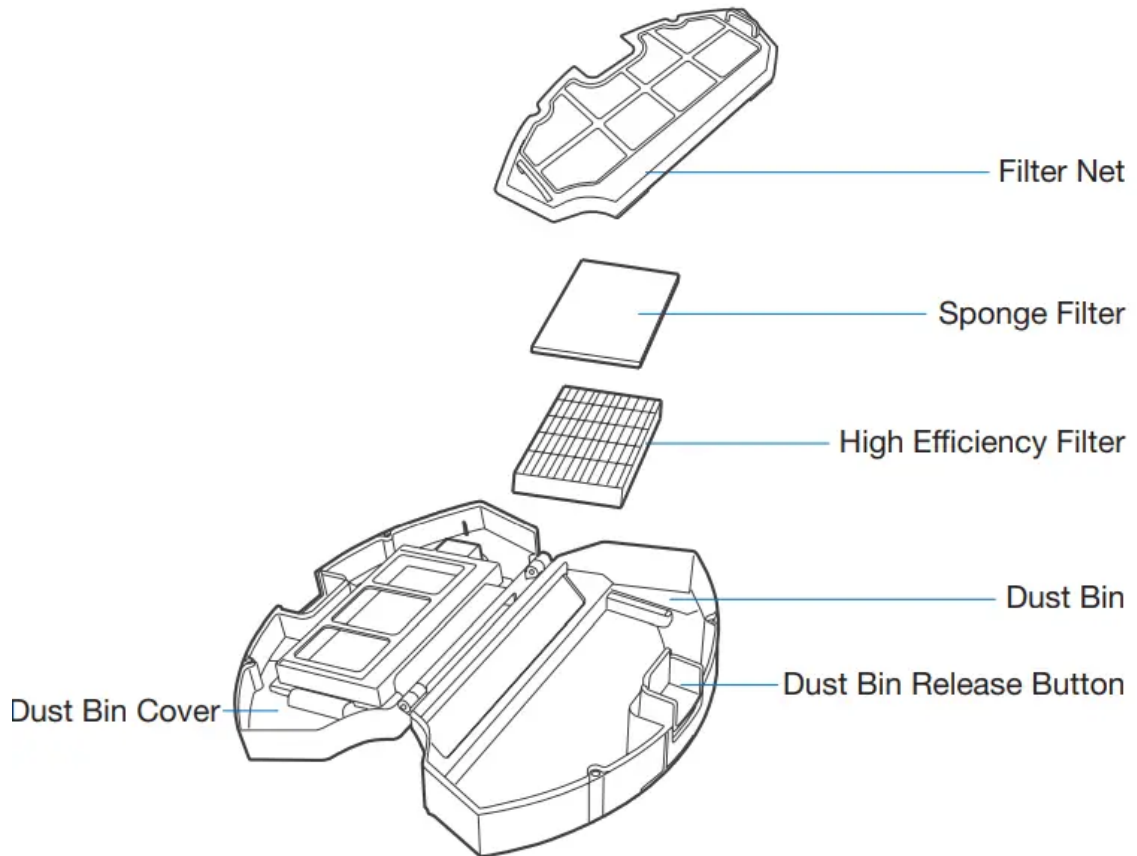
Optional Mopping System

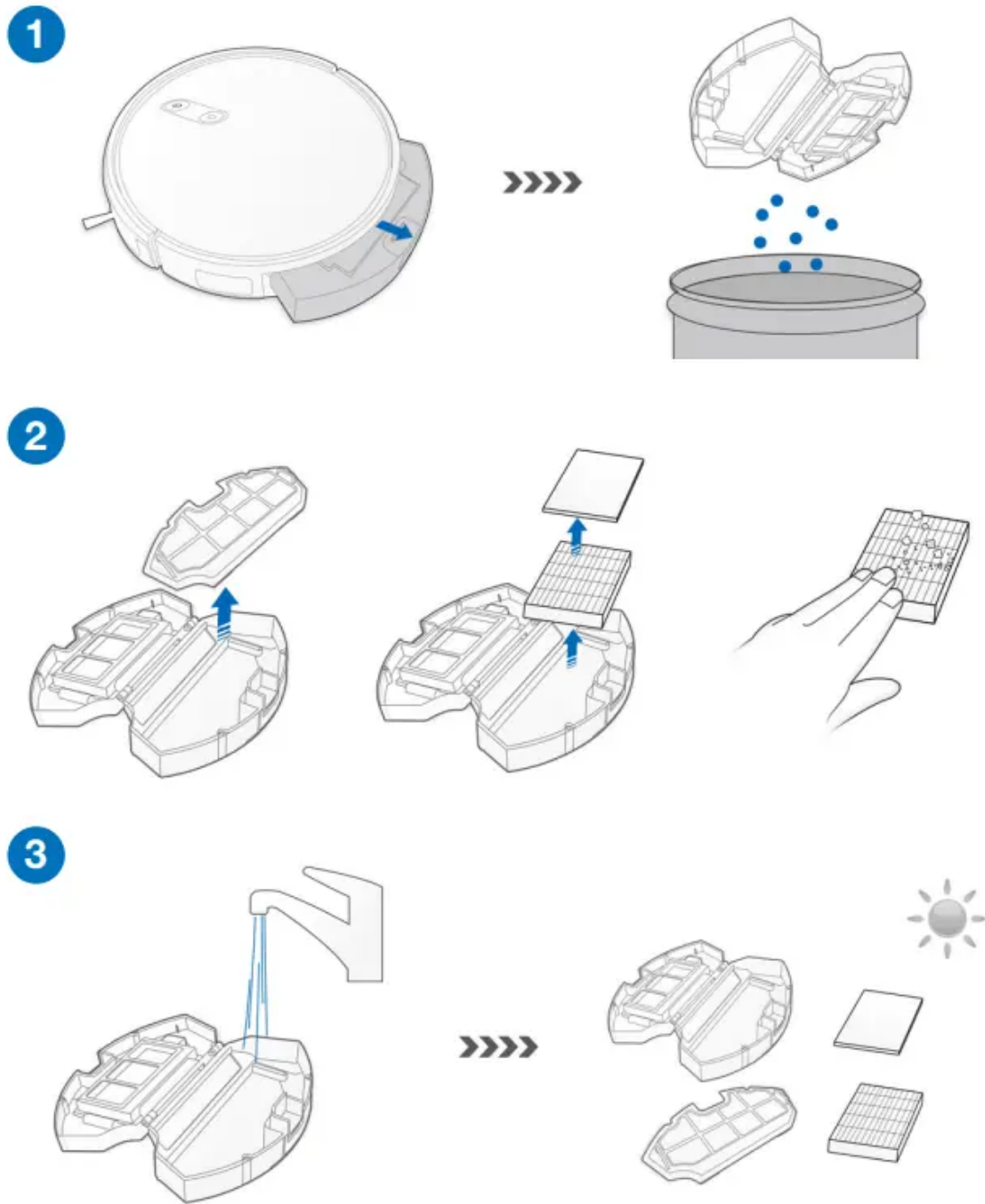


Before performing cleaning and maintenance tasks on the robot, turn the robot OFF and unplug the Docking Station.

Dust Bin and Filters

Dust Bin



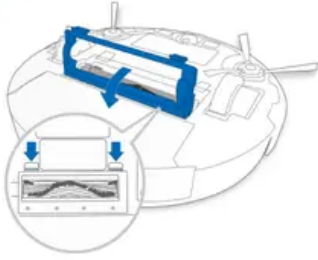


Main Brush and Side Brushes

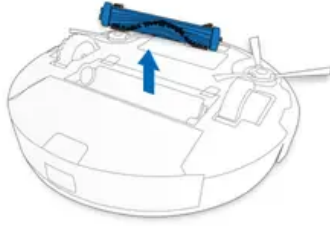
Note: A Multi-Function Cleaning Tool is provided for easy maintenance. Handle with care, this cleaning tool has sharp edges.

Main Brush

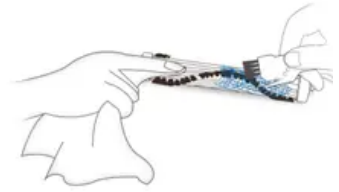
1



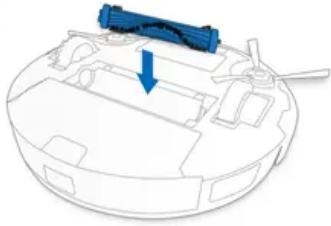
2



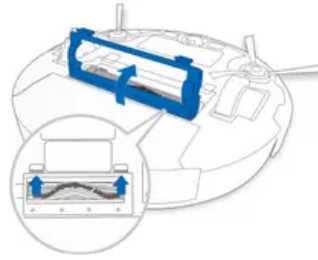
3



4

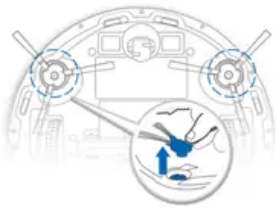


5



Side Brushes

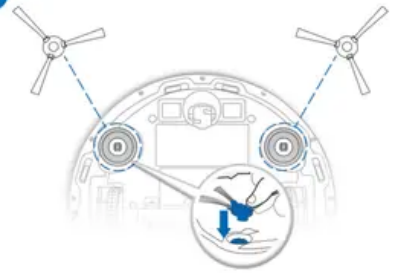
1



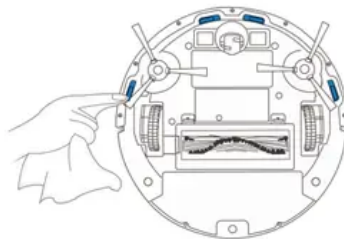
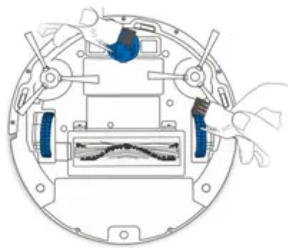
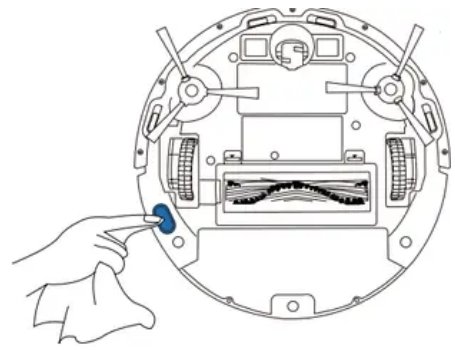
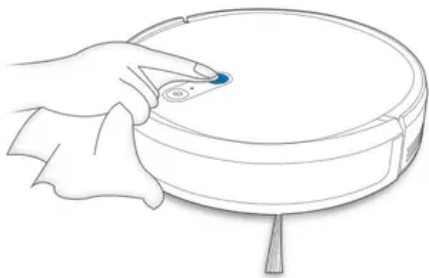
2

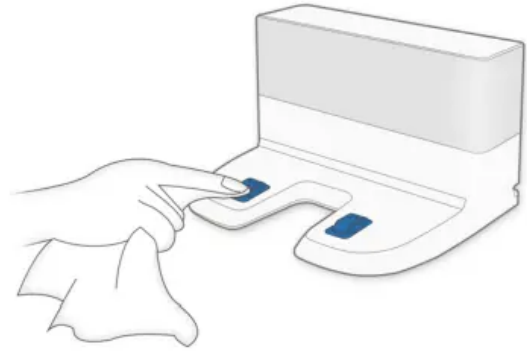
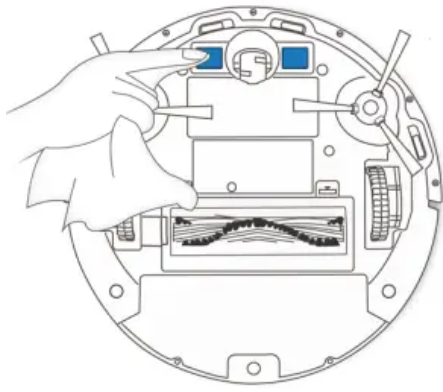


3



Other Components





Note: Before cleaning the robot's Charging Contacts and Docking Station Pins, turn the robot OFF and unplug the Docking Station.

Regular Maintenance

To keep the robot running at peak performance, perform maintenance tasks and replace parts with the following frequencies:

Robot Part	Maintenance Frequency	Replacement Frequency
Side Brush	Once every 2 weeks	Every 3-6 months
Main Brush	Once per week	Every 6-12 months
Sponge Filter/ High Efficiency Filter	Once per week	Every 3-6 months
Universal Wheel Anti-Drop Sensors Bumper Charging Contacts Docking Station Pins	Once per week	/

A multi-function Cleaning Tool is provided for easy maintenance. Handle with care, this cleaning tool has sharp edges.

Note: YEEDI manufactures various replacement parts and fittings. Please contact Customer Service for more information on replacement parts.

Indicator Light and Alarm Sounds

Indicator Light

Scenario	Indicator Light
The robot is cleaning	AUTO Mode Button glows a solid WHITE
The robot is charging	AUTO Mode Button flashes WHITE
The robot has low battery	AUTO Mode Button glows a solid RED
The robot has a problem	AUTO Mode Button flashes RED
Programmed Cleaning Pattern is enabled	Cleaning Mode Switch Indicator lights up



Troubleshooting



Malfunction	Possible Causes	Solutions
The robot is not charging.	The robot is not switched ON.	Switch ON the robot.
	The robot has not connected to the Docking Station.	Be sure that the robot's Charging Contacts have connected to the Docking Station Pins.
	The battery is completely discharged.	Re-activate the battery. Switch ON the robot. Place the robot on the Docking Station by hand, remove after charging for 3 minutes, repeat 3 times; then charge normally.
The robot cannot return to the Docking Station.	The Docking Station is not correctly placed.	Please refer to Section "Preparation" to place the Docking Station correctly.
	The Docking Station is unplugged or moved manually during the cleaning.	Please make sure the Docking Station is plugged in and avoid move the Docking Station manually when the robot is cleaning.
	The robot is working in a dark environment.	Make sure the rooms to be cleaned are well illuminated.
	The robot is stuck by obstacles (including wires, carpet tassels, or electric fan bases, etc.), or the door of the room where the Docking Station is placed is closed.	Please refer to Section "Notes Before Cleaning" to tidy up the space before using the robot.
	The robot is paused for more than 60 minutes, or manually moved out of 1-meter radius of the original position during the cleaning.	It is suggested to pause the robot for no more than 60 minutes. When moving the robot, keep the robot within 1-meter radius of the original position. To ensure the cleaning efficiency, please try to

		avoid pausing or moving the robot during the cleaning.
	The robot did not start cleaning from the Docking Station.	It is suggested to start the robot from the Docking Station.
The robot gets stuck while working and stops.	The robot is tangled with something on the floor (electrical wires, curtains, carpet fringing, etc.).	The robot will try various ways to free itself. If it is unsuccessful, manually remove the obstacles and restart.
The robot returns to the Docking Station before it has finished cleaning.	When the battery gets low, the robot automatically switches to Return to Charger Mode and returns to the Docking Station to recharge itself.	This is normal. No solution necessary
	Working time varies according to floor surface, room complexity and the Cleaning Mode selected.	This is normal. No solution necessary
The robot does not clean the whole area.	The cleaning area is not tidy	Remove small objects from the floor and tidy up the cleaning area before the robot starts cleaning.

Technical Specifications

Model	K702G		
Working Voltage	14.4V DC		
Docking Station Model	CH1630RC		
Rated Input	100-130V AC, 50/60Hz, 0.5A	Rated Output	20V DC, 0.8A
Remote Control Model	RC1633	Working Voltage	3 V DC

Note: Technical and design specifications may be changed for continuous product improvement.

Warning

This content is compiled from multiple sources and is provided for reference purposes only. It may not be complete or fully applicable to all situations. If you are unable to resolve your issue, please contact the product manufacturer or an authorized service provider for official support.

Document generated by [ManualsFile](#)