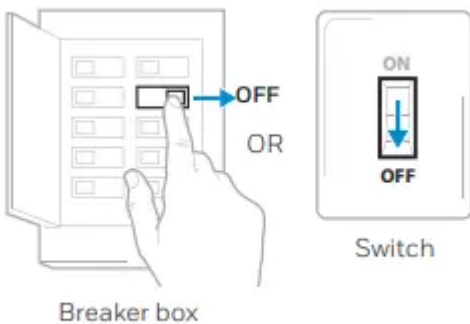


## Removing your old thermostat

### 1. Turn off power

To protect your equipment, turn off the power at the breaker box or switch that controls your heating and cooling equipment.

**Note:** The thermostat off switch will not turn off the power to the equipment.

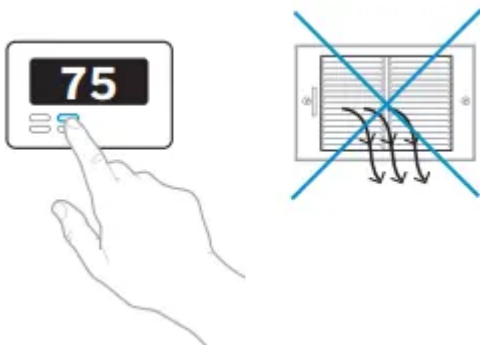


### 2. Check that your system is off

Change the temperature on your old thermostat so that your system starts heating or cooling.

If you don't hear or feel the system turn on within 5 minutes, the power is off.

**Note:** If you have a digital thermostat that has a blank display, skip this step.



### 3. Remove your existing thermostat from the wall plate

On most thermostats, you can take off the thermostat by grasping and gently pulling. Some thermostats may have screws, buttons, or clasps.

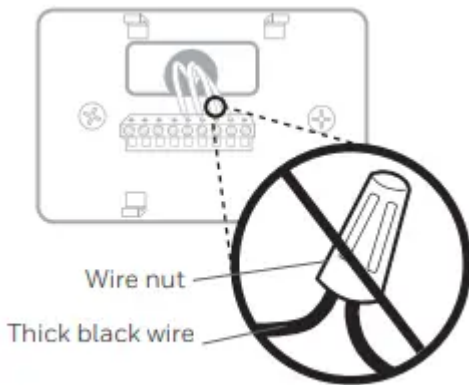
**WARNING :** Do not remove any wires from your thermostat at this time!



#### 4. Do you have a line voltage system?

Line voltage systems have thick black wires with wire nuts or are labeled high voltage (120V or higher).

- yes : Your system is not compatible. Call 1-855-733-5465 to find a proinstaller in your area.
- no : Continue to the next step.



#### 5. Take a picture of your existing wall plate's wiring

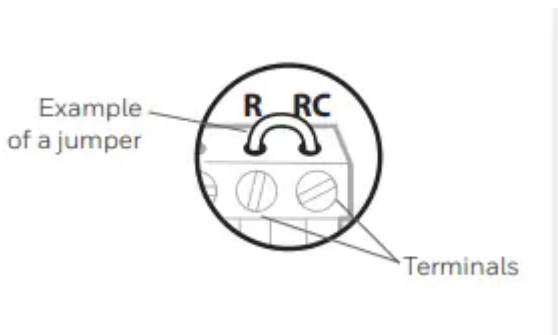
In order to capture all of the letters next to the terminals, be sure to take multiple pictures from different angles.

You may need to reference this image later.



#### 6. Remove any jumpers

A jumper is used to connect two terminals. It may look like a small staple or a colored wire. Do not discard. Keep jumpers with your old wallplate.



7. Label the wires

Use the stickers provided with your new thermostat to label each wire on your existing wall plate.

Do not label jumpers. Your new thermostat does not need jumpers.



8. Write down the colors of the wires

Check the boxes and write down the color of the wires connected to terminals that are coming from the wall. Check all that apply (not all will apply).

Terminal	Wire Color	Terminal	Wire Color
<input type="checkbox"/> A or L/A	_____	<input type="checkbox"/> R	_____
<input type="checkbox"/> C	Required* _____	<input type="checkbox"/> Rc	_____
<input type="checkbox"/> E	_____	<input type="checkbox"/> Rh	_____
<input type="checkbox"/> G	_____	<input type="checkbox"/> W	_____
<input type="checkbox"/> K	_____	<input type="checkbox"/> W2 or Aux	_____
<input type="checkbox"/> O/B	_____	<input type="checkbox"/> Y	_____
<input type="checkbox"/> U (1 or 2)	_____	<input type="checkbox"/> Y2	_____

**\*A C-wire or C-Wire Power Adapter (included) is required**

**If there are wires in terminals that are not listed, you will need additional wiring support.**

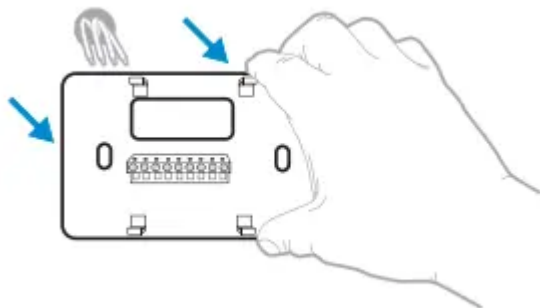
Visit [honeywellhome.com/support](http://honeywellhome.com/support) to find out more.



9. Disconnect the wires and remove the old wall plate

You may need a screwdriver to release wires from terminals.

**Tip:** Wrap the wires around a pencil to prevent them from falling in the wall.



10. Do you have a C-Wire?

Look at the thermostat wiring checklist from Step 8, or the photo you took. Is the C-Terminal checked?

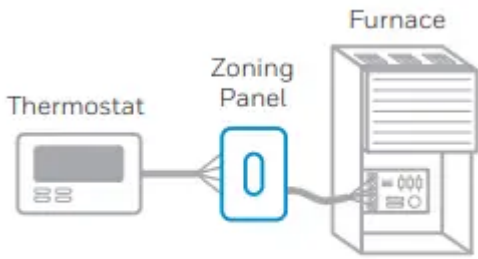
- yes : This means you will not need to install the included C-Wire Adapter. Skip to Installing Your New Thermostat
- no : This means you don't have a C-wire connected to your thermostat. Continue to next step.



11. Do you have a zoning panel?

You have a zoning panel if you have multiple thermostats and one furnace or heating system.

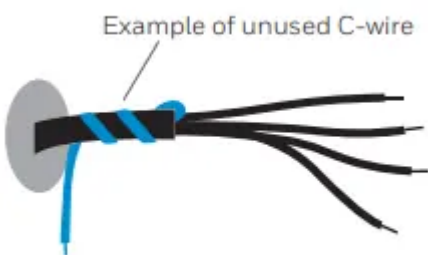
- yes : C-Wire Adapter installation is more complicated on zoned systems. Call 1-855-733-5465 to find a pro-installer.
- no : Proceed to the next step.



12. Do you have an unused wire?

Look at the bundle of wires coming from the wall.

**Note:** You may have to pull the bundle of wires out from the wall to find the unused wire.



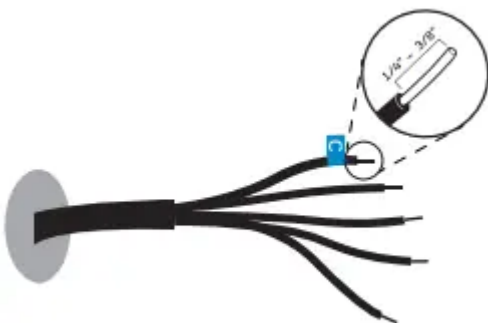
13. Label unused wire

Label your unused wire with the provided "C" sticker label. You may need to use a wire stripper to expose at least 1/4 inch of the wire.

**Note:** If you have multiple unused wires, then label only one wire and make note of the color here:

**Go to your furnace or heating system**

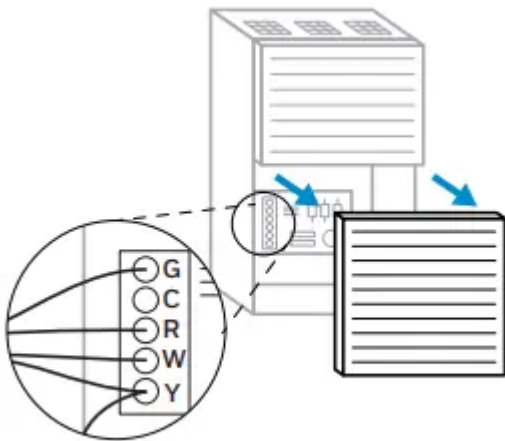
This system is often located in your basement, attic or garage. Bring a flashlight and screwdriver.



14. Remove cover from furnace or heating system

Open the heating and cooling system's cover to find the control board. You should see the same terminal labels that are on your thermostat.

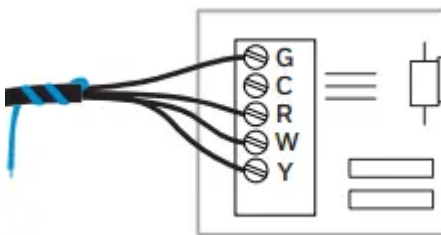
**Note:** You may need to unscrew the cover. The control board may be at the top or bottom.



15. Find the other end of the unused wire

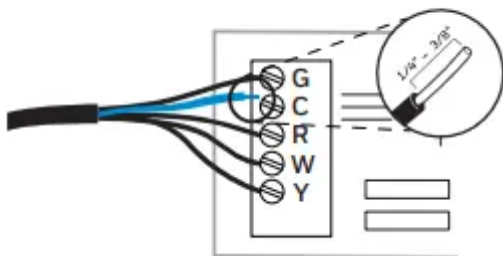
Locate the bundle of wires that are the same as the ones at your thermostat.

The unused wire should be the same color as the one near your existing thermostat. See Step 13 for the color you wrote down.



16. Connect the unused wire to the C-terminal

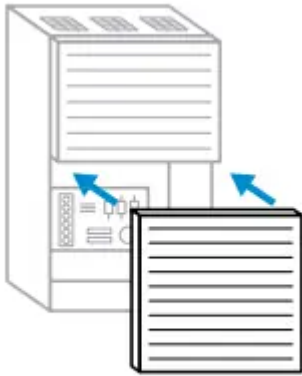
Note: If there are existing wires in the C-terminal, make sure they are still connected to the C-terminal after connecting this wire.



17. Close the cover to the furnace or heating system

Be sure the cover is completely closed. Some systems will not power up if the cover isn't fully closed.

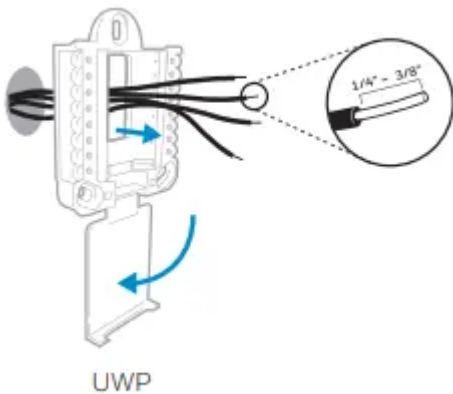
You've connected the C-wire. You will NOT need to use the included C-Wire Adapter.



### 18. Position wall plate

Pull open the wall plate that was included with your new thermostat. Insert the bundle of wires through the back of the wall plate.

Make sure at least 1/4-inch of each wire is exposed for easy insertion into the wire terminals.



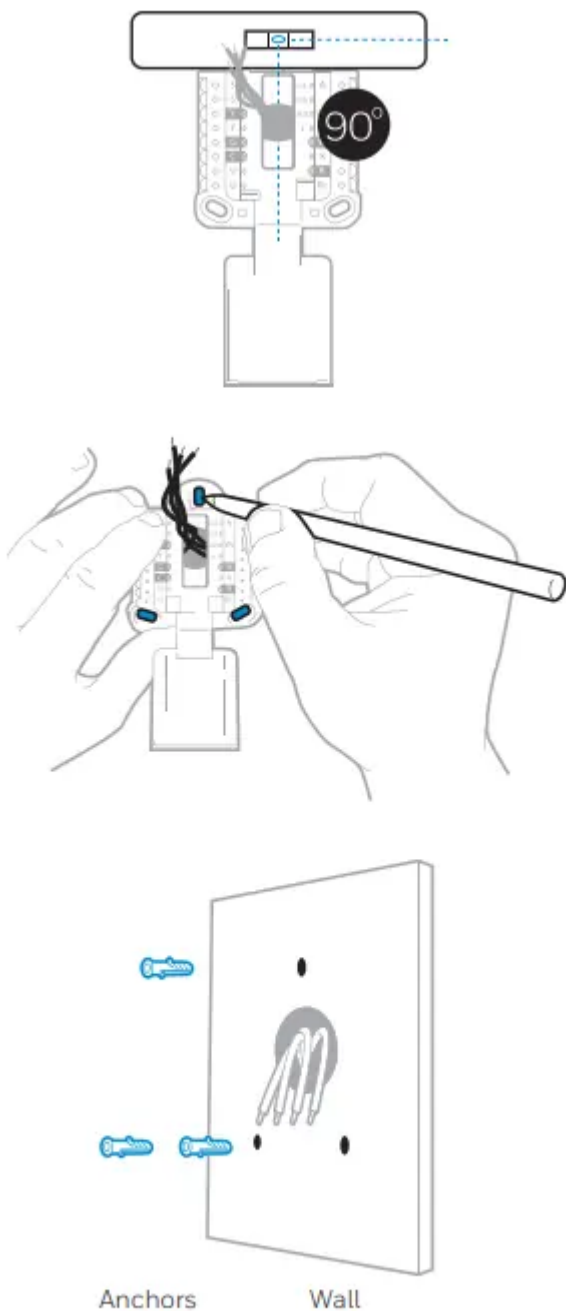
### 19. Insert recommended wall anchors

It is recommended that you use the wall anchors included in the box to mount your thermostat.

You can use the wall plate to mark where you want to place the wall anchors

1. Level the wall plate
2. Mark the location of the wall anchors using a pencil
3. Remove the wall plate
4. Drill the holes using a 7/32" drill bit
5. Insert the wall anchors
6. Make sure the anchors are flush with the wall

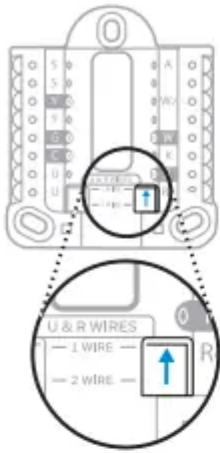
## 7. Reposition the wall plate on wall



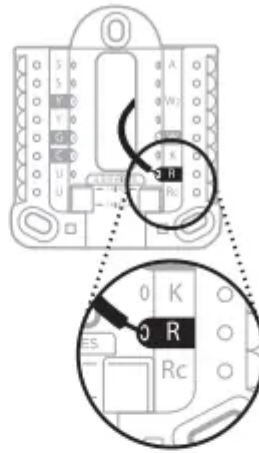
## 20. Determine Correct R-Switch Position and Insert R-wire or wire

Set the R-switch up or down based on your wiring notes in Step 8. Insert wires into the inner holes of the terminals on the wall plate. The tabs will stay down once the wire is inserted.

If you have 1 R-Wire (R, RC, RH):



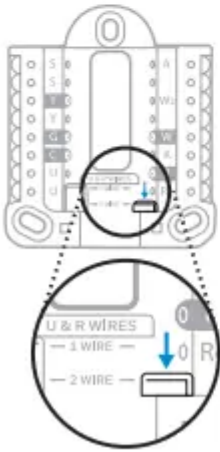
1. Ensure the right R-switch is in the **up position**.



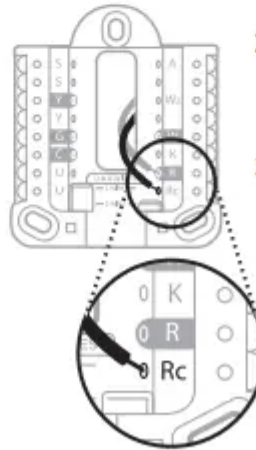
2. Insert your **R-wire (R, Rh or Rc) into R-terminal**.

OR

If you have **2 R-Wires (R, RC, RH)**:



1. Set right R-switch to the **down position**.



2. Insert your **Rc wire into Rc-terminal**.
3. Insert your **R or Rh wire into R-terminal**.

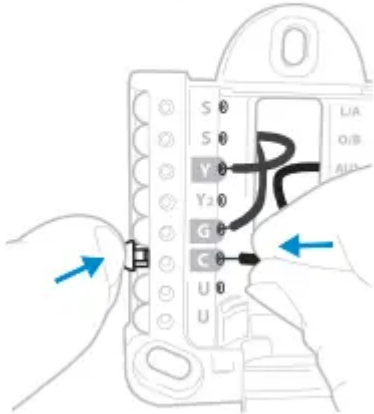
## 21. Connect remaining wires from Step 8

Push down on the tabs to put the wires into the inner holes of their corresponding terminals on the wall plate (one wire per terminal) until it is firmly in place.

Gently tug on the wires to verify they are secure.

**Tip:** If you need to release the wires again, push down the terminal tabs on the sides of the wall plate.

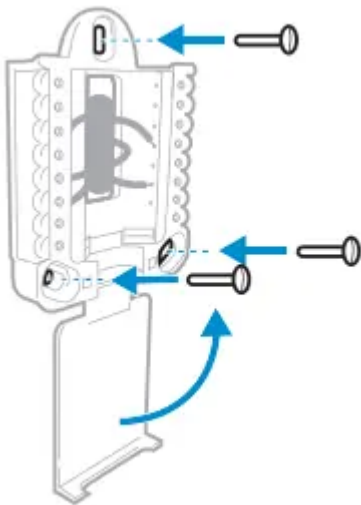
This wiring is just an example, actual wiring may vary.



22. Close the door and mount the wall plate

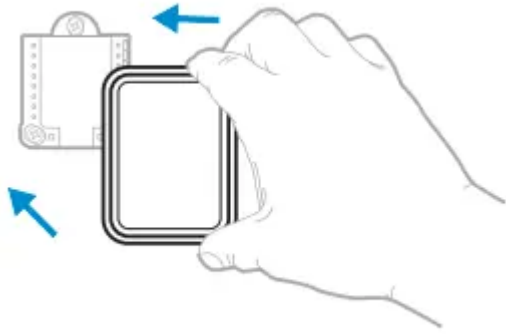
Mount the wall plate using the provided screws. Install all three screws for a secure fit on your wall

**Tip:** Prior to tightening the screws, use a level to ensure the wall plate is level.



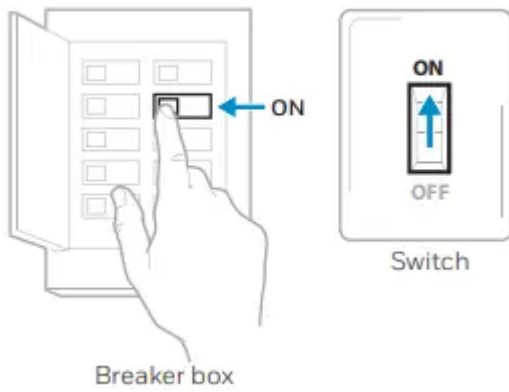
23. Attach your thermostat

Align the thermostat on the wall plate and firmly snap into place.



24. Turn power back on

Turn on the switch that controls your heating and cooling system.



25. Complete setup on the thermostat

Remove the protective film and confirm that your thermostat reads “Welcome.”

If you do not see this, visit [honeywellhome.com/support](http://honeywellhome.com/support) or call 1-855-733-5465 for more help.



# Getting the most from the T9 Wi-Fi Thermostat

## **Prioritize Rooms**

Prioritize a specific room or multiple rooms, or let comfort follow your move using built-in motion detection.

## **Control on the Go**

Adjust your thermostat from anywhere using your tablet or smartphone.

## **Save Energy**

With geofencing, you can save money on the most expensive part of your energy bill while you're away.

## **Simple Installation**

The thermostat automatically programs itself. Just answer a few simple questions and you'll be up and running in no time.

## **Whole-Home Range**

With up to a 200-foot\* range, 20 sensors with temperature, humidity, and occupancy detection can connect to your thermostat from throughout your home.

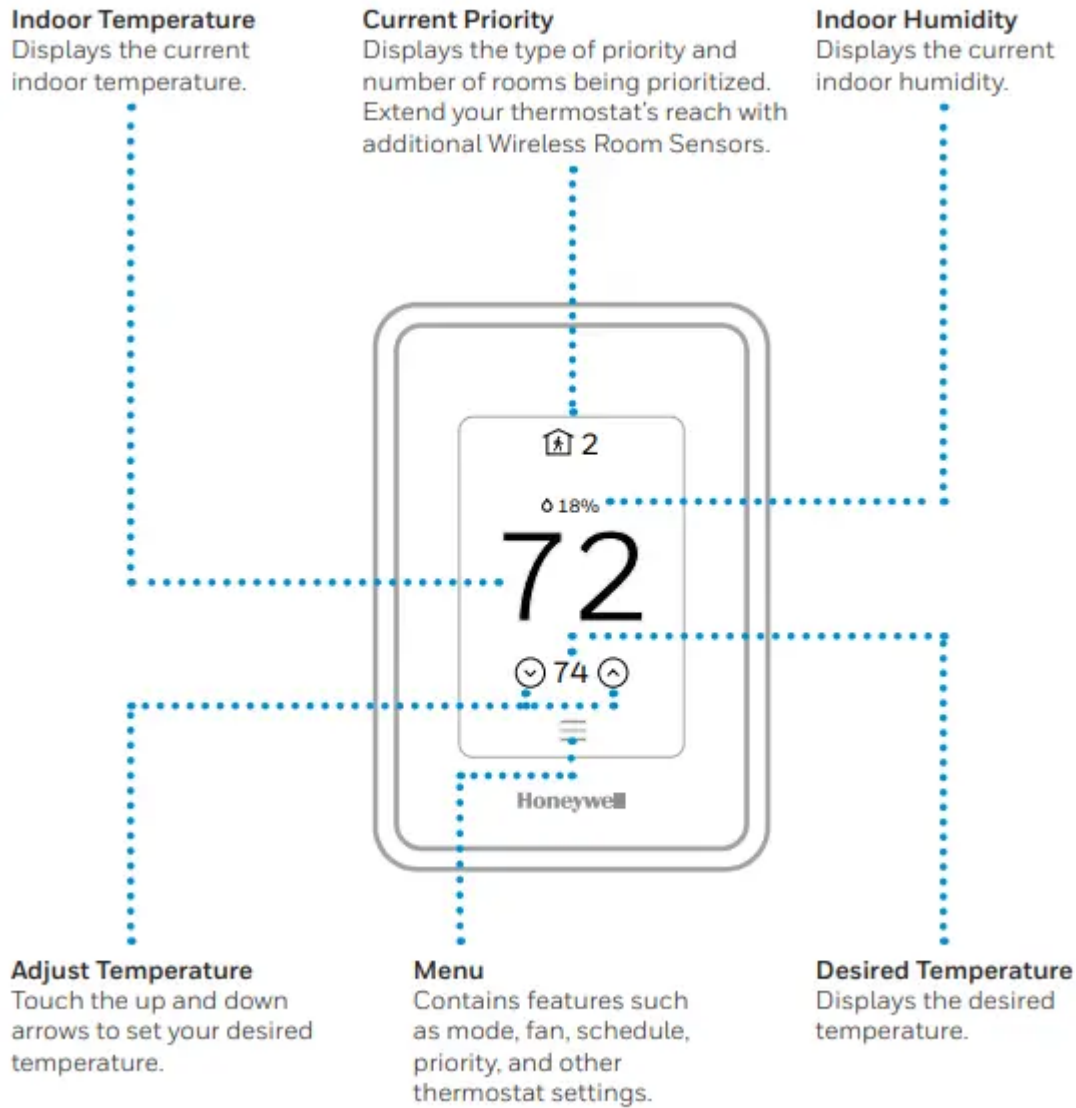
\*Range can vary based on home construction, wireless interference, and other factors.

## **Know Your Home Is Safe**

Get customizable alerts on your mobile device such as when the basement is so cold a pipe could burst, or if the baby's room is getting too hot.

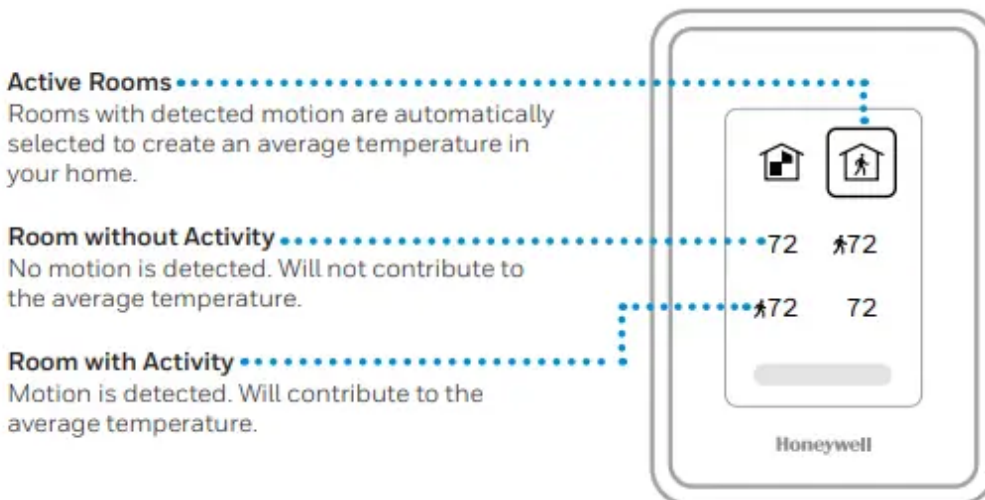
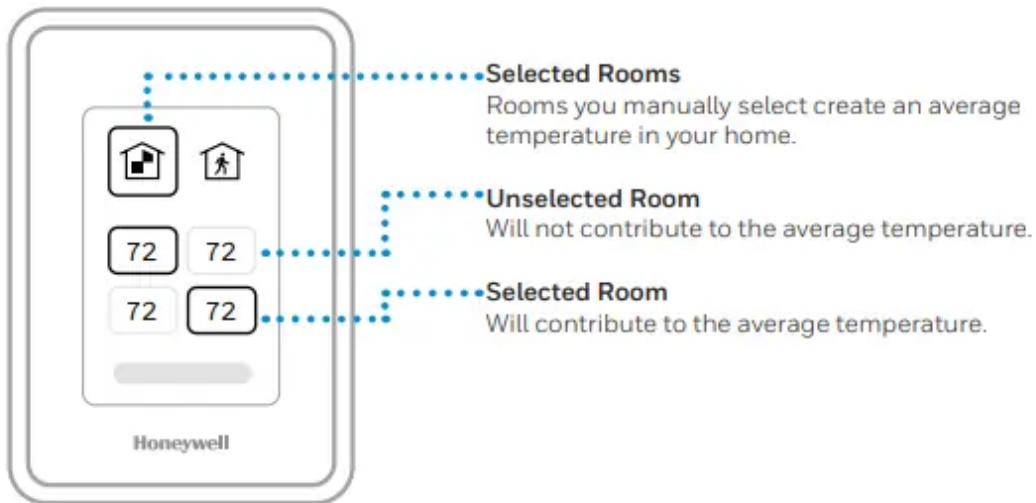
# Using your thermostat

The screen will wake up by pressing the center area of the displayed temperature.



## Using Priority

Priority creates an average temperature in your home based on specific rooms. This allows you to prioritize comfort where you want it.



## Troubleshooting

If you have difficulty with your thermostat, please try the following suggestions. Most problems can be corrected quickly and easily

- **Display is blank**

1. Check circuit breaker and reset if necessary.
2. Make sure power switch for heating & cooling system is on.
3. Make sure furnace door is closed securely.
4. Make sure the C wire is connected.

- **Heating or cooling system does not respond**

1. Press Menu > System Mode > Heat > Done to set the system to Heat mode. Make sure the desired temperature is higher than the indoor temperature.

2. Press Menu > System Mode > Cool > Done to set the system to Cool mode. Make sure the desired temperature is lower than the indoor temperature.
3. Check circuit breaker and reset if necessary.
4. Make sure power switch for heating & cooling system is on.
5. Make sure furnace door is closed securely.
6. Wait 5 minutes for the system to respond.

- **Temperature settings do not change : Make sure desired temperature is within acceptable ranges:**

1. Heat: 40 °F to 90 °F (4.5 °C to 32.0 °C)
2. Cool: 50 °F to 99 °F (10.0 °C to 37.0 °C)

- **Aux heat runs in cooling** : For heat pump systems, verify there is not a wire attached to W on the UWP.
- **Cool runs with a call for heat** : For heat pump systems, verify there is not a wire attached to W the UWP.
- **Sensor will not connect** : Press and hold Connect on the wireless sensor for 15 seconds. The LED will turn Amber. Return to the thermostat menu and press Menu > Devices and Sensors. Follow the onscreen instructions to add the sensor.

The product should not be disposed of with other household waste. Check for the nearest authorized collection centers or authorized recyclers. The correct disposal of end-of-life equipment will help prevent potential negative consequences for the environment and human health.

## 2-year limited warranty

Resideo warrants this product, excluding battery, to be free from defects in workmanship or materials, under normal use and service, for a period of two (2) years from the date of first purchase by the original purchaser. If at any time during the warranty period the product is determined to be defective due to workmanship or materials, Resideo shall repair or replace it (at Resideo's option)

If the product is defective, (i) return it, with a bill of sale or other dated proof of purchase, to the place from which you purchased it; or (ii) call Resideo Customer Care at 1-800-633-3991. Customer Care will make the determination whether the product should be returned to the following address: Resideo Return Goods, Dock 4 MN10-3860, 1885 Douglas Dr. N., Golden Valley, MN 55422, or whether a replacement product can be sent to you.

This warranty does not cover removal or reinstallation costs. This warranty shall not apply if it is shown by Resideo that the defect was caused by damage which occurred while the product was in the possession of a consumer.

Resideo's sole responsibility shall be to repair or replace the product within the terms stated above. RESIDEO SHALL NOT BE LIABLE FOR ANY LOSS OR DAMAGE OF ANY KIND, INCLUDING ANY INCIDENTAL OR CONSEQUENTIAL DAMAGES RESULTING, DIRECTLY OR INDIRECTLY, FROM ANY BREACH OF ANY WARRANTY, EXPRESS OR IMPLIED, OR ANY OTHER FAILURE OF THIS PRODUCT. Some states do not allow the exclusion or limitation of incidental or consequential damages, so this limitation may not apply to you

THIS WARRANTY IS THE ONLY EXPRESS WARRANTY RESIDEO MAKES ON THIS PRODUCT. THE DURATION OF ANY IMPLIED WARRANTIES, INCLUDING THE WARRANTIES OF MERCHANTABILITY AND FITNESS FOR A PARTICULAR PURPOSE, IS HEREBY LIMITED TO THE TWO YEAR DURATION OF THIS WARRANTY. Some states do not allow limitations on how long an implied warranty lasts, so the above limitation may not apply to you.

This warranty gives you specific legal rights, and you may have other rights which vary from state to state. If you have any questions concerning this warranty, please write Resideo Customer Care, 1985 Douglas Dr, Golden Valley, MN 55422 or call 1-800-633-3991

**Warning**

This content is compiled from multiple sources and is provided for reference purposes only. It may not be complete or fully applicable to all situations. If you are unable to resolve your issue, please contact the product manufacturer or an authorized service provider for official support.

