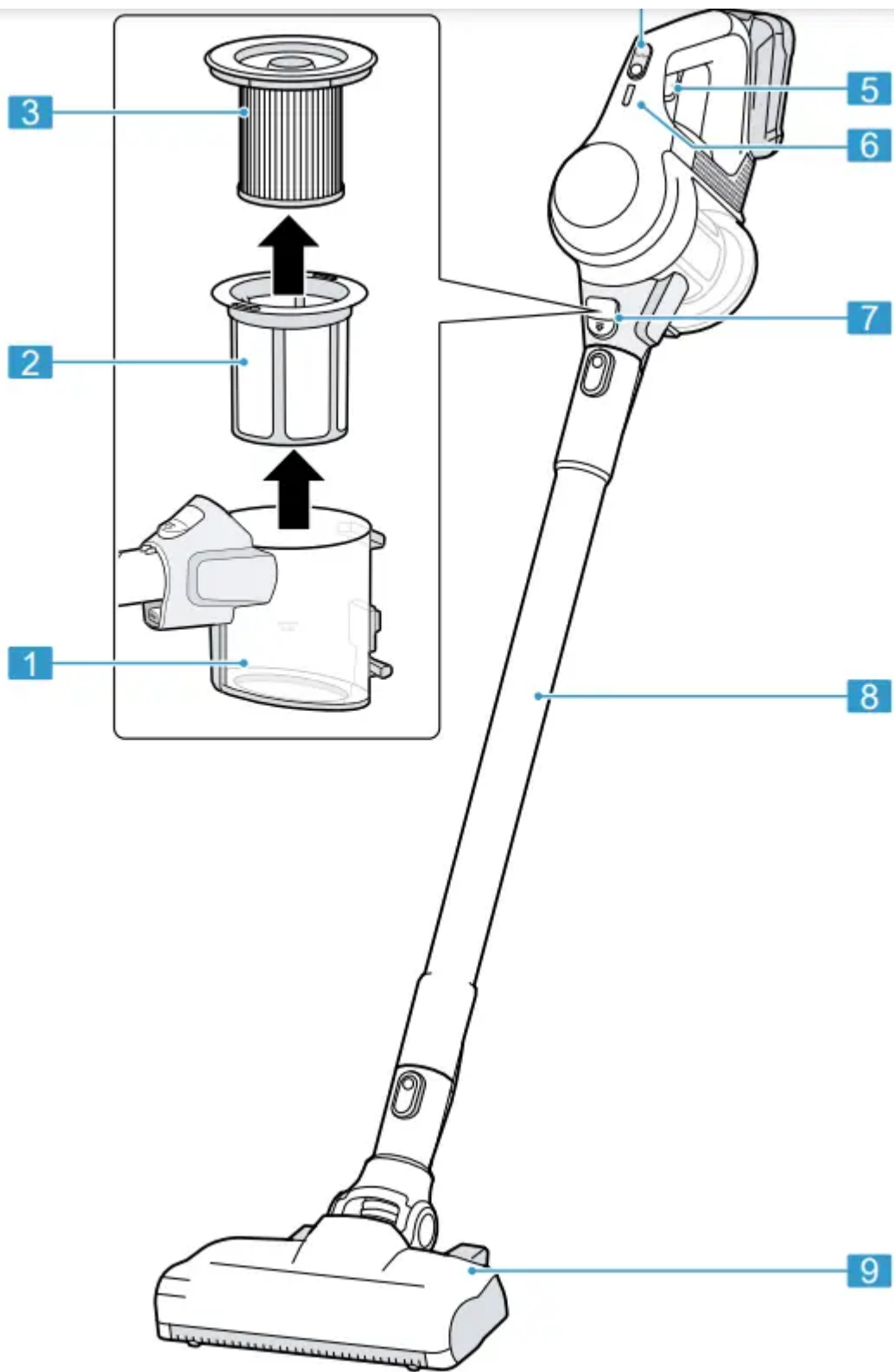


## **Familiarising yourself with your appliance**

Familiarise yourself with the parts of your appliance.

### **Appliance**

You can find an overview of the parts of your appliance here. → Fig. 2



**2**

- 1. Dust container
- 2. Fluff filter
- 3. Cartridge filter
- 4. Turbo switch

5. On/off switch
6. Status display
7. Dust container release button
8. Suction pipe
9. Floor nozzle with power brush

## Controls

You can find an overview of the controls for your appliance here

## Status display

The status display indicates the different operating statuses.

Operating status	Status display
Normal mode	Display lights up white.
Turbo mode	LED slowly flashes white.
Battery charge below 20%	Display rapidly flashes red.
Battery empty	Display goes out.
Charging process	LED slowly flashes white.
Battery is fully charged	Display lights up white and goes out after approx. two minutes
Over-/under-temperature protection	Display lights up red and goes out after approx. 10 seconds.

## Before using for the first time

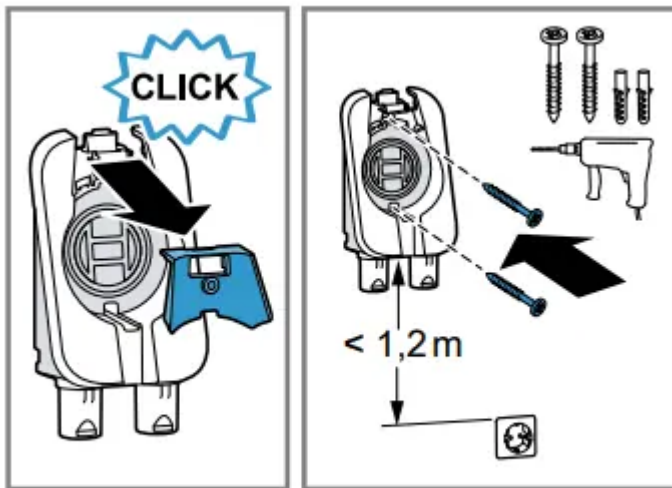
Prepare the appliance for use.

### Installing the base station

**WARNING:** Risk of electric shock! Incorrect installation is dangerous.

- Check whether any household wiring could be damaged in the installation area.
- Do not install the base station horizontally or vertically above, below or next to a socket.

1. Remove the front panel towards the front. → Fig. 3

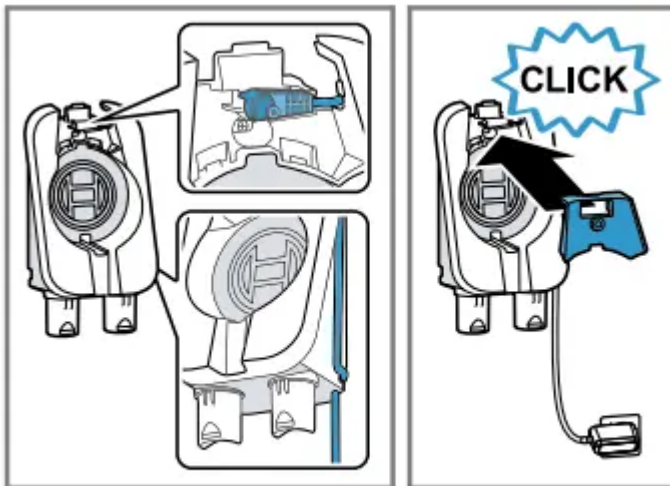


**3**

2. Wall-mount the base station . Install the base station close to a socket.

3. Insert the appliance plug for the charging cable<sup>1</sup> into the recess in the base station . →

Fig. 4



**4**

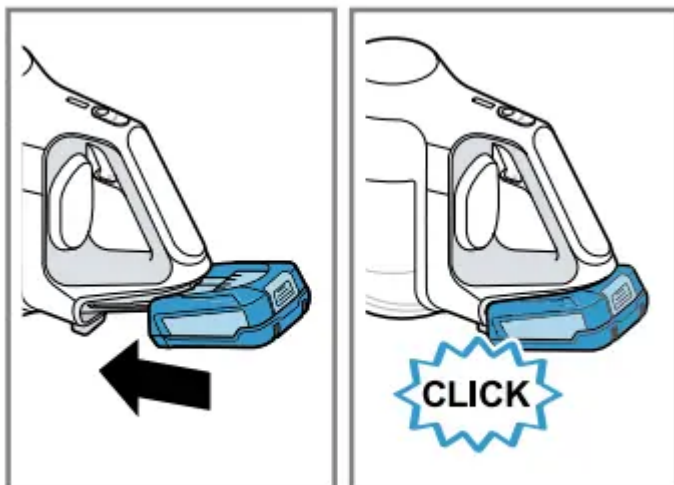
4. Guide the charging cable along the side of the base station<sup>1</sup> and secure it in the recess.

5. Insert the front panel. The front panel secures the appliance plug into the base station .

6. Plug the charging cable's mains plug<sup>1</sup> into the socket.

### Inserting and charging the battery

1. Use the guide rail to insert the battery into the vacuum cleaner. → Fig. 5



**5**

2. Fully charge the battery. → "Charging"

## Basic operation

You can find out everything you need to know about operating your appliance here.

### Charging

Depending on the appliance features, you can charge the battery in three different ways.

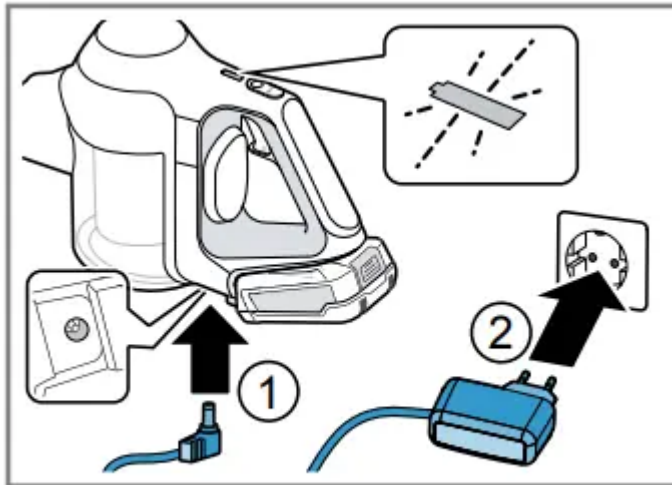
**WARNING:** Risk of fire! Improper use of the battery and the rapid charger is dangerous.

- Only charge the battery in chargers that are recommended by the manufacturer.
- Only use the battery in connection with the Bosch appliance.
- Charge the battery using the original charging cable 1 or the original quick charger .
- Only use batteries from the Power for ALL 18 V series.

#### *Charging using the charging cable1*

Note: The charging cable and the vacuum cleaner heat up while charging. This is normal and harmless. Requirement: The battery has been inserted. → "Inserting and charging the battery"

1. Place the vacuum cleaner close to the socket.
2. Plug the appliance plug into the vacuum cleaner. → Fig. 6



**6**

3. Insert the mains plug into the socket.

- The status display slowly flashes white while the battery is charging. Once the battery is fully charged, the status display lights up white for a few minutes.

Tip: To check that the battery has charged fully, briefly disconnect the vacuum cleaner from the mains. The status display then lights up white. You can charge the vacuum cleaner whenever it is not in use.

#### *Battery charging times*

You can find an overview of the battery charging times here.

#### *Charging in the base station*

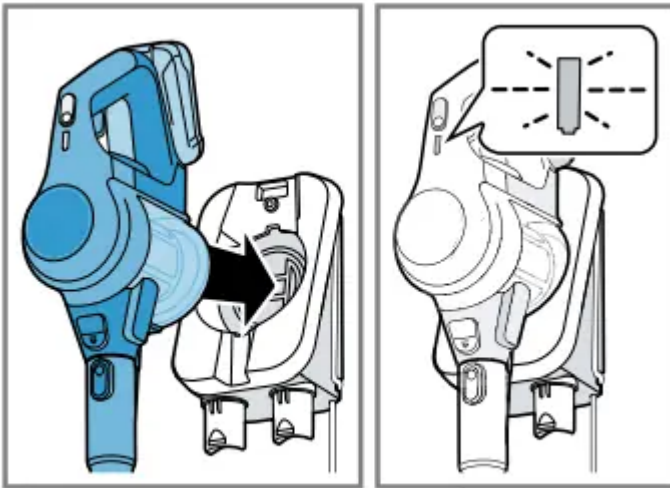
**WARNING:** Risk of injury! An appliance that falls may endanger people.

- Ensure that children do not play with the appliance, even when it is in the base station.

Note: The charging cable and the vacuum cleaner heat up while charging. This is normal and harmless.

Requirement: The battery has been inserted.

- Insert the vacuum cleaner into the base station from the front. → Fig. 7



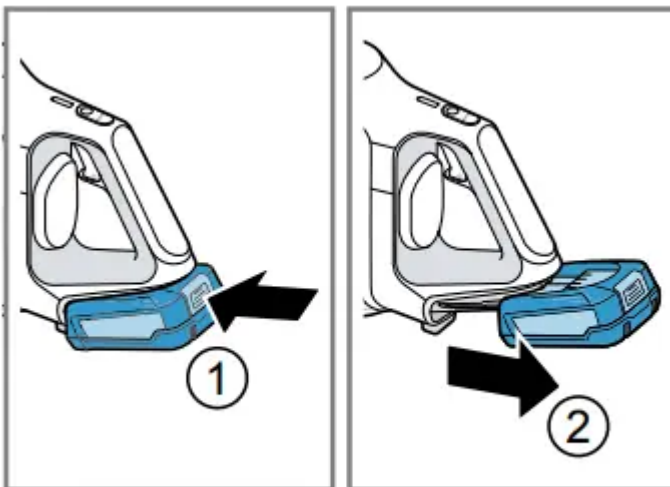
**7**

- The status display flashes white while the battery is charging. Once the battery is fully charged, the status display lights up white for a few minutes.

Tip: To check that the battery has charged fully, briefly disconnect the vacuum cleaner from the mains. Once the status display lights up white, the appliance is fully charged.

Charging using the quick charger

1. Press the release button and remove the battery to the rear. → Fig. 8



**8**

2. Observe the enclosed instructions.

Notes

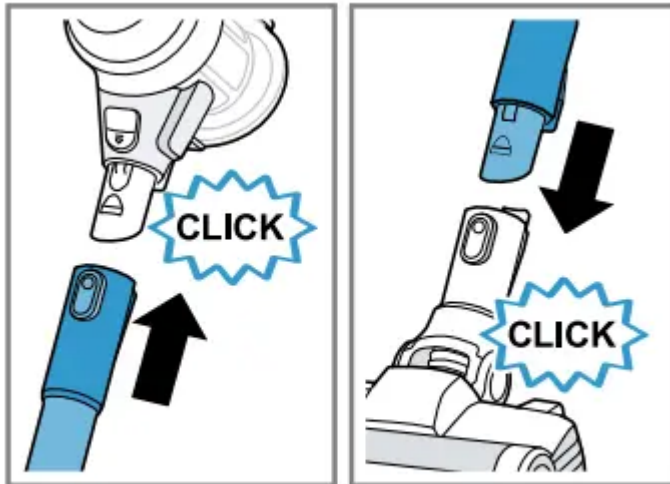
- The specified charging times may vary depending on the battery charging status, the battery temperature and the age of the battery.
- You can find out which battery charging times are achieved with the quick charger<sup>1</sup> in the instructions of for the quick charger

Tip: If the quick charger displays a battery charging status of approx. 80%, you can remove and use the battery.

Battery charging status of	18 V 2,5 Ah	18 V 3,0 Ah
80% in hrs	3,5	4
97%-100% in hrs	4	5

### Installing the appliance

1. Place the suction pipe onto the appliance's connection port and lock it in place. → Fig. 9

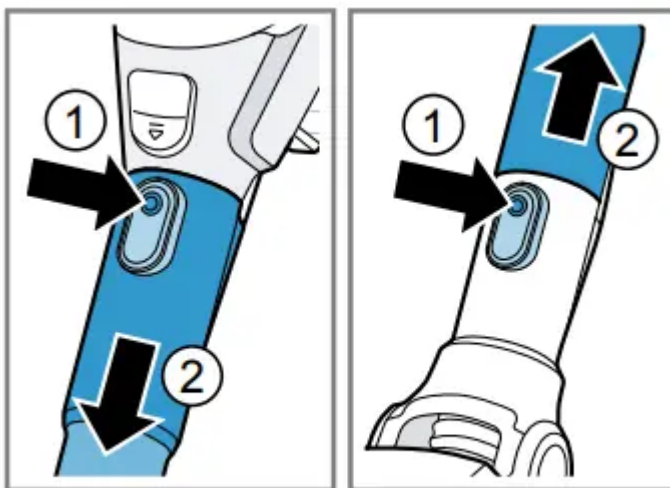


**9**

2. Insert the end of the suction pipe into the floor nozzle and lock it in place.

### Dismantling the appliance

1. Press the release button and pull the suction pipe out of the floor nozzle. → Fig. 10

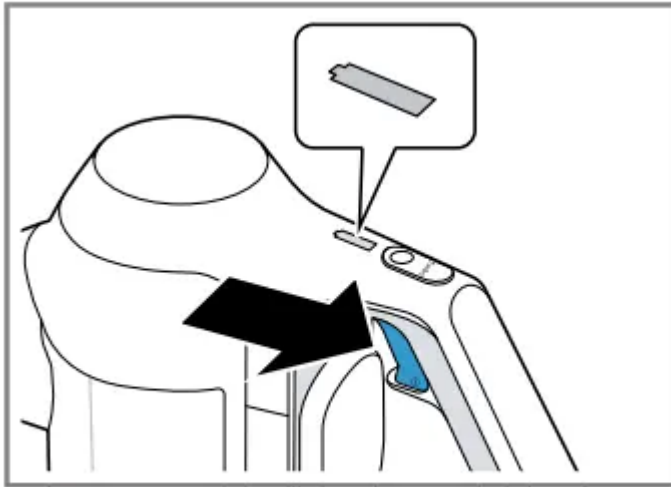


**10**

2. Press the release button and pull the suction pipe out of the appliance's connection port.

## Switching on the appliance


- Press  . → Fig. 11



**11**

- The status display lights up white.

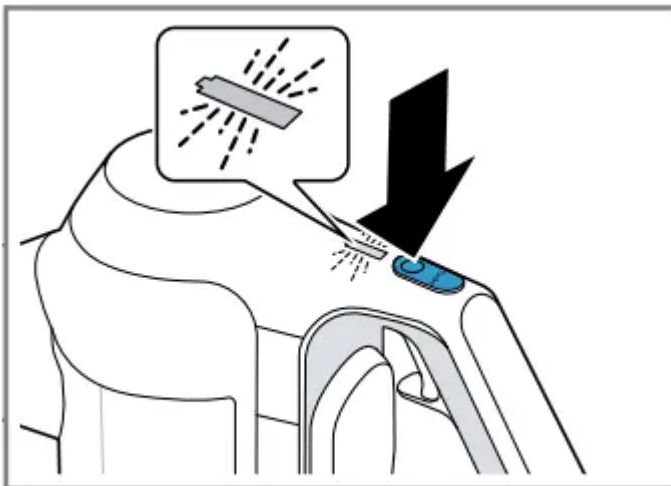
## Switching off the appliance

- Press  .
  - The status display goes out.

## Using turbo mode

Requirement: The appliance has been switched on. → "Switching on the appliance"

- Press **Turbo**. → Fig. 12



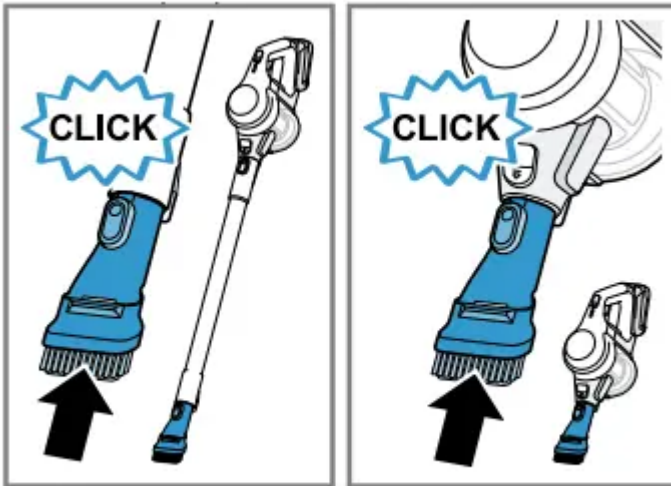
**12**

- The status display flashes white.

## Vacuuming with accessories

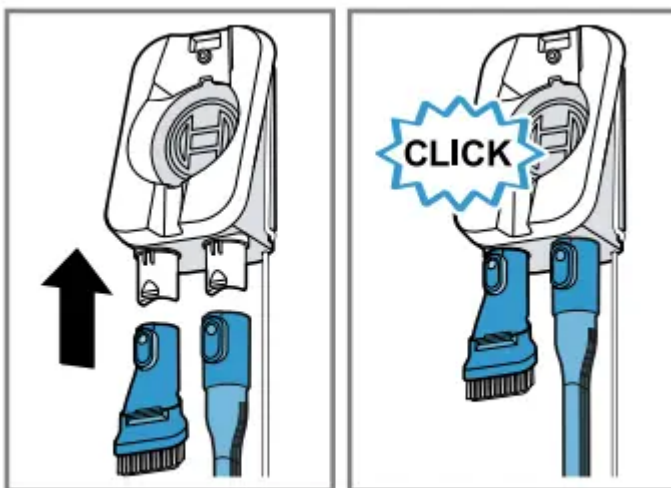
1. Place the required accessory onto the suction pipe or the appliance's connection port. →

Fig. 13



13

2. After use, insert the accessory into the base station . → Fig. 14



14

## Cleaning and servicing

To keep your appliance working efficiently for a long time, it is important to clean and maintain it carefully.

### Cleaning products

Only use suitable cleaning products.

**ATTENTION!** Using unsuitable cleaning products or incorrect cleaning may damage the appliance.

- Do not use harsh or abrasive detergents.
- Do not use cleaning products with a high alcohol content.

- Do not use hard scouring pads or cleaning sponges.
- Wash sponge cloths thoroughly before use.

### Cleaning the appliance

Requirement: The appliance is switched off. → "Switching off the appliance"

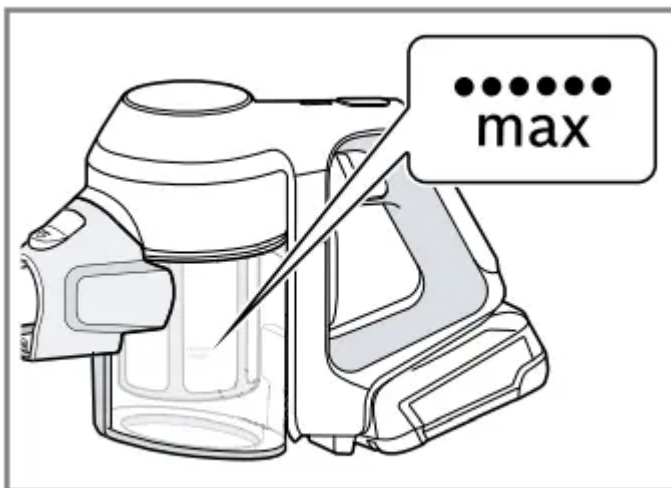
1. Disconnect the appliance from the charging cable .
2. Clean the appliance and the accessory with a soft cloth and a commercially available plastic cleaner.

### Emptying the dust container

Empty the dust container at the latest when the fill level has reached the **max** mark. In order to achieve the best possible vacuuming results, empty the dust container after every use of the vacuum cleaner.

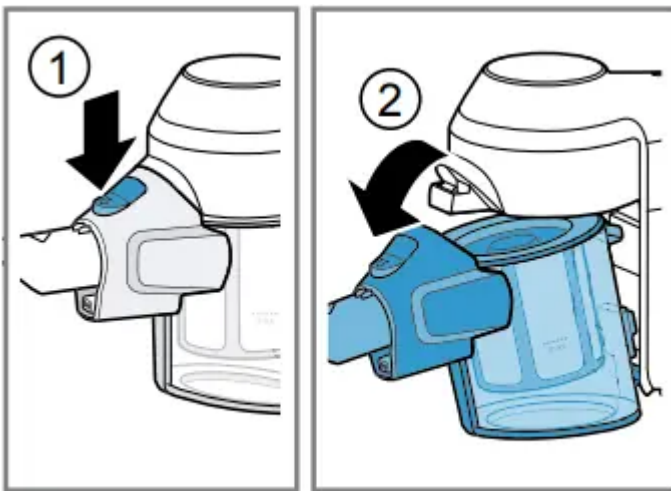
Requirement: The appliance is switched off. → "Switching off the appliance"

1. Check the fill level of the dust container. → Fig. 15



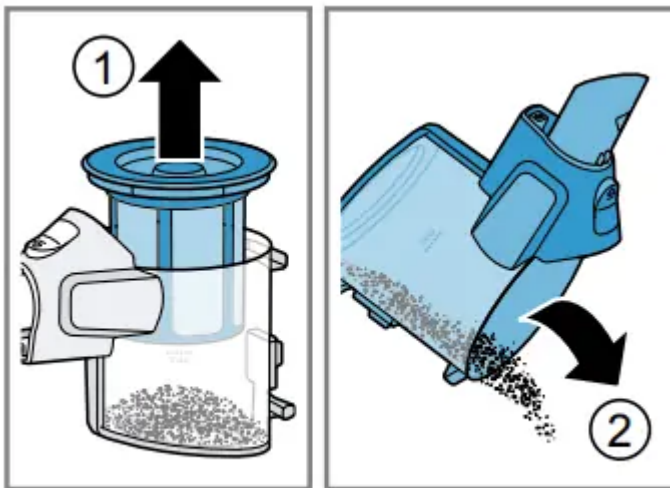
**15**

2. Check how dirty the filter unit is and clean it if necessary. → "Cleaning the filter unit"
3. To remove the dust container, press the release button. → Fig. 16



**16**

4. Remove the filter unit from the dust container. → Fig. 17

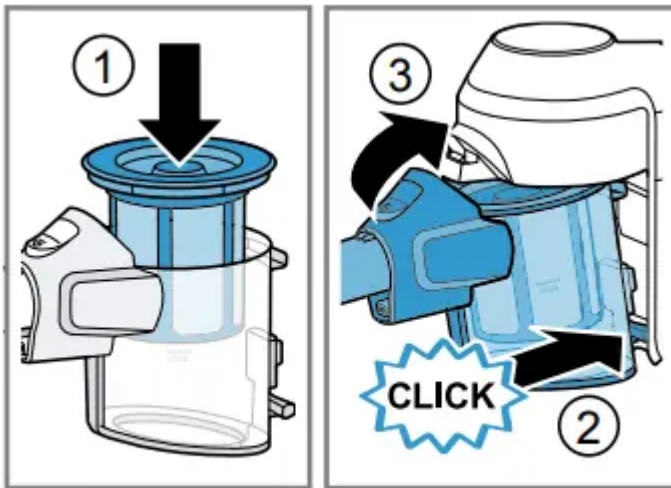


**17**

5. Empty the dust container.

6. If there is dirt underneath the ejection opening, remove the dirt.

7. Insert the filter unit into the dust container and check that it is seated correctly. → Fig. 18



**18**

8. Insert the dust container.

- The dust container audibly clicks into position

### Cleaning the filter unit

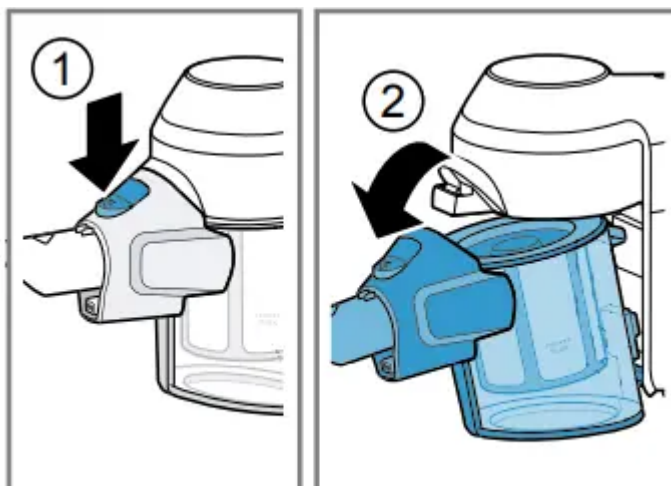
When you empty the dust container, also clean the filter. This gives you a good vacuuming result.

ATTENTION! Penetrating moisture may damage the filters.

- Never allow the filters to come into contact with liquids.

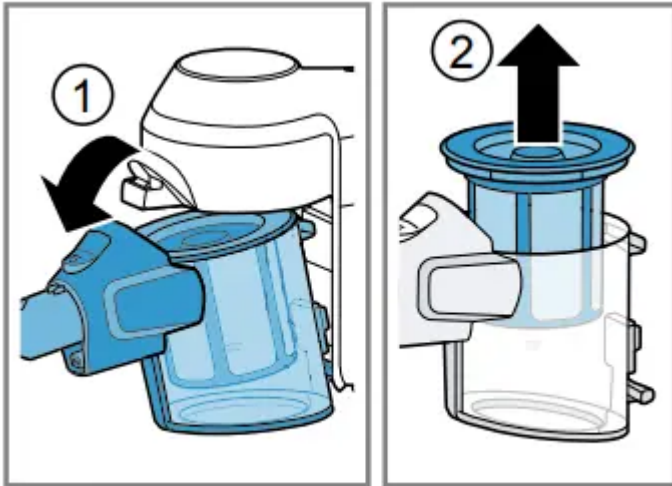
Requirement: The appliance is switched off. → "Switching off the appliance"

1. Remove the dust container. → Fig. 16



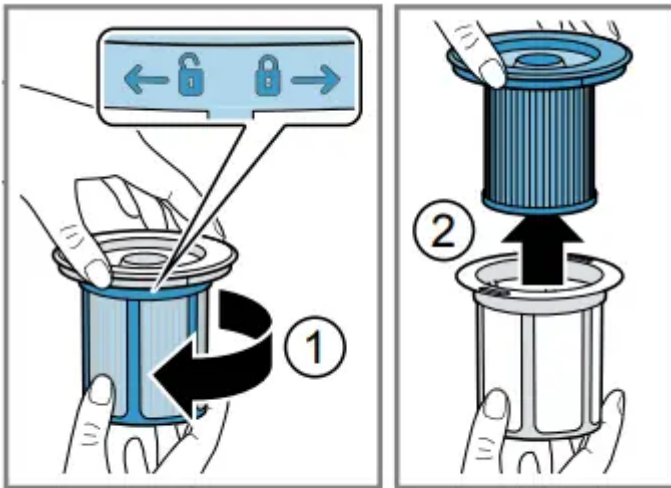
**16**

2. Remove the filter unit from the dust container. → Fig. 19



**19**

3. To unlock the cartridge filter, turn the filter unit in the direction. → Fig. 20



**20**

4. Remove the cartridge filter.

5. Tap out the cartridge filter over a bin. → Fig. 21



**21**

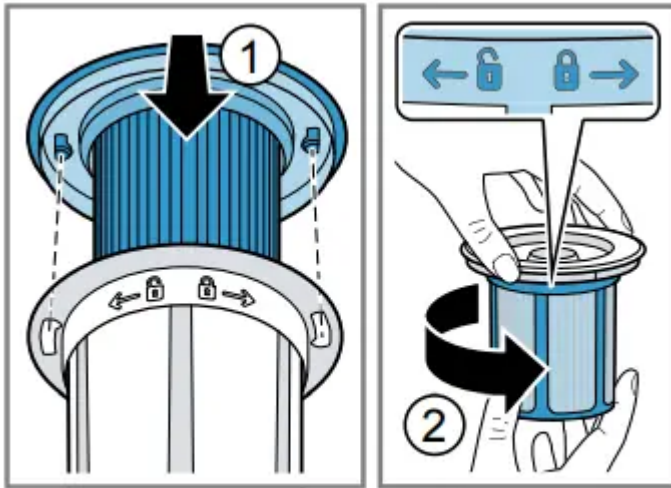
6. Lightly shake the fluff filter over a bin and lightly tap on it. → Fig. 22



**22**

7. Clean the fluff filter with a dry cloth.

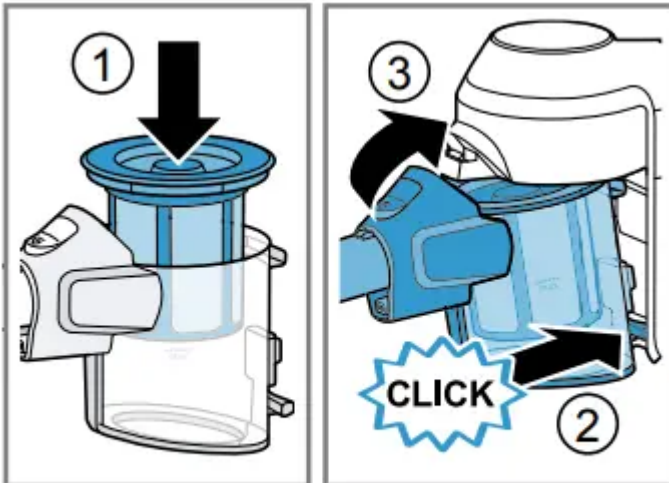
8. Insert the cartridge filter into the fluff filter. → Fig. 23



**23**

9. Lock the cartridge filter in the direction.

10. Insert the filter unit into the dust container. → Fig. 18



**18**

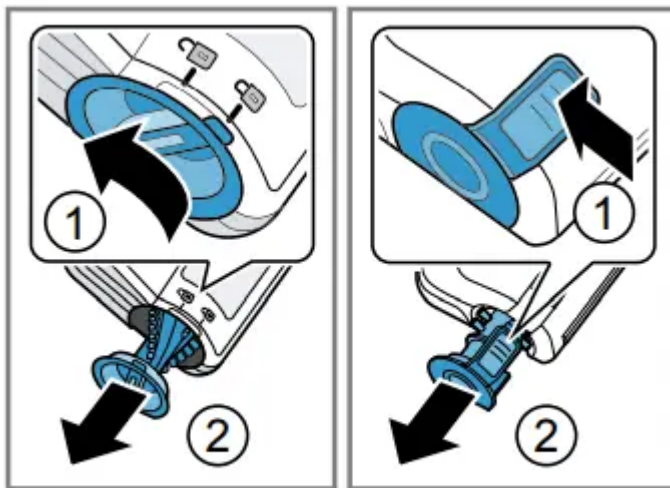
11. Insert the dust container.

- The dust container audibly clicks into position.

### Cleaning the nozzles

Requirement: The appliance is switched off. → "Switching off the appliance"

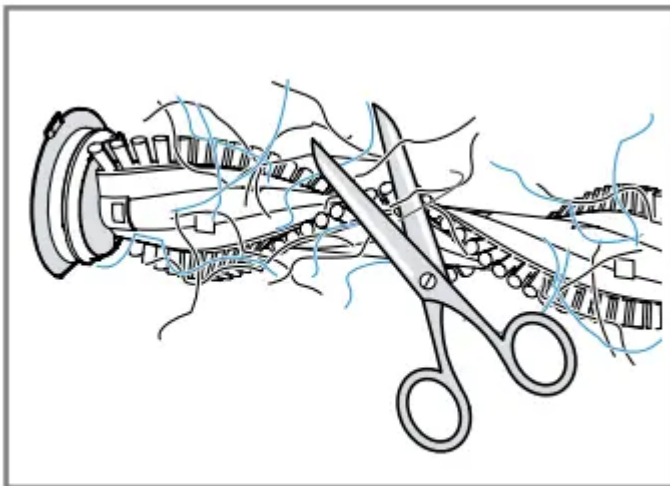
1. Disconnect the nozzle from the appliance.
2. Release the brush roller. → Fig. 24



**24**

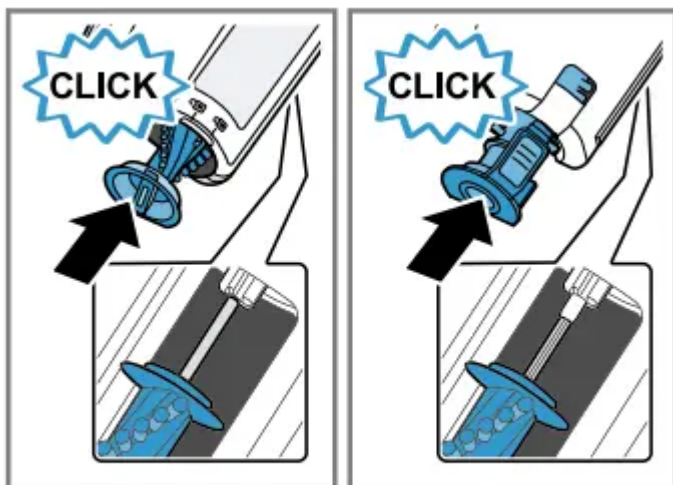
3. Remove the brush roller sideways from the nozzle.

4. Use scissors to cut through threads and hairs wound round the brush and then remove them. → Fig. 25



**25**

5. Insert the brush roller sideways along the guide bar and into the nozzle. → Fig. 26



**26**

6. Lock the brush roller.

## Troubleshooting

You can rectify minor faults on your appliance yourself. Read the troubleshooting information before contacting Customer Service. This will avoid unnecessary costs.

### Malfunctions

Errors	Cause	Troubleshooting
<p>The appliance is not working.</p> <p>The battery status display does not show any status.</p> <p>The red battery status display lights up for 10 seconds.</p>	The battery has not been inserted correctly.	▶ Insert the battery correctly. → "Inserting and charging the battery"
	The battery has not been charged.	▶ Charge the battery. → "Charging"
	The battery has overheated or overcooled.	<ol style="list-style-type: none"> <li>1. Switch off the appliance and disconnect the appliance from the power supply.</li> <li>2. Wait until battery has reached room temperature.</li> </ol>
	The appliance has overheated or overcooled.	<ol style="list-style-type: none"> <li>1. Switch off the appliance and disconnect the appliance from the power supply.</li> <li>2. Wait until the appliance has reached room temperature.</li> </ol>
The dust container cannot be inserted.	The filter unit is not complete.	▶ Check whether the filter unit is complete
	The filter unit or dust container is not positioned correctly.	▶ Check whether the filter unit and dust container are inserted correctly.
Suction is reduced.	The filter is blocked.	<ol style="list-style-type: none"> <li>1. Switch off the appliance and disconnect the appliance from the power supply.</li> <li>2. Clean the filter unit. → "Cleaning the filter unit"</li> </ol>
Suction is reduced.	The nozzle is blocked.	<ol style="list-style-type: none"> <li>1. Switch off the appliance and disconnect the appliance from the power supply.</li> <li>2. Check whether the air channel from the nozzle to the appliance is blocked.</li> <li>3. Empty the dust container. → "Emptying the dust container"</li> </ol>

Errors	Cause	Troubleshooting
		<p>4. Clean the filter unit. → "Cleaning the filter unit"</p> <p>5. Once the appliance has cooled down, switch the appliance back on.</p>

**Warning**

This content is compiled from multiple sources and is provided for reference purposes only. It may not be complete or fully applicable to all situations. If you are unable to resolve your issue, please contact the product manufacturer or an authorized service provider for official support.

