

Important safety instructions

- The electrical network is rated as dangerous. The only way to turn off the charger is to unplug the power at the outlet. You must therefore ensure that the electrical outlet is always easily accessible.
- Refer to the safety information before using the product.
- Hereby, MMD Hong Kong Holding Limited declares that this product is in compliance with the essential requirements and other relevant provisions of
- Directive RED 2014/53/EU.
- Use only the power supply type listed in the user instructions.
- Use only the battery type listed in the user instructions.
- Do not allow the product to come into contact with liquids.
- Risk of explosion if an incorrect battery type is inserted in the device.
- Dispose of used batteries according to the instructions.
- When the handset rings or when the handsfree is activated, keep the handset away from your ear to
- Head, trunk and limb SAR value avoid hearing damage.

Overview

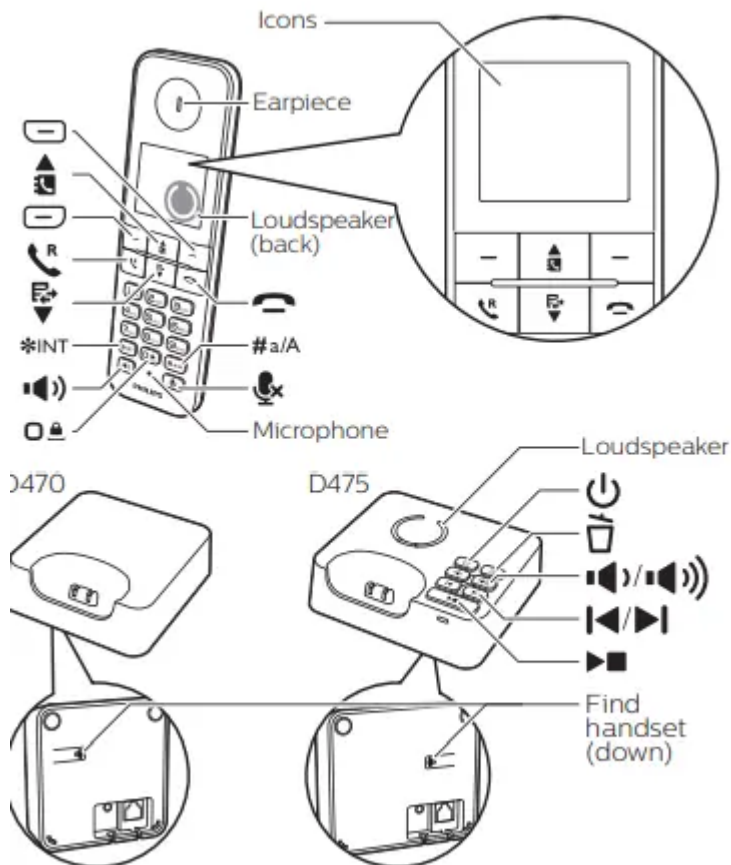
Icons

- It shows the connection status between the handset and base station. The more bars are shown, the better the signal strength is.
- This symbol remains steadily on when browsing blocked calls in the call log.
- This symbol remains steadily on when browsing outgoing calls in the redial list.
- This symbol flashes when there is a new missed call or when browsing new missed calls not read in the call log. This symbol remains steadily on when a call log exists and when browsing the missed calls in the call log.
- This symbol remains steadily on when browsing blocked calls in the call log.
- This symbol remains steadily on when browsing incoming calls in the call log.

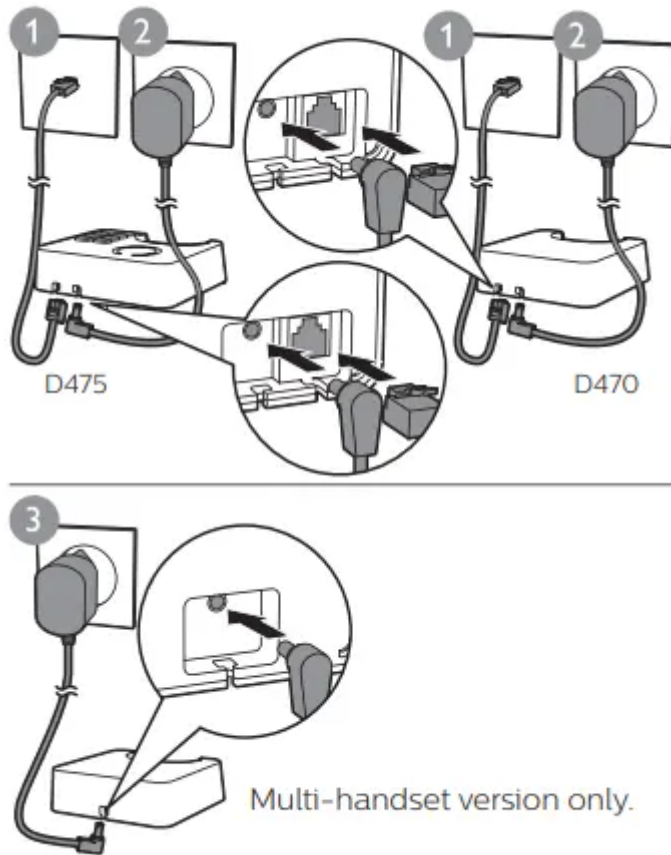
Activated alarm.

- The loudspeaker is on.
- The silent mode is set, but is outside of active period.
- The ringer is .

- The silent mode is set and within active period (the phone does not ring).
- For D475: Answering machine: this symbol ashes when there is a new message or when the memory is full. It is displayed when the answering machine is turned on.
- Voice message indicator: this symbol ashes when there is a new message, it remains steadily on when the voice messages are already viewed.
- This function is network dependent.
- This symbol is displayed when you scroll up/down a list or increase and decrease the volume.



Connection



Get started

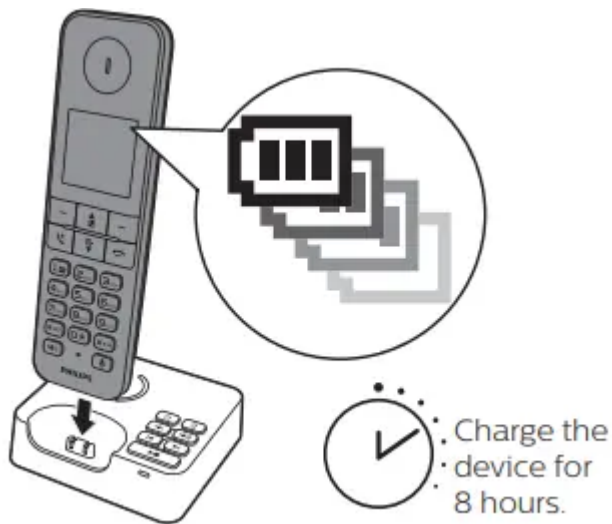
Phone setup

1 When using your phone for the first time, you see a welcome message (country dependent).

2 Set the country and language if prompted.

3 Set the date and time.

- If the time is in 12-hour format, press / keys to select [am] or [pm] (country dependent).
- Charge your phone



How to use

Phonebook

Add record

- Press [Menu].
- Select [Phonebook] > [Add new].
- Follow on-screen instructions.
- Call from the phonebook

Press .

- Select a record and press .
- Follow on-screen instructions.
- Direct access memory
- You have up to 2 direct access memories (keys 1 and 2). To dial the saved phone number automatically, press and hold on the keys in standby mode.
- Depending on your country, keys 1 and 2 are preset to the voice mail number and information service number of your service provider respectively (network dependent).

Call log

- Call from the call log
- Press .
- Select a record and press .
- View record
- Press > [Option] > [View].
- Save record

- Press > [Option] > [Save number].
- Follow on-screen instructions.
- Delete record
- Press > [Option] > [Delete].
- Follow on-screen instructions.

Redial

- Call from the redial list
- Press [Bis].
- Select a record and press .
- Save record
- Press [Bis] > [Option] > [Save number].
- Follow on-screen instructions.
- Delete record
- Press [Bis] > [Option] > [Delete].
- Follow on-screen instructions
- Register additional handsets
- You can register additional handsets to the base station.

Press [Menu].

- Select [Services] > [Register], then press [OK] to con rm.
- Press and hold on the base station for seconds.
- Enter the system PIN/Passcode (0000).
- Press [OK] to con rm PIN/Passcode.
- Registration is complete in less than minutes.
- Restore default settings
- You can reset your phone settings to the original factory settings.
- Press [Menu].
- Select [Services] > [Reset], then press [OK] to con rm.
- Follow on-screen instructions.

Technical specifications

1. Use the earphones with care, they can produce an excessive sound pressure, a headphone can cause hearing loss.

2. Replacing the battery by an incorrect type creates a risk of explosion. Dispose of used batteries according to the instructions.
3. The adapter shall be installed near the equipment and shall be easily accessible.
4. The device complies with RF specifications when it is used at a distance of 0 mm from your limbs.
5. To avoid the risk of hearing loss, do not listen at high volumes for long periods of time.

Frequently Asked Question

No signal bar is displayed on the screen

- The handset is out of range. Move it closer to the base station.
- If the handset displays [Regist. your handset], register your handset. (See the section on “Register additional handsets”).

If I fail to pair (register) the additional handsets to the base station, what do I do?

- Your base memory is full. Access > [Services] > [Unregister] to unregister the unused handsets and try again.

I have chosen a wrong language which I cannot read, what do I do?

- 1 Press to go back to the standby screen.
- 2 Press to access the main menu screen.
- 3 The following options will appear on the screen:
- 4 Select them to access the language options.
- 5 Select your own language.

My handset is in searching or unavailable status, what do I do?

- Make sure that the base station has power supply.
- Register the handset to the base station.
- Move the handset closer to the base station.

I cannot change the settings of my voice mail. What do I do?

- The voice mail service is managed by your service provider but not the phone itself. Co

No display

- Make sure the batteries are charged.
- Make sure there are power and phone connections.
- The handset on the charger does not charge.
- Make sure the batteries are inserted correctly.

- Make sure the handset is placed properly on the charger. The battery icon animates when charging.

Make sure the docking tone setting is turned on.

- When the handset is placed correctly on the charger, you can hear a docking tone.
- The charging contacts are dirty. Disconnect the power supply first and clean the contacts with a damp cloth.
- Batteries are defective. Purchase new ones with the same specifications.

Bad audio (crackles, echo, etc.)

- The handset is almost out of range. Move it closer to the base station.
- The phone receives interference from the nearby electrical appliances. Move the base station away.
- The walls are too thick. Move the base station away.

The handset does not ring.

- Make sure the handset ringtone is turned on.
- The caller ID does not display.
- The service is not activated. Check with your service provider.
- The caller's information is withheld or unavailable

Warning

This content is compiled from multiple sources and is provided for reference purposes only. It may not be complete or fully applicable to all situations. If you are unable to resolve your issue, please contact the product manufacturer or an authorized service provider for official support.