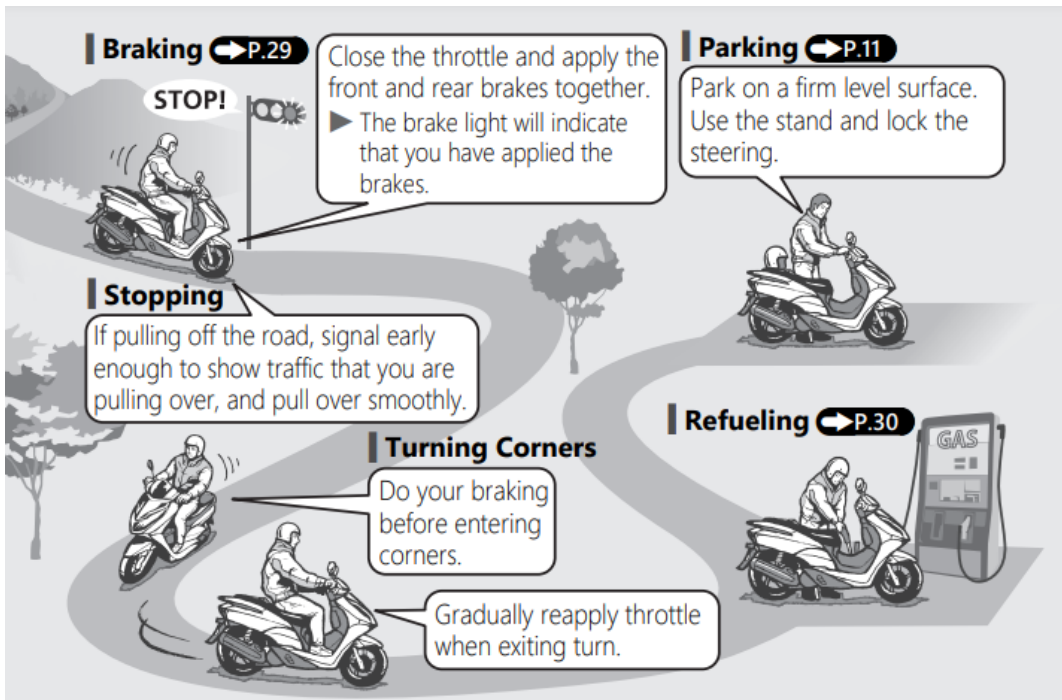
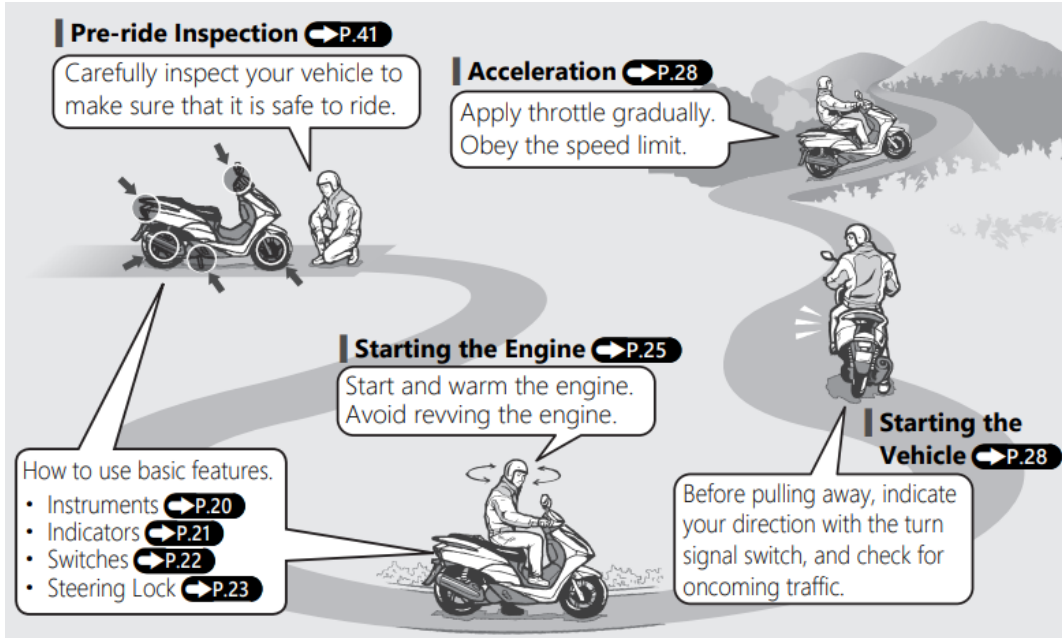
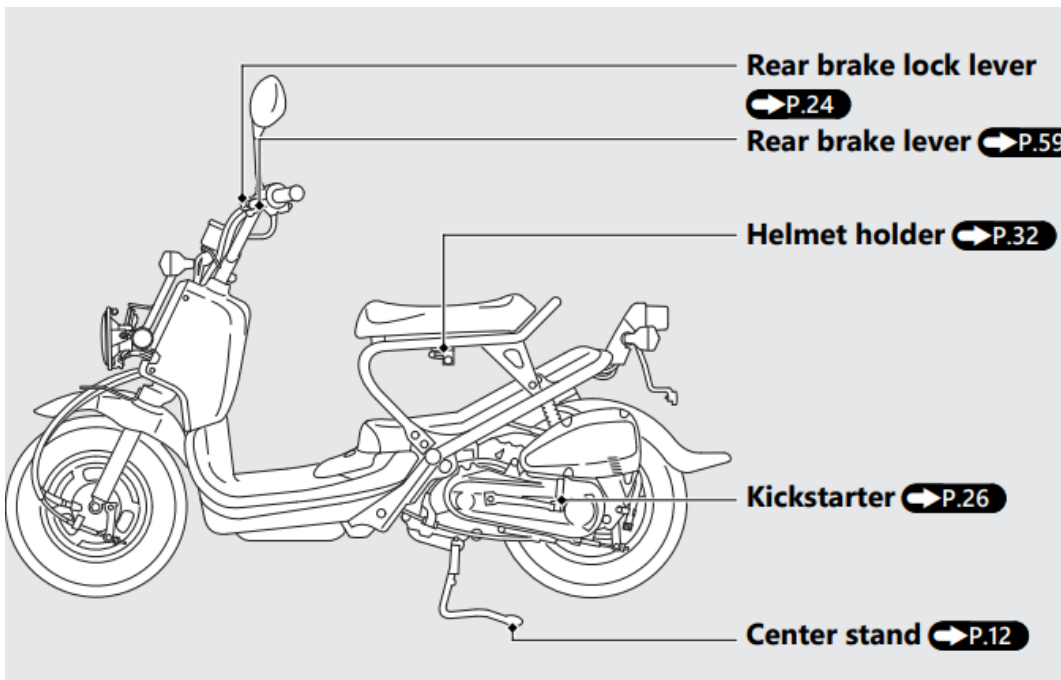
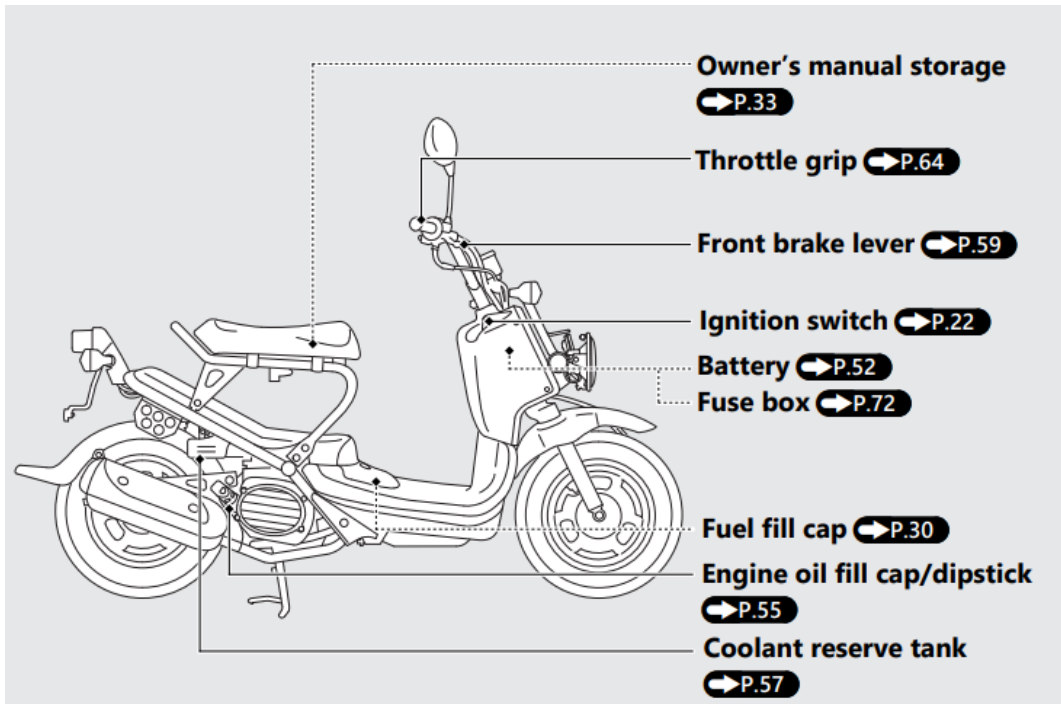


Operation Guide

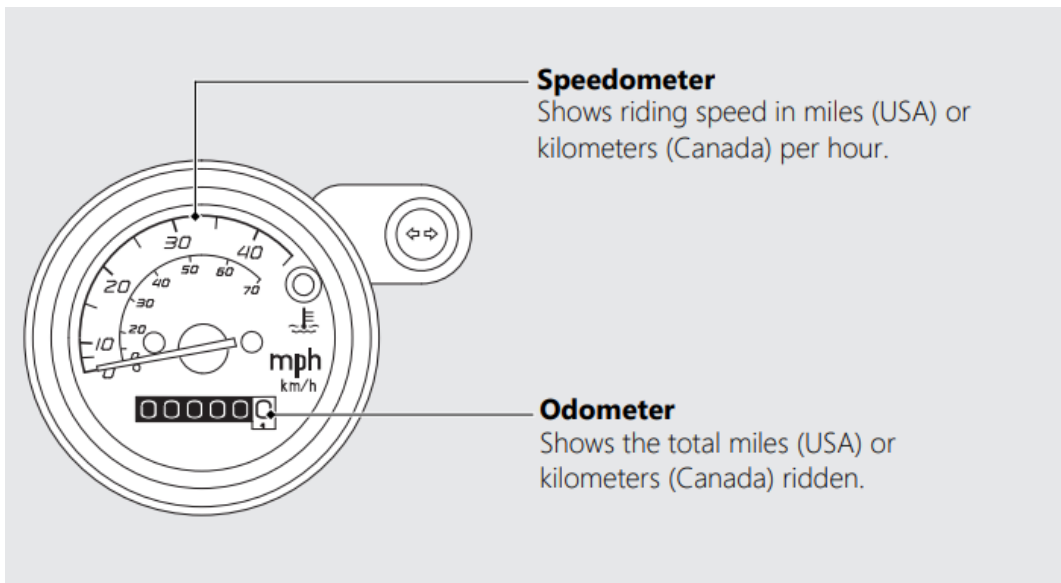
Basic Operation Flow



Parts Location

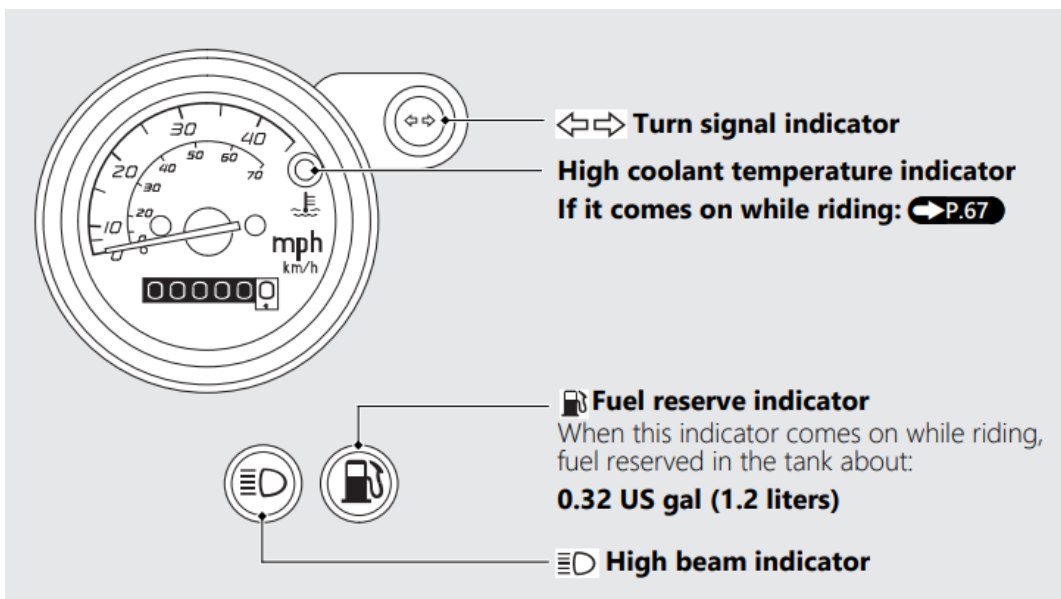


Instruments

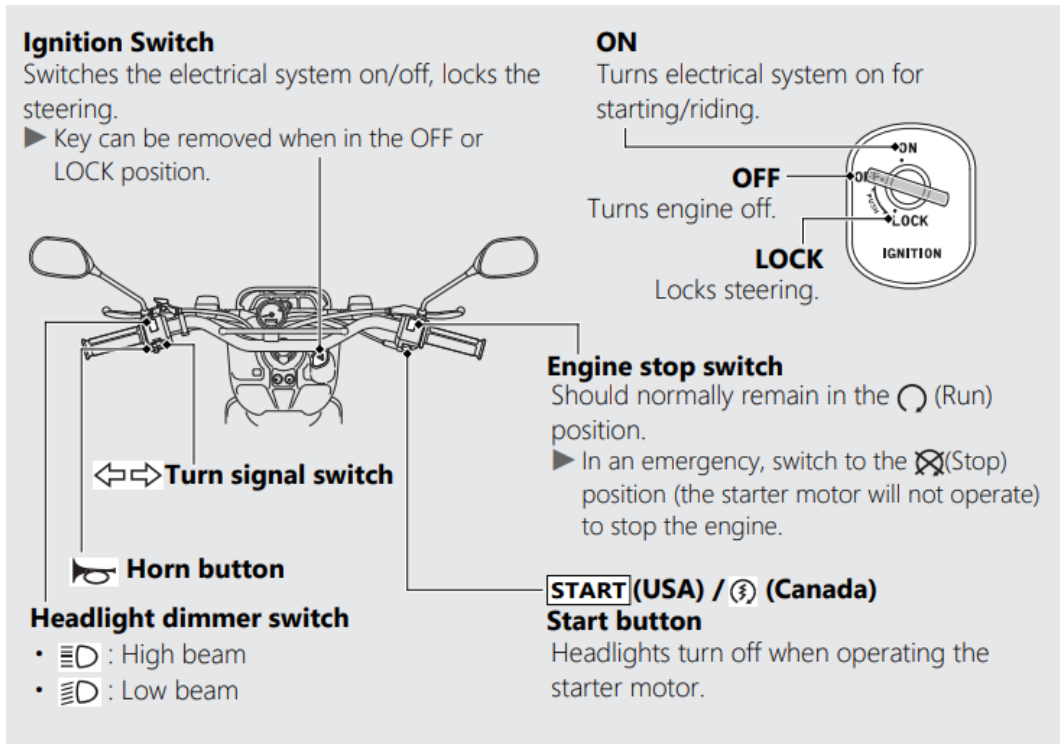


Indicators

If one of these indicators does not come on when it should, have your dealer check for problems.

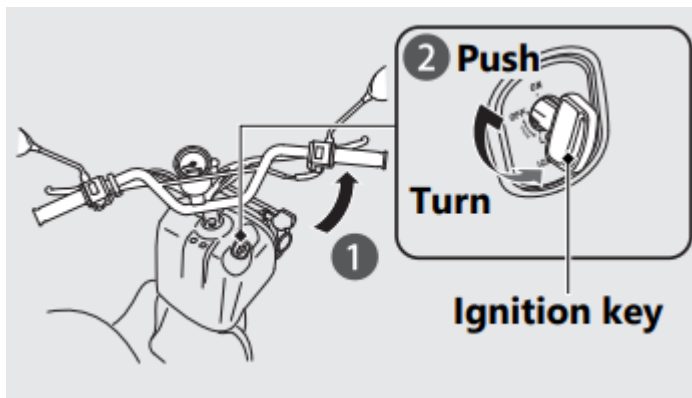


Switches



Steering Lock

- Lock the steering when parking to help prevent theft.
- A U-shaped wheel lock or similar device is also recommended.



Locking

1. Turn the handlebar all the way to the left.
2. Push the key down, and turn the ignition switch to the LOCK position.
 - Jiggle the handlebar if the lock is difficult to engage.
3. Remove the key.

Unlocking

- Insert the key, push it in, and turn the ignition switch to the OFF position.

Rear Brake Lock

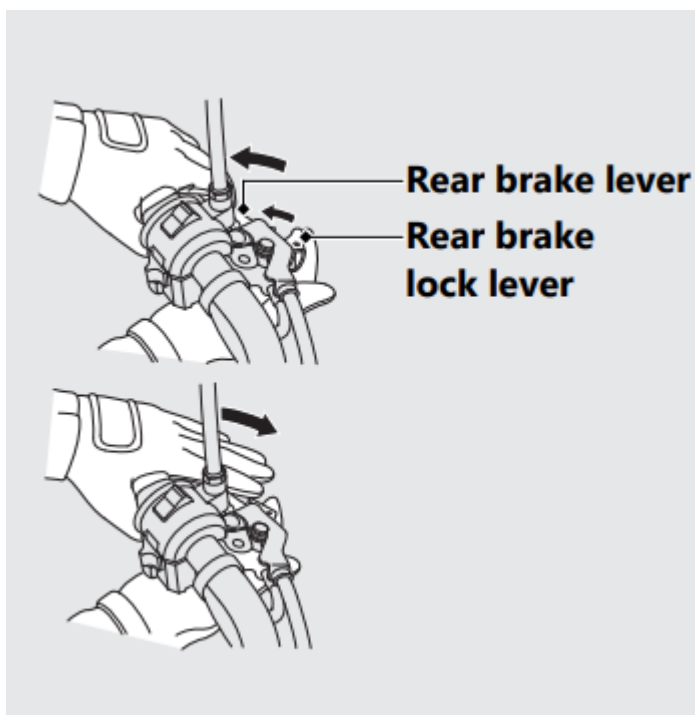
Be sure the rear brake lock is applied while starting and warming up the engine.

Locking

- Squeeze the rear brake lever and set the rear brake lock lever.
 - The rear brake lock will not function if the rear brake is not adjusted properly.

Unlocking

- Squeeze the rear brake lever.
 - Before riding, make sure that the rear brake lock is fully released so there is no drag on the rear wheel.




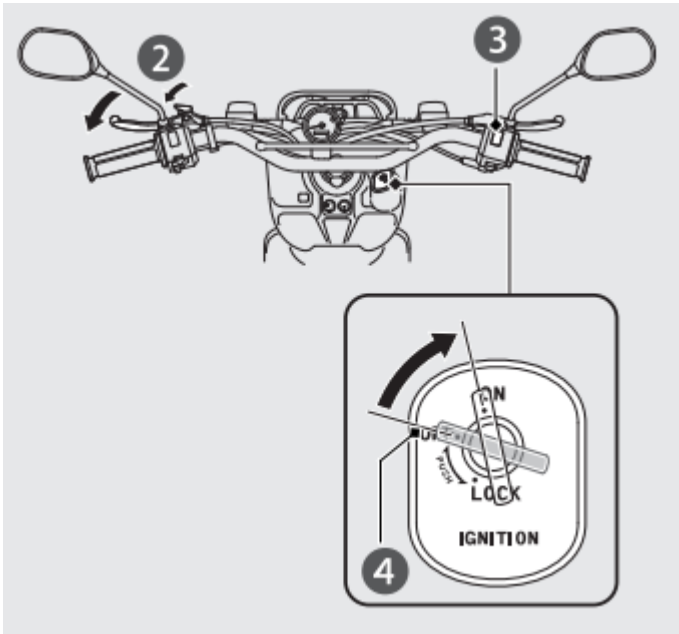
Starting the Engine

Start your engine using the following procedure, regardless of whether the engine is cold or warm.

NOTICE

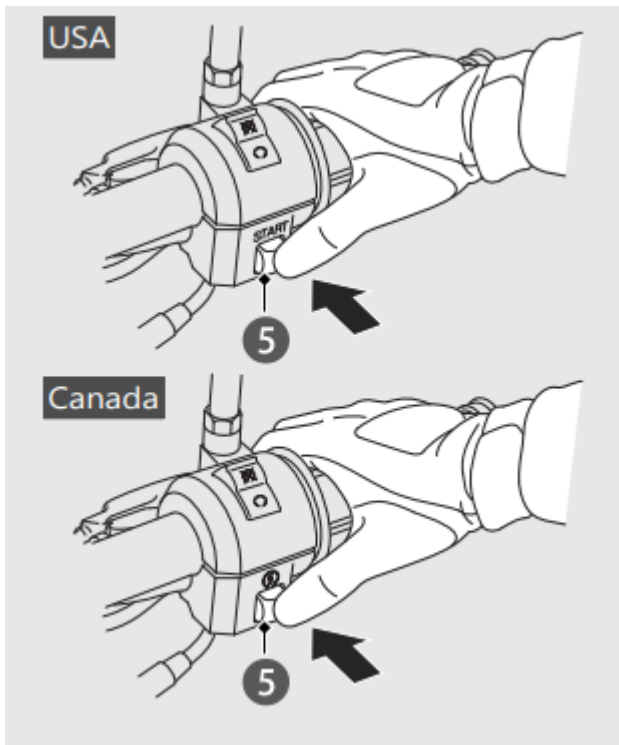
- (Using the start button) If the engine does not start within 5 seconds, turn the ignition switch to the OFF position and wait 10 seconds before trying to start the engine again to recover battery voltage.
- Extended fast idling and revving the engine can damage the engine, and the exhaust system.
- Do not operate the kickstarter while the engine is running as engine damage could result. Do not apply excessive force on the kickstarter.

- Fold up the kickstarter after the kickstarter is returned to the pedal stop.
1. Place the vehicle on its center stand.
 2. Lock the rear brake.
 - The starter motor will only work when the brake lever is pulled in.
 3. Make sure the engine stop switch is in the  (Run) position.
 4. Turn the ignition switch to the ON position



To Start the Engine with Electric Starter

5. Press the start button with the throttle completely closed. Release the start button as soon as the engine starts.



To Start the Engine with Kickstarter

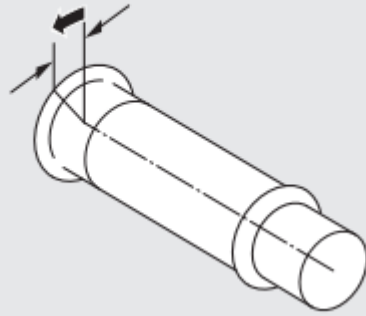
With the throttle closed, operate the kickstarter with a rapid, continuous motion.

- Allowing the kickstarter to snap back freely against the pedal stop can damage the engine case.
- Raise the kickstarter pedal after the kickstarter lever is returned to the stop.



If the engine does not start: Open the throttle slightly (about 1/8 in (3 mm), without freeplay) while starting the engine.

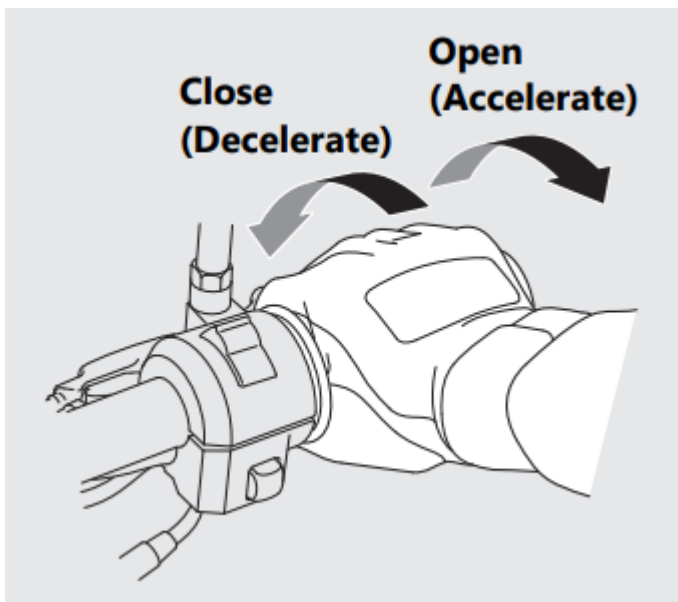
About 1/8 in (3 mm), without freeplay



Riding

Starting the Vehicle

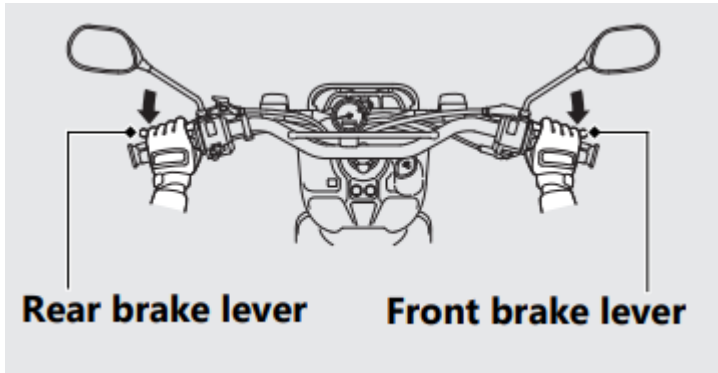
1. Push the vehicle forward off the center stand.
 - Lock the rear brake lock.
 - Keep throttle closed.
2. Get on the vehicle.
 - Mount the vehicle from the left side, keeping at least one foot on the ground.
3. Release the rear brake lock.
 - To prevent unexpected movement, squeeze brake levers.
4. Acceleration and deceleration To accelerate: Open the throttle slowly. Operation Guide
To decelerate: Close the throttle.



Braking

- Close the throttle and apply the front and rear brake levers together.

- Do not apply the brake lock while riding. It may cause the wheel to lock, reducing control of the vehicle.

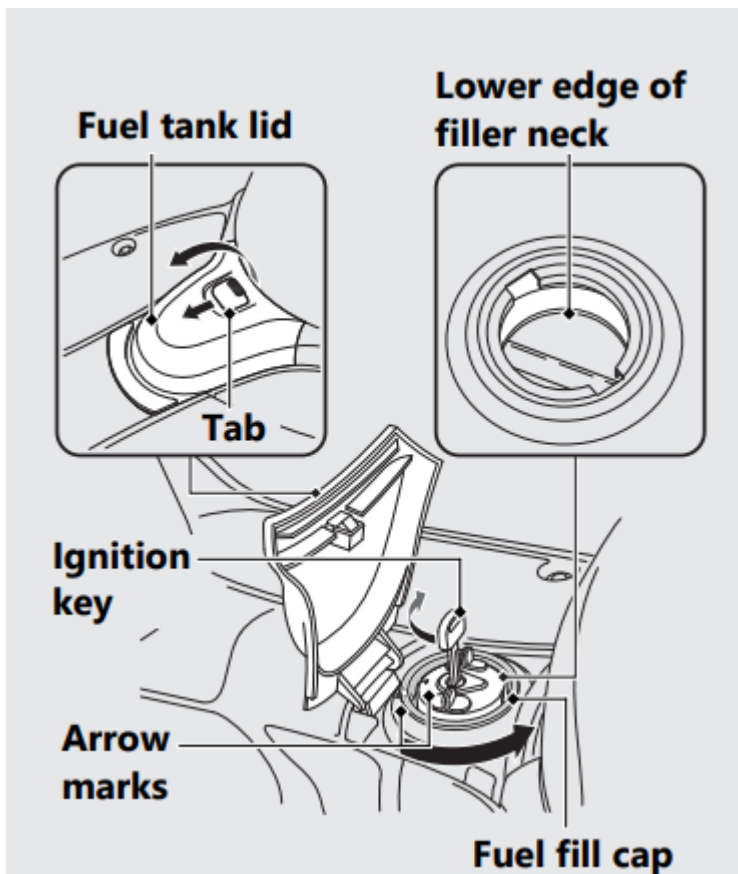


Refueling

- Fuel type: Unleaded gasoline only
- Recommended fuel octane number: Pump Octane Number (PON) 86 or higher.
- Tank capacity: 1.32 US gal (5.0 L)

Opening the Fuel Fill Cap

1. Pull the tab and open the fuel tank lid.
2. Insert the ignition key in the fuel fill cap and turn it clockwise until it stops.
3. Turn the fuel fill cap counterclockwise until it stops and remove the cap.



Do not fill with fuel above the lower edge of the filler neck.

Closing the Fuel Fill Cap

1. Install and tighten the fuel fill cap by turning it clockwise.
 - Make sure that the arrow marks on the cap and fuel tank are aligned.
2. Turn the key counterclockwise until it stops and remove the key.
3. Close the fuel tank lid.

WARNING: Gasoline is highly flammable and explosive. You can be burned or seriously injured when handling fuel.

- Stop the engine, and keep heat, sparks, and flame away.
- Handle fuel only outdoors.
- Wipe up spills immediately

Maintenance

Importance of Maintenance

Importance of Maintenance

- Keeping your vehicle well-maintained is absolutely essential to your safety and to protect your investment, obtain maximum performance, avoid breakdowns, and reduce air pollution. Maintenance is the owner's responsibility. Be sure to inspect your vehicle before each ride, and perform the periodic checks specified in the Maintenance Schedule
- **WARNING:** Improperly maintaining your vehicle or failing to correct a problem before you ride can cause a crash in which you can be seriously hurt or killed. Always follow the inspection and maintenance recommendations and schedules in this owner's manual.
- For information about the exhaust emission and noise emission requirements of the U.S. Environmental Protection Agency (EPA), and the Environment and Climate Change Canada (ECCC).
- **USA:** Maintenance, replacement or repair of the emission control devices and systems may be performed by any vehicle repair establishment or individual using parts that are "certified" to EPA standards.

Maintenance Safety

Always read the maintenance instructions before you begin each task, and make sure that you have the tools, parts, and skills required. We cannot warn you of every conceivable hazard that can arise in performing maintenance. Only you can decide whether or not you should perform a given task.

Follow these guidelines when performing maintenance.

- Stop the engine and remove the key.
- Place your vehicle on a firm, level surface using the center stand or a maintenance stand to provide support.
- Allow the engine, muffler, brakes, and other high-temperature parts to cool before servicing as you can get burned.
- Run the engine only when instructed, and do so in a well-ventilated area.

Maintenance Schedule



- The maintenance schedule specifies the maintenance requirements necessary to ensure safe, dependable performance, and proper emission control.
- Maintenance work should be performed in accordance with Honda's standards and specifications by properly trained and equipped technicians. Your dealer meets all of

these requirements. All scheduled maintenance is considered a normal owner operating cost and will be charged to you by your dealer. Keeping an accurate maintenance record will help ensure your vehicle is properly maintained.

- Make sure whoever performs the scheduled maintenance completes the maintenance record. Retain all service documents. If you sell your vehicle, these service documents should be transferred with the vehicle to the new owner.

Items	Frequency	Odometer Reading*1					Refer to page	
		× 1,000 mi	0.6	2.5	5	7.5		
		× 1,000 km	1.0	4	8	12		
Emission-Related Items	Fuel Line					I	-	
	Throttle Operation			I	I	I	64	
	Air Cleaner*2					R	-	
	Crankcase Breather*3			C	C	C	-	
	Spark Plug				R		-	
	Valve Clearance		Every 15,000 mi (24,000 km): I					-
	Engine Oil		Initial = 600 mi (1,000 km) or 1 month: R Regular = Every 2,500 mi (4,000 km) or 6 months: R					-
	Engine Oil Strainer Screen					C	-	
	Engine Idle Speed		I	I	I	I	-	
	Radiator Coolant*4						57	
	Cooling System					I	-	
	Secondary Air Supply System					I	-	

Maintenance Level

-  : Intermediate. We recommend service by your dealer, unless you have the necessary tools and are mechanically skilled. Procedures are provided in an official Honda Service Manual (P. 90).
-  : Technical. In the interest of safety, have your vehicle serviced by your dealer.

Maintenance Legend

- I** : Inspect (clean, adjust, lubricate, or replace, if necessary)
- R** : Replace
- C** : Clean

Items	Frequency	Odometer Reading*1					Refer to page
		× 1,000 mi	0.6	2.5	5	7.5	
		× 1,000 km	1.0	4	8	12	
Non-Emission-Related Items	Brake Shoes Wear			I	I	I	63
	Brake System		I	I	I	I	59
	Brake Lock Operation		I	I	I	I	24, 60
	Headlight Aim			I	I	I	-
	Clutch Shoes Wear				I		-
	Suspension			I	I	I	-
	Nuts, Bolts, Fasteners		I		I		-
	Wheels/Tires			I	I	I	48
	Steering Head Bearings		I			I	-

Notes:

- *1 : At higher odometer readings, repeat at the frequency interval established here.
- *2 : Service more frequently when riding in unusually wet or dusty areas.
- *3 : Service more frequently when riding in rain or at full throttle.
- *4 : Replace every 2 years. Replacement requires mechanical skill.

Maintenance Fundamentals

Pre-ride Inspection

To ensure safety, it is your responsibility to perform a pre-ride inspection and make sure that any problem you find is corrected. A pre-ride inspection is a must, not only for safety, but because having a breakdown, or even a flat tire, can be a major inconvenience.

Check the following items before you get on your vehicle:

- Tire tread wear and air pressures are within limits.
- Lights, horn, and turn signals operate normally.

Check the following items if you are carrying a cargo:

- Combined weight is within load limits.
- Cargo is secured properly.

Check the following items after you get on your vehicle:

- Throttle action moves smoothly without binding.
- Brake levers operate normally.
- Refuel when needed.
- Engine stop switch functions properly.

Check the following items at regular intervals:

- Oil level is between the upper and lower level marks.
- Engine coolant level is between the UPPER and LOWER level marks.
- Rear brake lock works properly

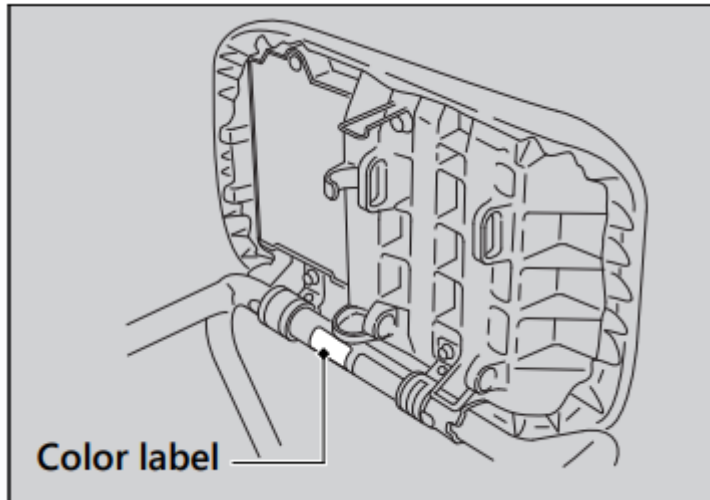
Periodic Checks

- You should also perform other periodic maintenance checks at least once a month regardless of how often you ride, or more often if you ride frequently.
- Also, check the odometer reading against the Maintenance Schedule and perform all maintenance that is due

Tires and wheels	Check the air pressure, examine tread for wear and damage, and check the wheels for damage
Fluid levels	Check the engine oil level, engine coolant level.
Lights	Check that the headlight, brake light, taillight, and turn signals are working properly.
Controls	Check the freeplay of the front and rear brake levers, and throttle grip.
Fuses	Check that you have a full supply of spare fuses
Nuts & bolts	Check the major nuts and bolts, and tighten as needed.

Replacing Parts

- Always use Honda Genuine Parts or their equivalents to ensure reliability and safety. When ordering colored components, specify the model name, color, and code mentioned on the color label.
- When ordering colored components, specify the model name, color, and code mentioned on the color label. The color label is attached to the right seat rail



Engine Oil

- Engine oil consumption varies and oil quality deteriorates according to riding conditions and time elapsed.
- Check the engine oil level regularly, and add the recommended engine oil if necessary. Dirty oil or old oil should be changed as soon as possible.

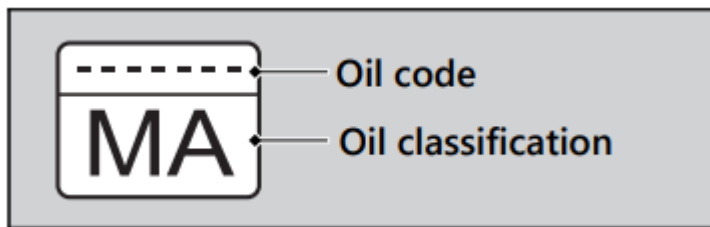
Selecting the Engine Oil

For recommended engine oil, see “Specifications.”

If you use non-Honda engine oil, check the label to make sure that the oil satisfies all of the following standards:

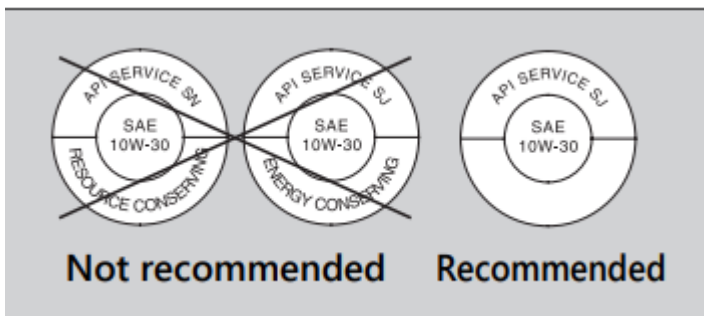
- JASO T 903 standard*1: MA
- SAE standard*2: 10 W-30
- API classification*3: SG or higher

*1. The JASO T 903 standard is an index for engine oils for 4-stroke motorcycle engines. There are two classes: MA and MB. For example, the following label shows the MA classification.



*2. The SAE standard grades oils by their viscosity.

*3. The API classification specifies the quality and performance rating of engine oils. Use SG or higher oils, excluding oils marked as “Energy Conserving” or “Resource Conserving” on the circular API service symbol.



Recommended Coolant

- Pro Honda HP Coolant is a pre-mixed solution of antifreeze and distilled water.
- Concentration: 50% antifreeze and 50% distilled water
- A concentration of antifreeze below 40% will not provide proper corrosion and cold temperature protection.
- A concentration of up to 60% will provide better protection in colder climates.
- NOTICE: Using coolant not specified for aluminum engines or tap/mineral water can cause corrosion

Crankcase Breather

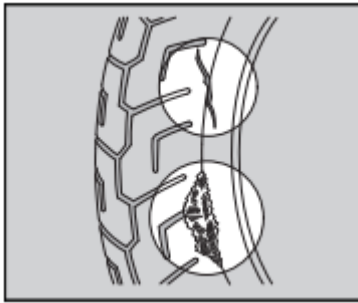
- Service more frequently when riding in rain, at full throttle, or after the vehicle is washed or overturned. Service if the deposit level can be seen in the transparent section of the drain tube.
- If the drain tube overflows, the air filter may become contaminated with engine oil causing poor engine performance

Tires (Inspecting/Replacing)

Checking the Air Pressure

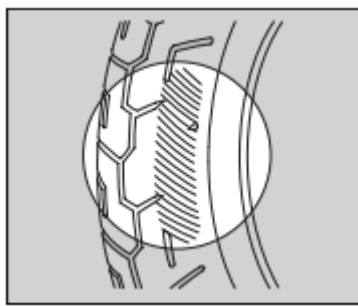
- Visually inspect your tires and use an air pressure gauge to measure the air pressure at least once a month or any time you think the tires look low. Always check air pressure when your tires are cold.

Inspecting for Damage



- Inspect the tires for cuts, slits, or cracks that exposes fabric or cords, or nails or other foreign objects embedded in the side of the tire or the tread. Also inspect for any unusual bumps or bulges in the side walls of the tires.

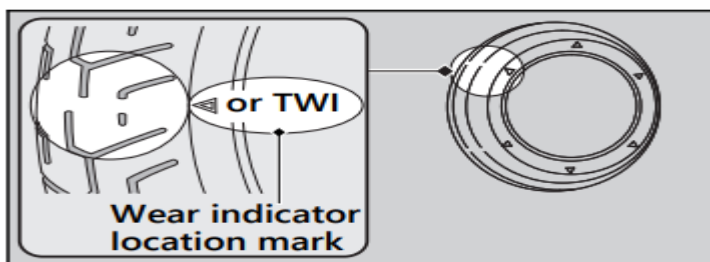
Inspecting for Abnormal Wear



- Inspect the tires for signs of abnormal wear on the contact surface.

Inspecting Tread Depth

- Inspect the tread wear indicators. If they become visible, replace the tires immediately.



Have your tires replaced by your dealer. For recommended tires and air pressure, see “Specifications.”

Follow these guidelines whenever you replace tires.

- Use the recommended tires or equivalents of the same size, construction, speed rating, and load range.
- Do not install a tube inside a tubeless tire on this vehicle. Excessive heat build-up can cause the tube to burst.

- Use only tubeless tires on this vehicle. The rims are designed for tubeless tires, and during hard acceleration or braking, a tubetype tire could slip on the rim and cause the tire to rapidly deflate

Tire Service Life

- The service life of your tires is dependent on many factors, including, but not limited to, riding habits, road conditions, vehicle loading, tire air pressure, maintenance history, speed, and environmental conditions (even when the tires are not in use).
- In addition to your regular inspections and maintenance, it is recommended that you have annual inspections performed once the tires reach 5 years old. It is also recommended that all tires be removed from service after 10 years from the date of manufacture, regardless of their condition or state of wear.
- The last four digits of the TIN (tire identification number) indicate the date of manufacture.

Tire Identification Number (TIN)

- The tire identification number (TIN) is a group of numbers and letters located on the sidewall of the tire.

①
②
③

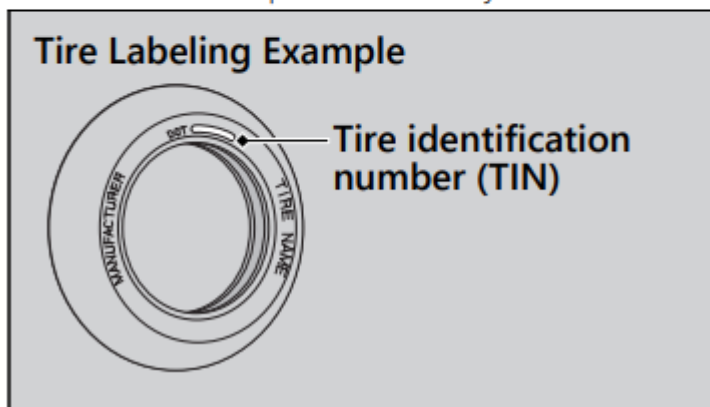
DOT XXXX XXXX 22 09

DOT: This indicates that the tire meets all requirements of the U.S. Department of Transportation.

① XXXX: Factory code

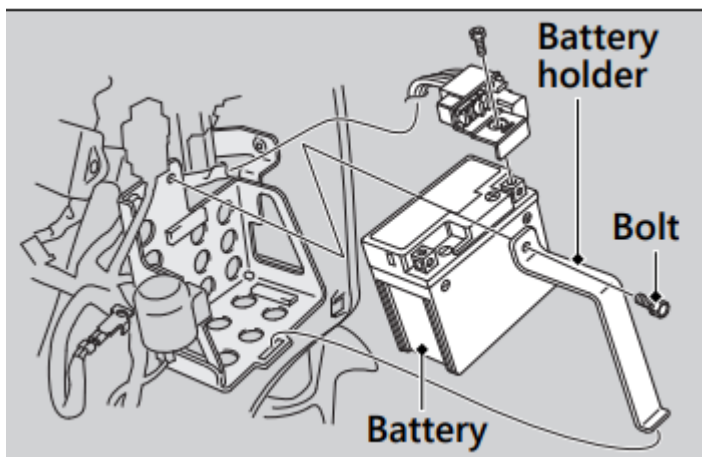
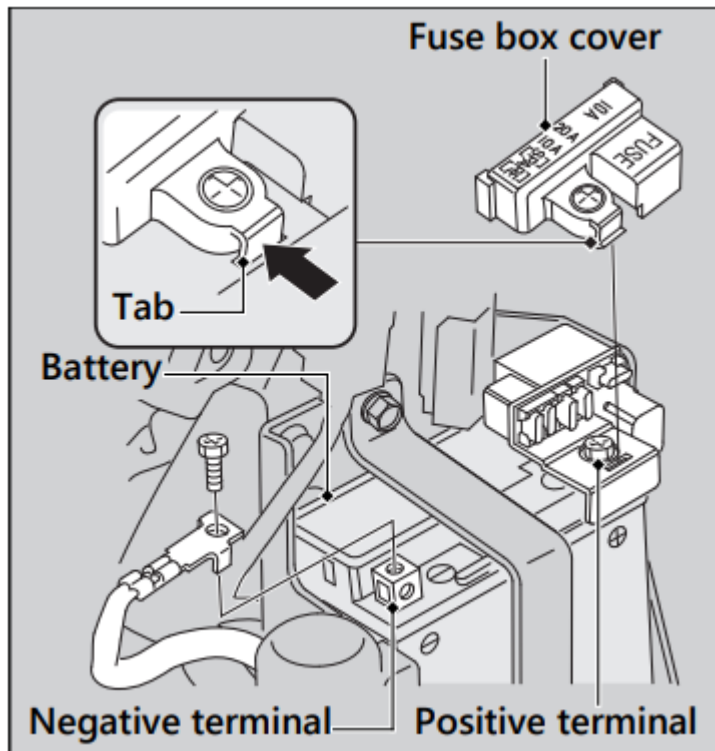
② XXXX: Tire type code

③ 22 09: Date of manufacture (week & year).
Example: week 22 in year 09.



Removing & Installing Body Components

Battery



Removal

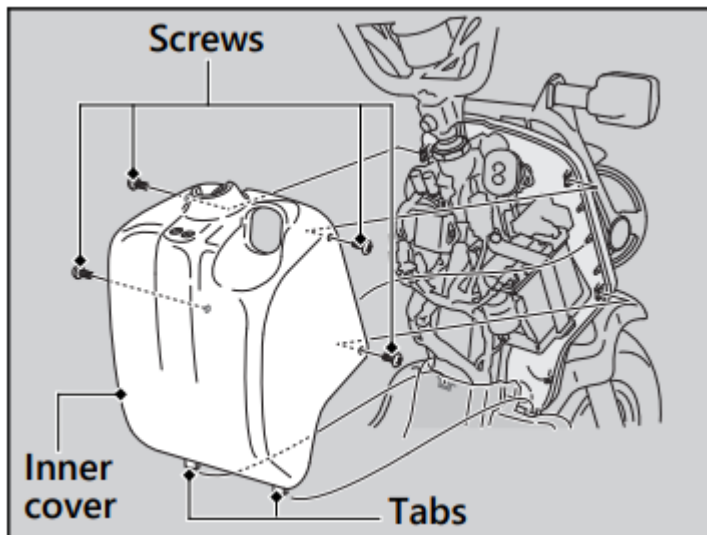
Make sure the ignition switch is in the OFF position.

1. Remove the inner cover.
2. Disconnect the negative - terminal from the battery.
3. Release the tab, then remove the fuse box cover.
4. Disconnect the positive + terminal from the battery
5. Remove the battery holder by removing the bolt.
6. Remove the battery taking care not to drop the terminal nuts.

Installation

- Install the parts in the reverse order of removal. Always connect the positive + terminal first. Make sure that bolts and nuts are tight.
- For proper handling of the battery, see “Maintenance Fundamentals.” “Battery Goes Dead.”

Inner Cover



Removal

1. Remove the screws.
2. Release the tabs, then remove the inner cover.

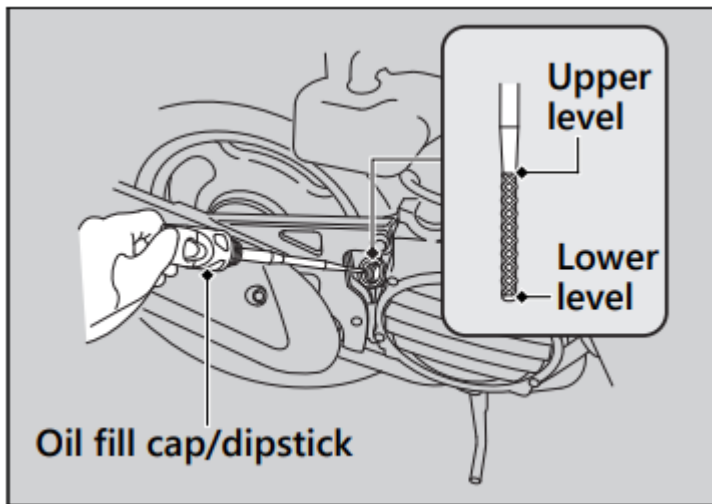
Installation

- Install the parts in the reverse order of removal.

Engine Oil

Checking the Engine Oil

1. If the engine is cold, idle the engine for 3 to 5 minutes.
2. Turn the ignition switch to the OFF position and wait for 2 to 3 minutes.
3. Place your vehicle on its center stand on a firm, level surface.
4. Remove the oil fill cap/dipstick and wipe it clean.
5. Insert the oil fill cap/dipstick until it seats, but don't screw it in.
6. Check that the oil level is between the upper level and lower level marks on the oil fill cap/dipstick.
7. Securely install the oil fill cap/dipstick.



Adding Engine Oil

If the engine oil is below or near the lower level mark, add the recommended engine oil.

1. Remove the oil fill cap/dipstick. Add the recommended oil until it reaches the upper level mark.
 - Place your vehicle on its center stand on a firm, level surface when checking the oil level.
 - Do not overfill above the upper level mark.
 - Make sure no foreign objects enter the oil filler opening.
 - Wipe up any spills immediately.

2. Securely reinstall the oil fill cap/dipstick

NOTICE: Overfilling with oil or operating with insufficient oil can cause damage to your engine. Do not mix different brands and grades of oil.

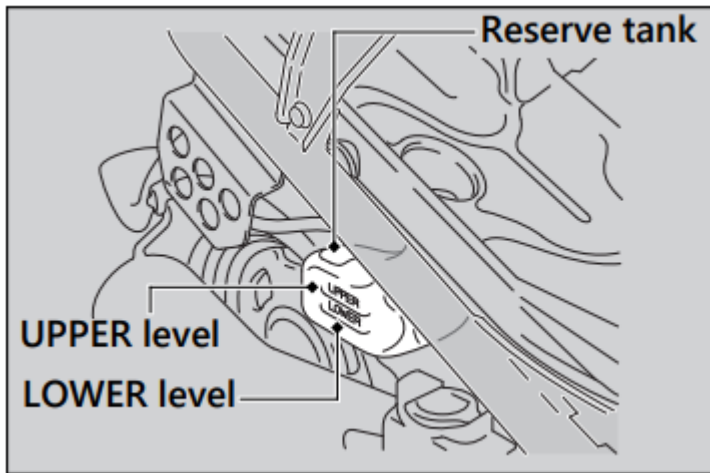
For the recommended oil and oil selection guidelines, see “Maintenance Fundamentals.”

Coolant

Checking the Coolant

Check the coolant level in the reserve tank while the engine is cold.

1. Place your vehicle on its center stand on a firm, level surface.
2. Check that the coolant level is between the UPPER level and LOWER level marks on the reserve tank.

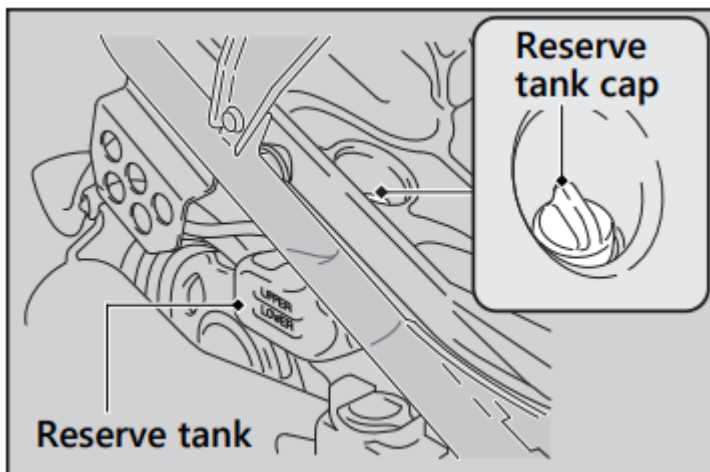


If the coolant level is dropping noticeably or the reserve tank is empty, you likely have a serious leak. Have your vehicle inspected by your dealer.

Adding Coolant

If the coolant level is below the LOWER level mark, add the recommended coolant until the level reaches the UPPER level mark.

Add fluid only from the reserve tank cap and do not remove the radiator cap.



1. Remove the reserve tank cap and add fluid while monitoring the coolant level.
 - Do not overfill above the UPPER level mark.
 - Make sure no foreign objects enter the reserve tank opening.
2. Securely reinstall the reserve tank cap.

Brakes

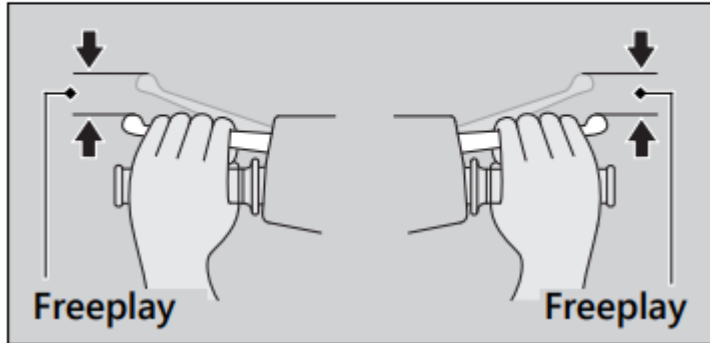
Inspecting the Brake Lever Freeplay

1. Place your vehicle on its center stand on a firm, level surface.

2. Measure the distance the front and rear brake levers move before each brake takes hold.

Freeplay at the tip of the brake levers:

3/8 - 13/16 in (10 - 20 mm)



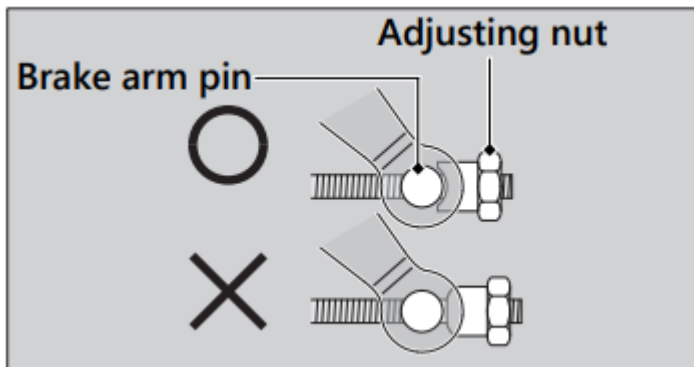
Check the brake cable for kinks or signs of wear. If necessary have it replaced by your dealer.

Lubricate the brake cable with a commercially available cable lubricant to prevent premature wear and corrosion.

Make sure the brake arm, spring and fastener are in good condition.

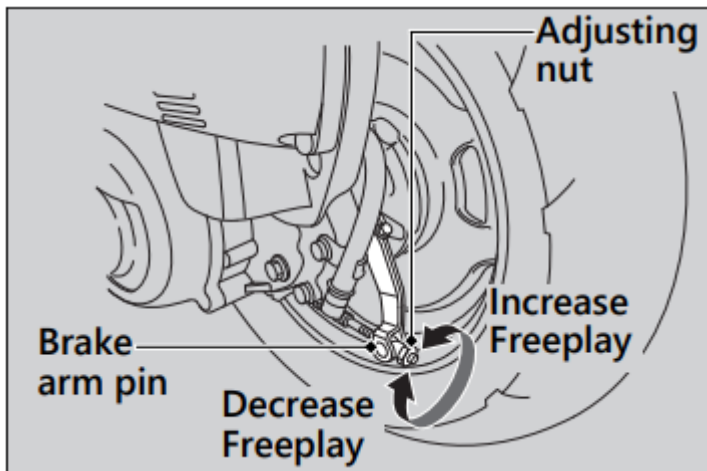
Adjusting the Rear Brake Lever Freeplay

- Adjust the freeplay of the brake lever with the front wheel pointed straight ahead.
- Make sure the cut-out on the adjusting nut is seated on the brake arm pin when adjusting the freeplay.

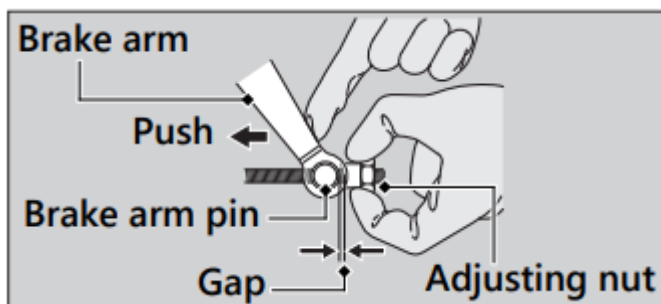


- If proper adjustment cannot be obtained by this method, see your dealer.

1. Adjust by turning the rear brake adjusting nut a half-turn at a time.



2. Apply the brake several times and check for free wheel rotation after the brake lever is released.
3. Push the brake arm to confirm that there is a gap between the rear brake adjusting nut and brake arm pin.



After adjustment, confirm the freeplay of the brake lever.

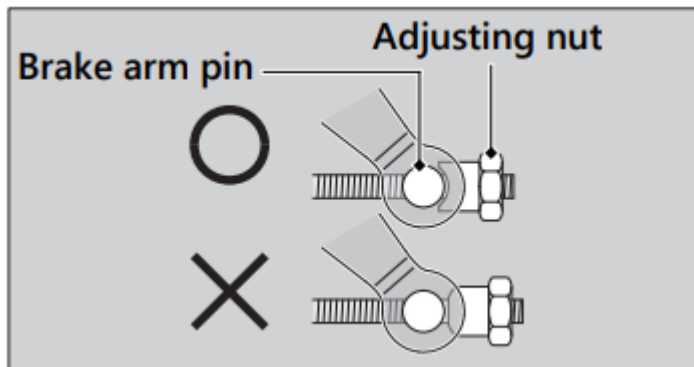
Make sure the brake arm, spring and fastener are in good condition.

NOTICE: Do not turn the adjuster beyond its natural limits.

Adjusting the Front Brake Lever Freeplay

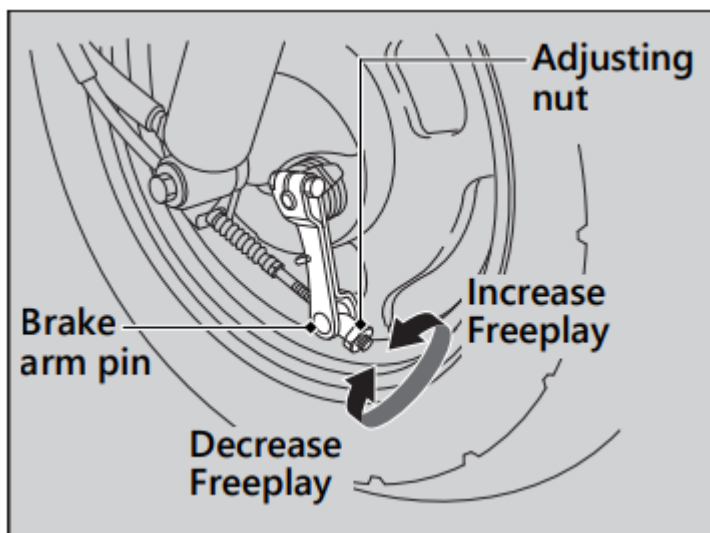
- Adjust the freeplay of the brake lever with the front wheel pointed straight ahead.

- Make sure the cut-out on the adjusting nut is seated on the brake arm pin when adjusting the freeplay.



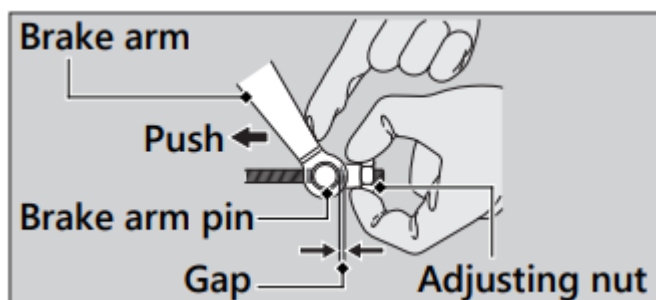
- If proper adjustment cannot be obtained by this method, see your dealer.

1. Adjust by turning the front brake adjusting nut a half-turn at a time.



2. Apply the brake several times and check for free wheel rotation after the brake lever is released.

3. Push the brake arm to confirm that there is a gap between the front brake adjusting nut and brake arm pin.



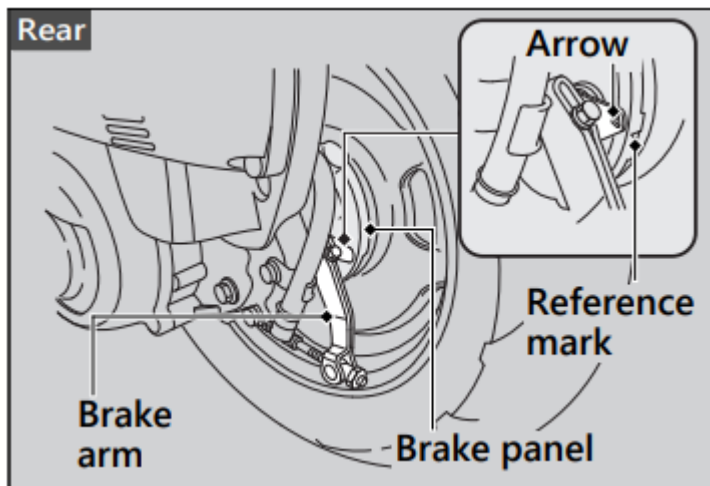
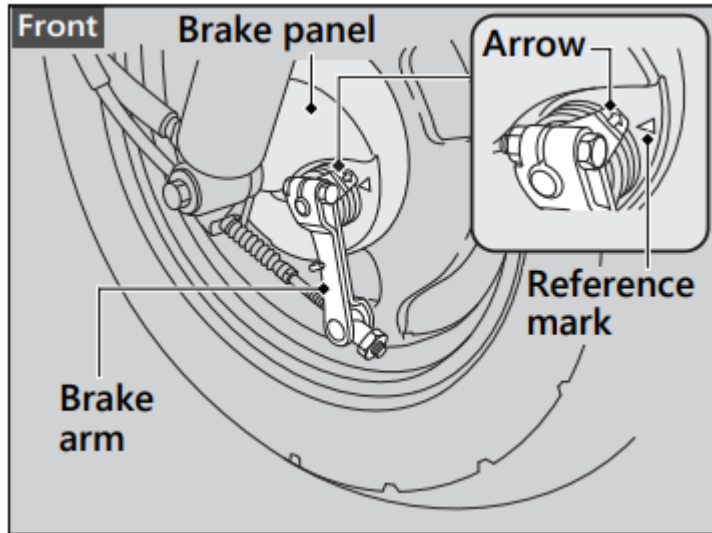
After adjustment, confirm the freeplay of the brake lever.

Make sure the brake arm, spring and fastener are in good condition.

NOTICE: Do not turn the adjuster beyond its natural limits.

Inspecting the Brake Shoe Wear

- The front and rear brake are equipped with a brake wear indicator.



- When the brake is applied, an arrow attached to the brake arm moves toward a reference mark on the brake panel. If the arrow aligns with the reference mark on full application of the brake, the brake shoes must be replaced. See your dealer for this service.
- When the brake service is necessary, see your dealer. Use only Honda Genuine Parts or its equivalent.

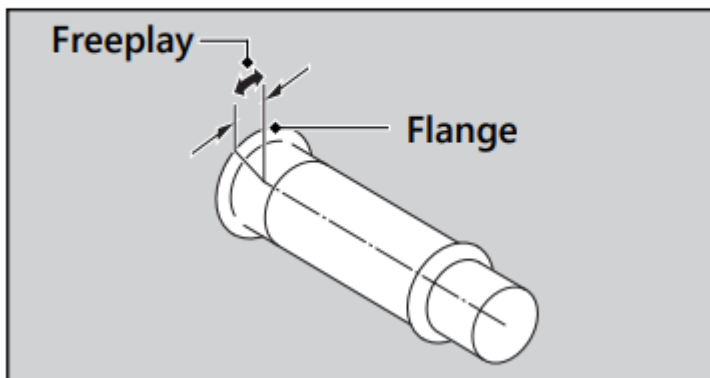
Throttle

Checking the Throttle

- With the engine off, check that the throttle rotates smoothly from fully closed to fully open in all steering positions and throttle freeplay is correct. If the throttle does not move smoothly, close automatically, or if the cable is damaged, have the vehicle inspected by your dealer.

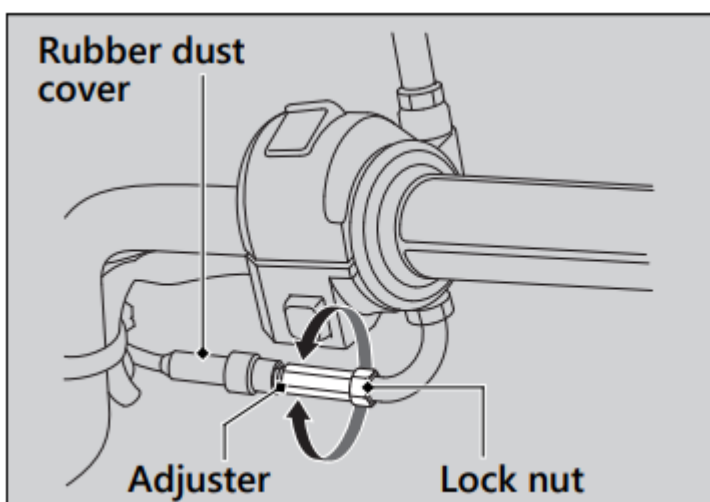
Freeplay at the throttle grip flange:

1/16 - 1/4 in (2 - 6 mm)



Adjusting the Throttle Freeplay

1. Slide the rubber dust cover.
2. Loosen the lock nut.
3. Turn the adjuster until the freeplay is 1/16 - 1/4 in (2 - 6 mm).
4. Tighten the lock nut, return the rubber dust cover, and inspect the throttle action again.



Troubleshooting

Engine Will Not Start

Starter Motor Operates But Engine Does Not Start


Check the following items:

- Check the correct engine starting sequence.
- Check that there is gasoline in the fuel tank.

Starter Motor Does Not Operate

Check the following items:

Check the correct engine starting sequence.

- Make sure engine stop switch is in the  (Run) position.
- Check for a blown fuse.
- Check for a loose battery connection or battery terminal corrosion
- Check the condition of the battery.

If the problem continues, have your vehicle inspected by your dealer

Overheating (High coolant temperature indicator is on)

The engine is overheating when the following occurs:

- High coolant temperature indicator comes on.
- Acceleration becomes sluggish. If this occurs, pull safely to the side of the road and perform the following procedure.

Extended fast idling may cause the high coolant temperature indicator to come on.

NOTICE: Continuing to ride with an overheated engine can cause serious damage to the engine.

1. Stop the engine using the ignition switch.
2. Allow the engine to cool with the ignition switch in the OFF position.
3. After the engine has cooled, inspect the radiator hose and check if there is a leak. If there is a leak: Do not start the engine. Transport your vehicle to your dealer.
4. Check the coolant level in the reserve tank.
 - Add coolant as necessary.
5. If 1-4 check normal, you may continue riding, but closely monitor the high coolant temperature indicator.

Tire Puncture

Repairing a puncture or removing a wheel requires special tools and technical expertise. We recommend you have this type of service performed by your dealer.

After an emergency repair, always have the tire inspected/replaced by your dealer.

Emergency Repair Using a Tire Repair Kit

- If your tire has a minor puncture, you can make an emergency repair using a tubeless tire repair kit.
- Follow the instructions provided with the emergency tire repair kit. Riding your vehicle with a temporary tire repair is very risky. Do not exceed 30 mph (50 km/h). Have the tire replaced by your dealer as soon as possible.

WARNING: Riding your vehicle with a temporary tire repair can be risky. If the temporary repair fails, you can crash and be seriously injured or killed. If you must ride with a temporary tire repair, ride slowly and carefully and do not exceed 30 mph (50 km/h) until the tire is replaced.

Electrical Trouble

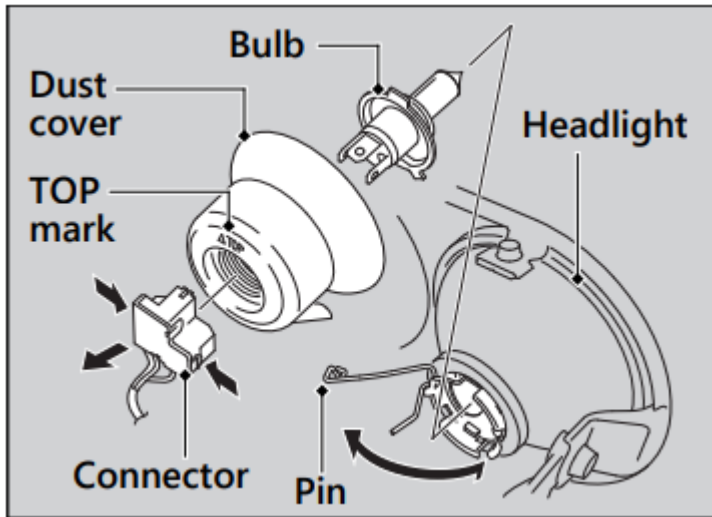
Battery Goes Dead

- Charge the battery using a motorcycle battery charger.
- Remove the battery from the vehicle before charging.
- Do not use an automobile-type battery charger, as these can overheat a motorcycle battery and cause permanent damage. If the battery does not recover after recharging, contact your dealer.
- **NOTICE:** Jump starting using an automobile battery can damage your vehicle's electrical system and is not recommended. Bump starting is also not recommended.

Burned-out Light Bulb

- Follow the procedure below to replace a burned-out light bulb. Turn the ignition switch to the OFF or LOCK position.
- Allow the bulb to cool before replacing it. Do not use bulbs other than those specified. Check the replacement bulb for correct operation before riding.
- For the light bulb wattage, see "Specifications."

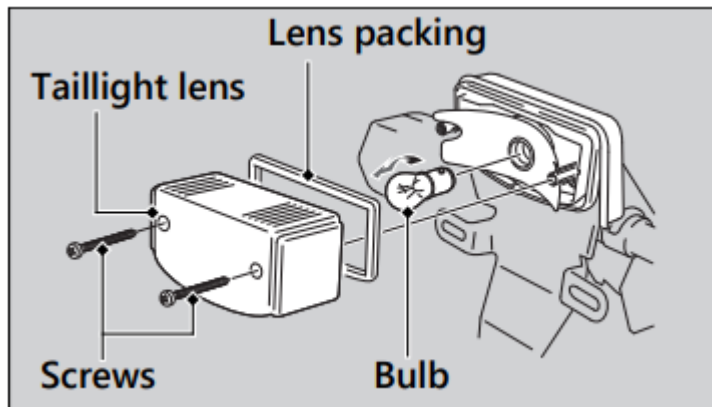
Headlight Bulb



1. Disconnect the connector by pressing the tabs.
2. Remove the dust cover.
3. Unhook the pin and remove the bulb.
4. Install a new bulb and parts in the reverse order of removal.
 - Install the dust cover with its TOP mark facing up.

Do not touch the glass surface with your fingers. If you touch the bulb with your bare hands, clean it with a cloth moistened with isopropyl (rubbing) alcohol

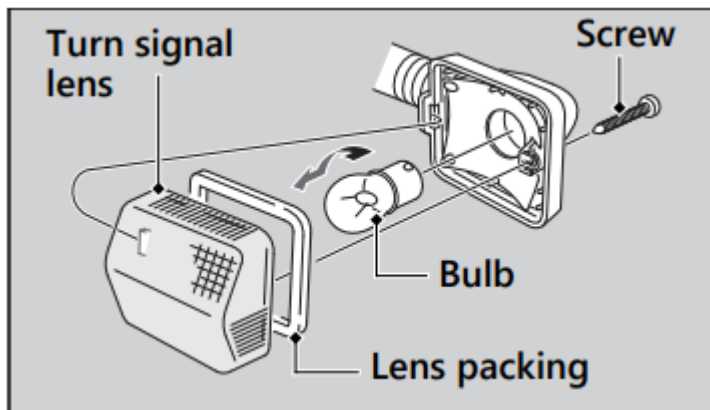
Brake/Taillight Bulb



1. Remove the taillight lens by removing the screws.
2. Slightly press the bulb in and turn it counterclockwise.
3. Install a new bulb and parts in the reverse order of removal.
 - After putting back the lens packing in place, install the taillight lens.

Front/Rear Turn Signal Bulb



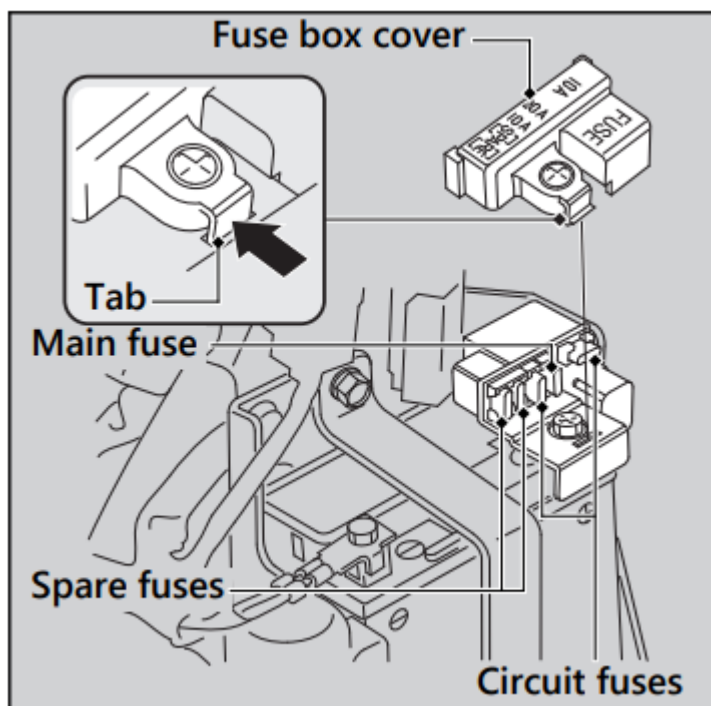


1. Remove the turn signal lens by removing the screw.
2. Slightly press the bulb and turn it counterclockwise.
3. Install a new bulb in the reverse order of removal.
 - After putting back the lens packing in place, install the turn signal lens.

Blown Fuse

Before handling fuses, see “Inspecting and Replacing Fuses.”

Fuse Box Fuses



1. Remove the inner cover.
2. Remove the fuse box cover by pressing the tab.
3. Pull the main fuse and circuit fuses out one by one and check for a blown fuse. Always replace a blown fuse with a spare fuse of the same rating.

4. Install the fuse box cover.
5. Install the inner cover.

NOTICE: If a fuse fails repeatedly, you likely have an electrical problem. Have your vehicle inspected by your dealer.

Caring for Your Vehicle

Frequent cleaning and polishing is important to ensure the life of your Honda. A clean vehicle makes it easier to spot potential problems. In particular, seawater and salts used to prevent ice on roads promote the formation of corrosion. Always wash your vehicle thoroughly after riding on coastal or treated roads.

Washing

Allow the engine, muffler, brakes, and other high-temperature parts to cool before washing.

1. Rinse your vehicle thoroughly using a low pressure garden hose to remove loose dirt.
2. If necessary, use a sponge or a soft towel with mild cleaner to remove road grime.
 - Clean the headlight lenses, panels, and other plastic components with extra care to avoid scratching them. Avoid directing water into the air cleaner, muffler, and electrical parts.
3. Thoroughly rinse your vehicle with plenty of clean water and dry with a soft, clean cloth.
4. After the vehicle dries, lubricate any moving parts.
 - Make sure that no lubricant spills onto the brakes or tires. Brake discs, pads, drum or shoes contaminated with oil will suffer greatly reduced braking effectiveness and can lead to a crash.
5. Apply a coat of wax to prevent corrosion.
 - Avoid products that contain harsh detergents or chemical solvents. These can damage the metal, paint, and plastic on your vehicle. Keep the wax clear of the tires and brakes.
 - If your vehicle has any matte painted parts, do not apply a coat of wax to the matte painted surface.

Washing Precautions

Follow these guidelines when washing:

- Do not use high-pressure washers:
 - High-pressure water cleaners can damage moving parts and electrical parts, rendering them inoperable.
 - Water in the air intake can be drawn into the carburetor and/or enter the air cleaner.
- Do not direct water at the muffler:
 - Water in the muffler can prevent starting and causes rust in the muffler.
- Dry the brakes:
 - Water adversely affects braking effectiveness. After washing, apply the brakes intermittently at low speed to help dry them.
- Do not direct water under the seat:
 - Water in the owner's manual storage compartment can damage your documents and other belongings.
- Do not direct water at the air cleaner:
 - Water in the air cleaner can prevent the engine from starting.
- Do not direct water near the headlight:
 - The headlight's inside lens may fog temporarily after washing or while riding in the rain. This does not impact the headlight function.
 - Any condensation inside the headlight should dissipate after a few minutes of running the engine with the headlight(s) on. However, if you see a large amount of water or ice accumulated inside the lens(es), have your vehicle inspected by your dealer.
- Do not use wax or polishing compounds on matte painted surface:
 - Use a soft cloth or sponge, plenty of water, and a mild detergent to clean matte painted surfaces. Dry with a soft clean cloth.

Aluminum Components

Aluminum will corrode from contact with dirt, mud, or road salt. Clean aluminum parts regularly and follow these guidelines to avoid scratches:

- Do not use stiff brushes, steel wool, or cleaners containing abrasives.
- Avoid riding over or scraping against curbs.

Panels

Follow these guidelines to prevent scratches and blemishes:

- Wash gently using a soft sponge and plenty of water.
- To remove stubborn stains, use diluted detergent and rinse thoroughly with plenty of water.
- Avoid getting gasoline or detergents on the instruments, panels, or headlight.

Exhaust Pipe and Muffler

- When the exhaust pipe and muffler are painted, do not use a commercially available abrasive kitchen cleaning compound. Use a neutral detergent to clean the painted surface on the exhaust pipe and muffler. If you are not sure if your exhaust pipe and muffler are painted, contact your dealer.

Storing Your Vehicle

If you store your vehicle outdoors, you should consider using a full-body cover. If you won't be riding for an extended period, follow these guidelines:

- Wash your vehicle and wax all painted surfaces (except matte painted surfaces). Coat chrome pieces with rust-inhibiting oil.
- Place your vehicle on its center stand and position a block so that both tires are off the ground.
- After rain, remove the body cover and allow the vehicle to dry.
- Remove the battery to prevent discharge. Fully charge the battery and then place it in a shaded, well-ventilated area.
 - If you leave the battery in place, disconnect the negative - terminal to prevent discharge.

After removing your vehicle from storage, inspect all maintenance items required by the Maintenance Schedule.

USA: For more information about storage, refer to the Honda Winter Storage Guide, available from your dealer.

Canada: For more information about storage, visit our website at www.honda.ca and look up "Storage Tips" under the "Honda Warranty" in the Warranty tab for your Model.

Warning

This content is compiled from multiple sources and is provided for reference purposes only. It may not be complete or fully applicable to all situations. If you are unable to resolve your issue, please contact the product manufacturer or an authorized service provider for official support.

Document generated by [ManualsFile](#)

