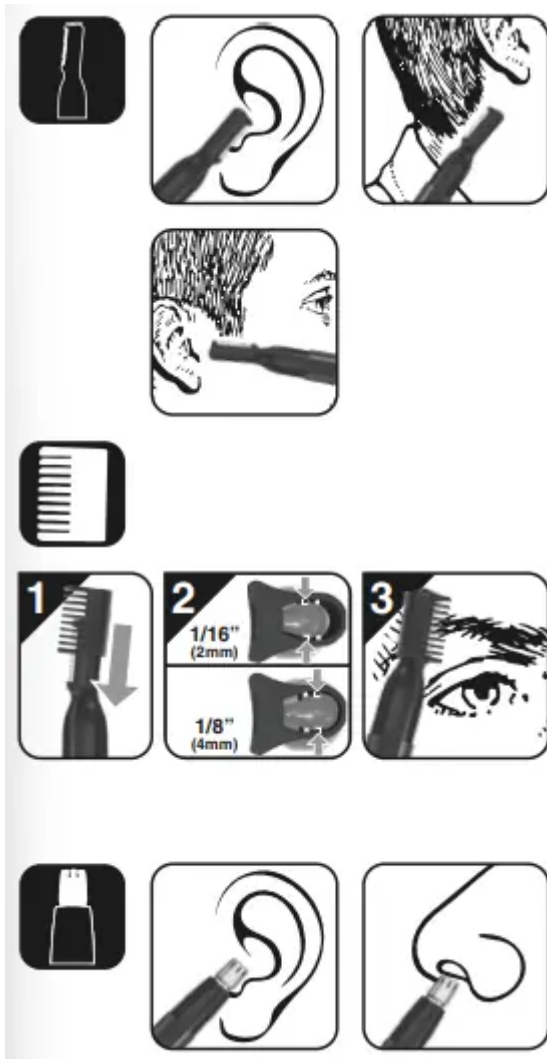
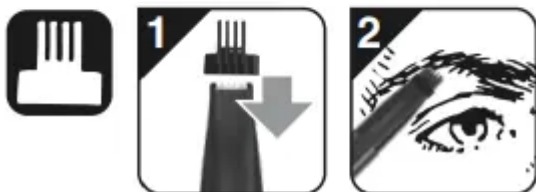
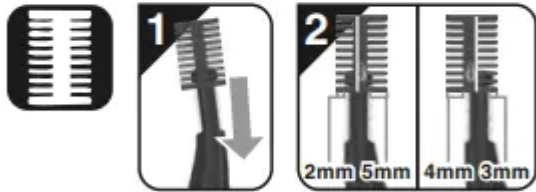



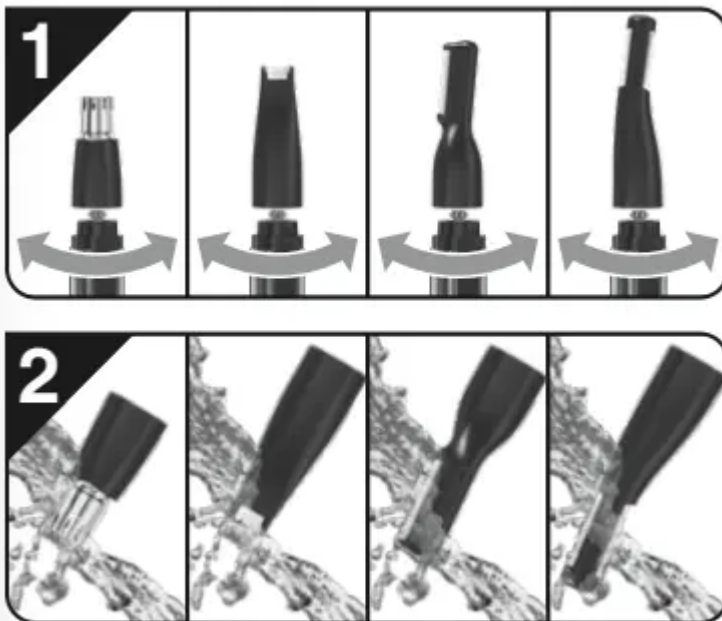
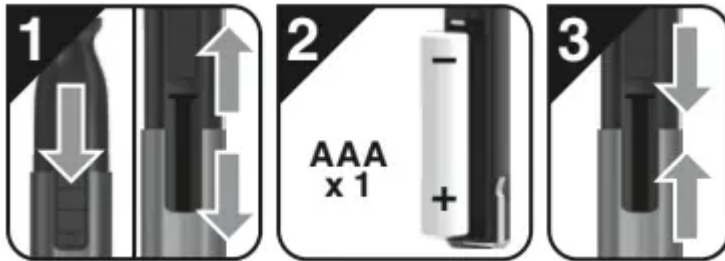
# User manual Trimmer







 AAA Non-Rechargeable  
Alkaline or Lithium  
AAA No Recargable  
Alcalina o Litio





## **IMPORTANT SAFEGUARDS**

When using your electrical appliance, basic precautions should always be followed, including the following:

**READ ALL INSTRUCTIONS AND SAFEGUARDS BEFORE USING THIS APPLIANCE.**

### **SAVE THESE INSTRUCTIONS**

#### **For Household Use Only**

#### **WARNING**

To reduce the risk of injury to persons:

1. This appliance can be used by children aged from 14 years and above and persons with reduced physical, sensory or mental capabilities or lack of experience and knowledge if they have been given supervision or instruction, by a person responsible for their safety, concerning the use of the appliance in a safe way and understand the hazards involved. Children should be supervised to ensure that they do not play with the appliance. Cleaning and user maintenance shall not be made by children without supervision.
2. Use this appliance only for its intended use as described in the manual. Do not use attachments not recommended by the manufacturer.
3. Do not use this appliance with parts or attachments that have been damaged or broken as injury may occur.
4. When discarding an old battery, do not throw it into fire where heat could cause it to rupture or explode. Also, do not attempt to recharge alkaline, heavy-duty, or lithium batteries in a battery charger. Remove the exhausted batteries from the appliance, and dispose properly.
5. Risk of fire and burns. Do not recharge, disassemble, or incinerate. Keep battery out of reach of children. Dispose of used batteries promptly.
6. Different types of batteries (alkaline, standard, rechargeable, etc.) or new and used batteries are not to be mixed.

7. If the appliance is to be stored unused for a long period, the batteries should be removed.
8. The battery terminals are not to be short-circuited.

**Our units are quality tested with hygienic fibers. Any residual fibers do not affect performance and can be brushed off.**

**Warning**

This content is compiled from multiple sources and is provided for reference purposes only. It may not be complete or fully applicable to all situations. If you are unable to resolve your issue, please contact the product manufacturer or an authorized service provider for official support.