

Product View



1. Spray Trigger
2. Extra Long Power Cord
3. Upper Handle
4. Flex Hose
5. Power Switch
6. Carry Handle
7. Tank Carry Handle
8. Large Capacity 2-in-1 Water Tank
9. Surround Suction®
10. Easy To Remove Nozzle
11. EdgeSweep® Brushes
12. Lower Base
13. Upper Hose Wrap
14. Lower Hose Wrap
15. Handle Recline Pedal

Assembly

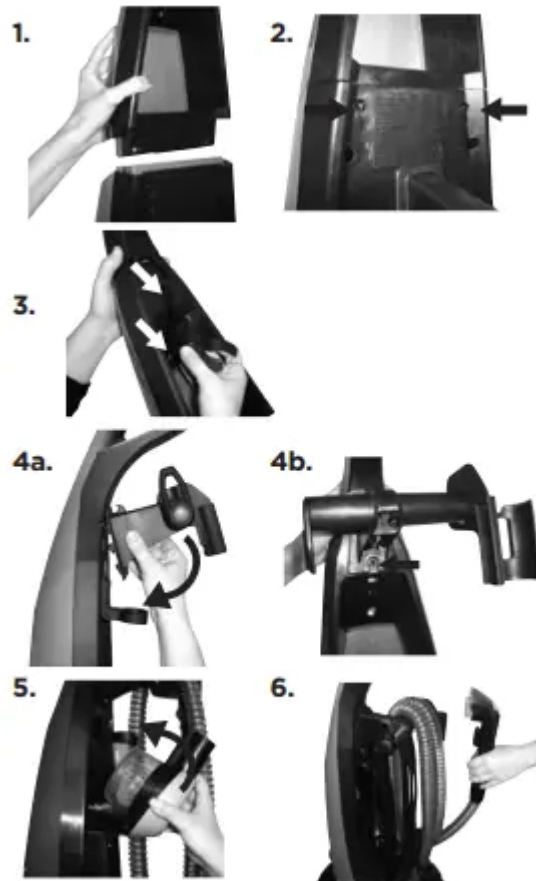
Your deep cleaner comes in three (four on select models) easy-to-assemble components:

Upper Handle with Screws

Lower Base

Upper Hose Wrap

Upper Tool Holder (select models)



The only thing you will need to assemble your cleaner is a Phillips-head screwdriver.

1. Slide Upper Handle onto lower handle.
2. Screw 2 screws into the marked holes (screws will be taped to handle).
3. Attach the Upper Tool Holder (select models) to the Upper Handle by snapping the bottom half in first, then snapping in the top half.
4. Place Upper Hose Wrap onto back of Upper Handle, and secure with screw.
5. Snap tools onto the Upper Tool Holder (select models).
6. Wrap power cord and Flex Hose. Snap hose wand into hose clip on upper hose wrap.

NOTE: Take care to wrap the hose in the right direction in order to make use of the hose clip. Make sure the hose is wrapped beginning from the back of the machine and wrapping toward the front.

Deep cleaner assembly is now complete.

Operations

Cleaning Formulas

WARNING

- To reduce the risk of fire and electric shock due to internal component damage, use only BISSELL cleaning formula intended for use with this machine.
- To reduce the risk of fire and electric shock, when cleaning a hard floor, the BISSELL bare floor tool must be used and it must only be used with BISSELL 2X Hard Floor Solutions cleaning fluid intended for use with this appliance. Visit BISSELL.com to purchase.

Keep plenty of BISSELL® cleaning formulas on hand so you can clean whenever it fits your schedule.

NOTE: Always use genuine BISSELL cleaning formulas upholstery washers in your machine.

			
Clean + Refresh Powerful cleaning and odor elimination with Febreze freshness	PET Stain & Odor Removes tough pet stains <i>Includes StainProtect™ to protect against future stains</i>	PRO MAX Clean + Protect Our most powerful formula for tough, ground-in dirt & stains <i>Includes StainProtect to protect against future stains</i>	PET PRO OXY Urine Eliminator Our best formula for pet urine stains & odors <i>Includes StainProtect to protect against future stains</i>

Certain trademarks used under license from The Procter & Gamble Company or its affiliates.

Pretreat

Pretreat spots and stains to improve carpet cleaning performance.

		
PET Stain Pretreat Removes tough pet stains & odors with Enzyme Action	PET PRO OXY Stain Destroyer Removes tough pet stains & odors with OXY	PET Pretreat + Sanitize Penetrates to sanitize and loosen tough stains

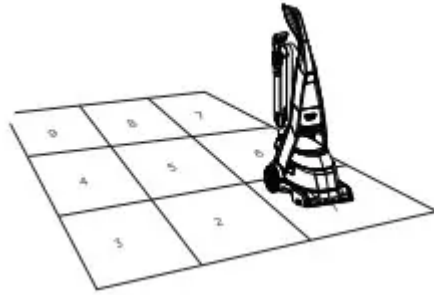
Boost

Add Boost carpet cleaning formula enhancers to any formula to increase its effectiveness.

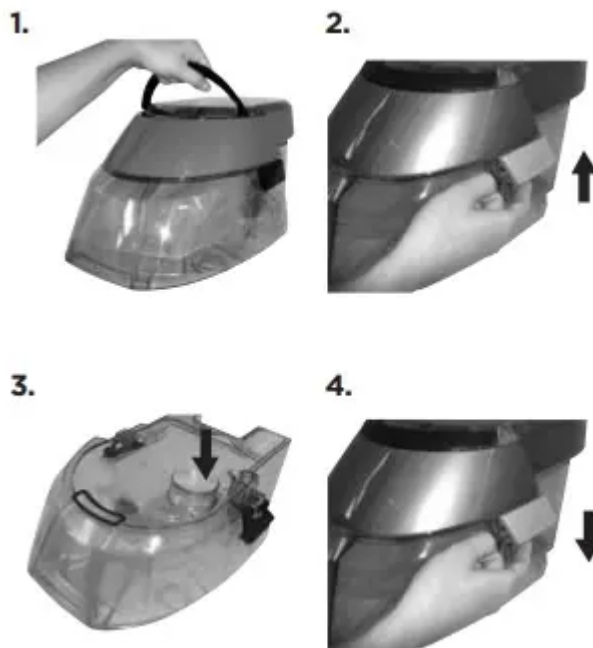
		
OXY Boost Removes old, set-in stains	PRO MAX Boost Add to formula for 2X deep cleaning power	PET OXY Boost Removes pet stains and odors

Before You Clean

1. Move furniture to another area if cleaning an entire room (optional).
2. Pick up all loose dirt, debris, and pet hair before deep cleaning. It is recommended that you vacuum the area prior to deep cleaning.
3. Plan your cleaning route to leave an exit path. It is best to begin cleaning in the corner farthest from your exit.
4. Pretreating (optional) Pretreating is recommended to improve cleaning effectiveness for heavily soiled carpet in hightraffic areas such as entryways and hallways.
 - a. Using a BISSELL Stain pretreater, generously spray evenly over soiled area. Do not overwet.
 - b. Wait 3-5 minutes before deep cleaning.
 - c. Clean as normal using your BISSELL® deep cleaner.



Machine Prep



1. Fill the 2-in-1 Water Tank. Remove the tank from the base of the machine by lifting up the tank Carry Handle. Carry like a bucket to the sink.
2. Unlatch the top of the tank from the bottom by lifting up on the tank latches on either side of the tank.
3. Using the measuring cup provided, pour 2.5 oz. of BISSELL formula into the heavy-duty bladder. Fill the rest of the bladder with hot tap water. **DO NOT BOIL OR MICROWAVE WATER.**
4. Place the top of the tank back on the bottom and secure the latches on both sides

NOTE: Always use genuine BISSELL formulas to maximize cleaning and for the safety of your machine.

NOTE: Remember to secure the tank latches on either side of the tank and test to make sure they are secure before picking up the tank.

Carpet Cleaning



1. Plug into a proper outlet and push the Power Switch located on the front of the handle.
2. Recline the handle by pressing on the lever at the back of the machine behind the 2-in-1 Water Tank.
3. Cleaning Strokes. While pressing the trigger, make one slow forward wet pass and another one back. Caution: Do not overwet. Take care not to run over loose objects or edges of area rugs. Stalling brush may result in premature belt failure.
4. Release the trigger and make one slow forward and backward pass over the same area to remove any residual dirty water and aid in drying. Repeat cleaning passes until solution being pulled up appears clean. Continue passes without pressing the trigger until you can't see any more water being pulled up.

NOTE: Your machine is equipped with a circuit breaker that will automatically shut off the brush if a large or loose object is caught in the Brush Roll. If that happens, be sure to unplug your machine, remove the foreign object, and then plug the machine back in to reset the circuit breaker.

CleanShot® (select models)



CleanShot is an optional feature that can be used to fight tough stains. It can be used as either a tough stain pretreater or can be used during the deep cleaning process itself. To use CleanShot either way, follow the instructions below.

1. Press the CleanShot button on the front of the machine's handle and aim the focused stream onto the stain for up to 5 seconds.
2. Allow the formula to soak in for 15 seconds.
3. Run the machine over the stain to extract until no formula or water can be seen coming up from the carpet.
4. Repeat as needed until the stain is gone.

Cleaning with Attachments

Your deep cleaner comes equipped with a hose and at least one attachment for cleaning stairs, upholstery and more.

Important! If using to clean upholstery, check upholstery tags.

1. Check manufacturer's tag before cleaning. "W" or "WS" on the tag means you can use your deep cleaner. If the tag is coded with an "X" or an "S" (with a diagonal stripe through it), or says "Dry Clean Only", do not proceed with any deep cleaning machine. Do not use on velvet or silk. If manufacturer's tag is missing or not coded, check with your furniture dealer. Check for colorfastness in an inconspicuous place. If possible, check upholstery stuffing. Colored stuffing may bleed through fabric when wet. Plan activities to allow upholstery time to dry. Pick up any loose dirt, debris and pet hair before deep



cleaning.

2. Follow the instructions on page 6 for filling the 2-in-1 Water Tank.
3. The DeepClean Premier® is designed with an automatic diverter. Simply lock the machine upright in order to clean with the hose.
- 4.



Attach the cleaning tool to the end of the hose.

5. Plug in and turn on the Power Switch.
6. Clean by pressing the trigger to spray solution onto the area to be cleaned. Slowly move the tool back and forth over the soiled surface. Release the trigger to suction soiled water. Continue to clean in the area, working in small sections, until no more dirt can be removed. Rinse (optional) and suction as needed. Caution: Do not overwet.
7. Remove and rinse tools in clean, running water. Dry and replace on the end of the hose.
8. It is recommended that you suction clean water from a bowl to rinse out the hose.
9. Before replacing lift end of hose and stretch out to ensure all water is cleared from hose.



10. Wrap Flex Hose around the hose wrap.
11. Empty 2-in-1 Water Tank and rinse out, following the instructions

Cleaning with the Stain Trapper Tool (select models)

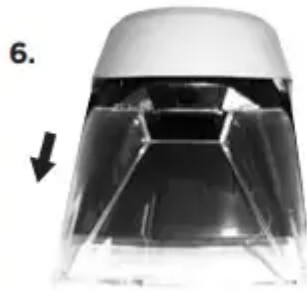
Your deep cleaner may have come with a Stain Trapper Tool. This tool is great for keeping messes out of the machine's hose system.

1. Attach the Stain Trapper Tool to the end of the hose.
2. Gently scrape up any semi-solids with a spoon or spatula. Do not use a knife or other utensil with sharp edges because it could damage the carpet or upholstery.
3. Follow instructions 3-6 on page 8 under "Cleaning with attachments"
4. To empty the tool, rotate the small tank on the bottom of the tool to unlock it.

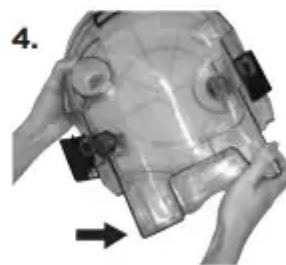
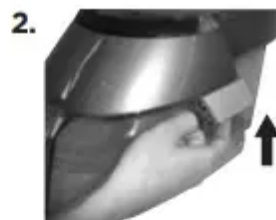


5. Dump dirty water into a sink or toilet and rinse the tank out with clean water. Replace the tank by lining up the unlock symbol with the small arrow on the tank and turning it to the lock symbol.

6. Clean the front of the tool by removing the plate over the suction path. Pull down on the bottom of the plate to remove. Run the tool and the plate under clean water to rinse taking care to remove all debris. Replace the front plate by sliding it back into place.



Clean-Up



1. Remove the tank from the base of the machine by lifting up on the tank Carry Handle. Carry like a bucket to a utility sink or outside where you will dispose of the dirty water.
2. Unlatch the top of the tank from the bottom by lifting up on the tank latches on either side of the tank.
3. Remove the top of the tank by lifting up on the handle.
4. Lift the bottom portion of the tank; pour out dirty water in the sink through the rectangular shaped opening in the corner of the tank.

5. Empty the Pet Hair Basket (select models) by sliding it toward the front of the tank and lifting up. Replace the Pet Hair Basket before storing/continuing to clean.



6. Fill the heavy-duty bladder with clean hot tap water.
7. Water rinse (recommended). Rinsing is an optional step that can be done during the cleaning process or after the carpeted area has been completed. Empty the heavy-duty bladder if necessary, and refill with hot tap water only. Replace the tank on the machine. Take care to do a forward (wet) stroke by depressing the trigger, and a backward (wet) stroke, followed by a forward and backward (dry) stroke, releasing the trigger. Continue this until the water you see coming up the nozzle is clear.

NOTE: You may notice hair & debris deposits on the carpet or in the tank that were loosened by the cleaning action. This debris should be picked up and thrown away. Check the red lint filter near the duct on the back of the machine base for debris and remove before continuing.

NOTE: Remember to secure the tank latches and test to make sure it is secure before picking up the tank.

Stain Removal

Do Not Delay! Attending to an accident soon after it occurs ensures the most optimal clean. Leaving it for an extended period of time may cause it to set and become permanent.

1. Blot up liquids with an absorbent cloth or paper towels. White materials are recommended because certain dyes may bleed and make the stain worse.
2. Gently scrape up any semi-solids with a spoon or spatula. Do not use a knife or other utensil with sharp edges because it could damage the carpet or upholstery.
3. If the area has already dried, separate and remove from the carpet whatever semi-solids and residue that can be accessed before deep cleaning.
4. Be sure to test any spot removal formulas in an inconspicuous area first. This is important as some dyes and materials could be damaged or discolored by cleaning solvents. If such a change should occur, try a different solution or call a professional.
5. If cleaning on Berber carpeting, gently run your machine over a hidden area. If no fuzzing occurs, continue cleaning in soiled area.
6. Using a BISSELL® pretreater, spray evenly over soiled area. Do not overwet. Wait 3-5 minutes. Gently work the solution by blotting area with a clean, damp, color safe cloth.

7. Clean large areas with the DeepClean Premier® machine or use the hose to clean spots, stains and hard-to-reach areas.

Machine Storage

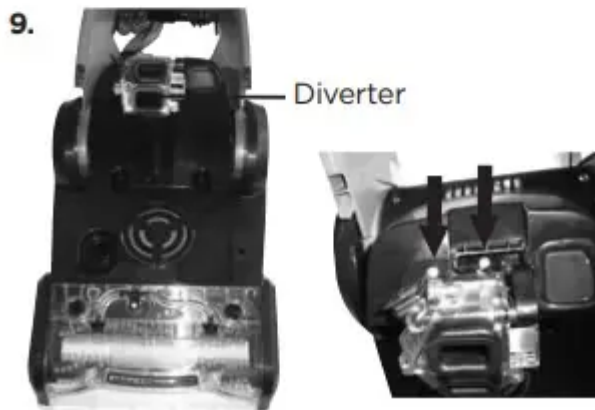
Once your cleaning is complete, make sure the 2-in-1 Water Tank is emptied, rinsed out, and dried before the next use.

NOTE: Store cleaner in a protected, dry area. To reduce the risk of a leaking condition, do not store appliance where freezing may occur. Damage to internal components may result.

Maintenance & Care

Machine Care

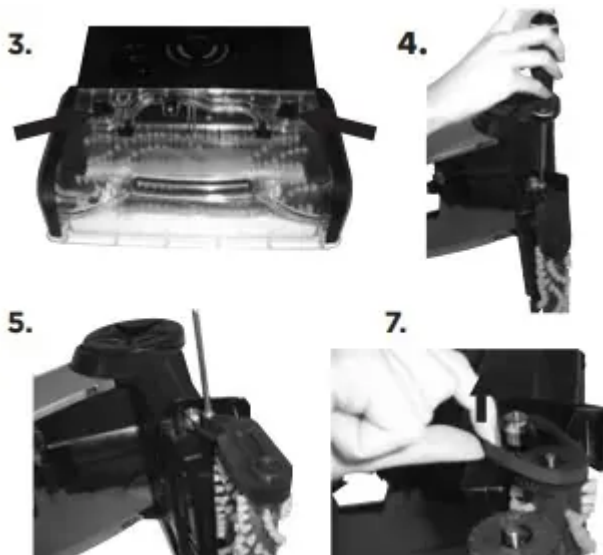
For best results, a few simple steps can assure your machine is well maintained after your cleaning is complete.



1. Flush your machine of any remaining solution. Fill the 2-in-1 Water Tank with clean hot tap water. Recline the handle and press the Spray Trigger for 15 seconds while making forward and backward passes on carpet. Release the trigger to suction. Repeat for another 15 seconds. Continue without pressing the trigger until there is no more water being suctioned.
2. Push the Power Switch to turn the machine OFF. Unplug the machine and wrap the power cord. Empty the 2-in-1 Water Tank.
3. Rinse out tank with hot tap water, taking care to clean underneath the heavy-duty bladder and all around it.
4. The top half of the tank can be rinsed clean through the nozzle area. Clear the red filter of any debris that may have accumulated.

5. Keeping the tank off the base of the machine, simply remove the floor nozzle by turning the locking keys (see image for location) to the unlock position and lift up. Rinse the floor nozzle at the faucet.
6. Any loose hair or debris can be pulled from the Brush Rolls and thrown away. For the most thorough clean before storage, follow directions below for removal and replacement of the Brush Rolls and belts.
7. Replace nozzle by lining up the locking keys with their slots and placing the nozzle and end caps back onto the foot of the machine. Secure into place by turning the locking keys to the lock position.
8. To clean attachments that may have been used, remove from hose and rinse under clean, running water. Dry and replace attachment in the hose wrap. Clean the hose by suctioning clean water from the tap. Before replacing, lift end of hose and stretch out to ensure all water is cleared from hose.
9. To clean the suction diverter, remove the two screws on the back of the diverter housing. Take the diverter housing to a sink and rinse it with water. Take care to remove any debris that may build up and cause a clog. Replace the diverter housing and the two screws.
10. After carpet is dry, vacuum again to remove hair and fuzz.

Drive Belt Removal & Replacement

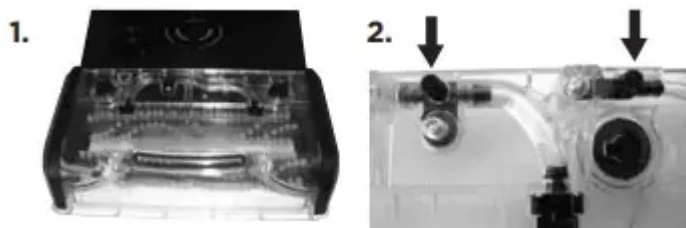


Occasional replacement of one or both belts may become necessary. If that is needed, please follow the instructions below.

1. Turn OFF the machine, and unplug it from the outlet.
2. Remove the 2-in-1 Water Tank. Set aside.
3. Remove the nozzle and endcaps following the instructions below.

4. Turn the machine on its side. **IMPORTANT:** cord side up.
5. Remove 1 silver screw from the pivot arm.
6. Remove pivot arm by gently lifting up.
7. Remove the drive belt and replace it by first attaching it to the small drive wheel, then attach it to the end of the inside brush.

Fluid Connection Point Filter Maintenance

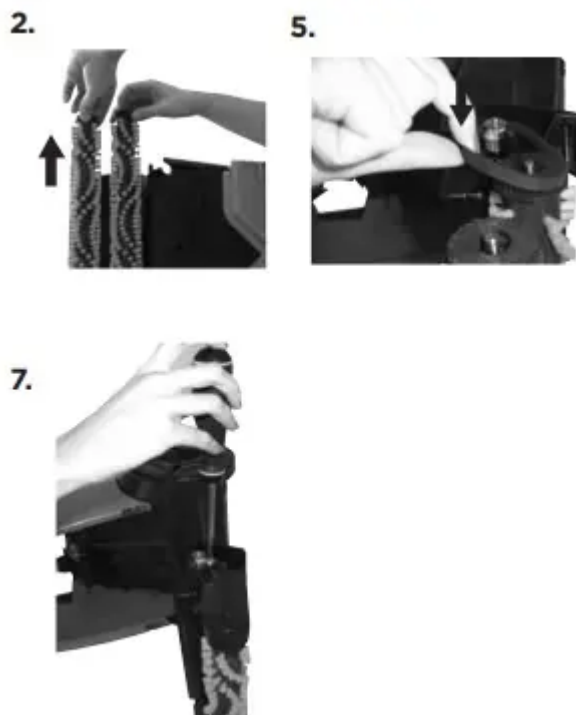


Periodic cleaning of the fluid connection point in the spray nozzle may be required.

1. To clean the fluid connection point, remove the nozzle and turn it over.
2. Clean the filter on the end of the fluid connection point with a small paperclip and re-attach the nozzle to the machine.

Brush Removal and Brush Belt Replacement

Brushes can be removed for cleaning or replacement as needed.



1. Follow drive belt removal instructions above.

2. Remove Brush Rolls by pulling them off of the metal rods. Be careful not to lose the small washer at each end of the Brush Rolls.
3. Replace the brush belt if necessary.
4. Place cleaned or new Brush Rolls back onto the rods. Make sure one washer is on each end of the rollers prior to sliding onto the rod. Be sure to let the rod slide through the bushing to insure proper fit.
5. Reattach the brush belt on the bottom to the cogs of the small roller brushes.
6. Replace the drive belt by following step 7 above.
7. Place pivot arm in place and screw in place using the silver screw.
8. Replace nozzle by lining up the locking keys with their slots and placing the nozzle back onto the foot of the machine. Secure into place by turning the locking keys to the lock position.

If you have any questions or are having trouble installing or replacing your belt(s) or brushes, please call BISSELL® Consumer Care.

Troubleshooting

Reduced spray or no spray

- 2-in-1 Water Tank may be empty.
 - Fill heavy-duty bladder with hot tap water.
- Tank may not be seated completely.
 - Turn power OFF. Remove and reseal tank.
- Pump may have lost prime.
 - Turn power OFF and then back ON. Wait one minute, then press trigger.

DirtLifter® PowerBrush does not turn

- The belt is off or broken.
 - Turn power OFF and unplug machine from outlet.
- Circuit breaker on machine may have tripped.
 - Turn the machine OFF and unplug from outlet. Check to see if foreign object is caught in Brush Roll. Remove object. Plug machine in to reset circuit breaker.

Cleaner not picking up solution

- 2-in-1 Tank may not be seated properly.
 - Pick up and reseal the tank.

- Tank may not be assembled properly.
 - Make sure the tank latches on both sides of the tank are latched properly. To make sure they are both latched properly, pick the tank up by its handle.
- 2-in-1 Water Tank is empty.
 - Check fluid levels in heavy-duty bladder.
- 2-in-1 Water Tank has picked up maximum dirty water and red float door has closed.
 - Empty tank. Refill heavy-duty bladder with clean hot tap water and replace.
- Red float "door" in the tank may have closed as a result of bumping object or moving machine back and forth too quickly.
 - Turn the machine OFF , allowing red float door to release an into the open position. Turn machine back ON to continue cleaning. Be sure your forward and backward strokes are done at a slower pace.
- Red lint screen near air duct is dirty.
 - Follow cleaning instructions

Warning

This content is compiled from multiple sources and is provided for reference purposes only. It may not be complete or fully applicable to all situations. If you are unable to resolve your issue, please contact the product manufacturer or an authorized service provider for official support.