

OPERATION

1 Clip the PKPC235 securely inside any deep heat-proof container without touching the very bottom.

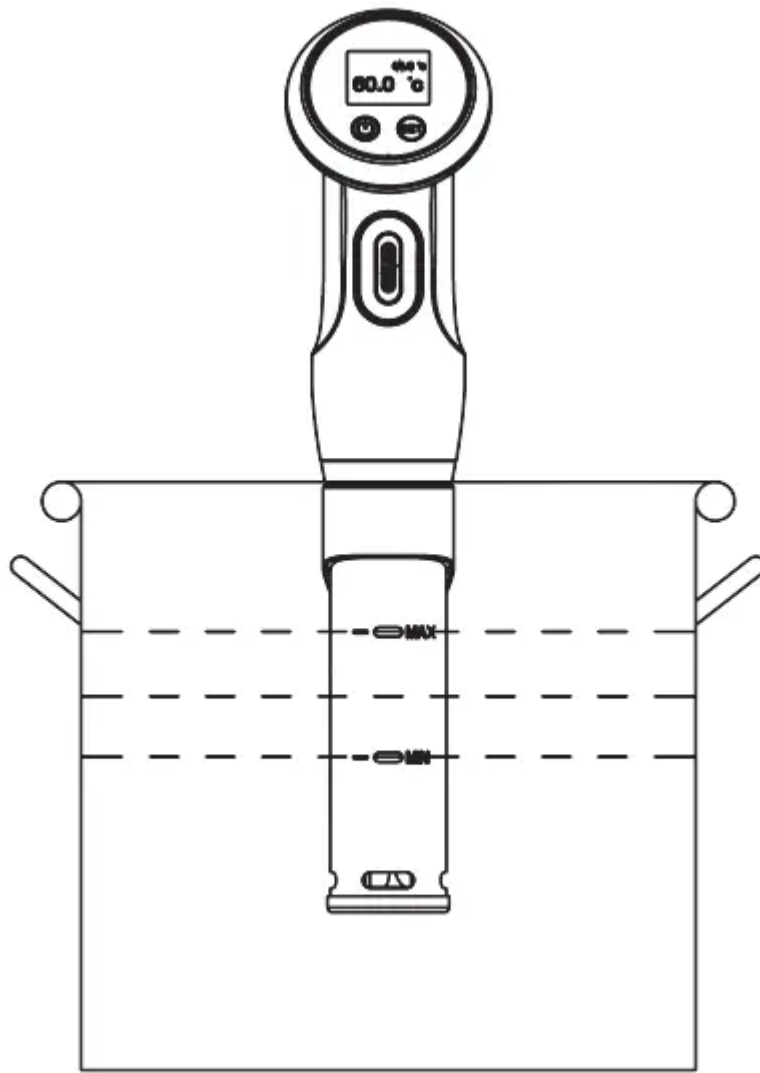
2 Fill the container with water, check the water level indicator on the PKPC235, the water level






should be between the min and max (the suitable water level to work) indicator on the front of the circulator. As the water level will rise when you add food to the container, so don't fill it up too high.


NOTE: As the water temperature increase, the water will begin to evaporate. The PKPC235 circulator is equipped with an alarm which indicate a low water level, if the water level goes below the min mark, the circulator will shut off.


Water level between max and min, but the Max is the most suitable level to work.



3. Connect the power plug, and you will hear a beep then appliance will switches off. Then press the power button  on the screen hold it for three seconds. The screen will switch on; the current temperature is flashing (second line). The first line on the right side of display shows the cooking temperature, the third line on left side of the display shows the timer. Press the  button to set

the Timer. When you press SET initially, the timer is set to 'Hour'. You can use  up and down to increase or decrease the hour (00-99 hours). Press on SET button for second time, and the timer

is set to 'MINUTES'. You can use  up and down to increase or decrease the minute (00-59 minutes). The third line on the right side for of display shows the work time. Press the SET button

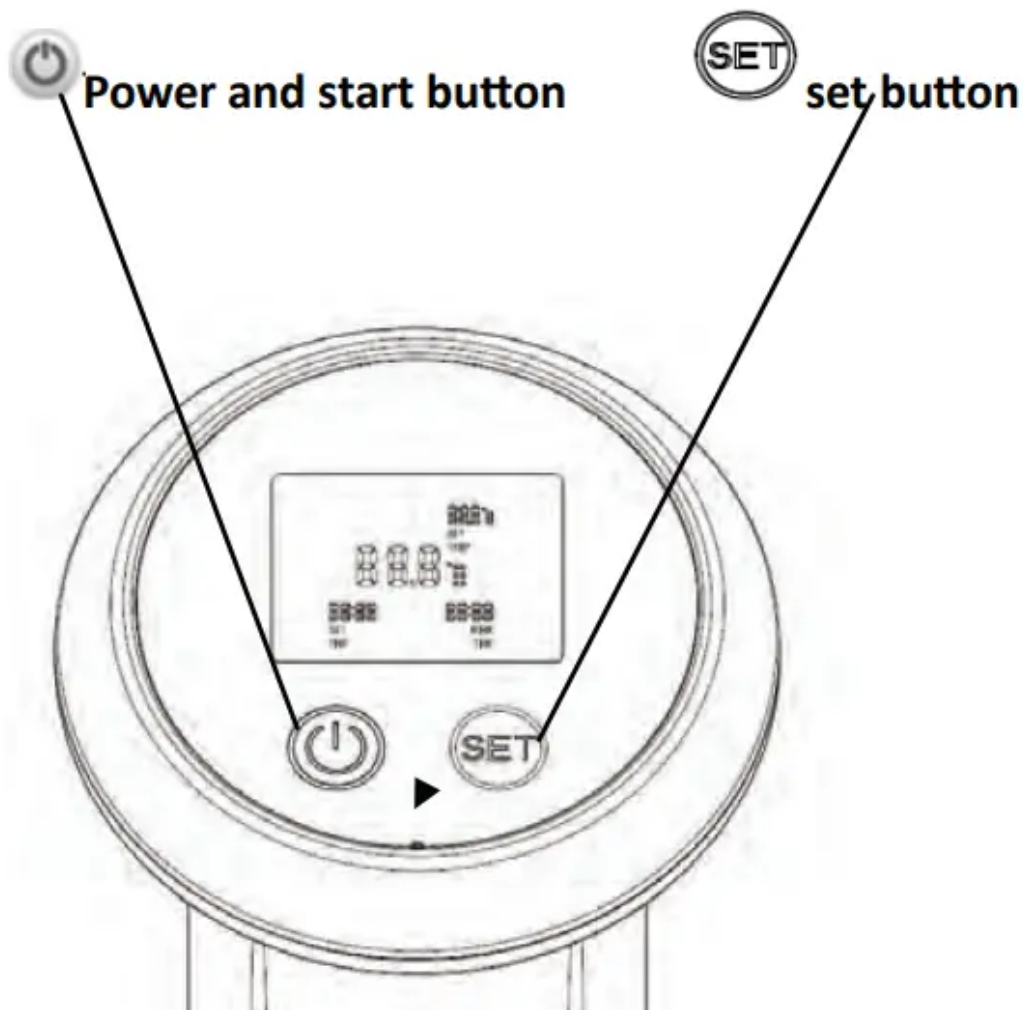
for third time, the work time for Hour will flash, you can use  up and down to increase or

decrease the hour (00-99hours). Press the set button for fourth time, the work time for MINUTES



will flash. You can use up and down to increase or decrease the minute (00-59 minutes).

Press the set button again, All timers and work time will stop flashing. Do not operate for ten seconds. When setting is finished, press the power button. The timer will start after the beep. The appliance will start to heat after the beep when 00:00 is reached. Follow the work time set to counter clockwise, the appliance will beep and stop heating when the final worktime is reached. Press the power button and set button at the same time to change the temperature degree by Celsius or Fahrenheit. If current water temperature is flashing, that means it is on standby mode.





4. Timer setting will not flash when you press the set button while the appliance is working. During operation, press set button, work time will flash, you could set work time and the appliance will work normally during this setting.

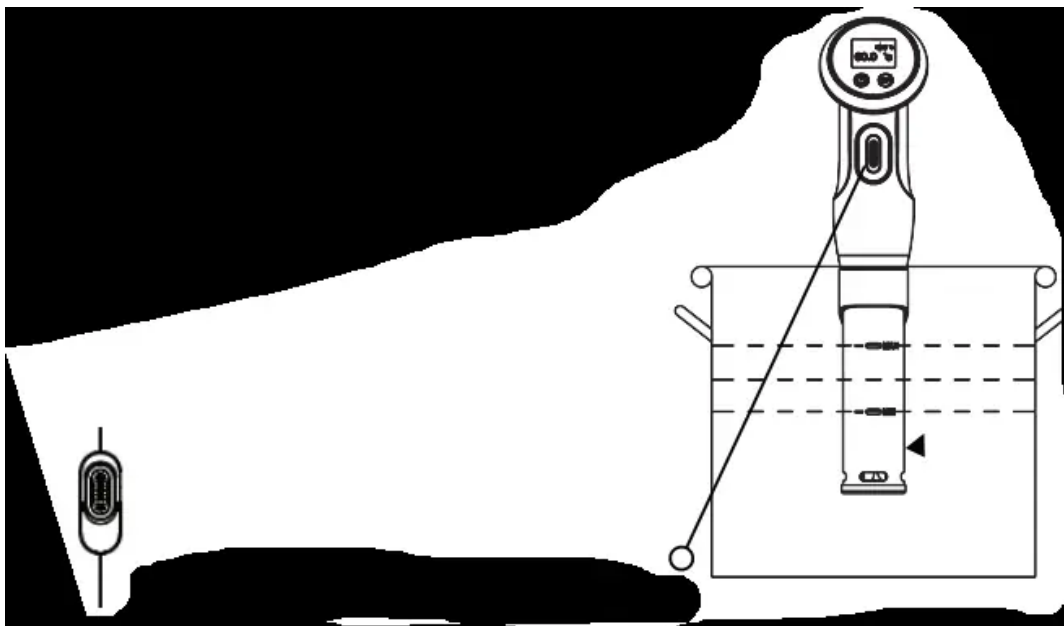


5. Rotating the wheel to set the temperature. Rotating the wheel up and down to increase or decrease the setting temperature. Maximum temperature setting is 95°C or 203°F.

6. Cook your food. Press the power button and the current water temperature will stop flashing then begin heating and circulating the water. Once the water has reached the set temperature, the alarm will beep four times to indicate that you can now immerse your sealed bag of ingredients ready for cooking. The alarm will beep again when water temperature becomes 2 degree lower than set temperature. This will keep food warm until you want to eat.

7. Turn the appliance off. Appliance should be switched off when cooking is done and when it is not in use. Press the power button for (3) seconds.

8. Press power button  to stop operation. Current temperature will flash. Press the power button  for three seconds and the appliance will switch OFF.



Knob adjust the temperature

CLEANING

With frequent use, descaling should be done every month or as needed.

1. Put the appliance in a pot and fill the pot with water to the Max" level indicated on appliance.
2. Set the appliance temperature to 70°C or 158°F.
3. Add 5g of citric acid powder (Food grade) per liter of water used.
4. Allow the water to circulate for 20 minutes after 70°C or 158°F is reached.
5. Turn off and unplug the appliance.
6. When appliance is cool, rinse the bottom in the cold water and dry before storage.

TROUBLESHOOTING

The PKPC235 will not turn on:

- Make sure that the appliance is properly plugged into a power outlet
- Check the power cord for tears and frays. Do not use the appliance if the power cord is damaged.
- Make sure the power button is on. The LCD display screen is showing the information.

The LCD display screen reads error code:

- E01: NTC Open Circuit. Temperature below 0 degree.
- Turn off the appliance and restart.
- E02: NTC Short Circuit. Temperature over 99 degrees.
- Turn off the appliance and restart.
- E03: The appliance will alarm when the water level drops below the MIN water level.
- Adjust the appliance to the right water level and appliance will work again normally.
- E04: The appliance will alarm when the water level over the MAX water level.
- Adjust the appliance to the right water level and appliance will work again normally.
- E05: Wrong with motor, please contact with customer support.

IMPORTANT SAFEGUARDS

1. Before using the appliance, read these instructions and illustrations carefully.
2. Keep these instructions for future reference.
3. Check if the voltage indicated on the appliance corresponds to the local main power plug before you connect the appliance.
4. Never use any accessories or parts from other manufactures. The warranty will become invalid if such accessories or parts have been used.
5. Do not use appliance if you noticed damaged parts or cords, if the appliance malfunctions or has been damaged. Return appliance to the nearest authorized service facility for examination, repair or adjustment.
6. Thoroughly clean the parts that will come into contact with food before you use the appliance for the first time.
7. Don't use the appliance if it has been damaged. You should contact an approved service centre.
8. This appliance is not recommended for children. Keep the appliance and its cord out of reach of children.
9. Never let the appliance run unattended.
10. Unplug the appliance before detaching and install any accessory.
11. Unplug the appliance immediately after use.

12. Unplug the appliance before changing accessories or approaching parts which move in use.
13. Appliances can be used by persons with reduced physical, sensory or mental capabilities or lack of experience and knowledge if they have been given supervision or instruction concerning use of the appliance in a safe way and if they understand the hazards involved.
14. This appliance is intended to be used in household and similar applications. Do not use outdoors.
15. Children shall not play with the appliance.
16. Do not touch hot surface and water. Use handles or knobs.
17. To protect against electrical shock do not immerse cord plugs in water or other liquid. Do not immerse beyond the "MAX"
18. Do not use an extension cord with circulator, use grounded power sources only.
19. To avoid the possibility of personal injury, always unplug the circulator from the electrical outlet before handling or cleaning
20. Do not let cord hang over edge of table or counter, or touch hot surfaces.
21. Do not place on or near a hot gas or electric burner, or in a heated oven.
22. Operate appliance in water only. Keep the water level between the "Min" and "Max" levels indicated.
23. Keep appliance dry. Never operate appliance unless the water level is between the indicated "Min" and "Max" levels. Only the heater and circulator portion should be underwater: Do not immerse the appliance cord, power box, or upper portion of appliance into water. If appliance or any of its parts become submerged to water, unplug appliance immediately and contact us.
24. Remember circulated water can be very hot. Use a trivet to protect your countertop from any container being used with appliance. Use tongs to reach anything inside the water bath. Extreme caution must be used when moving containers of hot water.
25. Extreme caution must be used when moving an appliance containing hot oil or other hot liquids.
26. To disconnect, turn any control to "off", then remove plug from wall outlet.
27. **Save these Instructions.**

Warning

This content is compiled from multiple sources and is provided for reference purposes only. It may not be complete or fully applicable to all situations. If you are unable to resolve your issue, please contact the product manufacturer or an authorized service provider for official support.

