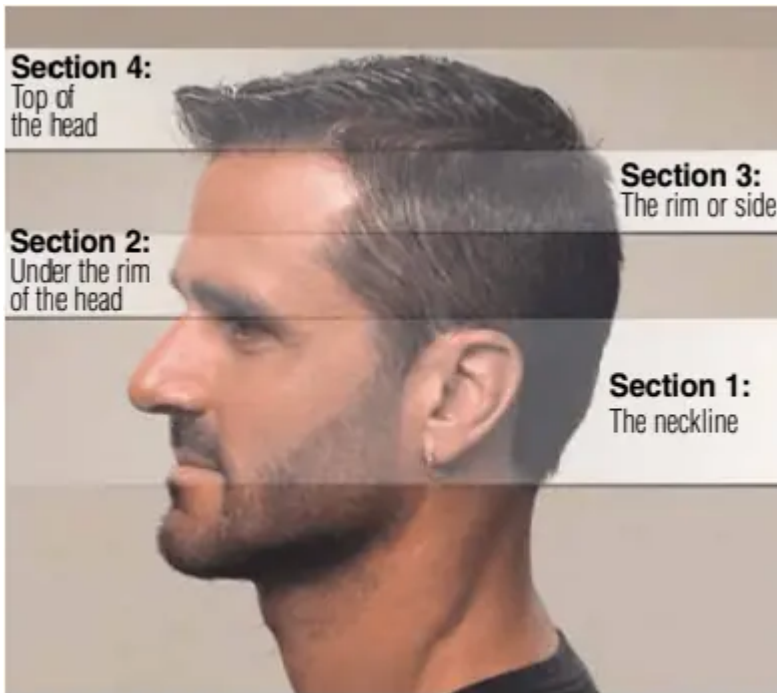


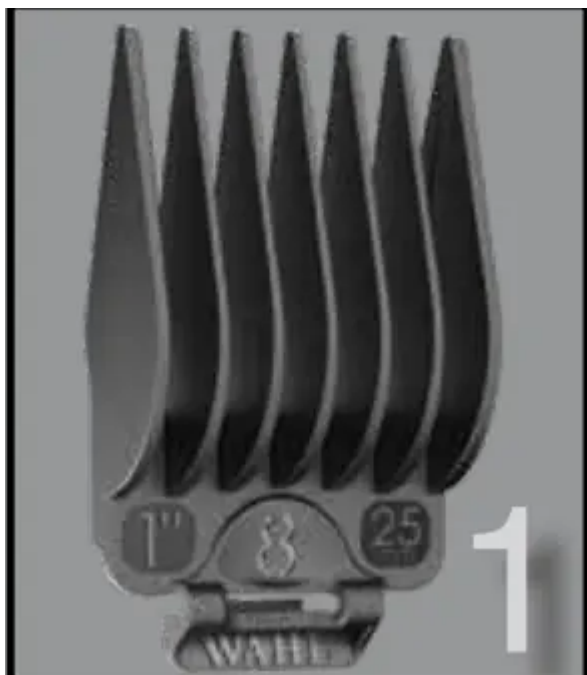
TIPS & TECHNIQUES

- When you cut your hair, you should visualize the head as if it were divided into four sections. Image below shows the different sections. Using proper techniques when moving from one section to the next will help you blend the sections together for professional looking results.

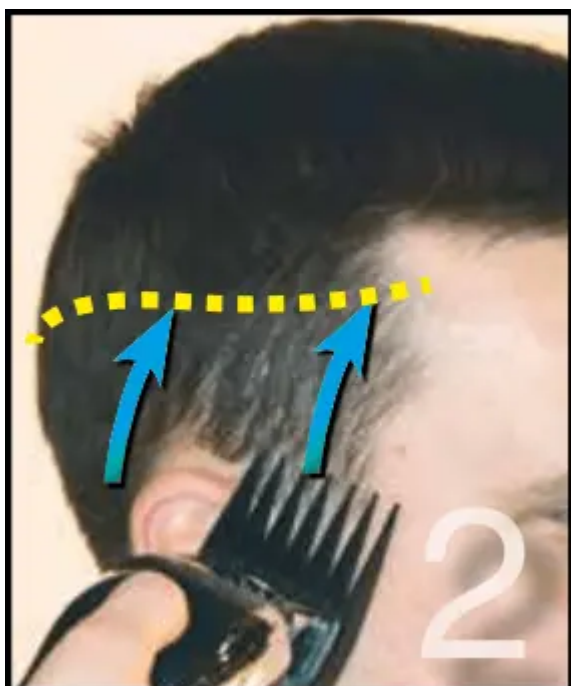


- The first time you cut hair, cut only a small amount of hair until you become accustomed to the length of hair each attachment guard provides.
- For best results, hair should be dry before using clipper.
- For best results, when cutting hair, go through hair at a slow, even speed. Don't force the clipper through the hair.
- For best results, go through the hair against the direction of your hair's growth, so you can catch more hair with the guard.
- The blades on your new clipper should be oiled every few haircuts.

STEP-BY-STEP GUIDE FOR CUTTING HAIR



1. Comb hair and remove tangles. Add the largest attachment guard to the clipper.



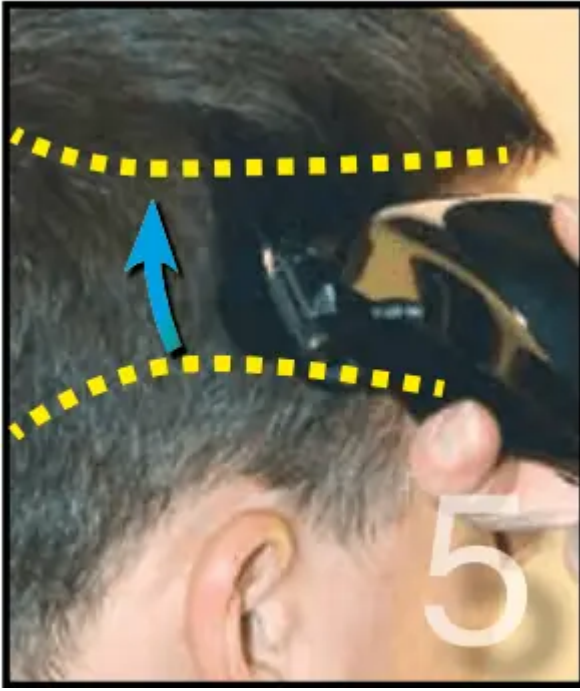
2. Start at hairline on side of head and cut up to middle of head. Note: If cut hair is too long, repeat with next smaller guard.



3. Continue around head repeating step 2.



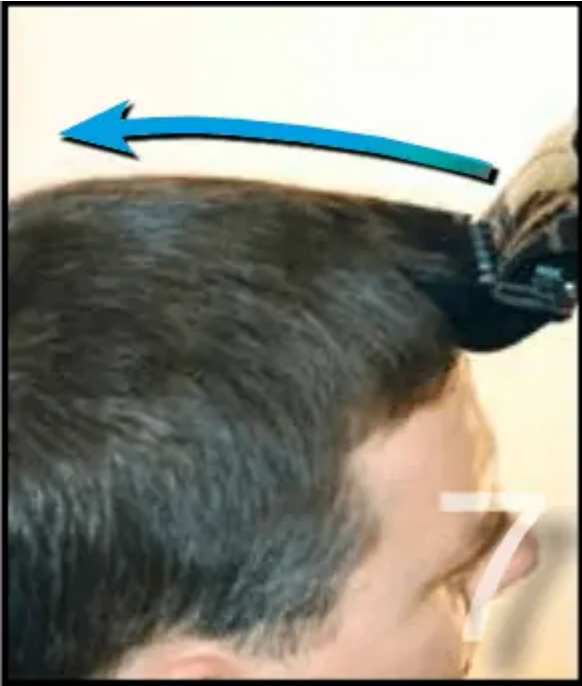
4. You are now ready to cut the middle portion of the hair



5. Use the attachment guard with the next highest number than in step 3. Example: If you used a #6 guard in step 3, select guard #7.



6. Continue cutting around middle portion of head as in steps 2 and 3.



7. For cutting top of head, use the attachment guard with the next highest number than in step 6. Start at front bang area.



8. Cut across top of head. Comb hair on entire head to assess if further cutting is necessary

BLENDING

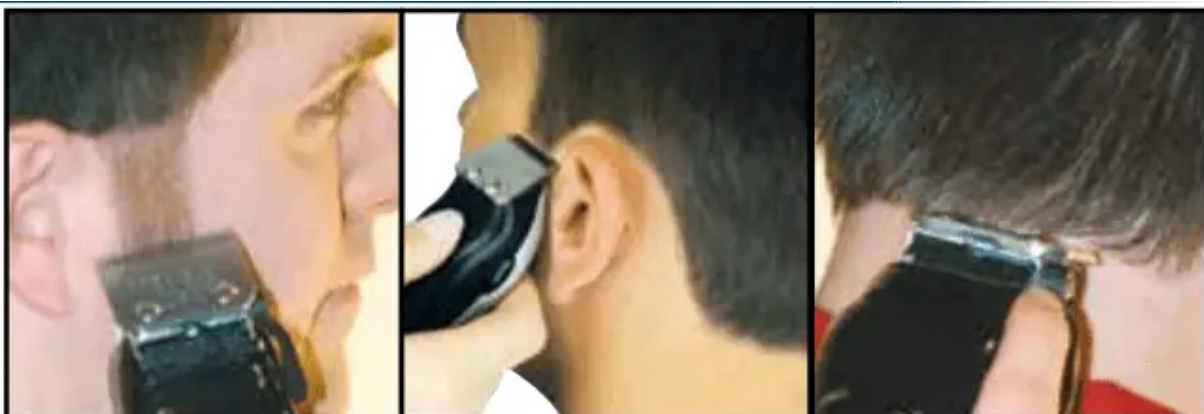
- When you want to blend from one section to the next, you will need to practice moving the clipper in an upward rocking motion. This motion will leave the hair slightly longer where the clipper pulls away from the scalp, enabling you to blend between the sections

and achieve a smooth transition from one length of hair to the next. This technique will enhance the appearance of your haircuts.



1. Blend out any cut lines. Lines may form where you change guard sizes. Use the same guard used in step 3
2. Using a rocking motion, blend out the middle cut line.
3. Using the guard used in step 8 repeat blending the top outline as needed.

DETAILING / OUTLINING



1. No attachments needed. Start with the sideburns.
2. Continue around ear as shown.
3. Trim neckline as shown

Use clipper or battery trimmer (not all kits include a trimmer).

CLIPPER MAINTENANCE EARS

CLEANING:

- To remove hair from between the blades, use the cleaning brush provided. **DO NOT USE WATER TO CLEAN THE BLADES.** For best results, after brush cleaning the blades, add Wahl clipper oil to the blades
- **OIL:** The blades on your new clipper should be oiled every few haircuts. For best results, place three drops on front of each blade and one drop on each side of the blade as shown. Use only Wahl Clipper oil (a small bottle is included in this kit, additional oil can be purchased separately, see www.grooming.Wahl.com for details).
- **DO NOT USE HAIR OIL, GREASE, OR ANY OIL MIXED WITH KEROSENE OR ANY SOLVENT.**

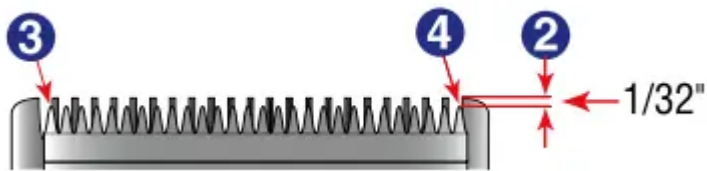


ALIGNING CLIPPER BLADES:

Your Wahl clipper blades were oiled and aligned before leaving our factory. Blades may need to be realigned if they have been bumped or removed for cleaning. To determine if realignment is necessary, compare your clipper blades with this sketch.

1. If your clipper has a taper lever, position the lever in the closest cut (up) position.
2. End of top blade teeth should be approximately 1/32-inch (.64 mm) back from bottom blade.
3. Extreme left-hand tooth of top blade must be covering or to the left of the first small tooth of bottom blade.
4. Extreme right-hand tooth of top blade must be touching the big tooth on the bottom blade.

If blade alignment is incorrect, add a few drops of Wahl Clipper Oil to the blades, turn clipper "ON" for a few moments, turn "OFF" and unplug. Loosen screws slightly and adjust. Tighten screws after blades are aligned. Other than blades, this clipper has no user-serviceable parts.



IF YOUR CLIPPER IS TOO NOISY:

(A) Oil blades as directed in previous section of this instruction booklet.

(B) You can reduce the “clatter sound” by adjusting the power screw. The power screw was adjusted for peak efficiency before leaving the factory. However, if voltage in your home is too high or low; the clipper power screw may need adjustment. **ADJUST POWER SCREW TO REDUCE CLIPPER NOISE (excessive clattering):**



1. Turn your clipper “ON”
2. Use the end of the cleaning brush or a screwdriver to turn power screw in a COUNTER CLOCKWISE direction until clatter goes away.

MAXIMUM POWER SETTING:

ADJUST POWER SCREW FOR MAXIMUM POWER SETTING:

1. Turn your clipper “ON”
2. Use the end of the cleaning brush or a screwdriver to turn power screw in a CLOCKWISE direction until you hear a clattering noise.
3. Then turn power screw in opposite direction (COUNTER CLOCKWISE) until clattering stops.

CORD:

- The cord should not be used to pull the clipper. Since freedom of movement needs to be maintained, care should be used to keep the cord untwisted and unobstructed.
- YOUR CLIPPER HAS A POLARIZED PLUG: To reduce the risk of electric shock, this appliance has a polarized plug (one plug blade is wider than the other). This plug fits in a polarized outlet only one way. In the event the plug doesn't fit fully in the outlet, reverse the plug. **DO NOT CHANGE THE PLUG IN ANY WAY.**

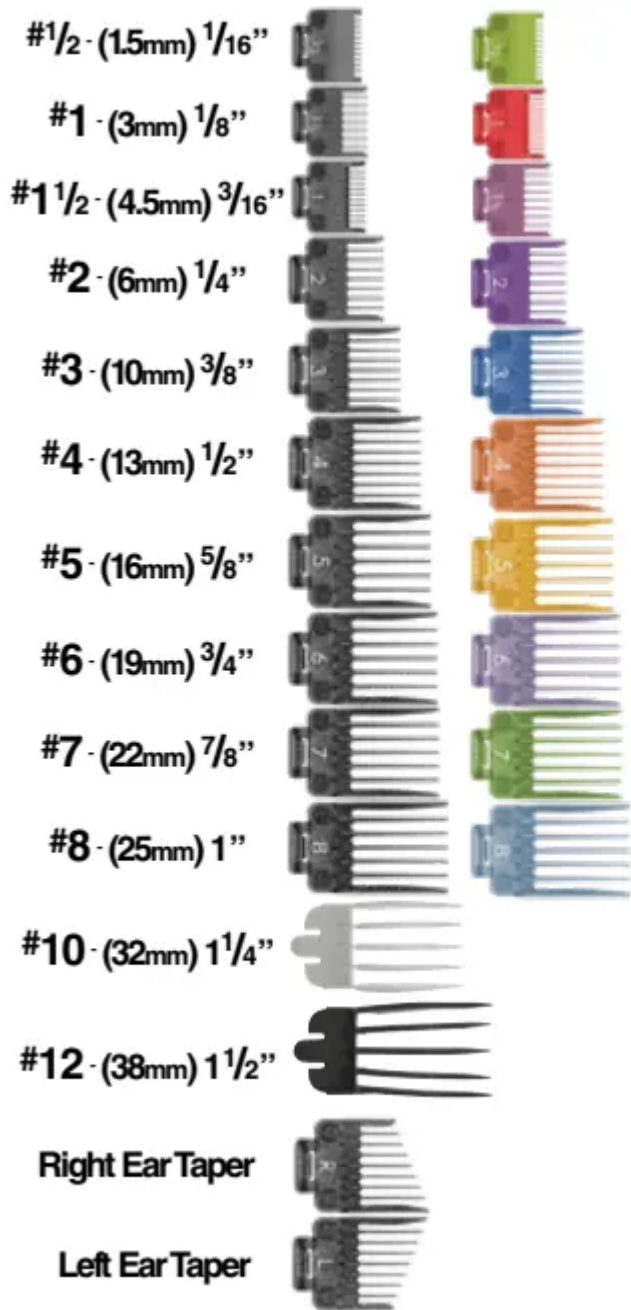
TAPER LEVER:



- The taper lever adds versatility to your clipper by allowing you to gradually change the closeness of your cut. (Up position = closest cut; Down position = longest cut). Should the blades become jammed with hair, move the taper lever up and down several times. This will help free up the blades.

EASY-TO-USE ATTACHMENT GUARDS

Some kits do not include all size Wahl guards. Some kits include colored guards.





- Attachment guards help you cut hair to a desired length by keeping the blades at a set distance from the skin helping ensure an even hair length. For reference, each guard is numbered and also lists the length the hair will be after being cut.
- Attachment guard sizes vary. Always start with a longer length guard (you can always use a shorter length guard if the length is not short enough).
- The first time you cut hair, cut only a small amount of hair until you become accustomed to the length of hair each attachment guard provides.

ADDING GUARDS: Pictured in fig A & fig B

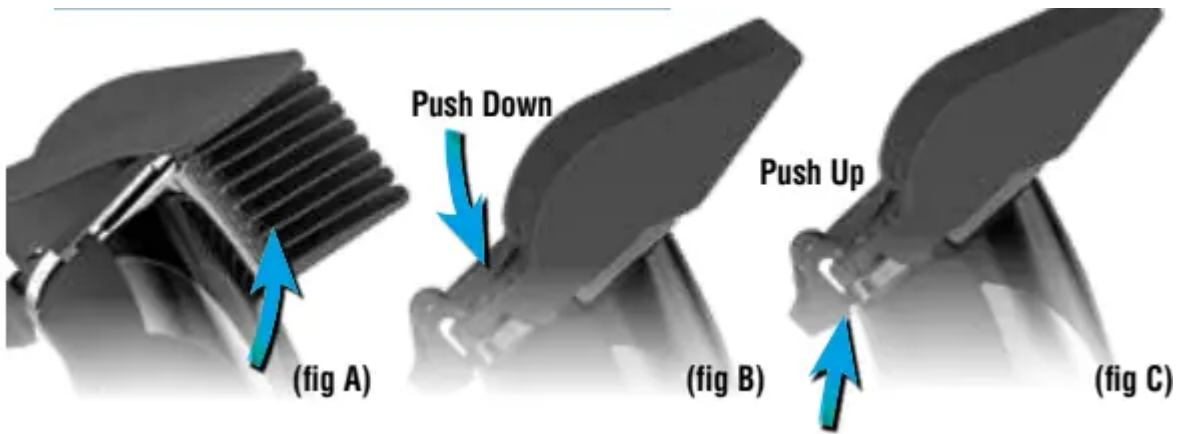
Before adding guards, make sure the on/off switch is turned to the “0” or “OFF” position.

1. While holding at a slight angle, place the attachment guard onto the clipper so the tips of the blade rests into the slots of the guard fingers. (fig A)
2. Using your thumb, push down on the guard, where the guard size number is located, until you hear a “SNAP”. (fig B)

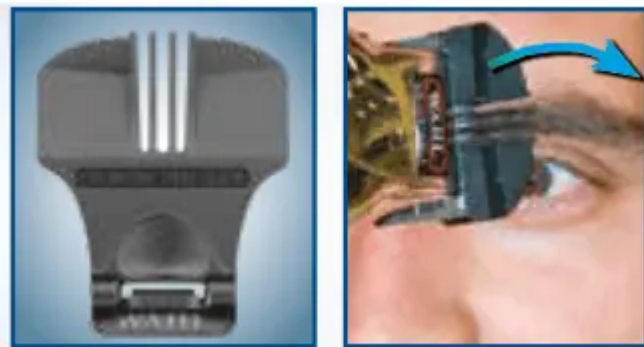
REMOVING GUARDS:

Pictured in fig C Before removing guards, make sure the on/off switch is turned to the “0” or “OFF” position.

1. While holding the top of attachment guard, place your thumb on the underside of the attachment guard tab. Push up on tab to remove guard from clipper. (fig C)



BROW TRIM GUARDS



1. Attach the brow trim guard to clipper
2. Starting from just above your nose, slowly guide the clipper to the outside of your face.
For shorter brow trim repeat steps 1 and 2 working from outside face to your nose.

NOTE: NOT ALL WAHL KITS INCLUDE BROW / EAR TRIM GUARDS

EAR TRIM GUARDS



1. Attach ear trim guard to clipper.
2. Hold the clipper at a 45-degree angle.
3. Use your finger to tilt ear forward away from hairline.
4. Slowly trim along the hair line from back to front. Avoid poking eyes.

EARS

To achieve a “tapered” cut around the ears, use the left and right tapered attachment guards

1. Attach the “R” RIGHT attachment guard to the clipper. fig. A) First, starting behind the RIGHT ear (so shorter portion of guard fingers are closest to the ear), move the clipper upward and around towards the front side of the ear. Repeat as needed. fig B) Second, starting on the front of the LEFT ear, (so shorter portion of guard fingers are closest to the ear), move the clipper upward and around towards the back side of the ear. Repeat as needed.



2. Repeat, except now using the “L” LEFT guard. Attach the “L” LEFT attachment guard to the clipper. fig. A) First, starting behind the LEFT ear (so shorter portion of guard fingers are closest to the ear), move the clipper upward and around towards the front side of the ear. Repeat as needed. fig. B) Second, starting on the front of the RIGHT ear, (so shorter portion of guard fingers are closest to the ear), move the clipper upward and around towards the back side of the ear. Repeat as needed.



YOUR NEW CLIPPER

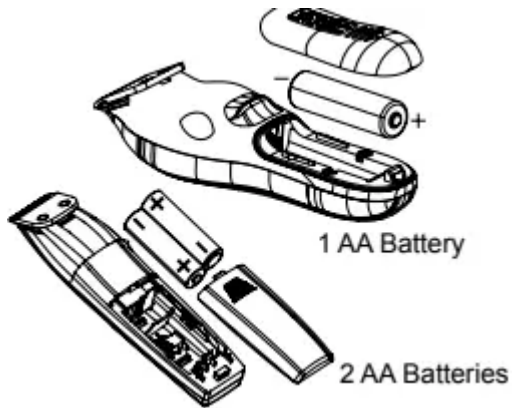


BATTERY TRIMMER INSTRUCTIONS

Select clipper kits include a battery trimmer, your kit may or may not include a trimmer

1. Remove battery cover from trimmer by pushing in and back on the plastic door in the direction of the arrow.
2. **IMPORTANT:** Be sure to insert the negative (-) end of each battery first, so that it depresses the spring at the top of the battery compartment. Then slide the positive (+) end into position. Do not allow the negative terminal clips to bend and cut the casing of the batteries. Use alkaline batteries with your Wahl trimmer. Alkaline batteries will provide the longest operating time before battery replacement is needed. Trimmer should run approximately three hours on alkaline batteries.
3. Replace battery cover to its original position.

USING TRIMMER/DETAILER:



1. Oil & clean blades as noted for clipper.
2. Move switch to "on" position to begin use.
3. See directions for detailing/outlining for best uses of battery trimmer.

Warning

This content is compiled from multiple sources and is provided for reference purposes only. It may not be complete or fully applicable to all situations. If you are unable to resolve your issue, please contact the product manufacturer or an authorized service provider for official support.