

### INSPECTION

We want your new speaker system to look as good as it did leaving the factory! Please check promptly for any transit damage. Carefully unpack your new speaker system and verify the components against the packing list. In extreme circumstances, items may have become damaged in transit. If any damage is discovered, notify the delivery service and dealer where the system was purchased. Make a request for inspection, and follow their instructions for evaluation. Be sure to keep the product's original shipping carton.

### REFERENCE SUBWOOFERS POSITIONING YOUR REFERENCE SUBWOOFER

Klipsch powered subwoofers are designed to reproduce deep bass and deliver the impact that makes your movies and music come alive. For optimum performance, place your subwoofer in a corner of the room on the same wall as your front channel speakers. (refer to Figure 1). Please note that room placement can have a dramatic effect on the performance of your powered subwoofer. Corner placement, as suggested above, will increase the amount of bass output, while placing the subwoofer along the middle of a wall, or out in the room will decrease the amount of bass output. Experiment with a number of different placement options and control settings to find the one that best suits your particular room and taste. When choosing your subwoofer's location, keep in mind that you will need to connect the subwoofer's built-in amplifier to an AC power outlet.

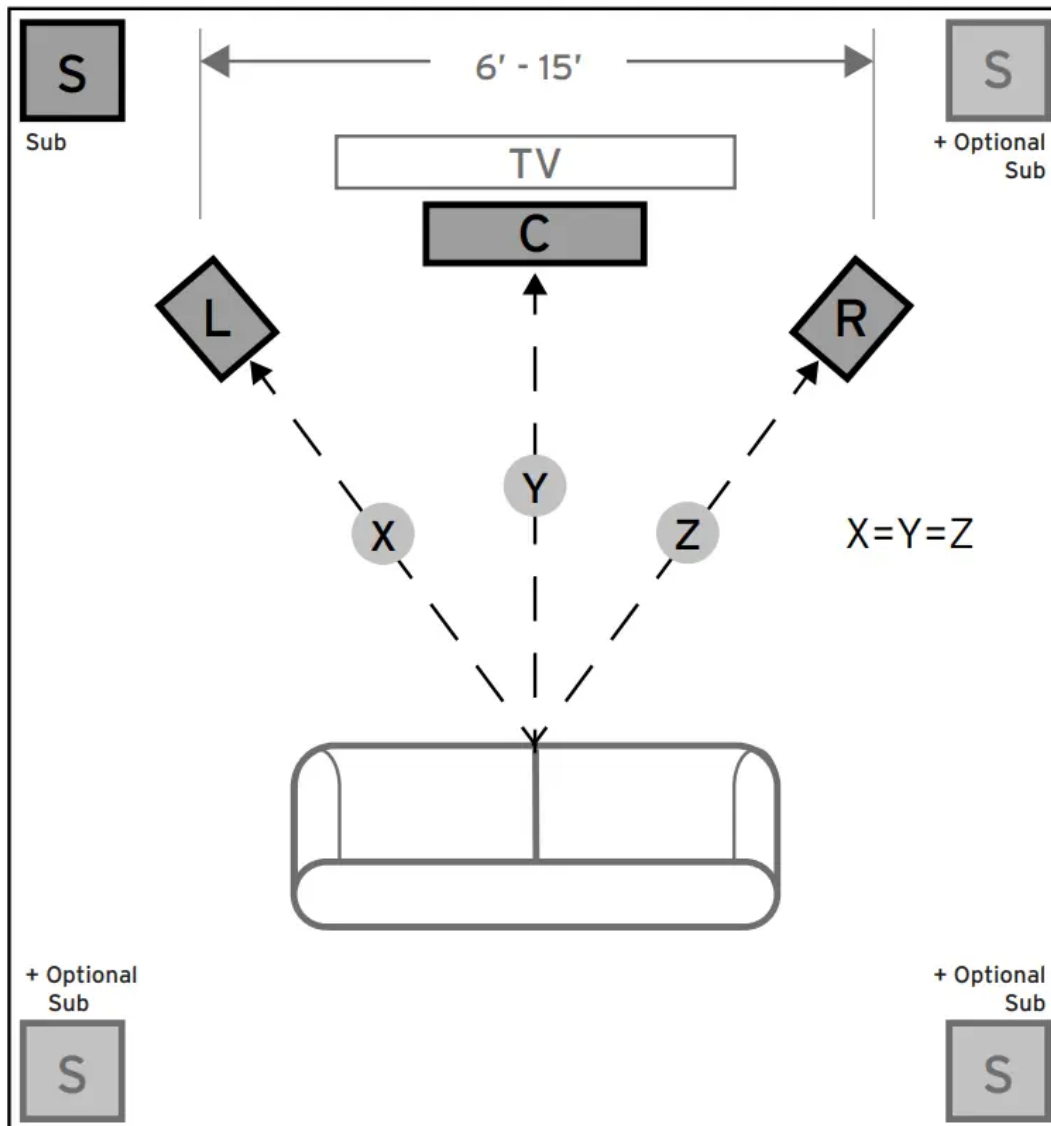


FIGURE 1 SPEAKER PLACEMENT IN LISTENING AREA

## CONNECTIONS AND CONTROLS

**CAUTION:** Ensure that the subwoofer is unplugged from the AC wall outlet before making any connections.

**"LINE IN" Connection** - Most of today's surround receivers (and pre-amplifiers) have a line level subwoofer output labeled Subwoofer

Pre Out, Sub Out, SW Out, etc. If you have this output, connect one end of a subwoofer cable to it and connect the other end of the cable into the subwoofer line input labeled LEFT/LFE. This connection allows the subwoofer to operate with both music and surround sound movies (refer to your receiver manual). In absence of a subwoofer output on your receiver, as an alternative hookup, you can connect

Left and Right channel Pre-Amp Outputs from your receiver (if provided) to the Left/LFE and Right input on the subwoofer.

**"LOWPASS" Control** - The crossover point chosen determines where low bass frequencies are "handed off" from the speakers to the subwoofer. If setting the crossover point in the receiver, turn the

Lowpass Filter knob on the subwoofer to the farthest point right (160Hz). Set the crossover point based on the size of the main left/ right speakers you are using in the system. As a general rule, for larger, floorstanding speakers, set the crossover point between 50Hz-90Hz. If using small bookshelf or "satellite" speakers for the mains, set the crossover point between 90Hz-150Hz. The smaller the speaker, the higher the setting until the bass frequencies blend well between the speakers and your subwoofer once your system is completely hooked up. If your receiver does not have a crossover point setting, set the Lowpass Filter on the subwoofer instead within the same recommended settings (see receiver manual for additional speaker setup info).

**Level** - If your subwoofer is connected to a Subwoofer Output of a surround receiver, first set the subwoofer volume level control in the receiver to the "half way" or "0 dB" position. Then increase the volume (or gain) of the subwoofer up until the subwoofer's volume level matches the output of your main speakers. After this setup is completed, the volume control on your system's main amplifier or pre-amplifier will be the volume control for both your subwoofer and speakers together. If your subwoofer is connected to the L/R PreAmp Outputs of a receiver there will be no subwoofer volume in that receiver to set before setting the subwoofer's gain control.

**"PHASE" 0/180** – This control is used to acoustically match the subwoofer's output to your main speakers. Select the position either 0 or 180° in which your subwoofer has more output at the listening position.

**Off/Auto/On** – When this switch is in the "AUTO" position, the subwoofer will automatically turn "on" when it senses a signal. It will automatically go into "standby mode" after 15-20 minutes with no signal. When the switch is set to the "On" position, the subwoofer will remain on until manually switched to another settings. When this switch is in the "OFF" position, the subwoofer will remain "off" until the switch is manually turned back to the "AUTO" or "ON" position.

**Power LED indicator** - Located on the front baffle, this LED indicates the operating status of the built-in amplifier. The LED will light green when the amplifier is on and receiving a signal. If the LED is dark and not lit, the amplifier is off. For more information on the controls mentioned in this manual and on bass management, see your dealer or visit [www.klipsch.com](http://www.klipsch.com)

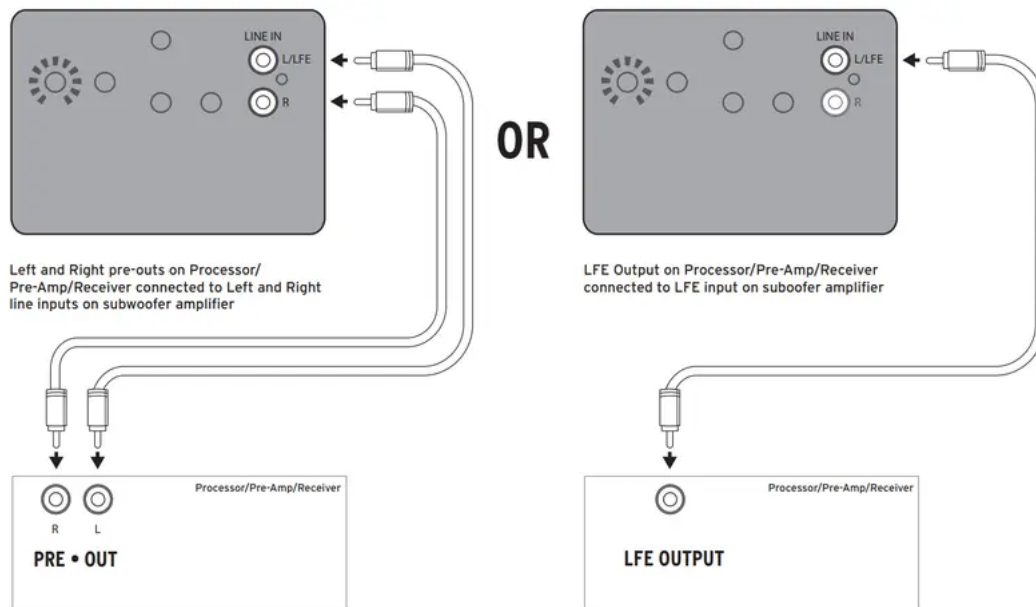


FIGURE 2 LINE LEVEL CONNECTIONS

## CARE AND CLEANING

Your subwoofer has a durable vinyl finish that should only require dry dusting or cleaning with a dry cloth. Avoid the use of abrasive or solvent-based cleaners and harsh detergents. The brush attachment of your vacuum should remove any dust from your subwoofer enclosure.

## PRODUCT REGISTRATION

Register your product online at [www.klipsch.com/register](http://www.klipsch.com/register)

- Keep up-to-date on new products and promotions.
- Your personal information will never be resold.
- This registration information is not used for warranty purposes.

## SPECIFICATIONS

### SPUN COPPER IMG WOOFER

Injection Molded Graphite (IMG) woofers are exceptionally light while being extremely rigid – providing remarkable low frequency response, with minimal cone breakup and distortion.

### ALL-DIGITAL AMPLIFIER

The built-in all-digital amplifier delivers ample power with high efficiency and true-to-source accuracy in reproduction.

### FRONT-FIRING DRIVER

The high performance driver provides deep bass and placement flexibility.

### **LOW PASS CROSSOVER AND PHASE CONTROL**

Allows you to blend the subwoofer's low-frequency tones with other Klipsch speakers as well as establish the ideal level of bass.

### **LINE/LFE INPUTS**

Ensures compatibility with old and new receivers.

### **MDF CABINETS WITH BRUSHED POLYMER VENEER FINISH**

Contemporary aesthetic with absolute durability that results in a seamless integration into any décor.

### **FRONT-MOUNTED LED POWER INDICATOR**

Let's you know when the system is on or off.

### **STRONG, FLEXIBLE, REMOVABLE GRILLE**

Adds a rich, refined look that is acoustically transparent.

FREQUENCY RESPONSE	29Hz-120Hz +/-3dB
MAXIMUM ACOUSTIC OUTPUT	116dB
AMPLIFIER	All digital
AMPLIFIER POWER	200W / 400W
DRIVE COMPONENTS	12" (30.5 cm) high excursion, IMG, front-firing woofer
ENCLOSURE MATERIAL	MDF
ENCLOSURE TYPE	Bass Reflex
INPUTS Line level/LFE	RCA jacks
HEIGHT	16" / 40.64 cm (16.5" with feet)
WIDTH	14" / 35.56 cm
DEPTH	18.5" / 47 cm (19.2" with grille)
WEIGHT	33 lbs (15 kg)
FINISH	Brushed Black Polymer Veneer
BUILT FROM	2014
FEATURES	Volume, Lowpass, Phase, Auto Power
PHASE	Switchable 0-180 degrees

### Warning

This content is compiled from multiple sources and is provided for reference purposes only. It may not be complete or fully applicable to all situations. If you are unable to resolve your issue, please contact the product manufacturer or an authorized service provider for official support.