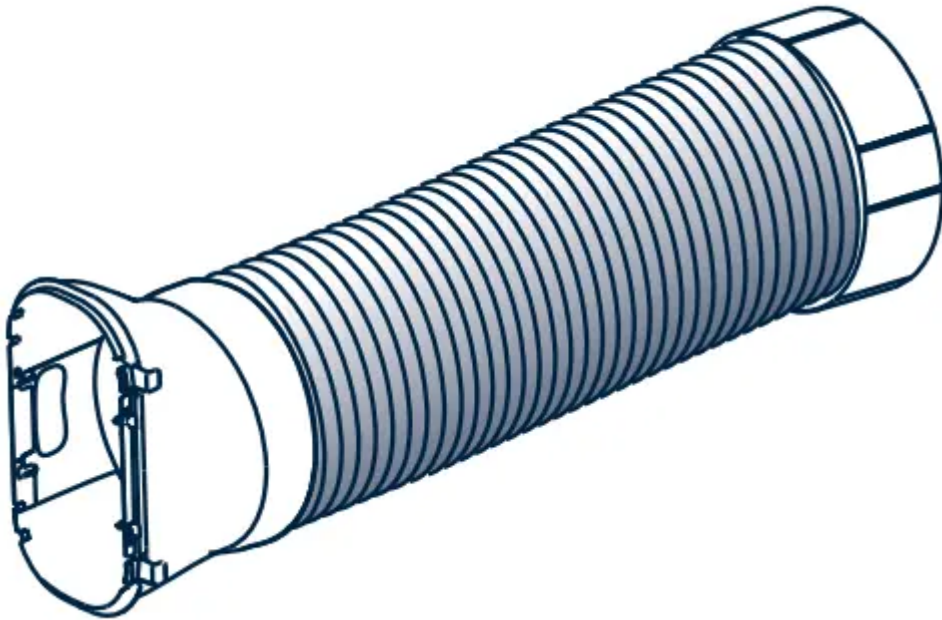
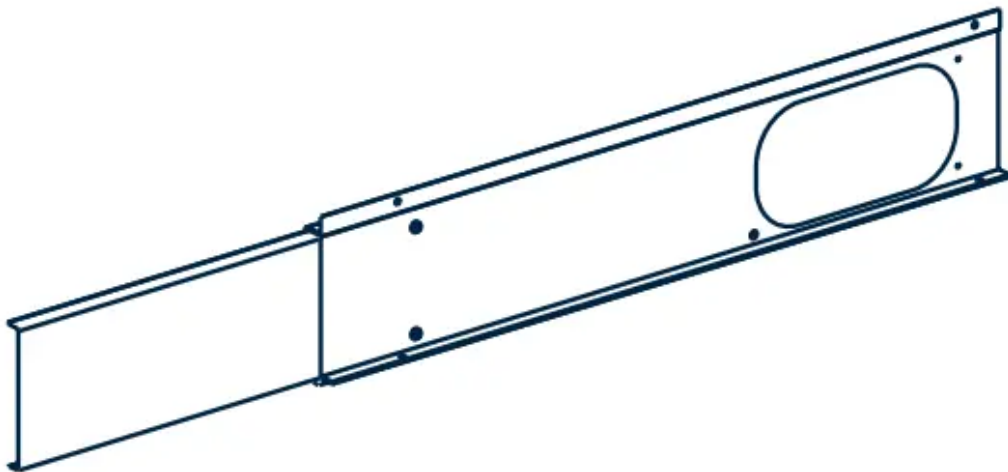


DESCRIPTION OF THE ACCESSORIES

1. Air exhaust hose



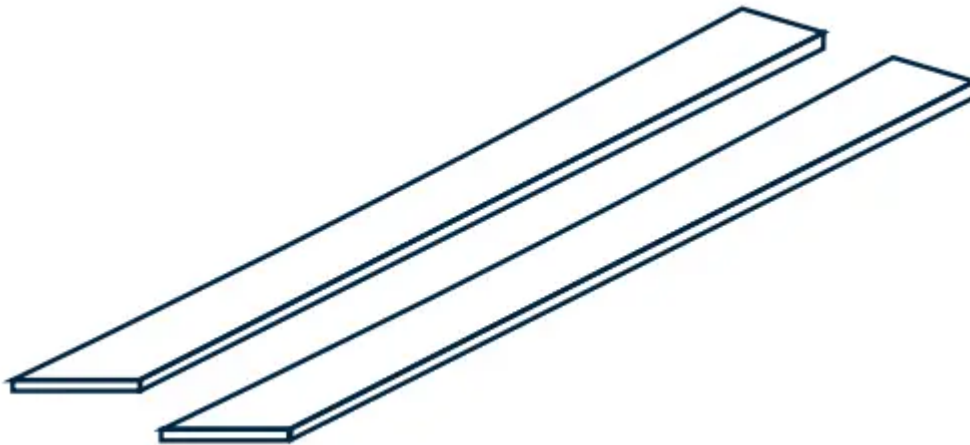
2. Extendable window bracket with screws



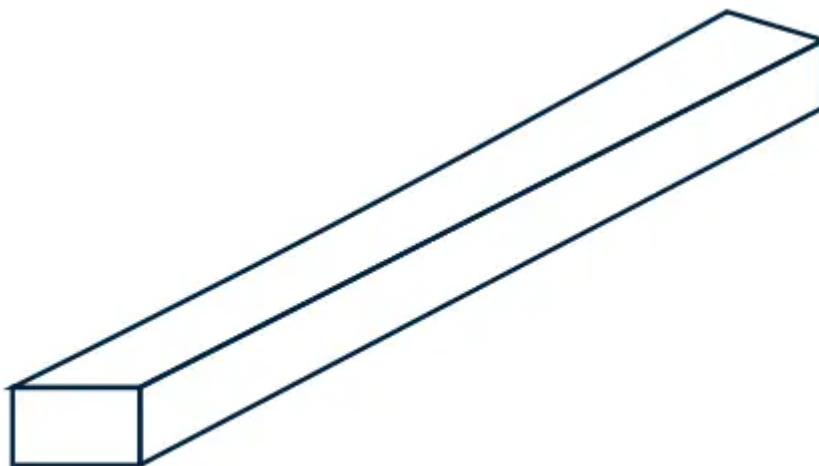
3. Drainage hose



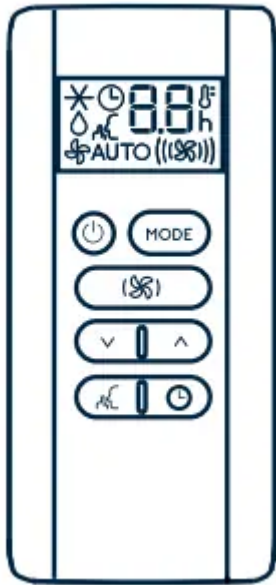
4. Self adhesive strips foam (2 pieces)



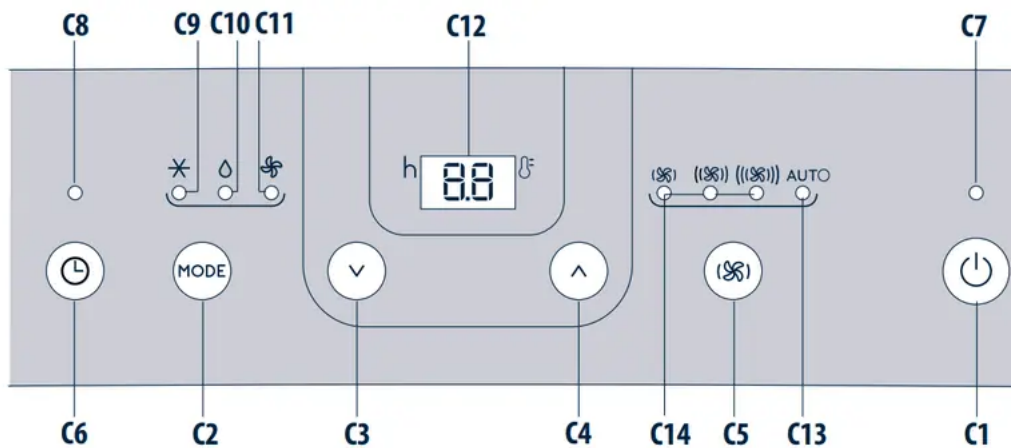
5. Non adhesive strip foam



6. Remote control



DESCRIPTION OF THE CONTROL PANEL



C1 - ON/STAND-BY (on/off) button

C2 - Mode selection key (air conditioning, dehumidifying, fan)

C3 - Decrease key

C4 - Increase key

C5 - Ventilation speed selection key

C6 - Timer button

C7 - Stand-by indicator

C8 - Timer indicator

C9 - Air conditioning mode indicator

C10 - Dehumidifying mode indicator

C11 - Fan mode indicator

C12 - Set temperature values, programmed on / off timer

C13 - Auto ventilation speed indicator

C14 - Ventilation speed indicator (min, med, max)

SELECT THE TEMPERATURE SCALE

The temperature can be displayed in °C or °F. To change the temperature unit of measure press both the decrease ∇ (C3) and increase \wedge (C4) keys for about 3 seconds.

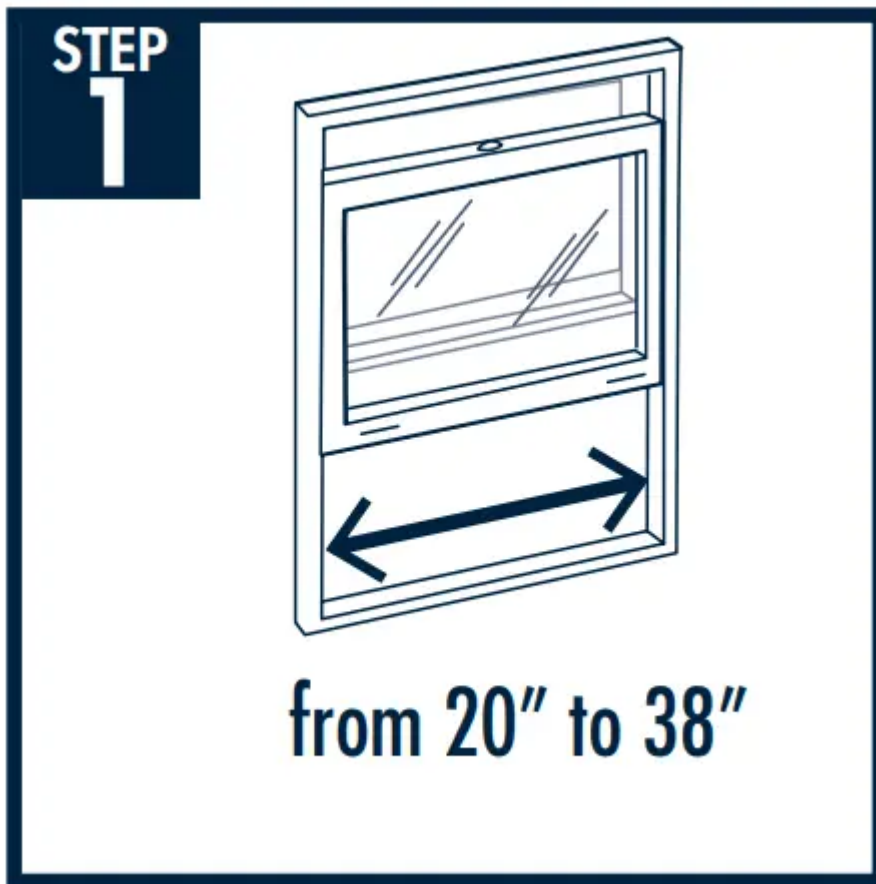
EASY SET UP - ALL PARTS INCLUDED

Step 1- Placement

Select the best window for the air conditioner.

You will need some clearance for the hose and a convenient 3 hole grounded electrical outlet within 5 ½ feet. Choose a window that is centrally located so it is best positioned to cool the entire room.

Do not install on same electrical circuit as other major appliances.



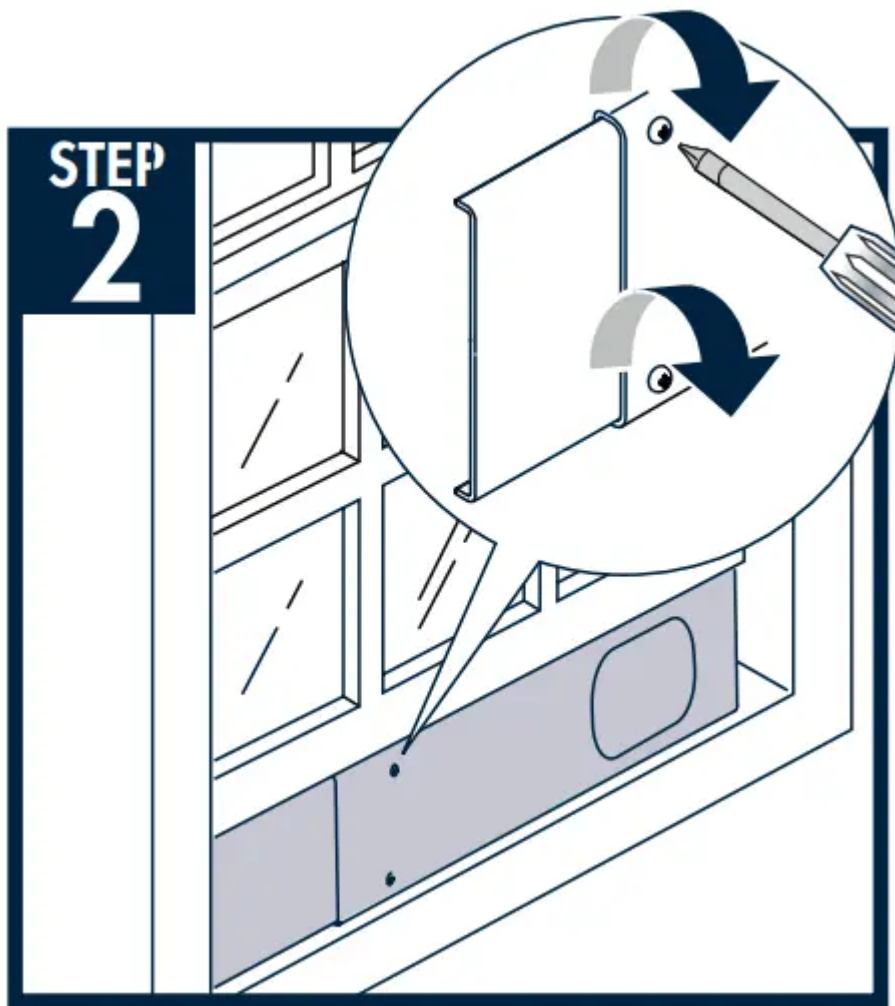
Step 2 - Window kit

Take the window kit (3) and install in selected window.

Position the extendable window bracket on the window sill and fully extend the extendable window bracket inside the window frame.

Adjust the extendable window bracket and then fix the length with two screws (If the extendable window bracket is too large, it is possible to cut the plastic using a saw).

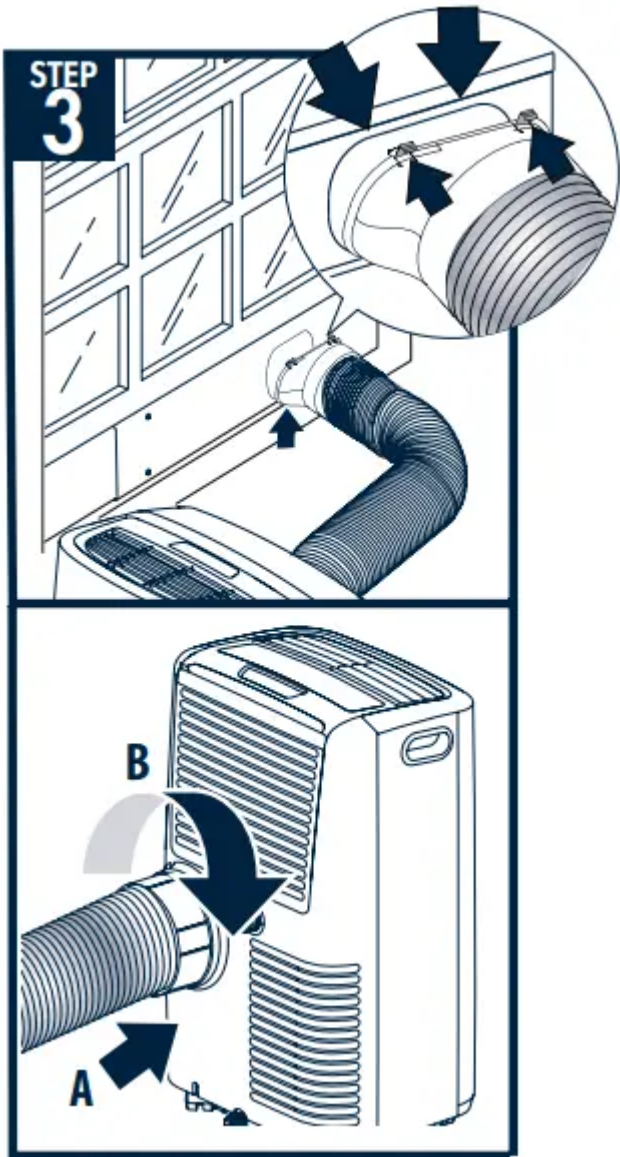
NOTE: You will need a Philips head screwdriver for this step



Step 3 - Hose assembly

A - Hook the adapter for extendable window to the window bracket as shown.

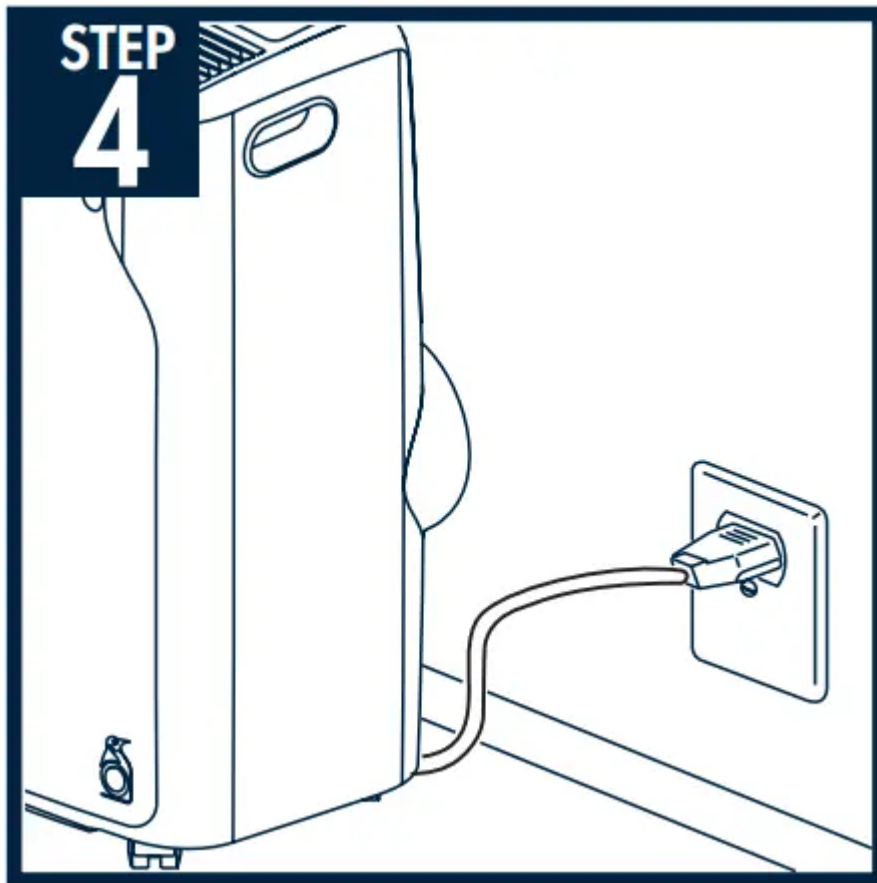
B - Fit the air exhaust hose in the relevant housing located on the rear side of the appliance



Step 4- Plug the unit in

Be sure it is a 3 hole grounded outlet within 5 ½ feet of air conditioner.





Step 5-Turn unit on and set to your desired temperature

See user manual to be able to use all functions and features of this product.



IMPORTANT NOTES TO PREVENT LEAKS:

1. Make sure air conditioner is on a level surface to prevent any condensate leakage.
2. Before you move the unit, unplug the unit from the wall, and drain any condensation from the drainage hose located on the back of the unit into container. If you are in an especially humid region, you should do this regularly to prevent potential leaking. Make sure drain cap is back on tightly before resuming use.

Warning

This content is compiled from multiple sources and is provided for reference purposes only. It may not be complete or fully applicable to all situations. If you are unable to resolve your issue, please contact the product manufacturer or an authorized service provider for official support.