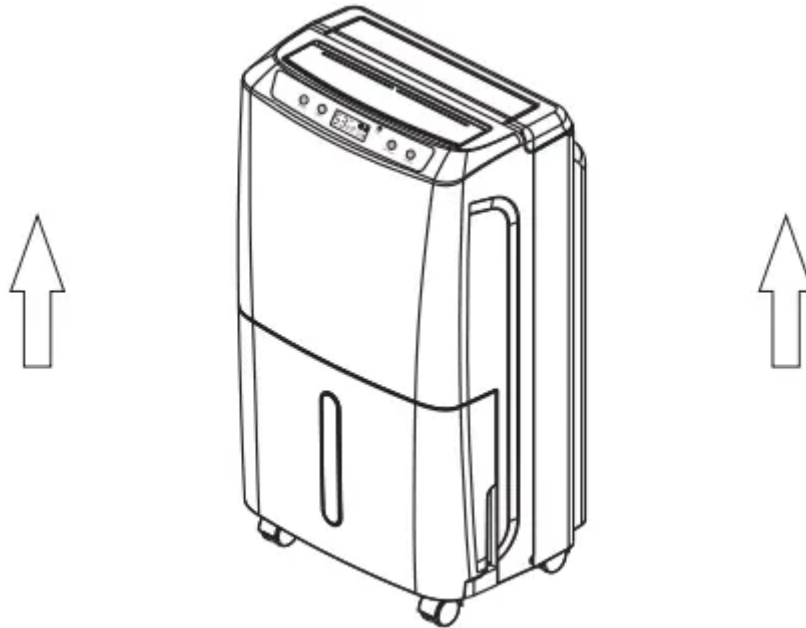


## **BEFORE FIRST USE:**

To prevent any internal damage, it is very important to keep refrigeration units (like this one) upright throughout their journey. Please leave it standing upright and outside the box for 24 HOURS before plugging it in.



## **Important Safety Instructions**

**IMPORTANT NOTICE FOR FIRST USE:** To prevent injury to the user or other people and property damage, the following instructions must be followed when using the Dehumidifier. Incorrect operation due to ignoring of instructions may cause harm or damage. This instructions is for household use only.

- Make sure to turn off and unplug the dehumidifier before cleaning.
- Do not touch the plug with wet hands.
- Do not operate or turn off the dehumidifier by plugging in or unplugging the device. Use the control panel instead.
- Be sure to run the water hose sloping downward to let the water flow out smoothly.
- Do not use if the power cord is broken or damaged.
- Do not place the dehumidifier in places where it may be splashed by water.
- Do not place the dehumidifier near a heat source.
- Do not install the dehumidifier in a location that may be exposed to combustible gas.

- Do not use the dehumidifier near flammable gas or combustibles, such as gasoline, benzene, thinner, etc.
- Do not use in areas where chemicals are handled.
- Do not climb on or place objects on the dehumidifier.
- Do not place a heavy object on the power cord and make sure that the cord is not compressed.
- Place the dehumidifier on a level, sturdy section of the floor, and avoid placing on uneven or tilted section.
- Disconnect the power if strange sounds, smell, or smoke comes from the dehumidifier.
- Do not take the water bucket out while the dehumidifier is working.
- Do not cover the intake or exhaust openings with cloths or towels.
- Care should be taken when using the dehumidifier in a room with the following persons: infants, children, the elderly and people not sensitive to humidity.
- Never insert your finger or other foreign objects into grills or openings. Take special care to warn children of these dangers.
- You should never try to take apart or repair the dehumidifier by yourself.
- Do not drink or use the water drained from the dehumidifier.
- Always insert the filters securely. Make sure to clean the filter once every month.
- Do not use the dehumidifier in very small spaces.
- If water enters the dehumidifier, please turn the dehumidifier off and disconnect the power. contact Waykar Customer Service in order to avoid a hazard.

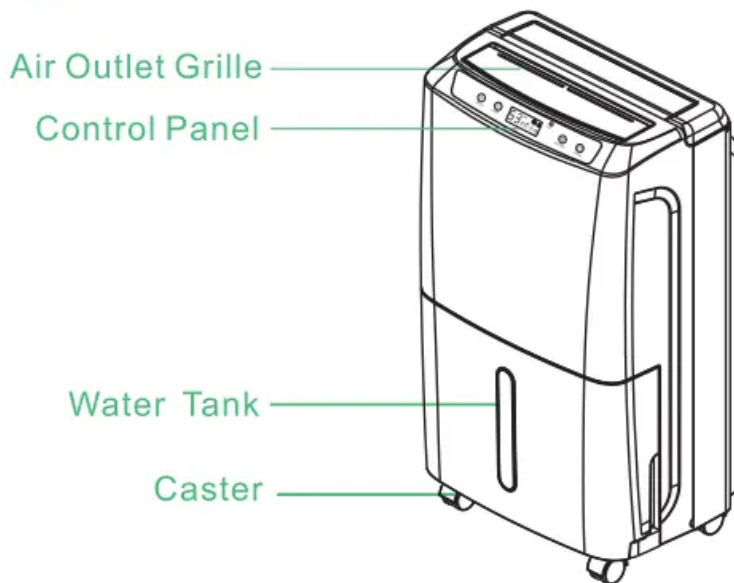
## **CAUTION**

- If the dehumidifier is knocked over during use, turn off the dehumidifier and unplug it from the main power supply immediately. Visually inspect the dehumidifier to ensure there is no damage. If you suspect the dehumidifier has been damaged, contact Waykar Customer Service for repair or replacement.
- Do not operate dehumidifier with a damaged cord or plug . Please contact Waykar Customer Service for repair or replacement .
- To reduce the risk of fire or electric shock , do not use this dehumidifier with any solid - state speed control device
- The dehumidifier shall be installed in accordance with national wiring regulations
- Be sure the dehumidifier is properly grounded . To minimize shock and fire hazards , proper grounding is important . This power cord is equipped with a three - prong grounding plug for protection against shock hazards .

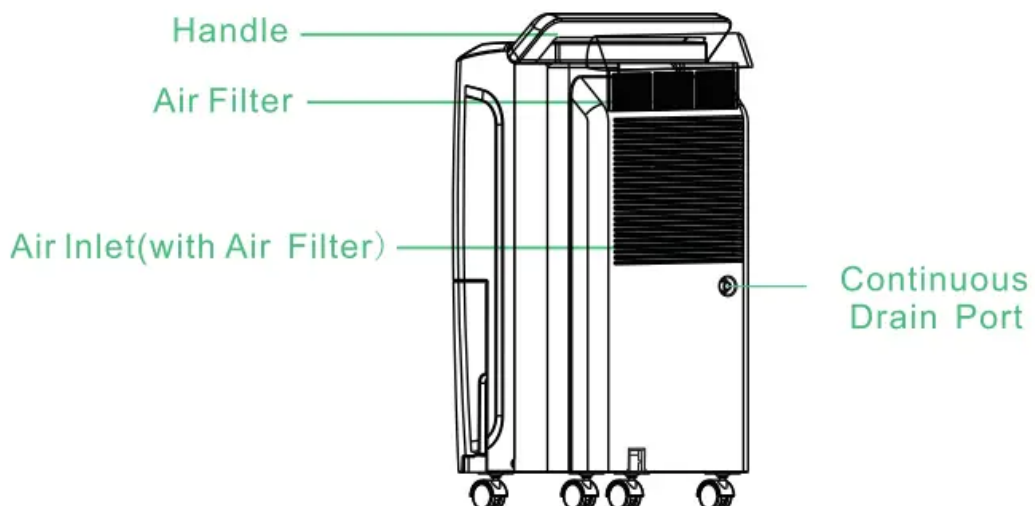
- Your dehumidifier must be used in a properly grounded wall socket . If your wall socket is not adequately grounded or protected by a time delay fuse or circuit breaker , have a qualified electrician install the proper socket .
- Avoid fire hazard or electric shock . Do not use an extension cord or an adapter plug . Do not remove any prong from the power cord

## Parts Description

### FRONT

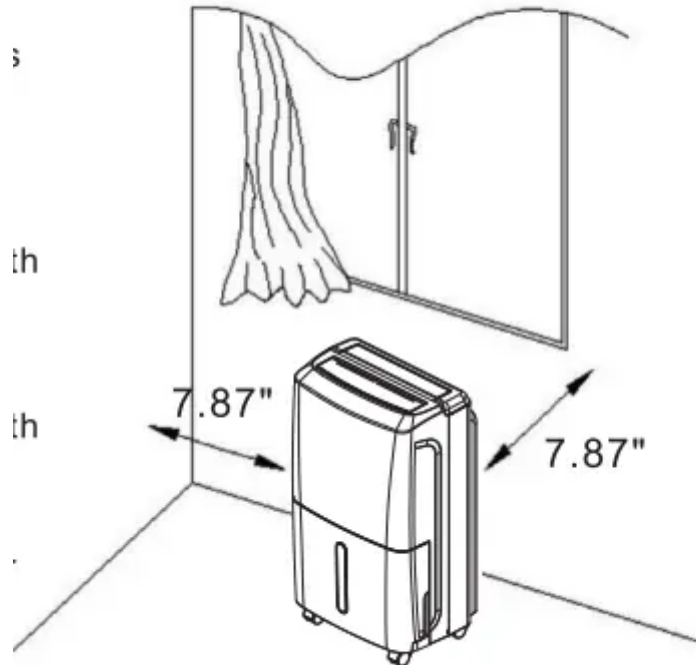


### REAR



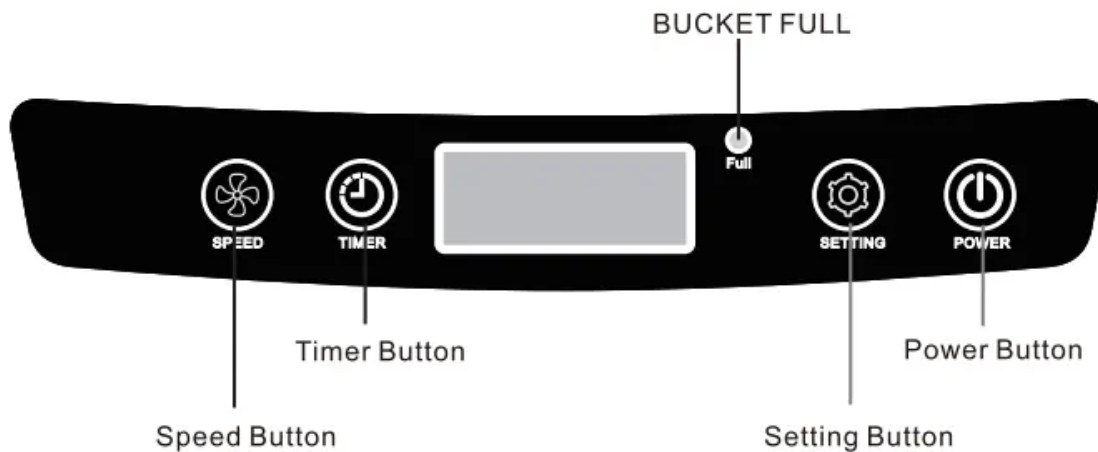
## OPERATION

### PLACE CORRECTLY



- This unit may have been tilted or placed upside down during shipping. To ensure this device works properly, please ensure this unit is upright for at least 24 hours before initial use.
- This dehumidifier is designed to operate with a working environment between 41°F (5°C) and 95°F (35°C).
- This dehumidifier is designed to operate with a working environment between 41°F (5°C) and 95°F (35°C). Do not force casters to move over carpet. or move the dehumidifier with water in the bucket. (The dehumidifier may tip over and spill water.)

## CONTROL PANEL



### 1. Power Button

- Press to turn the dehumidifier on and off.

### 2. Setting Button: The humidity level can be set within a range of 30%RH to 80%RH in 5% increments.

- When it start work, it will first automatically detect and show the humidity (and temperature) in the room, then you can press or hold the Setting Buttons to change the humidity selection in 5% increments. (After you have set the desired humidity, the readout will display the actual room humidity.)
- When the room humidity level overtake or drops to the level you set, the dehumidifier will automatically begin working or stop.
- When the humidity level is set at 30%RH, the dehumidifier will be at CONTINUOUS. dehumidifying mode.

### 3. Timer Button

- The TIMER function enables you to either Delay Start or Delay Stop the unit in the choice from 1 hour to 24 hours. If the unit is running. then selecting Timer will turn the unit off in the hours that will be set (Delay Stop). If the unit is off. then selecting Timer will turn the unit on in the hours that will be set (Delay Start).
- TIMER setting: Pressing or holding the Timer Button to change the delay timer at 1 hour increments, up to 24 hours. After TIMER setting finishes, the control will display the time remaining (8. .. etc.) until the unit either starts or stops. If then pressing TIMER button

again. the control will display the room temperature like before. After that. pressing TIMER button again at any time will stop the TIMER function. For the Delay Start, the fan speed and humidity maintained will be the same as previous setting. Adjusting the timer setting to 0.0 will cancel the Auto Start/Stop function

#### NOTE

- Before entering TIMER setting, make sure power is being supplied to the unit.
- Before entering TIMER setting, make sure pressing Setting Button sets one desired room humidity first.

#### 4. Speed Button

- Control the fan speed. Press to select either High or Normal fan speed. A higher fan speed will result in quicker moisture removal. Set the fan control to High for maximum moisture removal. When the humidity has been reduced and quiet operation is preferred, set the fan control to Normal.

#### 5. "BUCKET FULL" Indicator Lights

- When the bucket is full, the light will flash and the machine will automatically shut off. After the water in the bucket is emptied, put the bucket back in place, then the indicator will go out, and the machine will restart.

#### 6. Auto Defrost Feature

- When the dehumidifier is running at a lower temperature, the system will automatically determine if there is frost, and if frost is present, it will automatically defrost.
- Defrost action: The fan runs at high wind speed while the compressor stops, and the LED screen displays the defrosting symbol.

#### Action Description

- Power on: Compressor start after fan work a few seconds.
- Power off: Compressor shut down at once, after a few seconds, the fan stop (when other malfunctions occurs or humidity reached the desired level, the fan will stop after tens of seconds).

## Tips:

- The compressor features "3 minutes delay protection" function — While the dehumidifier is powered, the compressor can only start again three minutes after its last shutdown.

## Fault & Protection Codes

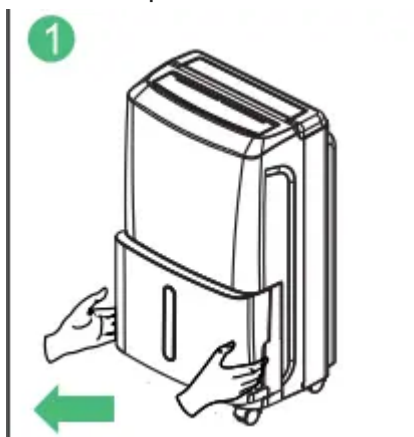
1. E1 : Humidity sensor error
  2. E2: Defrost temperature sensor error
  3. E4: Temperature sensor error
  4. E7: Bucket is full. Empty the bucket.
- If the display reads "E1". "E2" or "E4" error codes, please turn off and unplug the unit, and check for any obstructions. Plug it in again and restart the dehumidifier. if the malfunction is still present. please contact Waykar Customer Service at [support@waykar.com](mailto:support@waykar.com) for repair and/or replacement.
  - When one of the above malfunctions occurs, the buzzer will alarm for a few seconds. Press any key during the alarm to release the alarm sound.
  - Before start the dehumidifier, please make sure open the air outlet grille otherwise the machine will overheat.
  - Please don't stop the dehumidifier working by cut off the power directly.

## REMOVING THE COLLECTED WATER

There are two ways to remove collected water:

1. Use the bucket: When the bucket is full. remove the bucket and empty it.

1. Hold the top and bottom center of the water tank with both hands and pull it out gently

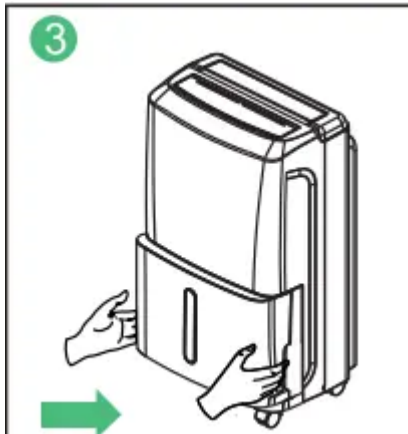


2.



Discard the collected water.

3. Return water tank to its original position. The Tank Full indicator will go off.

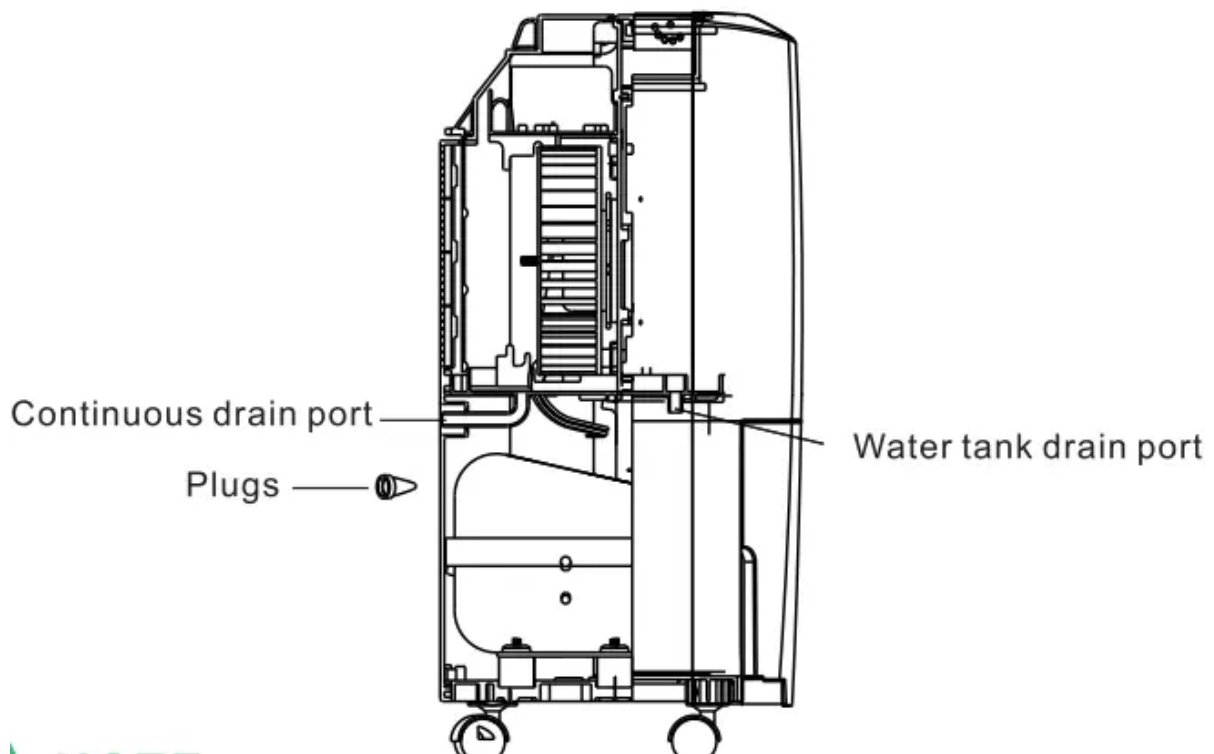


NOTE:

- Replace the empty bucket back into the unit and once seated correctly, the unit will start up again.
- You should hear a click when the bucket is in the correct position.
- Do not remove the float in the bucket, otherwise the sensor will not be able to sense the water level properly, so that the water will overflow from the bucket when the bucket is full.

## 2. Continuous draining

Water can be automatically be emptied into a floor drain by attaching the dehumidifier to a drain hose. (It may be helpful to remove the bucket so you can see the connection better. )(Note: The drain port inner diameter is 0.39inch )



- Make sure the connection is tight and there is no leaking.
- Lead the water hose to the floor drain or a suitable drainage facility, the drainage facility should be lower than the drain outlet of the dehumidifier.
- Be sure to run the water hose sloping downward to let the water flow out smoothly.
- When the continuous drain feature is not being used, remove the drain hose from the outlet.
- When on manual drain method, insert the "rubber plug" on the continuous drain port to prevent water leakage.
- When on continuous drain method using the drain hose, insert the "rubber plug" on the water tank drain port to prevent water leakage.

## CARE AND CLEANING OF THE DEHUMIDIFIER

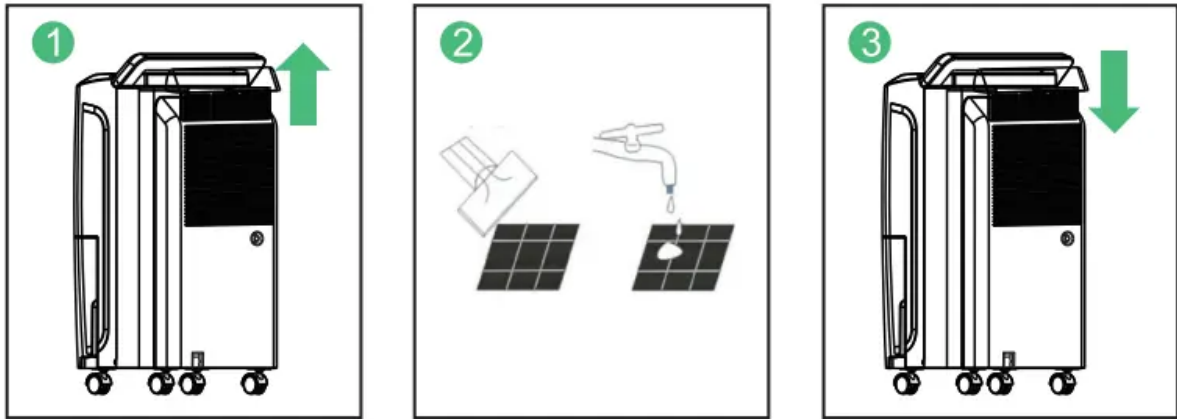
**WARNING :** Turn the dehumidifier off and remove the plug from the wall outlet before cleaning .

### 1. Clean the bucket

- Clean the bucket with water every two ( 2 ) weeks .

### 2. Clean the air filter

- Pull up to remove the air filter . Clean the filter with clean water at least once every 30 days



### 3. Storing the dehumidifier

When not using the dehumidifier for long time periods

- After turning off the dehumidifier , wait one day before emptying the bucket .
- Clean the main dehumidifier , bucket and air filter .
- Wrap the cord and bundle it with the band .
- Cover the dehumidifier with a plastic bag .
- Store the dehumidifier upright in a dry , well - ventilated place .

Warning: Do not operate the dehumidifier without a filter. Because dirt and lint will clog it and reduce performance.

## Troubleshooting

Before calling Waykar customer service, review this list. It may save you time and expense. This list includes the most common occurrences that are not the result of defective workmanship or materials in this dehumidifier.

Problem -- Reason -- Method

### 1. Dehumidifier does not work

Reason

- The power cord is unplugged
- Is the TankFull indicator blinking? (The tank is full or in a wrong position.)
- Is the room temperature above 95°F (35°C) or below 41°F (5°C).
- Is the room temperature between 41°F(5°C) and 68°F (20°C) ?
- The dehumidifier is in the defrosting process
- Does the room humidity is lower than or reach the preset humidity level? (The room humidity has reached the preset humidity level. he dehumidifier enters into Standby Mode and the the LCD and indicators will flashing.)

- There is prevent frequent start function in the machine. Dose the machine stop working just now?
- Room humidity is low.

#### Method

- Make sure that the unit's plug is inserted properly into the power outlet.
- Empty the water in the water tank and then reposition the tank.
- This product does not apply to over hot or cold environment. the machine will automatically protection. itis anormal phenomenon.
- When running under lower ambient temperature. the machine will automatically defrost. itis a normal phenomenon. Wait until the defrost process finish. it will restart dehumidifying again.
- Itis normal the compressor cease while defrosting process. Wait unti the defrost process finish. it will restart dehumidifying again.
- Please set the humidity 5% decrease by degrees than the room humidity or set the humidity to 30%.
- Please wait for more than 3 minutes.
- The dehumidifier is designed to work in the humidity range of 30%: 80%.Above or below the work humidity range. it will not work

## 2. Dehumidifier does not dry the air as it should

#### Reason

- The air filter is dirty.
- Is the air inlet or air outlet obstructed?
- The dehumidifi size is too small for application.
- Poor air circulation.
- Did not allow enough time to remove the moisture.
- The room has not been sealed properly.
- Room temperature is too low, or below 41°F (5°C)(The machine will not work and or poor dehumidify, efficiency in low temperature)
- Clean the air filter .
- Remove the obstruction from the air inlet or outlet

#### Method

- Increase the quantity of dehumidifier . Or change a higher capacity dehumidifier .
- Please leave about 7.9inch ( 20cm ) around the product .

- Allow enough time to remove the moisture When first installed , allow at least 3-4 days to maintain the desired RH .
- Check that all doors , windows and other openings are securely closed .
- Please wait the temperature rises above 5 ° C or higher

### **3. The dehumidifier makes loud noise when operating**

#### Reason

- The dehumidifier is not positioned level.
- Is there blocking around the air inlet? The air filter is clogged
- Is the filter installed correctly?

#### Method

- Move the machine to a horizontal position
- Clean up the dirty form the on the air outlet and intake .
- Please check whether the filter packing bag removed and install correctly

### **4. Dehumidifier operates continuously**

#### Reason

- Check if the dehumidifier is in CONTINUOUS MODE.
- Room humidity is too high.
- Doors and windows are open.

#### Method

- Don't set the humidity too low . Typically , 40-50 % are good settings to use .
- Change humidity settings . Or change a higher capacity dehumidifier
- Ensure that all doors , windows and other openings are closed .

### **5. Overflow of water on floor**

#### Reason

- Hose to connector or hose connection may be loose.
- The water bucket has not been installed properly.
- The water tank's float has been stuck.
- The magnet on the float has come off.

#### Method

- Connect the hose with the drain outlet tightly.
- Re-install the water bucket properly.
- Move the float and let it can be swung freely.

- Put the magnet in right position.

## TECHNICAL SPECIFICATIONS

MODEL	PD160B
POWER SOURCE	120V ~ 60Hz
RATED POWER(95°F,90%RH)	230W
RATED CURRENT(95°F,90%RH)	2.0A
MOISTURE REMOVAL(65°F,60%RH)	9.0 Pints/Day(4.25L/Day)
MOISTURE REMOVAL(80 °F,60%RH)	14 Pints/Day(6.6L/Day)
MOISTURE REMOVAL(86 °F,80%RH)	25 Pints/Day(12L/Day)
MOISTURE REMOVAL(95 °F,90%RH)	34 Pints/Day(16L/Day)
INPUT POWER(65°F,60%RH)	128W
INPUT CURRENT(65°F,60%RH)	1.2A
IEF( 65°F,60%RH)	1.30 liters/kWh
MOTOR FLA	0.19A
MOTOR COMPRESSOR	RLA:2.5A LRA:10.0A
REFRIGERANT	R134a/5.11ozs(145g)
MAXIMUM ALLOWABLE PRESSURE	363PSIG(2.5MPa)
HIGH PRESSURE	232PSIG(1.6MPa)
LOW PRESSURE	90PSIG(0.62MPa)

WARNING: This product can expose you to chemicals including Styrene and its compounds, which is known to the State of California to cause cancer and birth defects or other reproductive harm.

### Warning

This content is compiled from multiple sources and is provided for reference purposes only. It may not be complete or fully applicable to all situations. If you are unable to resolve your issue, please contact the product manufacturer or an authorized service provider for official support.

---

Document generated by [ManualsFile](#)

