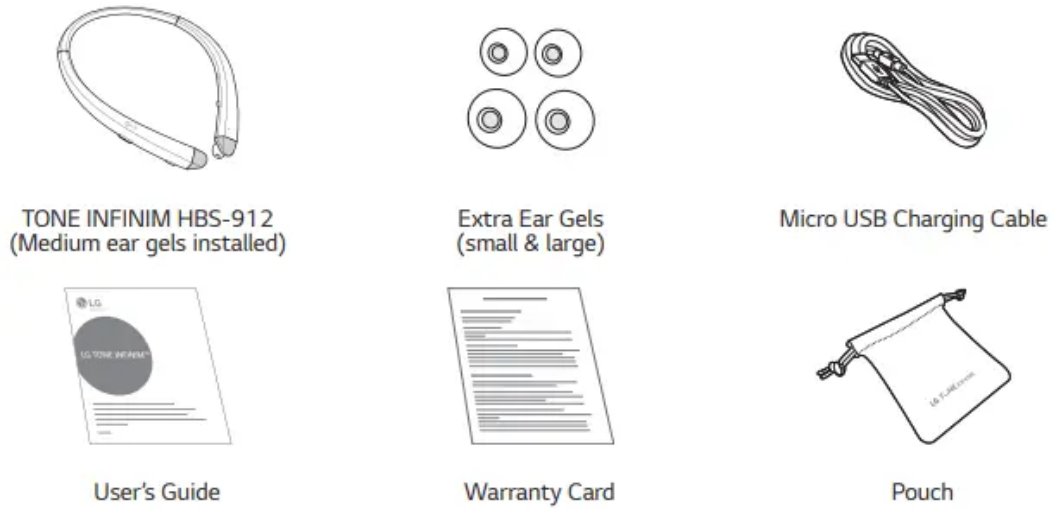


## Product Components

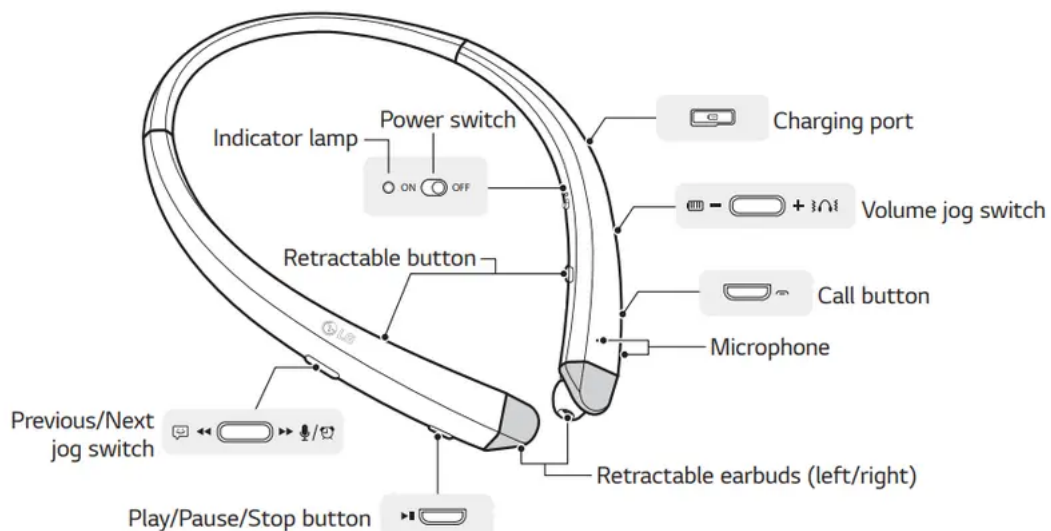


**NOTE:** Actual product design may differ from images shown in manual.

### CAUTION

Make sure authentic LG Electronics components are used. Using a non-authentic component may damage the product and thus void the warranty.

## Product Description

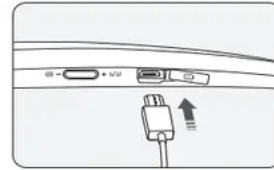


**NOTE:** When you control the volume (level 16), you will hear a control sound two times or as a long sound from volume level 6 and higher.

## Battery Charging and Alerts

Open the Charging port cover and connect the charger to the Charging port.

Indicator Lamp	Red	Purple	Blue
Battery Status	Charging	80%	Completed



Slide and hold the **Volume jog switch** in the volume down (-) direction for 1 second to check the Indicator lamp and battery level by voice.

Battery Status	Sufficient	Normal	Insufficient
Indicator Lamp	Blue flashes three times	Purple flashes three times	Red flashes three times

## HBS-912 Pairing and Connecting



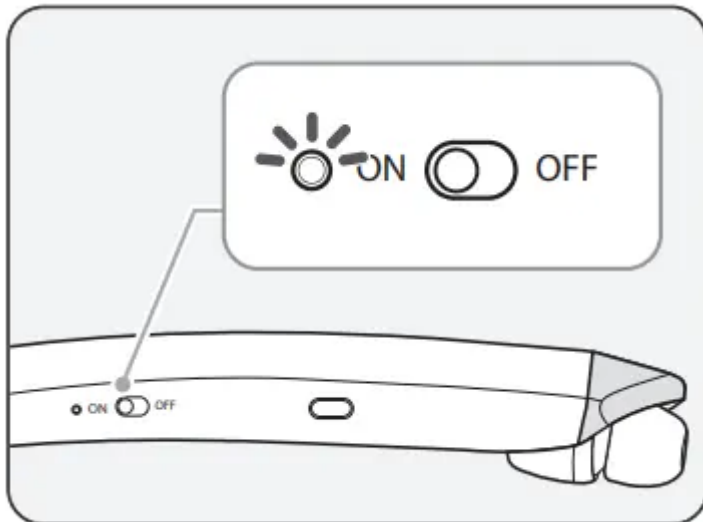
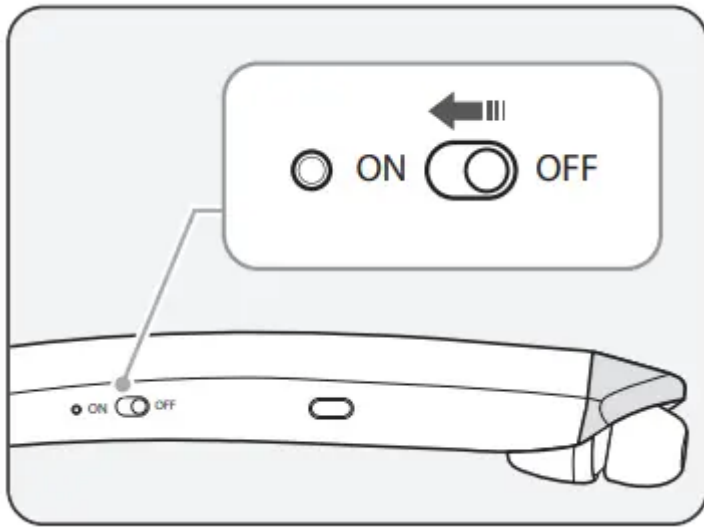
If you start the process after putting in your earbuds, you can easily pair and connect following the voice prompts.

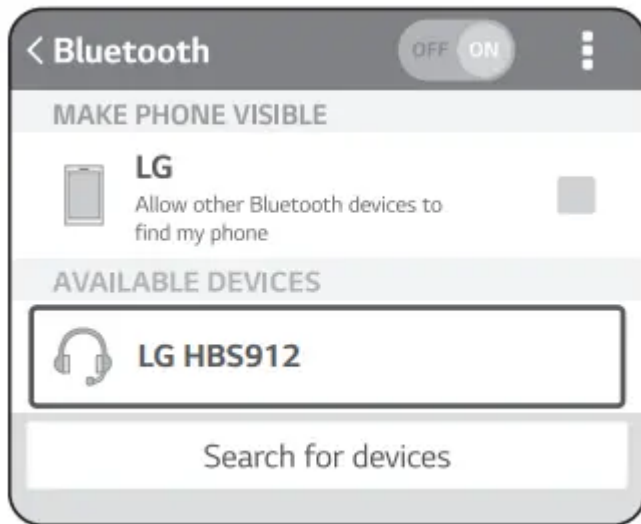
**NOTE:** If you are prompted for the authorization code (PIN Code), type **0000**.

If you hear that the battery is insufficient, recharge the battery before proceeding with pairing.

If pairing is not completed within 3 minutes, the power automatically turns off. When the power automatically turns off, slide the **Power switch** from the OFF to the ON position to turn the power on.

## Connecting Quickly





1. Slide the **Power switch** towards the **ON** position to turn on the power.
2. The blue Indicator lamp turns on and the HBS-912 switches to Search mode.
3. From the mobile phone or device list, select **LG HBS912** to connect.
4. A voice message will indicate that the connection is completed.
5. Use the same process to pair the HBS-912 with other devices.

### **Connecting Manually**

1. Press and hold the **Call button** and slide the **Power switch** to the **ON** position to turn it on.
2. The blue Indicator lamp turns on and the HBS-912 switches to Search mode.
3. Select **LG HBS912** from the device list to connect.

### **Multiple Connections**

The HBS-912 can be connected to a mobile phone and a PC simultaneously.

**NOTE:** If simultaneously connected to two devices, the main functions work based on the “Main Connected Device.”

1. Press and hold the **Call button** and slide the **Power switch** to the **ON** position to turn it on.
2. Perform Steps 2 to 4 in “Connecting Quickly.” This device becomes the “Main Connected Device.”
3. Try to connect to HBS-912 using a previously connected device. This device becomes the “Sub Connected Device.”

### **Automatic Reconnection**

If you turn on the product, it automatically searches for and connects to the devices (“Main Connected Device” and “Sub Connected Device”) to which it was previously connected. (If the product cannot find the device to which it was connected last time, the product switches to Search mode.)

If the product does not automatically connect to the device you want, search for your product in the device you want to connect to and connect it manually.

### **Indicator Lamp**

<b>HBS-912 Status</b>	<b>Description</b>
<i>Power On</i>	<i>The blue Indicator lamp flashes four times.</i>
<i>Power Off</i>	<i>The blue Indicator lamp flashes four times.</i>
<i>Search Mode</i>	<i>The blue Indicator lamp is on.</i>
<i>Headset/Hands-free Profile Connected</i>	<i>The blue Indicator lamp flashes once every 5 seconds.</i>
<i>Call Connected</i>	<i>The blue Indicator lamp flashes once every 5 seconds.</i>



## ***Mobile Calling Functions***

<i>Functions</i>	<i>Description</i>
<i>Receiving a Call/ Hanging Up</i>	<p>Briefly press the <b>Call button</b>.</p> <p>If you want to turn off the Vibration function of the product, briefly slide the <b>Volume jog switch</b> in the volume down (-) direction.</p>
<i>Making a Call</i>	<p>If you make a call using a mobile phone, the call is automatically connected to the HBS-912.</p> <p>On some mobile phones, you should briefly press the <b>Play/Pause/Stop button</b> two times to switch calls.</p>
<i>Redial</i>	<p>Press and hold the <b>Call button</b> for more than 1 second to place a call to the last number you called.</p>
<i>Voice Dial</i>	<p>Briefly press the <b>Call button</b>.</p> <p>If the mobile phone does not support the Voice Dial function, you can use the Redial function.</p>
<i>Switching Calls</i>	<p>Briefly press the <b>Play/Pause/Stop button</b> two times during a call.</p> <p>(Every time you press one of these buttons, the call switches to the mobile phone or the HBS-912.)</p>
<i>Receiving a Call While on the Phone</i>	<p>You can receive another call while on the phone by pressing and holding the <b>Call button</b> for 1 second.</p> <p>The existing call switches to a call waiting status. Press and hold the <b>Call button</b></p>

	<p>again for 1 second to switch back to the previous call.</p> <p>Briefly press the <b>Call button</b> to hang up in the middle of a call or to hang up both calls. (It works differently depending on the mobile phone settings.)</p>
Rejecting a Call	Press and hold the <b>Call button</b> for 2 seconds.
Enabling/Disabling Mute	Simultaneously slide and hold the <b>Volume jog switch</b> in the volume up (+) direction, and slide and hold the <b>Previous/Next jog switch</b> in the ◀◀ position for 1 second.

**CAUTION:** Do not disable/enable the mute while driving, as you need to use both hands.

**NOTE:** The Voice Dial and Redial functions work on the Main Connected Device or on the device on which you made the last call. (The Voice Dial and Redial functions may work differently depending on the mobile phone being used.)



## **Playing Music**

<i>Functions</i>	<i>Description</i>
<i>Play</i>	<i>Briefly press the <b>Play/Pause/Stop button</b>. Music will play from the activated player of the connected device.</i>
<i>Pause</i>	<i>Briefly press the <b>Play/Pause/Stop button</b>.</i>
<i>Stop</i>	<i>Press and hold the <b>Play/Pause/Stop button</b> for 1 second.</i>
<i>Play Previous/ Next Song</i>	<i>Briefly slide the <b>Previous/Next jog switch</b> in the <b>◀◀ or ▶▶</b> position.</i>
<i>Fast Rewind/ Forward</i>	<i>Slide the <b>Previous/Next jog switch</b> in the <b>◀◀ or ▶▶</b> position until you reach the desired section of the track.</i>
<i>Change Equalizer Mode</i>	<i>Briefly press the <b>Play/Pause/Stop button</b> twice. Changes modes with a beeping sound in the following order:  Bass Boost (default) &gt; Normal &gt; Treble Boost.</i>

### **Switching Music Players**

*If you stop in the middle of playback and then play music on either of the two connected devices, the HBS-912's music playback and control changes to that device.*

### **Vibration Alert Settings**

*Slide and hold the **Volume jog switch** in the volume up (+) direction for 2 seconds when the HBS-912 is not in use.*

If you turn off the vibration alerts, it will not vibrate even when a call is being received or you are out of communication range.

**NOTE:** The vibration alert is automatically set to the ON when you turn on the power.

## Out of Range

If the device connected to the product is out of effective communication range (33 feet / 10 meters), the communication signal becomes weak and the communication is lost.

If the device comes back within effective communication range, the product automatically reconnects to the device. If the device is not automatically reconnected, press the **Call button** on the product to connect to it manually.

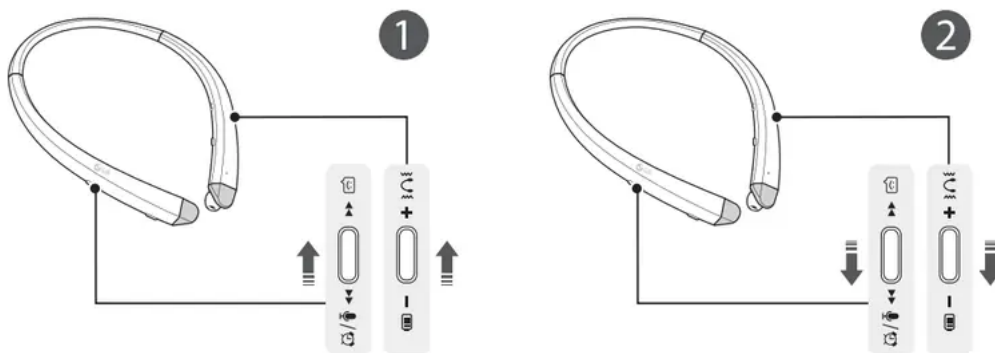
If a device that is not in use goes out of communication range when multiple devices are connected, the product vibrates and a voice message indicates that the connection is lost. In this case, the automatic reconnection function is not supported.

## Find Me (Find my phone)

To find handset, simultaneously slide and hold the **Volume jog switch** and the **Previous/Next jog switch** in the same direction for 1 second as shown in figures 1 and 2.

For example,

1. Simultaneously slide and hold the **Volume jog switch** in the volume up (+) position and the **Previous/Next jog switch** in the ◀◀ position for 1 second.
2. Simultaneously slide and hold the **Volume jog switch** in the volume down (-) position and the **Previous/Next jog switch** in the ▶▶ position for 1 second.



## Troubleshooting

<b>Problems</b>	<b>Solutions</b>
<i>The power does not turn on</i>	<i>Check the battery level and charge it.</i>
<i>Cannot make a call with the HBS-912</i>	<i>If the mobile phone does not support headset and hands-free functions, you cannot use the calling features.</i> <i>Check the battery level and charge it.</i>
<i>Cannot register the HBS-912 to the mobile phone</i>	<i>Check whether the HBS-912 is turned on.</i> <i>Check whether the HBS-912 is in Search mode.</i> <i>- Simultaneously press and hold the <b>Call button</b> and slide the <b>Power switch</b> to the ON position and the HBS-912 switches to Search mode.</i>
<i>The sound is low</i>	<i>Control the sound level of the device connected to the HBS-912.</i>

## **Specifications and Features**

<b>Item</b>	<b>Comments</b>
<i>Bluetooth Specifications</i>	<i>V 4.1 (Headset/Hands-Free/A2DP/AVRCP)</i>
<i>Battery</i>	<i>Battery 3.7 V / 210 mAh, Lithium-ion polymer</i>
<i>Standby Time</i>	<i>Up to 22.5 days*</i>
<i>Talk Time</i>	<i>Up to 16 hours*</i>
<i>Music Play Time</i>	<i>Up to 10.5 hours*</i>
<i>Charging Time</i>	<i>Less than 2 hours</i>
<i>Rated Input Voltage</i>	<i>DC 4.75 V ~ 5.3 V, 400 mA</i>
<i>Operating Temperature</i>	<i>-10 °C (+14 °F) ~ +50 °C (+122 °F)</i>
<i>Dimensions/Weight</i>	<i>5.7" (W) X 6.9" (L) X 0.6" (H) / 1.8 oz</i>
<i>Operating Frequency</i>	<i>2402 MHz to 2480 MHz</i>

*\*Certain features may use more power and cause actual time to vary.*

### **Warning**

This content is compiled from multiple sources and is provided for reference purposes only. It may not be complete or fully applicable to all situations. If you are unable to resolve your issue, please contact the product manufacturer or an authorized service provider for official support.

