

Unpacking Instructions

1. Place the box on a large, sturdy, flat surface.
2. Remove the instruction book and any other literature.
3. Turn the box so that the back side of the Coffeemaker is down and slide the Coffeemaker from the box.
4. After the Coffeemaker has been removed, place the box out of the way and lift off the packing material.
5. Grasp the carafe by its handle, remove it from the heating plate, and remove the polybag.
6. Remove the polybag covering the Coffeemaker.

The Quest for the Perfect Cup of Coffee

ELEMENT 1: WATER

Hot beverages are made up primarily of water. If water doesn't taste good from the tap, it won't taste good in your drink.

Cuisinart includes charcoal water filters in its water reservoirs to remove chlorine, bad tastes and odors, for the purest flavors, every time you brew.

ELEMENT 2: COFFEE

The flavor of your beverage comes from the coffee, tea, cocoa – or whatever you're brewing. To achieve the best taste, always use the best ingredients. Select fresh, high-quality beans or ground coffee, and only the best single serve capsules.

ELEMENT 3: GRIND

The grind of coffee, or the refinement of tea leaves, is critical for proper flavor extraction. Pre-ground ingredients in top-quality single serve capsules ensure excellent, flavorful results. When using beans or pre-ground coffee to brew into the carafe or use in the HomeBarista™

Reusable Filter Cup, the grind is just as critical. If it's too fine, over-extraction will result in bitterness and may clog the filter. If too coarse, maximum flavor is not extracted. We recommend a medium-fine grind.

ELEMENT 4: PROPORTION

Coffee that is too strong or too weak is always a disappointment. Follow the recommended portions of ground coffee in the instructions under Brewing Coffee for the drip side or under

Brewing with a Reusable Filter Cup for the single serve side. You can later adjust the amount to suit your taste.

Features and Benefits



1. **Coffeemaker Reservoir Cover:** Flips back for easy filling.
2. **Coffeemaker Water Reservoir (not shown):** With water level indicator window.
3. **Showerhead (not shown):** Distributes water evenly over coffee, reducing temperature loss as water passes through grounds.
4. **Coffeemaker Control Panel**
5. **Brew Pause™:** Stops flow of coffee from basket when carafe is removed from the heater plate, so a cup can be poured mid-brew.
6. **Carafe:** The easy-pour, no-drip, 12-cup carafe has an ergonomic handle and brewed coffee markings.
7. **Charcoal Water Filter Holder:** Holds filter firmly in place.
8. **Charcoal Water Filter:** Eliminates chlorine, bad tastes and odors from tap water.
9. **Adjustable Heater Plate:** Keeps brewed coffee at desired temperature. Scratch resistant with nonstick coating.
10. **Cord Storage (not shown)**
11. **Filter Basket (not shown):** Holds a #4 paper filter or a permanent filter.
12. **Filter Basket Holder (not shown)**

13. **Ready Tone (not shown):** Signals the end of the brew cycle with five beeps.
14. **Power Loss Back-Up System not shown):** One-minute protection if a breaker trips, unit is unplugged, or power fails. Holds all programmed information, including time of day, Auto On time and Auto Off time.
15. **Brewer Handle**
16. **Brew Head**
17. **Brewing Chamber:** Holds Removable Capsule Holder or reusable filter cup.
18. **Control Panel:** 6 oz. button; 8 oz. button; 10 oz. button; Add Water and Clean indicators.
19. **Power Switch**
20. **Removable Drip Tray Plate**
21. **Removable Drip Tray**
22. **Charcoal Water Filter Holder**
23. **Charcoal Water Filter**
24. **Reservoir Lid**
25. **40-Ounce Water Reservoir**
26. **Removable Capsule Holder**
27. **Power Cord (not shown)**
28. **Energy-Saving Mode (not shown):** Unit lights will dim after 30 minutes of being idle. To reactivate, press any button. To turn off completely, turn power switch to the OFF position.





Control Panel



1. Power Switch (not shown)

Located on the right side of your brewer.. Use to turn your Coffeemaker on and off.



2. Clock Display

Displays time of day, Auto On, and Auto Off times.

3. Clean Indicator

Indicates time to clean Coffeemaker to remove calcium buildup.

4. Hour and Minute Buttons

Use to set hours and minutes for time of day, Auto On, and Auto Off times.

5. BOLD Cup Setting with Indicator

Use to select bolder coffee flavor strength.

6. BREW/WARM Button

Top half of button "BREW" will be lit when unit is ready to brew. The top half will flash slowly while brewing. The bottom half of button "WARM" will be lit at end of a carafe brew cycle to indicate Keep Warm is activated.

7. Function Knob

a. PROG

Select to program Auto On time.

Coffeemaker can be programmed to automatically start brewing up to 24 hours in advance.

b. AUTO ON

Select to automatically start brewing coffee at the time you've programmed.

c. AUTO OFF

Select to program your Coffeemaker to automatically shut off Keep Warm mode up to 4 hours after brewing.

d. BREW

Select to begin brew cycle when BREW button is pressed.

e. CLOCK

Select to set time of day.

8. Carafe Temperature Knob

Set the heater plate to Low (L), Medium (M), or High (H) to keep coffee in the carafe at the temperature you prefer.

9. Brew Buttons: 6 oz. button; 8 oz. button; 10 oz. button.

10. Add Water Indicator

Indicates the need to add water to brew.

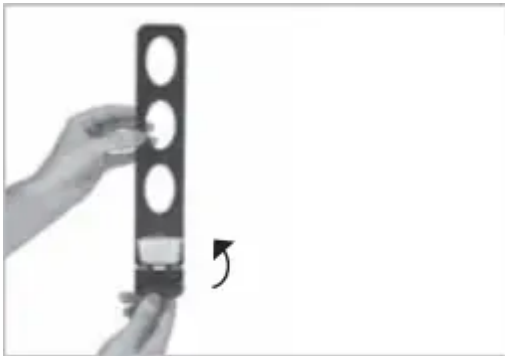
11. Clean Indicator

Indicates it is time to clean the Coffeemaker to remove calcium buildup.

Charcoal Water Filter

INSERTING THE WATER FILTER

1. Remove the filter from the polybag and soak, fully immersed, in cold tap water for 15 minutes.
2. Lift the water filter holder out of the water reservoir the 12-Cup Coffeemaker side.
3. Press down on the filter compartment and pull toward you to open.
4. Place filter into the holder and snap closed. Be careful – improper placement can tear the filter skin.



5. Flush filter by running cold tap water through holes in bottom of compartment for 10 seconds.

6. Allow the filter to drain completely.

7. Slide the water filter holder back into the channel in the water reservoir, pushing down to the base of the unit.



NOTE: Repeat steps 1-7 above on the Single-Serve side.

NOTE: We recommend changing the water filter every 60 days or after 60 uses, and more often if you have hard water.

INITIAL CLEANING

Perform an initial cleaning before making your first beverage. Follow these instructions, without adding coffee.

1. Insert charcoal water filter if you haven't already. Instructions above.
2. Fill water reservoir.



3. Make sure carafe is in place.
4. If you haven't already, plug the power cord into an independent outlet. Power on unit by pressing the power switch on side of the unit.
5. Turn function knob to BREW.
6. Press the BREW button and allow brew cycle to run.
7. The one-time cleaning process is complete. Discard hot water. Your Coffeemaker is ready to use.

Programming Your 12-Cup Coffeemaker

SETTING THE CLOCK

When the Coffeemaker is plugged in and power switch is turned on, 12:00 will flash.

Turn the Function knob to CLOCK

Press Hour and Minute buttons to select the desired time. Hold buttons down to scroll through the digits, or press and release to advance one digit at a time. When scrolling, the numbers will advance slowly and then speed up. When the number displayed approaches the desired time, press and release to advance one digit at a time. Be sure the PM indicator is on if a PM time is desired.

To finish setting the clock, turn the Function knob to any other setting or simply wait until the numbers stop blinking.

SETTING THE AUTO-ON TIME

When you turn the Function knob to PROG, the previously selected Auto On time, or the default time (12:00) will flash.

1. Turn the Function knob to PROG. Use the Hour and Minute buttons as above to program your start-brew time.
2. Turn the Function knob to AUTO ON. Press the BREW/WARM button to activate the program. When you press BREW/WARM, the AUTO ON blue light will illuminate, indicating the AUTO ON function has been activated. LCD will display the current time.
3. AUTO-ON brew cycle begins. The blue light around BREW will flash slowly when the brew cycle begins at the time you have selected. When the brew cycle ends, WARM will illuminate indicating Keep Warm cycle. Lights will turn off when the Keep Warm cycle ends and BREW will come back on indicating the coffeemaker is ready for the next brew.

NOTE:

- To start brew time at the same time the next day, simply make sure the
- Function knob is at AUTO ON and press and release Brew/Warm button once more.
- The blue Auto On light will turn on.

SETTING THE AUTO-OFF TIME

Turn the Function knob to AUTO OFF

Use the Hour and Minute buttons as above to program your Coffeemaker to shut off from 0 to 4 hours after brew cycle is finished.

SETTING THE CARAFE TEMPERATURE

Use this feature to control the temperature of the coffee in the pot. Turn the carafe TEMP knob to set your desired temperature High, Medium or Low.

Brewing Coffee

1. Insert charcoal water filter: Follow directions for the preparation and insertion of the filter.
2. Fill the water reservoir: Open the Coffeemaker reservoir cover by lifting it up. Pour in the desired amount of water, using the water level indicator located at the side of the Coffeemaker.
3. Before brewing: Make sure the glass carafe is in position on the heater plate and the top cover is closed. Plug the cord into an electrical outlet.

4. Set preferences

1. Push the BOLD button if you would like a stronger brew. BOLD button will illuminate.
 2. Turn the Carafe Temperature dial to Low (L), Medium (M), or High (H) and the heater plate will keep coffee at the temperature you select.
5. Add the ground coffee: Remove the filter basket by grasping the handle and lifting straight up. Insert a #4 paper filter or permanent filter. Be sure that a paper filter is completely open and fully inserted in the basket. It may help to fold and flatten the seams of a paper filter beforehand. Add 1 level scoop of ground coffee per cup. Adjust the amount according to taste. NOTE: The maximum capacity for ground coffee is 15 tablespoons for this Coffeemaker. Exceeding this amount may cause overflow if the coffee is too finely ground. Replace the filter basket in the filter basket holder and press firmly on cover to be sure it closes securely.
6. Brewing coffee: Turn the Function knob to BREW, press the BREW/WARM button, and the blue indicator light will flash slowly. Or, set the AUTO ON function (see page 9) and the Auto On indicator will light.
7. After brewing: When the brewing cycle has been completed, coffee will continue to stream from the filter for several seconds. When streaming completely stops, five beeps will sound and you can now enjoy your coffee.

NOTE: Reservoir cover may be hot during and directly after brewing. Wait at least 10 minutes before opening.

BREW PAUSE™ FEATURE

This feature interrupts the flow of coffee from the basket to let you pour that first cup mid-brew. Because the flavor profile of coffee brewed at the start of a cycle differs from that brewed toward the end, be aware that using this feature will weaken the flavor strength of the finished pot.

NOTE: Removing carafe for more than 20 seconds may cause filter basket to overflow.

Brewing with a Reusable Filter Cup

1. Remove water reservoir to fill.
2. Add water into the 40-ounce water reservoir. Replace on unit.

3. If not already turned on, press the power switch located on the side of your unit. Brew buttons will illuminate.

4. Place mug on the drip tray. The drip tray can be removed to accommodate travel mugs.

5. Select a capsule.

NOTE: Do not remove the foil lid or puncture the capsule.

6. Open the brew head and place a capsule in the brewing chamber. Close brew head.

Caution: There are two sharp needles in the brewing chamber that puncture the capsule, one above and one below. To avoid risk of injury, do not put your fingers in the capsule brewing chamber.



7. Press the desired brew button (6, 8, or 10 oz.). The beverage will start to dispense momentarily. Selected brew button will flash slowly while brewing.

NOTE: To cancel brewing, simply press the selected brew size once again and the brewing process will be stopped.

Caution: There is very hot water in the capsule chamber during the brewing process. To avoid risk of injury, do not lift the handle or open the capsule chamber during the brewing process.



8. Once fully dispensed, all lights will illuminate.

Lift the handle, then remove and dispose of the used capsule. Close the brew head.

Caution: Capsule will be hot.



Brewing with the HOMEBARISTA™ Reusable Filter Cup

The Single-Serve Coffeemaker can be used with a reusable coffee capsule, which allows you to use your own ground coffee.

Try the Cuisinart® HomeBarista™ Reusable

1. Filter Cup included with your brewer for your favorite coffee or tea.

Fill the filter basket within the reusable capsule with ground coffee, making sure not to fill past the max indicator. Adjust the amount to your personal preference. Do not tamp the grounds. Make sure there are no grounds remaining on the upper rim of the filter basket. Close lid.

Note: Max fill: 2.5 scoops or 15 grams.



2. Remove the capsule holder from the brewing chamber by pulling toward you.



Drop the reusable coffee capsule into the brewing chamber. There is no need to snap it into place.

NOTE: To cancel brewing, simply press the selected brew size once again and the brewing process will be stopped.

Caution: There are two sharp needles in the brewing chamber that puncture the capsule, one above and one below. To avoid risk of injury, do not put your fingers in the brewing chamber.

3. After brewing, raise the handle and remove the reusable coffee capsule. Use caution as the reusable coffee capsule will be hot.

4. Replace the capsule holder, ensuring that the arrow on capsule rim aligns with the arrow on the brewing chamber. Gently push the capsule holder to snap into place.

NOTE: This Coffeemaker is compatible with most reusable coffee capsules.

Cleaning & Maintenance

Always turn unit off and remove the plug from the electrical outlet before cleaning.

- Lift up the Coffeemaker reservoir cover.
- Remove and discard the paper filter and ground coffee. The filter basket can be washed in warm, soapy water and rinsed thoroughly, or cleaned in the upper rack of the dishwasher.
- Dry all parts after use.

Do not put any water in the unit once the filter basket has been removed. Wipe the area under the filter basket with a damp cloth.

- Remove the carafe from the heating plate.
- Discard any remaining coffee. The carafe and lid can be washed in warm, soapy water and rinsed thoroughly, or placed in a dishwasher. The carafe and carafe lid should be placed on the upper rack only.
- Do not use any scouring agents or harsh cleansers on any part of the Coffeemaker.

- Never immerse base unit in water or other liquids. To clean base, simply wipe with a clean, damp cloth and dry before storing. Fingerprints and other blemishes on the housing can be washed off with soap and water or a nonabrasive cleaning solution. Wipe heater plate with a clean, damp cloth. Never use rough, abrasive materials or cleansers to clean the heater plate. Do not dry the inside of the water reservoir with a cloth, as lint may remain.

Maintenance: Any other servicing should be performed by an authorized service representative.

DESCALING

Descaling refers to the removal of calcium deposits that form over time on the metal parts of the Coffeemaker.

To Descale Your Coffeemaker

Depending on the mineral content of water in your area, calcium deposits (scale) may build up in your Coffeemaker. Though scale is not toxic, it can affect performance. Descaling the

Coffeemaker when the indicator signals it is time to do so will help protect the heating element and other parts that come into contact with water.

For optimal performance, descale Coffeemaker every 3 to 6 months. If calcium deposits build up faster, the CLEAN light will illuminate, indicating cup Coffeemaker should be descaled.

To clean:

1. Fill the water reservoir to capacity with a mixture of 1 white vinegar and 2 water.
2. Press and hold the CLEAN button. When the CLEAN LED indicator flashes, the coffeemaker is in Clean mode. Release the button.
3. When the cycle is completed, 5 beeps will sound and the coffeemaker will shut off.
4. If the CLEAN indicator illuminates once more, repeat the cleaning procedure with a fresh solution of vinegar and water. **NOTE:** One cleaning cycle is usually sufficient.
5. When the CLEAN indicator remains off, run one cycle with a full reservoir of fresh, cold water to rinse the unit.
6. Return the charcoal water filter to the holder inside the water reservoir and your coffeemaker is ready to brew!

Single-Serve Cleaning and Maintenance

CLEANING EXTERNAL PARTS

We recommend regular cleaning of the

Coffeemaker's external components.

1. Never immerse the Coffeemaker in water or other liquids. The housing and other external components may be cleaned with a soapy, damp, nonabrasive cloth.
2. To remove the drip tray, simply slide it toward you, keeping it level at all times in order to prevent spills. The drip tray and drip tray plate are dishwasher safe. Do not clean drip tray with cleansers, steel wool pads or other abrasive materials.

CLEANING THE CAPSULE HOLDER

Caution: There are sharp needles that puncture the capsule above and below. To avoid risk of injury, do not put your fingers in the capsule brewing chamber.

1. The capsule holder is top-shelf dishwasher safe (use low temperature cycle). To remove, lift the handle to open the brewing chamber. Grasp the top of the capsule holder and pull up.
2. Cleaning the Funnel – To remove funnel from capsule holder, hold funnel in left hand, twist bottom away from you slightly and pull away from capsule holder to remove. The funnel is top-rack dishwasher safe.

NOTE: The funnel may be tight the first few times you go to remove it; this is normal and will loosen with continued use.



3. Cleaning the Exit Needle – The exit needle is located on the inside bottom of the capsule holder assembly. Should a clog arise because of coffee grounds, it can be cleaned using a paper clip or similar tool. Remove capsule holder from unit, then remove funnel from capsule holder and insert the paper clip into exit needle to loosen the clog and push it out.



Replace funnel onto capsule holder by lining up tabs in funnel with notches on capsule holder, twist toward you until it locks into place. After cleaning, replace capsule holder, being sure to align the arrow on the capsule holder rim with arrow on the brewing chamber.

4. Cleaning the Piercing Needle – The piercing needle is located on the inside of the brewing chamber. Should a clog arise because of coffee grounds, it can be cleaned using a paper clip or similar tool. Insert paper clip to loosen the clog and push it out.



CLEANING THE HOMEBARISTA™ REUSABLE FILTER CUP

Simply dispose of coffee grounds, then hand- wash both the filter cup and filter, or clean on top rack of dishwasher.

CLEANING THE WATER RESERVOIR

It is normal over time for discoloration, spotting or staining to appear in the water reservoir.

Results will vary depending on the mineral content of the water used, but will not affect the operation of the brewer. However, be sure to clean the water reservoir regularly to minimize buildup.

Clean inside the water reservoir with a damp, lint-free cloth as necessary.

Descaling Your Single-Serve Brewer

Mineral content in water varies from place to place. Depending on the mineral content of the water in your area, calcium deposits or scale may build up in your Coffeemaker. Though scale is nontoxic, it can hinder Coffeemaker performance. Descaling your Coffeemaker will help maintain the heating element and other parts that come in contact with water.

For optimal performance, descale your

Coffeemaker every 3 to 6 months. It is possible for calcium deposits to build up faster, making it necessary to descale more often. When all the lights flash in sequence upon turning the unit on, this indicates the need to descale.

NOTE: Before descaling your Coffeemaker, remember to remove the charcoal water filter from the water filter holder located in the water reservoir.

To begin, you will need the following:

- 13 oz. of distilled white vinegar
- 26 oz. of water
- 16 oz. ceramic mug or container (do not use paper cup)
- Access to a sink

Step 1: First Vinegar Rinse

1. Fill water reservoir with 13 oz. of white vinegar and 26 oz. of water.
2. Place the ceramic mug or container on the drip tray.
3. Press and hold the 6 oz. and 8 oz. buttons for seconds to start descale function.
4. Discard contents of mug into the sink.
5. Repeat until ADD WATER light comes on.
6. When descaling is complete, all LED lights will be on.
7. Discard any remaining diluted vinegar into sink.

Step 2: Fresh Water Rinse

1. Repeat Step 1 three times, using fresh water in place of vinegar.
2. This will clean the Coffeemaker plumbing and remove any residual vinegar taste.

Setting up your Single-serve Coffeemaker

Perform an initial cleaning before making your first beverage. Follow these instructions, without inserting a capsule.

INITIAL CLEANING

1. Insert charcoal water filter if you haven't already. Instructions	
2. Remove water reservoir from the unit.	
3. Fill the reservoir in sink and put back on unit.	
4. If you haven't already, plug the power cord into an independent outlet. Press the power switch on side of the unit to turn the unit on.	
5. Open and close the brew head. Do not add a capsule.	
6. Place mug on the drip tray.	
7. Press the 10 oz. cup button. Light will flash slowly and the hot water will start to dispense momentarily.	
8. The one-time cleaning process is complete. Discard hot water. Your brewer is ready to use.	

Warning

This content is compiled from multiple sources and is provided for reference purposes only. It may not be complete or fully applicable to all situations. If you are unable to resolve your issue, please contact the product manufacturer or an authorized service provider for official support.