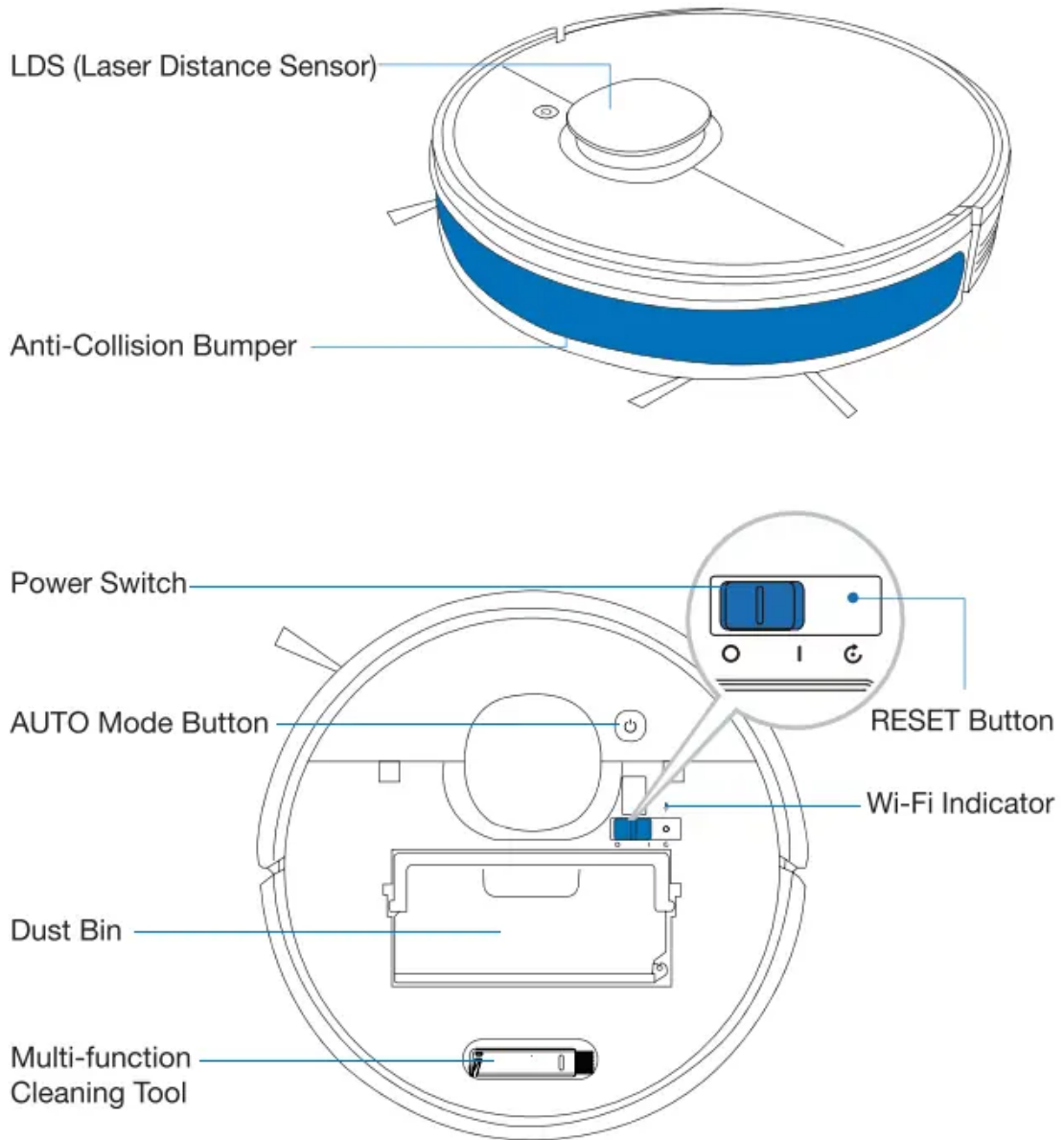


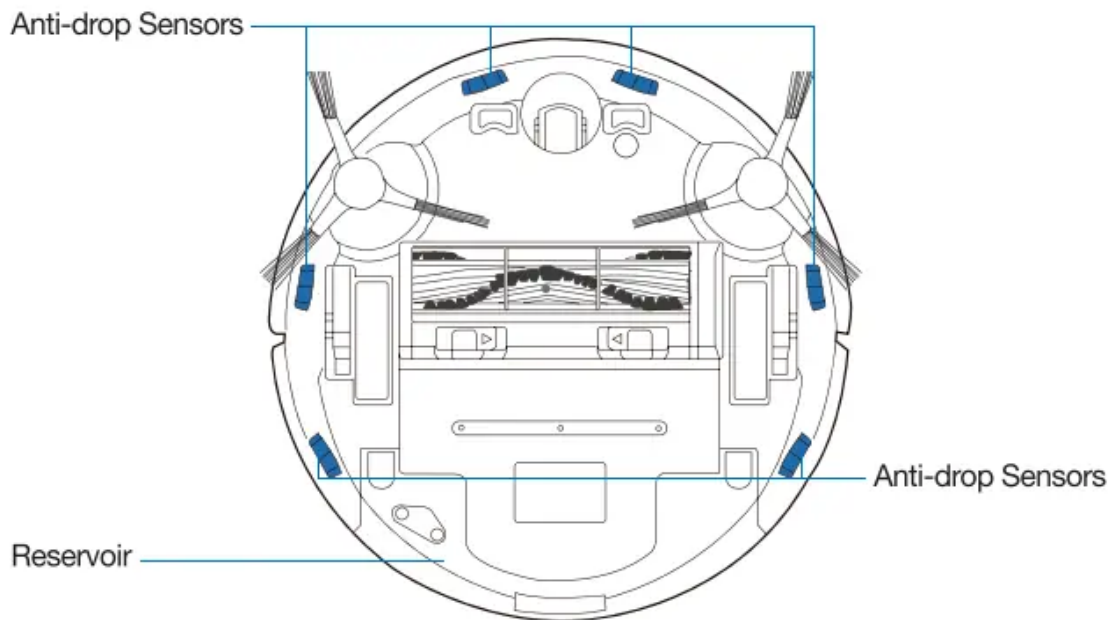
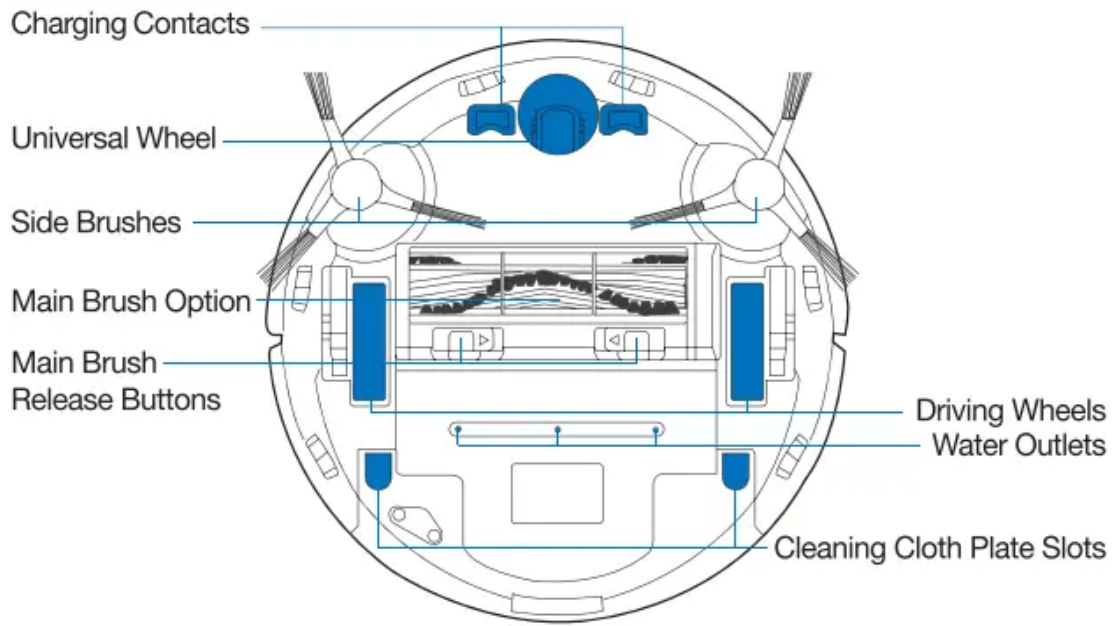
## Product Diagram

### Robot

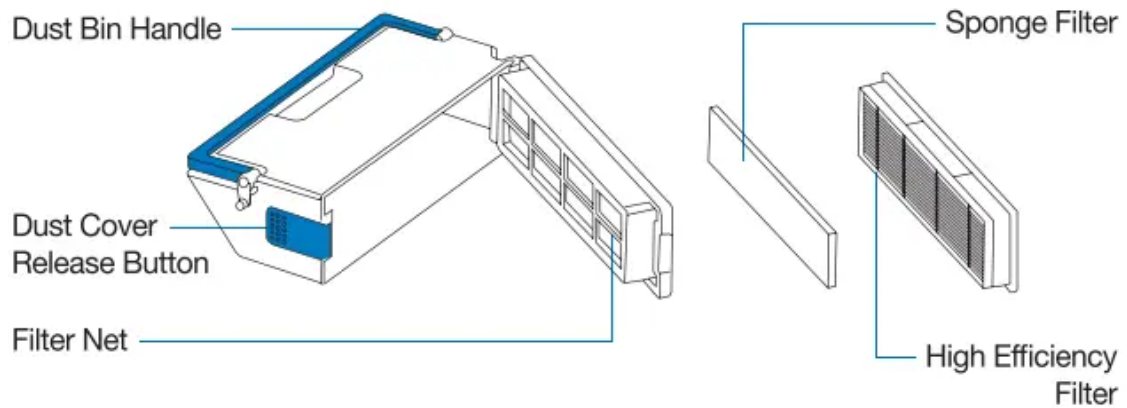


### Bottom View

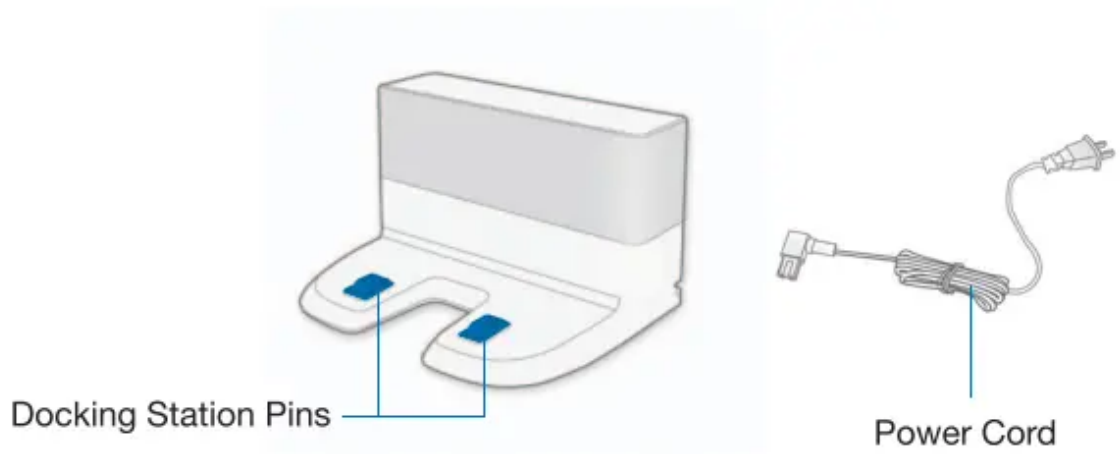




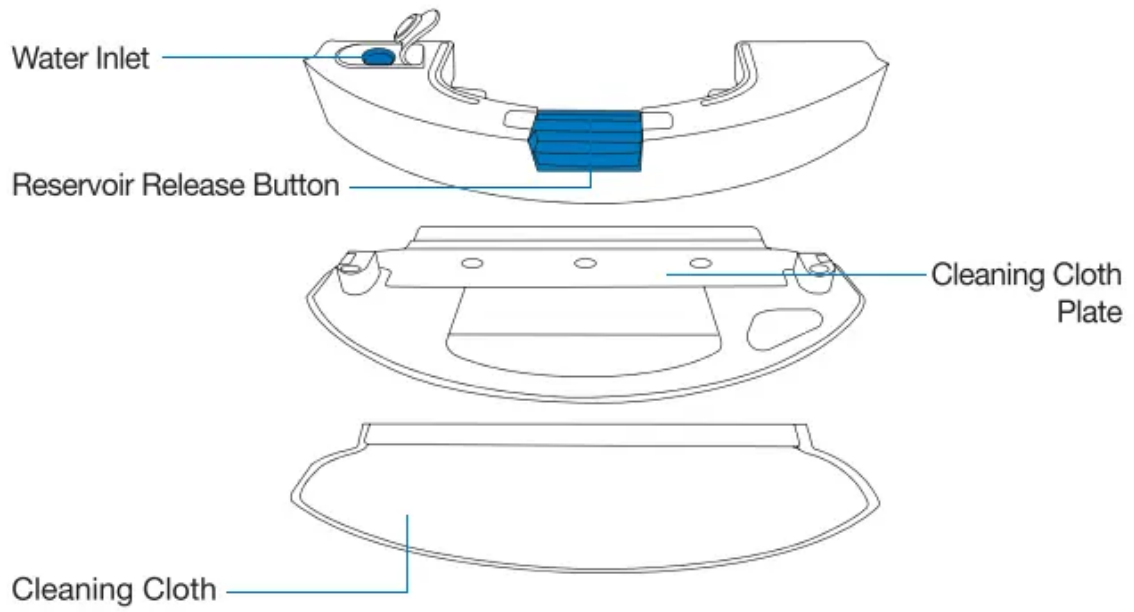
**Dust Bin**



## Docking Station

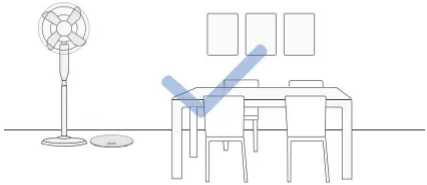
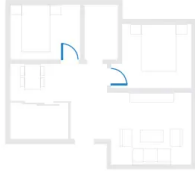
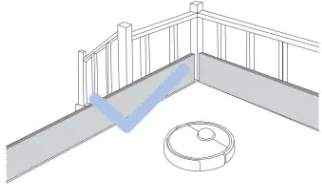


## Reservoir



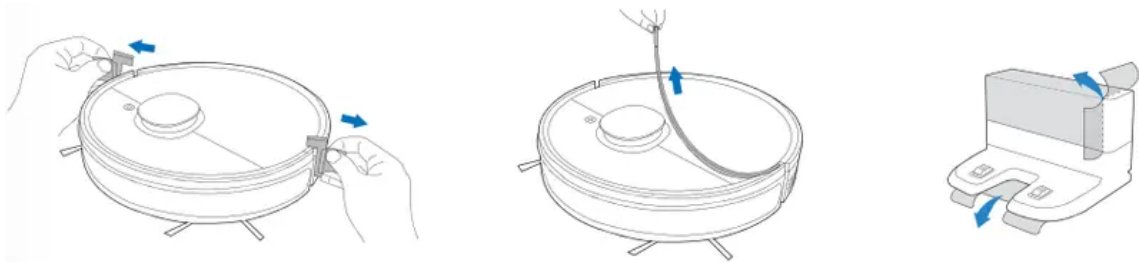
# Operating and Programming

## Notes Before Cleaning

<p>Tidy up the area to be cleaned by putting furniture, such as chairs, in their proper place.</p>	<p>During the first use, make sure each room door is open to help DEEBOT fully explore your house.</p>	<p>It may be necessary to place a physical barrier at the edge of a drop to stop the unit from falling over the edge.</p>
		
<p>Put away objects including cables, cloths and slippers, etc- on the floor to improve the cleaning efficiency.</p>	<p>Before using the product on a rug with tasseled edges, please fold the rug edges under.</p>	<p>Please do not stand in narrow spaces, such as hallways, and make sure not to block the LDS Laser Distance Sensor.</p>

## Quick Start

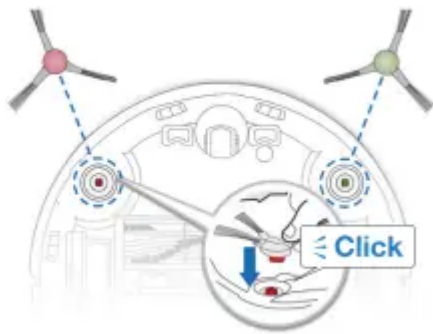
### 1. Remove Protective Strips and Films



### 2. Assemble Docking Station

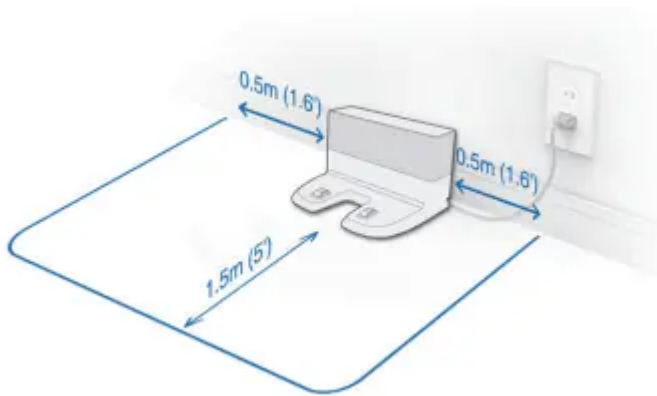


### 3. Install Side Brushes

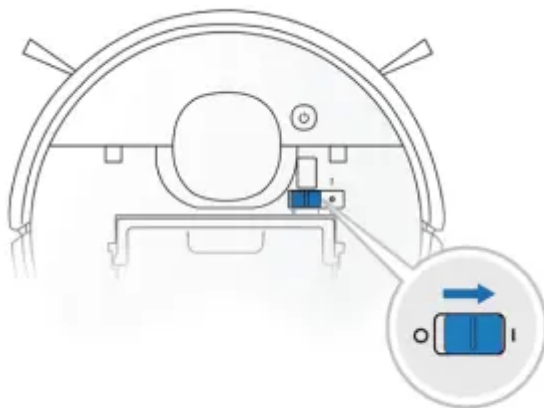


## Charge DEEBOT

### 1. Docking Station Placement



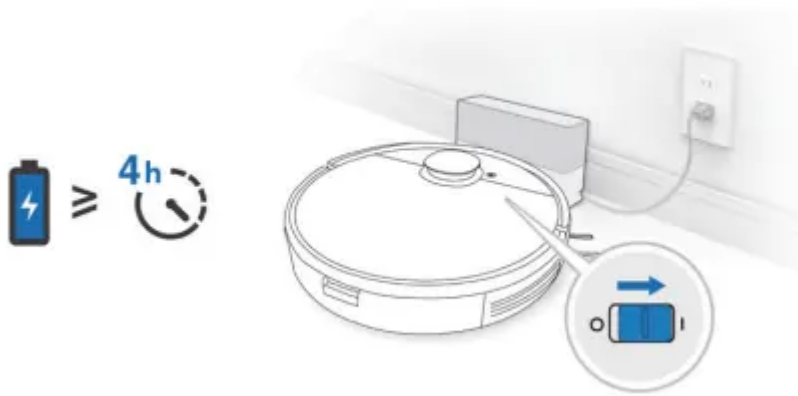
### 2. Power ON



**Note:** I = ON, O = OFF.

DEEBOT cannot be charged when being powered OFF.

### 3. Charge DEEBOT



**Note:** When DEEBOT completes the cleaning cycle or when the battery gets low, DEEBOT automatically returns to the Docking Station to recharge itself. DEEBOT can also be sent back to the Docking Station at any time by using the ECOVACS App or by pressing the AUTO Button on the robot for 3 seconds.

Empty remaining water from the Reservoir and remove the Cleaning Cloth Plate before charging DEEBOT.


## ECOVACS HOME App

To enjoy all available features, it is recommended to control your DEEBOT via the ECOVACS HOME app.

### Before you start, make sure that:

- Your mobile phone is connected to a Wi-Fi network.
- The 2.4GHz band wireless signal is enabled on your router.
- The Wi-Fi indicator light on DEEBOT is slowly flashing.

### Wi-Fi Indicator Light

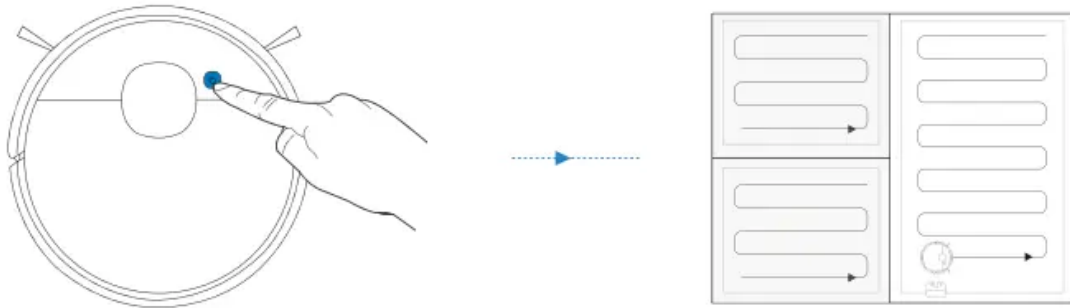
	Slowly flashing	Disconnected to Wi-Fi or waiting for Wi-Fi connection
	Rapidly flashing	Connecting to Wi-Fi
	Solid	Connected to Wi-Fi

**Tips:** If you have any problems during the Wi-Fi setup process, refer to the Troubleshooting > Wi-Fi Connection section in this manual.

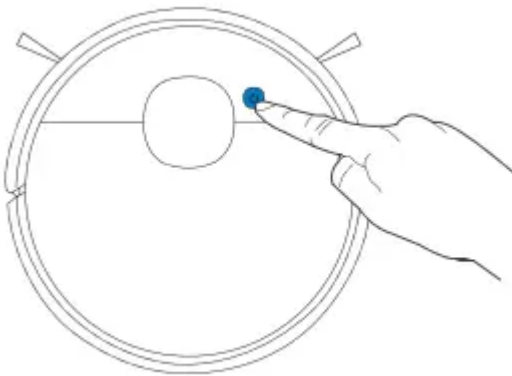
## Operating DEEBOT

During the first cleaning, please supervise DEEBOT and assist it should there be a problem.

### 1. Start



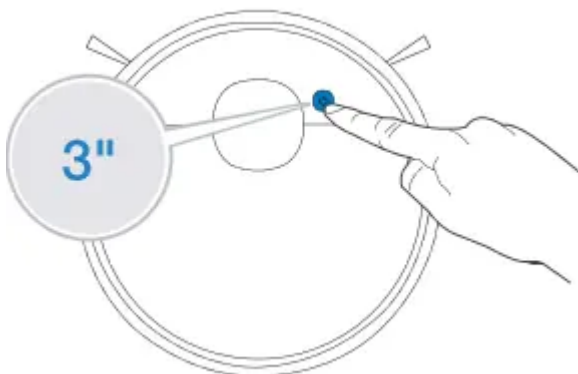
### 2. Pause



**Note:** The robot's Control Panel stops glowing after the robot is paused for a few minutes. Press the AUTO Mode Button on DEEBOT to wake up the robot.

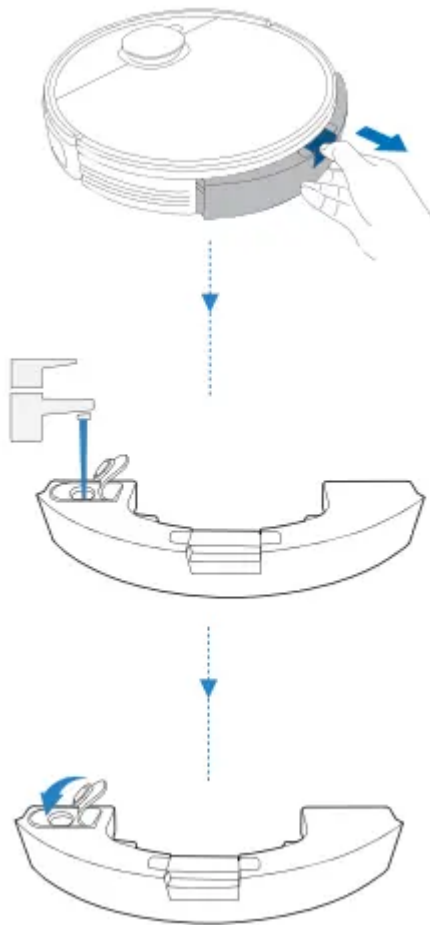
### 3. Return to Charge

Pressing  for 3 seconds to send DEEBOT back to the Docking Station.

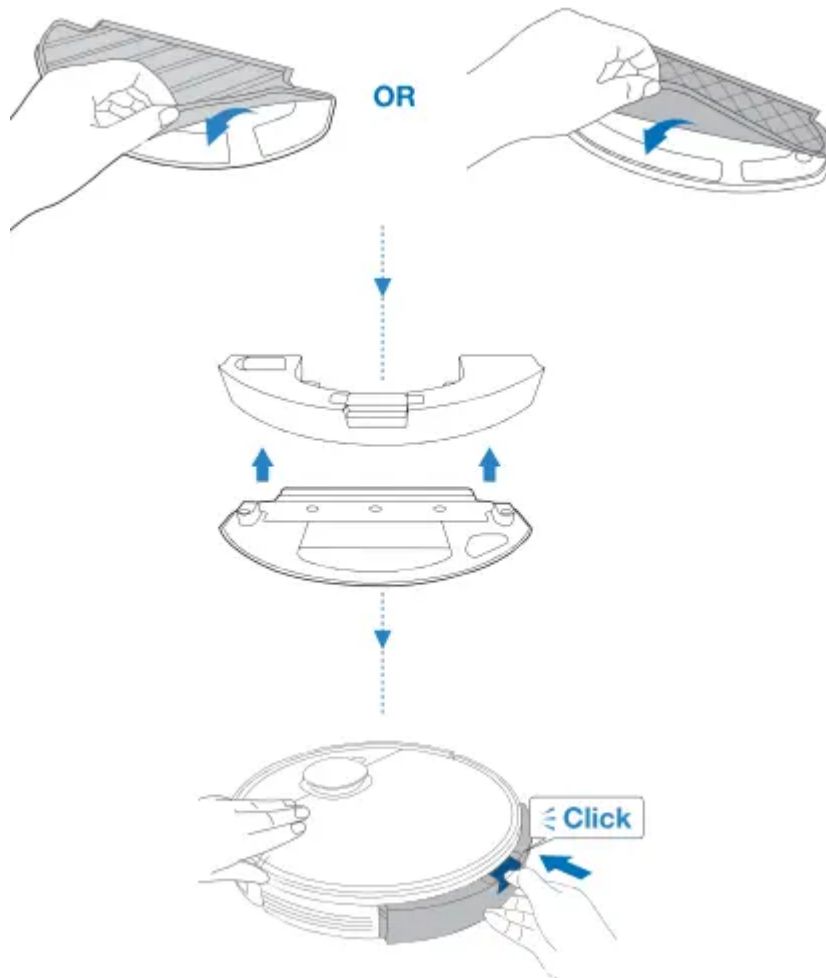


## OZMO Mopping System

1. **Note:** To prolong the service life of the reservoir, it is recommended to use purified water or softened water for OZMO mopping system.



2. **Note:** When DEEBOT is mopping, DEEBOT automatically detects the carpet and keeps away from it. If you need to clean the carpet, please uninstall the cleaning cloth plate first.



## Maintenance

### Regular Maintenance

To keep DEEBOT running at peak performance, perform maintenance tasks and replace parts with the following frequencies:

Robot Part	Maintenance Frequency	Replacement Frequency
Disposable Cleaning Cloth	/	After each use
Washable/Reusable Microfiber Cleaning Cloth	After each use	Every 50 washes
Reservoir/Cleaning Cloth Plate	After each use	/
Side Brush	Once every 2 weeks	Every 3-6 months
Main Brush	Once per week	Every 6-12 months
Sponge Filter/ High Efficiency Filter	Once per week	Every 3-6 months
LDS Laser Distance Sensor Universal Wheel Anti-Drop Sensors Bumper Charging Contacts Docking Station Pins	Once per week	/

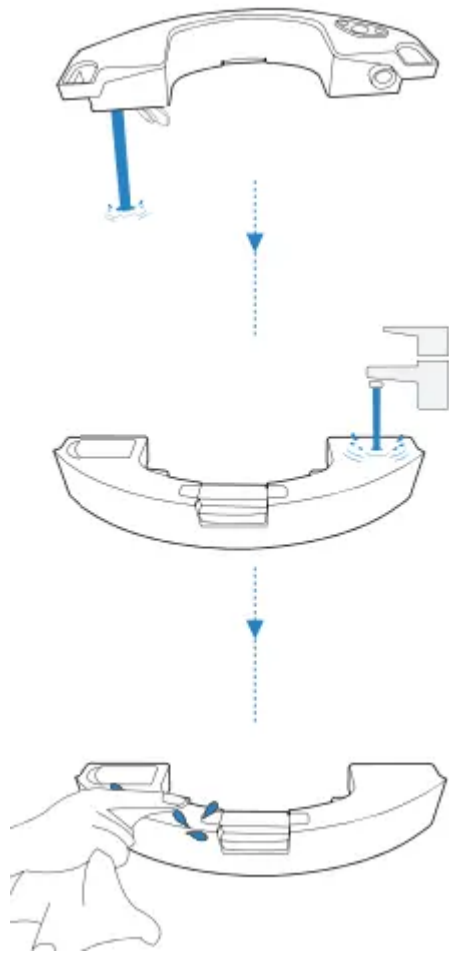
**A multi-function Cleaning Tool is provided for easy maintenance. Handle with care, this cleaning tool has sharp edges.**

**Note:** ECOVACS manufactures various replacement parts and fittings. Please contact Customer Service for more information on replacement parts.

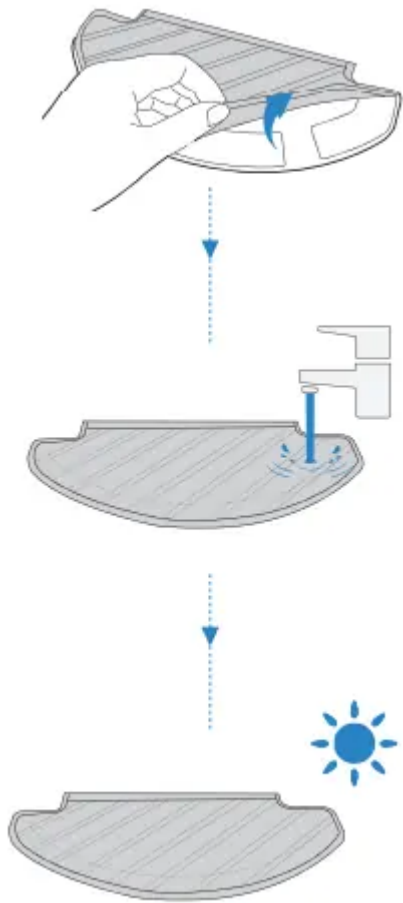
## **OZMO Mopping System**

Before performing cleaning and maintenance tasks on DEEBOT, turn the robot OFF and unplug the Docking Station.

**1.**



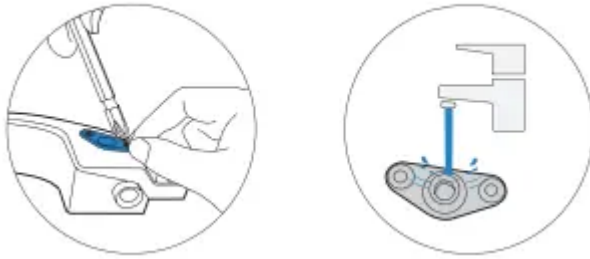
## 2. Washable/Reusable Microfiber Cleaning Cloth



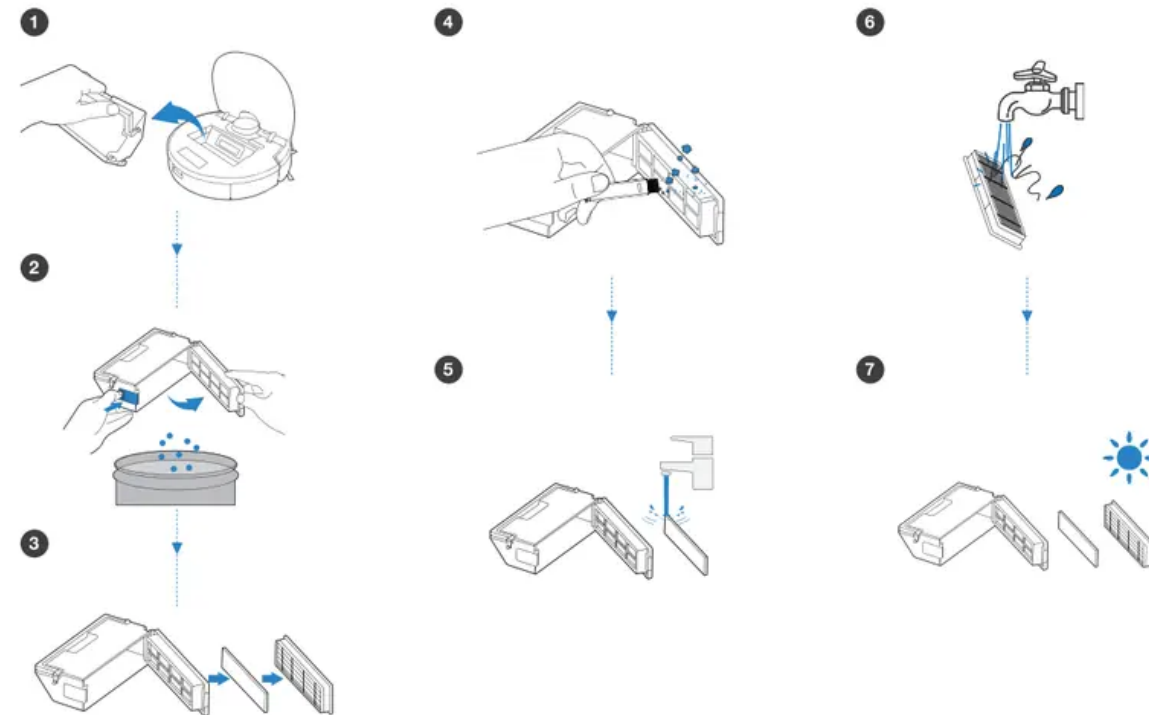
### Disposable Cleaning Cloth



**Caution!** Clean the water inlet filter on the bottom of the Reservoir if it is clogged.



## Dust Bin and Filters



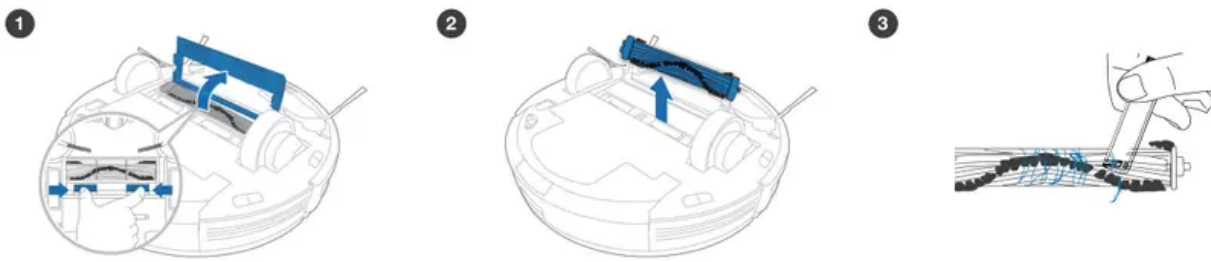
### Note:

1. Please rinse the filter with water as shown above.
2. Do not use finger or brush to clean the filter.
3. Be sure to dry out the filter for at least 24 hours after washing.

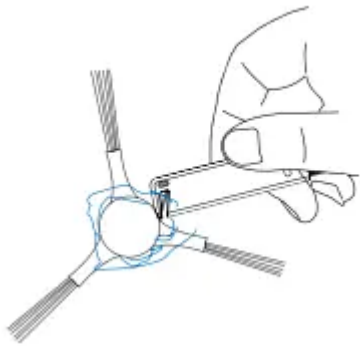
## Main Brush and Side Brushes

**Note:** A Multi-Function Cleaning Tool is provided for easy maintenance. Handle with care, this cleaning tool has sharp edges.

### Main Brush



### Side Brushes



### Other Components

**Note:** Before cleaning the robot's Charging Contacts and Docking Station Pins, turn the robot OFF and unplug the Docking Station.



### Indicator Light

DEEBOT will tell you something is wrong with an indicator light and voice report. More detailed support is available through the ECOVACS HOME and online website.

Indicator Light	Scenario
AUTO Mode Button glows a solid WHITE.	The robot is cleaning.
	The robot is paused while cleaning.
AUTO Mode Button flashes WHITE.	The robot is charging.
	The robot is starting.
	The robot is relocating.
AUTO Mode Button glows a solid RED.	The robot has low battery.
AUTO Mode Button flashes RED.	The robot has a problem.



# Troubleshooting

## Troubleshooting



No.	Malfunction	Possible Causes	Solutions
		DEEBOT is not switched ON.	Switch ON DEEBOT.
		DEEBOT has not connected to the Docking Station.	Be sure that the robot's Charging Cord have connected to the Docking Station.
1	DEEBOT is not charging.	The Power Cord is not connected to the Docking Station.	Make sure the Power Cord is firmly connected to the Docking Station.
		The battery is completely discharged.	Re-activate the battery. Switch ON DEEBOT on the Docking Station by remove after charging for 3 minutes, 3 times; then charge normally.
		The Docking Station is not connected to the power supply.	Make sure the Docking Station is connected to the power supply.
2	DEEBOT cannot return to the Docking Station.	The Docking Station is not correctly placed.	Refer to section 3.3 to correctly place the Docking Station.
3	DEEBOT gets stuck while working and stops.	DEEBOT is tangled with something on the floor (electrical wires, curtains, carpet fringing, etc.).	DEEBOT will try various ways to free itself. If it is unsuccessful, manually remove the obstacles and restart.
4	DEEBOT returns to the Docking Station before it has finished cleaning.	When the battery gets low, DEEBOT automatically switches to Return to Charger Mode and returns to the Docking Station to recharge itself.	This is normal. No solution necessary.
		Working time varies according to floor surface, room complexity and the Cleaning Mode selected.	This is normal. No solution necessary.
5	DEEBOT does not clean automatically at the scheduled time.	Time Scheduling function is cancelled.	Program DEEBOT to clean at specific time using the ECOVACS App.

		The Continued Cleaning function is turned ON and DEEBOT has just finished cleaning the scheduled cleaning area.	This is normal. No solution necessary.
		DEEBOT is switched OFF.	Switch ON DEEBOT.
		The robot's battery is low.	Keep DEEBOT switched ON and go to the Docking Station to make sure full battery to work at any time.
		The robot's Suction Intake is blocked and/or there is debris stuck in its components.	Power OFF DEEBOT, clean the Dust Inlet, invert the robot. Clean the robot's Suction Intake, Side Brushes and the Main Brush as described in section 4.
6	DEEBOT does not clean the whole area.	The cleaning area is not tidy.	Remove small objects from the floor and tidy up the cleaning area before DEEBOT starts cleaning.
7	The water is not coming out of the Reservoir when DEEBOT is mopping.	The water inlet filter on the bottom of Reservoir is clogged.	Unscrew the water inlet on the bottom of Reservoir and clean the filter.
		The Reservoir runs out of water.	Add water into the Reservoir.
		The water outlets on the bottom of DEEBOT are clogged.	Check the water outlets on the bottom of DEEBOT and clean.
8	DEEBOT is not able to connect to the home Wi-Fi network.	Incorrect home Wi-Fi username or password entered.	Enter the correct home Wi-Fi username and password.
		DEEBOT is not within range of your home Wi-Fi signal.	Make sure DEEBOT is within range of your home Wi-Fi signal.
		Network setup started before DEEBOT was ready.	Turn ON Power Switch. Press the Reset Button for 3 seconds. DEEBOT is ready to connect to the home Wi-Fi network.



network setup when it plays a music  
and its Wi-Fi Indicator light flashes s

## Wi-Fi Connection

Before Wi-Fi setup, make sure DEEBOT, mobile phone, and Wi-Fi network meet the following requirements.

### DEEBOT and Mobile Phone Requirements

- DEEBOT is fully charged and the power switch of DEEBOT is turned on.
- Wi-Fi status light slowly flashes.
- Turn off mobile phone's cellular data (you can turn it back on after setup).

### Wi-Fi Network Requirements

- You are using a 2.4GHz or 2.4/5 GHz mixed network.
- Your router supports 802.11 b/g/n and IPv4 protocol.
- Do not use a VPN (Virtual Private Network) or Proxy Server.
- Do not use a hidden network.
- WPA and WPA2 using TKIP, PSK, AES/CCMP encryption.
- WEP EAP (Enterprise Authentication Protocol) is not supported.
- Use Wi-Fi channels 1-11 in North America and channels 1-13 outside North America (refer to local regulatory agency).
- If you are using a network extender/repeater, the network name (SSID) and password are the same as your primary network.

## Technical Specifications

<b>Model</b>	<b>DLN12</b>		
Rated Input	20V = 1A		
<b>Docking Station Model</b>	<b>CH1822</b>		
Rated Input	100-240V ~ 50-60HZ 0.5A	Rated Output	20V = 1A

Output power of the Wi-Fi module is less than 100mW.

**Note:** Technical and design specifications may be changed for continuous product improvement.

**Warning**

This content is compiled from multiple sources and is provided for reference purposes only. It may not be complete or fully applicable to all situations. If you are unable to resolve your issue, please contact the product manufacturer or an authorized service provider for official support.

---

Document generated by [ManualsFile](#)