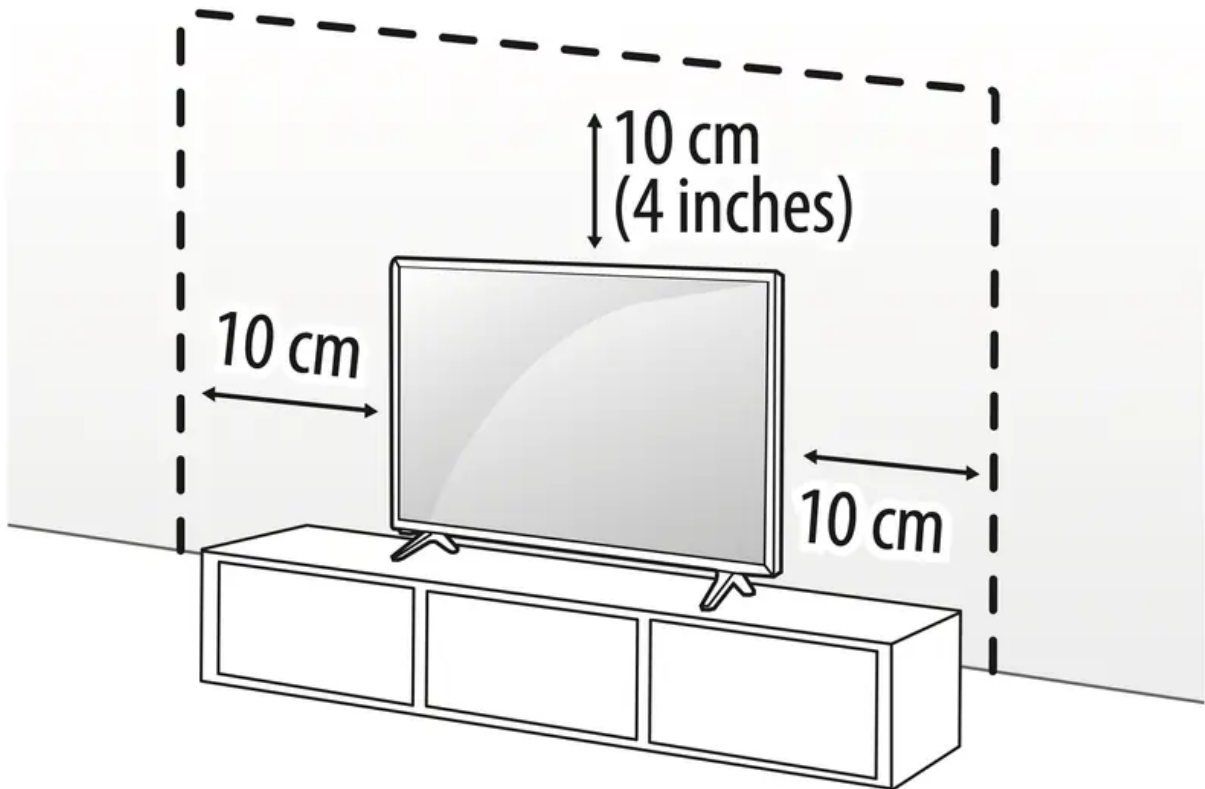


PREPARING

Mounting on the Table

1. Lift and tilt the TV into its upright position on a table.
Leave a minimum of 10 cm (4 inches) space from the wall for proper ventilation.
2. Connect the power cord to a wall outlet.



(Depending upon model)

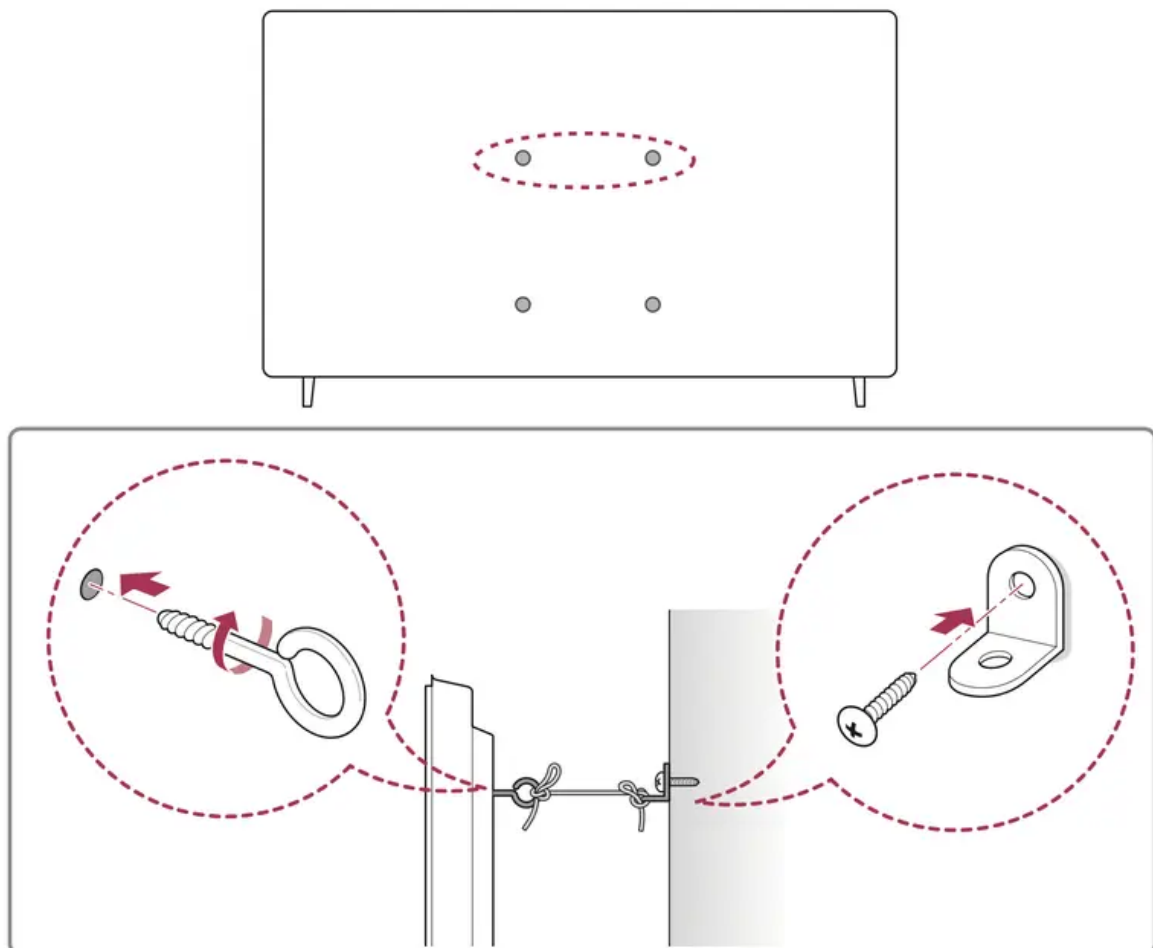
WARNING:

- Do not apply foreign substances (oils, lubricants, etc.) to the screw parts when assembling the product.
- (Doing so may damage the product.)
- If you install the TV on a stand, you need to take actions to prevent the product from overturning. Otherwise, the product may fall over, which may cause injury.
- Do not use any unapproved items to ensure the safety and product life span.
- Any damage or injuries caused by using unapproved items are not covered by the warranty.

- Make sure that the screws are fastened tightly. (If they are not fastened securely enough, the TV may tilt forward after being installed.)
- Do not fasten the screws with excessive force otherwise they may strip and become loose.

Securing TV to the Wall

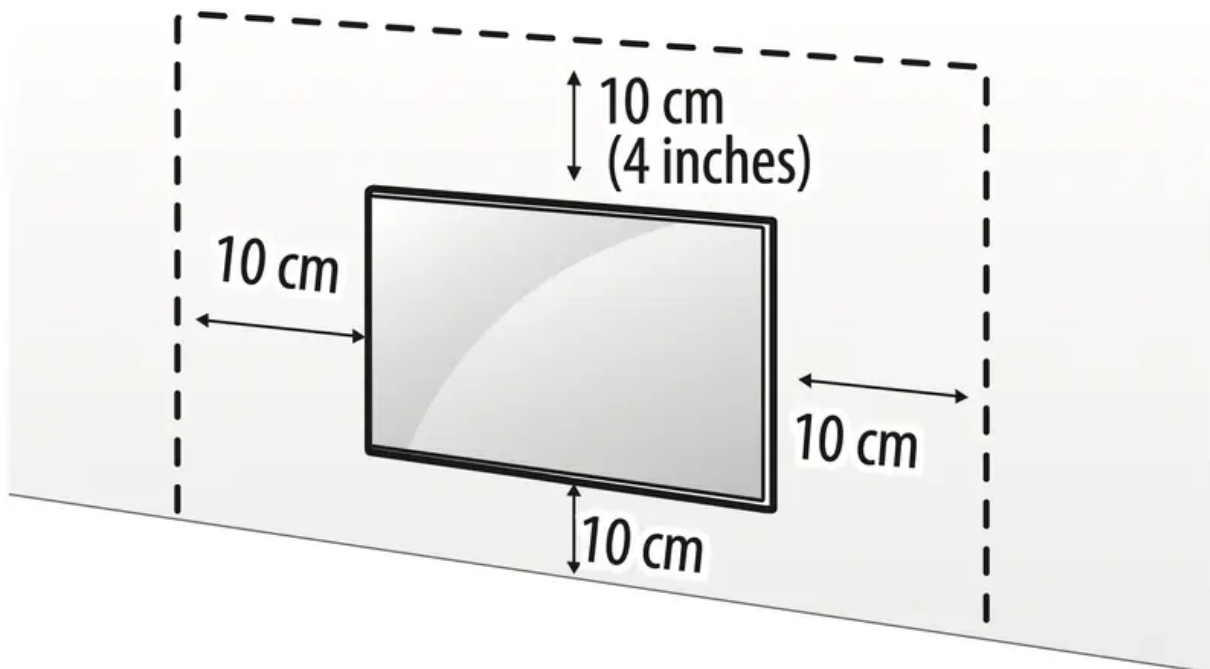
1. Insert and tighten the eye-bolts, or TV brackets and bolts on the back of the TV.
If there are bolts inserted at the eye-bolts position, remove the bolts first.
2. Mount the wall brackets with the bolts to the wall. Match the location of the wall bracket and the eye-bolts on the rear of the TV.
3. Connect the eye-bolts and wall brackets tightly with a sturdy rope. Make sure to keep the rope horizontal with the flat surface.
Use a platform or cabinet that is strong and large enough to support the TV securely.
Brackets, bolts and ropes are not provided. You can obtain additional accessories from your local dealer.



(Depending upon model)

Mounting to the Wall

An optional wall mount can be used with your LG Television. Consult with your local dealer for a wall mount that supports the VESA standard used by your TV model. Carefully attach the wall mount bracket at the rear of the TV. Install the wall mount bracket on a solid wall perpendicular to the floor. If you are attaching the TV to other building materials, please contact qualified personnel to install the wall mount. Detailed instructions will be included with the wall mount. We recommend that you use an LG brand wall mount. The LG wall mount is easy to adjust or to connect the cables. When you do not use LG's wall mount bracket, use a wall mount bracket where the device is adequately secured to the wall with enough space to allow connectivity to external devices. If you are using a non-adjustable mount, attach the mount to the wall. Attach the cables to the TV first, then attach the TV to the mount.

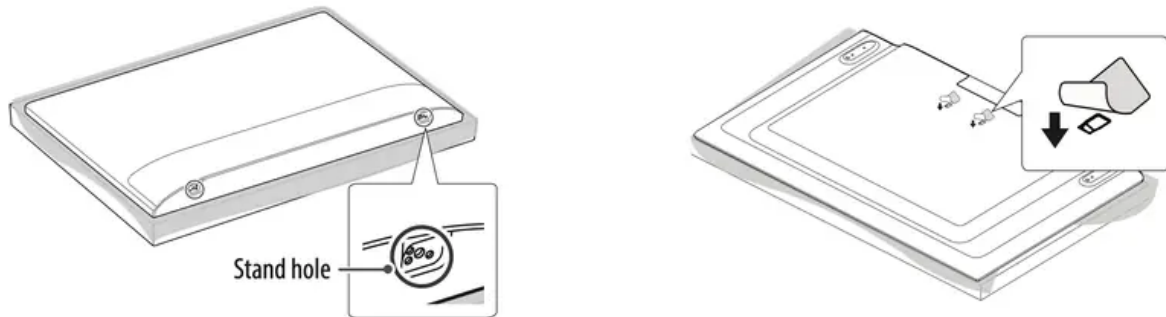


(Depending upon model)

WARNING:

- Remove the stand before installing the TV on a wall mount by performing the stand attachment in reverse.
- For more information of screws and wall mount bracket, refer to the Separate purchase.
- If you intend to mount the product to a wall, attach VESA standard mounting interface (optional parts) to the back of the product. When you install the set to use the wall mounting bracket (optional parts), fix it carefully so as not to drop.
- When mounting a TV on the wall, make sure not to install the TV by hanging the power and signal cables on the back of the TV.

- Do not install this product on a wall if it could be exposed to oil or oil mist. This may damage the product and cause it to fall.
- When installing the wall mounting bracket, it is recommended to cover the stand hole using tape, in order to prevent the influx of dust and insects, (Depending upon model).

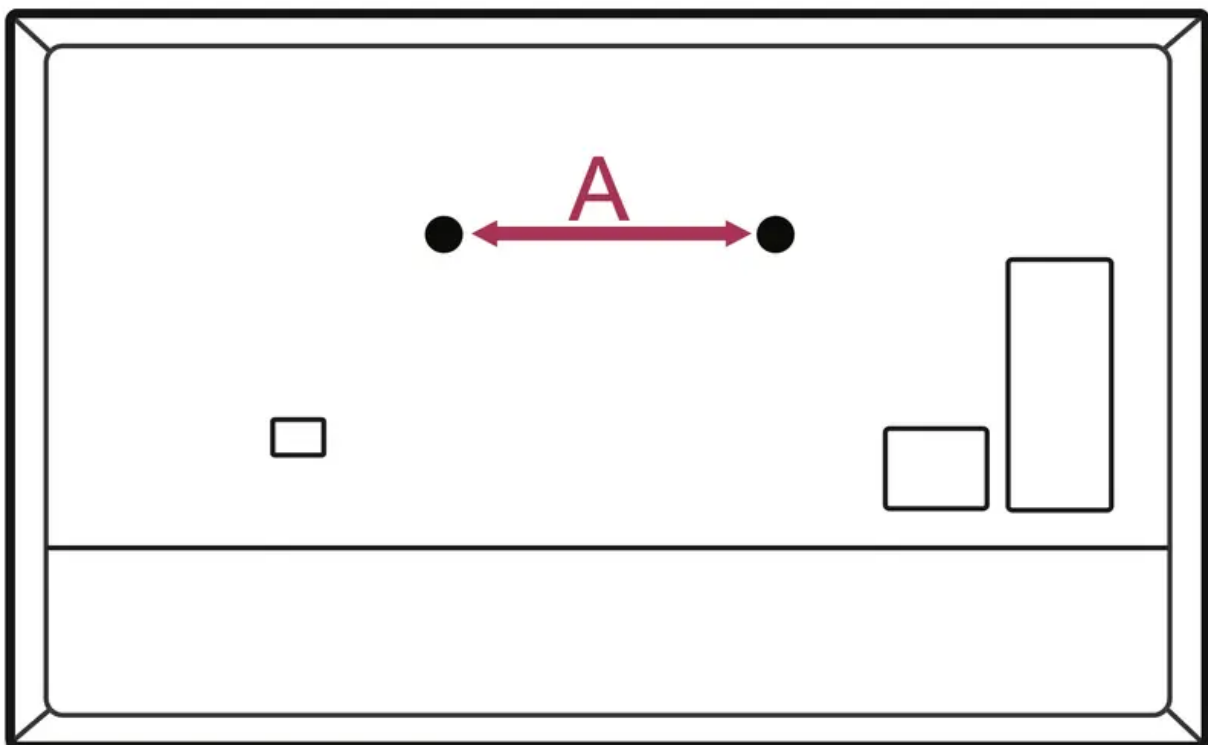


(Depending on model)

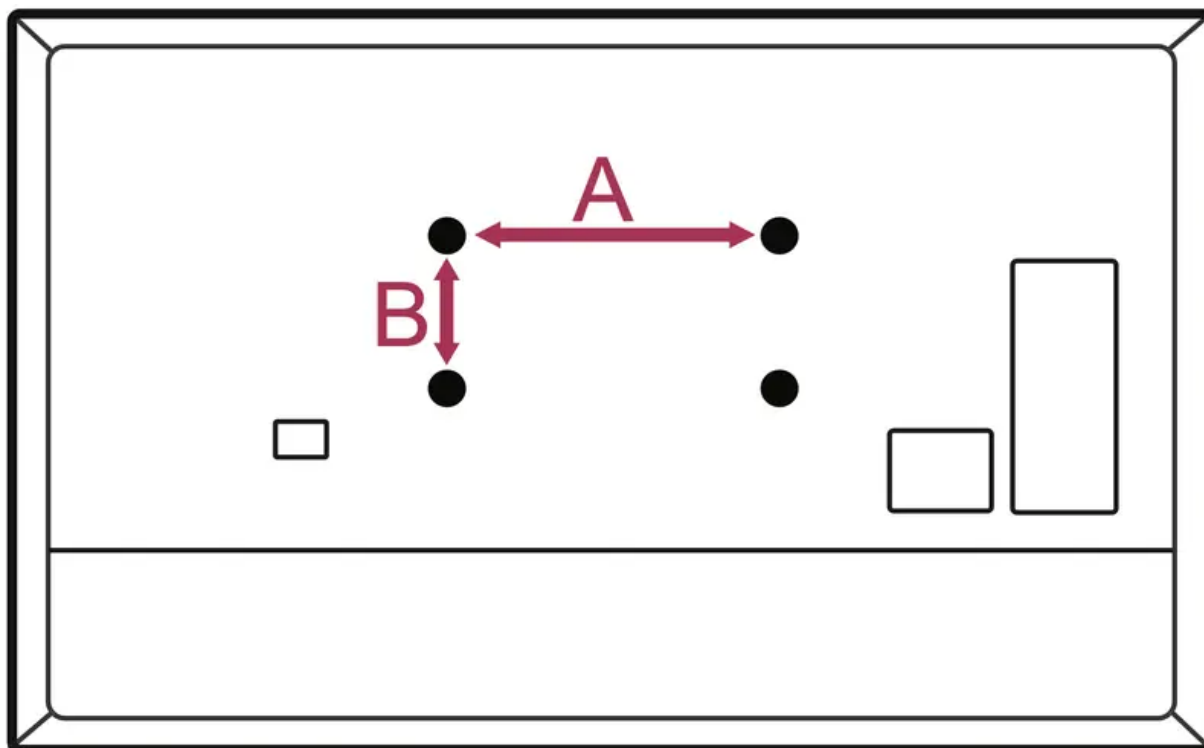
Wall Mounting Bracket

(Depending upon model)

Make sure to use screws and wall mount bracket that meet the VESA standard. Standard dimensions for the wall mount kits are described in the following table.



Model	43/50UP77*	55/60/65UP77*
	43/50UP80*	55/60/65UP80*
Screws distance (A) (mm)	200	300
Standard screw	M6	M6
Number of screws	2	2
Wall mount bracket (Optional)	WB21LMB	WB21LMB

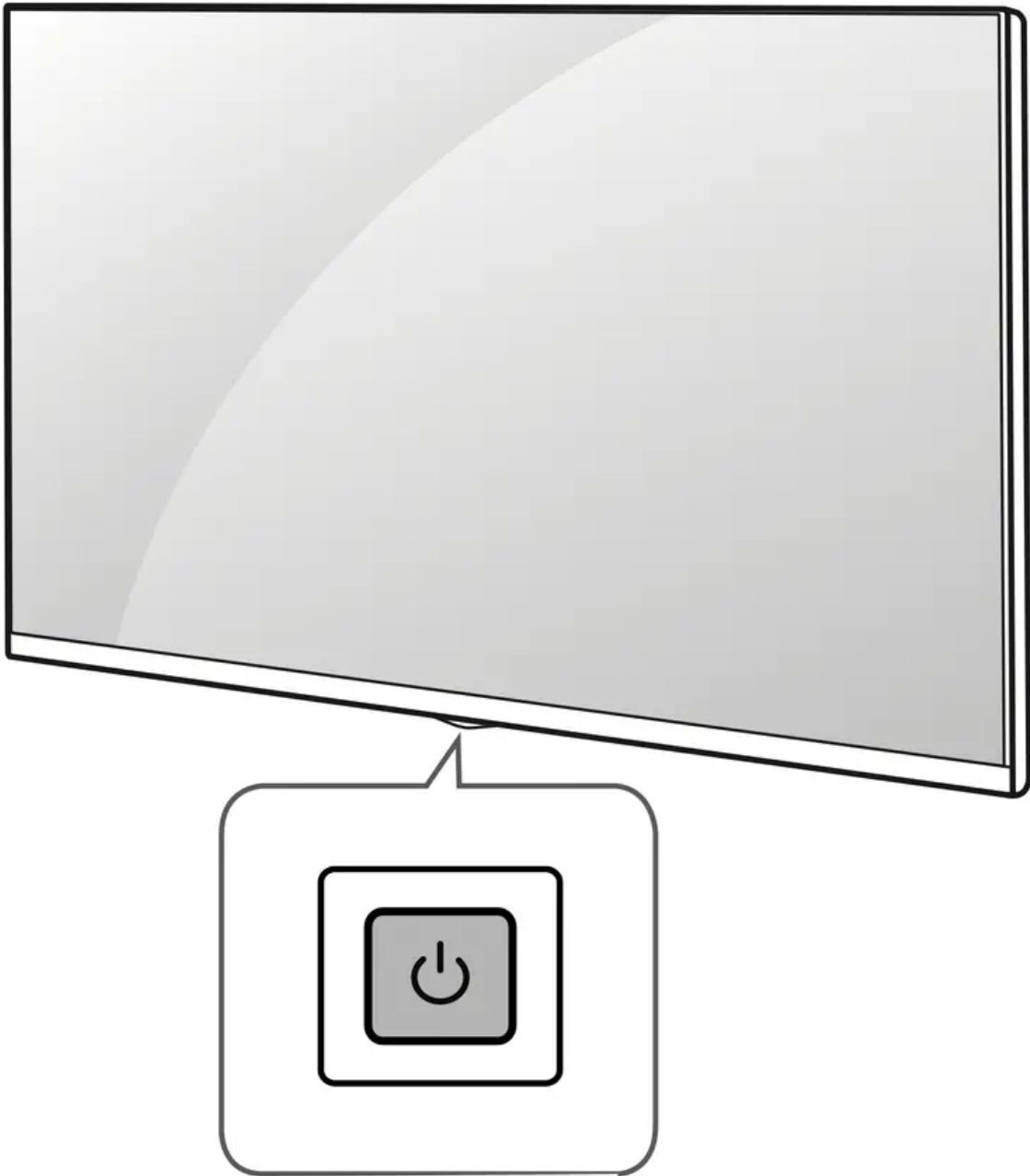


Model	43/50UP71*	55UP71*	65UP71*	70/75UP77*	70/75UP70*
	43/50UP75*	55UP75*	65UP75*		70/75UP71*
	43/50UP77*	55UP77*	60/65UP77*	70/75UP80*	70/75UP75*
	43/50UP80*	55UP80*	60/65UP80*		82/86UP87*
	VESA (A x B) (mm)	200 x 200	300 x 300	300 x 300	400 x 400
Standard screw	M6	M6	M6	M6	M8
Number of screws	4	4	4	4	4
Wall mount bracket	LSW240B MSW240	OLW480B MSW240	OLW480B	LSW440B	LSW640B

STARTING TV

Turning on the TV

You can simply operate the TV functions, using the button.



Using button

Power On (Press)

Power Off¹) (Press and Hold)

Menu Control (Press²)

Menu Selection (Press and Hold³)

1. All running apps will close.
2. You can access and adjust the menu by pressing the button when TV is on.
3. You can use the function when you access menu control.

NOTE: When the TV is turned on for the first time after being shipped from the factory, initialization of the TV may take approximately one minute.

Adjusting the menu

When the TV is turned on, press the button one time. You can adjust the Menu items using the button.



NOTE:

- Your TV's OSD (On Screen Display) may differ slightly from that shown in this manual.
- The available menus and options may differ from the input source or product model that you are using.
- New features may be added to this TV in the future.
- The device must be easily accessed to a location outlet near the access. Some devices are not made by turning on / off button, turning off the device and unplugging the power cord.

Registering Magic Remote Control

How to register the Magic Remote Control

To use the Magic Remote, first pair it with your TV.

1. Put batteries into the Magic Remote and turn the TV on.
2. Point the Magic Remote at your TV and press the **Wheel (OK)** on the remote control.

* If the TV fails to register the Magic Remote, try again after turning the TV off and back on.

How to deregister the Magic Remote Control

Press the **(Back)** and **(Home)** buttons at the same time, for five seconds, to unpair the Magic Remote with your TV.

* Press and hold the **(Home)** and **(Q. Settings)** buttons for more than 5 seconds to disconnect and re-register the Magic Remote at the same time.

CAUTION! It is recommended that an Access Point (AP) be located more than 0.2 m (0.65 ft) away from the TV. If the AP is installed closer than 0.2 m (0.65 ft), the Magic remote control may not perform as expected due to frequency interference.

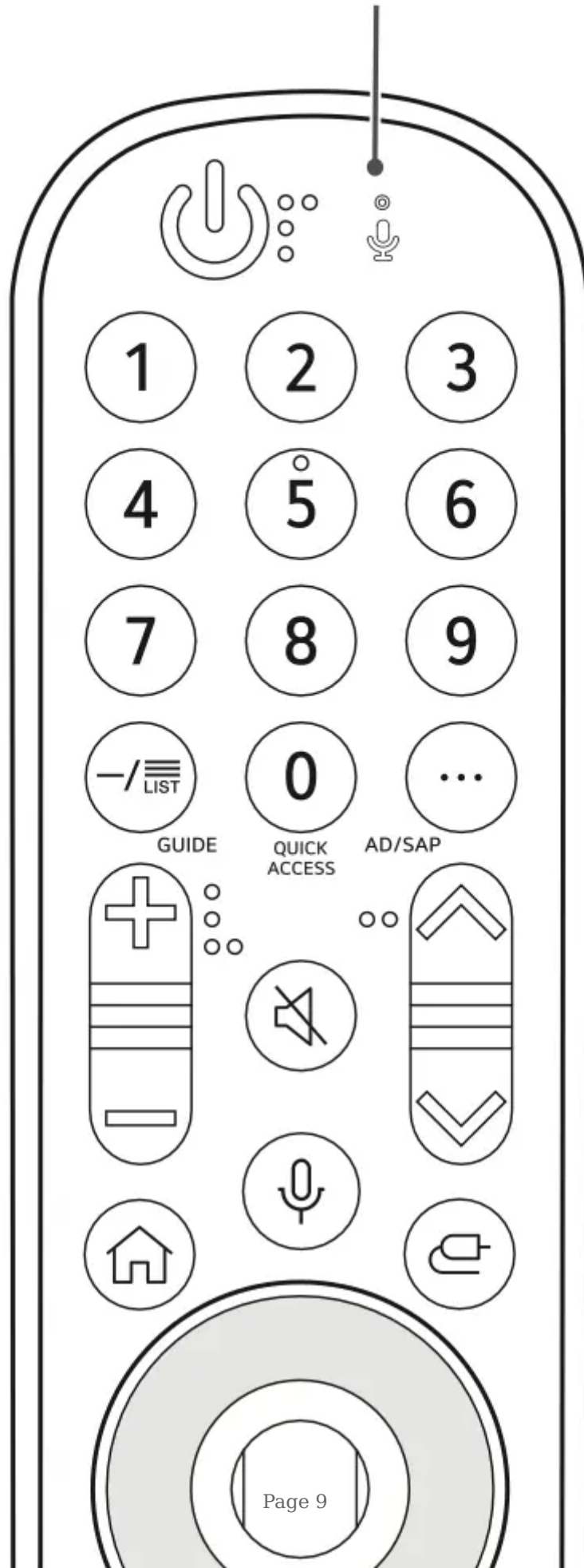
USING REMOTE CONTROL

Using Magic Remote Control

(Depending on model)

The descriptions in this manual are based on the buttons on the remote control. Please read this manual carefully and use the TV correctly.

Microphone





Power Turns the TV on or off.



(Dash) — Inserts a — between numbers such as 2-1 and 2-2.



LIST Accesses the saved channel list.

GUIDE**

Accesses the [Guide].

QUICK ACCESS**

Accesses the [Edit Quick Access]. [Edit Quick Access] is a feature that allows you to enter a specified app or Live TV directly by pressing and holding the number buttons.



Volume buttons Adjusts the volume level.



Channel buttons Scrolls through the saved channels.



Home Accesses the Home menu.



Home Launches the last used apps



Input Changes the input source.



Input Accesses the [Home Dashboard].



Wheel (OK) Press the center of  button to select a menu. You can change channels

by using  button.



Wheel (OK) Accesses the [Magic Explorer]. You can run the [Magic Explorer] feature when the pointer color is changed to purple. If watching a program, press and hold down the pointer onto the video. When using [TV Guide], [Settings], [Sports Alert], or [Art Gallery], press and hold down on the text.

Number buttons Enters numbers.



**

Accesses the [Quick Help].



More actions Displays more remote control functions.

AD/SAP**

SAP (Secondary Audio Program) feature can also be enabled by pressing the

button.



Mute Mutes all sounds.



**

Mute Accesses the [Accessibility] menu.



Voice recognition Network connection is required to use the voice recognition function.

Check for recommended content. (Some recommended services may not be available in some countries.)




**

Voice recognition Speak while pressing and holding the button to use the voice recognition feature.



Up/Down/Left/Right Press the up, down, left or right button to scroll the menu. If you

press  buttons while the pointer is in use, the pointer will disappear from the screen and Magic Remote will operate like a general remote control. To display the pointer on the screen again, shake Magic Remote to the left and right.



Q. Settings Accesses the Quick Settings.



**

Q. Settings Displays the [All Settings] menu.

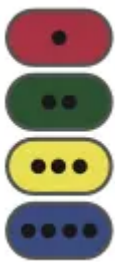


Back Returns to the previous level.



**

Back Clears on-screen displays and returns to last input viewing.



These access special functions in some menus.



**

Red button Runs the record function.

1

Streaming Service buttons Connects to the Video Streaming Service.

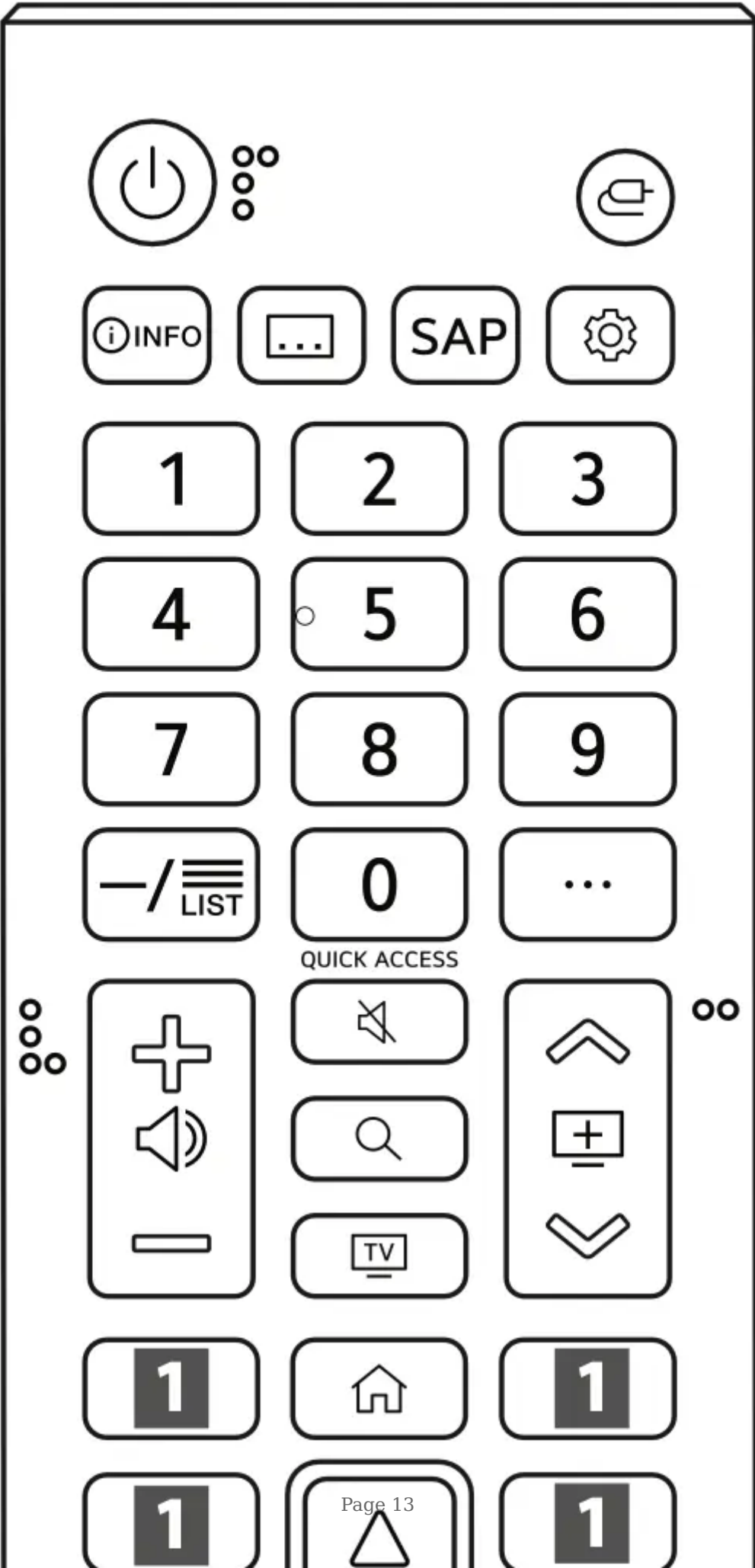
(Some buttons and services may not be provided depending on models or regions.)

NOTE: **To use the button, press and hold for more than 1 second.

Using Remote Control

(Depending upon model)

The descriptions in this manual are based on the buttons on the remote control. Please read this manual carefully and use the TV correctly.





Power Turns the TV on or off.



(Dash) Inserts a **—** between numbers such as 2-1 and 2-2.



Accesses the

saved channel list.



Displays the program event according to time scheduler.



Shows information on the current program.



Recalls your preferred subtitle in digital mode.



Enables SAP (Secondary Audio Program) Feature.

QUICK ** ACCESS

Accesses the [Edit Quick Access]. [Edit Quick Access] is a feature that allows you to enter a specified app or Live TV directly by pressing and holding the number buttons.



Volume buttons Adjusts the volume level.



Channel buttons Scrolls through the saved channels.



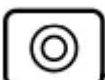
Home Accesses the Home menu..



Home Launches the last used apps.



Input Changes the input source.



OK Selects menus or options and confirms your input.

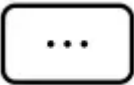


OK Accesses the [Magic Explorer]. When using [TV Guide], [Settings], [Sports Alert], or [Art Gallery], press and hold down on the text.

Number buttons Enters numbers.



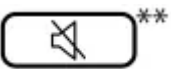
Accesses the [Quick Help].



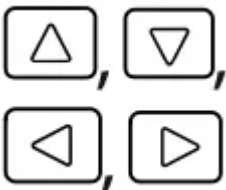
More actions Displays more remote control functions.



Mute Mutes all sounds.



Mute Accesses the [Accessibility] menu.



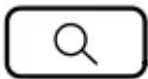
Navigation button (up / down / left / right) Scrolls through menus or options.



Q. Settings Accesses the Quick Settings



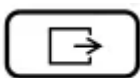
Back Returns to the previous screen.



Search Check for recommended content. (Some recommended services may not be available in some countries.)



Shows the search mode. You can watch TV or LG Channels.



Clears on-screen displays and returns to last input viewing.



Control buttons Control buttons for media contents.



These access special functions in some menus.



Starts to record. (Only Time Machine Ready supported model)



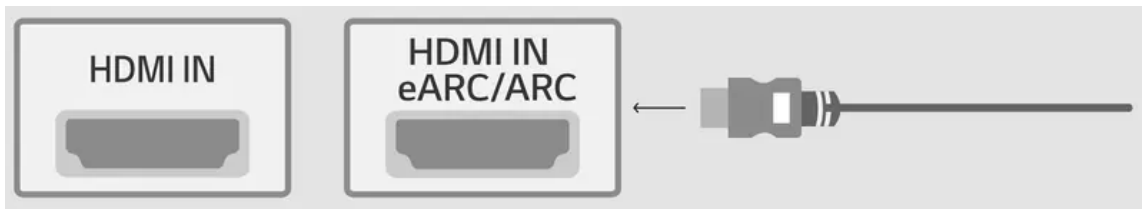
Streaming Service buttons Connects to the Video Streaming Service.

CONNECTIONS

You can connect various external devices to the TV. For more information on external device's connection, refer to the manual provided with each device. Connect your TV to external devices. For the best picture and audio quality, connect the external device and the TV with the HDMI cable.

HDMI

- When connecting the HDMI cable, the product and external devices should be turned off and unplugged.



- HDMI Audio Supported Format: (Depending upon model)
 - True HD (48 kHz),
 - Dolby Digital / Dolby Digital Plus (32 kHz / 44.1 kHz / 48 kHz),
 - PCM (32 kHz / 44.1 kHz / 48 kHz / 96 kHz / 192 kHz)

NOTE: If the device connected to Input Port also supports HDMI Deep Color, your picture may be clearer. However, if the device doesn't support it, it may not work properly. In that case, change the TV's [HDMI Deep Color] setting to off.

→ → [General] → [Devices] → [HDMI Settings] → [HDMI Deep Colour]

(Except for 82/86UP87*)

- On: Support 4K @ 50 / 60 Hz (4:4:4, 4:2:2, 4:2:0)
- Off: Support 4K @ 50/60 Hz (4:2:0)

(For 82/86UP87*)

- On: Support 4K @ 50 / 60 Hz (4:4:4, 4:2:2, 4:2:0), <3,4 port Only> 4K @ 100 / 120 Hz (4:4:4, 4:2:2, 4:2:0)
- Off: Support 4K @ 50 / 60 Hz (4:2:0)
- This feature is available only on certain models which support HDMI Ultra HD Deep Color.

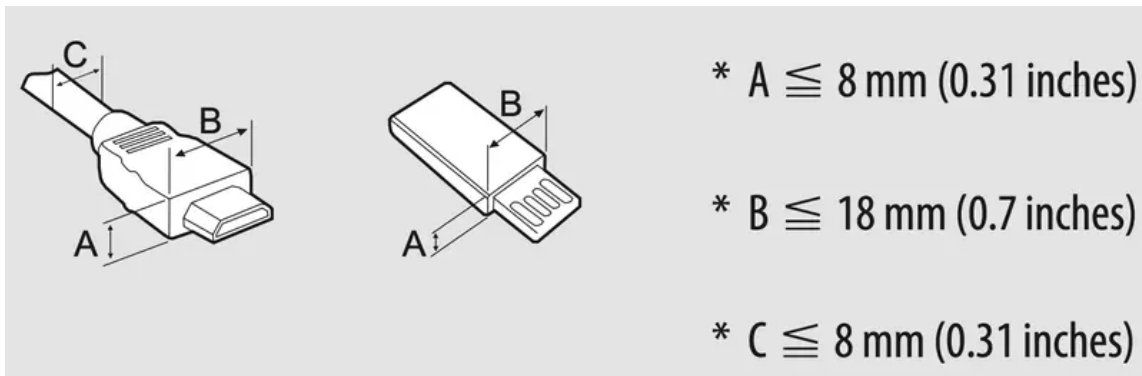
Use a certified cable with the HDMI logo attached. If you do not use a certified HDMI cable, the screen may not display or a connection error may occur.

Recommended HDMI Cable Types

Ultra High Speed HDMI®/TM cable (3 m or less)

NOTE:

- For an optimal connection, HDMI cables and USB devices should have bezels less than 8 mm (0.31 inches) thick, 18 mm (0.7 inches) width and 8 mm (0.31 inches) a wire diameter. (Depending upon model)
- Use an extension cable that supports USB 2.0 if the USB cable or USB flash drive does not fit into your TV's USB port.



External Devices

Supported external devices are: Blu-ray player, HD receivers, DVD players, VCRs, audio systems, USB storage devices, PC, gaming devices, and other external devices.

For more information on external device's connection, refer to the manual provided with each device.

NOTE:

- If you record a TV program on a Blu-ray/DVD recorder or VCR, make sure to connect the TV signal input cable to the TV through a DVD recorder or VCR. For more information about recording, refer to the manual provided with the connected device.
- The external device connections shown may differ slightly from illustrations in a manual.
- Connect external devices to the TV regardless about the order of the TV port.
- If you connect a gaming device to the TV, use the cable supplied with the gaming device.
- Refer to the external equipment's manual for operating instructions.
- In PC mode, there may be noise associated with the resolution, vertical pattern, contrast or brightness. If noise is present, change the PC output to another resolution, change the refresh rate to another rate or adjust the brightness and contrast on the [Picture] menu until the picture is clear. Depending upon the graphics card, some resolution settings may not allow the image to be positioned on the screen properly.
- Some USB Hubs may not work. If a USB device connected through a USB Hub is not detected, connect it directly to the USB port on the TV.
- When connecting via a wired LAN, it is recommended to use a CAT 7 cable.
- The TV may be capable of operating without a set-top-box from a multichannel video programming distributor (MVPD).

Remote RS-232C setup

To obtain the RS-232C external control setup information, please visit www.lg.com. Download and read the manual, (Depending upon model).

CAUTION:

- Do not drop the product or let it fall over when connecting external devices. Otherwise, this may result in injury or damage to the product.
- When connecting external devices such as video game consoles, make sure the connecting cables are long enough. Otherwise, the product may fall over, which may cause injury or damage the product.

TROUBLESHOOTING



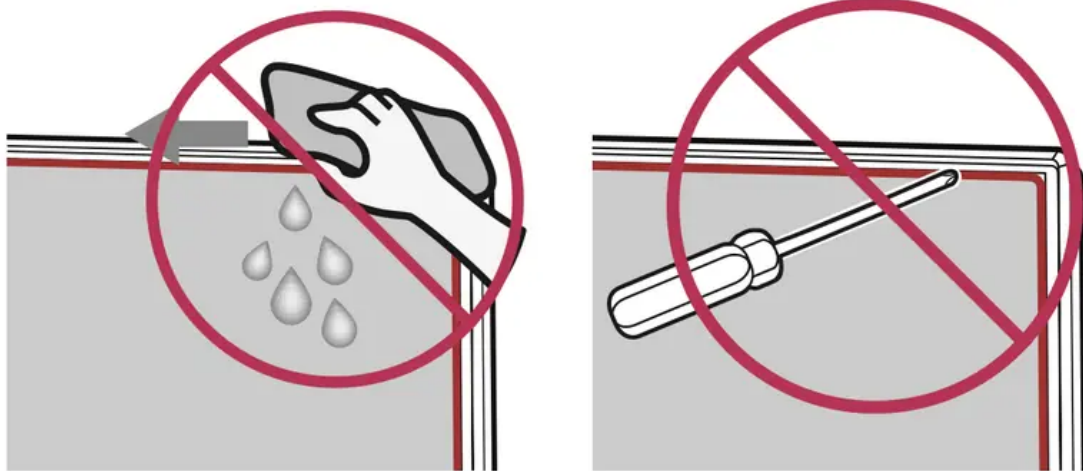
<p>Cannot control the TV with the remote control.</p>	<ul style="list-style-type: none"> • Check if anything such as tape has been placed over the receiver. • Check if there is any obstacle between the product and the remote control. • Replace the batteries with new fresh ones.
<p>No image display and no sound is produced.</p>	<ul style="list-style-type: none"> • Check if the product is turned on. • Check if the power cord is connected to a wall outlet. • Check if there is a problem in the wall outlet by connecting other products.
<p>The TV turns off suddenly.</p>	<ul style="list-style-type: none"> • Check the power control settings. The power supply may be interrupted. • Check if the auto-off function is activated in the settings menu. • If there is no signal while the TV is on, the TV will turn off automatically after 15 minutes of inactivity.
<p>Abnormal Display</p>	<ul style="list-style-type: none"> • If the TV feels cold to the touch, there may be a small flicker when it is turned on. This is normal; there is nothing wrong with TV. Some minute dot defects may be visible on the screen, appearing as tiny red, green, or blue spots. However, they have no adverse effect on the TV's performance. Avoid touching the LCD screen or holding your finger(s) against it for long periods of time. Doing so may produce some temporary distortion effects on the screen. • This panel is an advanced product that contains millions of pixels. In a very few cases, you could see fine dots on the screen while you're viewing the TV. Those dots are deactivated pixels and do not affect the performance and reliability of the TV. • Displaying a still image for a prolonged period of time may cause an image sticking. Avoid displaying a fixed image on the TV screen for a extended length of time.
<p>Generated Sound</p>	<ul style="list-style-type: none"> • Cracking noise A cracking noise that occurs when watching or turning off the TV is generated by plastic thermal contraction due to temperature and humidity. This noise is common for products where thermal deformation is required. • Electrical circuit humming/panel buzzing A low level noise is generated from a high-speed switching circuit, which supplies a large amount of current to operate a product. It varies depending upon the



product. This generated sound does not affect the performance and reliability of the product.

CAUTION:

- When cleaning the product, be careful not to allow any liquid or foreign objects to enter the gap between the upper, left or right side of the panel and the guide panel, (Depending upon model).
- Make sure to wring any excess water or cleaner from the cloth.
- Do not spray water or cleaner directly onto the TV screen.
- Make sure to spray just enough of water or cleaner onto a dry cloth to wipe the screen.



Warning

This content is compiled from multiple sources and is provided for reference purposes only. It may not be complete or fully applicable to all situations. If you are unable to resolve your issue, please contact the product manufacturer or an authorized service provider for official support.