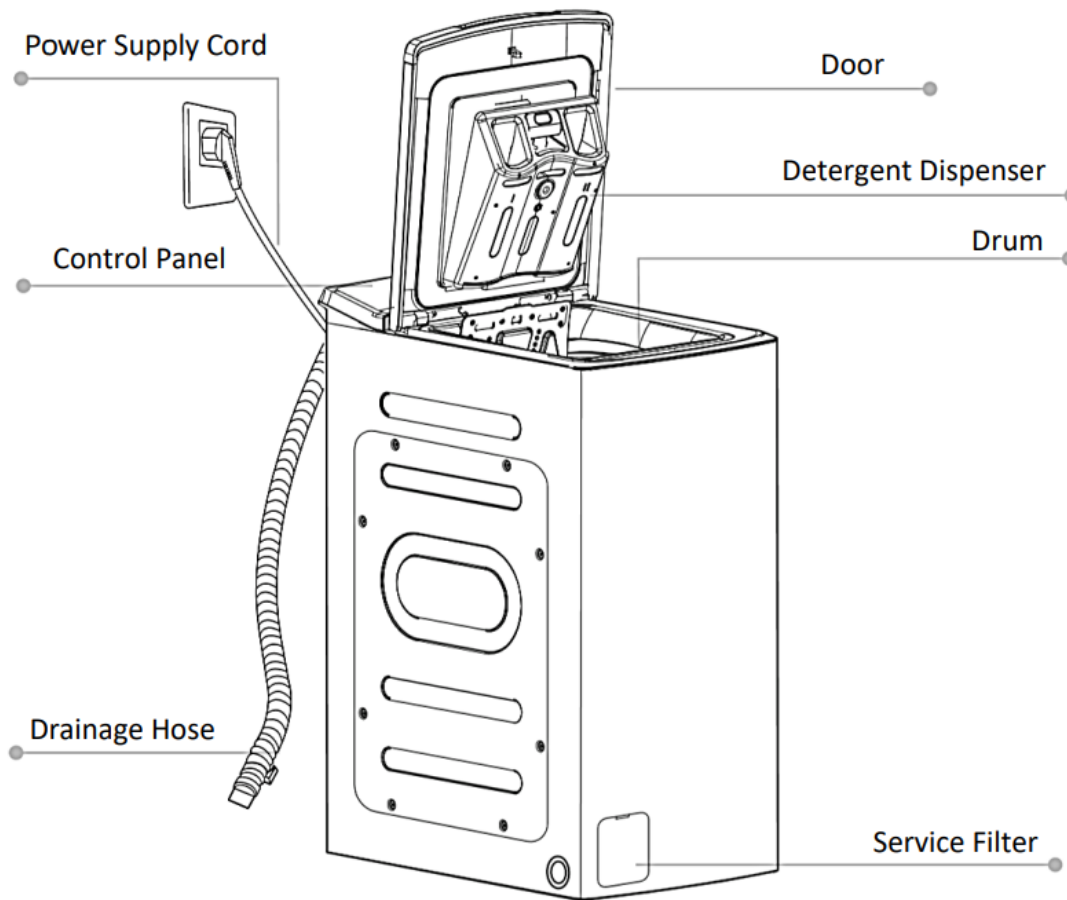


PRODUCT OVERVIEW



ACCESSORIES



Transport hole Plug



Cold Water Supply Hose

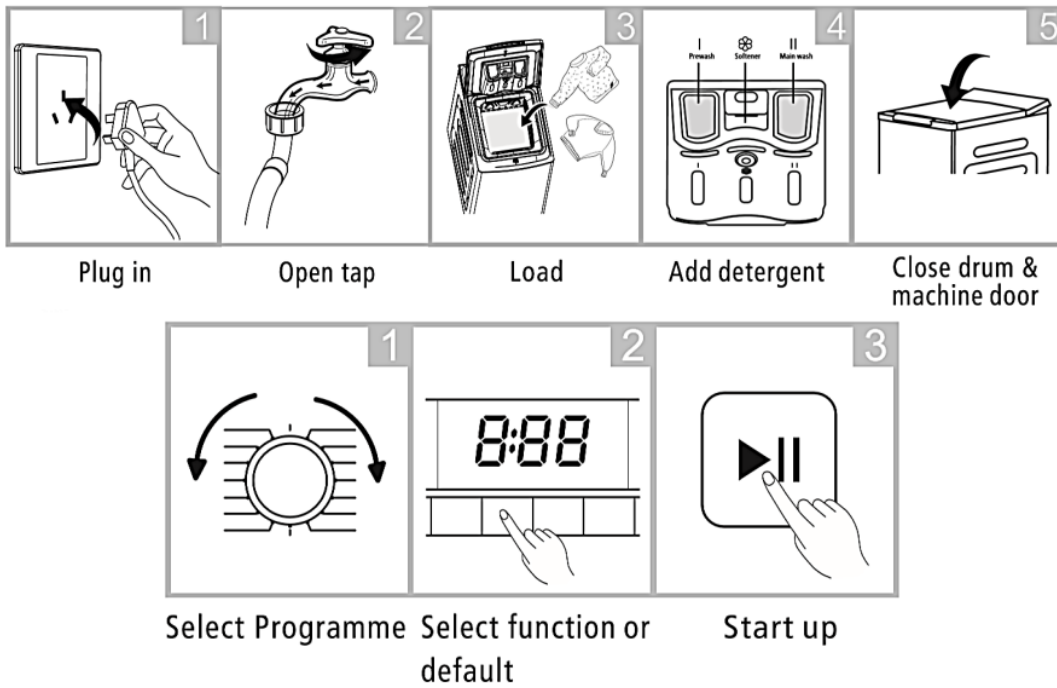


Drain Hose Support (optional)

OPERATION

Before washing, the washing machine should be operated without clothes in as follows.

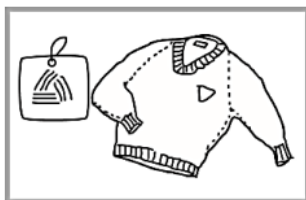




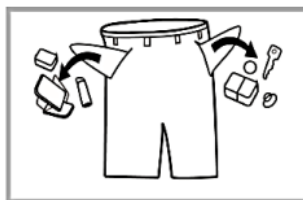
BEFORE EACH WASH

The working condition of the washer should be (0-40) °C. If used under 0°C, the inlet valve and draining system may become frozen and damaged.

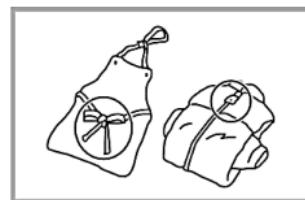
Please check the labels and the explanation of using detergent before wash. Use non-foaming or less-foaming detergent.



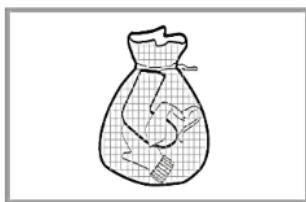
Check the label



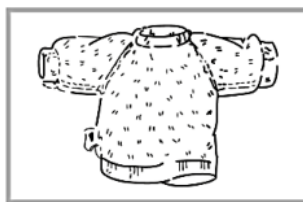
Take out the items out of the pockets



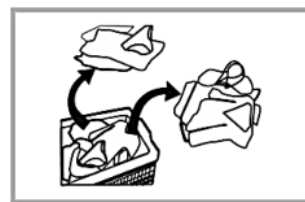
Knot the long strips, zip or button



Put small clothes into the pillow slip

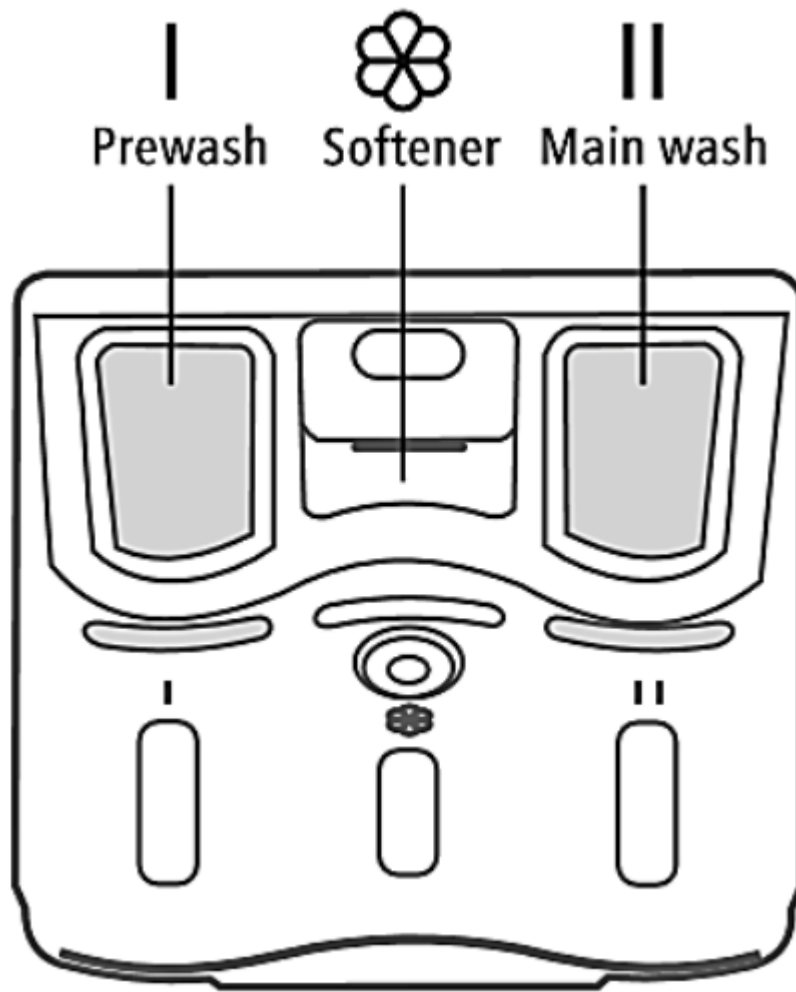


Turn easy-pilling and long-pile fabric inside out



Separate clothes with different textures

DETERGENT DISPENSER

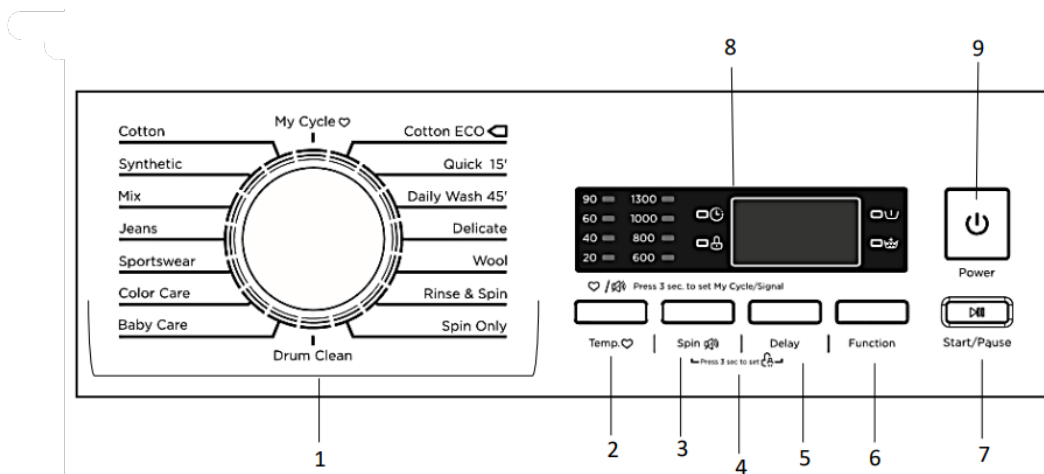


Programme			🌸	Programme			🌸
Cotton	<input type="radio"/>	<input checked="" type="radio"/>	<input type="radio"/>	Spin Only			
Synthetic	<input type="radio"/>	<input checked="" type="radio"/>	<input type="radio"/>	Rinse & Spin			<input type="radio"/>
Mix	<input type="radio"/>	<input checked="" type="radio"/>	<input type="radio"/>	Wool		<input checked="" type="radio"/>	<input type="radio"/>
Jeans	<input type="radio"/>	<input checked="" type="radio"/>	<input type="radio"/>	Delicate		<input checked="" type="radio"/>	<input type="radio"/>
Sportswear	<input type="radio"/>	<input checked="" type="radio"/>	<input type="radio"/>	Daily Wash 45'	<input type="radio"/>	<input checked="" type="radio"/>	<input type="radio"/>
Color Care		<input checked="" type="radio"/>	<input type="radio"/>	Quick 15'		<input checked="" type="radio"/>	<input type="radio"/>
Baby Care	<input type="radio"/>	<input checked="" type="radio"/>	<input type="radio"/>	Cotton ECO		<input checked="" type="radio"/>	<input type="radio"/>
Drum Clean							

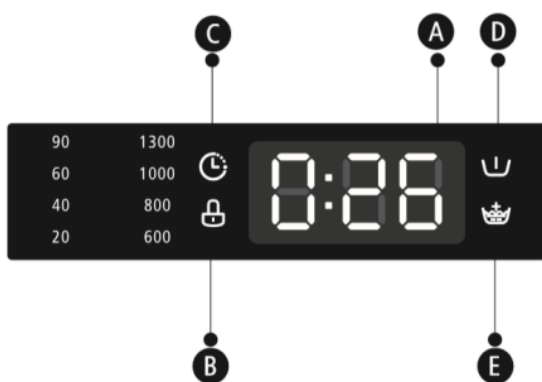
Mandatory
 Optional

• Please choose suitable type of detergent for the various washing temperature to get the best washing performance with less water and energy consumption.

CONTROL PANEL



1	Available washing programmes
2	Temperature choice/ My cycle
3	Spin washing/ Mute
4	Child lock, entered by pressing Temp. and Spin at the same time for 3 seconds.
5	Delay
6	Function
7	Start/ Pause
8	Display
9	Power



- A** Display

Wash Time	Delay Time
125	2H
End	Error
End	E 30
- B** Door Lock
- C** Delay
- D** Pre Wash
- E** Extra Rinse

PRE-WASH:



The Prewash function can get an extra wash before main wash. You need to put detergent into the Case (I) when it is selected.

EXTRA RINSE:

The laundry will undergo an extra rinse once after you select it.

DELAY:

Set the Delay function:

1. Select a programme.
2. Press the Delay button to choose the time (the delay time is 0-24 H/3H-6H9H).
3. Press [Start/Pause] to commence the delay operation.



CANCEL THE DELAY FUNCTION:

Press the [Delay] button until the display shows 0H. It should be pressed before starting the programme. If the programme has already started, you should switch off the programme to reset a new one.

NOTE: If there is any break in the power supply while the machine is operating, the appliance stores the selected programme. When the power is restarted, the most recent program will continue.

TEMP:

Press the button to regulate the temperature (Cold,20 40°C,60°C,90°C).

SPIN:

Press the button to change the speed/ Mute.

CHILD LOCK:

Press Spin and Delay at the same time for 3 seconds to enter and exit child lock.

MUTE:

Press and hold the spin button for 3 seconds to mute the button sounds.

MY CYCLE:

Press and hold the Temp. button for 3 seconds to save your preferred programme.

PROGRAMMES



COTTON	Hard-wearing textiles, heat-resistant textiles made of cotton or linen.
SYNTHETIC	Wash synthetic articles, for example: shirts, coats, blending. While washing the knitting textiles, detergent quantity shall be reduced due to its loose string construction and easily forming bubbles.
BABY CARE	Washing the baby's clothes, it can make the baby's wear cleaner and make the rinse performance better to protect baby's skin.
DAILY WASH 45'	Washing few and not very dirty clothes quickly.
MIX	Mixed load consisting of textiles made of cotton and synthetics.
SPORTSWEAR	Washing the activewear.
JEANS	Specially for jeans
QUICK 15'	Extra short programme approx. suitable for lightly soiled washing as a small amount of laundry.
DELICATE	For delicate, washable textiles, e.g. made of silk, satin, synthetic fibres or blended fabrics.
WOOL	Hand or machine-washable wool or rich wool textiles. Especially gentle wash programme to prevent shrinkage, longer programme pauses (textiles rest in wash liquor).
SPIN ONLY	Extra spin with selectable spin speed
RINSE AND SPIN	Extra rinse with spin.
COTTON ECO	To increase the washing effects, washing time is increased.
DRUM CLEAN	Specially set in this machine to clean the drum and tube. It applies 90 °C high temperature sterilization to make the clothes washing greener. When this programme is performed, the clothes or other washing cannot be added. When proper amount of chlorine bleaching agent is put in, the barrel cleaning effect will be better. The customer can use this programme regularly according to the need.
COTTON	Washing brightly coloured clothes, it can protect the colours better.

WASHING PROGRAMME TABLE

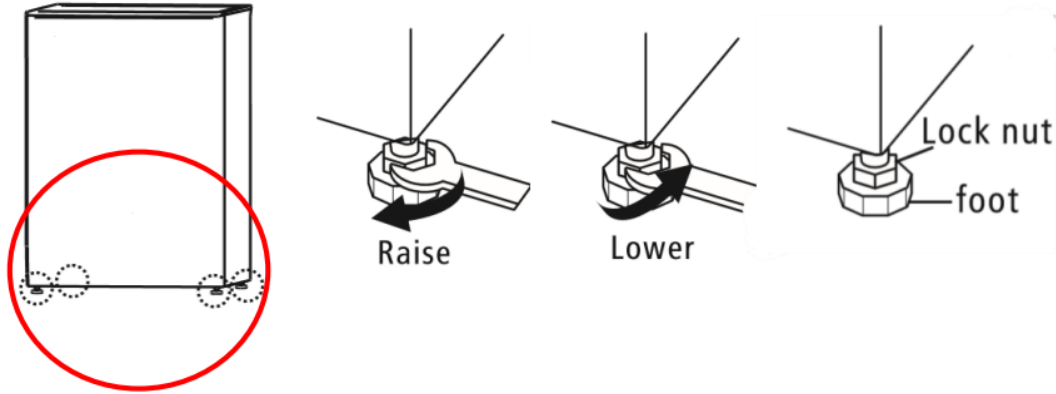


PROGRAMME	LOAD (KG)	TEMP (°C)	DEFAULT TIME
Cotton	6.5	40	2:40
Daily Wash 45'	2.5	40	0:45
Quick 15'	2.0	Cold	0:15
Synthetic	3.25	40	2:20
Mix	6.5	40	1:13
Jeans	6.5	60	1:45
Sportswear	3.25	40	1:31
Baby Care	6.5	40	1:27
Drum Clean	-	90	1:18
Spin Only	6.5	-	1:12
Rinse and Spin	6.5	-	0:20
Colour Care	3.25	Cold	1:10
Delicate	2.0	20	0:49
Wool	2.0	40	1:07
Cotton 60	6.5	60	2:45
Cotton 40	6.5	40	2:40



LEVELLING

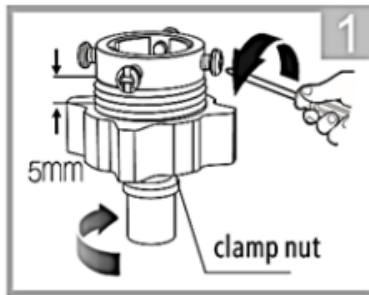
1. Loosen the lock nut turn the feet until it closely contacts with the floor.
2. Adjust the legs and lock them with a spanner, make sure the machine is steady.



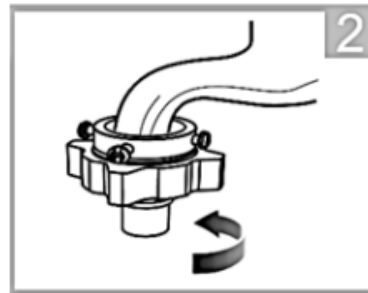
HOSE CONNECTION

CONNECTING THE WATER SUPPLY HOSE

To prevent leakage or water damage, do not kink, crush, modify or sever water inlet hose.



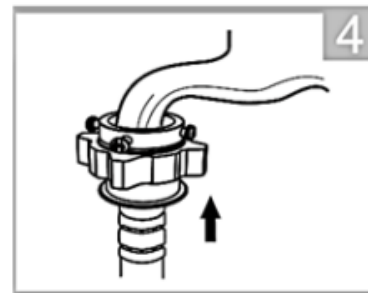
Loosen clamp nut and four bolts



Tighten clamp nut

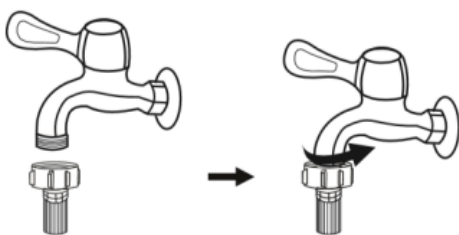


Press slide bushing, insert inlet hose into connecting base



Connection finished

CONNECTING THE SCREW TAP AND INLET HOSE

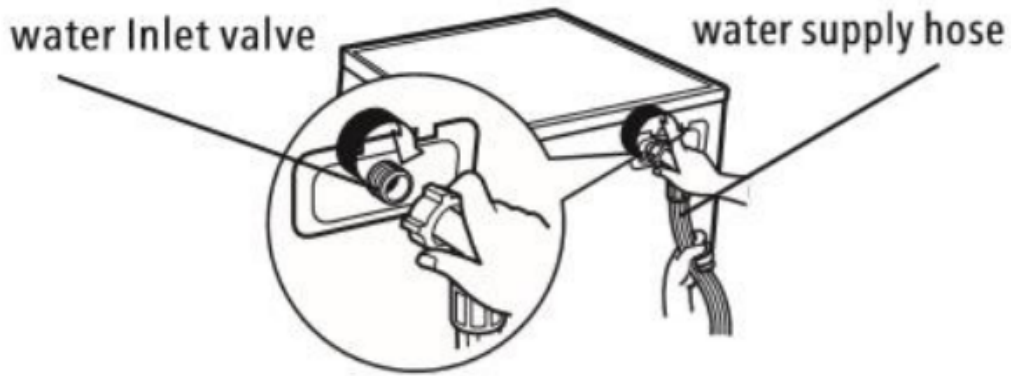


Tap Threads and Inlet Hose



Special Tap for Washing Machine

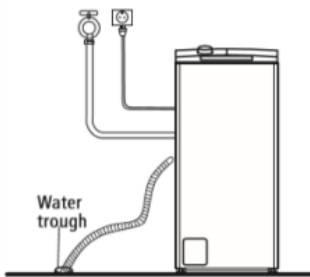
Connect the other end of inlet pipe to the inlet valve at the back of the product and fasten the pipe tightly in a clockwise direction.



DRAIN HOSE

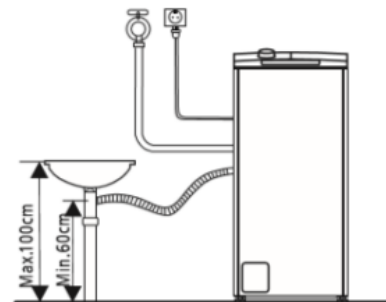
Connect the other end of inlet pipe to the inlet valve at the backside of product and fasten the pipe tightly clockwise.

There are two ways to place the end of drain hose:

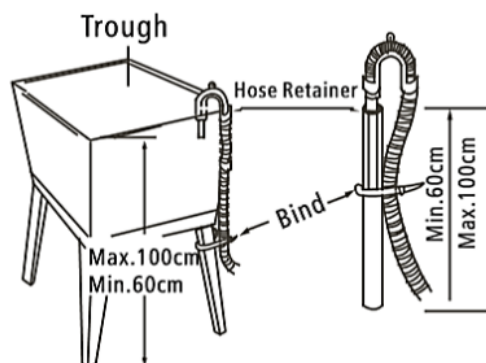
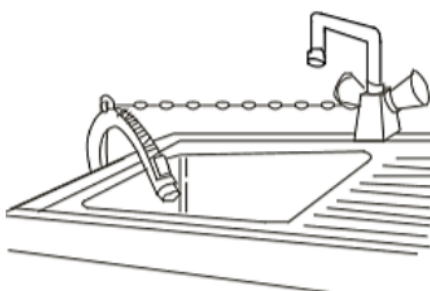


1. Put it into the water trough.

2. Connect it to the branch drain pipe of the trough.



If the machine has drain hose support, please install it following the below instructions.



- If the drain hose is too long, do not force it into washing machine as it will cause abnormal noises.
- When installing drain hose, fix it properly with a rope.

CLEANING AND MAINTENANCE

NOTE: Ensure that the appliance is unplugged before cleaning and maintenance takes place.

The surface can be cleaned with diluted non-abrasive neutral detergents when necessary. If there is any water overflow, use a wet cloth to wipe it off immediately.

The rusts left inside the drum by the metal articles must be removed immediately with chlorine-free detergents. Never use steel wool. Don't put laundry in the washing machine during the drum cleaning.

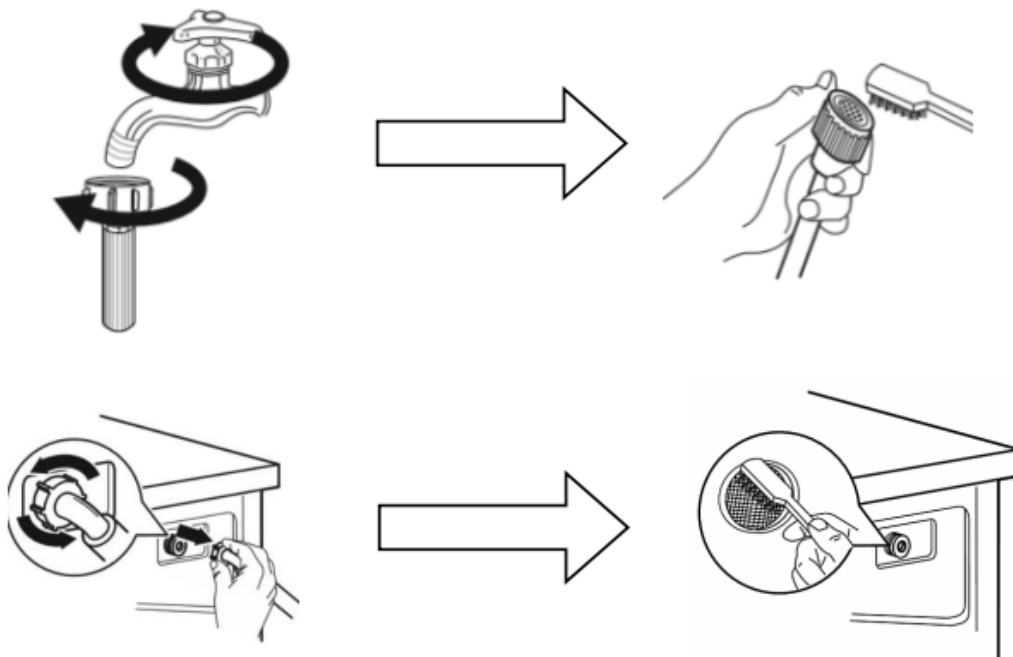
CLEANING THE INLET FILTER:

Washing the filter in the tap

1. Close the tap.
2. Remove the water supply hose from the tap.
3. Clean the filter.
4. Reconnect the water supply hose

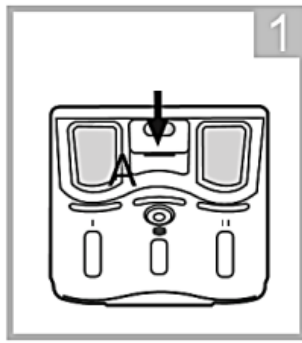
WASHING THE FILTER IN WASHING MACHINE:

1. Screw off the inlet pipe from the backside of the machine.
2. Pull out the filter with long nose pliers and reinstall it back after being washed.
3. Reconnect the inlet pipe.

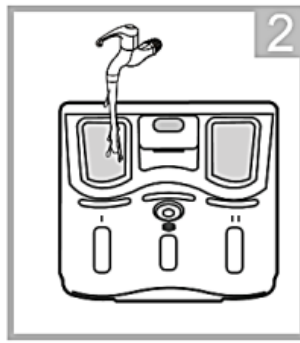


CLEANING THE DETERGENT DISPENSER

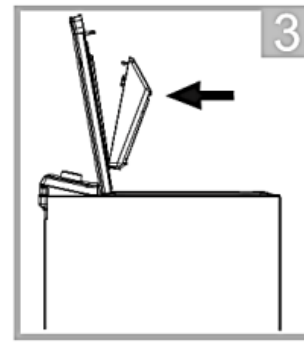
1. Open the dispenser compartment. Lift the clip up and take out softener cover and wash all grooves with water.
2. Restore the softener cover and push the drawer onto position.



1
Pull out the dispenser drawer with press the A



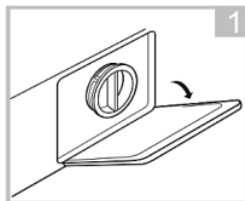
2
Clean the dispenser drawer under water



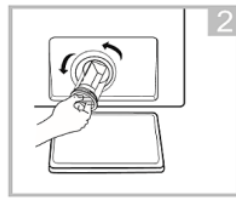
3
Insert the dispenser drawer

CLEANING THE DRAIN PUMP FILTER

- Be careful of hot water
- Allow the detergent solution to cool down.
- Unplug the machine to avoid electrical shock before washing.
- Clean the filter periodically to ensure the normal operation of washing machine.



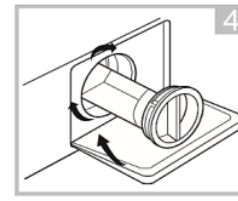
1
Open the lower cover cap



2
Open the filter by turning to the counter clockwise



3
Remove extraneous matter



4
Close the lower cover cap

Make sure that the valve cap and emergency drain hose are reinstalled properly, cap plates should be inserted aligning to hole plates otherwise water may leak.

Never remove the pump cover during a wash cycle, always wait until the appliance has finished the cycle, and is empty. When replacing the cover, ensure it is securely re-tightened.

TROUBLESHOOTING

DESCRIPTION	REASON	SOLUTION
Washing machine does not start up	Door is not closed properly	Restart after the door is closed Check if the clothes is stuck
Door cannot be opened	Safety protection is not working	Disconnect the power, restart the product
Water is leaking	Hose connection is loose	Check and fasten water pipes Clean up outlet hose
Detergent residue	Detergent is dampened	Clean and wipe the detergent box
Display does not light	Disconnected power or PC board or harness has a connection problem	Check if the power is shut down and the power plug is connected correctly
Abnormal noises	-	Check if the fixing (bolts) have been removed check it's installed on a solid and level floor
E30	Door is not closed properly	Restart after the door is closed Check if the clothes is stuck
E10	Water injection problem while washing	Check if the water pressure is too low Straighten the water pipe Check if the inlet valve filter is blocked
E21	Overtime water training	Check if the drain hose is blocked
E12	Water overflow	Restart the washer
EXX	Others	Please try again first, call up service line if there are still troubles

Warning

This content is compiled from multiple sources and is provided for reference purposes only. It may not be complete or fully applicable to all situations. If you are unable to resolve your issue, please contact the product manufacturer or an authorized service provider for official support.

Document generated by [ManualsFile](#)

