

PACKAGE CONTENTS



32" Home Theater Sound Bar



Power Adapter and Cables



Subwoofer Cable



Stereo RCA to 3.5mm Audio Cable



This Quick Start Guide

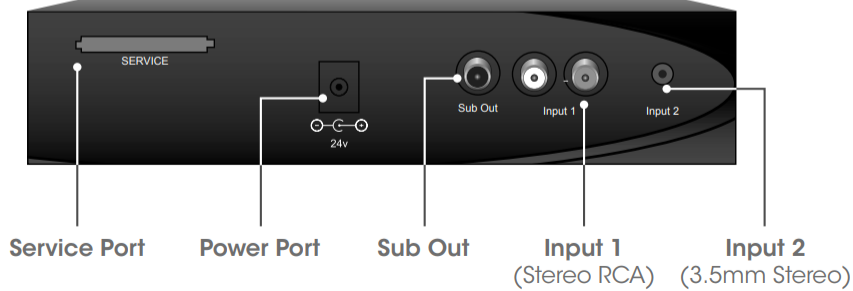
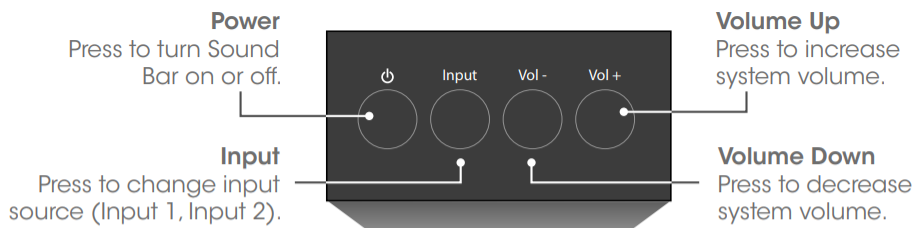


Subwoofer

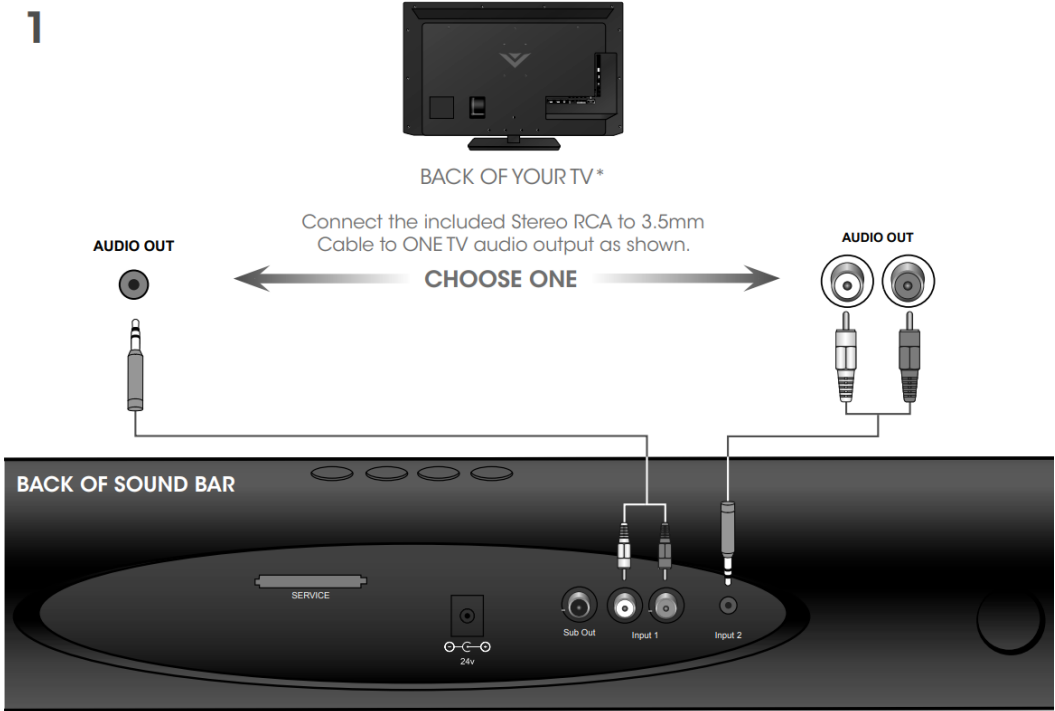


Remote Control with Battery

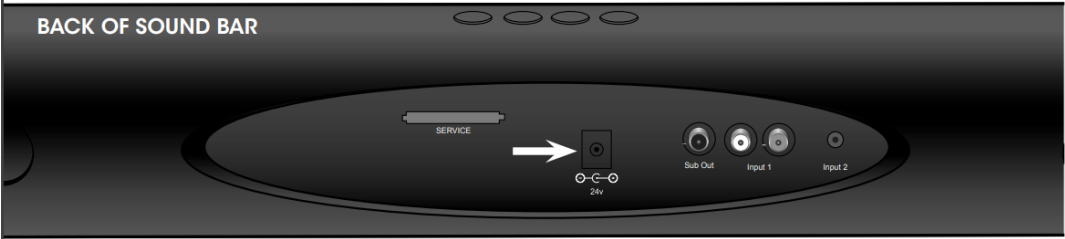
CONTROLS & CONNECTIONS



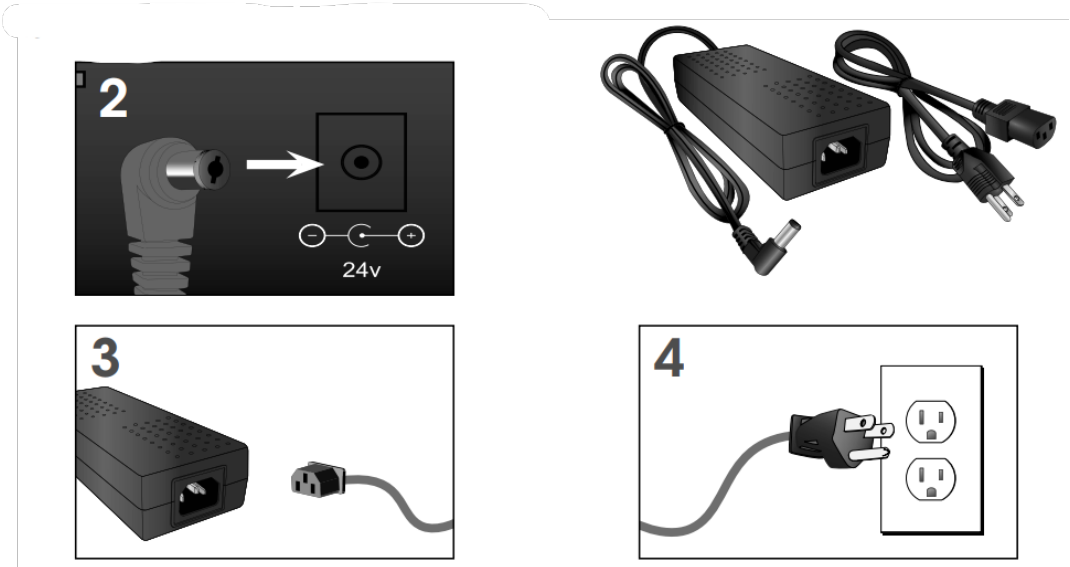
FIRST-TIME SETUP



*Not all TVs have the audio outputs shown above. To connect the Sound Bar directly to your other devices (Blu-ray player, game system, etc) see your device's user manual.

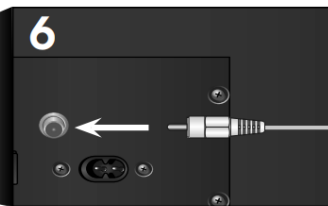
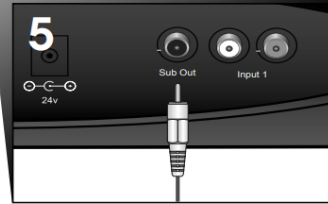


Connect the included power adapter from the sound bar to a power outlet as shown.

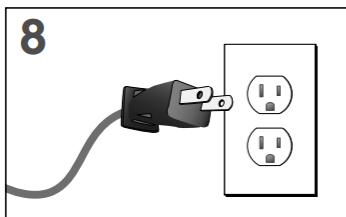
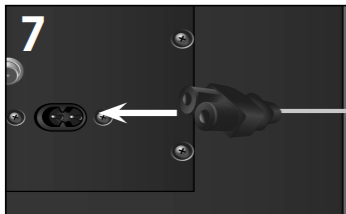




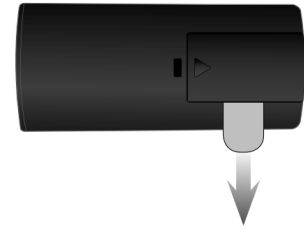
Connect the included Subwoofer Cable from the sound bar to the subwoofer as shown.



Connect the included power cable from the subwoofer to a power outlet. Then switch the power switch to the On position as shown.



10. Gently pull the plastic tab from the back of the remote control. (The plastic tab can be thrown away.)

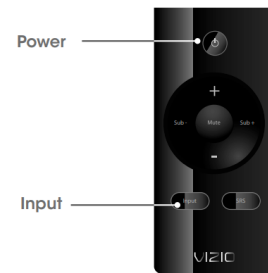


11.

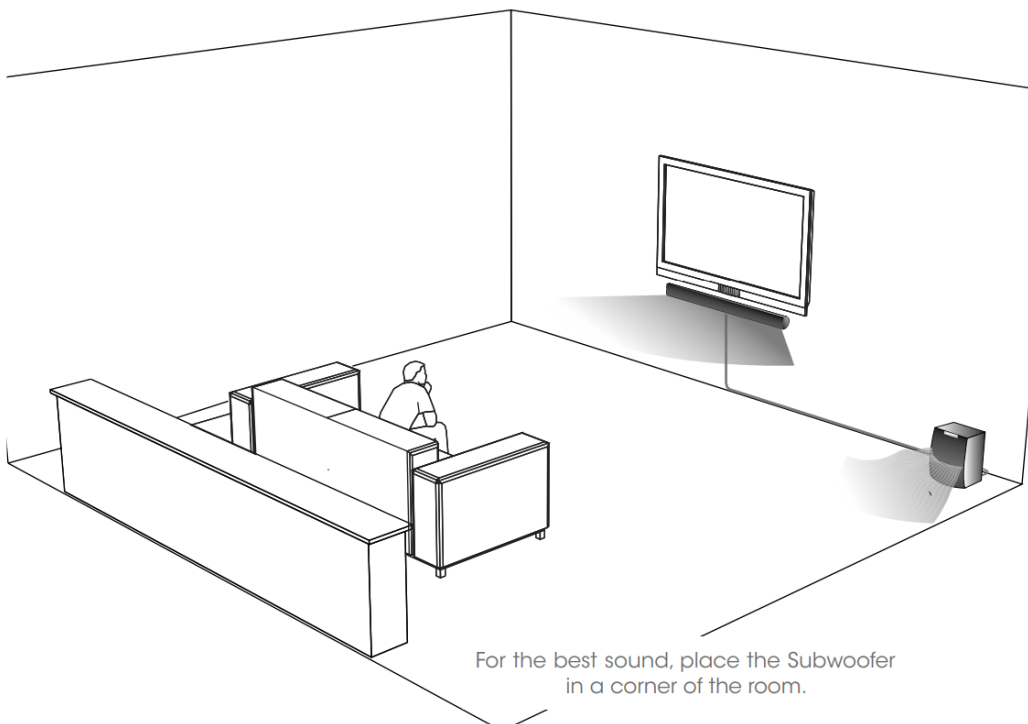
Turn your TV on, then press the Power button on the remote to turn the Sound Bar on.

Press the Input button to switch between the Input 1 and Input 2 audio sources. For example, if you connected your TV to Input 1, set the Sound Bar to Input 1.

Setup is complete.

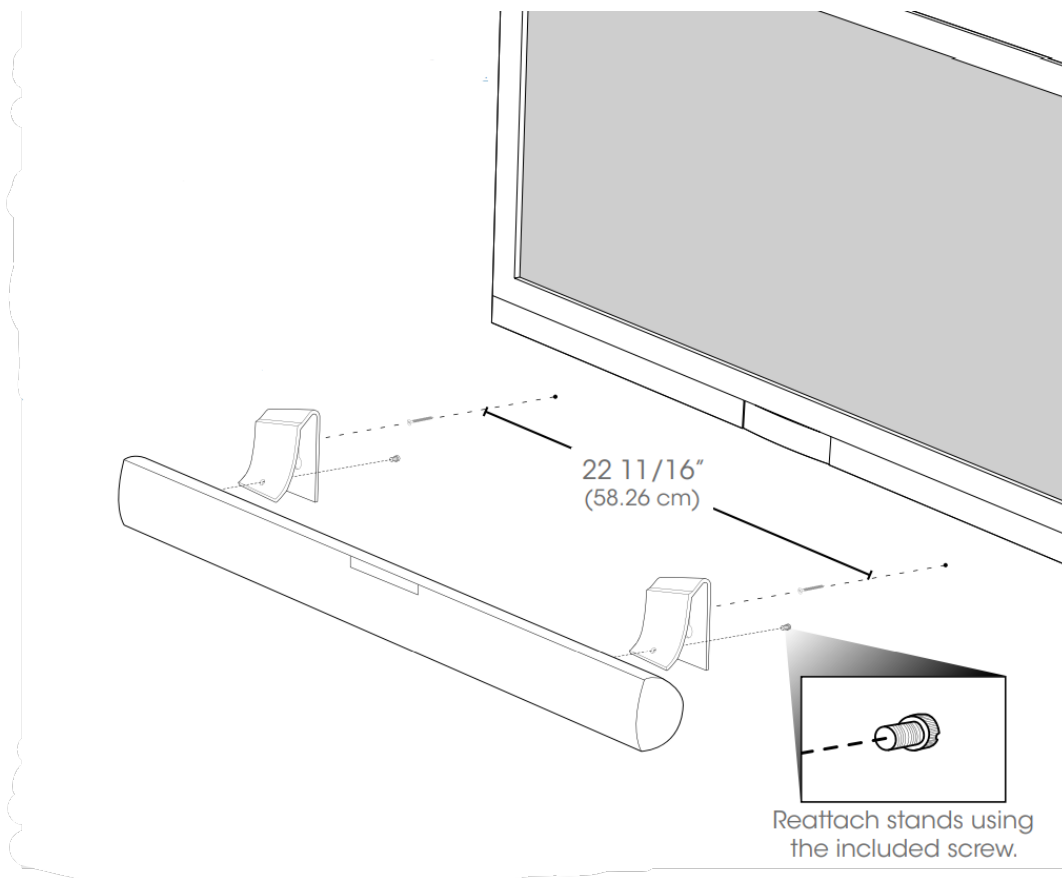
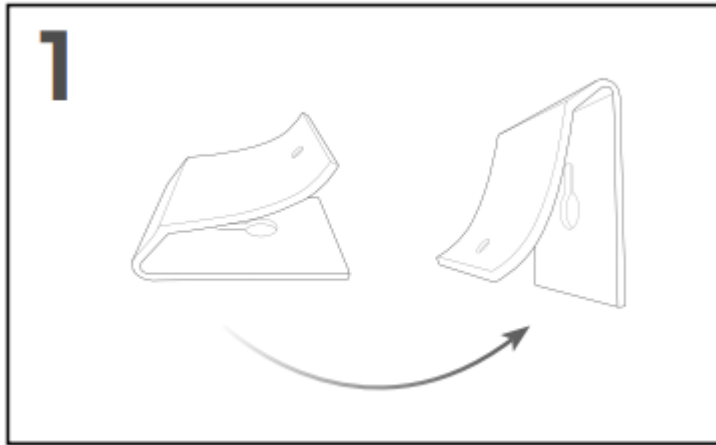


PLACING THE SUBWOOFER



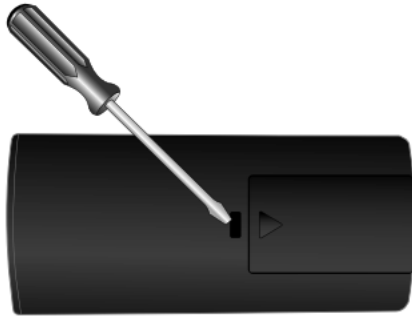
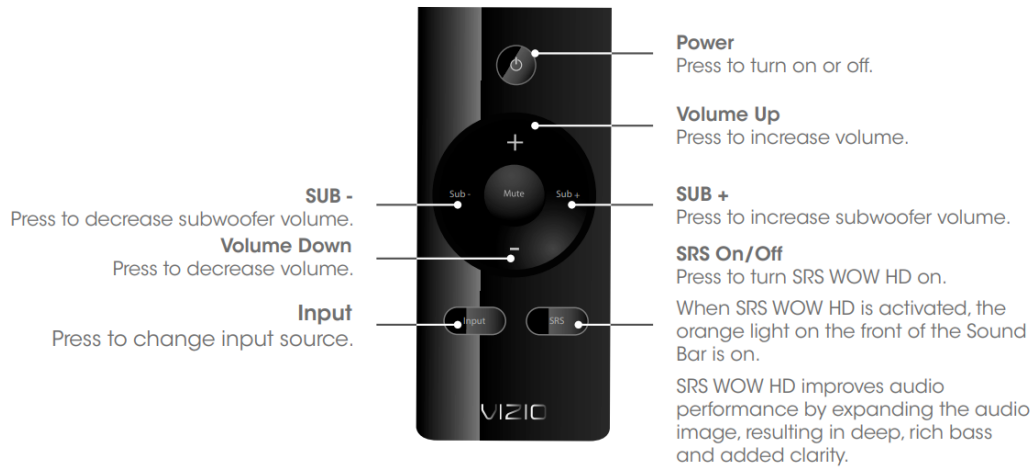
WALL MOUNTING THE SOUND BAR

1. Remove the screw from the Sound Bar stands and rotate as shown.



2. Be sure your screws are attached to wood studs or drywall anchors (for drywall) or concrete anchors (for brick/concrete walls).

USING THE REMOTE



If your remote stops responding, you may need to replace the battery.

To replace the battery, insert a flat-head screwdriver into the slot as shown.

Gently push down on the tab, then press and pull downward on the battery cover to open.

HELP & TROUBLESHOOTING

<p>There is no power.</p>	<ul style="list-style-type: none"> • Press the POWER button on the remote control or on the top of your Sound Bar. • Ensure the power cord is securely connected. • Ensure the light on the power adapter is glowing green. • Plug a different device into the electrical outlet to verify that the outlet is working correctly.
<p>There is no sound.</p>	<ul style="list-style-type: none"> • Increase the volume. Press Volume Up on the remote control or on the top of your Sound Bar. • Press MUTE on the remote to ensure the Sound Bar is not muted. • Press INPUT on the remote or on the top of your Sound Bar to select a different input source. • If you are using the 3.5mm output from your TV, be sure that is connected to an audio OUTPUT and not audio INPUT. Some TVs use 3.5mm audio INPUT for devices such as computers. • Your TV may be set to variable audio output. Confirm that the audio output setting is set to FIXED or STANDARD, not VARIABLE. Consult your TV's user manual for more detailed information.
<p>I hear buzzing or humming</p>	<ul style="list-style-type: none"> • Ensure all cables and wires are securely connected. • Connect a different source device (TV, Blu-ray player, etc) to see if the buzzing persists. If it does not, the problem may be with the original device. • Connect your device to a different input on the Sound Bar.
<p>There is no bass.</p>	<ul style="list-style-type: none"> • Press the SUB + button on the remote control to increase the bass level. • Ensure the subwoofer cable is securely connected to the Subwoofer and to the Sound Bar. • Ensure the subwoofer is plugged in and the power switch is in the On position.
<p>There is too much bass.</p>	<ul style="list-style-type: none"> • Press the SUB - button on the remote control to decrease the bass level.

SPECIFICATIONS



Sound Bar:	Two 2.75" High-Efficiency Hand-Built Full Range Transducers
Inputs:	1 x 3.5mm Audio 1 x RCA Stereo Audio
Outputs:	1 x RCA Sub Out
Sound Pressure Level:	90 dB
Frequency Response:	90Hz - 19 KHz
Voltage:	100-240 VAC, 50-60 Hz
Dimensions (Sound Bar)	31.50" x 4.00" x 3.65" (with stand) 31.50" x 3.25" x 3.65" (w/o stand)
Dimensions (Subwoofer):	8.13" x 10.50" x 9.56"

IMPORTANT SAFETY INFORMATION

Your Sound Bar System is designed and manufactured to operate within defined design limits, and misuse may result in electric shock or fire. To prevent your Sound Bar System from being damaged, the following rules should be observed for its installation, use, and maintenance. Please read the following safety instructions before operating your Sound Bar System. Keep these instructions in a safe place for future reference. Please heed all warnings and follow all instructions.

- To reduce the risk of electric shock or component damage, switch off the power before connecting other components to your Sound Bar System.
- When moving your Sound Bar System from an area of low temperature to an area of high temperature, condensation may form in the housing. Wait before turning on your Sound Bar System to avoid causing fire, electric shock, or component damage.
- Never push any object into the slots and openings on your Sound Bar System enclosure. Do not place any objects on the top of your Sound Bar System. Doing so could short circuit parts causing a fire or electric shock. Never spill liquids on your Sound Bar System.

- Your Sound Bar System should be operated only from the type of power source indicated on the label on the AC/DC Adapters. If you are not sure of the type of power supplied to your home, consult your dealer or local power company.
- Only power of the marked voltage can be used for your Sound Bar System. Any other voltage than the specified voltage may cause fire or electric shock
- The power cord must be replaced when using different voltage than the voltage specified. For more information, contact your dealer.
- Do not defeat the safety purpose of the grounded plug.
- When connected to a power outlet, power is always flowing into your Sound Bar System. To totally disconnect power, unplug the power cord.

<ul style="list-style-type: none"> • The lightning flash with arrowhead symbol within an equilateral triangle is intended to alert the user to the presence of un-isolated, dangerous voltage within your Sound Bar System that may be of sufficient magnitude to constitute a risk of electric shock to persons. 	
<ul style="list-style-type: none"> • The exclamation point within an equilateral triangle is intended to alert the user to the presence of important operating and servicing instructions in the literature accompanying your Sound Bar System. 	

- Do not overload power strips and extension cords. Overloading can result in fire or electric shock.
- The wall socket should be located near your Sound Bar System and be easily accessible
- Do not touch the power cord during lightning. To avoid electric shock, avoid handling the power cord during electrical storms.
- Do not attempt to repair or service Sound Bar System yourself. Opening or removing the front cover may expose you to high voltages, electric shock, and other hazards. If repair is required, contact your dealer and refer all servicing to qualified service personnel.
- Keep your Sound Bar System away from moisture. Do not expose your Sound Bar System to rain or moisture. If water penetrates into your Sound Bar System, unplug the power cord and contact your dealer. Continuous use in this case may result in fire or electric shock.
- Do not use your Sound Bar System if any abnormality occurs. If any smoke or odor becomes apparent, unplug the power cord and contact your dealer immediately. Do not try to repair your Sound Bar System yourself.
- Avoid using dropped or damaged appliances. If your Sound Bar System is dropped and the housing is damaged, the internal components may function abnormally. Unplug the power



cord immediately and contact your dealer for repair. Continued use of your Sound Bar System may cause fire or electric shock.

- Do not install your Sound Bar System in an area with heavy dust or high humidity. Operating your Sound Bar System in environments with heavy dust or high humidity may cause fire or electric shock.
- Ensure that the power cord and any other cables are unplugged before moving your Sound Bar System.
- When unplugging your Sound Bar System, hold the power plug, not the cord. Pulling on the power cord may damage the wires inside the cord and cause fire or electric shock. When your Sound Bar System will not be used for an extended period of time, unplug the power cord.
- To reduce risk of electric shock, do not touch the connector with wet hands.
- Insert the remote control battery in accordance with instructions. Incorrect polarity may cause the battery to leak which can damage the remote control or injure the operator.
- If any of the following occurs, contact the dealer:
 - The power cord fails or frays
 - Liquid sprays or any object drops into your Sound Bar System
 - Sound Bar System is exposed to rain or other moisture
 - Sound Bar System is dropped or damaged in any way
 - The performance of your Sound Bar System changes substantially
- Keep your Sound Bar System away from moisture. Do not expose your Sound Bar System to rain or moisture. If water penetrates into your Sound Bar System, unplug the power cord and contact your dealer. Continuous use in this case may result in fire or electric shock.
- Unplug the power cord before cleaning your Sound Bar System. Clean only with dry cloth. Do not use a liquid or a spray cleaner on your Sound Bar System. Do not use abrasive cleaners.
- Slots and openings in the back and bottom of the cabinet are provided for ventilation. To ensure reliable operation of your Sound Bar System and to protect it from overheating, be sure these openings are not blocked or covered. Do not place your Sound Bar System in a bookcase or cabinet unless proper ventilation is provided.
- Do not install near any heat sources such as radiators, heat registers, stoves, or other apparatus (including amplifiers) that produce heat.
- Your Sound Bar System AC/DC Adapters are equipped with a three-pronged grounded plug (a plug with a third grounding pin). This plug will fit only into a grounded power outlet. This is a safety feature. If your outlet does not accommodate the three-pronged, have an

electrician install the correct outlet, or use an adapter to ground your Sound Bar System safely.

- Protect the power cord from being walked on or pinched particularly at plugs, convenience receptacles, and the point where they exit from the apparatus.
- Only use attachments/accessories specified by the manufacturer.
- Use only with the cart, stand, tripod, bracket, or table specified by the manufacturer, or sold with the apparatus. When a cart is used, use caution when moving the cart/apparatus combination to avoid injury from tip-over.
- Unplug this apparatus during lightning storms or when unused for long periods of time.
- Refer all servicing to qualified service personal. Servicing is required when the apparatus has been damaged in any way, such as power-supply cord or plug is damaged, liquid has been spilled or objects have fallen into the apparatus, the apparatus has been exposed to rain or moisture, does not operate normally, or has been dropped.
- To reduce the risk of fire or electric shock, do not expose this apparatus to rain or moisture.
- The Apparatus shall not be exposed to dripping or splashing and that no objects filled with liquids, such as vases, shall be placed on the apparatus.
- The main plug is used as the disconnect device, the disconnect device shall remain readily operable.
- CAUTION - Danger of explosion or fire if battery is mistreated. Replace only with the same or specified type.
- Do not leave the battery exposed to direct sunlight for a long period of time with doors and windows closed.
- Do not disassemble the battery or dispose of it in fire



Warning

This content is compiled from multiple sources and is provided for reference purposes only. It may not be complete or fully applicable to all situations. If you are unable to resolve your issue, please contact the product manufacturer or an authorized service provider for official support.

