

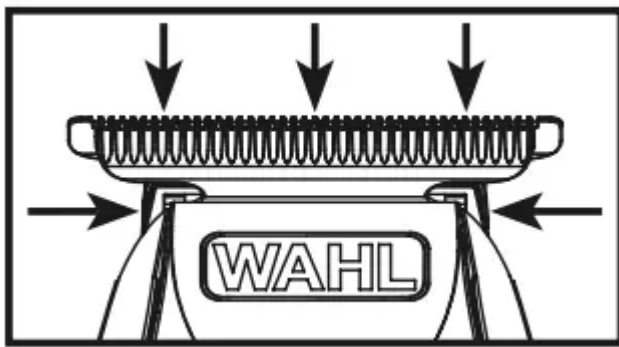
Operating Instructions for the Wet/Dry Lithium Ion Grooming Kits

CARING FOR YOUR TRIMMER

OILING BLADES

For best results, use Wahl Clipper Oil on the blades only when necessary, or approximately once a month. Motor bearings are permanently lubricated—do not attempt to oil.

When oiling your trimmer, turn the trimmer “ON - I,” hold the unit with the blades facing DOWN and squeeze three drops across the front of the blade and one drop on each side on the heel of the blade. Wipe off excess oil with soft cloth.



NOTICE—DO NOT OVER OIL! Excessive oiling or application of liquids will cause damage if allowed to seep back into motor.

BLADE CARE

Trimmer blades have precision-hardened, ground and lapped cutting teeth. Blades should be handled carefully and never bumped or used to cut dirty or abrasive material. Clean with the included brush.

CLEANING/STORAGE

Before storing your trimmer, use the cleaning brush to whisk any loose hairs from the unit and the blades. Store unit in such a manner so that blades are protected from damage.

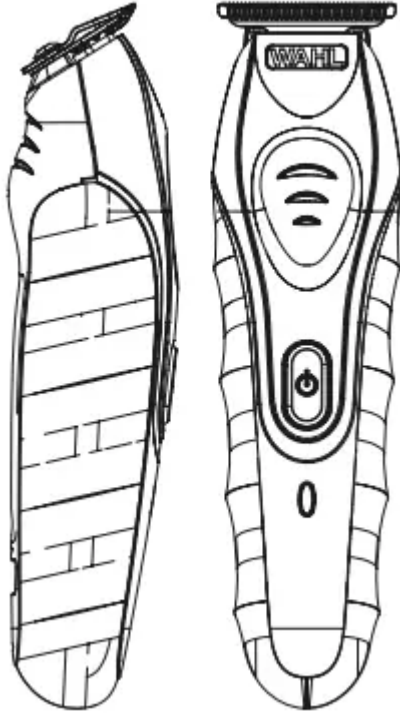
When the trimmer is not in use, the trimmer blade guard attachment should be in place to protect the blades.

This appliance should be stored in a manner where it is not subjected to crushing, heating above 100°C (212°F), or incineration.

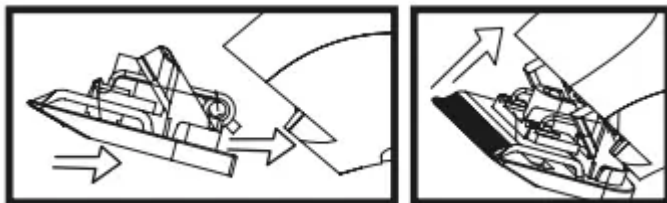
HOW TO USE

SPECIAL FEATURES:

Your trimmer has been designed with several advanced features to help you get perfect results every time you trim. Your trimmer may be used to neatly trim goatees, beards, mustaches, neckline, sideburns around the ears and eyebrows, or anywhere you may need grooming. It also makes a great all-around family trimmer for light haircuts and touch ups between trips to the barber or to clean up the shape of the neck.



- **Rubber Grip** allows you to hold the trimmer in a comfortable position for precision trimming.
- **A Detachable Blade System** enables you to quickly change from a standard-width blade for full grooming to a narrow-width blade for detail trimming around a mustache, goatee, or anywhere to define the hair line and clip any stray whiskers.



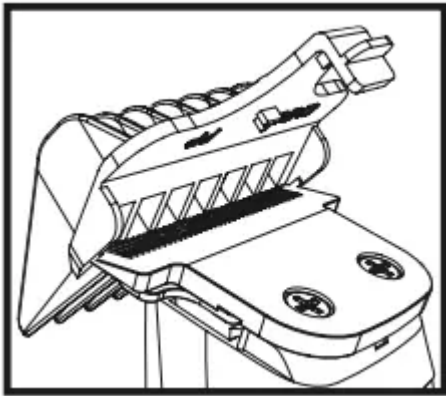
To remove attachment, simply pull top edge of blade away from body unit. To attach, align back tab of attachment head to cavity on the inner edge of trimmer unit and push down on top of blade.

Should blades become damaged or dull or if you want additional attachment heads for your trimmer, you may purchase them from Wahl. See the ACCESSORY SHEET in this kit for ordering information.

- **Self-Sharpening Blades** are made to maintain their shape and sharpness for extended periods.

TRIMMING WITH ATTACHMENT COMBS

These attachments are ideal for blending, tapering and defining beards, as well as for achieving a “close trim” stubble look around the face. To use the attachments, go with the hair direction. To achieve closer looks, go against the hair direction. To attach guide combs, hold comb with the teeth up. Snap guide comb attachment firmly to the bottom of the trimmer blade.



TRIMMING AND EDGING YOUR BEARD

The following are suggested trimming steps and trimmer positions. You may find different procedures work better for you.

1. Comb your beard in the direction that it grows to help reveal stray hairs that may be longer than the others.
2. Attach a guide to trim and taper your beard. Begin with a guide of a long trimming length. Trim toward your chin in smooth, overlapping strokes, following the lay of your beard. If you trim against the way your beard naturally lays, the trimmer will cut the hair much shorter.

Change the trimming guides to progressively shorter lengths until you reach the desired length of beard. You may wish to trim closer near the ear and down under the chin, changing to a longer guide toward the front of the face and point of your chin.



3. To cut the outline of your beard, remove the trimming guide comb. Starting under your chin and working back toward your jawbone and ears, cut the outer perimeter of your beard underneath the jawbone. Continue the line all the way up to the ears and hairline.
4. Accentuate your beard line by using the trimmer in a downward motion. Start at the line you've created and, working from the chin back toward the ears, trim the area right under your beard line.
5. Define the upper part of your beard using the same technique.

MUSTACHE TRIMMING

1. **Comb your mustache.** Looking into a well-lit mirror, comb your mustache in the direction that it grows. This will help reveal stray hairs and achieve an even, balanced trim.
2. **Cut the outline of your mustache.** Holding the trimmer in a vertical position, with the nameplate side facing you, define the line of your mustache. The extended tips on the blades let you achieve a clean, well-defined mustache line.
3. **Defining.** As a finishing step, hold the trimmer with the nameplate facing you. Using only the bare blades, make a definitive line at the bottom of your mustache.

4. **Tapering.** Hold the trimmer with the nameplate facing away from you. Again starting with the middle of your mustache, follow the lip line and taper out the mustache until a gentle shape is created on the bottom portion of your mustache.
5. **Defining.** As a finishing step, hold the trimmer with nameplate facing make a definitive line at the bottom of your mustache.

DETAILING NECKLINES, SIDEBURNS, MUSTACHES & BEARDS

Slowly move trimmer downward on desired areas to neatly trim and shape.

TRIMMING ARM & LEG HAIR

Simply glide the trimmer over your arm or leg until desired hair length is achieved. The first time you trim the hair, start by using a longer guide comb on the trimmer, then use progressively shorter settings if a shorter length is preferred.

TRIMMING CHEST & STOMACH

Glide the trimmer over your torso region, in an upward motion until desired hair length is achieved. For tight, scratch-free trimming, use the #1/4 guide comb.

RECHARGING

The trimmer cannot be overcharged, so you may charge it as often as desired. However, periodic recharging of the trimmer, rather than continuous recharging, will prolong battery life. Charge when trimmer seems to lose power or run slower. The charging LED will pulse while charging. LED will stay lit when charging is complete.

1. This trimmer is conveniently designed for household use. It should be allowed to charge 60 minutes before first use.
2. Remove the trimmer, recharging transformer and accessories from the packing material.
3. Connect the transformer to the trimmer. BE SURE TRIMMER IS IN THE "OFF - 0" POSITION WHEN CHARGING.
4. Plug the recharging transformer into any convenient electrical outlet at the correct voltage.
5. When trimmer is low in power, it should be connected to the transformer and plugged into an outlet to assure maximum power is available when it is next used. This transformer is designed to completely charge the battery without overcharging. Do not use the trimmer while it is charging.
6. The battery will take approximately 60 minutes to charge. The lithium ion trimmer also has quick charge capability.
7. Insert only recharging transformer plug supplied by the manufacturer into charger receptacle.

TROUBLESHOOTING

If your trimmer does not seem to take a charge, check the following before returning it for repair:

1. Check outlet to make sure it is working by plugging in another appliance.
2. Make sure the outlet simply is not connected to a light switch which turns the power at the outlet off when lights are turned off.
3. Be sure the trimmer is properly connected to the recharging transformer, all connections are secure and the switch on the trimmer is turned "OFF - 0."
4. If your electricity is connected to a master power switch, we suggest the trimmer be disconnected from the charger anytime the master switch is off. Leaving the unit plugged into a dead outlet or an unplugged charger will drain the battery.
5. If trimmer does not run and it is completely charged, turn the unit "ON - 1" and pinch or push the blades manually. (Oil may have dried out between the blades, so they may be temporarily stuck together.)

TRAVEL LOCK

The Wahl 9899 trimmer comes with an electronic travel lock to avoid accidental activation while transporting.

Hold power button down for 5 seconds to engage travel lock.

Hold power button down for 5 seconds to disengage travel lock.

NOTE: Plugging in power cord while locked will deactivate the travel lock.

WET/DRY USE

The Wahl trimmer is designed to be water resistant and shower proof. This lets you use your Wahl trimmer in the shower or at the sink without worry and makes it easy to clean under running water.

NOTE: The trimmer is for wet/dry use. The trimmer will not run while the cord is attached for safety.

For best results use on damp or dry hair. Cutting hair while it is saturated with water is not good for the hair and is not recommended.



This symbol, located on the trimmer, represents that the shaver is suitable for use in the bath and shower.

IMPORTANT SAFETY INSTRUCTIONS

LITHIUM-ION BATTERY REPLACEMENT, CLIPPER DISPOSAL AND RECYCLING:

- For battery replacement send the entire, intact clipper unit to: Wahl Annex 3001 North Locust, P.O. Box 578, Sterling, IL 61081
- Do not attempt to remove the battery. Lithium-ion batteries can explode, catch fire, and/or cause burns if disassembled, damaged, or exposed to water or high temperatures.
- If you choose not to replace the battery, the entire, intact clipper unit must be disposed. Do not attempt to remove the battery for disposal. Lithium-Ion batteries may be subject to local disposal regulations. Many locations prohibit disposal in standard waste receptacles. Check your local laws and regulations.
- For recycling contact a government recycling agency, waste disposal service, retailer, or visit online recycling sources, such as www.batteryrecycling.com or www.rbrc.org.

Warning

This content is compiled from multiple sources and is provided for reference purposes only. It may not be complete or fully applicable to all situations. If you are unable to resolve your issue, please contact the product manufacturer or an authorized service provider for official support.