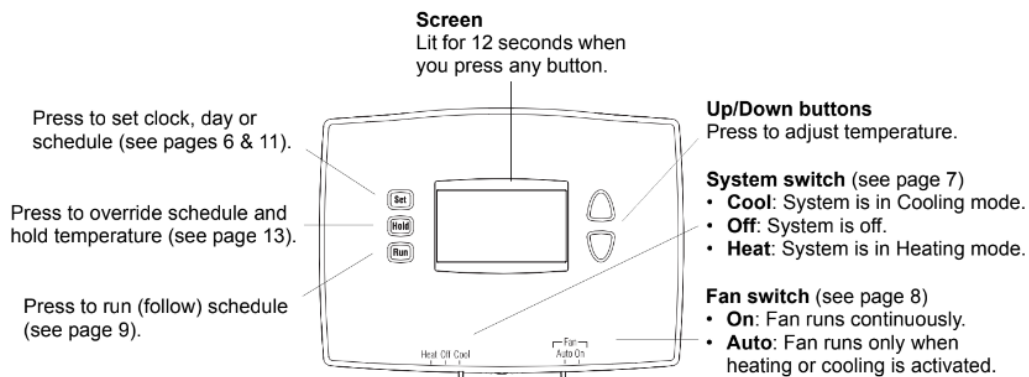


Overview

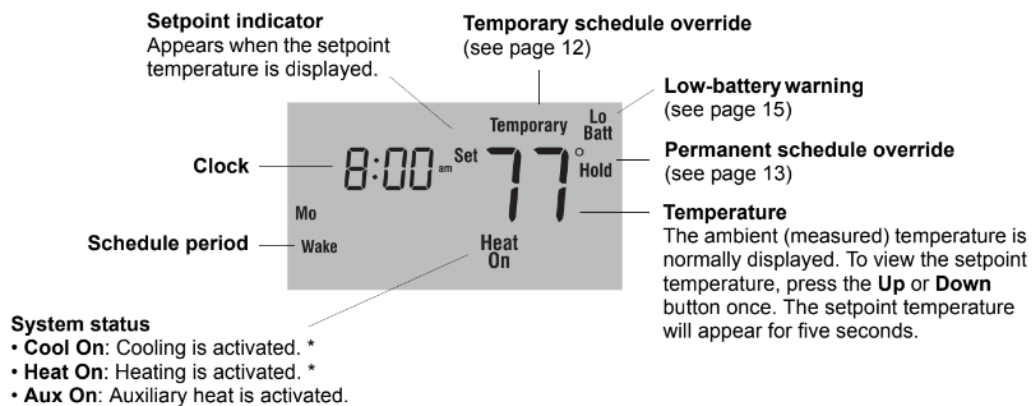
Thermostat Features

- Backlit display is easy to read
- Displays ambient (measured) temperature at all times
- One-touch access to setpoint temperature
- ENERGY STAR ® compliant to greatly reduce your heating/cooling expenses
- Separate programmable daily schedules (7-day programming)
- Temporary and permanent override of schedule
- Adaptive Intelligent Recovery™ ensures right temperature at the right time
- Built-in compressor protection

Quick reference to controls



Quick Reference to display



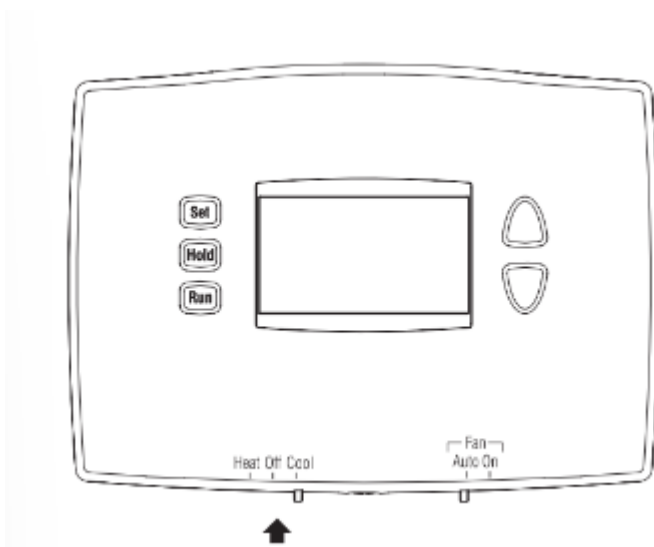
* When **Heat On** or **Cool On** is flashing, compressor protection is engaged (see page 14).

Programming & Operation

Set the clock

1. Press the Set button. Set Time will appear on the screen and the time display will flash.
2. Press the Up or Down button to set the time.
3. Press the Set button again. Set Day will flash on the screen.
4. Press the Up or Down button to select the day of the week.
5. Press the Run button to save the changes & exit. (The changes are also saved if you do not press any button for 60 seconds.)

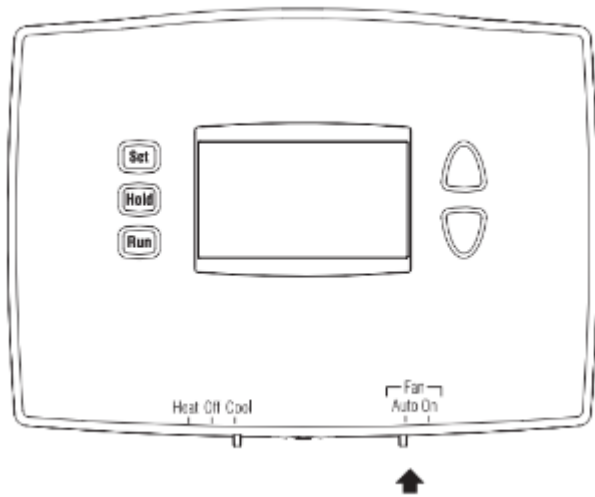
System switch (Heat/Cool)



Use the System switch to place the system in one of the following modes:

- Cool: System is in Cooling mode.
- Off: System is off.
- Heat: System is in Heating mode.

Fan switch (Auto/On)



Use the Fan switch to select the fan operation.

- Auto: The fan runs only when heating or cooling is activated (commonly used setting).
- On: The fan runs continuously.

Using the schedule

Press the Run button to follow the programmed schedule. For maximum energy savings while maintaining comfort, you can program the schedule such that the temperature is at an economical level when you sleep or leave for work and at a comfortable level when you are awake and at home. You can program up to four periods per day:

Wake	Starts when you wake up
Leave	Starts when you leave for work
Return	Starts when you return home
Sleep	Starts when you go to sleep

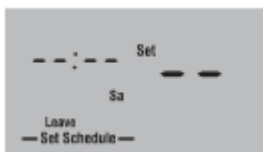
To program a period, you need to set its start time and its two temperature settings (one when the thermostat is in cooling mode and another one when it is in heating mode). You can set a different program for each day of the week.

Energy Star® settings

The thermostat has been programmed with the ENERGY STAR® settings for each day of the week (see table below). See next page if you wish to modify the settings.

Period	Start time	Heat	Cool
Wake	6:00 AM	70°F (21°C)	78°F (25.5°C)
Leave	8:00 AM	62°F (16.5°C)	85°F (29.5°C)
Return	6:00 PM	70°F (21°C)	78°F (25.5°C)
Sleep	10:00 PM	62°F (16.5°C)	82°F (27.5°C)

Modifying the schedule



1. Press the Set button 3 times until Set Schedule appears. The Wake period is displayed. To set another period, press the Set button as many times as needed until the desired period and the desired day are displayed and its time or temperature is flashing.
2. When the time flashes, press the Up or Down button to set the time.
3. Press the Set button.
4. To set the temperature for cooling mode, first place the System switch in Cool. To set the temperature for heating mode, first place the System switch in Heat.
5. When the temperature flashes, press the Up or Down button to set the temperature.
6. Press the Set button.
7. Repeat steps 2 through 6 to set each of the remaining periods.
8. Once all changes are made, press the Run button to save them and return to normal display. (The changes will automatically be saved if you do not press any button for 60 seconds.)

Temporary override of schedule



- To temporarily ignore the schedule, press the Up or Down button until the desired temperature is displayed. The word Temporary will appear on the screen and the period display will flash to indicate that the current period has been overridden. The new temperature will be used until the next period begins.
- Pressing the Up or Down button once will display the setpoint temperature. To change the setpoint temperature, press either button more than once.
- Press the Run button if you wish to cancel the temporary setting before the beginning of the next period.

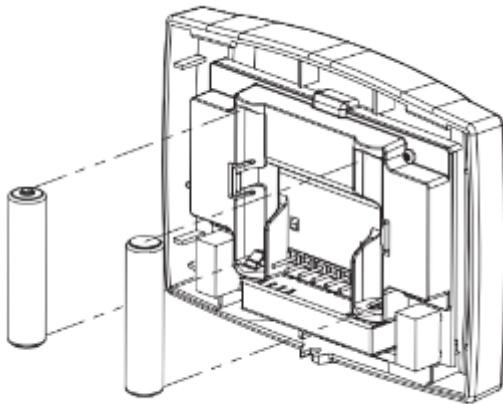
Permanent override of schedule



- To permanently ignore the schedule, press the Up or Down button until the desired temperature is displayed. Then, press the Hold button to maintain the new temperature indefinitely. The word Hold will appear on the screen.
- Press the Run button if you wish to cancel the override and resume the schedule. The word Hold will disappear and the thermostat will be set to the temperature programmed for the current period.

Appendices

Battery replacement



- Set the System switch to Off before removing the batteries. Otherwise, the heating/cooling system could remain activated even when batteries are removed.
- Install two fresh AAA batteries when Lo Batt flashes on the screen. Lo Batt appears for 60 days before the batteries are depleted.
- Replace batteries once a year, or when you will be away for more than a month.
- Most settings are stored in non-volatile (permanent) memory. Only the clock and the day must be set after you replace the batteries.

In case of difficulty

Screen is blank.

- Ensure two fresh AAA alkaline batteries are correctly installed.

Temperature settings cannot be changed.

- The System switch is off.
- You are setting the temperature outside its allowable range:
 - Heat: 40°F to 90°F (4.5°C to 32°C)
 - Cool: 50°F to 99°F (10°C to 37°C)

Cool On or Heat On is flashing.

- The compressor protection delay is underway. Wait for the delay to end (maximum of 5 minutes).

HI appears on the screen.

- The ambient (measured) temperature is above 122°F (50°C).

LO appears on the screen.

- The ambient (measured) temperature is below 32°F (0°C).

E1 appears on the screen.

- The temperature sensor circuit is opened. Replace the thermostat.

E2 appears on the screen.

- The temperature sensor circuit is shorted. Replace the thermostat.

Warning

This content is compiled from multiple sources and is provided for reference purposes only. It may not be complete or fully applicable to all situations. If you are unable to resolve your issue, please contact the product manufacturer or an authorized service provider for official support.