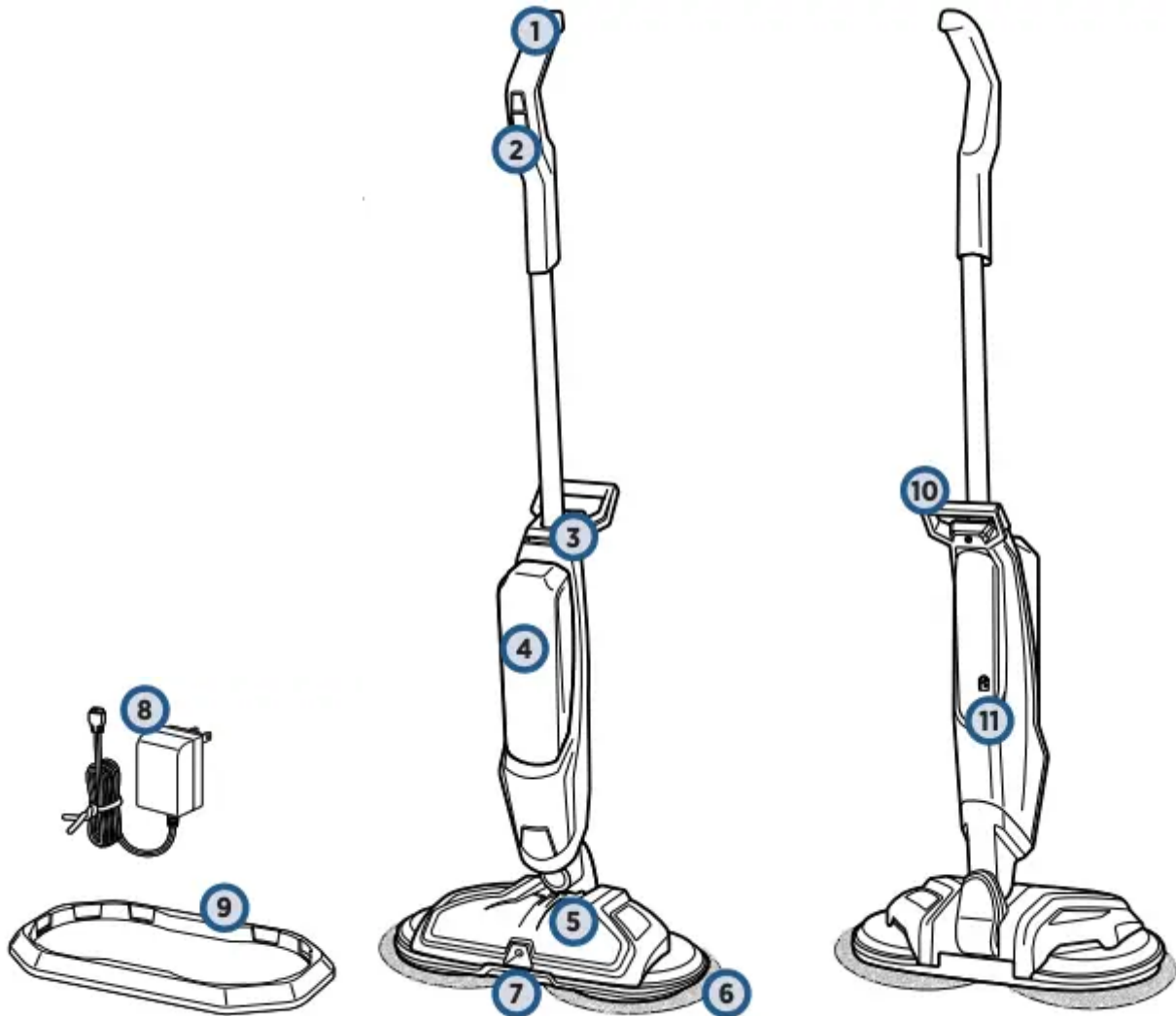


## Get to Know Your SpinWave® Cordless



- 1 Handle
- 2 Digital Controls
- 3 Battery Status Indicator Lights
- 4 Clean Water Tank
- 5 Low Profile Foot
- 6 Power Spin Pads
- 7 Spray Nozzle
- 8 Charging Adapter Plug
- 9 Storage Tray
- 10 Carry Handle

## Assembly

**WARNING** Do not plug in your SpinWave® Cordless until you are familiar with all instructions and operating procedures.



Insert handle into body of unit until you hear a “click”.

## Cleaning Formulas

**WARNING** To reduce the risk of fire and electric shock due to internal component damage, use only BISSELL cleaning formulas intended for use with the hard floor device.

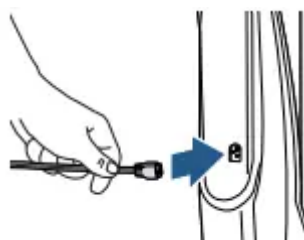
Keep plenty of SpinWave® Cordless formulas on hand so you can clean your sealed hard floors whenever it fits your schedule. Always use SpinWave® Cordless formulas in your machine. Other solutions may harm the machine and may void the warranty

SPINWAVE® CORDLESS FORMULAS	
	
Multi-Surface Formula	Wood Floor Formula
Great for cleaning ALL sealed hard floors	Restore your sealed wood floors' natural shine

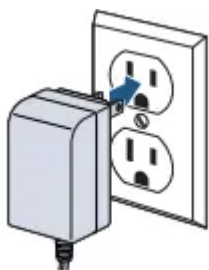
## Charging the Battery



1. Before charging, make sure unit is OFF by ensuring the battery status indicator lights are not illuminated.



2. Insert the charging adapter plug into the charging port on the back, right side of the unit.



3. Plug the adapter into a suitable wall outlet. The battery status indicator lights will illuminate when charging.



4. For maximum run time, charge unit for 4 hours prior to use. Refer to chart below for understanding the charging status.







**NOTE:** On first use, make sure unit is fully charged before use. To check the battery status, turn the unit ON by pulling the handle back and pressing the power button. Battery is fully charged when all three blue status lights are illuminated.

## In Use LED Display

**WARNING** Overcharging may cause battery damage, fire or explosion.

Your BISSELL® SpinWave® Cordless machine has an LED light display that will turn on when the power key is pushed to show the battery life status. All LED color is blue.

**TIP:** Be sure to charge unit when there is less than 10% power left, one LED flashing blue.

	
BATTERY STATUS	LIGHT STATUS
100% to 67%	
66% to 33%	
32% to 10%	
> 10%	
0%	

**NOTE:** Keep the temperature range between 40-104 °F when charging the battery, storing unit or during use.

## Attaching Mop Pads: Option 1

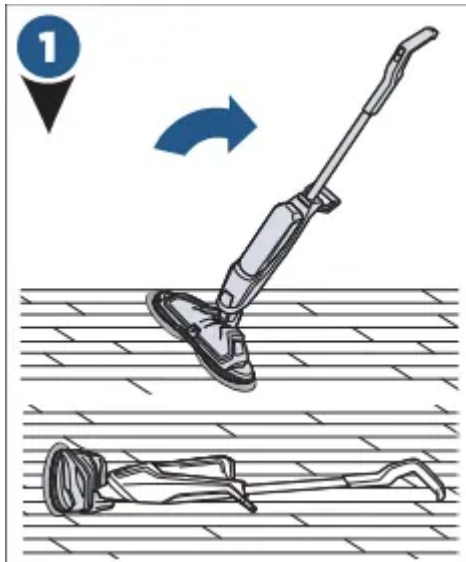
Your BISSELL® SpinWave® Cordless may have come with two different mop pads:



(2) Soft Touch Pads    (2) Scrubby Pads

The Soft Touch Pad is for everyday use on delicate flooring like sealed hardwoods and laminate.

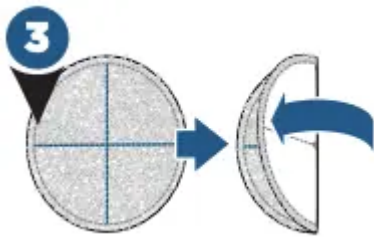
The Scrubby Pad is used to power through tough, sticky messes.



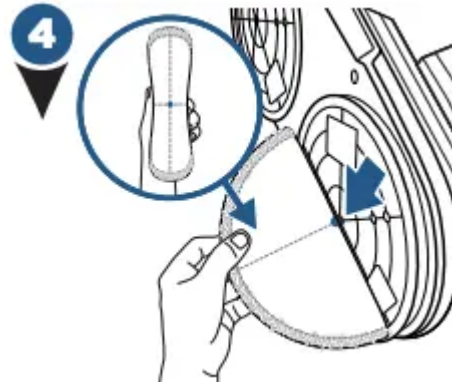
Your SpinWave® Cordless may have come with mop pads attached. If not, to attach mop pads, carefully lay machine down on the floor.



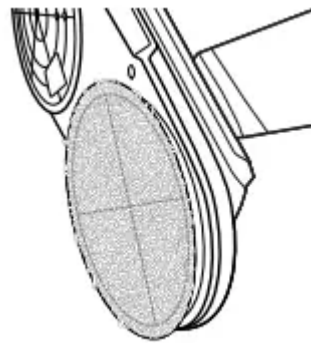
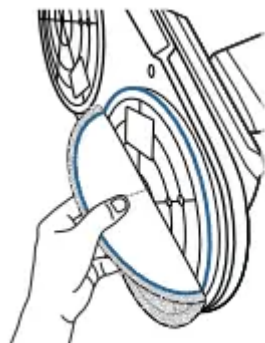
The back of the mop pad has a small dot in the center of the pad.



First, fold the pad in half, making sure the cloth material is inside the fold.



Then, with the mop pad folded, line up the small dot in the center of the pad with the middle screw on the bottom of the foot.



Lastly, line up the edge of the mop pad with the inner ring on the foot, attach the mop pad to the hook and loop material on the bottom of the foot.

## Attaching Mop Pads: Option 2

Your BISSELL® SpinWave® Cordless may have come with two different mop pads:



(2) Soft Touch Pads



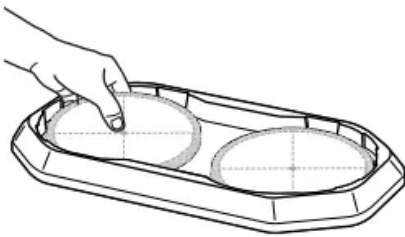
(2) Scrubby Pads

The Soft Touch Pad is best for everyday use on delicate flooring like sealed hardwoods and laminate.

The Scrubby Pad is best used to power through tough, sticky messes.

**NOTE:** These next steps are to help you apply the mop pads more accurately onto the machine.

1



Place clean mop pads upside down in the storage tray. The dot on each mop pad should be facing up.

2

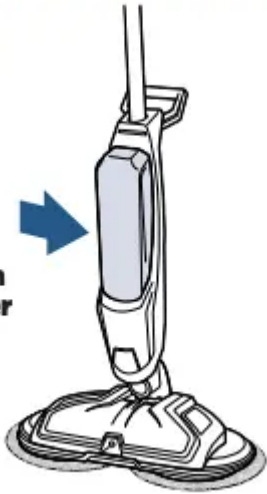


Hover the unit over the mop pads to align in the center, then place the unit down on the mop pads. Now they are attached to the machine.

## Filling Your Clean Water Tank

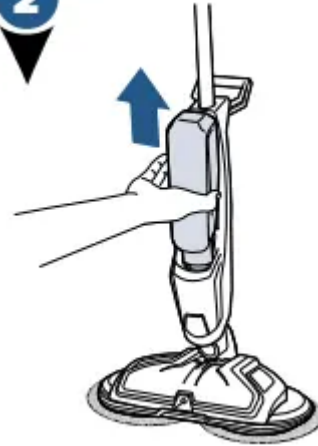
1

Clean Water Tank



The Clean Water Tank is located on the front of the machine.

2



Lift the Clean Water Tank straight up to remove from the machine.

3



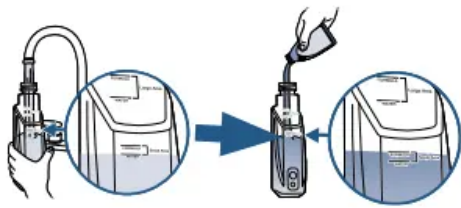
Unscrew the cap from the Clean Water Tank. The Clean Water Tank has two measuring volumes depending on the amount of space you would like to clean.

4



**For large area cleaning**

- a. Fill Clean Water Tank with warm tap water to the second water fill line.
- b. Add BISSELL® SpinWave® Cordless formula to the second formula fill line.

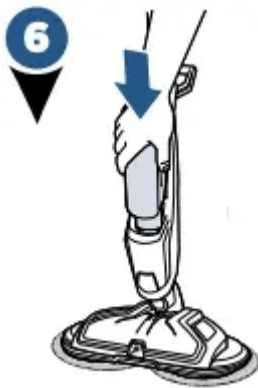


**For small area cleaning**

- a. Fill Clean Water Tank with warm tap water to the first water fill line.
- b. Add BISSELL® SpinWave® Cordless formula to the first formula fill line.



Screw the cap back onto the Clean Water Tank.



Slide the Clean Water Tank back into place until you hear a click.

**A few notes about filling the Clean Water Tank:**

- Fill with warm (140°F/60°C MAX) tap water and add the appropriate BISSELL solution. DO NOT USE BOILING WATER. DO NOT HEAT WATER OR TANK IN MICROWAVE.

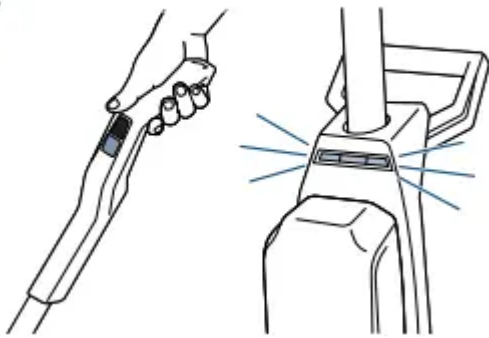
## Cleaning Sealed Hard Floors

**ATTENTION:** This machine is designed to be used only on sealed hard floors and should not be used on carpet or rugs. For best cleaning results, sweep or vacuum the floor surface prior to using to avoid scratching or damaging floors from sharp debris.

**TIP 1:** You may feel a slight vibration when turning on the machine if the mop pads are not aligned correctly. Wait a few seconds for the pads to adjust themselves. If this doesn't occur, turn the machine OFF and replace mop pads following the instructions in "Attaching Mop Pads" sections.

**TIP 2:** When you press the ON/OFF button to start the unit the LED lights will illuminate, but the mop pads will not start rotating until the unit is reclined.

1



When fully charged, press the ON/OFF button and the three LED lights will illuminate.

2

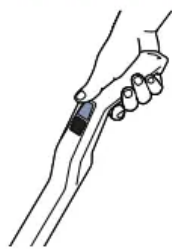


Recline the body of the unit backward to start the rotating mop pads.

**TIP 3:** For optimum cleaning, perform overlapping cleaning strokes while dispensing cleaning solution. Care should be taken to not overwet the floor surface, especially when cleaning wood and other delicate floor surfaces.

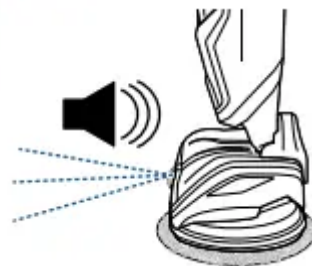
**TIP 4:** When cleaning near baseboards, edges or furniture you may feel a slight pull from the unit due to bouncing off the surface.

3



To clean, push the SPRAY button to dispense solution.

4



Solution will spray out of the nozzle on the front of the foot. You should hear a soft buzzing noise each time you press the SPRAY button to indicate solution being dispensed.

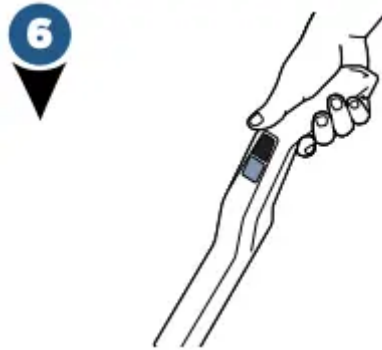
5



For more difficult and stuck on messes, spray solution directly on mess and line up one of the mop pads parallel to the mess. Move mop pad over mess and slowly move machine back and forth to clean, continuing to spray solution as needed.

**NOTE:** When finished cleaning, make sure to push the OFF button before standing the machine upright as the mop pads will continue to spin until the machine is turned OFF.

**NOTE:** If unit is on and gets placed in the upright position while still on, unit will go into standby mode. To power OFF, press the ON/OFF button or the unit will turn off by itself after 10 seconds of no action. You will know it is off when the LED lights are no longer illuminated.

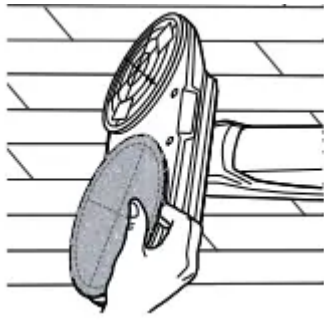


To power OFF the unit, press the unit ON/OFF button and put unit into upright position. The LED lights will turn off.

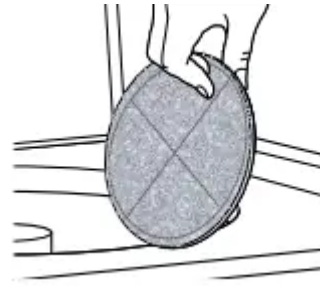
## Cleaning Your SpinWave® Cordless

**WARNING** Do not set the machine on carpet, rug or other fabric surface when mop pad is removed as hook and loop material on foot may damage them.

**WARNING** Do not store machine on wet mop pads as they may damage wood or other delicate floors.



1. To remove mop pads, simply pull pads off the hook and loop material on the bottom of the machine.



2. Machine wash separately in warm water. Use only liquid detergents. Do not use bleach or fabric softener. Tumble dry on low. Do not iron. Do not dry clean.



3. Store upright in storage tray in a dry, protected area until the next use. Since this product uses water, it must not be stored where there is danger of freezing. Store with dry mop pads. Wet mop pads may damage wood and other delicate, sealed hard floors.

**NOTE:** Any solution remaining in the Clean Water Tank should be emptied prior to machine storage.

**NOTE:** Store cleaner in a protected, dry area. Since this product uses water, it must not be stored where there is danger of freezing. Freezing may damage internal components and void the warranty

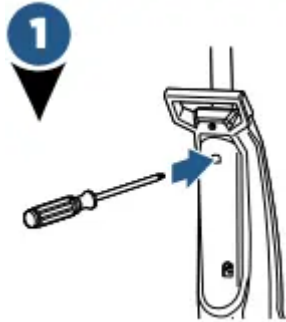
## Disposing the Batteries

**WARNING** This product contains lithium-ion rechargeable batteries. According to Federal and State regulations, removal and proper disposal of lithium-ion batteries is required. For removal of batteries in your SpinWave® Cordless, see instructions on this page.

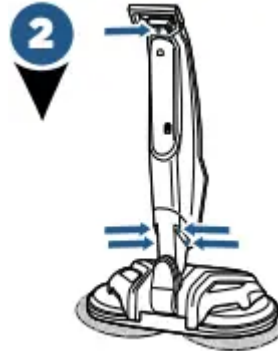
**NOTICE:** Disconnecting the battery will destroy the appliance and invalidate the warranty.

Before proceeding, ensure that:

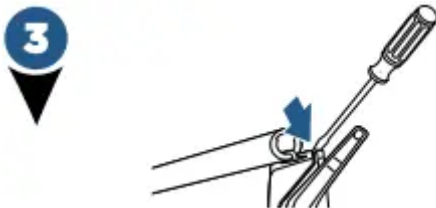
- The unit is disconnected from the charger.
- The Clean Water Tank has been removed from unit.
- You have flat-head and Phillips-head screwdrivers and rubber-handled wire cutters.



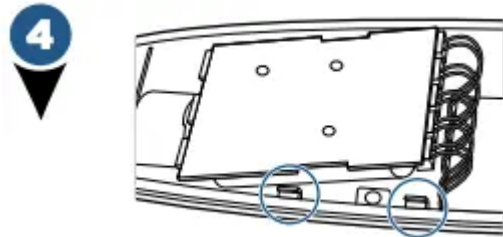
Insert a screwdriver into the hole on the back of the unit below the Carry Handle in order to disconnect the handle.



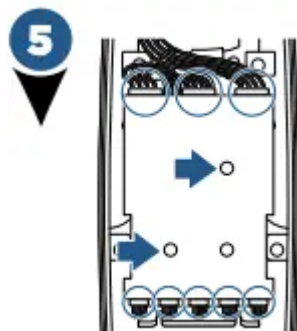
With a Phillips-head screwdriver, remove the 5 screws on the back of the unit.



Insert flat-head screwdriver between the top front and back plates located between the Carry Handle and main handle to remove the front body plate.



Remove the control panel with battery pack. For leverage, you may need to use the flat-head screwdriver to help remove.



Disconnect the 6 8 inputs that are connected to the control panel. Then, using a Phillipshead screwdriver, unscrew the two screws on the control board.



Pull the control panel back from the battery pack. Then, with rubber-handled wire cutters, clip the two metal poles to disconnect the battery pack from the control panel.

**NOTE:** Keep Battery Pack together – DO NOT separate individual batteries. For specific disposal instructions of batteries, please contact the RBRC (Rechargeable Battery Recycling Corporation) at 1-800-822-8837

## Troubleshooting

**WARNING** To reduce the risk of electric shock, turn power switch OFF and disconnect plug from electrical outlet before performing maintenance or troubleshooting checks.

<b>Problem</b>	<b>Possible causes</b>	<b>Remedies</b>
<b>Unit is vibrating/ wobbling</b>	Mop pads are not aligned with foot.	Realign the mop pads on the foot.
<b>Reduced spray OR no spray</b>	Clean Water Tank may be empty	Refill tank.
	Clean Water Tank may not be seated completely.	Turn power OFF. Remove and Reseat Tank.
	System isn't completely primed.	Hold trigger for 10 to 15 seconds to make sure the solution has flowed to the spray tips.
	Not holding trigger to spray solution.	Hold trigger continuously while using the machine.
	Spray tips on foot clogged.	Turn power OFF. Use a pin to clean the spray tip located front and center of the machine.
<b>Spin plates are not turning or are wobbling</b>	Mop pads are not installed properly.	Turn Power OFF and follow instructions on page 6 for replacing mop pads.
	Machine is standing upright.	Recline machine
<b>Machine is leaking</b>	Cap of Clean Water Tank is not closed properly.	Remove the Clean Water Tank and re-apply the cap.
<b>Unit will not charge</b>	Charger plug/cord not connected.	Make sure charger plug is completely plugged into wall outlet and charging cord is completely plugged into port on the back of unit.
	Not the correct charger	Use only the charger that comes with machine.
<b>All three (3) LED lights flashing</b>	Pads forced to stop spinning, potentially due to stuck debris, compressed under furniture or was briefly stepped on.	Turn the unit off or wait 10 seconds for the lights and machine to turn OFF. Then, press the ON/OFF to start the unit again.
	Heavy and extended usage may cause internal temperature of	

	machine to warm up slightly past the typical operating temperature	Press power button on handle one time and wait for unit to cool down and reset.
<b>Two (2) LED lights flashing</b>	Functional issue with machine	Contact us for additional assistance.

**Warning**

This content is compiled from multiple sources and is provided for reference purposes only. It may not be complete or fully applicable to all situations. If you are unable to resolve your issue, please contact the product manufacturer or an authorized service provider for official support.

