

User manual Stacking Kit

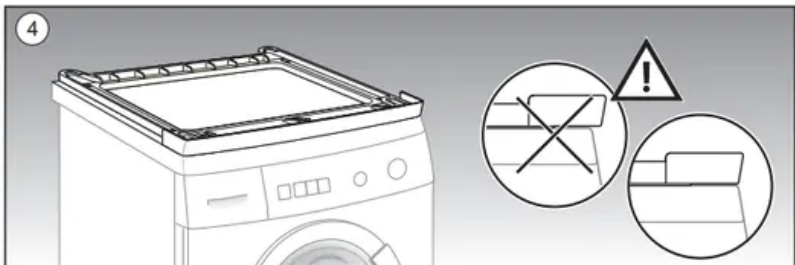
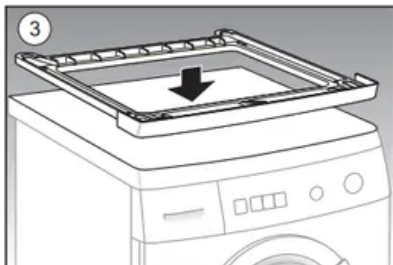
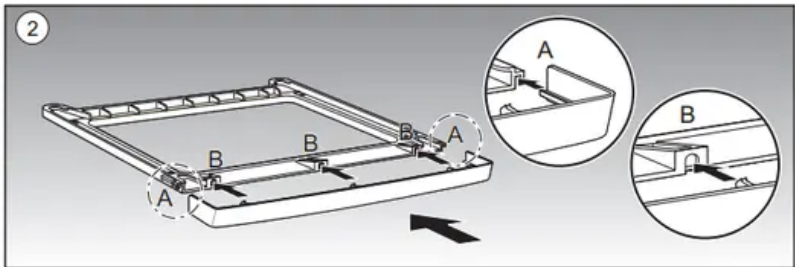
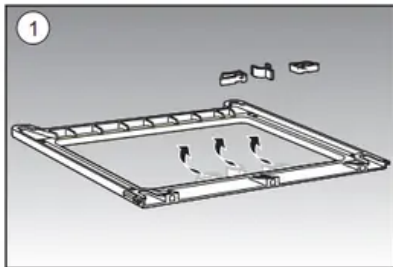
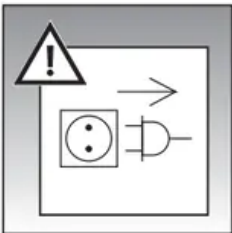
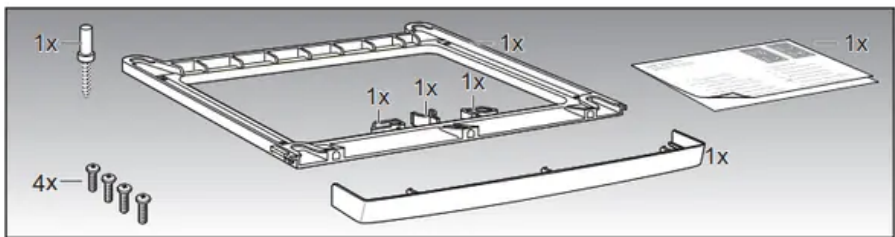
Technical Data

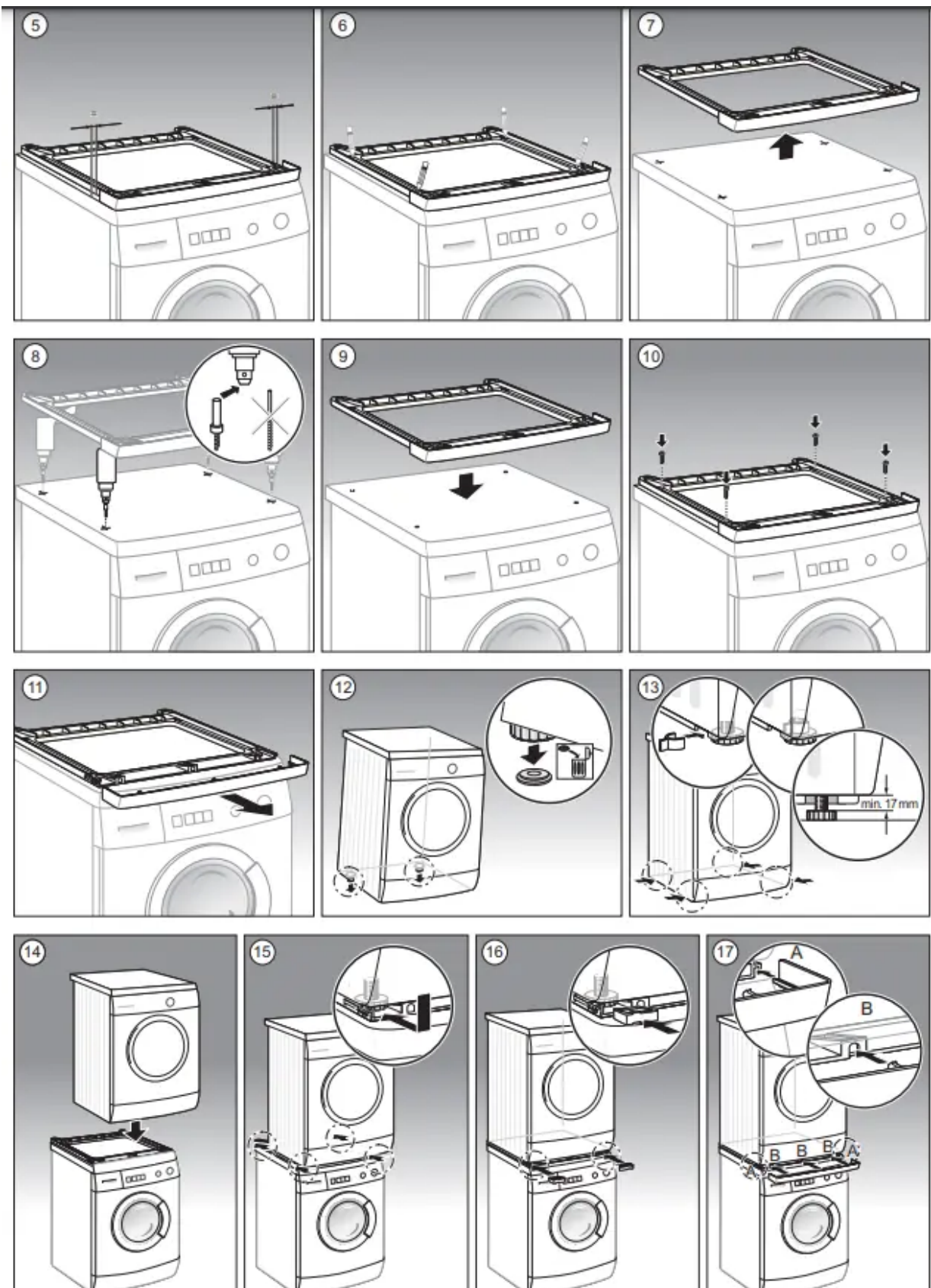
- Technical Data
- Dimensions including packaging HxWxD: 40 x 550 x 600 mm
- Pallet dimensions : 120.0 x 80.0 x 120.0
- Standard number of units per pallet : 90
- Net weight : 0.5 kg
- Gross weight : 0.9 kg
- EAN code : 4242002386409

Features

- Stacking kit with pull-out shelf for washing machines and tumble dryers
- Allows you to stack tumble dryer on top of washing machine
- Stacks the appliances safely, preventing them moving or falling
- Stylish space-saving solution
- For 60cm wide appliances
- Tested and approved accessory

Assembly instruction





Question & answers

1. Can you stack a fridge on top of a dryer with this kit?

- Wouldn't recommend putting a fridge on top of a dryer but as long as the feet centre's match the frame there shouldn't be a problem

2. What are the dimensions please???

- I used it to mount a Bosch Classicx7 Tumble dryer on top of a Bosch Exxcel 7 washing machine. Top dimensions of washing machine are 59.5 cms across and 52.5 cms front to rear.

3. Will this work with a Beko W/ Machine plus tumble dryer

- Depends on dimensions of washing machine. see my previous response

4. What happens if you don't use a stacking kit?

- This is why it's always crucial to get a stacking kit. If you don't, your dryer sits on top of your machine without support. Tumbling of either can make it fall out of place or even fall to the ground which is dangerous and will most likely damage both your machine and your floor.

5. Is there a downside to stacking washer and dryer?

- And they don't necessarily have all the bells and whistles available on separate machines. Additionally, if one machine in the integrated unit fails before the other, you may have to replace the entire laundry center instead of merely buying a new washer or a new dryer only.

6. Can you use any stacking kit to stack your washer and dryer?

- Unfortunately, there is not a universal stacking kits for all stackable washer and dryer units. There are different stacking kits out there, each designed to specifically to fit selected models for a specific brand like, Samsung, GE, Whirlpool, Bosh, etc

7. How do I remove a stacked switch?

- If you want to remove the switch from the stack configuration, issue the command: no member <unit-id>....
- If you did not intend to partition the switch stack:
 1. Power off the newly created switch stacks.
 2. Reconnect them to the original switch stack through their stacking ports.
 3. Power on the switches.

8. How do you stack Bosch washer and dryer?

Our step-by-step guide to stacking your front load machines safely.

1. Pick a stackable washer and dryer model. ...
2. Consider your space. ...
3. Level your washing machine. ...
4. Use a stacking kit. ...
5. Tape on anti-slip strips. ...
6. Place the dryer on top of the washing machine. ...
7. Optional: Use a fastening strap.

Warning

This content is compiled from multiple sources and is provided for reference purposes only. It may not be complete or fully applicable to all situations. If you are unable to resolve your issue, please contact the product manufacturer or an authorized service provider for official support.