

Before placing your iPod player onto the speaker dock you need to install the dock insert corresponding to the particular iPod model into the speaker dock.

Whenever you place your iPod player onto the speaker dock it will recharge when the POWER button is in the ON position. Do not use rechargeable batteries.

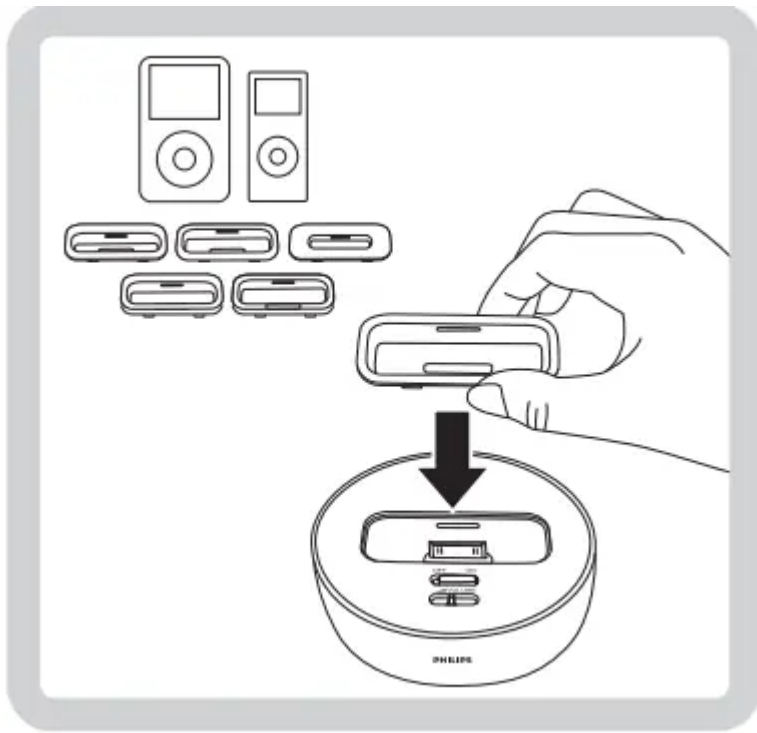
Design and specifications are subject to change without notice. Some Audio formats do not support Dynamic Bass Boost

Problem solving: www.philips.com/welcome

If a fault occurs. please check the points listed below:

- + Check all cables to ensure they are connected correctly
- + Check if the batteries are fully charged and are in place correctly
- + Check if the iPod player is inserted correctly; undock the player. check for any obstruction on the connectors and dock again.

If you are unable to remedy a problem following these hints. contact online help (www.philips.com/welcome) or consult your dealer. Never try to open the set yourself as this will void the guarantee!



Warning

This content is compiled from multiple sources and is provided for reference purposes only. It may not be complete or fully applicable to all situations. If you are unable to resolve your issue, please contact the product manufacturer or an authorized service provider for official support.