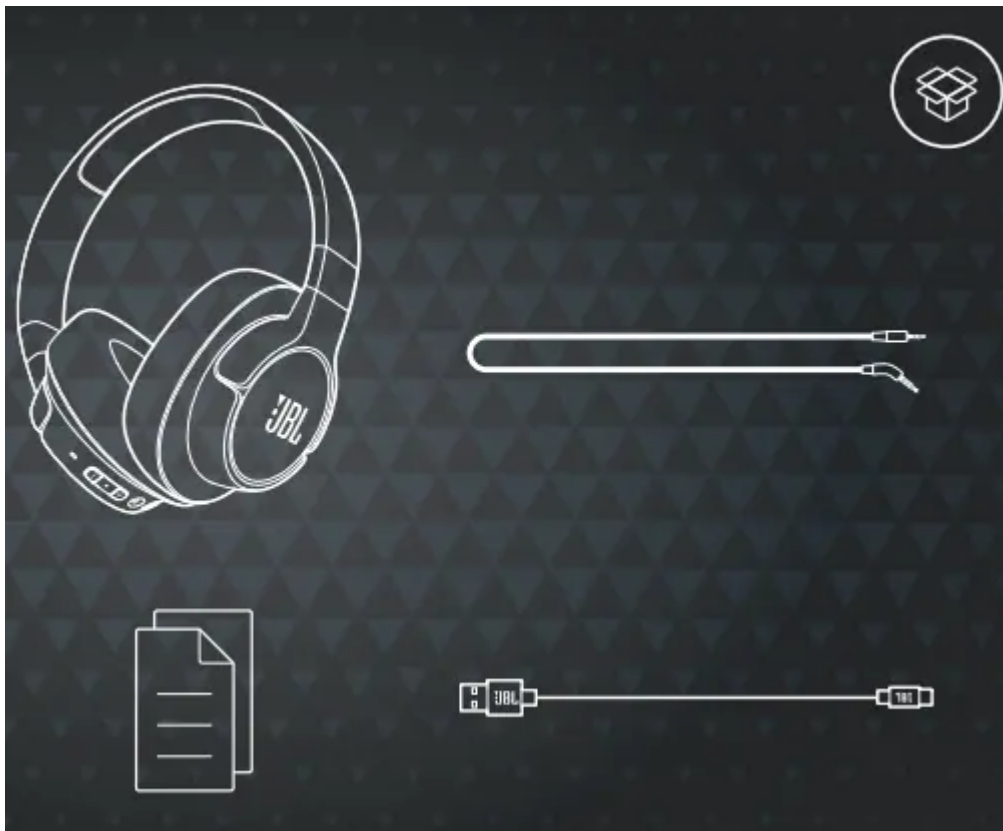
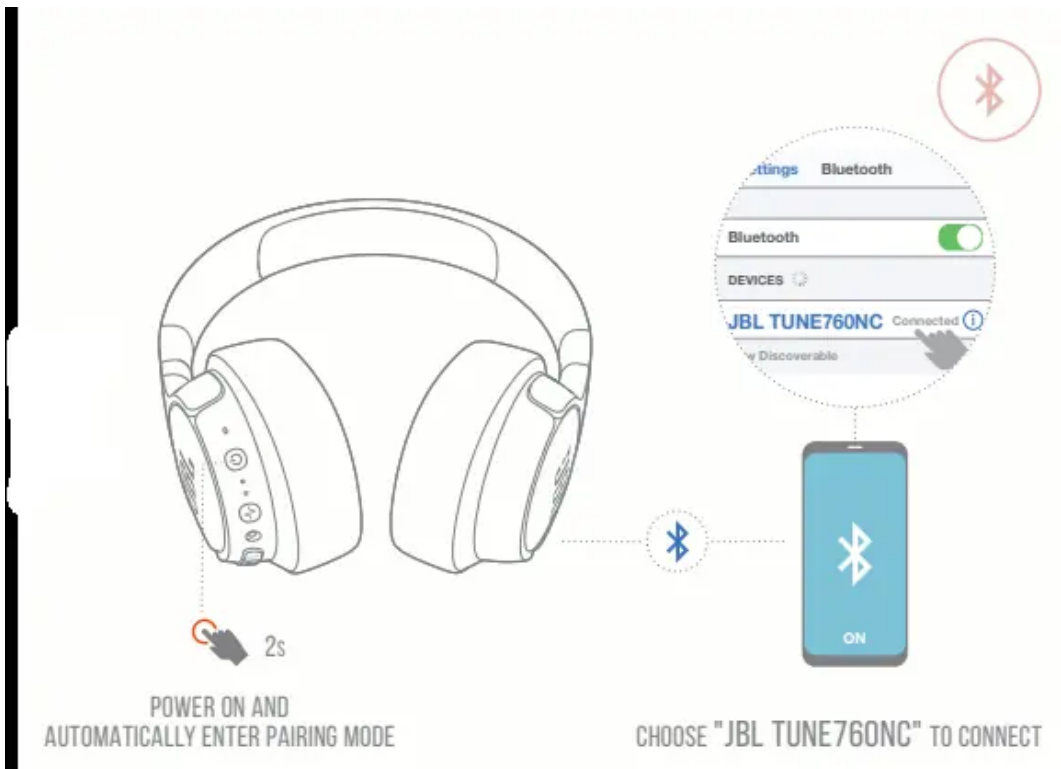


What's in the box



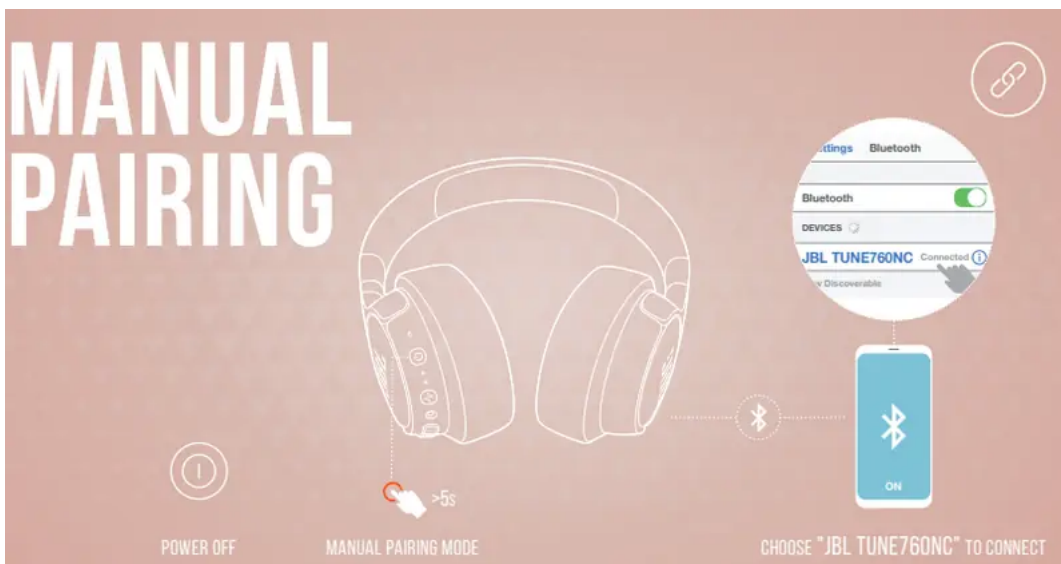
Power On & Connect



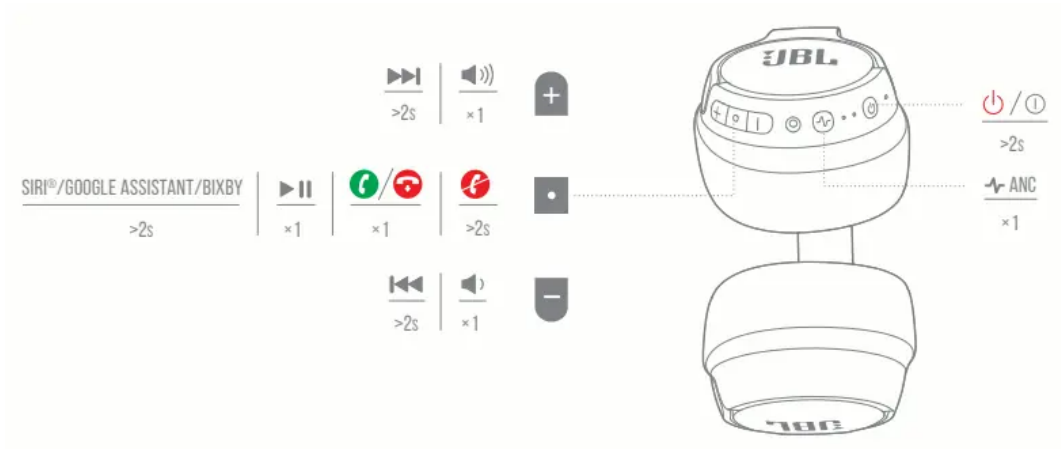
Power on and automatically enter pairing mode

Choose "JBL TUNE760NC" to connect

Manual Pairing



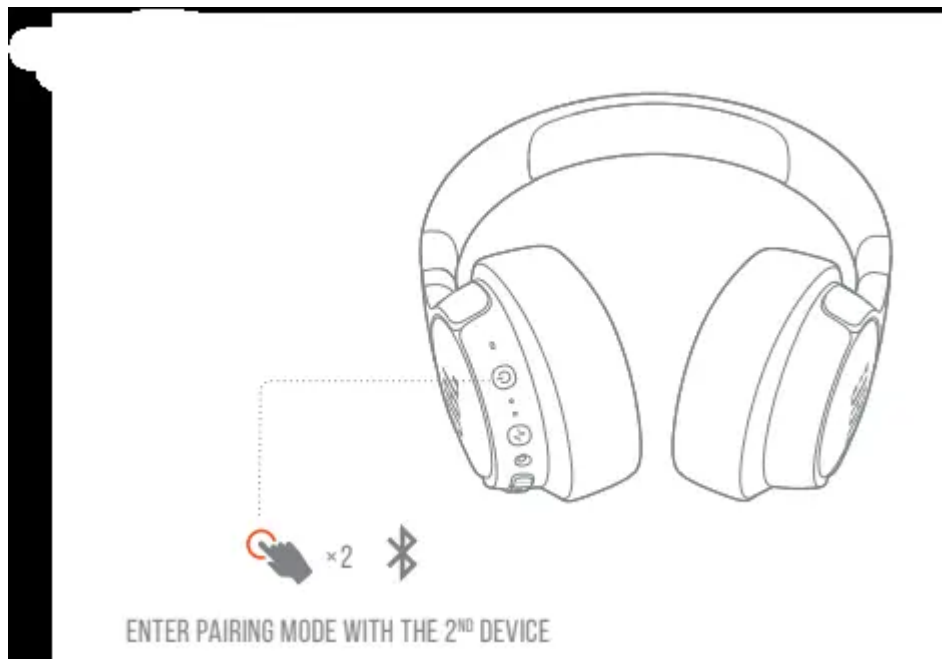
Button Command



Wired listening



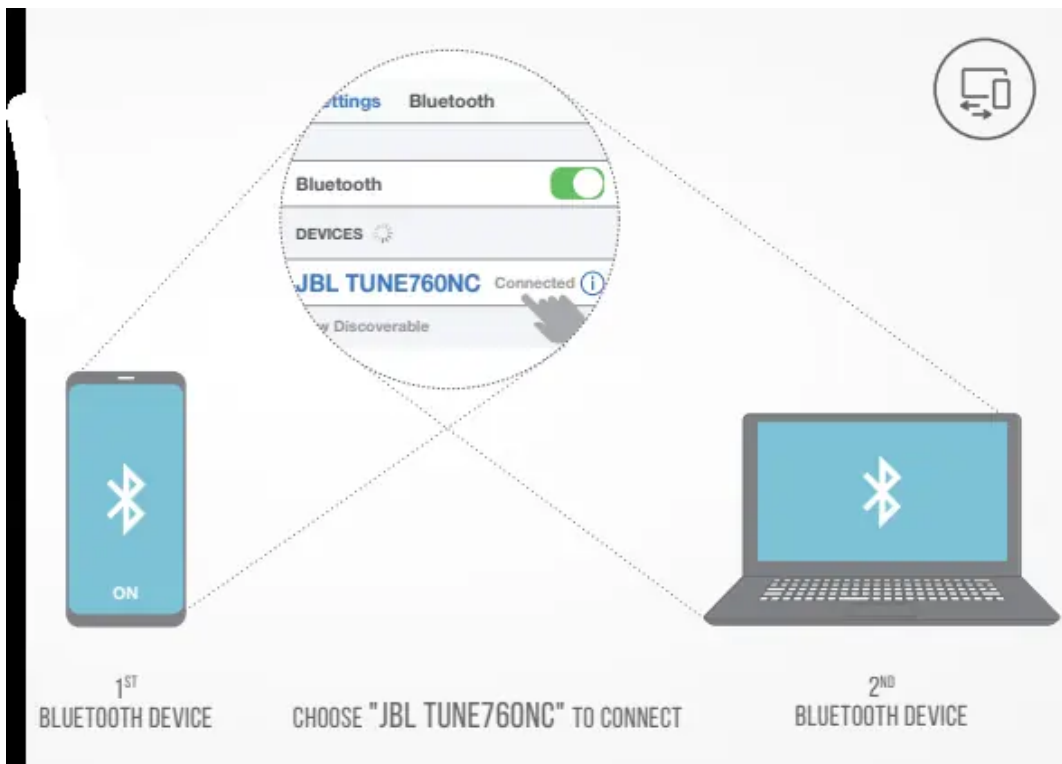
Multi-point Connection



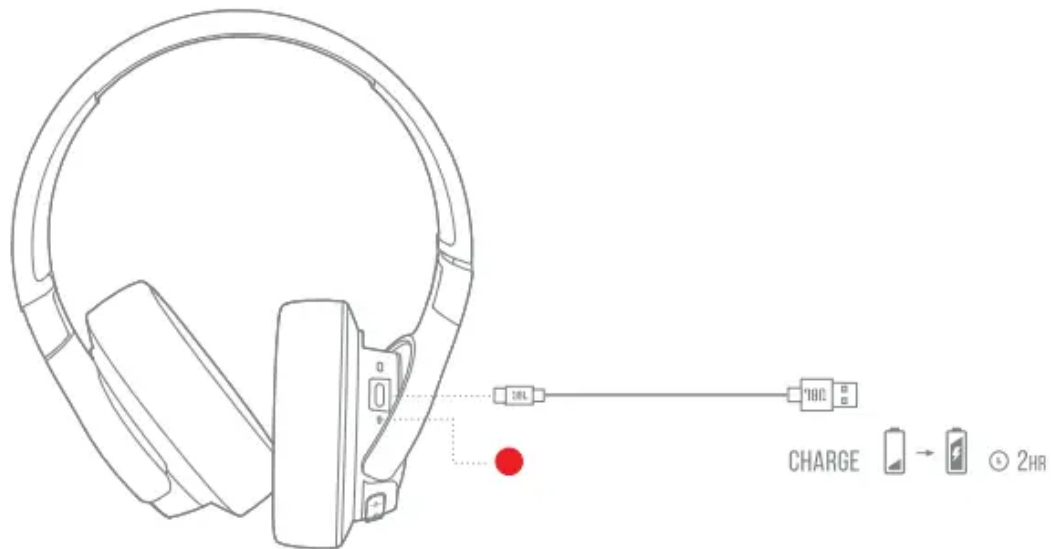
Enter pairing mode with the 2nd device

* (Maximum 2 devices)

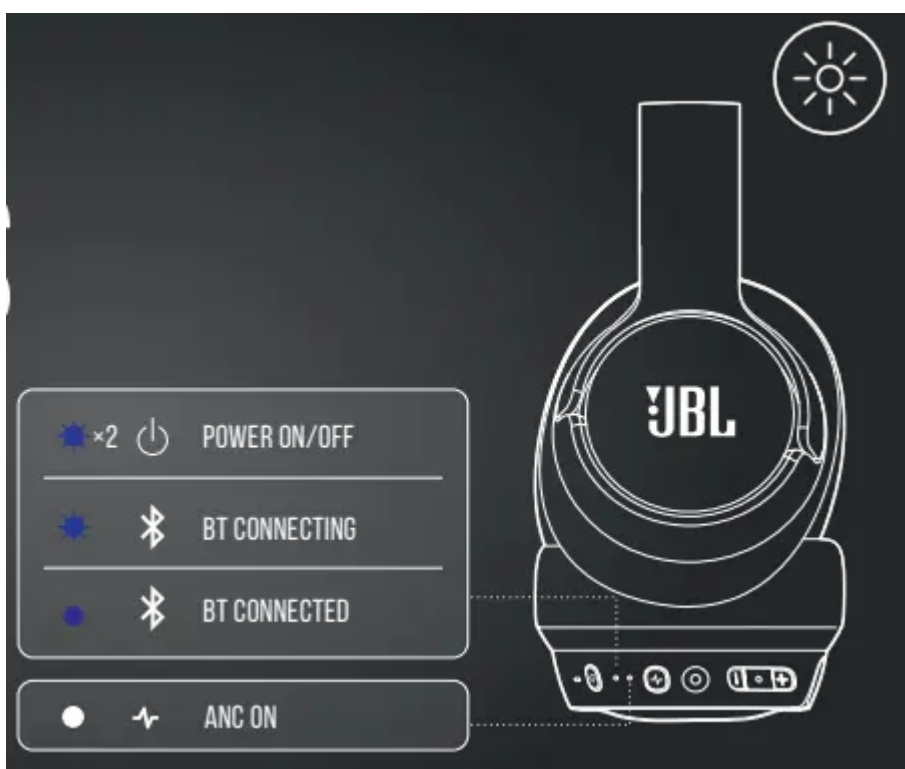
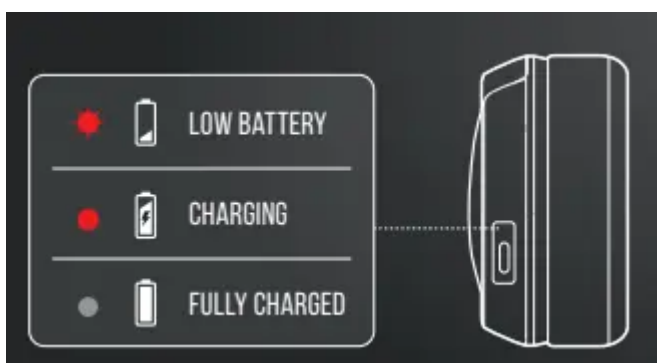
1. To switch music source, pause the music on the current device and select play on the 2nd device.
2. Phone call will always take priority.
3. If one device goes out of bluetooth range or powers off, you may need to manually reconnect the remaining device.
4. SELECT "forget this device" on your bluetooth devices to disconnect multi-point.



Charging



Led Behaviors



Technical Specifications

Model: TUNE760NC

Driver size: 40 mm Dynamic Driver

Power supply: 5 V 1 A

Weight: 220 g / 0.485 lbs

Headset battery type: Polymer Li-ion battery (610 mAh / 3.7 V)

Charging time: < 2 hrs from empty

Music play time with BT on and ANC on: 35 hrs

Music play time with BT on and ANC off: 50 hrs

Frequency response: 20 Hz - 20 kHz Impedance: 32 ohm

Sensitivity passive mode: 103 dB SPL/1 mW

Sensitivity active mode: 95 dB SPL/1 mW

Maximum SPL: 95 dB

Microphone sensitivity: -30 dBV/Pa

Bluetooth version: 5.0

Bluetooth profile version: A2DP 1.3, AVRCP 1.5, HFP 1.6

Bluetooth transmitter frequency range: 2.4 GHz - 2.4835 GHz

Bluetooth transmitted power: < 10 dBm

Bluetooth transmitted modulation: GFSK, $\pi/4$ DQPSK , 8DPSK

Maximum operation temperature: 45 °C

Warning

This content is compiled from multiple sources and is provided for reference purposes only. It may not be complete or fully applicable to all situations. If you are unable to resolve your issue, please contact the product manufacturer or an authorized service provider for official support.