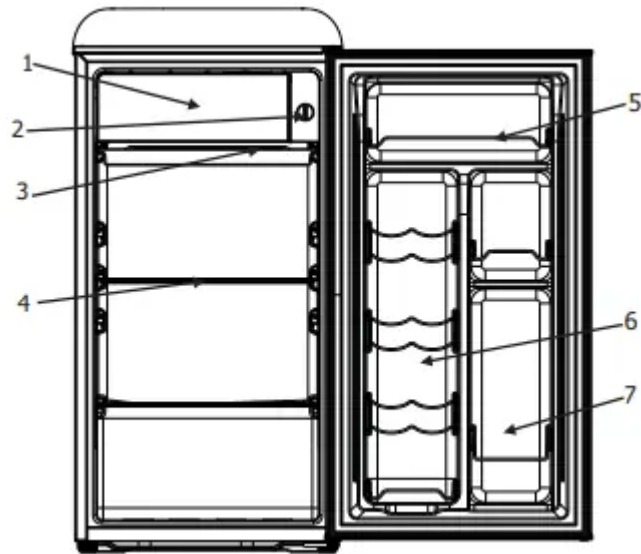


## PARTS AND FEATURES



1. Freezer compartment
2. Temperature control dial
3. Drip tray
4. Removable shelf
5. Bottle storage
6. Can dispenser
7. Tall Bottle storage

### IMPORTANT SAFETY INSTRUCTIONS

When using electrical appliances, basic safety precautions should always be followed to reduce the risk of fire, electrical shock, and/or injury to persons, including the following:

Read all instructions before using the appliance.

1. This appliance must be grounded. Connect only to properly grounded outlet.

See Important Grounding Instructions on page 3.

2. Install or locate this refrigerator only in accordance with the provided Installation Instructions.

3. To protect against electric shock, do not place cord, plug, or refrigerator in water or other liquid.

4. Close supervision is necessary when any appliance is used by or near children.

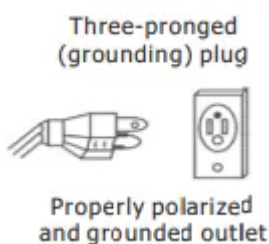
5. Do not operate this appliance if it has a damaged cord or plug, if it is not working properly, or if it has been damaged or dropped.
6. This appliance should be serviced only by qualified service personnel. Contact your nearest authorized service facility or call our toll-free customer service number for information on examination, repair, or adjustment.
7. Do not cover or block any openings or air vents on this appliance.
8. Do not store this appliance outdoors. Do not use this appliance near water. For example, do not use near a kitchen sink, in a wet basement, near a swimming pool, or similar locations.
9. Do not locate this appliance near heat sources or open flames.
10. Do not use or store gasoline or other flammable vapors and liquid in the vicinity of this or any other appliance. The fumes can create a fire hazard or explosion.
11. Do not place heavy objects or magnet items on top of the refrigerator.
12. The refrigerant of this product is R600a, which is flammable. Make sure not to damage the cooling system during the transportation and installation.
13. To minimize the risk of possible ignition due to improper service or the use of incorrect parts, this unit must be serviced by factory authorized personnel only.

## IMPORTANT GROUNDING INSTRUCTIONS

This appliance must be grounded. In the event of an electrical short circuit, grounding reduces the risk of electric shock by providing an escape wire for the electric current. This appliance is equipped with a cord having a grounding wire with a grounding plug. The plug must be plugged into an outlet that is properly installed and grounded.

**WARNING**-Improper use of grounding can result in a risk of electric shock.

1. Consult a qualified electrician or serviceman if the grounding instructions are not completely understood or if doubt exists as to whether the appliance is properly grounded.
2. If it is necessary to use an extension cord, use only 3-wire extension cord that has a 3-blade grounding plug, and a 3-slot receptacle that will accept the plug on the appliance. The marked electrical rating of the extension cord shall be equal to or greater than the rating of the appliance.



## INSTALLATION INSTRUCTIONS

1. Before using the refrigerator for the first time. remove all of the packing materials.
2. The refrigerator should be located on a firm. flat surface that is strong enough to support the refrigerator when it is fully loaded.
3. Choose a location that is not exposed to direct sunlight. high temperatures. heat
4. Leave a minimum of ½" between each side of the appliance and the wall. The top
5. The refrigerator legs must be adjusted during installation in order to function

## OPERATING INSTRUCTIONS

1. Allow refrigerator to stand upright for 4 hours before using.
2. Plug into a grounded outlet or appropriate extension cord (see Important Grounding Instructions).
3. The temperature of refrigerator can be controlled



4. Food should be kept in sealed containers to prevent
5. Hot food should be cooled down before placing into the appliance to prevent
6. Reducing the frequency of door opening can lower power consumption.

## CLEANING

### Interior

Clean the interior of the appliance with a mixture of warm water and baking soda. using about 1-2 tablespoons per quart of water. Use a sponge or soft cloth and be sure to wring excess moisture out before cleaning around the controls.

Rinse thoroughly with warm water and dry with a clean. soft cloth.

### Exterior

The exterior surface can be cleaned using warm water and a mild detergent.

Rinse thoroughly and dry with a clean. soft cloth.

### Door Gasket

The door gasket must be kept clean to ensure a proper seal. Be sure to clean the gasket frequently, using the method described above.

## DEFROSTING

Frost build-up on the walls of the freezer section will increase energy consumption and reduce the efficiency of the appliance. Defrost the freezer section whenever the frost reaches a thickness of ¼".

1. Remove food from the refrigerator and freezer compartment.
2. If your model has a drip tray, be sure to place it under the freezer compartment
3. Turn the unit off and unplug it from the outlet.
4. The defrosting process can take several hours. Open the door to speed up the process.
5. When defrosting is completed, wipe the compartment with a soft cloth to remove any remaining water.
6. Reset the refrigerator temperature, following the operating instructions on page 4

**ATTENTION:** Do not use sharp or pointed objects to remove frost or ice from the surfaces of the freezer compartment. This can cause damage to the compartment walls and cooling coils, and will void the warranty.

## POWER FAILURE

When a power failure occurs, the refrigerator can normally store food for several hours. Do not put additional food into the appliance during a power failure, and do not open door. Disconnect the plug from the outlet, and reconnect when the power has been restored. Always inspect for, and discard, any spoiled or thawed food in the refrigerator or freezer before resuming use of the appliance.

## VACATION

Before leaving on any vacation, remove food that could spoil while you are gone. If you plan to be for an extended period of time, we recommend that all of the food should be removed from the appliance and it should be turned off and unplugged from the outlet. Clean the interior according to the directions provided in the Cleaning section of this manual, and leave the door open.

## MOVING THE REFRIGERATOR

1. Turn off the refrigerator and unplug from the outlet.
2. Remove all food and securely tape down all loose items inside.

3. Tape the door shut.
4. Do not lift or pull the door of door handle during transportation.
5. When moving, the appliance can not be tilted over 45 degrees as possible
6. Take care to avoid strong vibration or impact to the appliance.

## SPECIFICATIONS

Climate	T	
Electric shock protection type	I	
Capacity (cu.ft)	3.3	
Voltage (VAC)	120	
Frequency (Hz)	60	
Current (A)	0.8	
Voice [dB(A)]	≤42	
Refrigerant	R600a/0.81oz	
Net weight	46.3lbs	
Interior temperature (F)	32~46.4	
Unit dimensions (in inches)	Width	17.60
	Depth	21.02
	Height	35.43

## TROUBLESHOOTING TIPS

<b>Problem</b>	<b>Possible Cause</b>	<b>What to do</b>
Refrigerator does not operate	Not plugged in tightly	Unplug, wait 10 seconds, then plug in again
	Tripped circuit breaker or blown fuse	Replace fuse or reset circuit breaker
	Problem with electrical outlet	Consult with a professional electrician
Refrigerator seems too warm/food does not seem to cool	Temperature setting may be too warm	Lower the temperature setting
	Door opened too frequently	Check to make sure nothing inside is causing the door to not close
	Warm weather	This is normal
Compressor runs too long, or cycles on and off frequently	Hot weather	This is normal
	Door opened too frequently	Check to be sure nothing inside the refrigerator is preventing the door from closing
	Temperature control set at coldest setting	Adjust temperature to a warmer setting
	Large amounts of food placed in refrigerator	This is normal
Moisture forms on the outside of the appliance	This is normal during periods of high humidity	Wipe the surface dry using a soft cloth
	The door is slightly open	Close the door tightly
Moisture forms on the inside of the appliance	This is normal during periods of high humidity	This is normal
	Door is opened too long or too frequently	Do not open the door too long or too frequently

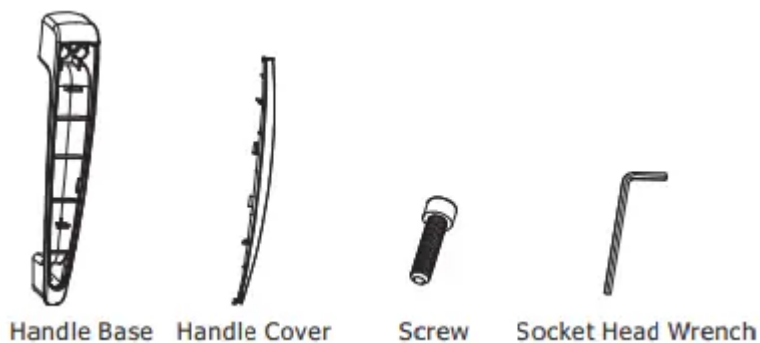
Vibration noise	Refrigerator is on an uneven surface	Adjust the leveling legs
	Refrigerator is touching a wall	Move the refrigerator away from the wall

The following are normal conditions that can be encountered during the operation of this appliance:

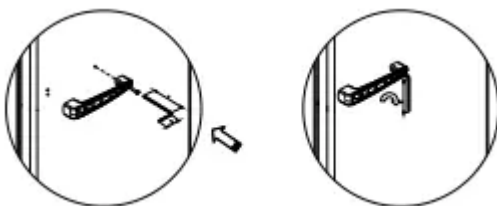
- The flow of refrigerant through the coils can cause a noise.
- The sides of the appliance may become warm as a result of the cooling function.

## INSTALL THE HANDLES

1. Take out accessory from packing bags: one handle, one handle cover, and three screws.
2. Prepare a cross screwdriver.



4. Make sure the three screw holes in the shake hands are aligned with those in the door, and then respectively screw them together. The right side one is suggested to be preferred to be screwed down



5. Install handle cover on the handle.

Tips for the Steps to Install:

- (1) Buckle the handle on the left side first.
- (2) Buckle the handle on the left side.
- (3) Buckle the middle part of the handle tightly in the end. And a click can be heard if the handle is properly installed.



### **Warning**

This content is compiled from multiple sources and is provided for reference purposes only. It may not be complete or fully applicable to all situations. If you are unable to resolve your issue, please contact the product manufacturer or an authorized service provider for official support.