

OWNER'S MANUAL Ceramic Tower Heater

- 

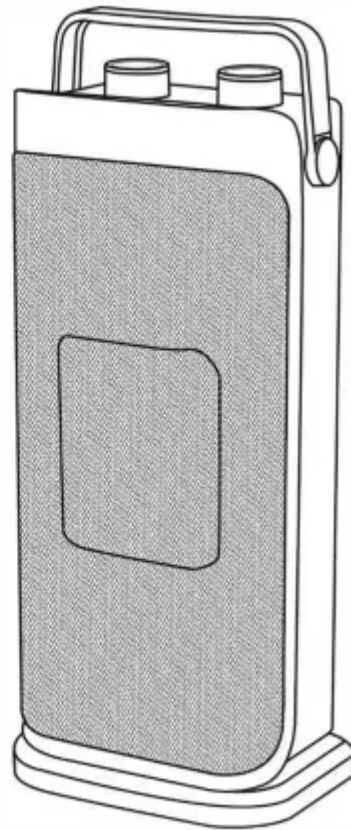
2 Heat settings:
750W / 1500W
- 

3 Modes:
fan / low / high
- 

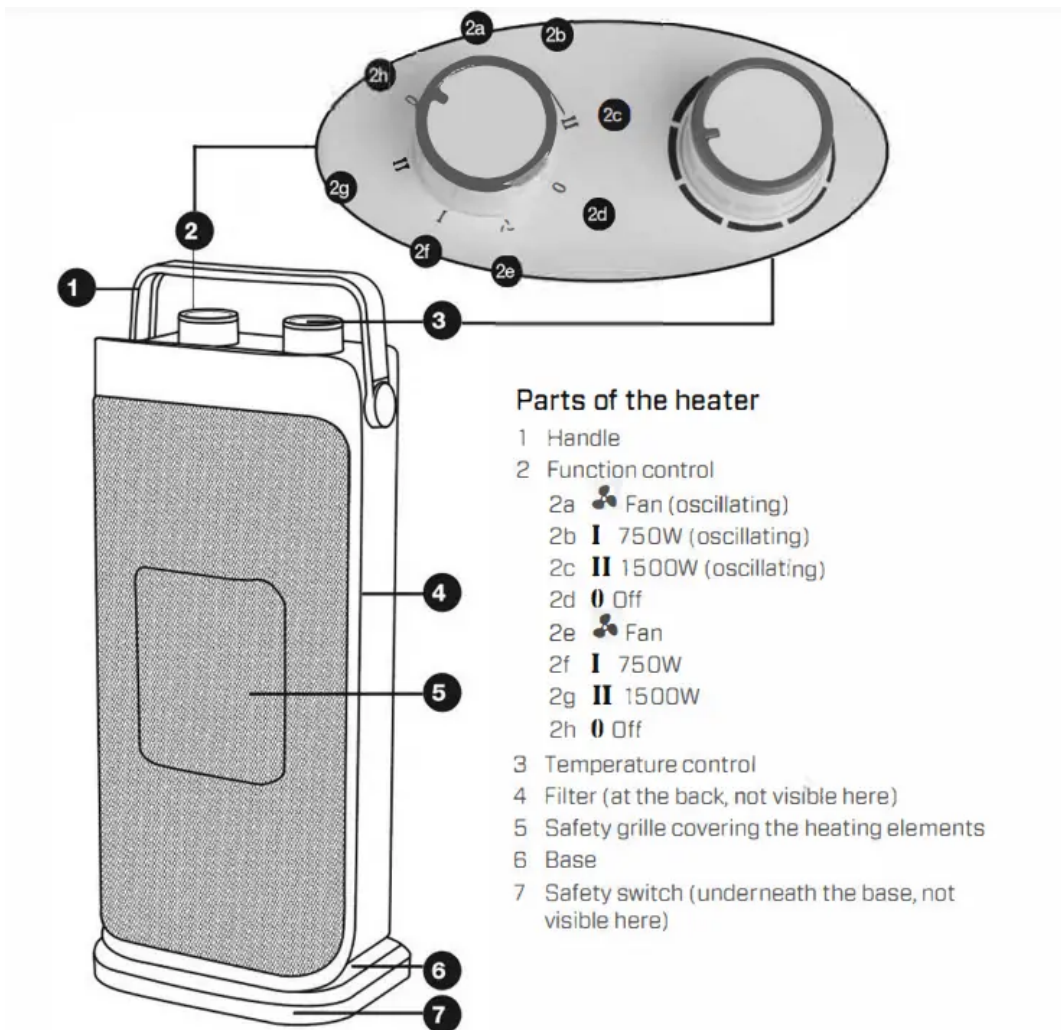
Oscillating
function
- 

Tip over
safety switch
- 



Overheat
protection



Product Overview





Parts of the heater

- 1 Handle
- 2 Function control
 - 2a  Fan (oscillating)
 - 2b **I** 750W (oscillating)
 - 2c **II** 1500W (oscillating)
 - 2d **0** Off
 - 2e  Fan
 - 2f **I** 750W
 - 2g **II** 1500W
 - 2h **0** Off
- 3 Temperature control
- 4 Filter (at the back, not visible here)
- 5 Safety grille covering the heating elements
- 6 Base
- 7 Safety switch (underneath the base, not visible here)

Parts of the heater

1. Handle

2. Function control

- 2a  Fan (oscillating)
- 2b **I** 750W (oscillating)
- 2c **II** 1500W(oscillating)
- 2d **0** Off
- 2e  Fan
- 2f **I** 750W
- 2g **II** 1500W

° 2h **0** Off

3. **Temperature control**
4. **Filter (at the back, not visible here)**
5. **Safety grille covering the heating elements**
6. **Base**
7. **Safety switch (underneath the base, not visible here)**

NOTE: Due to continued product improvement, images and illustrations in this manual may vary slightly from the product purchased. All images in this manual are for reference purposes only
Parts are not necessarily pictured to scale

Getting Started

Before first use

- **Unpack:** This product has been packaged to protect it against transportation damage. Unpack the appliance and keep the original packaging and materials in a safe place. It will help prevent any damage if the product needs to be transported in the future, and you can use it to store the appliance when it is not in use. In the event that the packaging is to be disposed of, please recycle all packaging materials where possible.
- **Safe packaging disposal:** Plastic wrapping can be a suffocation hazard for babies and young children, so ensure all packaging materials are out of their reach and disposed of safely.
- **Cord:** Inspect the power cord and plug, and all other parts of the appliance, for visual damage. Do not use the appliance if anything appears to be damaged or not working properly. In case of damage, return the product to your local store.
- **Documentation:** Make sure you have read and understood all instructions and warnings in this manual. Refer to the Product Overview to familiarise yourself with the product and identify all parts. Pay particular attention to the safety instructions on the previous pages.

NOTE: Portable electric heaters are designed for spot heating, or as a supplementary heat source. They are not intended to be main sources of heat during the normal heating season.

Operating Instructions

Using the heater

Location

- Place the heater in an upright position on a firm, level, dry and heat-resistant floor surface, taking into considering all relevant safety information on the previous pages
Avoid placement on carpets in order to prevent failure of the safety switch
- The heater is for floor-standing use only Ensure that there is sufficient distance from the wall, fixtures and other appliances. The distance at the front must be at least 1m to exclude the risk of fire

Connection

- Make sure both controls are in the OFF [0 / -] positions, then plug the heater into an appropriate electrical outlet and switch on power to the outlet
- Always use a separate socket that has no other high wattage appliances connected at the same time - do not plug it into a power board or socket adaptor; do not use an extension cord

When turning on your heater for the first time, it is normal for the heater to emit a 'new heater smell, which will quickly pass. This is no cause for concern Ensure good ventilation

Setting the temperature

The heater has a thermostat, which you can set to maintain the room temperature at the desired level

- Turn the knob clockwise to the highest setting [+] until the room is comfortably warm
- When the room temperature is comfortable, slowly rotate the knob anticlockwise (turn to the left) until the heater cycles off audibly and the indicator light turns off. The heater will now cycle on and off to maintain the room temperature at this set level

Selecting a function

The function control has 8 settings, as listed below



Fan + Oscillation



750W + Oscillation



1500W + Oscillation

0 Off

 Fan

I 750W

II 1500W

0 Off

Oscillation


The heater has an oscillation (swing) function of approximately 45°, which helps to provide uniform heating or ventilation

- On the first 4 positions of the function control (turning clockwise), the appliance works w/ fh oscillation. On the remaining 4 positions, it works w/fhout oscillation
- To stop the swing while the appliance is oscillating, wait until the airflow is in the desired direction, then turn the function control to [0] before selecting the relevant output function without oscillation

CAUTION: Never attempt to adjust the swiveling mechanism manually, as it could damage the heater.

Fan operation

The heater is equipped with a fan, which can be used to run the appliance without heat output.

- Turn the function control to the fan  icon and the temperature control to the highest position [+] to run the appliance as a fan only, without heat output

Switching off

- When you no longer need the heater, turn the function control to an OFF [0] position and the temperature control to the minimum position [-]
- Unplug the heater from the power source

Safety features

Overheat protection

This heater is equipped with an automatic reset temperature control (overheat protection), which switches the heater off automatically in the event of abnormal overheating While this feature

provides additional safety in case of overheating, first and foremost you should make sure to eliminate all potential reasons that can lead to overheating and create a fire risk

- If the overheat protection has been triggered, turn the function control to the [0] position and unplug the heater from the wall outlet Let the heater cool for about 10 minutes. Eliminate the cause of the overheating

Tilt protection {tip over switch}

The appliance is fitted with a tip over safety switch, which switches the heater off automatically if it is tilted or tips over. This prevents hazards caused by overheating , Should this happen, place the heater upright again, but take care as it may still be hot The heater will turn on again automatically once it is back in an upright position **WARNING:** Always place the appliance on a smooth, horizontal surface Avoid carpets in order to prevent failure of the safety switch

Other Useful Information

WARNING!

- Before attempting any maintenance or cleaning the heater, switch off and disconnect the appliance from the power supply and wait until it has cooled down
- Do not use abrasive cleaning powders, furniture polish, solvents, or wire brushes, as these can damage the surface finish. Do not immerse the cord, plug or heater in water or other liquids for cleaning. Do not allow water to enter part of the appliance
- Do not attempt to repair the heater yourself Any repairs must be carried out by a qualified technician

Cleaning and maintenance

- If the outside of the heater needs cleaning, wipe it with a soft, dry cloth Use a slightly damp cloth, if necessary, and then dry it with a dry cloth Allow some time for the heater to dry thoroughly before reconnecting it to the power supply
- To clean the filter, remove the screw that holds the air intake grille in place at the back of the appliance Open the grille and remove the filter Clean the filter under running water, then let it air-dry thoroughly before reinstallation **CAUTION:** Do not reinstall the filter until it is completely dry

Storage

- If you are not going to use the heater for a while, please unplug it at the wall outlet
- Store the appliance in its original packaging, to protect it from dust, in a cool and dry place, out of children's reach

Technical specifications

Power	150DW, 120 V AC, 60Hz
Modes/Features	Fan, Low Power, High Power, Oscillation
Dimensions (approx.)	767X5.79X1672 in
Weight (approx.)	4.44lbs

Important Safety Instructions

Electrical safety and cord handling

- **Voltage:** Before plugging in the heater, make sure your outlet voltage and circuit frequency correspond to the voltage stated on the appliance rating label
- **Electrical circuit:** Always plug this heater into a separate wall outlet socket, which must withstand 12.5A load. To ensure you do not overload the circuit, do not operate another high-wattage product on the same circuit
Connection: To insert the plug, grasp it firmly and guide it into the outlet

WARNING! No adaptor, no extension cord: Do not use the heater with a power board, double adaptor or extension cord, as these may overheat and create a fire risk.

- **Protect the power cord:**

- Do not operate the heater with the cord coiled up; always fully unwind
- Do not twist or kink the cord or let it touch heated surfaces
- Do not pull the cord.
- Never carry the heater by the cord -Arrange the cord away from any traffic areas so no one will trip over it
- Do not run the cord under carpeting or cover it with rugs, runners, etc

- **WARNING! To reduce the risk of fire, electric shock or injury:**

- Never touch the heater with wet or damp hands or feet
- Do not use the heater if any part of it has become wet Immediately call a qualified service technician to inspect the heater and replace any part got wet
- Never spill liquid into the heater, never immerse the cord, plug or any part of the appliance in water or other liquids

- Do not reach for an appliance that has fallen into water Switch off and unplug immediately
- Damaged cord: Check the power cord regularly for visible damage If the cord is damaged, it must be replaced by the manufacturer or appropriately qualified personnel, in order to avoid any hazards
- **WARNING!** Damaged heater: Do not pick up or operate the appliance if the power supply cord, plug or housing is damaged, after it malfunctions, or has been dropped or damaged in any manner r Plug: It is normal for the plug to feel warm, however, a loose fit between the AC outlet and plug may cause overheating and distortion of the plug. Contact a qualified electrician to replace a loose outlet
- After use: Switch off and unplug the appliance from the power outlet when it is not in use and before cleaning, servicing, moving or storing the appliance Grip the plug and remove it from the outlet, do not pull the cord when disconnecting

Usage conditions and restrictions

- Domestic use only: This appliance is intended for indoor household use only. It is not suitable for commercial, industrial or trade use
- Space heating only: Do not use this appliance for anything other than its intended purpose, and only use it as described in this manual. Any other use is not recommended and may cause fire, electric shock or injury ' Protect from moisture: This appliance is not intended for use in bathrooms, laundry areas or similar indoor locations Never locate this appliance where it may fall into a bath tub, shower, or otherwise become exposed to water ; No outdoor use: Do not use this appliance outdoors. on wet surfaces or in the immediate surroundings of a swimming pool ' No clothes drying: Do not use this appliance as a drying rack for clothing
- Ventilation: Only use this heater in a well ventilated area To prevent a possible fire, do not insert or allow objects to enter any ventilation or exhaust openings Do not block air intakes or exhaust openings in any manner
- **WARNING!** No external timer: Never operate the heater on a program switch, external timer switch or any other appliance for automatic operation, as there is a risk of fire if the heater is covered or positioned incorrectly In order to avoid a hazard due to inadvertent resetting of the thermal cut-out, do not connect it to a circuit that is regularly switched on and off by your electricity provider
- Accessories: The use of accessory attachments not recommended by the appliance distributor may result in fire, electric shock or personal injury Usage restriction: This appliance may be used by children aged from 8 years and above, and persons with reduced physical, sensory or mental capabilities, or lack of experience and knowledge, if they have been given supervision or instruction concerning use of the appliance in a safe way, and understand the hazards involved Children should not play with the appliance

Cleaning and user maintenance should not be carried out by children without supervision
Children younger than 3 years should be kept away unless continuously supervised

- Children aged between 3 and 8 years should not plug in, regulate, clean the appliance or perform user maintenance Children in this age group should only switch on/off the appliance, provided that it has been placed in its intended, normal operating position, and they have been given supervision or instruction concerning use of the appliance in a safe way and understand the hazards involved
- **WARNING!** Do not leave unattended during use! Always switch off and unplug when not in use and if left unattended Do not use this heater in small rooms when they are occupied by persons not capable of leaving the room on their own without constant supervision
- Do not touch during use: Do not touch the front grille during use, as it will become very hot Do not insert any objects through the grille into the interior of the appliance
- **CAUTION:** Hot! Some parts of this heater can become very hot when in use. To avoid burns, do not let bare skin touch hot surfaces. Be particularly careful when children and vulnerable persons are present Always let the heater cool down before touching it, even if it is unplugged from the power supply
- **To ensure personal safety, do NOT use this heater:**
 - In front of or immediately below an electrical outlet socket
 - Close to a radiant heat source .
 - On long pile carpet or a flokati rug
 - Behind a door
 - Near a window where it may get splashed with rain
 - Near flammable materials or surfaces (such as furniture, curtains, pillows, bedding, papers, clothes) Keep such materials at least 1m away from the front of the heater and 50cm from the sides and rear of the heater
 - In any areas where petrol, paint or other flammable substances are stored/used, (such as in a garage or workshop), as the heater has hot and arcing parts inside which may spark.
 - In the immediate vicinity of a bath, shower or swimming pool
- **Service:** This heater contains no user-serviceable parts inside Do not attempt to open and repair the heater yourself Other components should only be serviced by a qualified technician
- **Do not open:** All covers are intended to prevent direct access to the heating elements and must be in place when the appliance is in use
- **Malfunction:** In case of malfunction, disconnect the plug immediately and contact your local store for advice

- Storage: To avoid damaging the heater during storage or transport, keep the heater in a dry place, free from excessive vibration
- Improper use: Improper use or installation may result in the risk of fire, electric shock and/or injury We assume no liability for any eventual damages caused by improper use or incorrect handling



Warning

This content is compiled from multiple sources and is provided for reference purposes only. It may not be complete or fully applicable to all situations. If you are unable to resolve your issue, please contact the product manufacturer or an authorized service provider for official support.