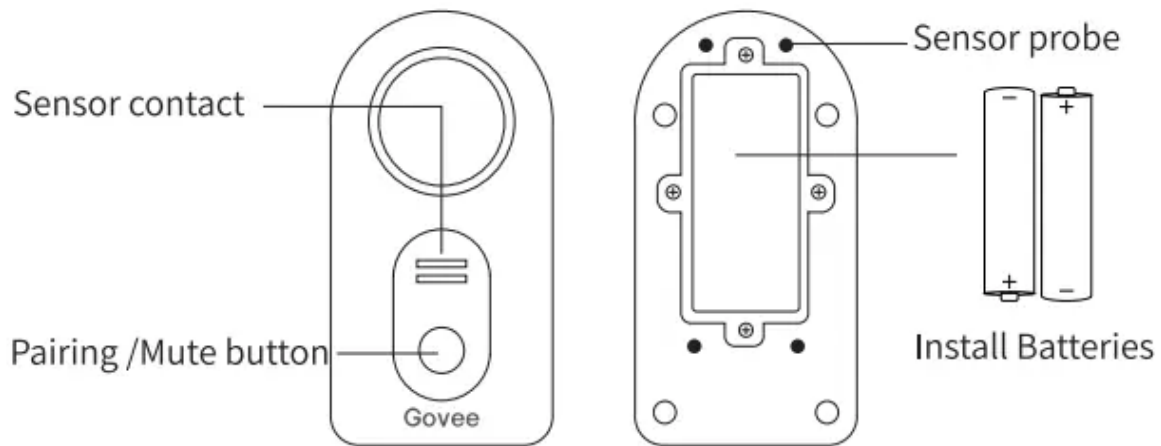


## At a glance



### Water Detector

**Sensor contact** Detecting dripping

**Sensor probe** Detecting water seepage

**Pairing /Mute button** Pairing, testing, pausing alerts

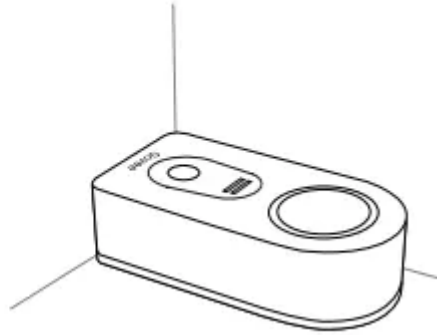
**Install Batteries** AAA battery 2

## Specification

Water Leak Detector	
Voltage	DC 3V
Working distance (in open air)	100m/328ft
Alarm decibel	100dB
Waterproof rating	IP66

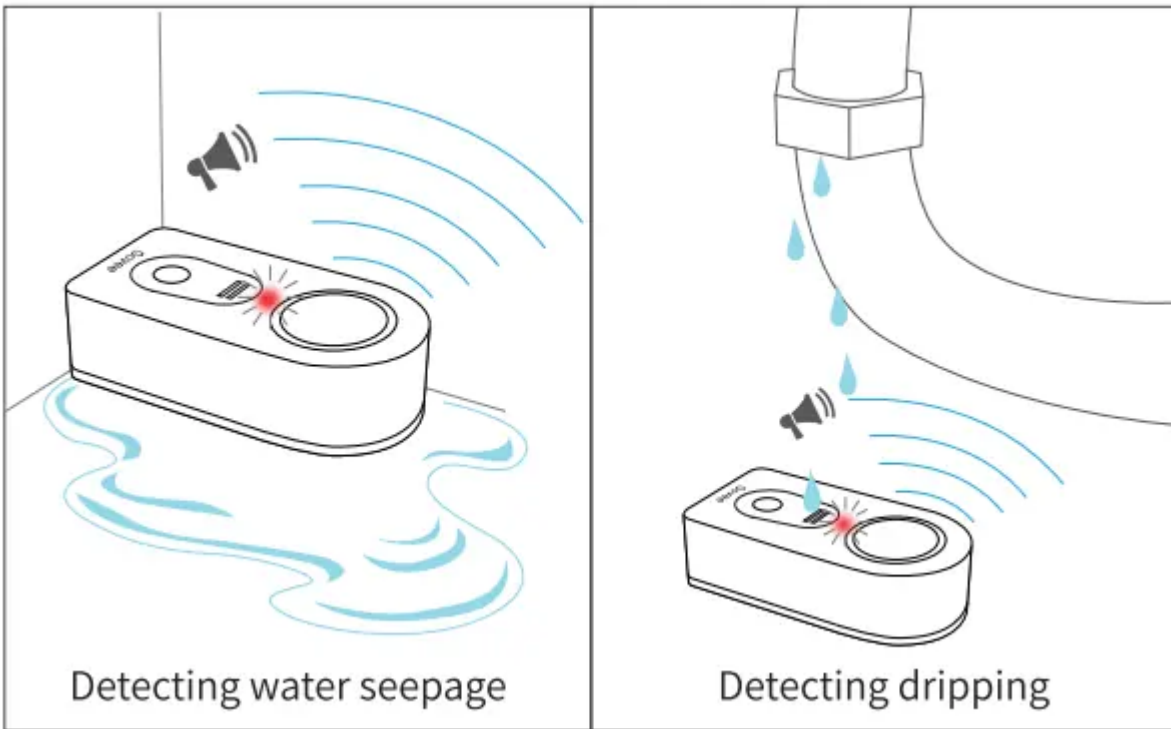
## Installing your Device

- 1.Pull out the battery insulation sheet;
- 2.Placement.



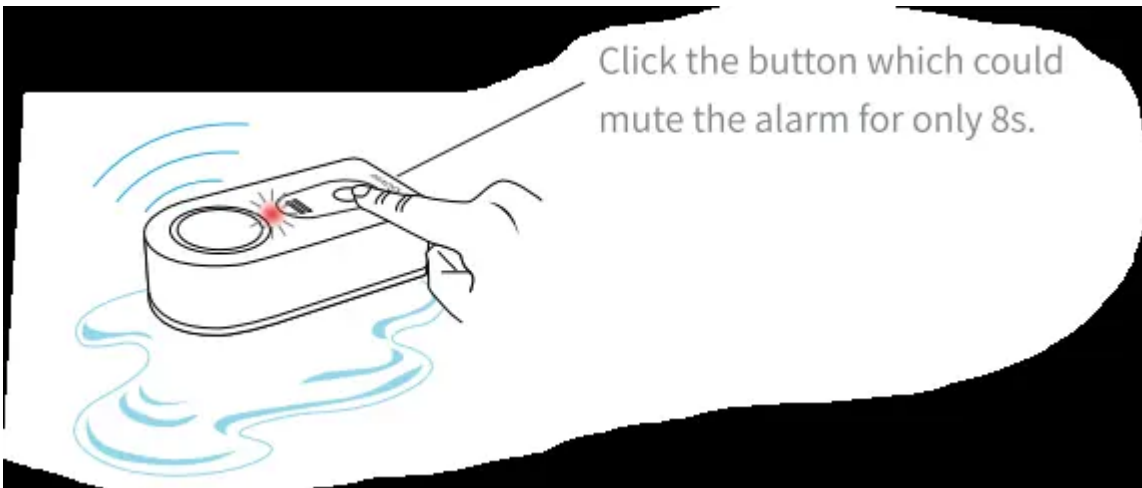
## Using your device

### 1 Detecting dripping



When detecting dripping or seeping water on the ground, the product will emit a 100dB alarm.

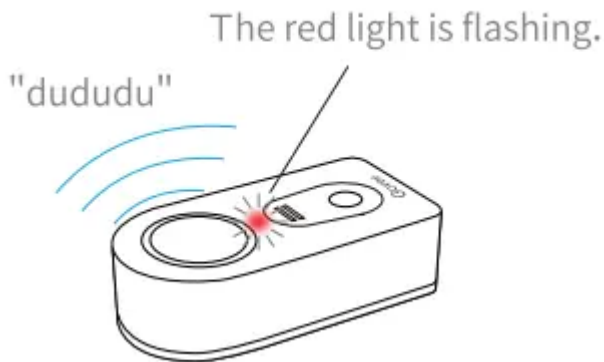
### 2 Removing the alarm



Please dry the sensor first and then the alarm would be removed.

### 3 Low battery alarm

When the power compacity is less than 5%



Please replace the battery in time.

When the power runs out

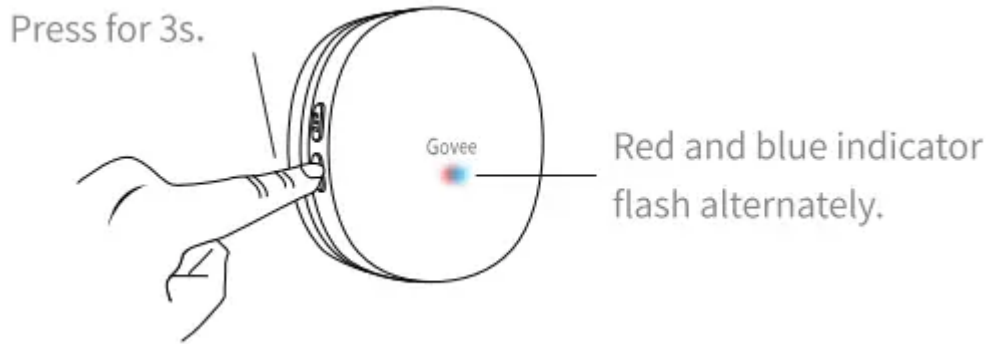
No responses when clicking the button.



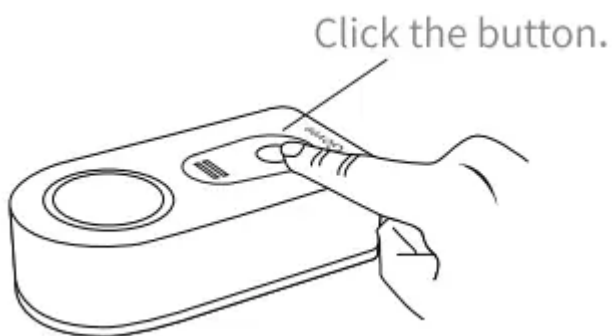
4 If you have purchased extra the Wi-Fi Smart Water Leak Detector, you could add these detectors to the original gateway

### Instructions are as follows:

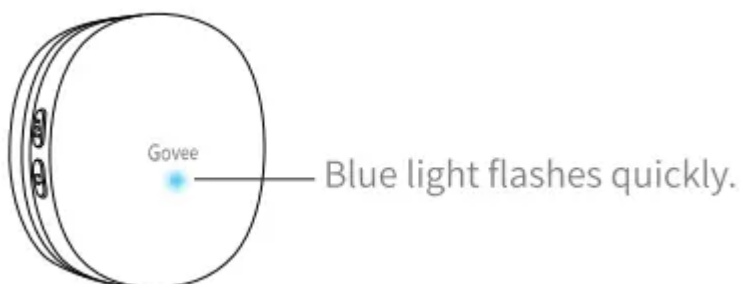
Step1. The gateway will enter into the pairing mode;



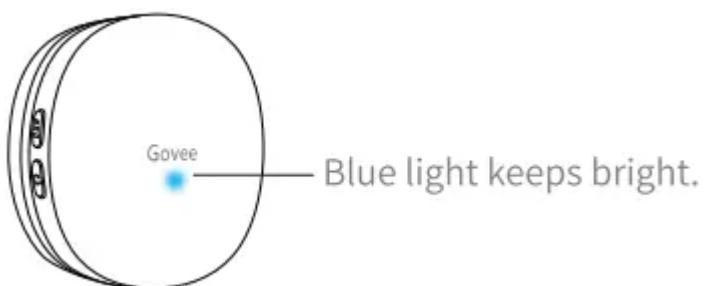
Step2. The sensor sends the pairing signal;



Step3. The gateway received the signal:



Step4. Connection Succeeded.



### Attention

- If you have not paired the gateway and sensor successfully within 30s, the gateway indicator will turn blue automatically and flash quickly, and then exit the pairing mode;
- If the connection fails, please carefully check the above steps and repeat the attempts.

5 When the sensor is paired successfully to the gateway, the app could push alerts remotely and could also provide more intelligent features

## Troubleshooting and Warning

### Troubleshooting

#### The product does not work?

- a. Pull out the insulation sheet before use.
- b. Check the battery capacity.
- c. Make sure that the product is installed correctly.

### Warning

- a. Do not place the device in the water.
- b. Please dry it in time after encountering water.

#### **Warning**

This content is compiled from multiple sources and is provided for reference purposes only. It may not be complete or fully applicable to all situations. If you are unable to resolve your issue, please contact the product manufacturer or an authorized service provider for official support.