

## PARTS AND FEATURES



### 1. Comfort Grip Handle (A)

The handle allows you to control the hand blender with ease.

### 2. Low/Turbo Two-speed Power Button (B)

Allows you to activate the hand blender at the touch of a button. Simply press and hold down the Low or Turbo button to blend or pulse. Once the button is released, blending will stop.

### 3. Main Body Housing (C)

The main body is not dishwasher safe.

#### **4. Detachable Blending Shaft (D)**

Hold the blending shaft with the blades down, and align the top end of the blending shaft with the corresponding end of the main body and push until the blending shaft 'clicks' and locks into the main body. By pressing the release button on the side of the unit, the shaft will detach for easy cleaning.

#### **5. Blade Guard (E)**

The fixed stainless blade is partially covered by a stainless housing that keeps splashing to a minimum. Blades are SHARP. Handle carefully when removing, inserting or cleaning

#### **6. Whisk Attachment (F)**

The whisk attachment snaps into the main body housing. This attachment is great for whipping cream, egg whites and other delectable treats

#### **7. Detachable Whisk Gear (G)**

The whisk attachment attaches to the whisk gear. The whisk gear is not dishwasher safe.

#### **8. Chopping Bowl Cover (H)**

Align the main body with the chopping bowl lid and push down until the main body clicks into place. Ensure the chopping bowl lid is dry with no water remaining before re-attaching. The chopping bowl cover is not dishwasher safe.

#### **9. Chopping Bowl Attachment (I)**

Use the chopping attachment to chop small amounts of food such as cooked meat, cheese, vegetables, herbs, crackers and bread. The chopper bowl attachment is dishwasher safe

#### **10. Reversible Blade (J)**

Place the reversible chopping blade onto the metal pivot pin in the base of the chopping bowl. Blades are SHARP. Handle carefully when removing, inserting or cleaning

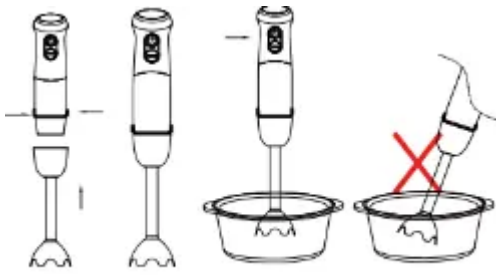
#### **11. Mixing Cup/Beaker (K)**

The 630ml mixing cup/beaker is dishwasher safe. Use this container to blend smoothies, salad dressings and more.

## **ASSEMBLY**

### **BLENDING ATTACHMENT**

1. Align the main body with the blending shaft and push the pieces together until you hear and feel them click together. It may be helpful to press the release button when assembling.
2. Plug the power cord of the hand blender into an electrical outlet.



### CHOPPER/GRINDER ATTACHMENT

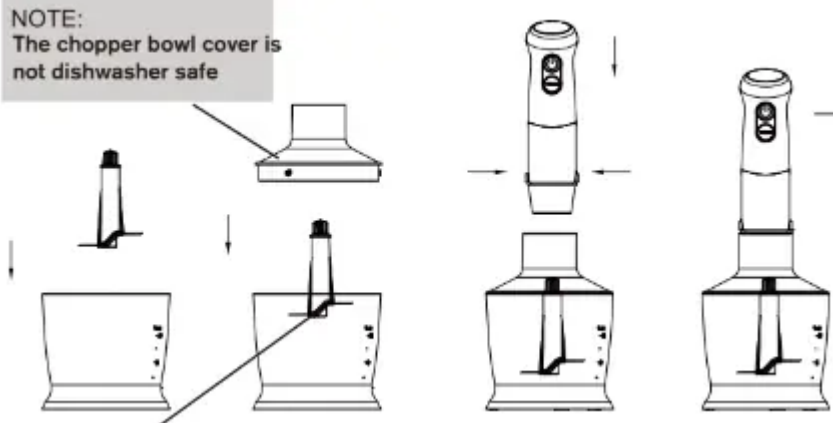
1. Connect the main body to the top of the work bowl cover.
2. Align the food processor cover's drive shaft with the ribbed opening on the underside of the main body.
3. When aligned properly, slide the two pieces together until you feel and hear a slight click.

### CHOPPER/GRINDER ATTACHMENT

**NOTE:** The chopper bowl cover is not dishwasher safe

**NOTE:** Do not lift the blade before the chopping operation has completely finished.

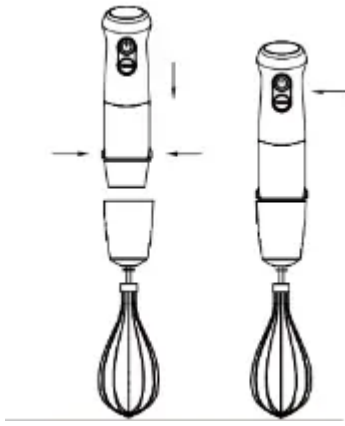
**NOTE:**  
The chopper bowl cover is  
not dishwasher safe



1. Place the chopping/grinding blade into the center of the work bowl over the metal blade shaft.
2. Place the main body housing cover on top of the work bowl and rotate counterclockwise to lock into place.
3. Plug the power cord of the hand blender into an electrical outlet.

### WHISK ATTACHMENT

1. Align the main body with the assembled whisk attachment and push the pieces together until you hear and feel them lock together. It may be helpful to press the release button when assembling.



## REVERSIBLE BLADE ASSEMBLE THE PARTS

1. Place the work bowl on a flat, dry, stable surface. It should be close to an electrical outlet of 110-120V.
2. The metal blade assembly shaft (A) is attached to the bottom of the work bowl. If not already in place, slide the fully assembled blade assembly (B) over the top of the metal blade assembly shaft.



## OPERATION

### BLENDING

The specially designed blade is for mixing and puréeing all kinds of foods, including salad dressings, powdered drink products, soups, sauces and blended drinks like milkshakes.

This blade mixes and stirs while adding only a minimum of air to your mixture. A gentle up-and-down motion is all you need to make the most flavorful, full-bodied recipes. Be careful never to remove the blending shaft from the liquid while in operation, for it will splatter. Tilt the pan or bowl away from you if needed to ensure the protective blade guard on the blending shaft is fully submerged.

1. Put the blending shaft into the mixture to be blended.

2. Press and hold the desired speed button. The hand blender will continue to run as long as the button is pressed in. To turn the hand blender off, release the power button and the motor will stop.
3. Unplug immediately after use. Caution: Do not put fingers near blade. To dislodge food, unplug the hand blender from the outlet first.
4. Do not use in non-stick cookware to avoid scratching.

## **CHOPPING FOOD**

1. Place the work bowl firmly on a flat, sturdy surface like a countertop.
2. Put food in the work bowl. Be sure the food is cut into small pieces to 1 inch), and the bowl is not overloaded.
3. Press and hold the desired speed button.
4. When you have finished processing the food, stop the blender by taking your finger off the desired speed button.
5. WHEN THE BLADE STOPS MOVING, unplug the unit.
6. Remove the main body with the cover from the work bowl.
7. Carefully remove the chopping blade. NEVER TOUCH THE BLADE ITSELF.
8. Remove food with a spatula.
9. Do not use the chopping bowl or the beaker in a microwave oven.

## **WHISKING**

1. Insert the whisk attachment into the main body.
2. Plug the electrical cord into a wall socket.
3. Put the whisk into the mixture that is to be blended.
4. Press and hold the desired speed button. The hand blender will continue to run as long as the switch is pressed. To turn the hand blender off, release the power button and the motor will stop.

## **CLEANING AND MAINTENANCE**

### **HAND BLENDER**

Always clean the main body and blending shaft thoroughly after using. Remove the blending shaft from the main body. Clean the main body only with a sponge or damp cloth. Do not use abrasive cleaners that could scratch the surface. To clean the blending shaft, wash by hand in hot water using mild detergent. Be mindful of the fixed razor-sharp edges.

### **CHOPPER/GRINDER ATTACHMENT**

To simplify cleaning, rinse the work bowl, blade and cover immediately after use so that food won't dry on them. Do not submerge the work bowl cover in water or put in the dishwasher. Wash the chopping blade and work bowl in warm, soapy water. Rinse dry. Wipe the underside of the cover with a sponge or damp cloth to remove any food. Wash the blade carefully. Avoid leaving it in soapy water where it may remain unseen.

You can wash the work bowl and chopping blade, on the upper shelf of your dishwasher. Unload the dishwasher carefully to avoid contact with the sharp blade. Wipe the motor body and top of the cover with a damp sponge or cloth. Dry it immediately. Never submerge the motor body or the cover in water or other liquids. The food processor attachment is intended for HOUSEHOLD USE ONLY.

## **WHISK ATTACHMENT**

To clean your whisk attachment, simply release the attachment from the motor body housing. Once the whisk is removed, detach the metal whisk from the gear by pulling the two pieces apart. To clean the gear, simply wipe with a damp cloth. To clean the metal whisk, wash with warm soapy water or put into the dishwasher. Do not submerge the gearbox in water or any other liquid.

## **TIPS AND HINTS**

### **FOR HAND BLENDER**

- Be sure that the blending blade guard is fully submerged before blending ingredients.
- To purée a soup, use the hand blender to blend the soup ingredients to the desired consistency, using a gentle up-and-down motion directly in the saucepan or pot.
- When blending ingredients directly in a pot or pan, tilt the pan away from you to create a deeper area for blending to prevent splatter.
- Do not use in non-stick cookware, be careful not to scratch the coating with the hand blender.
- When blending into the blending cup, for example when making a fruit smoothie, cut most solid foods into ½ inch pieces for easy blending.
- Use the hand blender to make smooth gravies and pan sauces.
- Do not immerse the main body of the blender in water or any other liquid.
- When blending in the mixing cup, pour liquid ingredients in first, unless recipe instructs otherwise.
- Do not attempt to blend ice cubes, bones, coffee beans or other hard materials, as these are liable to damage the blades

**Note:** The Hand Blender is equipped with overload protection function from high operating temperatures. Should the Hand Blender suddenly stop during use, unplug it and allow 5-10 minutes to automatically reset.

- To avoid splashing, insert the hand blender into the mixture before pressing the power button, and release the power button before pulling the hand blender out of the mixture.
- Do not overfill the mixing containers. The level of the mixture will rise when blending and can overflow.
- To whip air into a mixture, always hold the blade just under the surface.
- Using a gentle up-and-down motion is the best way to blend and incorporate ingredients uniformly.
- Liquid should not come closer than 1-inch of where the shaft attaches to the main body.

#### **FOR WHISK ATTACHMENT**

- Do not immerse whisk attachment gear in water or any other liquid.
- Use the whisk attachment for beating heavy cream or egg whites.
- When beating egg whites use a very clean metal or glass bowl, never plastic. Plastic can contain hidden oils and fats that can ruin the delicate egg white foam. To help stabilize the egg whites, add 1/8 teaspoon of cream of tartar per egg white prior to beating them. (If using a copper bowl omit the cream of tartar) Beat the egg whites until desired peaks form.
- It may also be used for any task that you would normally whisk by hand, like crêpe batters or eggs for omelets.
- Beating the egg whites too long causes them to dry out and become less stable.
- When adding sugar to beaten egg whites, add it slowly when soft peaks just begin to form and then continue beating to form desired peaks.
- When beating heavy cream, if possible and time allows, use a chilled bowl and chill the whisk attachment. The best shaped bowl for whipping cream is one that is deep with a rounded bottom to minimize any splatter.
- The cream should come out of the refrigerator just before whipping.
- Whipped cream may be used at either soft or firm peaks depending on preference. It may be flavored as desired. For best results, whip cream just before using.

#### **FOR FOOD CHOPPER/GRINDER ATTACHMENT**

- When making compound butters, remove the butter from the refrigerator and let it come to room temperature before blending the ingredients.
- Do not use the chopping bowl or the beaker in a microwave oven. Chopping
- Some spices may scratch the work bowl.

- Liquids in the work bowl should not exceed 1½ cups.
- Do not overload the work bowl. For best results most foods should not reach more than 2/3 of the way up the work bowl.
- Do not attempt to chop Ice cubes, bones, coffee beans or other hard materials, as these are liable to damage the blades.
- Do not immerse the food processor cover in water or any other liquid.
- Do not operate chopper/grinder attachment for more than 30 seconds continuously.
- The size of pieces you put in the bowl should be about the same size to achieve even results.
- For raw ingredients: peel, core and/or remove seeds and pits. Food should be between ½ and 1-inch, depending on hardness of the food.
- Pulse food in 1-second increments to chop. For the finest chop, process continuously. Watch ingredients closely to achieve desired consistency and scrape the work bowl as necessary.

### **Warning**

This content is compiled from multiple sources and is provided for reference purposes only. It may not be complete or fully applicable to all situations. If you are unable to resolve your issue, please contact the product manufacturer or an authorized service provider for official support.