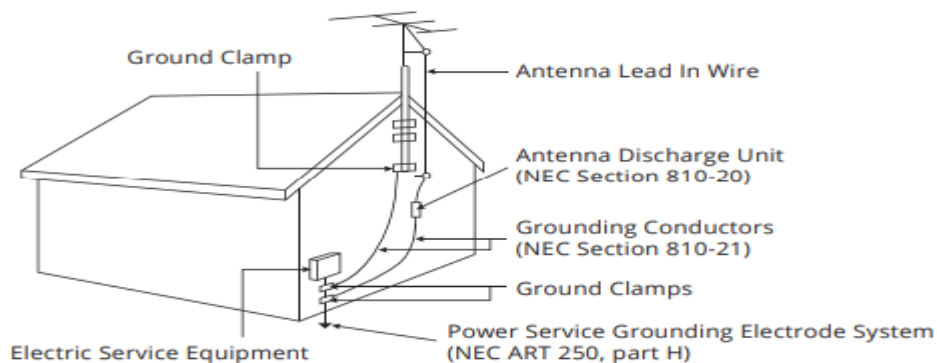


## TV Antenna Connection Protection



- If an outside antenna/satellite dish or cable system is to be connected to the TV, make sure that the antenna or cable system is electrically grounded to provide some protection against voltage surges and static charges.
- Article 810 of the National Electrical Code, ANSI/NFPA 70, provides information with regard to proper grounding of the mast and supporting structure, grounding of the lead-in wire to an antenna discharge unit, size of the grounding conductors, location of antenna discharge unit, connection to grounding electrodes, and requirements of the grounding electrode.
- Lightning Protection: For added protection of the TV during a lightning storm or when it is left unattended or unused for long periods of time, unplug the TV from the wall outlet and disconnect the antenna or cable system.
- Power Lines: Do not locate the antenna near overhead light or power circuits, or where it could fall into such power lines or circuits. Remember, the screen of the coaxial cable is intended to be connected to earth in the building installation.

## Remote Control



1. Power - Turn TV on or Off.
2. Input - Change the currently displayed input.
3. Exit - Close the on-screen menu.
4. Menu - Display the on-screen menu.
5. Arrows - Navigate the on-screen menu.
6. OK / Enter - Select the highlighted option / Confirm channel or passcode entered using the number pad.
7. Back - Go to the previous on-screen menu.
8. Guide - Display the info window.
9. Volume Up/Down - Increase or decrease the loudness of the audio.
10. V Button - Displays the multimedia menu.
11. Channel Up/Down - Change the channel.
12. Mute - Turn the audio on or off.
13. Last - Return to the last viewed channel.
14. Number Pad - Manually enter a channel.
15. Wide - Change the display mode.
16. Dash - Use with number pad to manually enter a digital sub-channel. (e.g. 18-4 or 18-5)

### Inserting and replacing batteries.

Two AAA batteries are included for you to use with the basic remote control.

To insert/replace the batteries:



1. Press on the VIZIO Logo and slide the battery cover off.
2. Insert two AAA batteries (included). Be sure to align the + and - signs on the batteries and remote.
3. Replace the battery cover.

## Installing the TV Stands

1. Your TV includes a stand designed to support the weight of the TV and keep it from falling over. However, the TV can still fall over if:



- It is placed on an uneven, unstable, or nonlevel surface.
- It is pushed, pulled, or otherwise improperly moved.
- If an earthquake occurs and the TV is not properly secured.

Remove any plastic wrapping from the TV and stands.

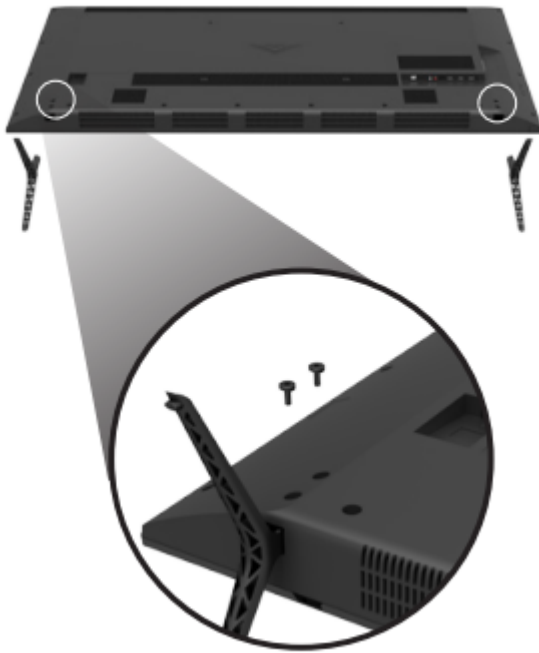
Place the TV screen-down on a clean, flat surface. To prevent scratches or damage to the screen, place the TV on a soft surface such as a carpet, rug, or blanket, and avoid any sharp edges.

2.

Insert the stands into the base of the TV.

Secure each stand to the TV by inserting and tightening the two (2) included Phillips screws.

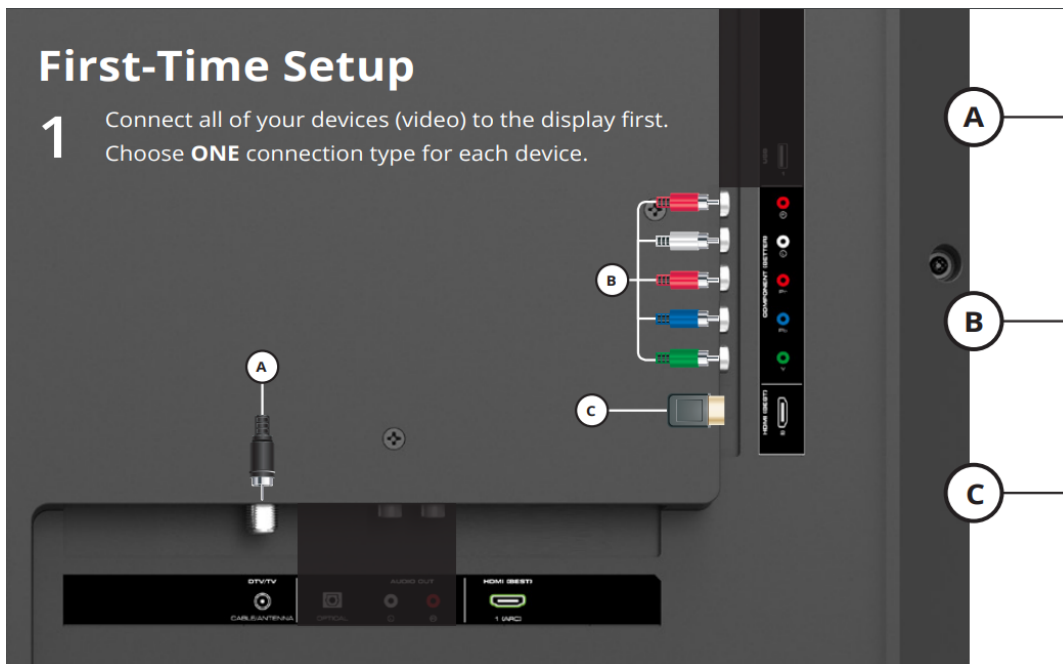
When you are finished, place the TV on a stable, level surface.

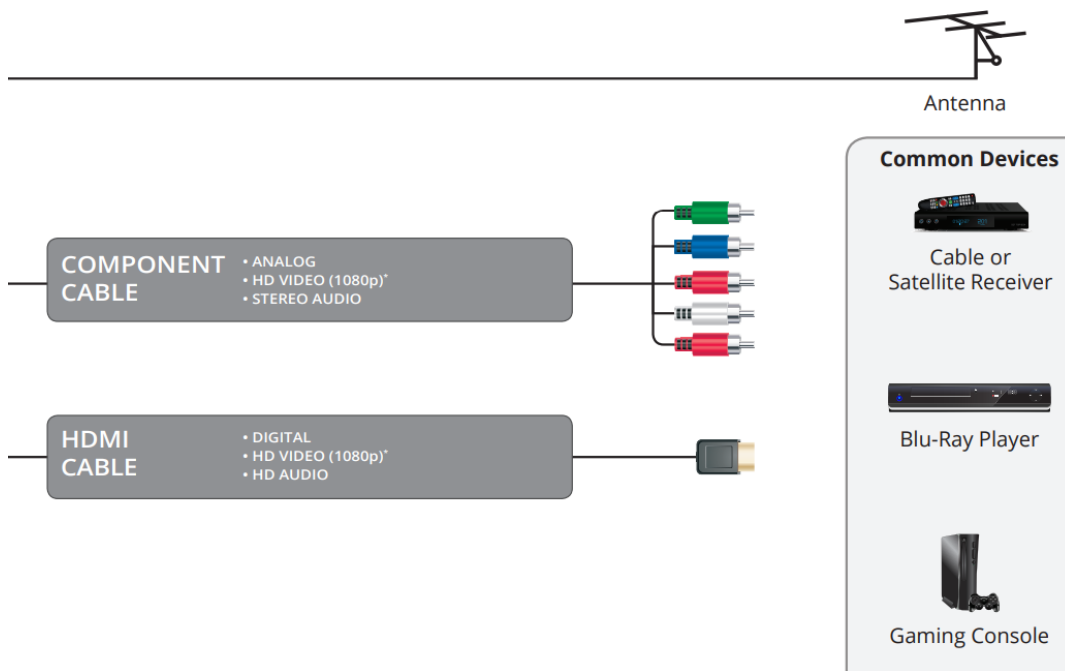


To ensure proper ventilation, leave at least 1" of space between the back of the TV and any other objects, like walls.

## First-Time Setup

1. Connect all of your devices (video) to the display first. Choose ONE connection type for each device.

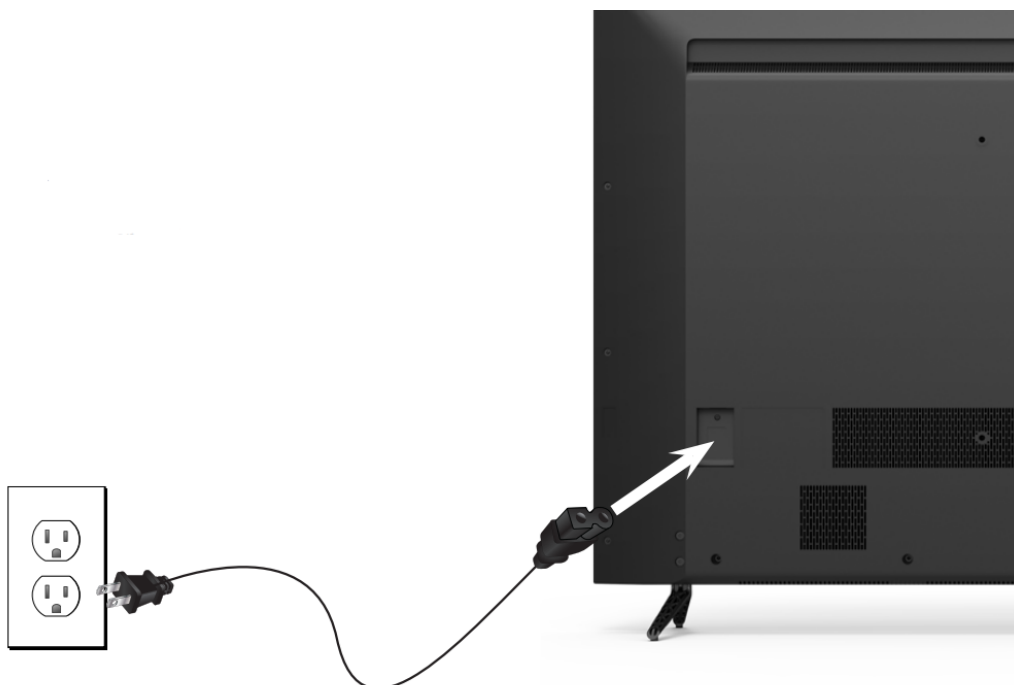




2.

Connect one end of the power cable to the back of the display. The flat edge of the connector faces the outer edge of the display.

Plug the other end of the power cord into an electrical outlet. The display powers on automatically.



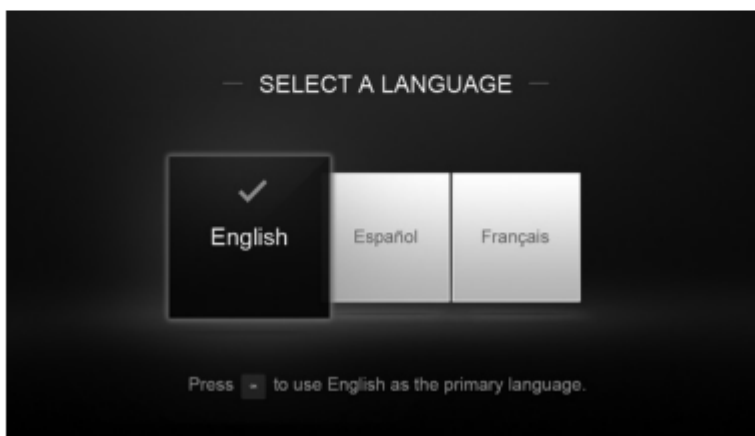
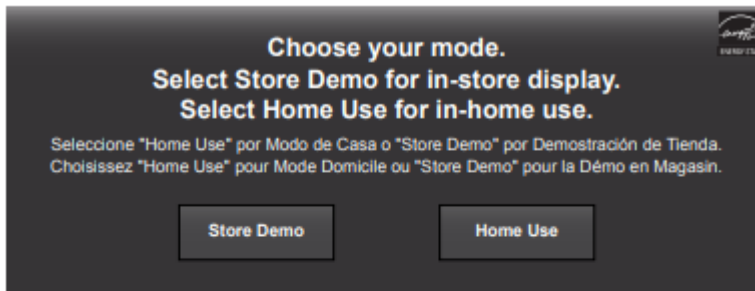
3.

Turn the TV on by pressing the Power button on the remote. The Setup App is displayed.



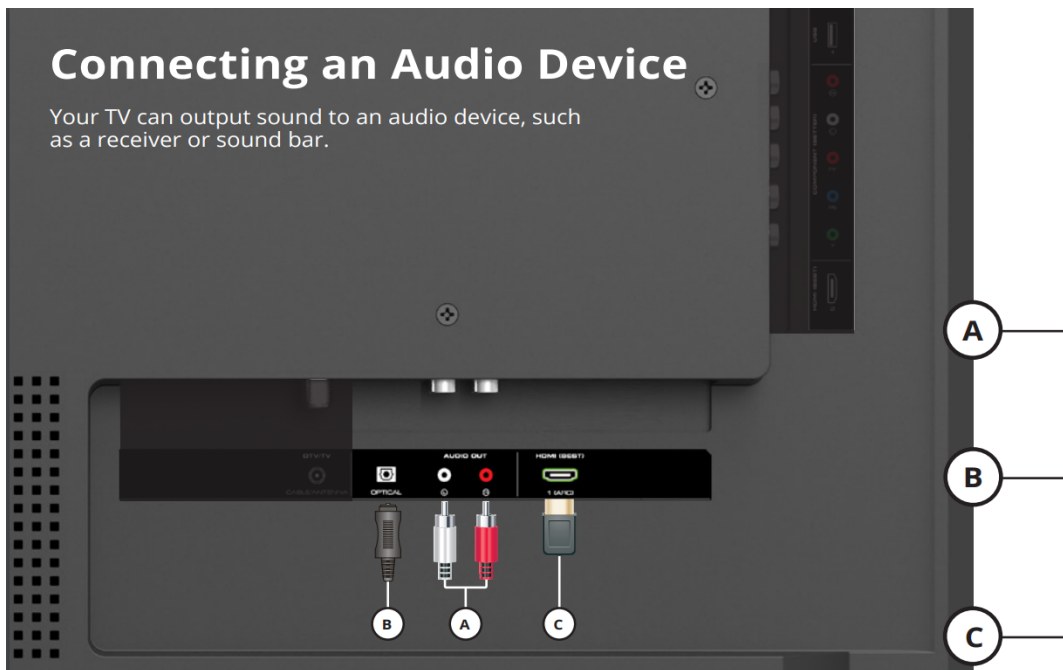
Use the Arrow buttons on the remote to select the Home Use and press OK.

Follow the on-screen instructions to complete the first-time setup



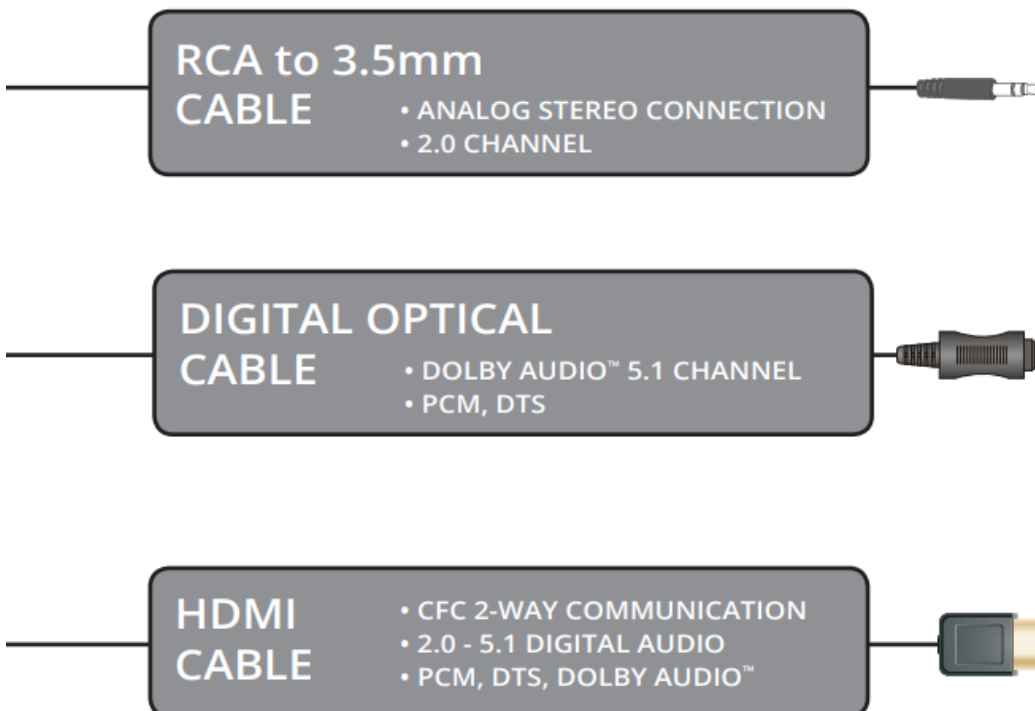
## Connecting an Audio Device

Your TV can output sound to an audio device, such as a receiver or sound bar.



### To connect your TV to an audio device:

1. Verify that your device has a video port that matches an available port on the TV (HDMI, RCA, Optical, etc.)
2. Turn the TV and your audio device off.
3. Connect the appropriate cable (not included) to the TV and the device.
4. Turn the TV and your device on.





Sound bar system



Audio Receiver

## Wall-Mounting the TV

To mount your TV on a wall, you will need a wall mount. Consult the information on this page to find the appropriate mount for your TV.

Installing a TV on a wall requires lifting. To prevent injury or damage to the TV, ask someone to help you.

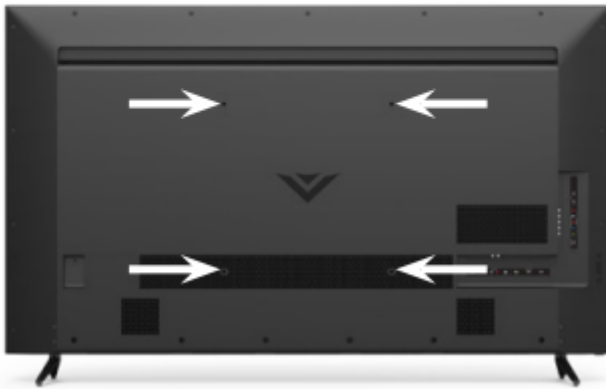
Be sure the mount you choose is capable of supporting the weight of the TV. After you have determined that you have the correct mount for your TV, you can begin the installation.

To install your TV on a wall:

1. Disconnect any cables connected to your TV.
2. Place the TV face-down on a clean, flat, stable surface. Be sure the surface is clear of debris that can scratch or damage the TV.
3. Remove the stands by loosening and removing the screws.

4. Attach your TV and wall mount to the wall, carefully following the instructions that came with your mount. Use only with a UL-listed wall mount bracket rated for the weight/load of this TV.

	D40n-E3	D60n-E3
Screw Size:	M6	M6
Hole Pattern:	200 mm (V) x 200 mm (H)	400 mm (V) x 400 mm (H)
Weight w/o Stand:	18.02 lbs 8.17 kg	43.21 lbs 19.60 kg



Wall-mount screw locations.

## Troubleshooting

1. How do I return to the Setup App?
  - The on-screen menu has guided setup. Press MENU, then select Guided Setup. Select the type of setup you need and press OK. The Setup App will begin.
  - To reset the TV to factory defaults, press MENU > System > Reset & Admin > Reset TV to Factory Defaults. If you have changed the default Parental Control Passcode, enter it now. Select Reset. Remember that all of your settings will be lost.
2. There is a picture, but there is no sound.
  - Press the VOLUME UP button on the remote. The TV will turn on.
  - Press the MUTE button on the remote to ensure that mute is off.
  - Press MENU > Audio. The TV Speakers should be set to On.
  - If you have an audio device connected to your TV, press MENU > Audio and set Volume Control to External. Use your audio device's remote to control the volume.
3. The TV displays 'No Signal'.
  - Be sure your connected devices are turned on.

- Press the INPUT button on the remote and select the input to which your device is connected to. (e.g HDMI-1, HDMI-2, COMP, etc.)
4. There are black/gray bars on the top/bottom/sides of the screen.
- Some TV channels add black bars to the picture, this is normal.
  - Set the TV to Wide or Zoom mode. Press the WIDE button, highlight Wide or Zoom, and press OK.
  - Adjust the video settings of your external device. See your device's user manual for more information.

### **Warning**

This content is compiled from multiple sources and is provided for reference purposes only. It may not be complete or fully applicable to all situations. If you are unable to resolve your issue, please contact the product manufacturer or an authorized service provider for official support.