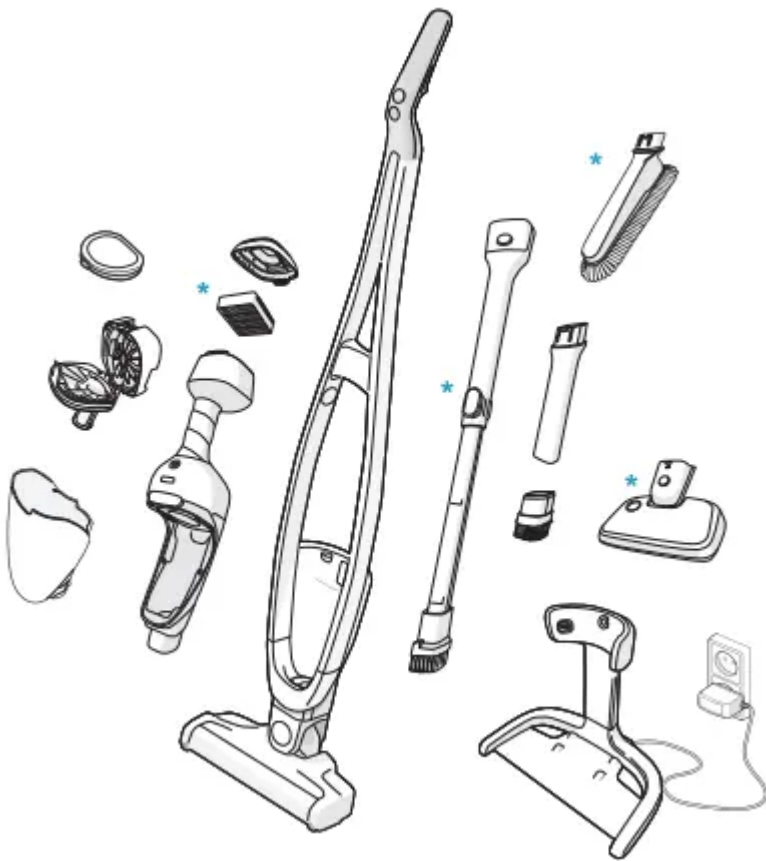


# User manual Vacuum Cleaner



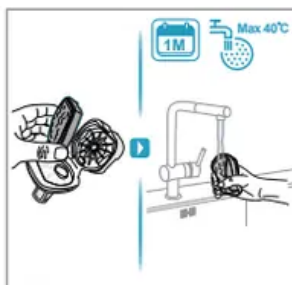
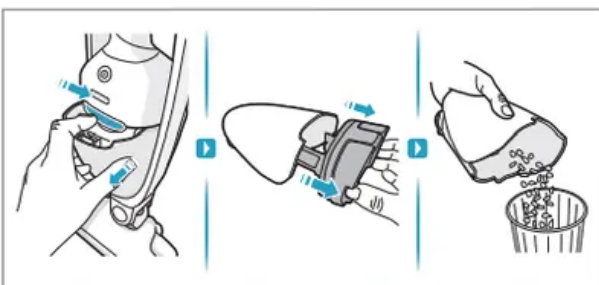
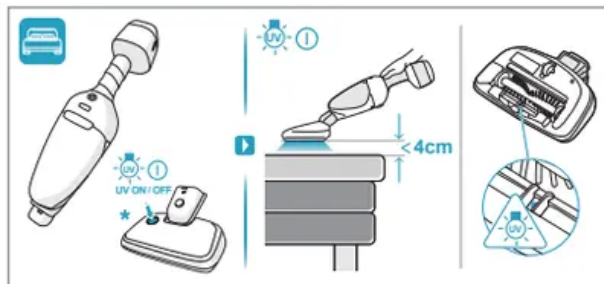
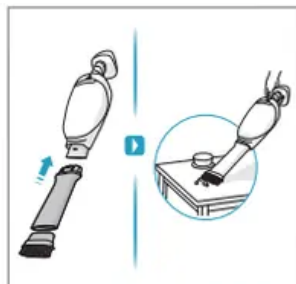
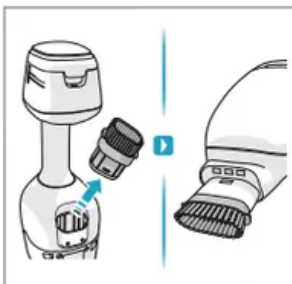
4h

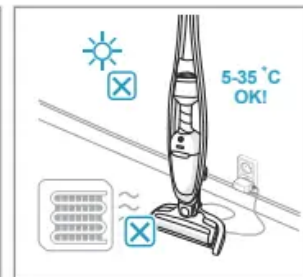
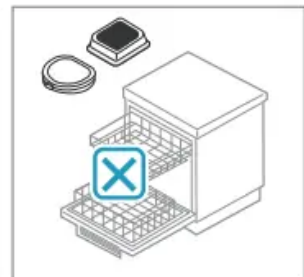
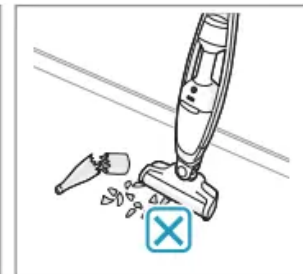
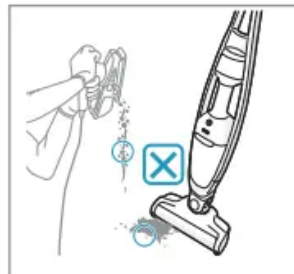
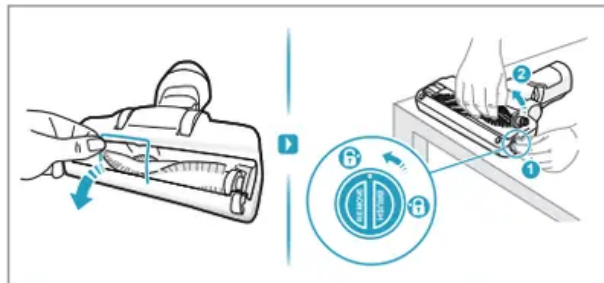
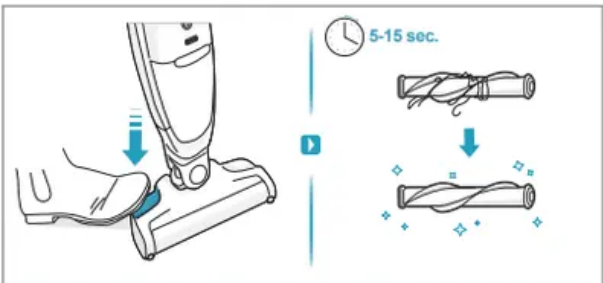
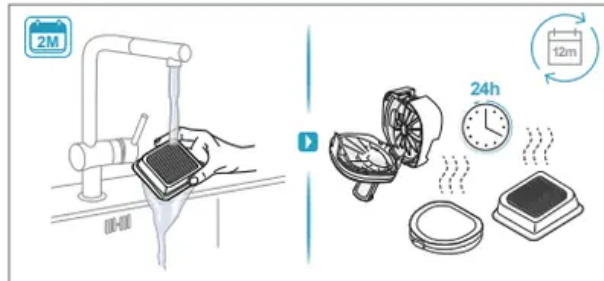
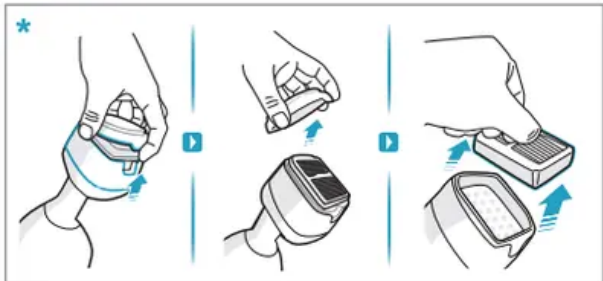
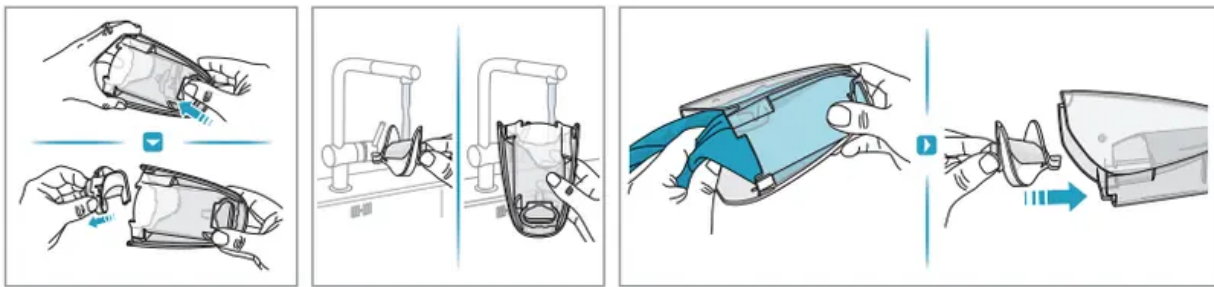
- 100%
- 75-100%
- 50-75%
- 25-50%
- 0%

Light bulb icon x2

ON/OFF

25.2 Volt	15 min	25 min	55 min
21.6 Volt	14 min	23 min	50 min





## Features

Cyclonic Action, Double Filtration

Cyclonic airflow action, with mesh and micro filtration.

## Crevice Tool

This flexible tool with the detachable brush head enables you to reach into corners and narrow spaces

Aluminum frame

Up to 53 minute run-time on low setting

## Benefits

### Multiple floors, less time

The versatile multi-floor nozzle means this vacuum is equally comfortable on carpet, wood, tiles, skirting and more, meaning you won't have to fumble with switching nozzles between zones in your home.

### Well spotted

The powerful 7 LED headlights help detect dirt in those hard-to-reach or dimly lit places, like cupboard corners and under beds and couches, so you won't discover you've missed a spot again.

### Get a grip. Then keep it.

You'll hand it to this comfortable ergonomic grip. The intuitive design safely positions your hands and wrists so they won't fatigue, plus, the one-touch on-switch means no constant holding required.

### Stand by me

You can park the PQ91 anywhere, thanks to its self-standing sleek design, which makes it easy to use, control, pause mid-clean and store away

### Superior run-time

Whether a weekly sweep, or an intense deep clean, you can rely on the 53 minute run-time\*. With the powerful 25.2V battery, three power settings and intuitive memory function, your household chores will be over, quicker. \*Run time based on low power setting.

### Nothing untouched

Now you really can keep every inch of your house squeaky clean. The ultra-responsive full-tilt design matched with the slim frame, makes for easy cleaning of traditionally hard-to-get places like stairs, corners and under furniture as low as 140mm.

### Low noise, no fuss

More white noise than roar, the handheld unit offers high performance at a lower volume than traditional vacuums. Featuring a smooth airflow design and muted exhaust, you can use it any time of the day or night, without disturbing your household.

### Start to finish high performance

Never lose suction again. The supercharged cyclonic system that separates dirt from air, guarantees a consistent clean from start to finish even as the dustbin fills up.

### Glide and go

Manage unexpected messes on multiple surfaces with this reliable charging design. For a hassle-free clean every time, just grab from the easy glide magnetic cordless charge station and go.

## Specifications

### MAIN

Brand	Electrolux
Product Type	Hand held
PNC	900943272
EAN/UPC	7332543736836
Model/Part number	PQ91-3EB
Replaces model	None
Description	Pure Q9 - Cordless Vacuum
Bag/Bagless	Bagless
Warranty Period	2 years

### DESIGN

Main colour	Indigo Blue
Base colour	Aluminium anodized
Accent colour	Sienna Copper

## CONTROLS

Electronics	Auto & +/- Hand operated
Auto & +/- Hand operated	Handle
Filter indicator	No

## TECHNICAL SPECIFICATIONS

Volt (V)	25.2
Battery cell, type	Li-ION
Power brush	No

## CONTROLS

Standby lamp	Yes
--------------	-----

## ACCESSORIES / NOZZLE

Accessories	Yes
Small brush	Yes
Crevice tool	Yes

## PACKAGING & LOGISTICS

SINGLE PACKAGE	
Gross weight (kg)	5.49

## OUTER CARTON

Units in outer	1
Gross weight (kg)	5.99
Package width (mm)	245
Package depth (mm)	173
Package height (mm)	1063
Palette, units per	41
Max units in 20 ft cont.	643
Max units in 40 ft cont.	1311
Max units in 20 HC ft cont.	1454

## Frequently Asked Questions

### How do I remove dust and hair from the vacuum cleaner brush head?

- Removing dust and hair from the vacuum cleaner brush head has be done manually. If this does not go as desired, it's possible to use a fine comb to remove the remaining dirt.

### What is HEPA?

- HEPA stands for High-Efficiency Particulate Air. Many vacuum cleaners have a HEPA filter. A HEPA filter will stop at least 85% and at most 99,999995% of all particles of 0,3 micrometer ( $\mu\text{m}$ ) and up.

### The power cord of my vacuum cleaner does not rewind back into the device, what can I do?

- It is possible that there is a twist or fold in the cord. Completely roll out the cord a few times and rewind it back into the device under guidance of your hands. If this does not solve the problem, it is possible the mechanism to rewind the cord is broken. In that case, contact the manufacturer or a repair service.

### Can I use a paper dust bag more than once?

- This is not advisable. The pores of the bag wat will get saturated, causing a loss in suction and possibly damaging the motor.

### The hose of my vacuum cleaner is clogged, what can I do?

- Detach the hose and look through it to determine if it is actually clogged. If this is the case, you can take a long object such as a broomstick and carefully push it through the

hose. This will generally remove any objects that are clogging the hose. If this didn't help you should contact the manufacturer.

### **My vacuum cleaner makes a whistling noise, what can I do?**

- This problem is often caused by a full dustbag or filter or when there is an opening that allows air into the hose. Check the dust bag and filter and replace them if necessary. Check the hose for any holes or bad connections. If this does not solve the problem, contact the manufacturer.

### **What sizes dust bag are there?**

- There are two sizes that need to be considered. First is the size of the plate with the bag entrance. This determines whether the dust bag will fit a certain vacuum cleaner. Then there's the size of the bag. This is mostly indicated in liters and determines how much dust the bag can hold.

### **Can I use a regular vacuum cleaner to suck up ash?**

- No, this is absolutely not possible. Ash that seems cooled may still be warm or even hot inside. A regular vacuum cleaner is not designed for this and it can cause a fire. Also, the filters of regular vacuum cleaners are not always suited for retaining extremely small particles such as ash. It can then reach the motor of the vacuum cleaner and cause damage.

### **What setting on the vacuum cleaner brush head should I use?**

- Nearly all vacuum cleaners have a head with an adjustable brush. Use the brush for hard surfaces to prevent scratches and damage. Turn off the brush for carpeting and rugs.

## **Safety Precautions**

This appliance is not intended for use by persons (including children) with reduced physical, sensory or mental capabilities, or lack of experience and knowledge, unless they have been given supervision or instruction concerning use of the appliance by a person responsible for their safety. Children should be supervised to ensure that they do not play with the appliance.

Cleaning and maintenance shall not be made by children without supervision. Batteries must be removed from the appliance before it is scrapped.

The battery is to be disposed of safely. Only use the charging adapter that was provided with the product. The product should only be used for normal vacuuming indoors and in a domestic environment. Make sure it is stored indoors and in a dry place.

### **Never use the vacuum cleaner:**

- In wet areas.
- Close to flammable gases, etc.

- When the product shows visible signs of damage.
- On sharp objects or fluids.
- On hot or cold cinders, lighted cigarette butts, etc.
- On fine dust. for instance from plaster, concrete, flour, hot or cold ashes.
- Do not leave the vacuum cleaner in direct sunlight.
- Never use the vacuum cleaner without its filters.
- Do not try to touch the brush roll while the cleaner is switched on and the brush roll is turning.
- When the wheels are blocked.

**Warning:** Do not try to touch the brush roll while the cleaner is switched on and the brush roll is turning.

Mind your fingers if cleaning the inside of the floor nozzle. The metal blade of the BRUSHROLLCLEAN function is sharp and could cause injury.

Avoid exposing the vacuum cleaner to strong heat or freezing temperatures:

To protect the motor, battery and electronics the product should not be operated in: an ambient temperature below 5 °C or exceeding 35 °C. A humidity level below 20% or exceeding 80% (noncondensing).

Storage considerations to protect the battery and electronics; If the product is temporarily stored in a temperature below 5 °C or exceeding 35 °C. let the product cool down or warm up and dry for a few hours before usage. Dew condensation may form inside the product if the unit is moved from a cold to a warm environment.

The battery cells within must not be dismantled, short circuited or placed against a metal surface.

Using the vacuum cleaner in the above circumstances may cause serious personal injury or damage to the product. Such injury or damage is not covered by the warranty.

All service or repairs must be carried out by an authorized service centre.

This warranty does not cover reduction in battery runtime due to battery age or use. as the life of the battery depends upon the nature of use.

### **Warning**

This content is compiled from multiple sources and is provided for reference purposes only. It may not be complete or fully applicable to all situations. If you are unable to resolve your issue, please contact the product manufacturer or an authorized service provider for official support.