

## Check the Packing List



- |                |                     |                          |
|----------------|---------------------|--------------------------|
| 1. Printer     | 2. Power Cord       | 3.USB Cable              |
| 4. RS232 Cable | 5. Power Adapter    | 6.Wire Arrangement Cover |
| 7. User Manual | 8. Paper Roll Guide | 9.Thermal Paper          |
| 10.Roller      |                     |                          |

## Paper Loading

1. Switch the cover opening button and then open the cover.
- 2.Insert a roll of paper in the direction shown in the illustration.



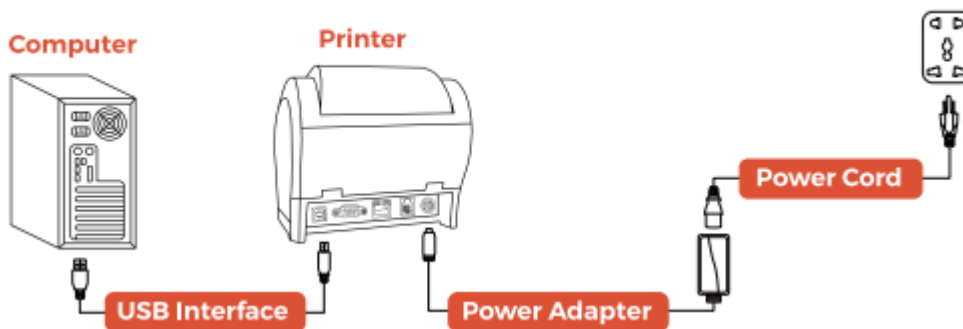
3. Pull the end of the paper out straight, and push down the printer cover to close

# Initial Setup

## Set Up The ITPP068 for First Use on Windows

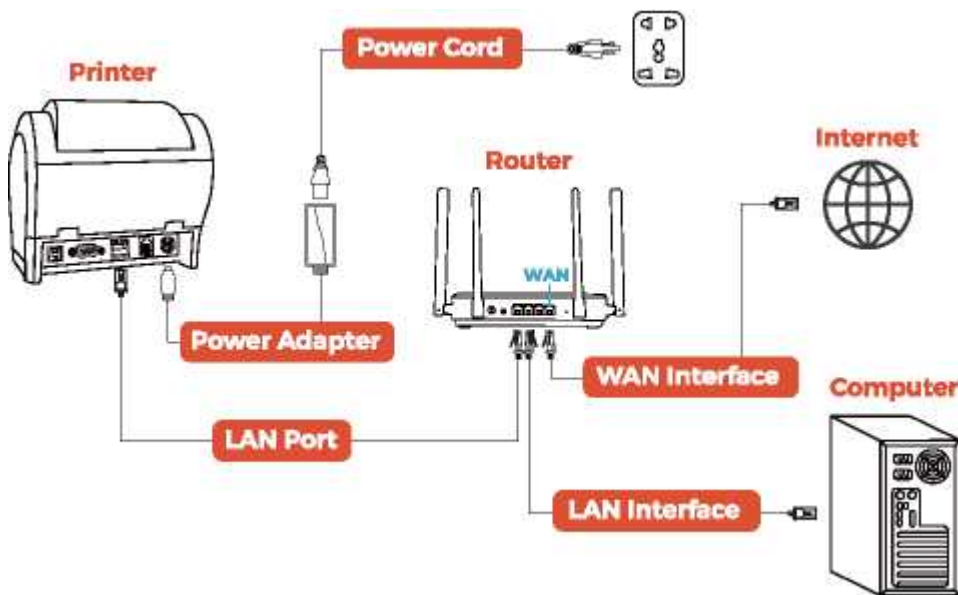
### USB Interface

- 1) Connect the printer to the power outlet via the power cord.
- 2) Connect the printer to your Windows computer via USB.
- 3) Take the thermal paper into the printer and power it on.



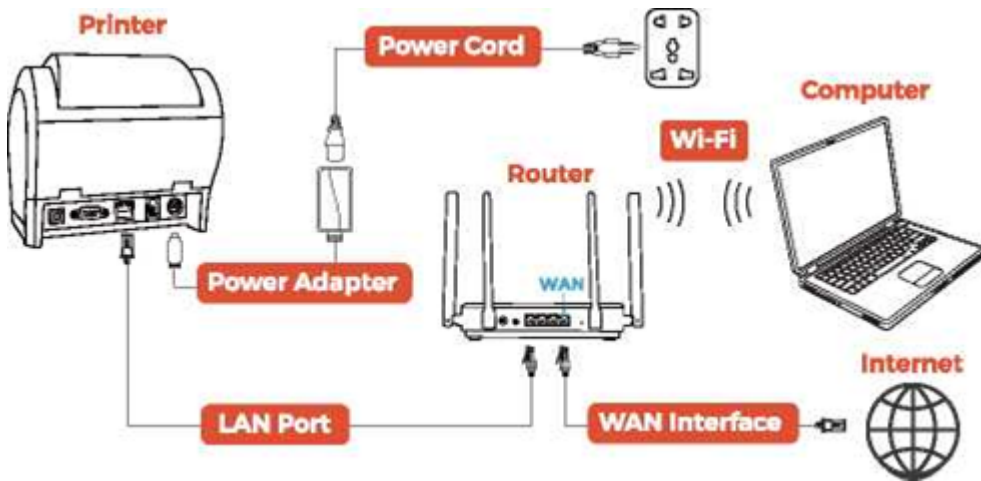
### LAN Interface

- 1) Connect the printer to the router with a network cable.



Open the downloaded setting tool and install it, then follow the demo video to configure the LAN.

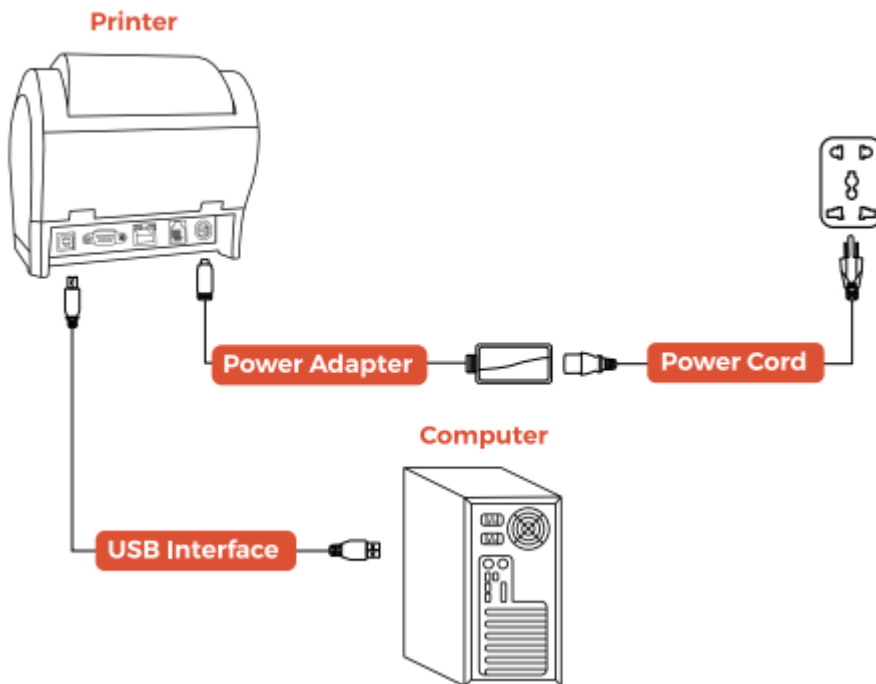
- 2) Connect the printer to the router with a network cable. Please see the picture below.



## Set Up The ITPP068 for First Use on MacBook

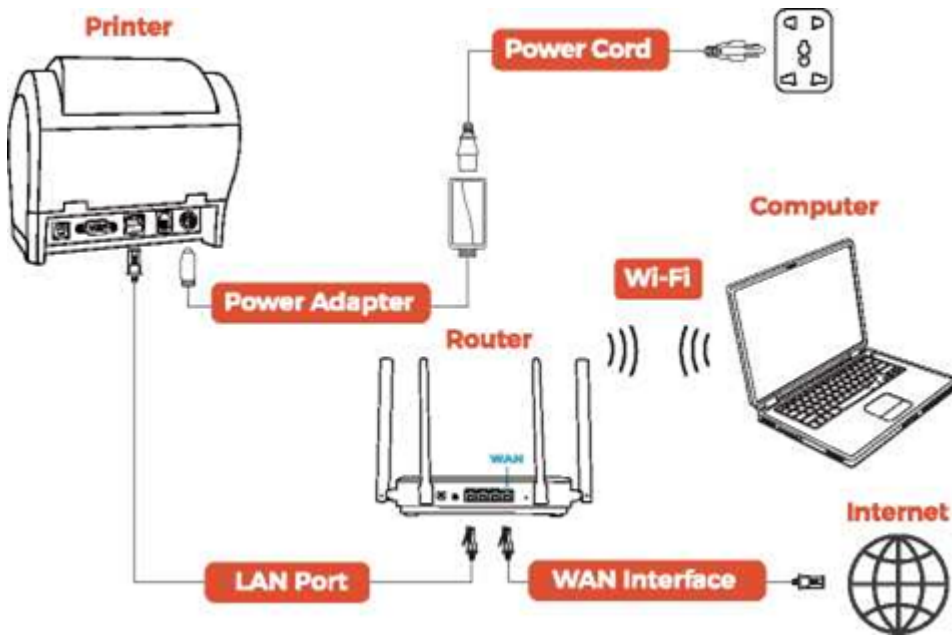
### USB Interface

- 1) Connect the printer to the power outlet via the power cord.
- 2) Connect the printer to your Windows computer via USB.
- 3) Place the thermal paper into the printer and power it on.



### LAN Interface

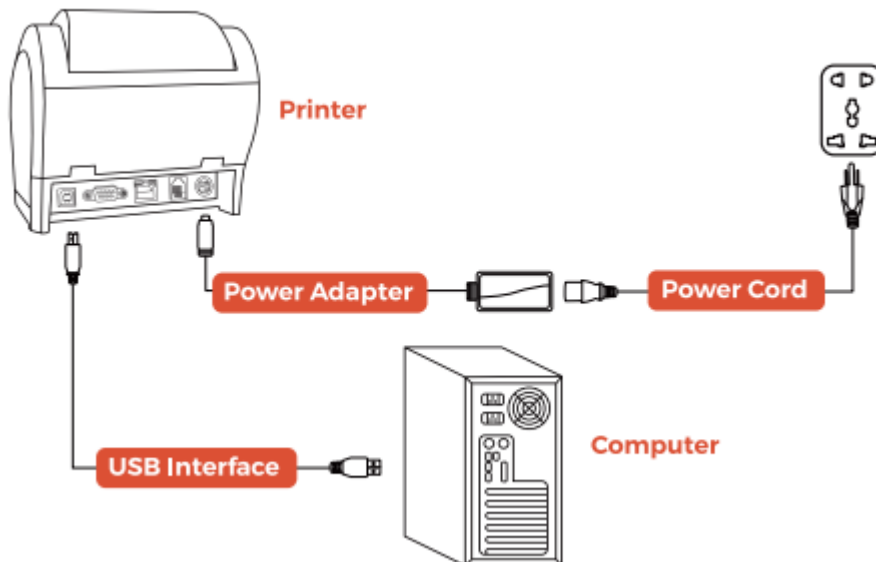
Connect your computer to the wireless router. Please see the picture below.



## Set Up the ITPP068 for First Use on Linux

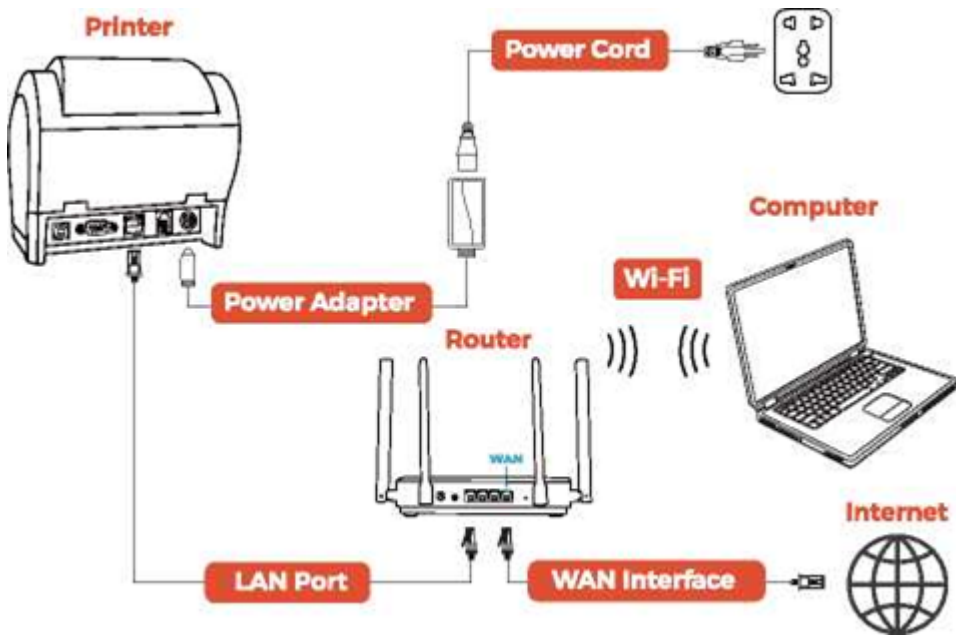
### USB Interface

- 1) Connect the printer to the power outlet via the power cord.
- 2) Connect the printer to your Windows computer via USB.
- 3) Place the thermal paper into the printer and power it on.
- 4) Open the downloaded driver and install it according to the video.



### LAN Interface

Connect your computer to the wireless router. Please see the picture below.



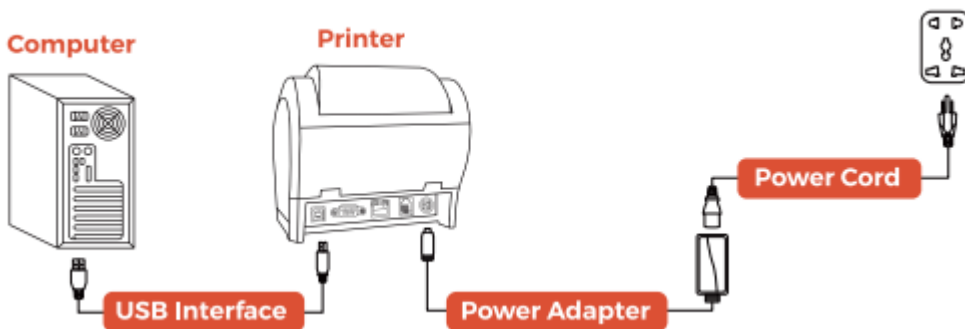
## Set Up The ITPP068 for First Use Tablet or Phone

### LAN Printer Installation

1) Need to change the printer IP to match your network by 'Setting Tool': <http://Ai.pc.cd/eXe> For example, if your local network IP address is 172.18.188.245, then you need to modify the printer's IP address to 172.18.188.100, the first three positions' digits must be the same, and the last positions' digits can be 3~253, but not the same as the local network IP address.

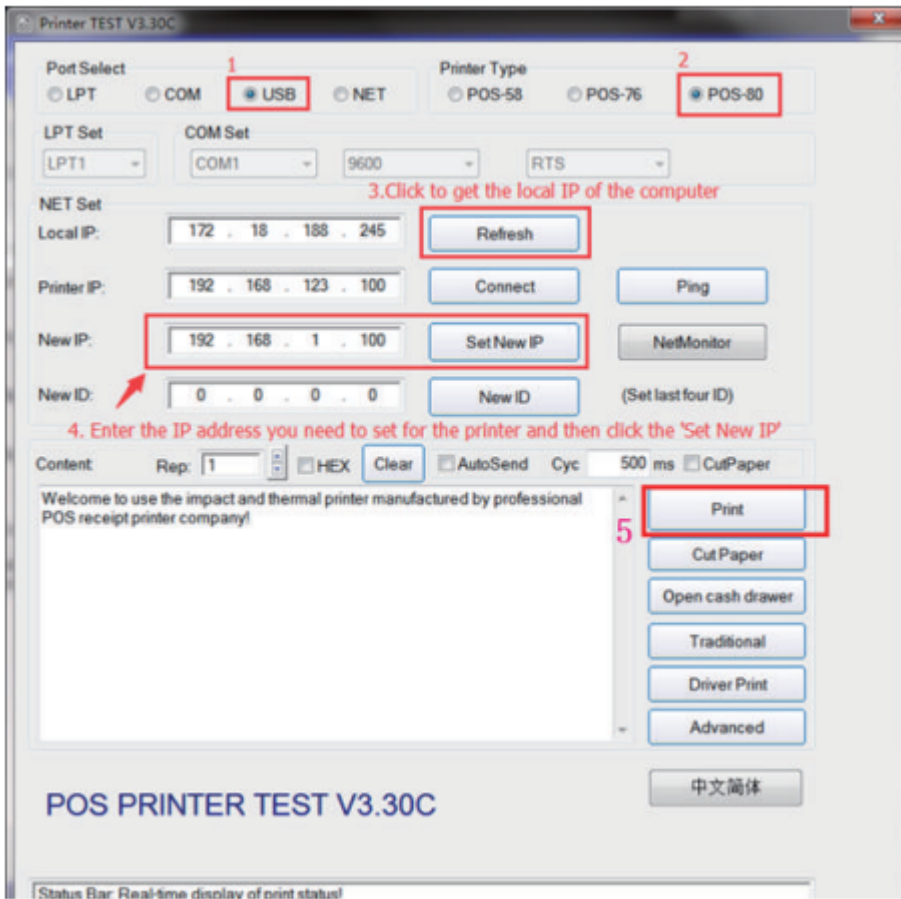
#### Specific steps are as follows:

a. You need to connect the printer with a Windows computer (We currently only have a Windows version for the setting tool) by USB.

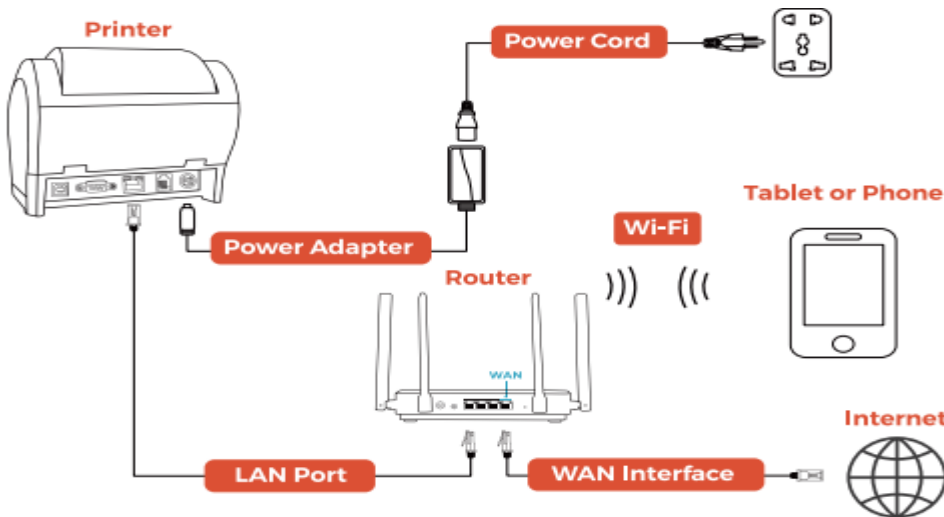


b. Power on the printer and load up the thermal paper.

c. Then, open the "PrinterTEST" to start the IP setting, following the instruction below.



2) Prepare a router and a network cable, and connect the printer to the router.



3) Use the IP address to connect the printer in the POS App. Take Loyverse App as an example.

## FCC Statement

Changes or modifications not expressly approved by the party responsible for compliance could void the user's authority to operate the equipment.

This equipment has been tested and found to comply with the limits for a Class B digital device, pursuant to Part 15 of the FCC Rules. These limits are designed to provide reasonable protection against harmful interference in a residential installation. This equipment generates uses and can radiate radio frequency energy and, if not installed and used in accordance with the instructions, may cause harmful interference to radio communications. However, there is no guarantee that interference will not occur in a particular installation. If this equipment does cause harmful interference to radio or television reception, which can be determined by turning the equipment off and on, the user is encouraged to try to correct the interference by one or more of the following measures:

- Reorient or relocate the receiving antenna.
- Increase the separation between the equipment and receiver.
- Connect the equipment into an outlet on a circuit different from that to which the receiver is connected.
- Consult the dealer or an experienced radio/TV technician for help.

This device complies with part 15 of the FCC rules. Operation is subject to the following two conditions (1) this device may not cause harmful interference, and (2) this device must accept any interference received, including interference that may cause undesired operation.

This equipment complies with FCC radiation exposure limits set forth for an uncontrolled environment.

#### **Warning**

This content is compiled from multiple sources and is provided for reference purposes only. It may not be complete or fully applicable to all situations. If you are unable to resolve your issue, please contact the product manufacturer or an authorized service provider for official support.